

**TRIBUNALE DI NOLA**

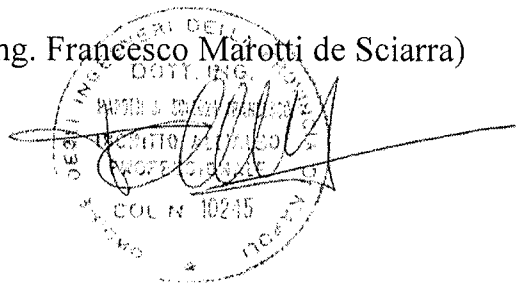
**II Sezione Civile**

**LIQUIDAZIONE GIUDIZIALE R.G. N. 58/2023**



**ALLEGATO FOTOGRAFICO – BENI RINVENUTI**

(prof. ing. Francesco Marotti de Sciarra)



MAGGIO 2024

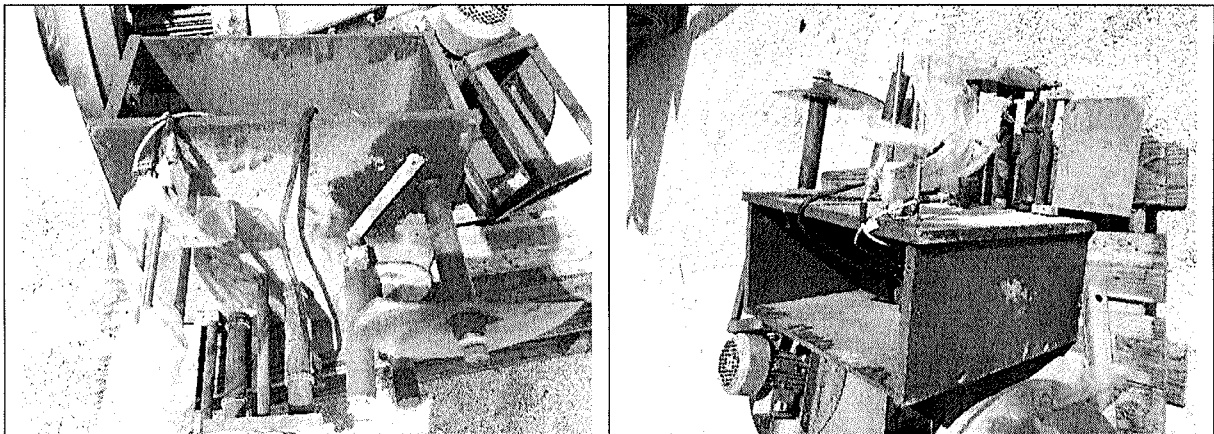


Figura 90 – Porzione di una macchina

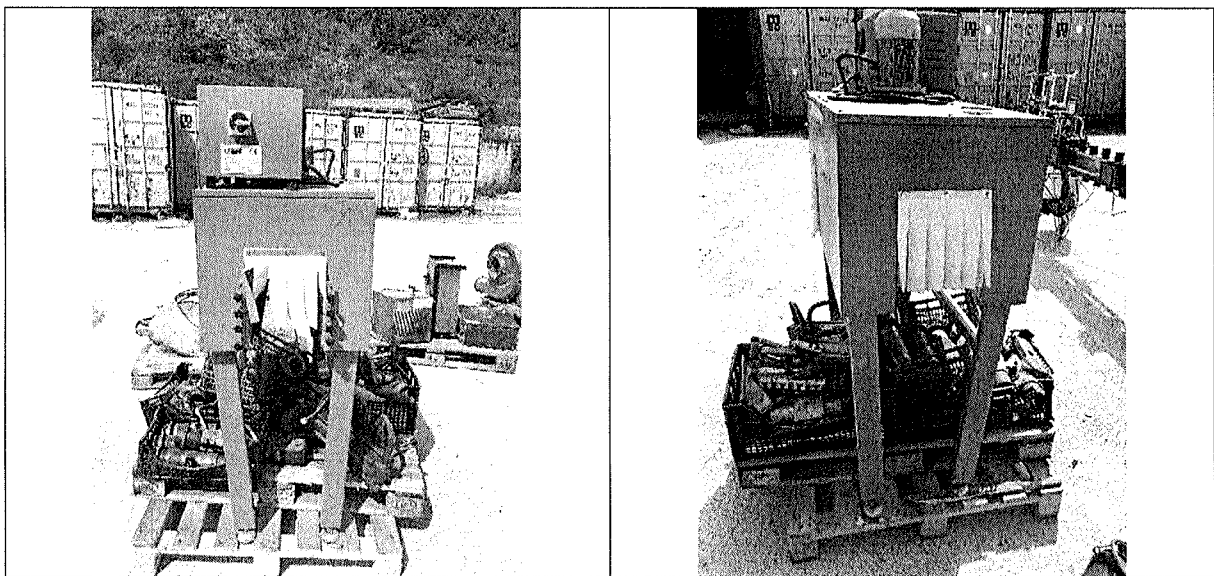


Figura 91 – Macchina  $\alpha$  Pack Europe modello APT-10.12 SLNC

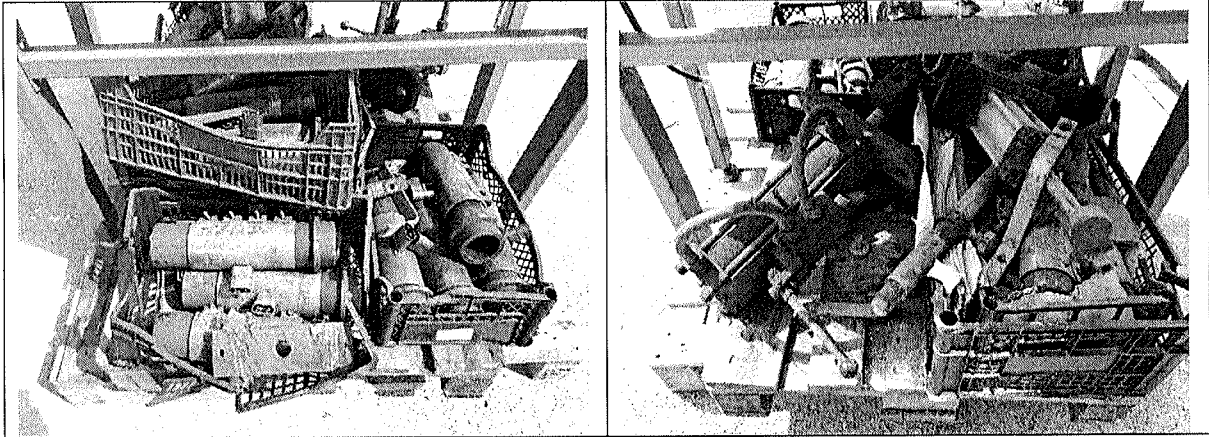


Figura 92 – Pezzi di stampi in ferro

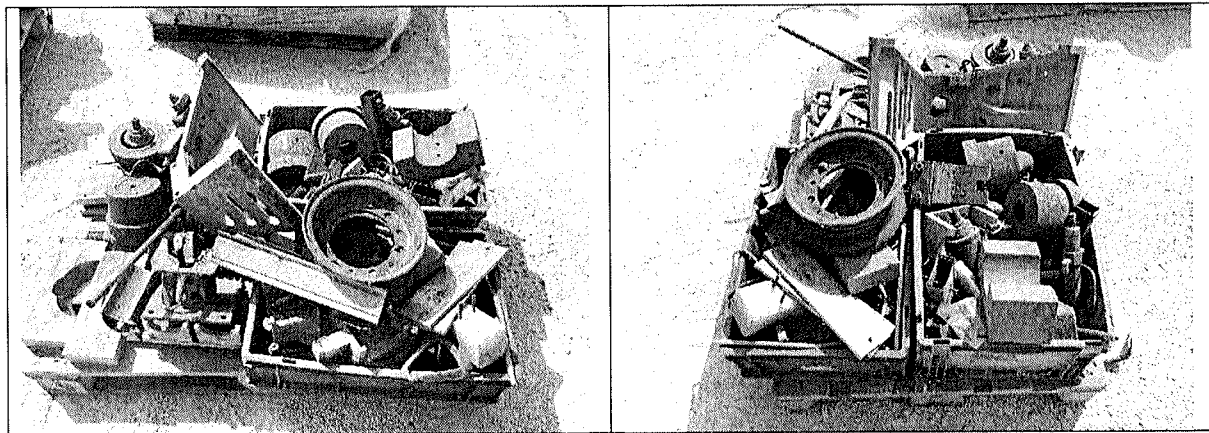


Figura 93 – Pezzi in ferro

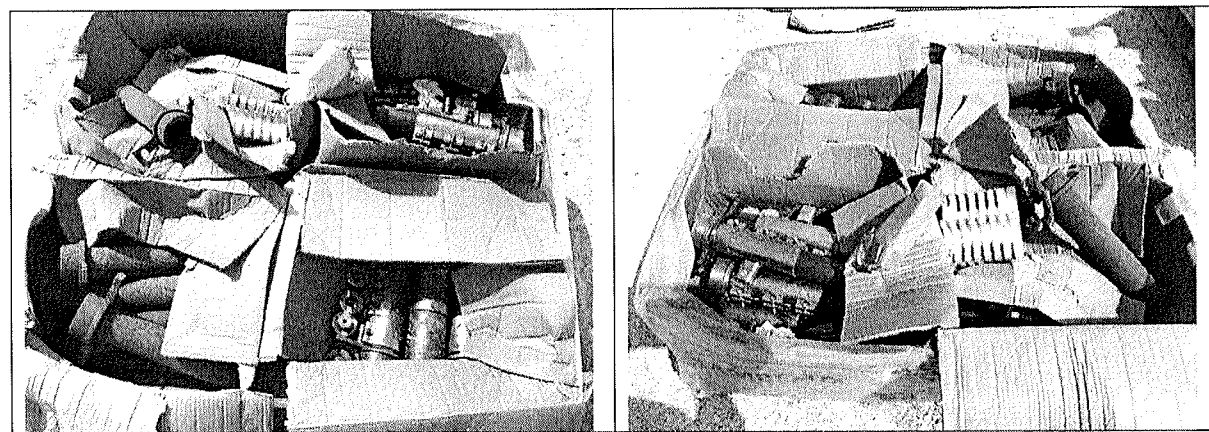


Figura 94 – Pezzi in ferro

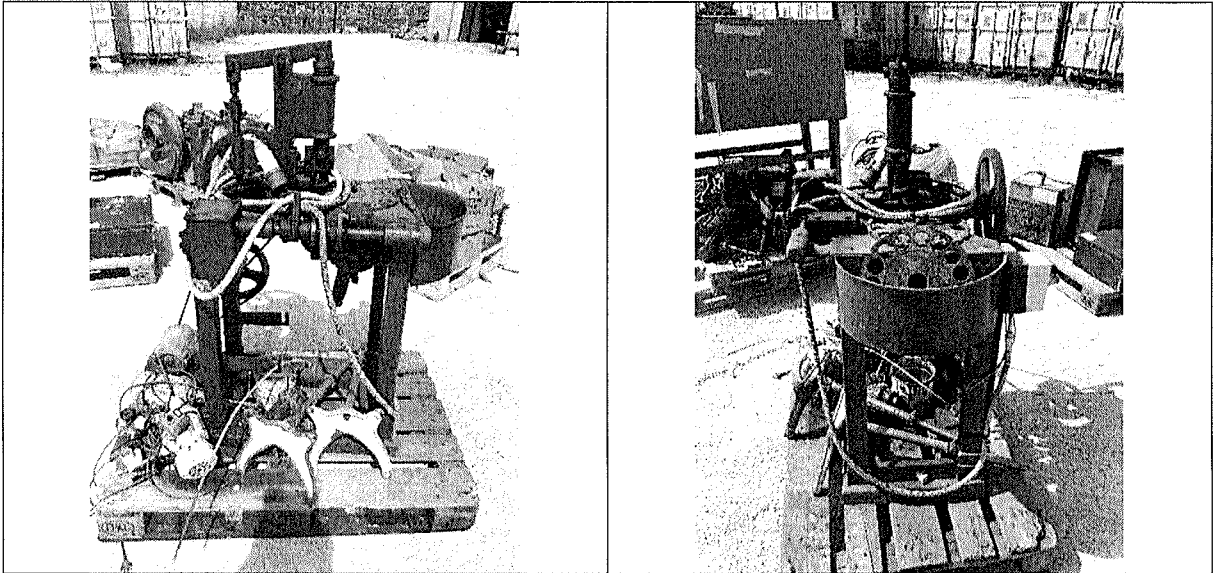


Figura 95 – Macchina in apparente stato di disuso

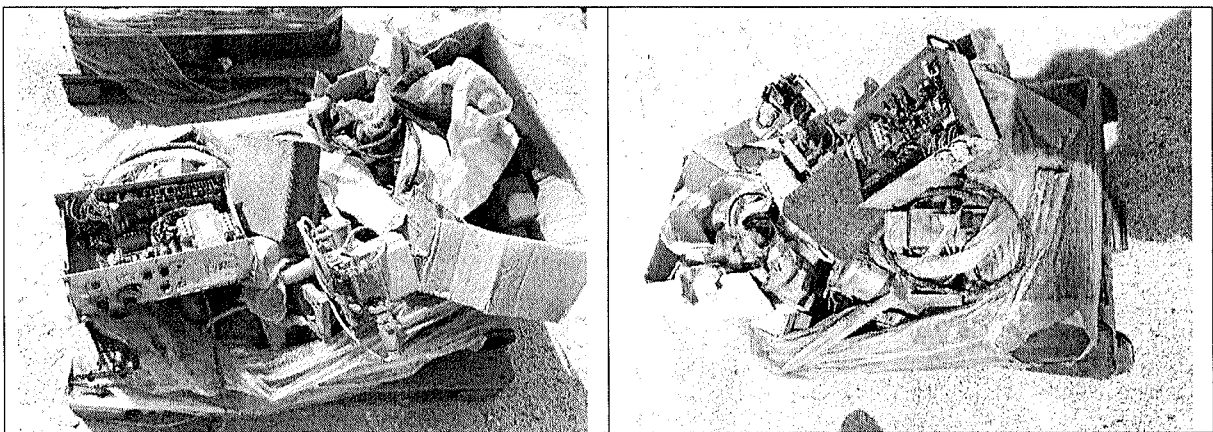


Figura 96 – Pezzi di attrezzature

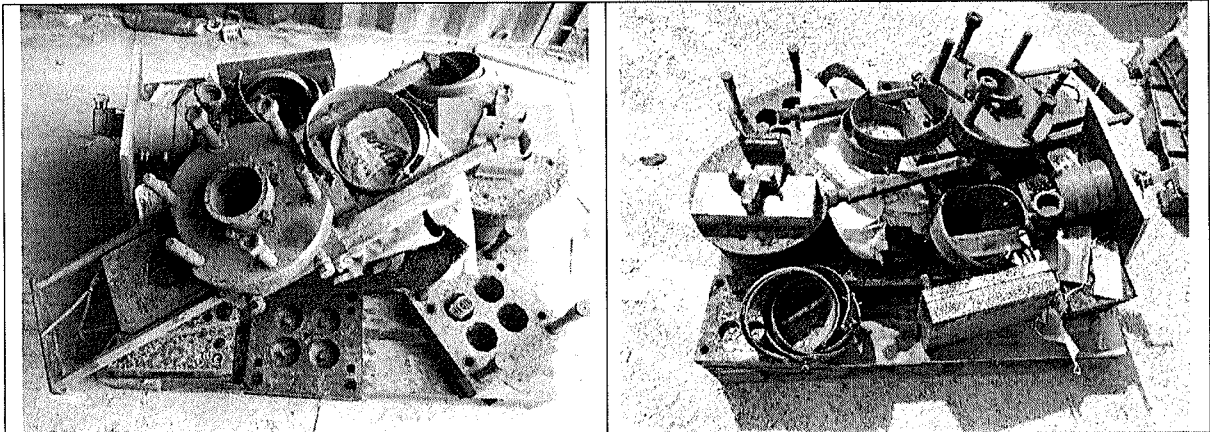


Figura 97 – Pezzi di stampi

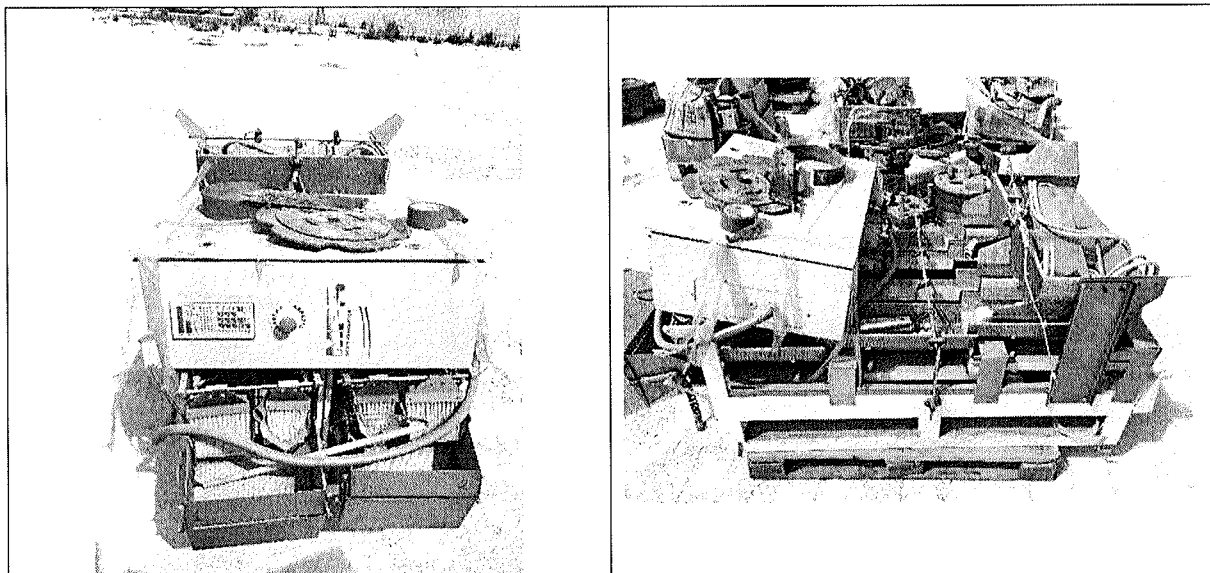


Figura 98 – Macchina MPS Packaging Evolution

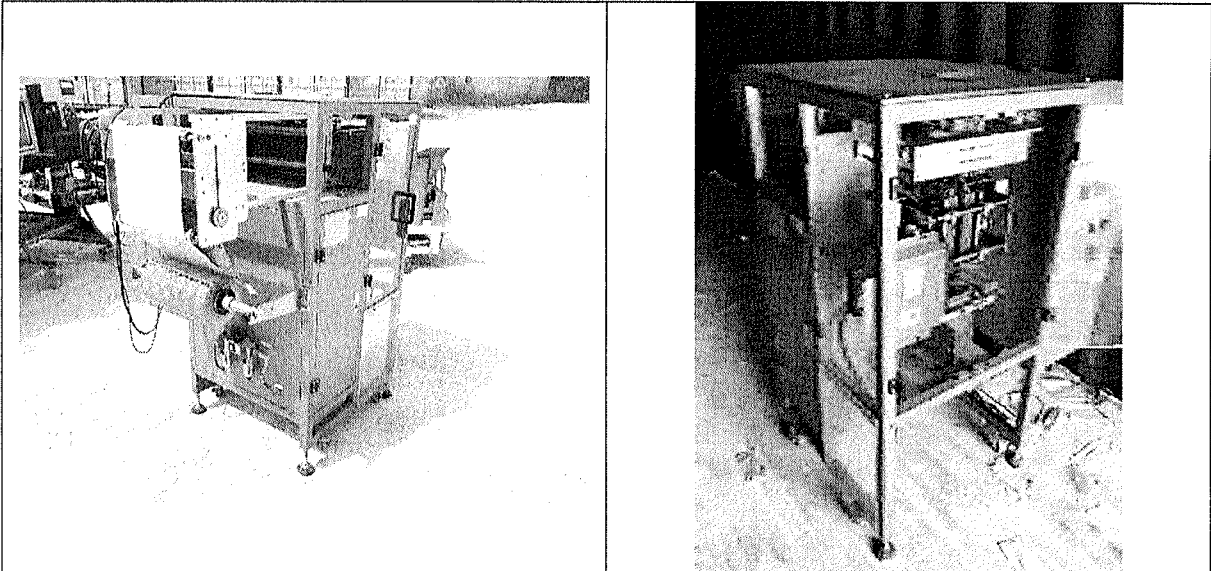


Figura 99 – Etichettatrice

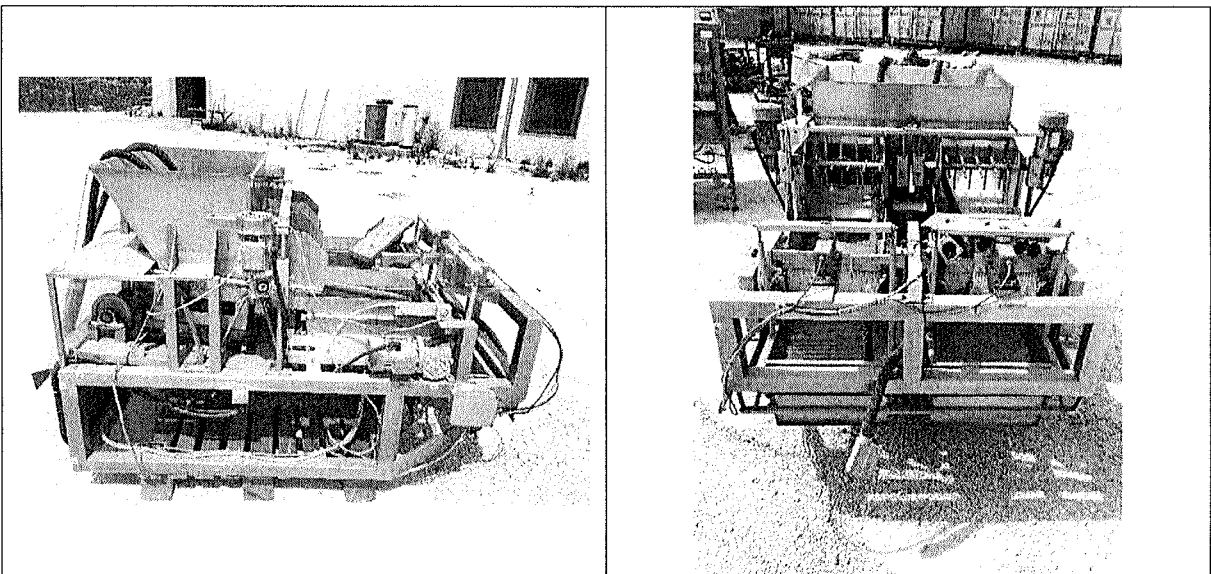


Figura 100 – Macchina

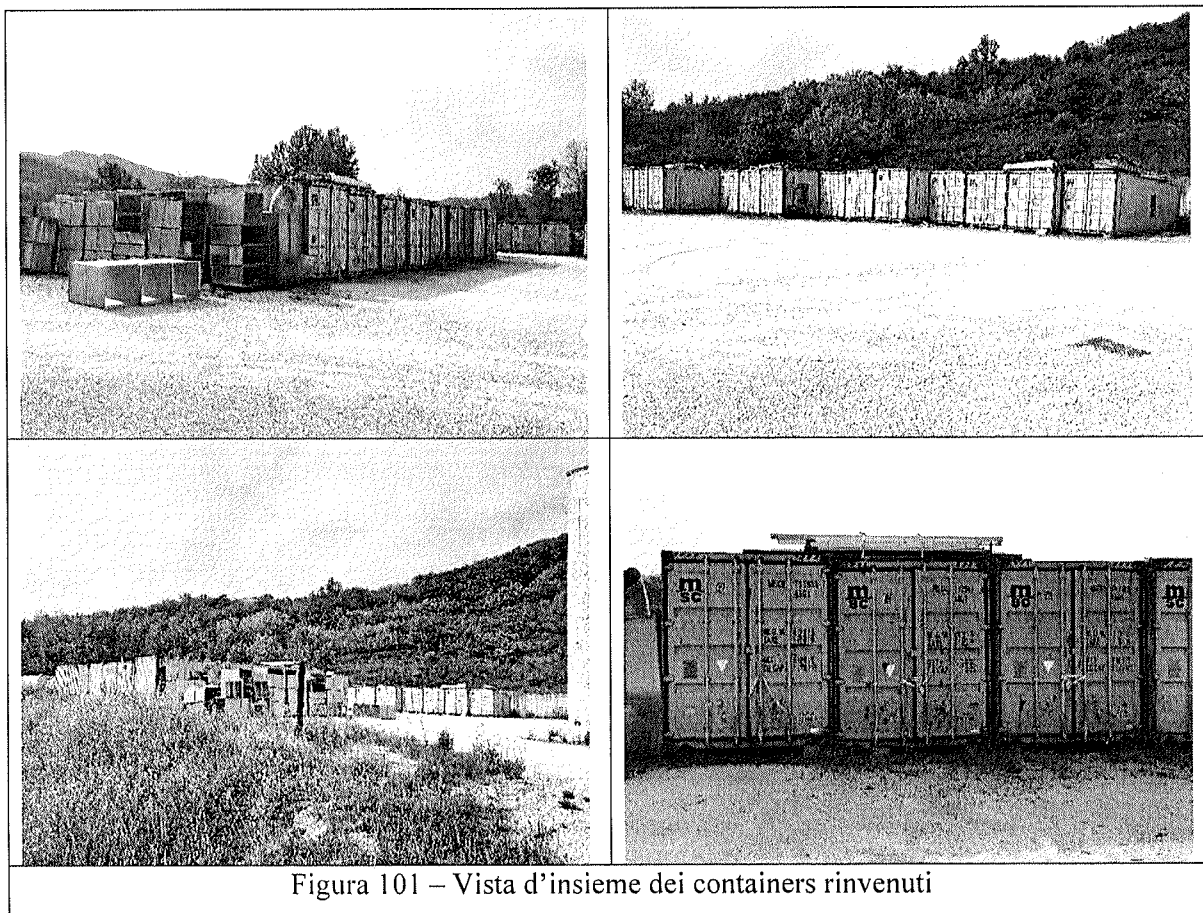


Figura 101 – Vista d'insieme dei containers rinvenuti





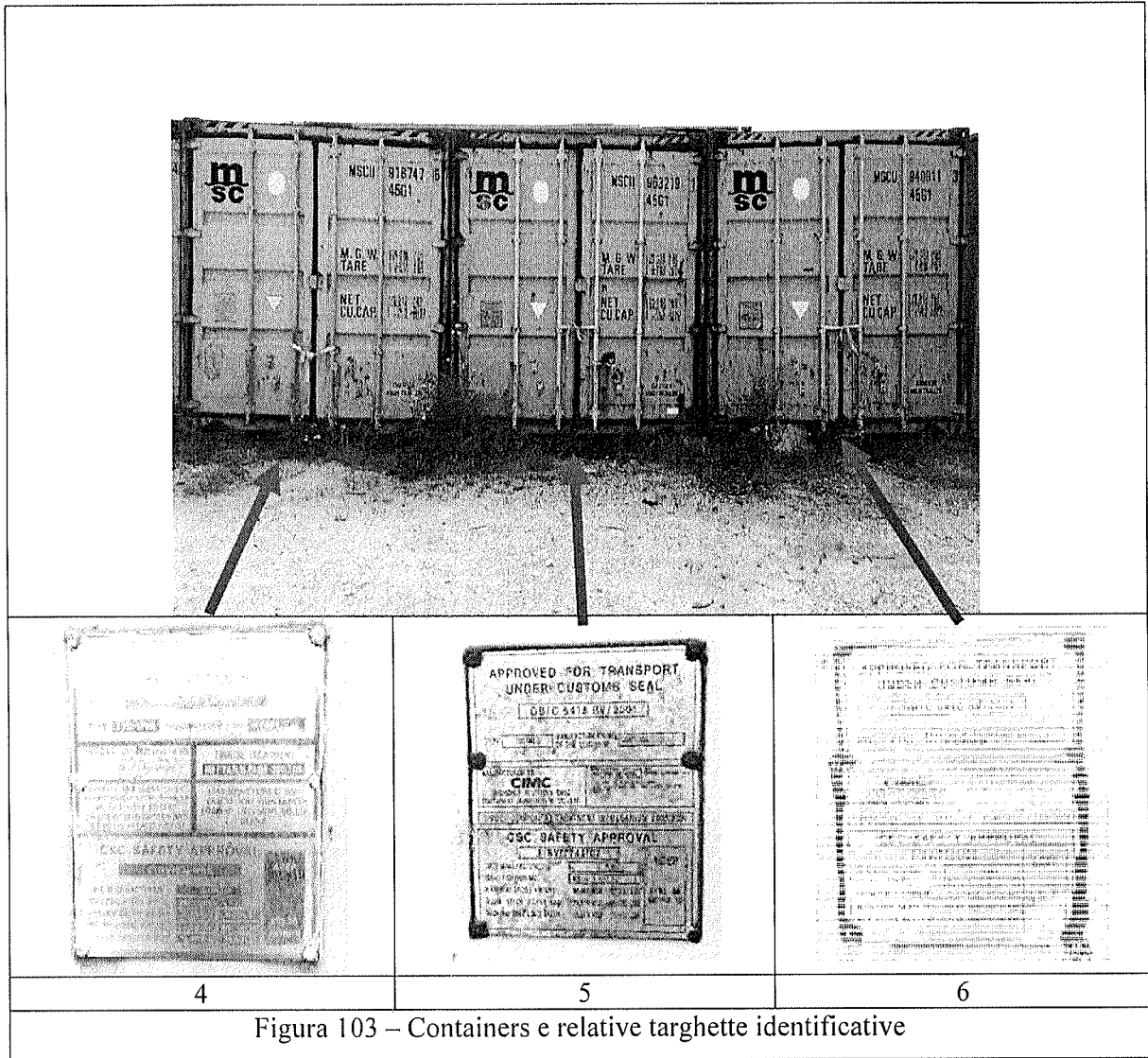


Figura 103 – Containers e relative targhette identificative

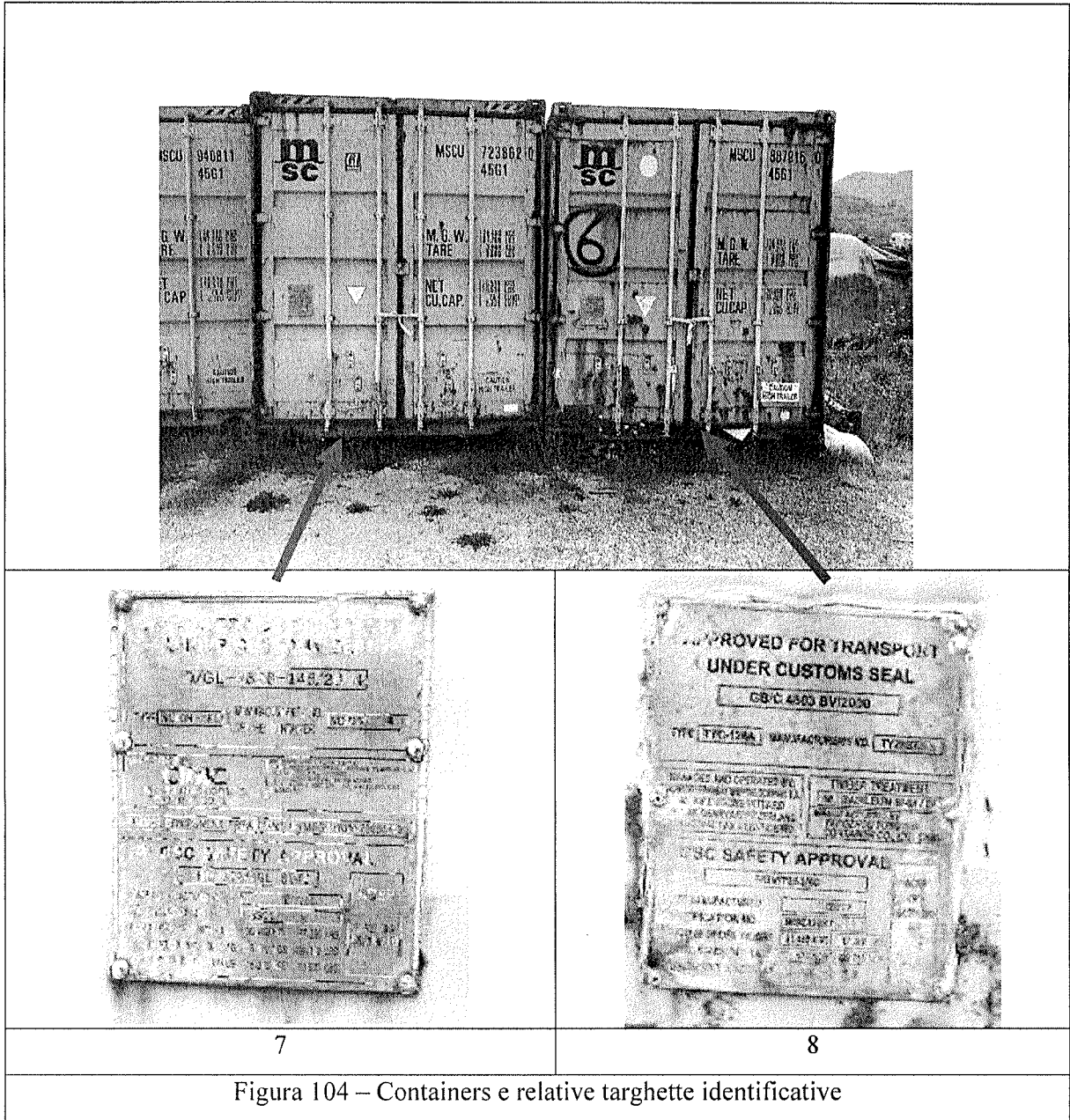


Figura 104 – Containers e relative targhette identificative

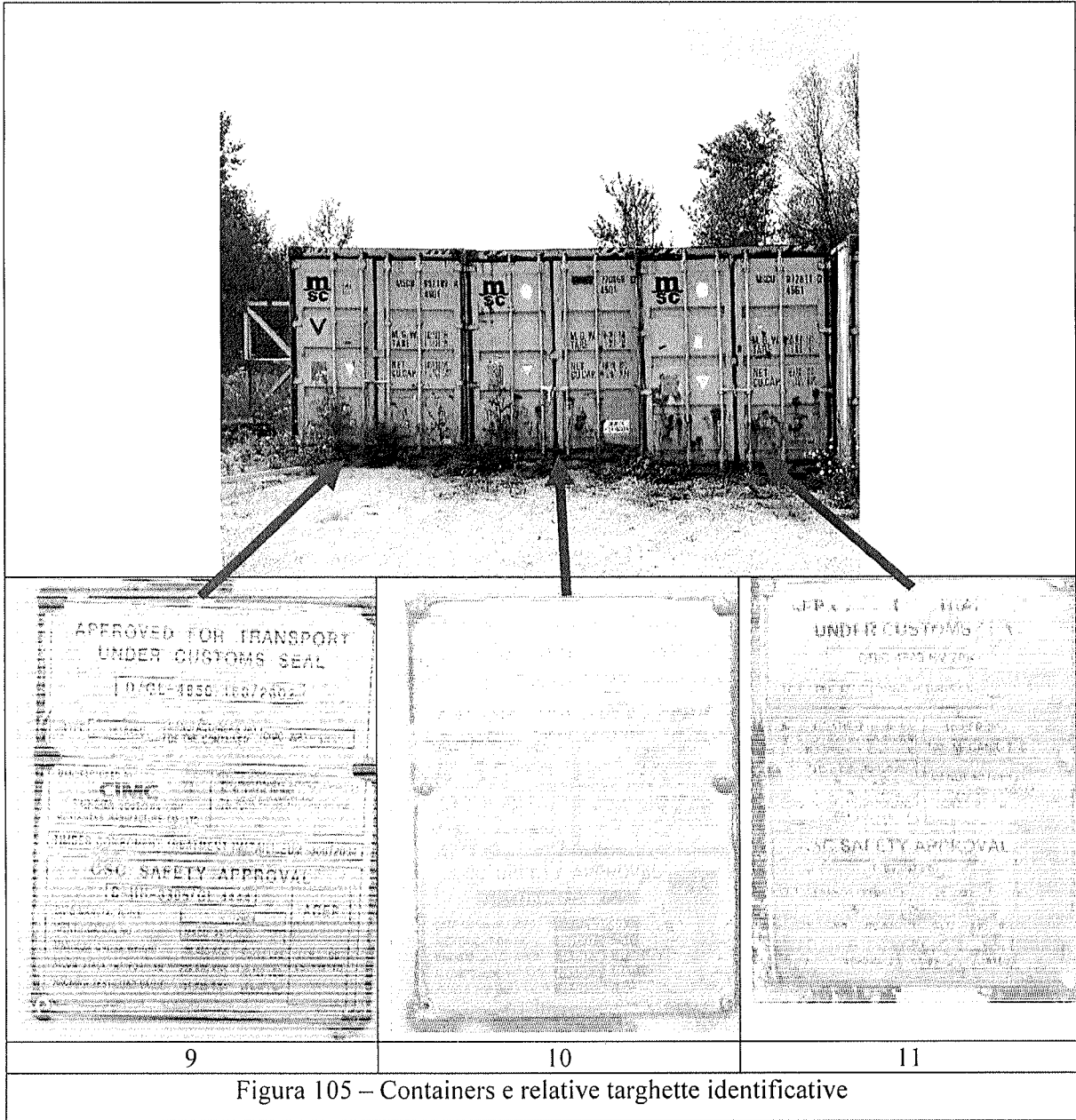


Figura 105 – Containers e relative targhette identificative