

ALL.3



Foto 2 – Via Padova 51



Foto 3 e 4 – cortile e accesso alla scala comune

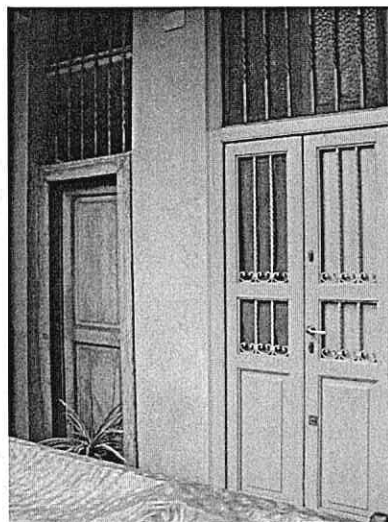


Foto 5 e 6 – ballatoio e ingresso all'appartamento e al bagno comune

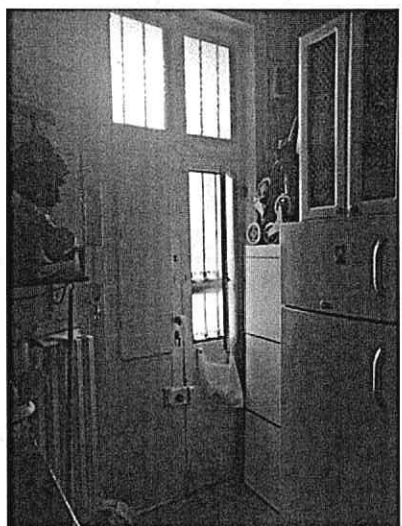


Foto 7 e 8 – atrio di ingresso trasformato in cucina



Foto 9 e 10 – Cucina e cucina vista dal soggiorno

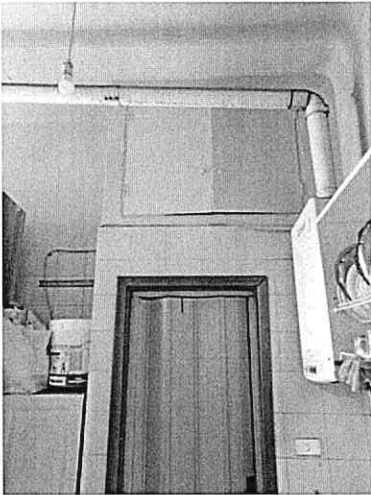


Foto 11 e 12 – porta di ingresso al bagno e bagno



Foto 13 e 14 – soggiorno

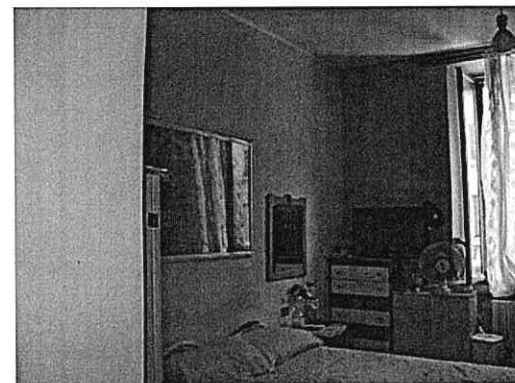


Foto 15 e 16 – Camera

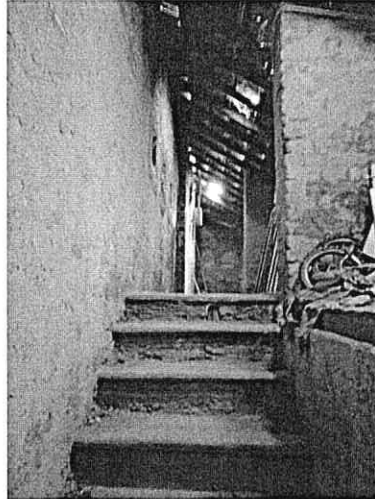
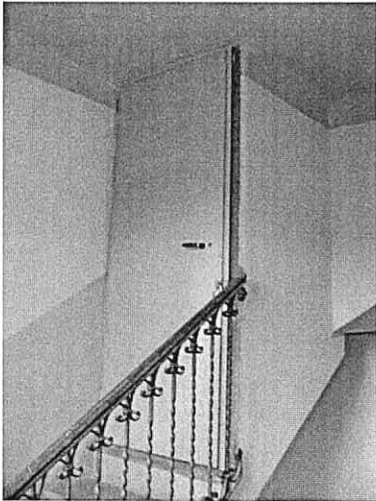


Foto 17 - 18 - Ingresso al sottotetto

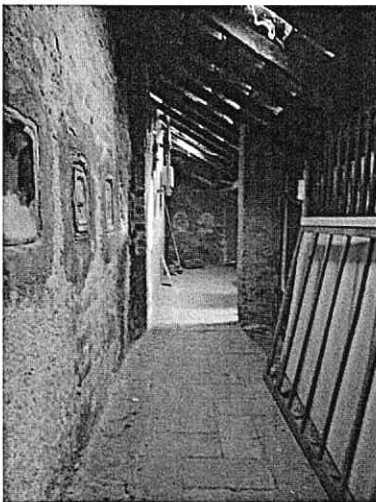


Foto 19- Corridoio comune

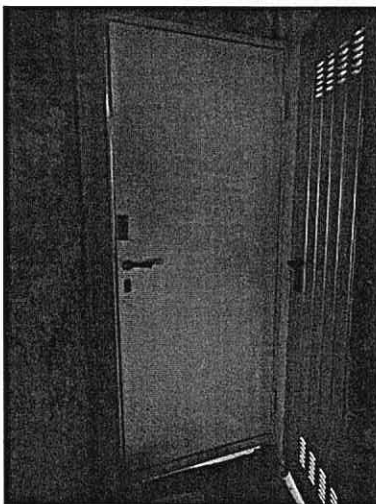


Foto 20 - 21 - Porta di accesso e interno spazio solaio