

DOCUMENTAZIONE FOTOGRAFICA

*Via Gonin, 65*

*MILANO*



Vista del complesso condominiale da via Gonin e particolare dell'ingresso.





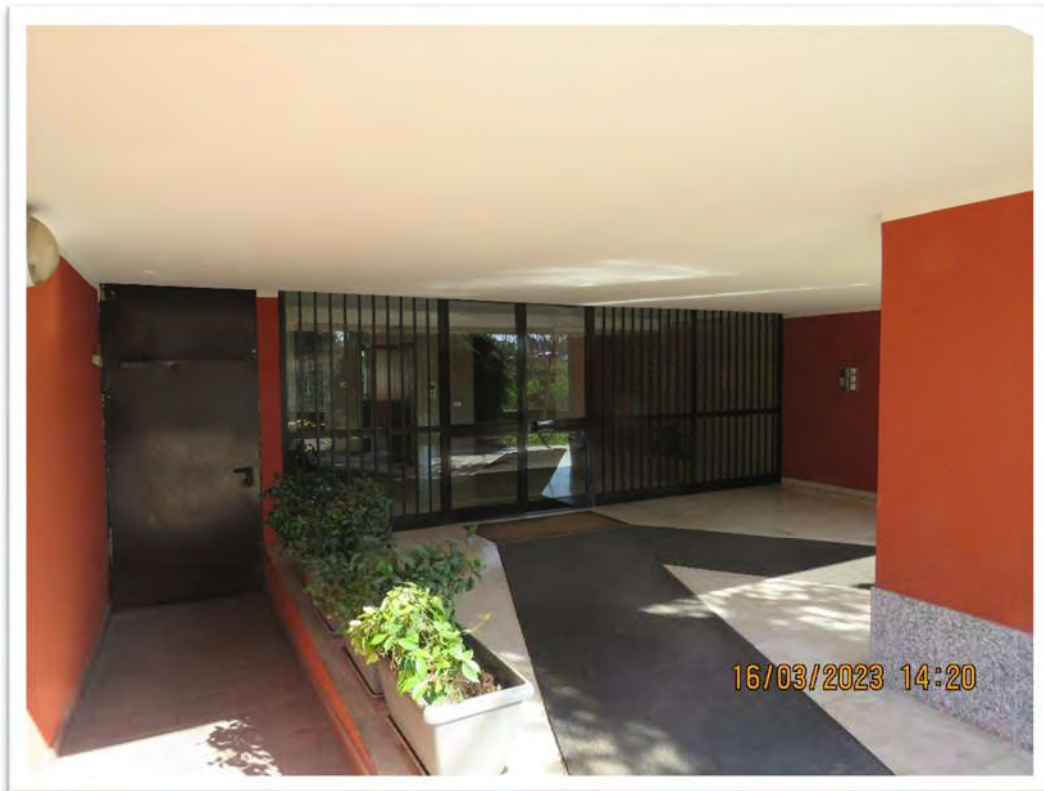
L'intorno.





Il fabbricato e l'ingresso al vano scala F.



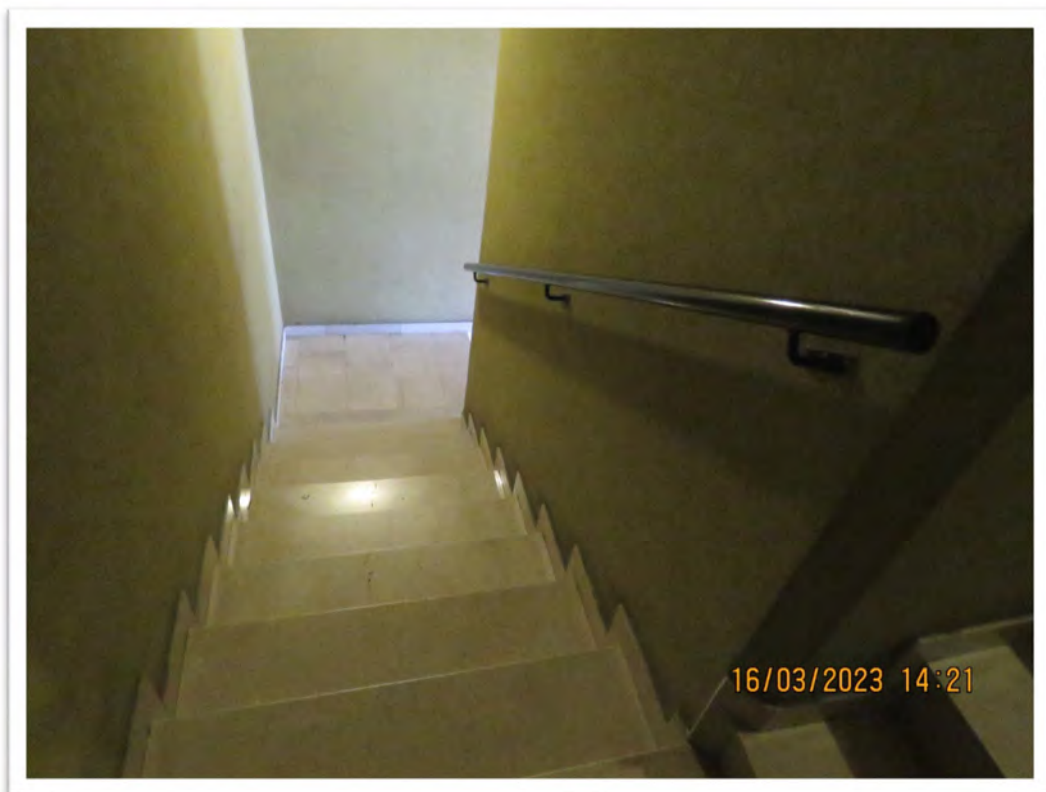


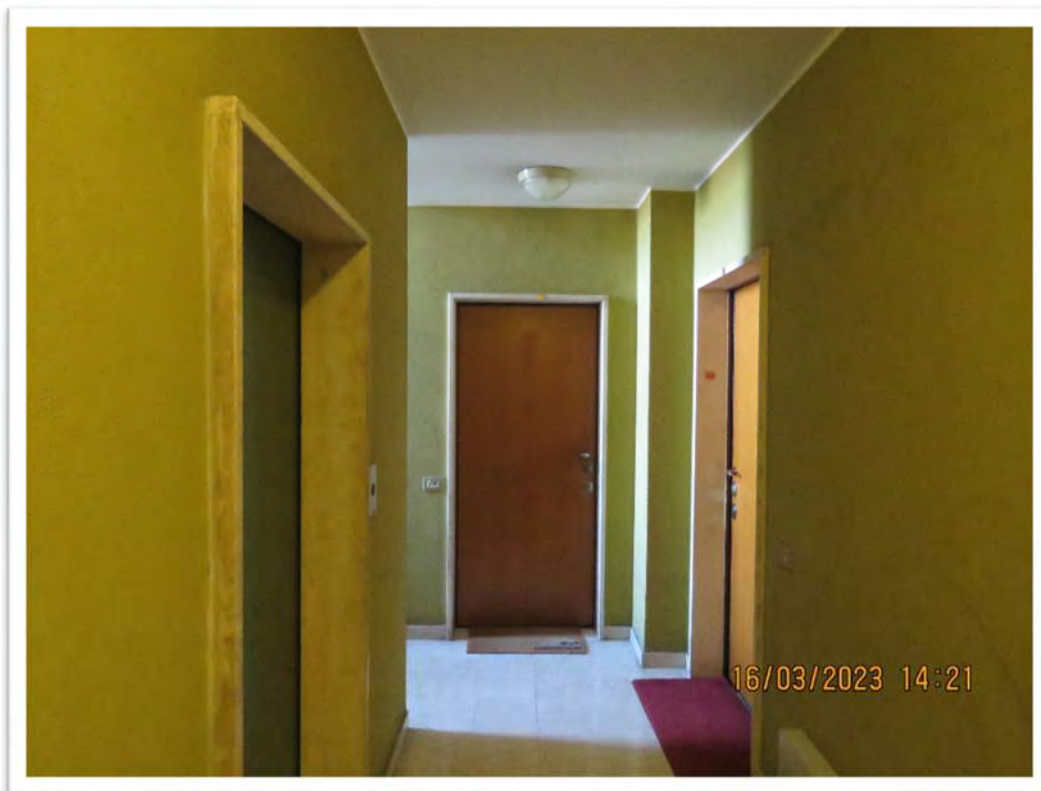
Particolare dell'ingresso condominiale posto al piano seminterrato.





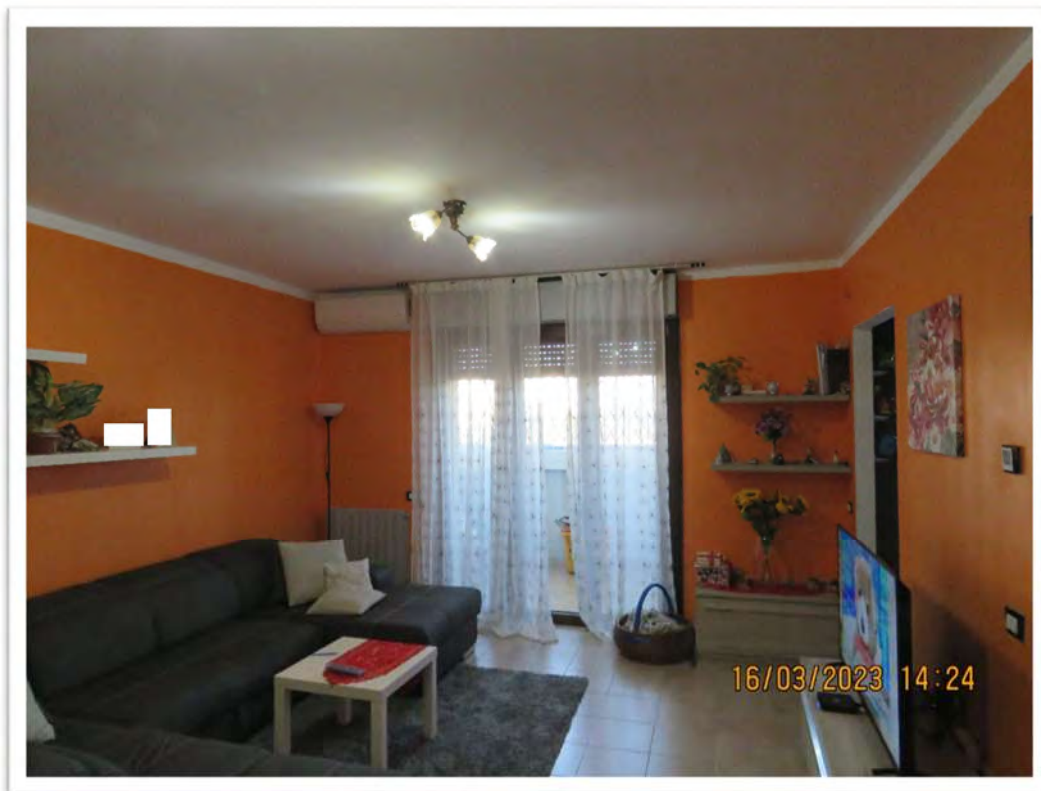
Particolare dell'ingresso condominiale posto al piano seminterrato e del vano scale.



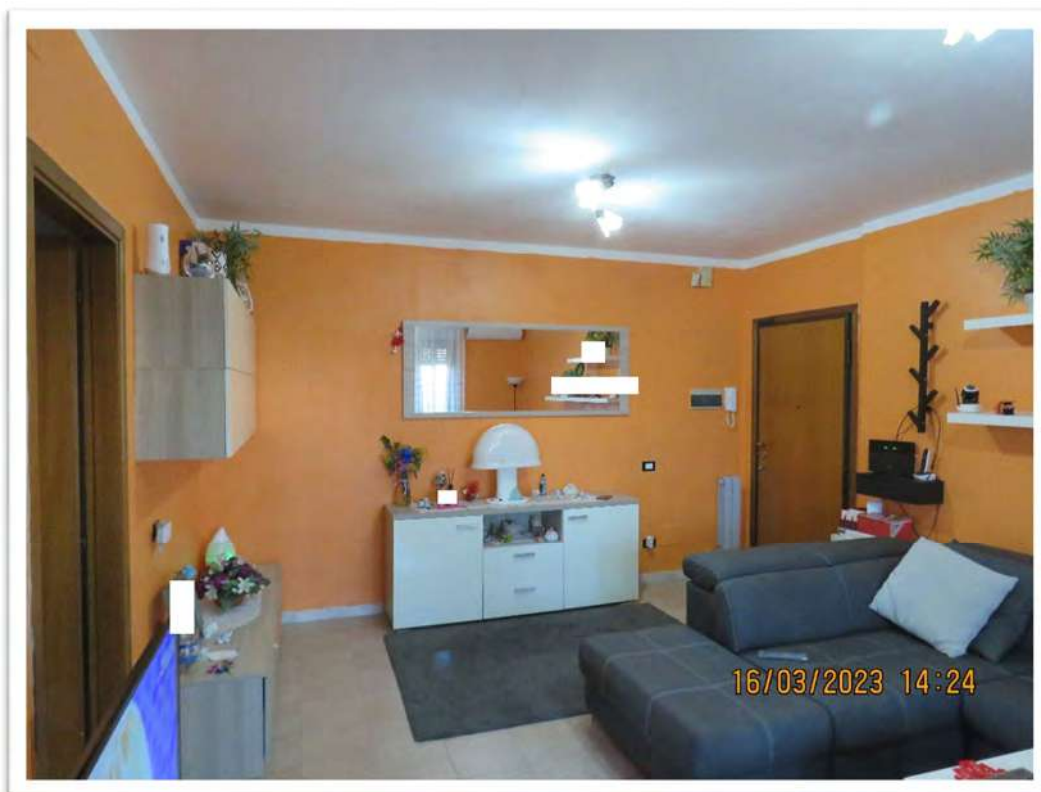


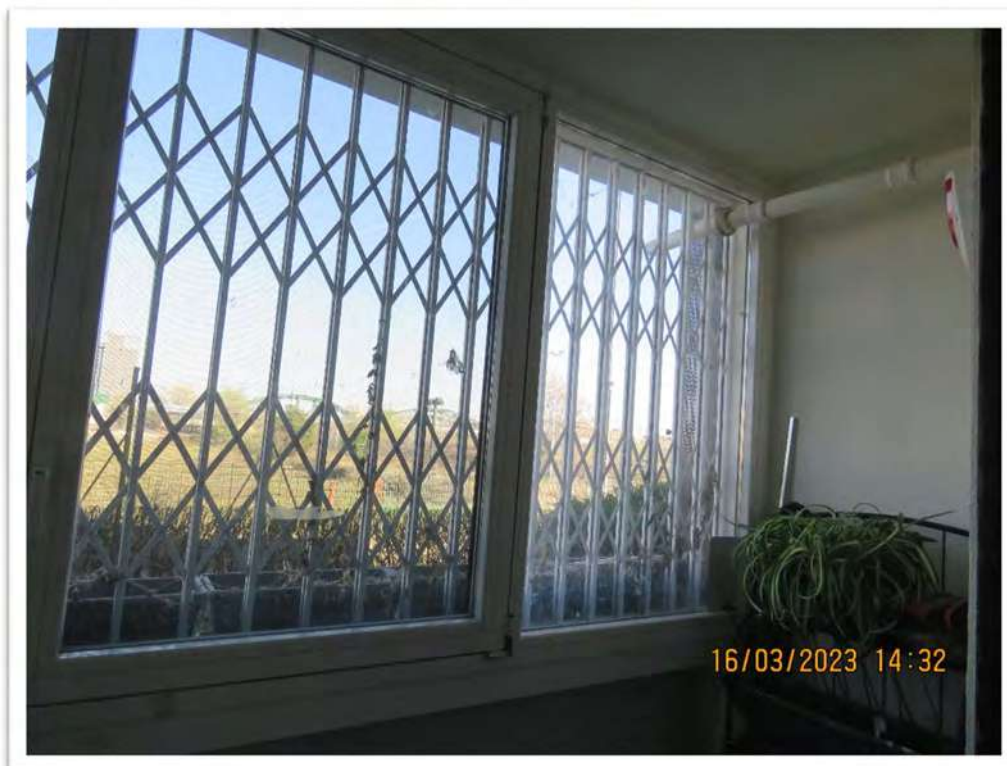
Il pianerottolo del piano rialzato e particolare dell'ingresso all'alloggio.





Il soggiorno/ingresso/pranzo.

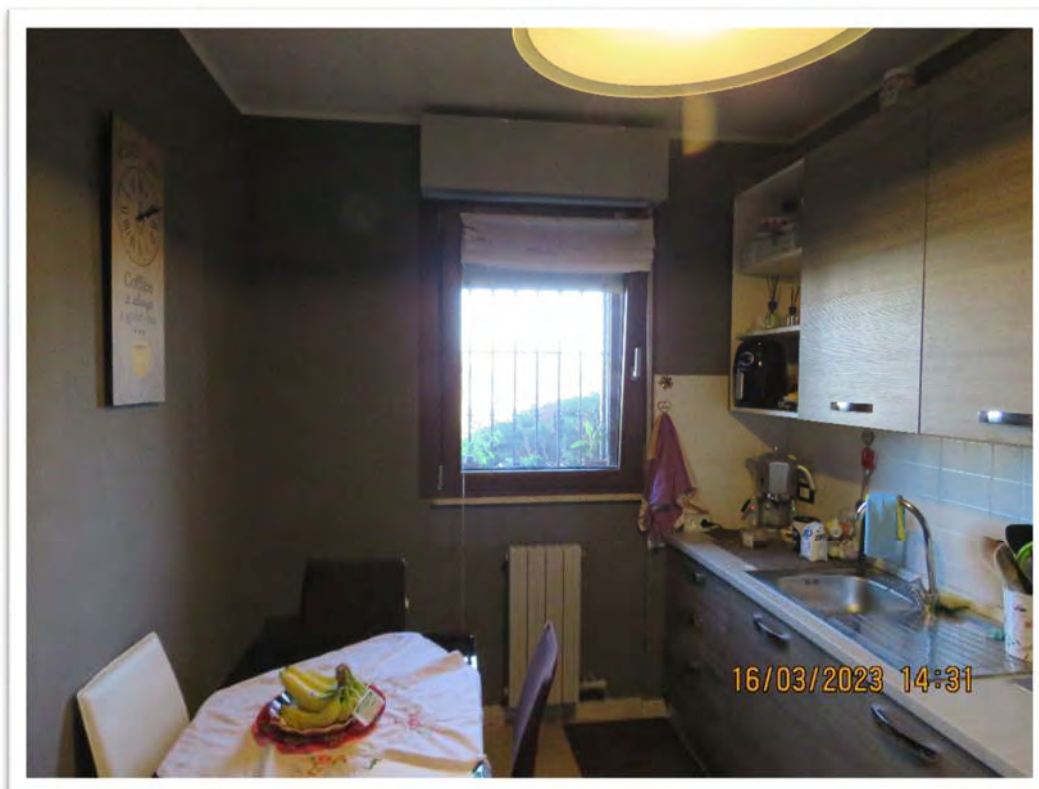




Viste del terrazzo chiuso apparentemente senza titolo.

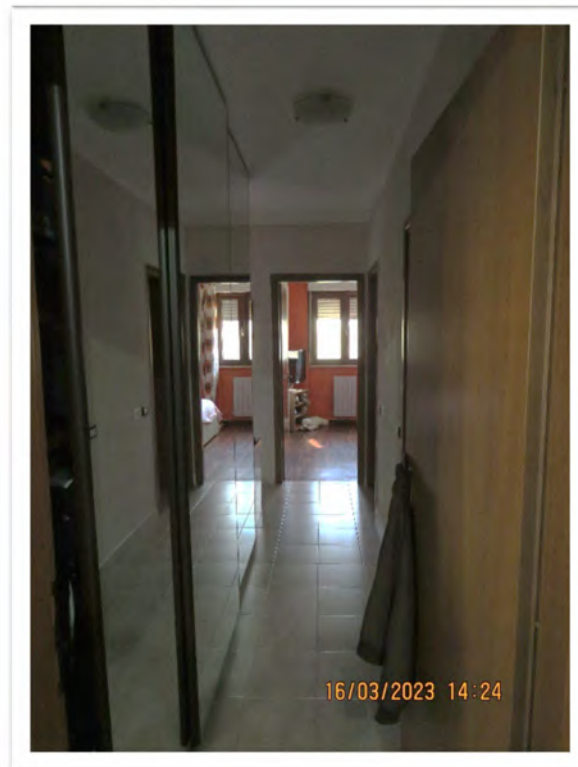






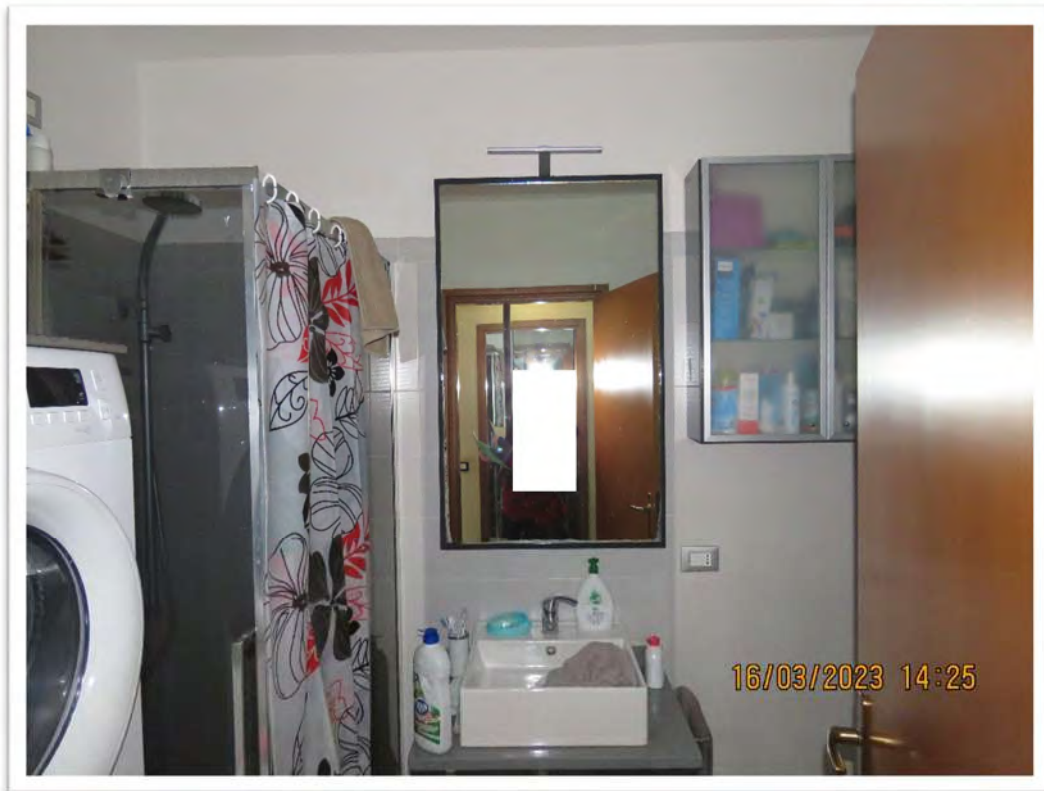
La cucina.





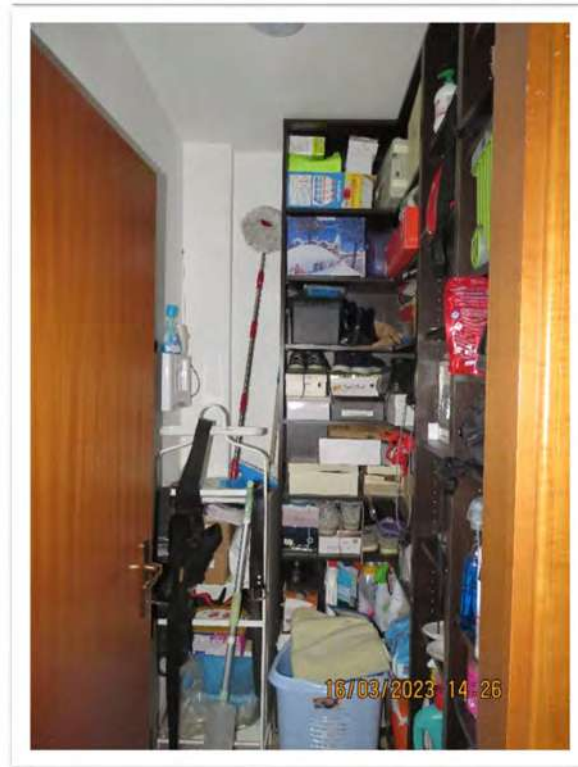
Il disimpegno della zona notte.





Il bagno di servizio/lavanderia.



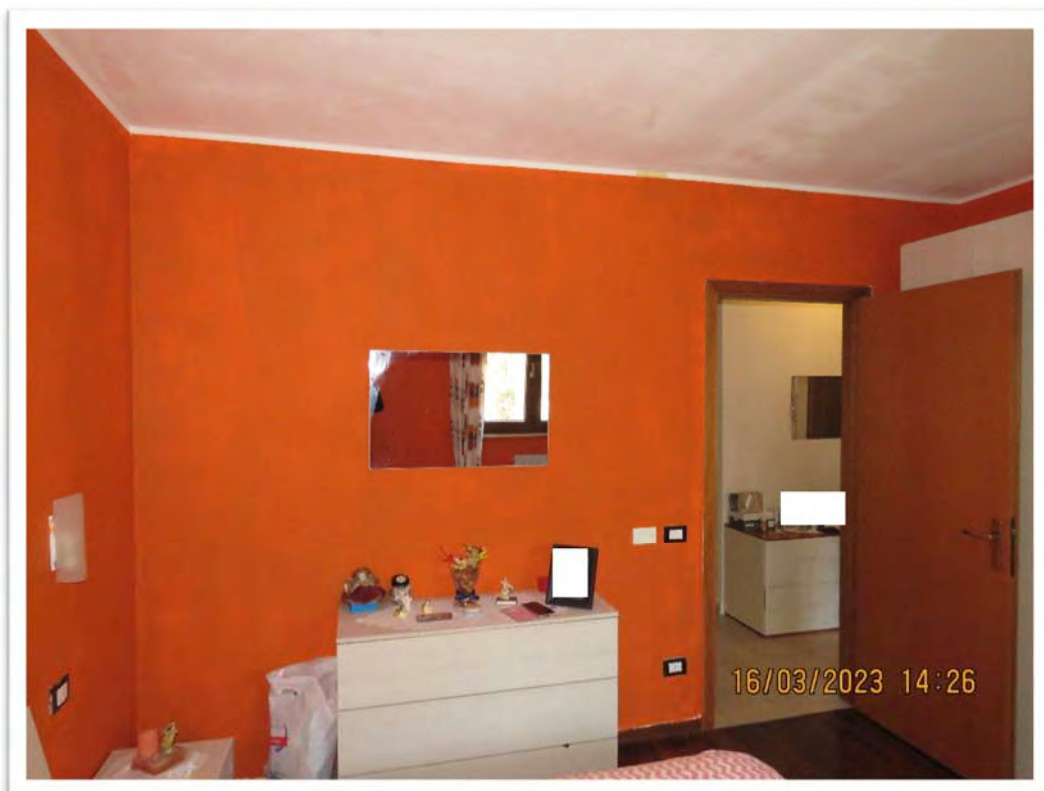


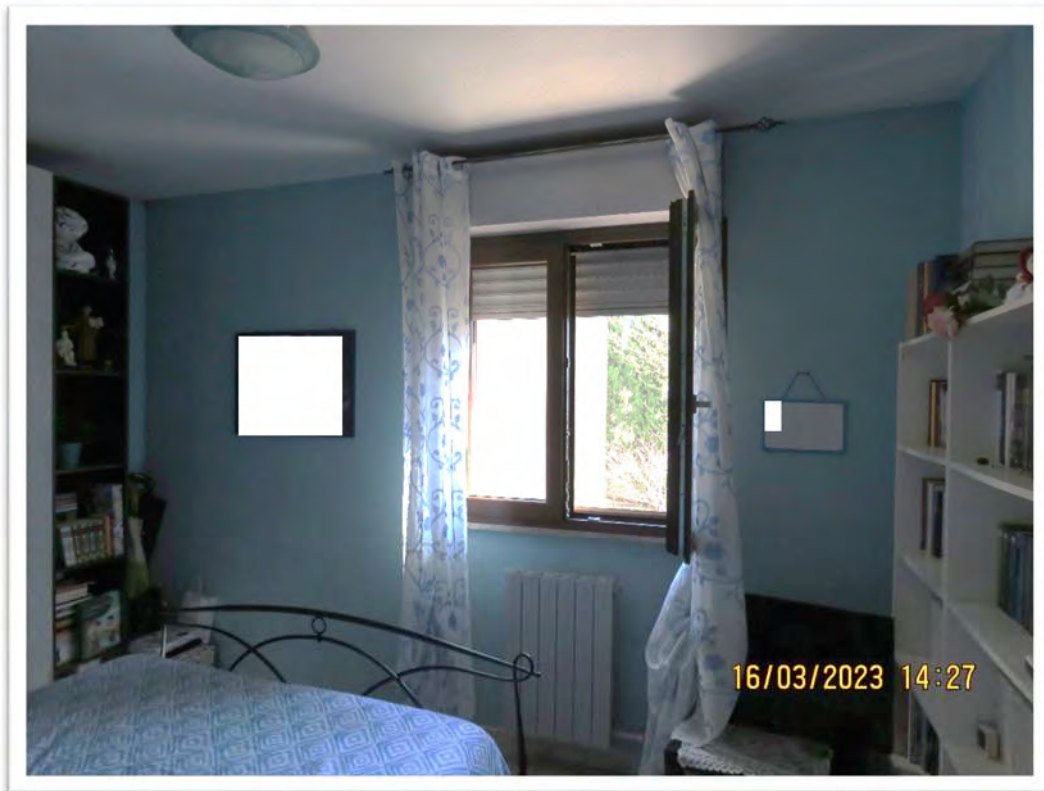
Il ripostiglio ed altra porzione del disimpegno.



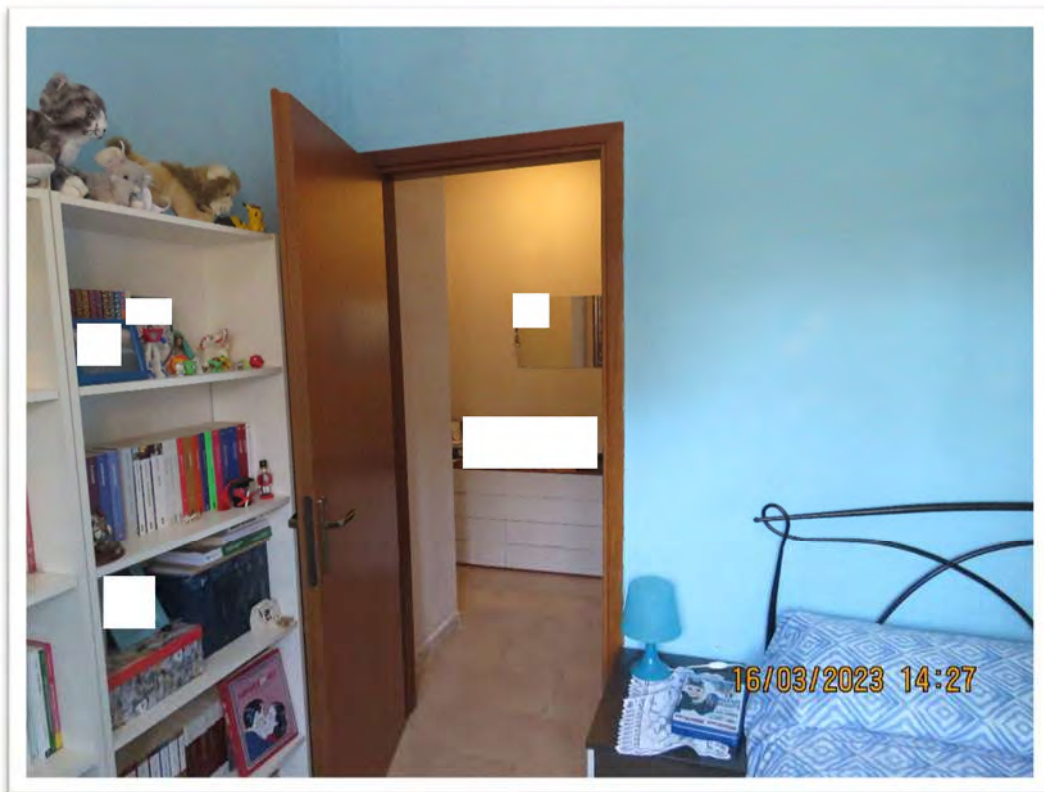


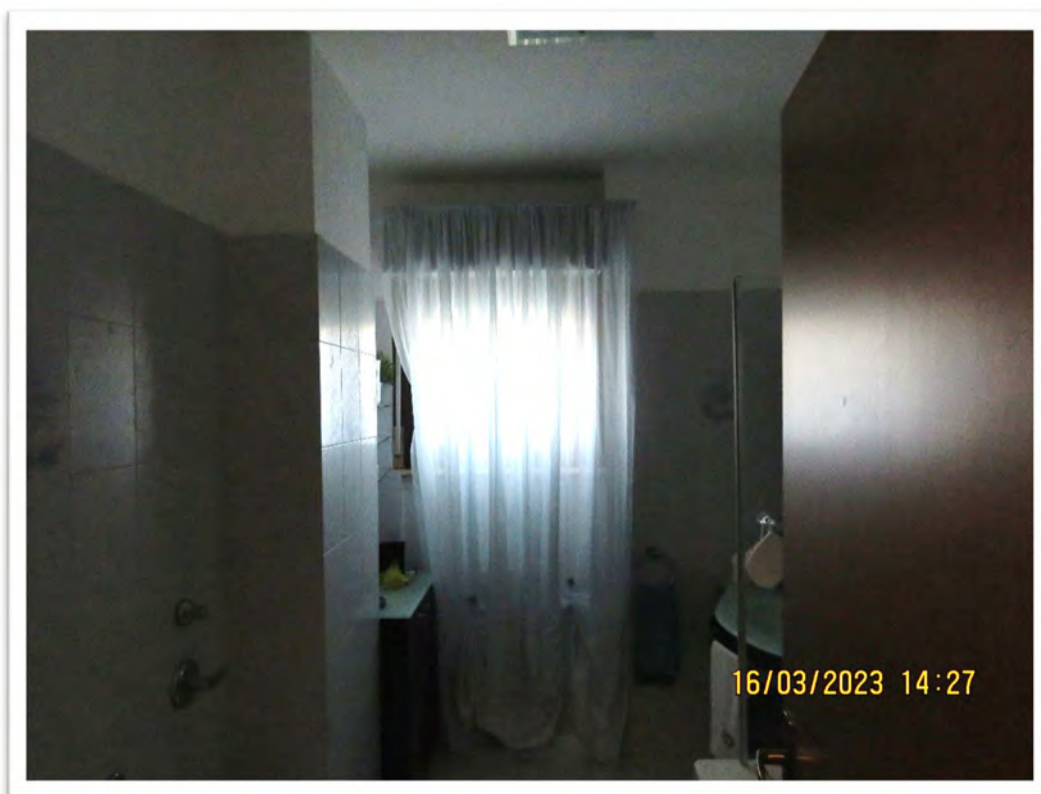
La camera principale.





L'altra camera.



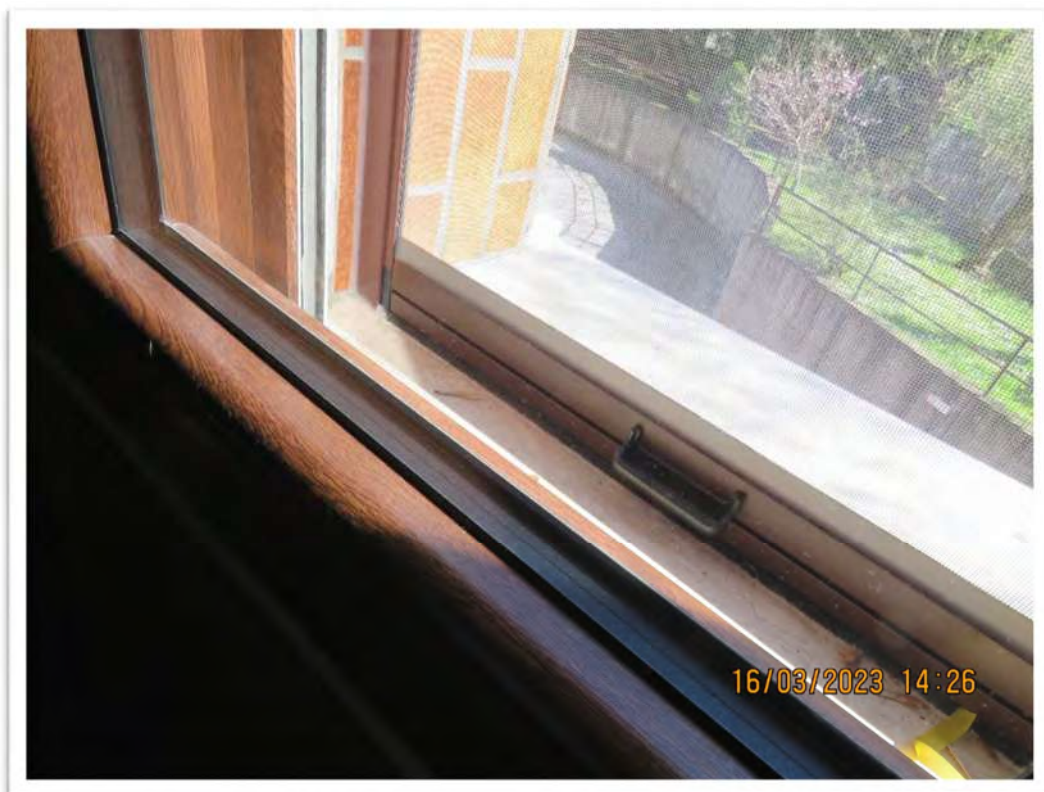


Il bagno principale.





Particolari della caldaia sul terrazzo e delle finestre.







Particolare del termosifone e di traccia di muffe/condensa nella cameretta.





L'autorimessa.

