

Foto 1,2 – POSIZIONE RISPETTO AL COMPRESORIO MILANESE e AEROFOTOGRAMMETRIA INSEDIAMENTO

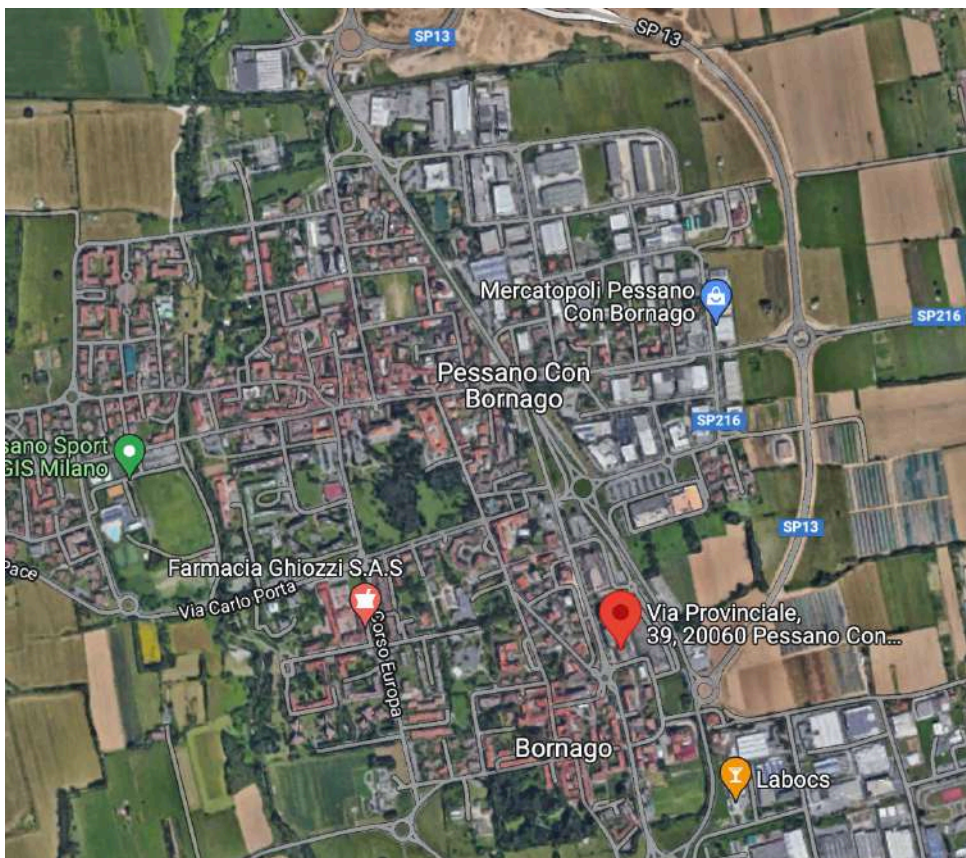
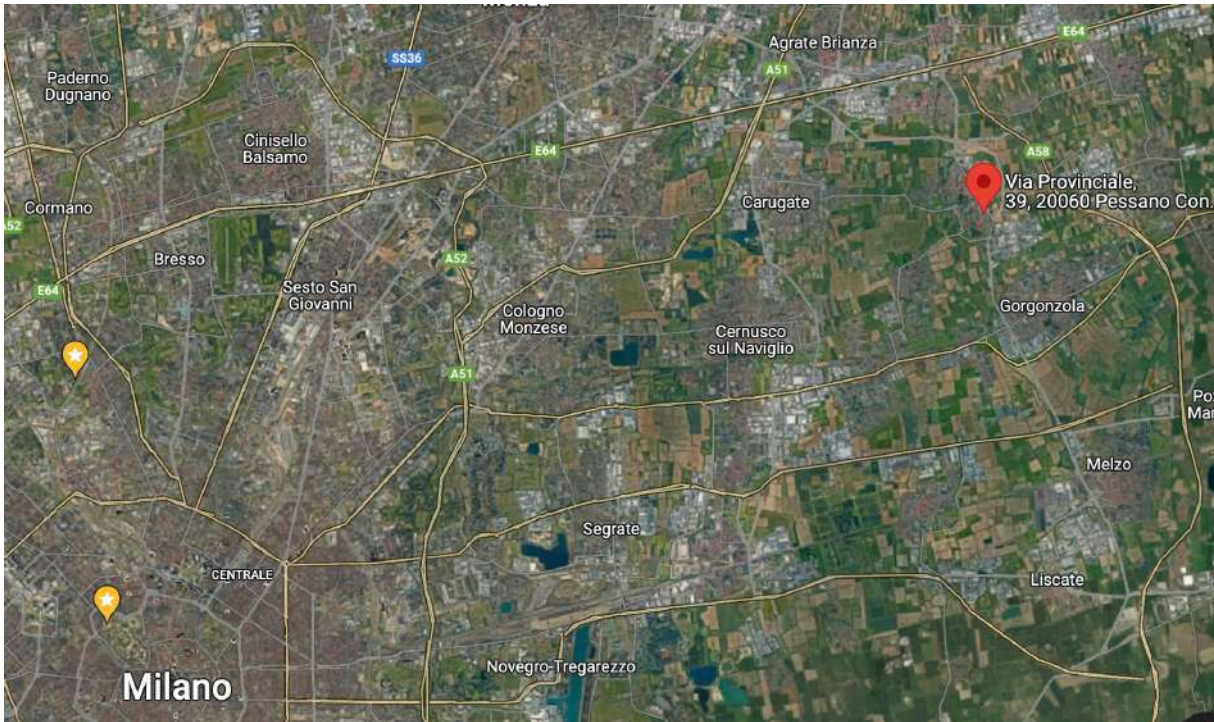


Foto 3-5 – PALAZZINA ESTERNA ED ACCESSI



Foto 6,7– ANDRONE E SCALE COMUNI, ASCENSORE

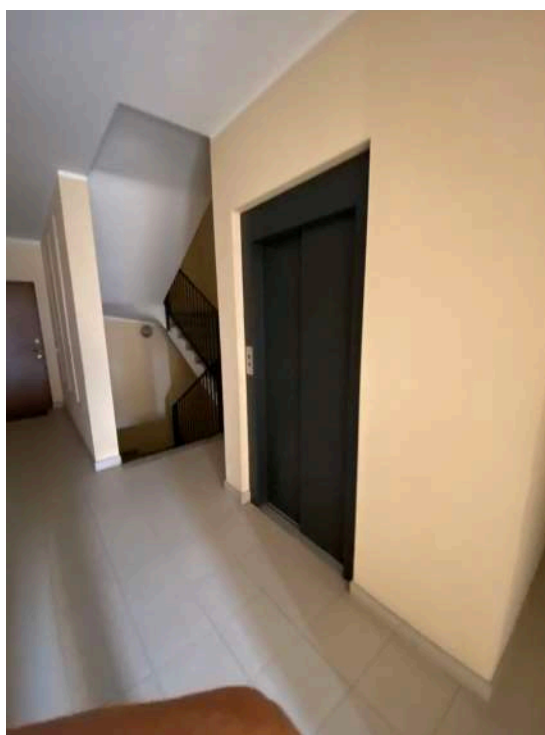
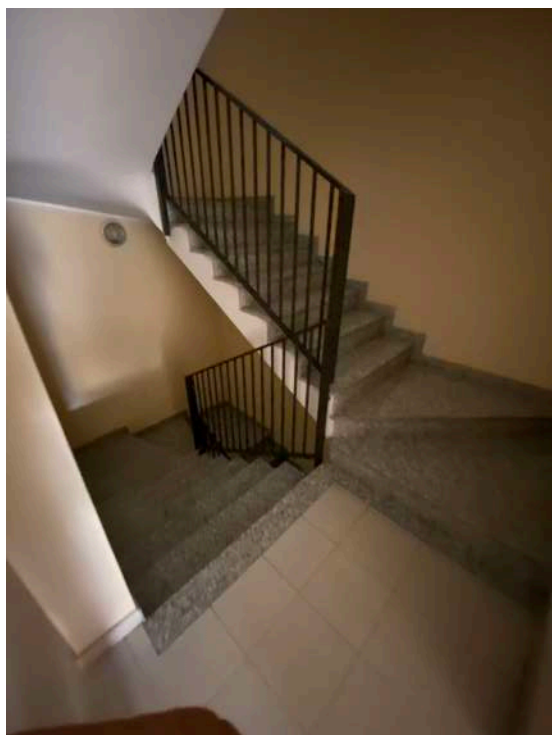
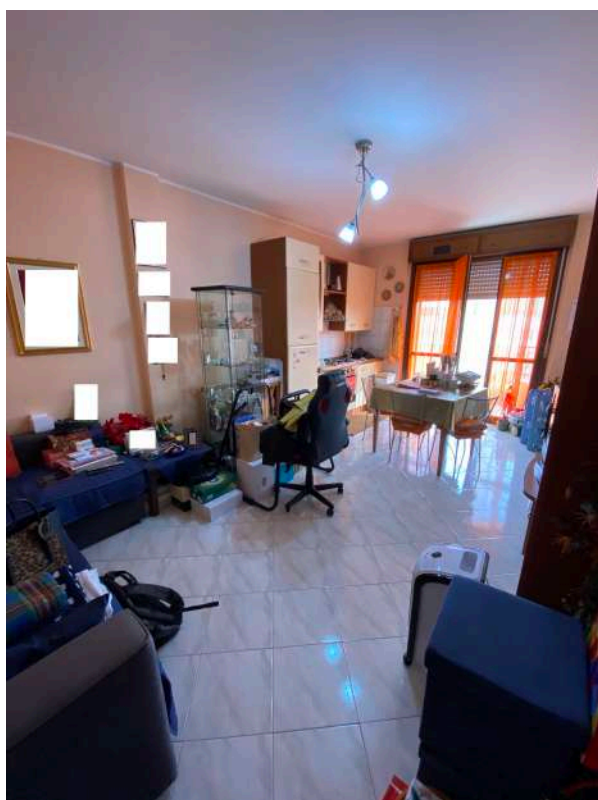
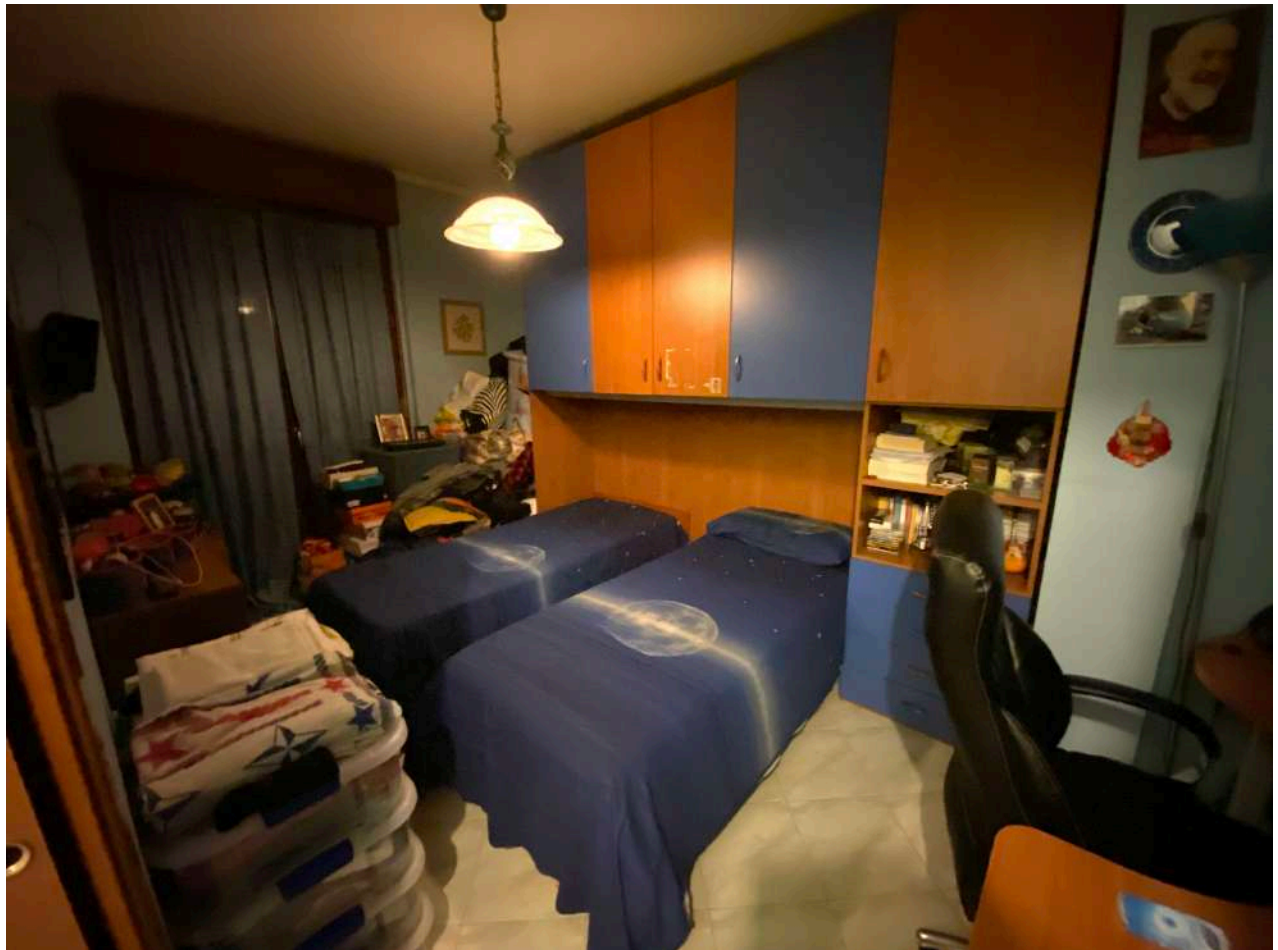
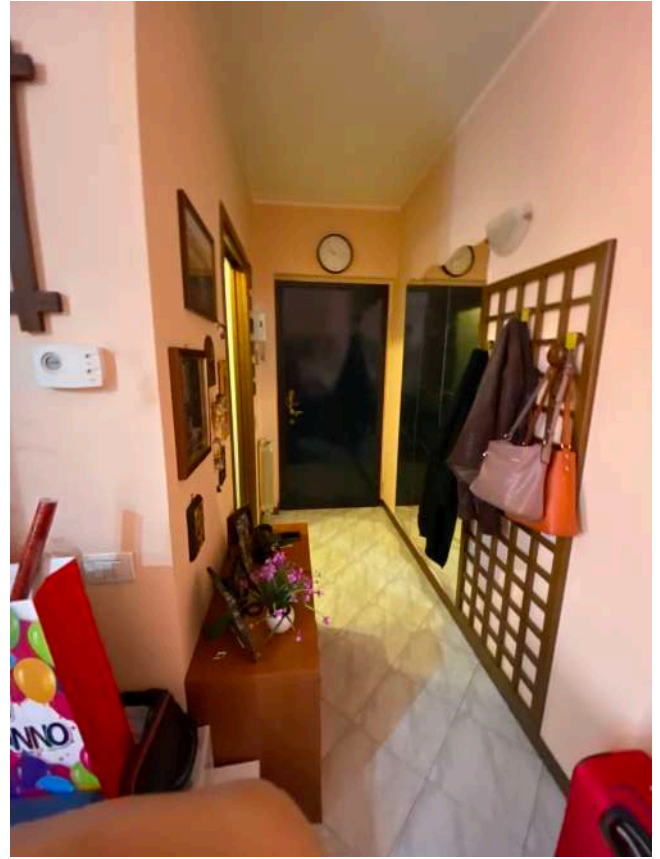


Foto 8-14– INTERNI BENE





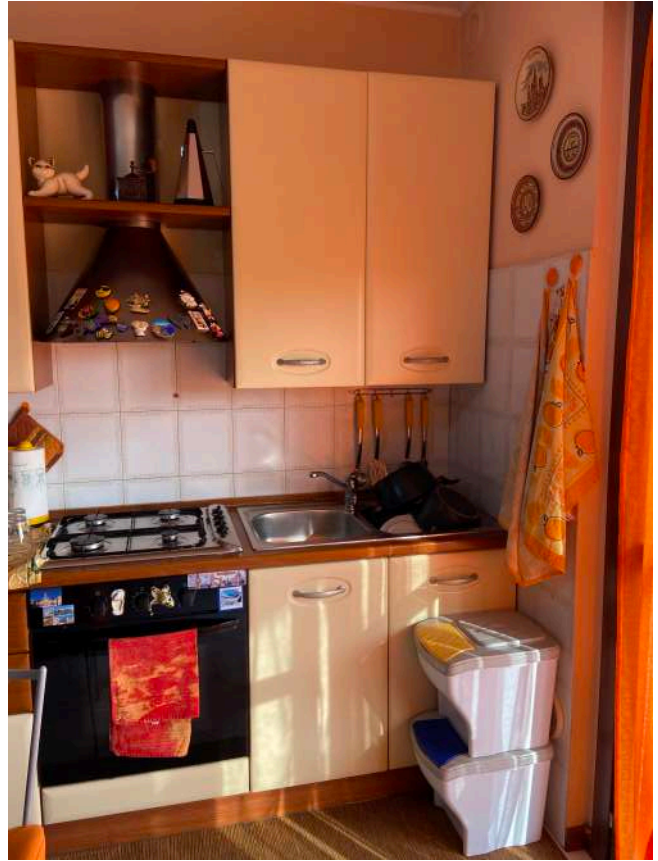
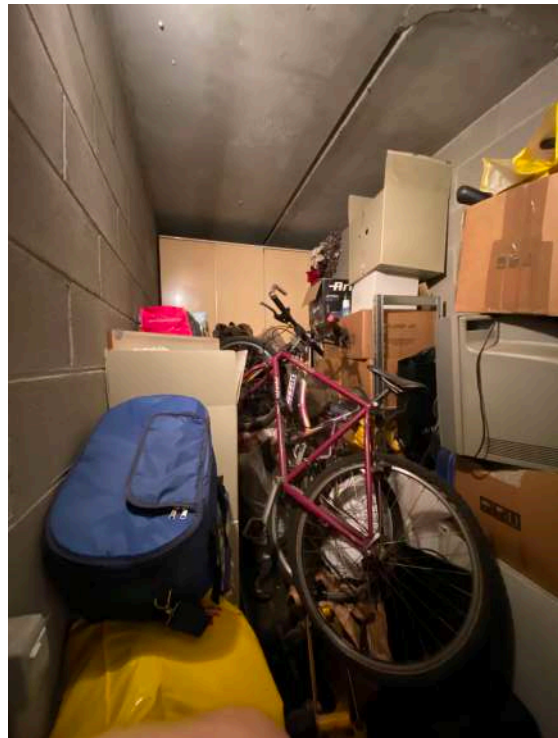
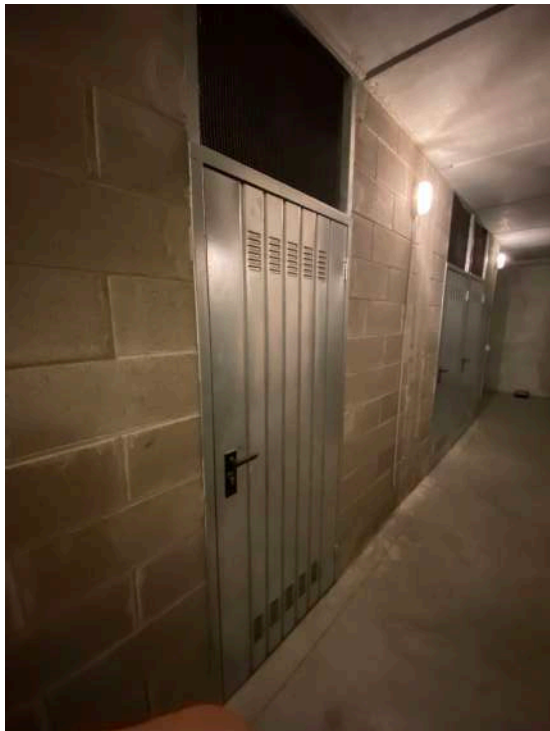


Foto 15/19 VISTE CANTINA BOX CORSELLI



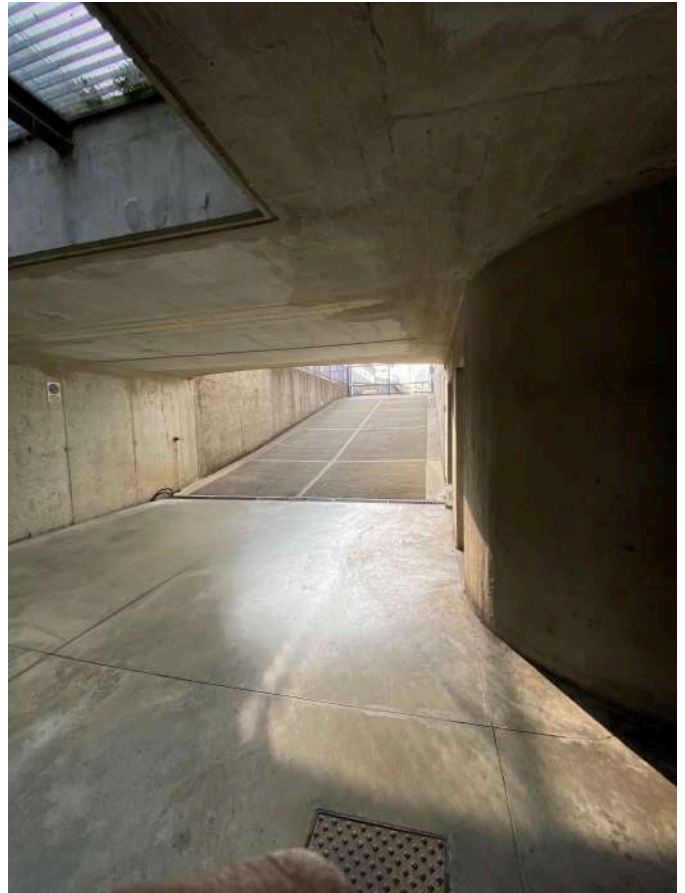
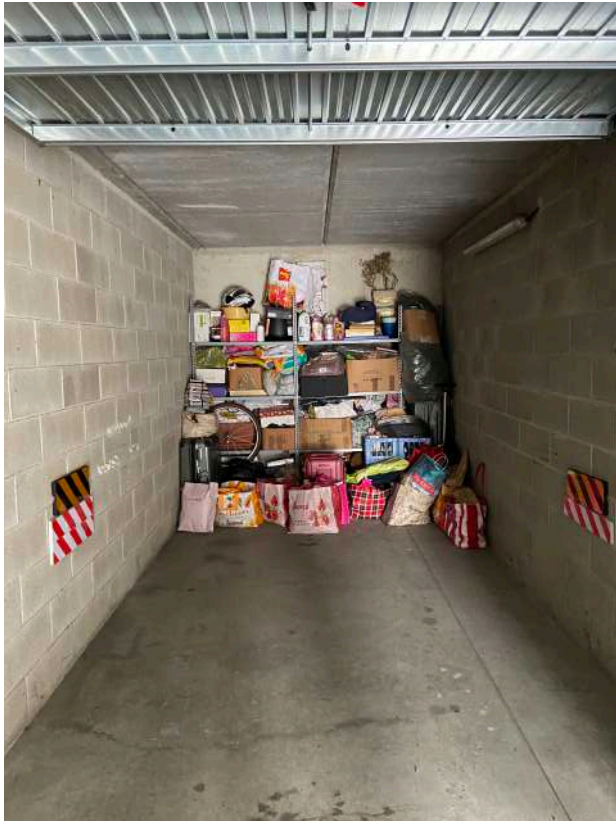


Foto 20/23 BALCONE E PARTICOLARI

