

Immobile sito in: Venezia - Mestre , via A. Lazzari 10 , Piano S1 - 5° - 6°
 Comune di Venezia: Fig. 135 - Map. 2438 - Sub 10, 20 . Ditta: Simeone Massimo
 ESECUZIONE IMMOBIL. R.G.E. 108/22 - GIUDICE ESECUT.: GABRIELLA ZANON

DOCUMENTAZIONE FOTOGRAFICA

lav. n. 5

stato di fatto
 data
 scala 1:1000

C.T.U.: Arch. ANTONIO BASSO , v.le Amerigo Vespucci, 43/B , Mestre-Venezia , cell. 3477198100



foto 1

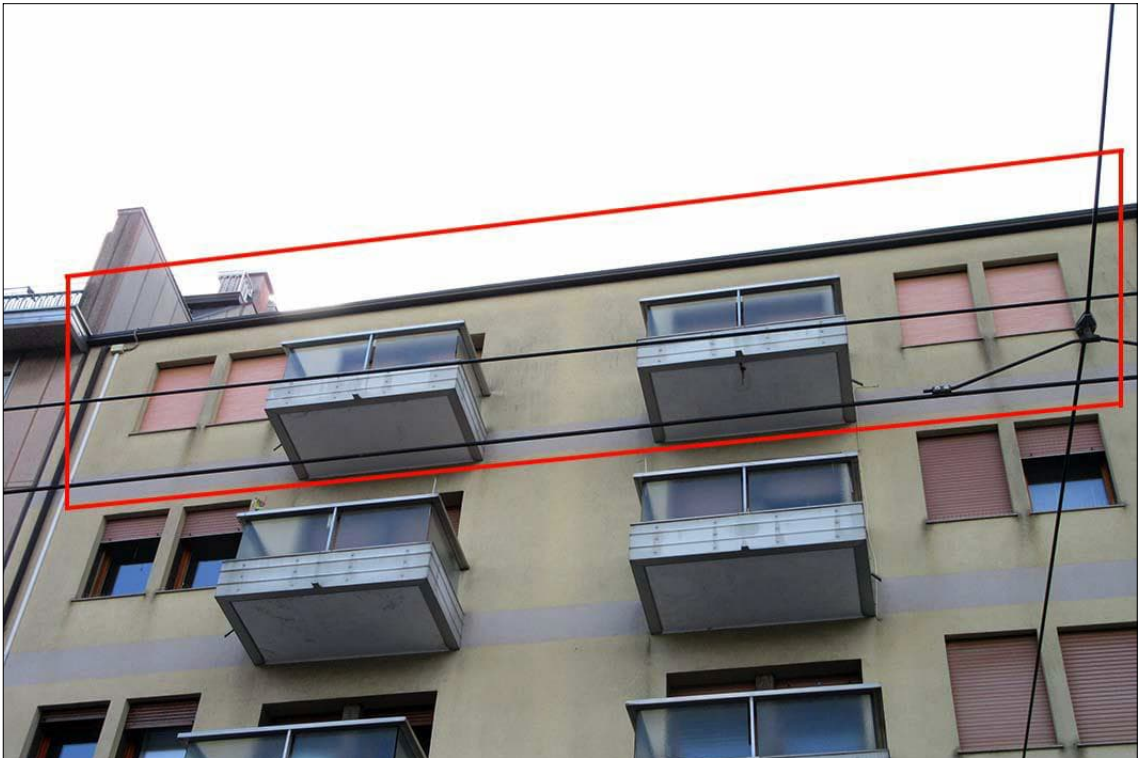


foto 2

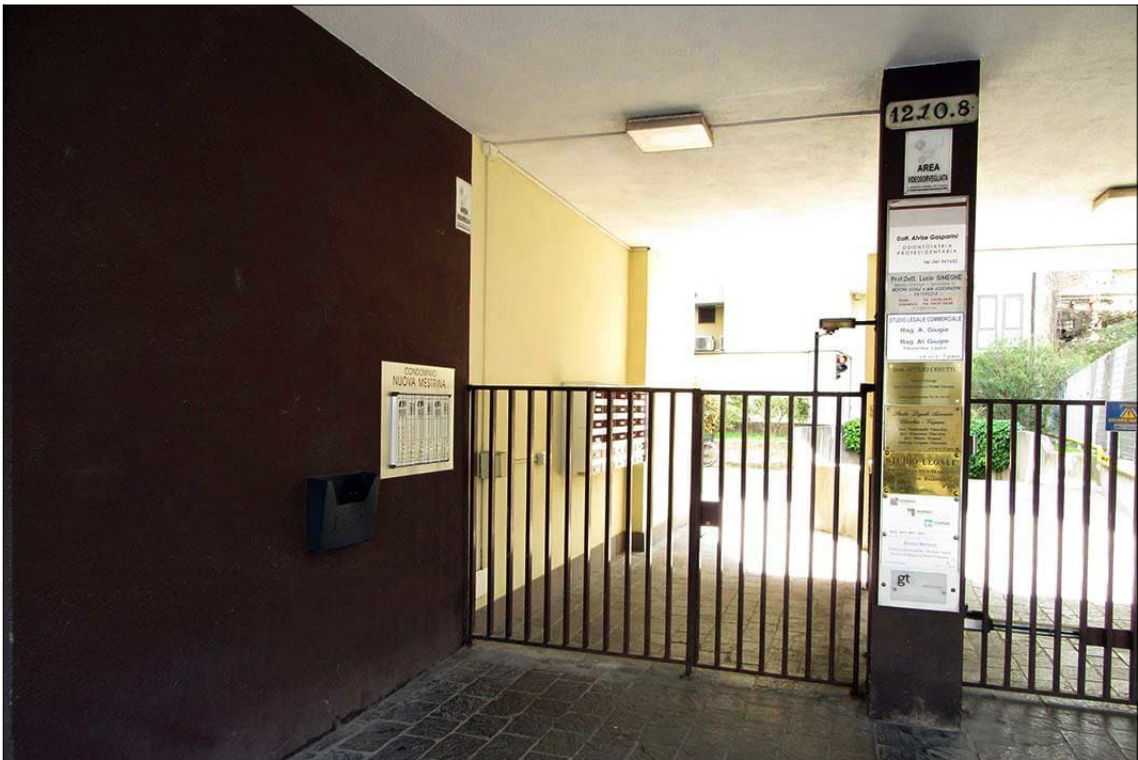


foto 3



foto 4



foto 5



foto 6



foto 7



foto 8



foto 9



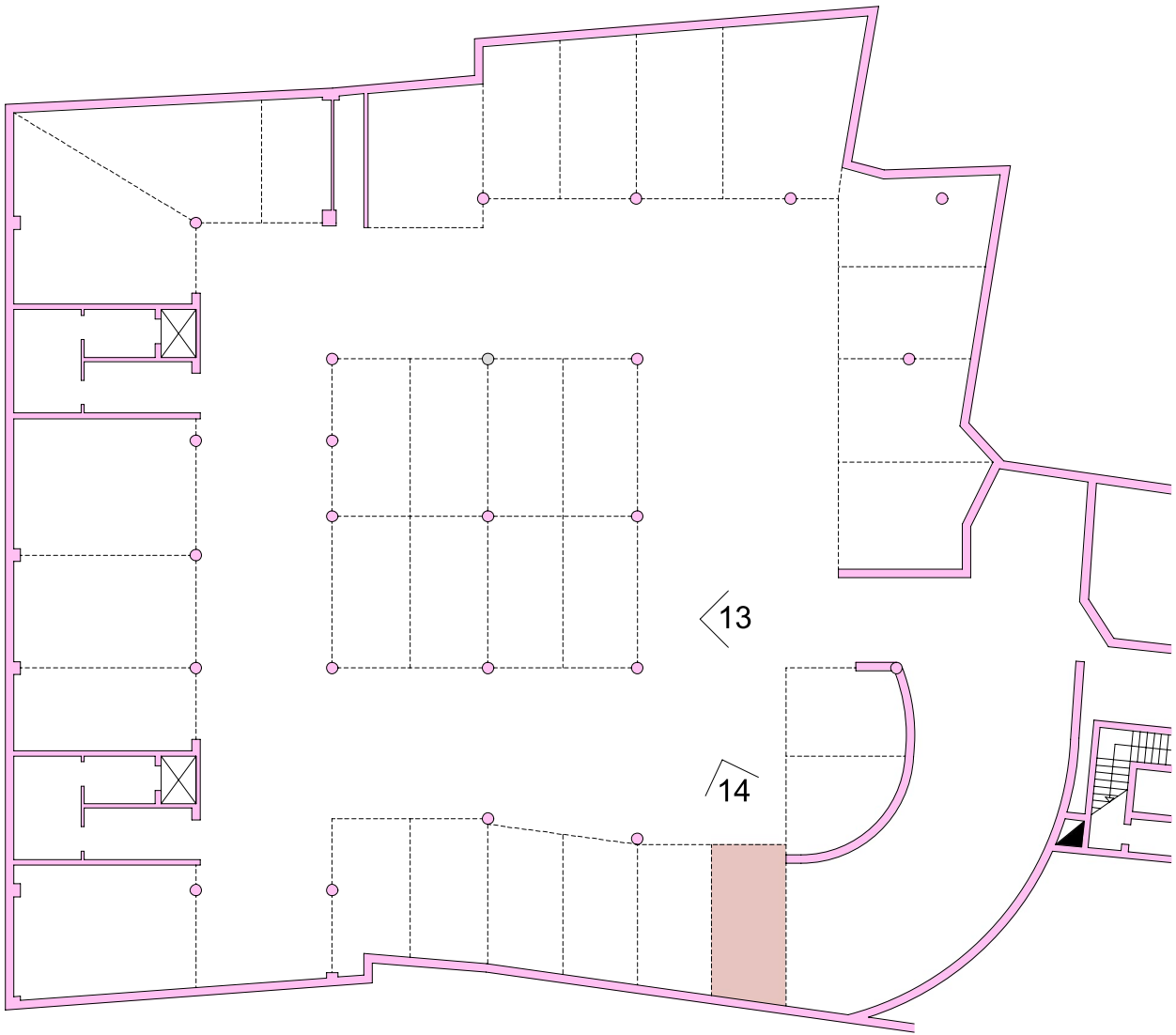
foto 10



foto 11



foto 12



PIANO SEMINTERRATO

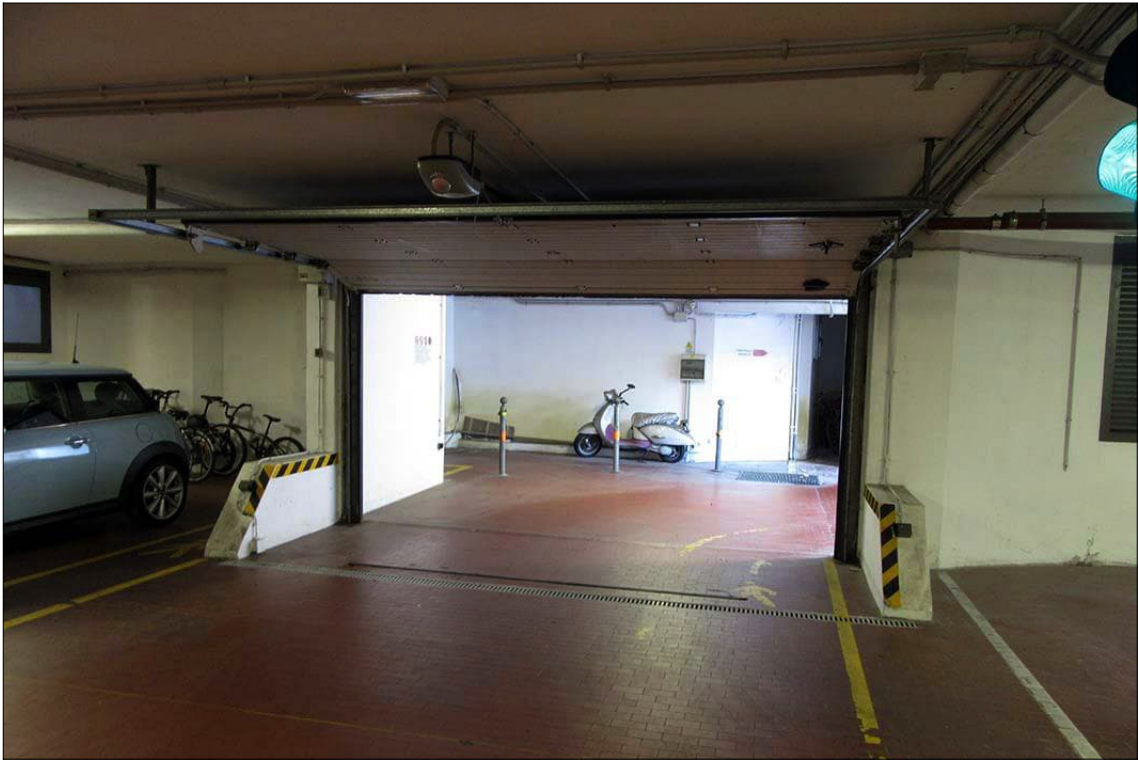
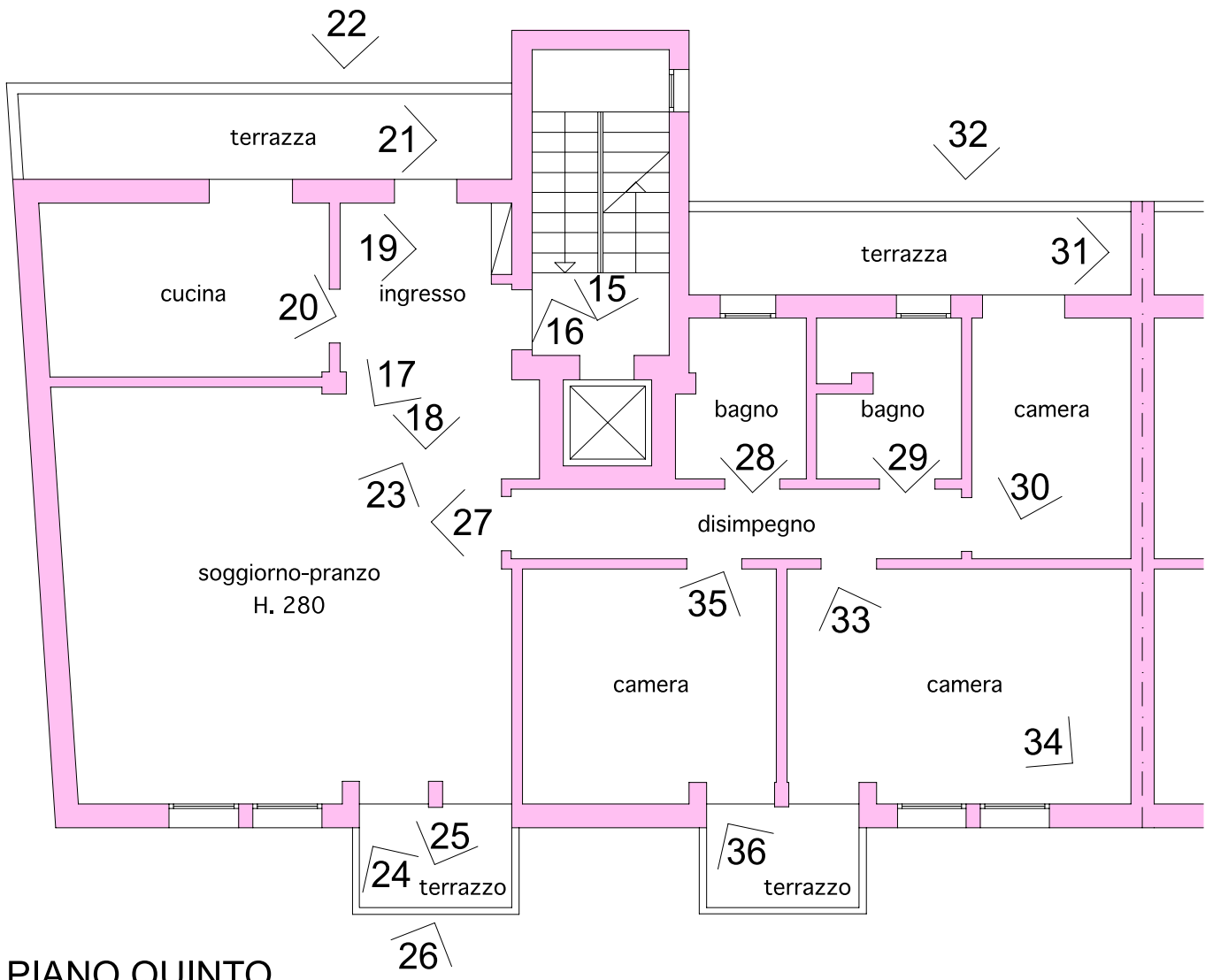


foto 13



foto 14



PIANO QUINTO



foto 15



foto 16



foto 17



foto 18



foto 19

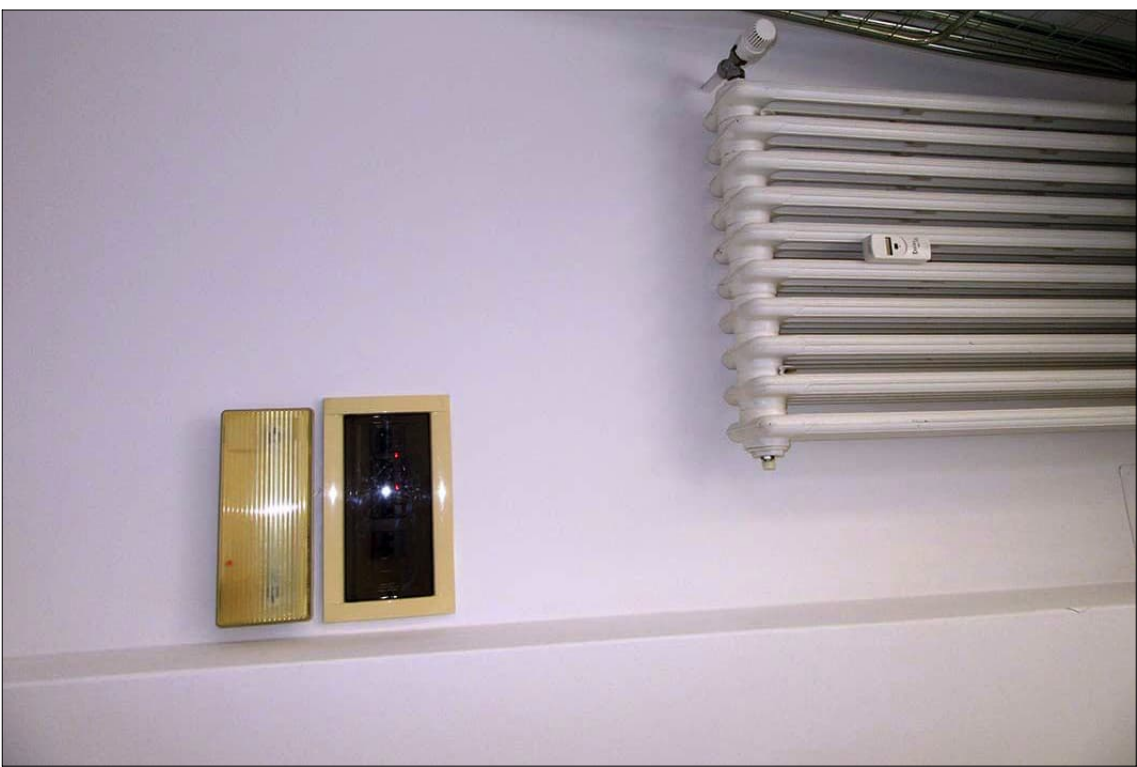


foto 20



foto 21

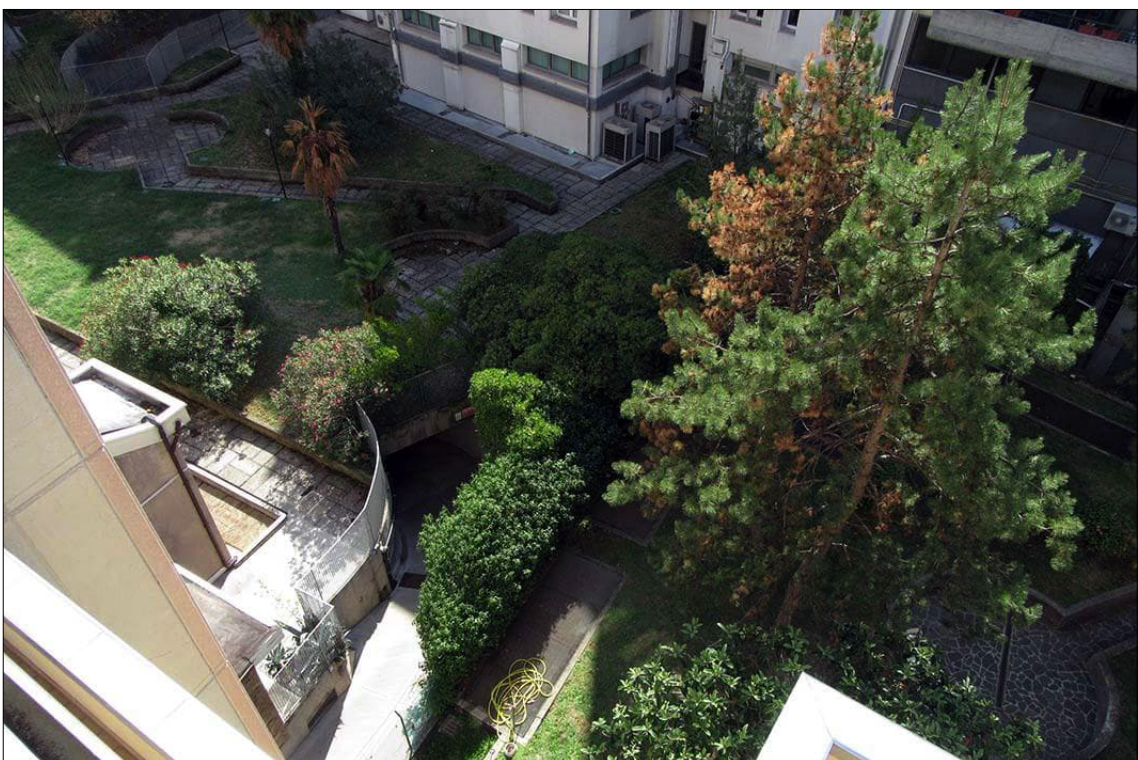


foto 22



foto 23



foto 24



foto 25



foto 26



foto 27



foto 28



foto 29

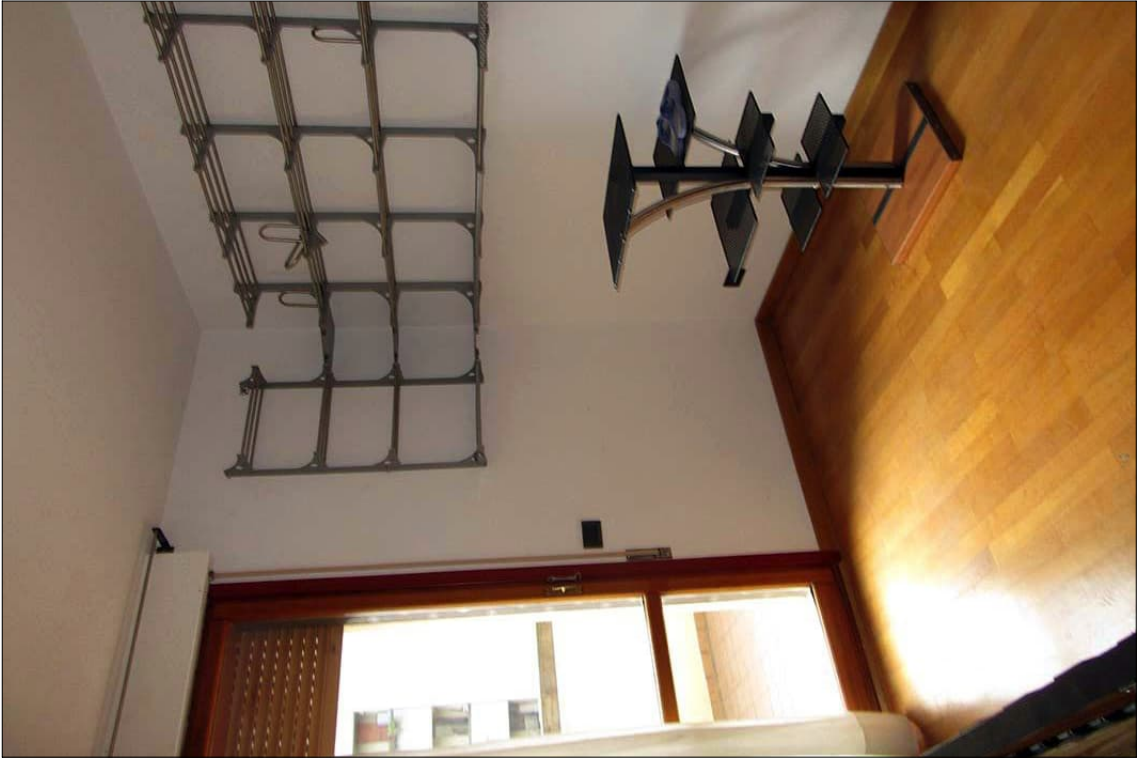


foto 30



foto 31

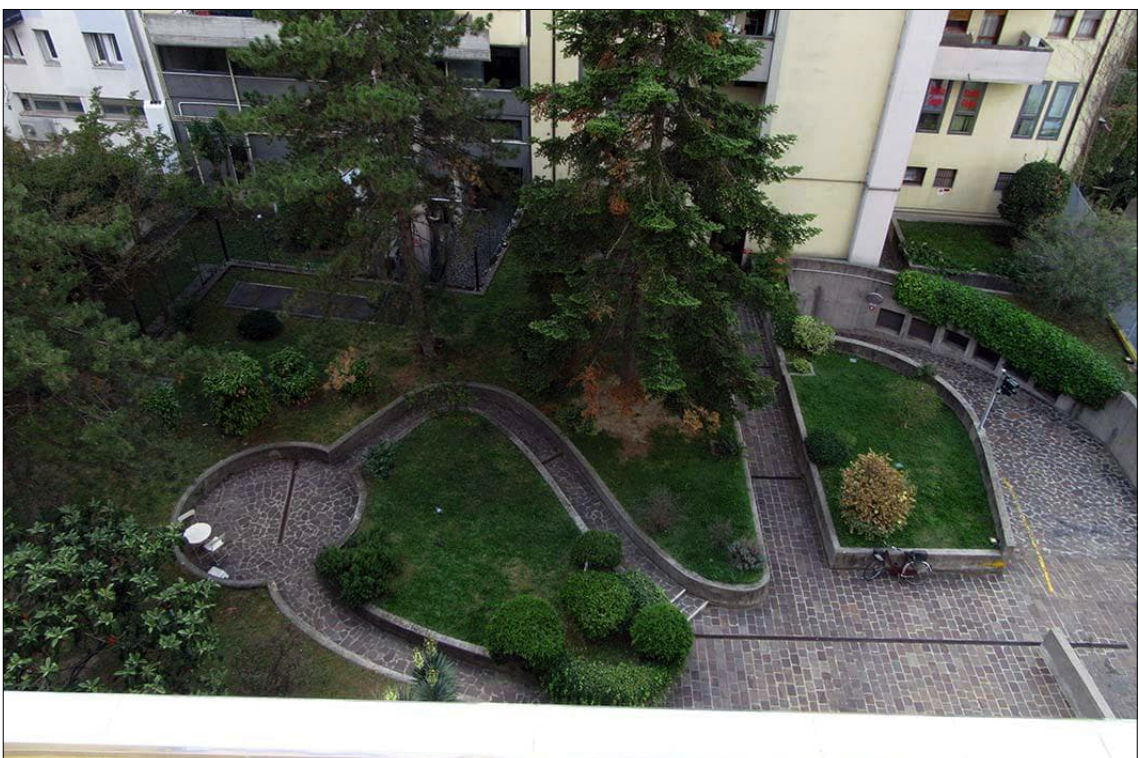


foto 32



foto 33



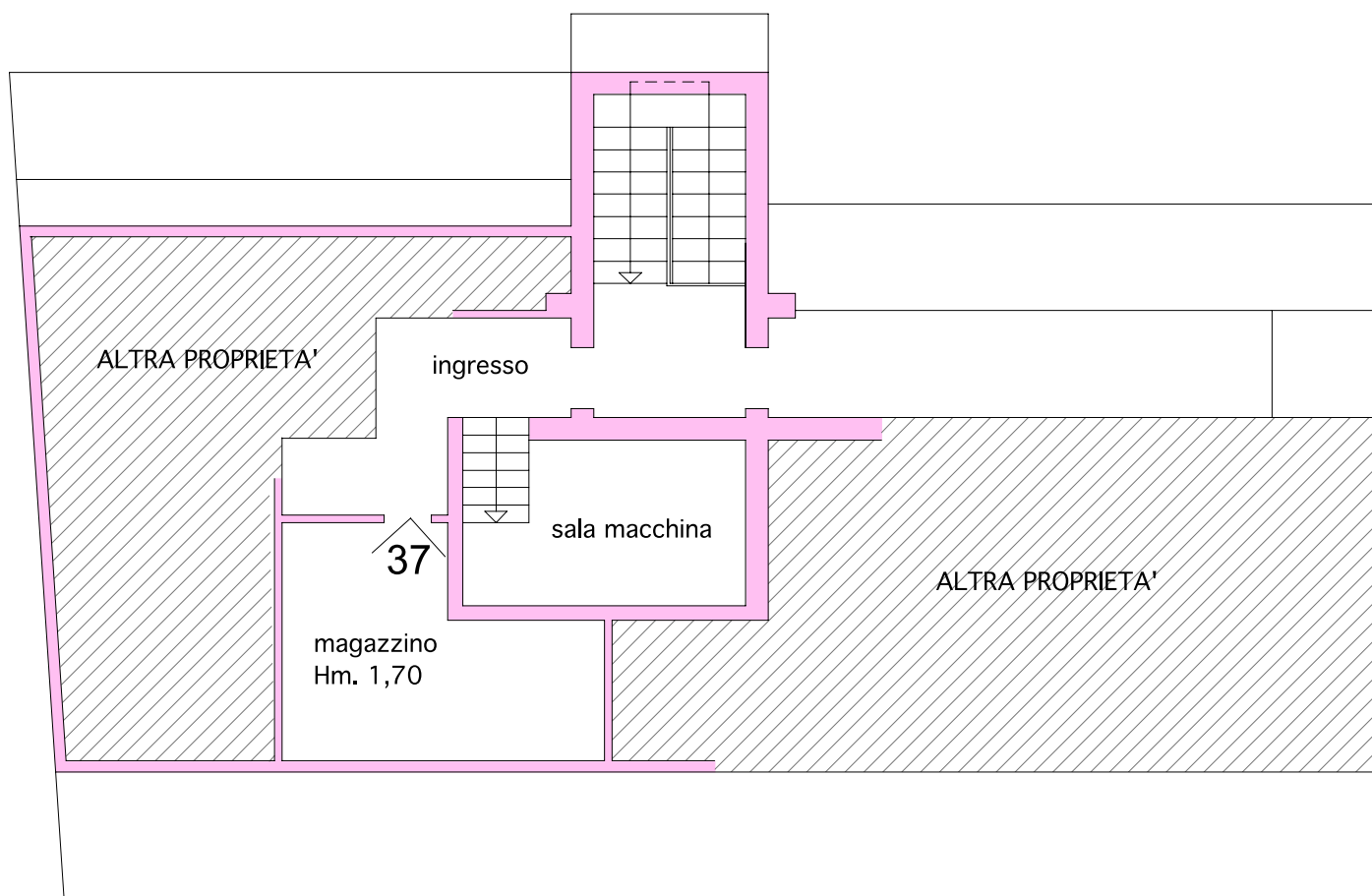
foto 34



foto 35



foto 36



PIANO SESTO



foto 37