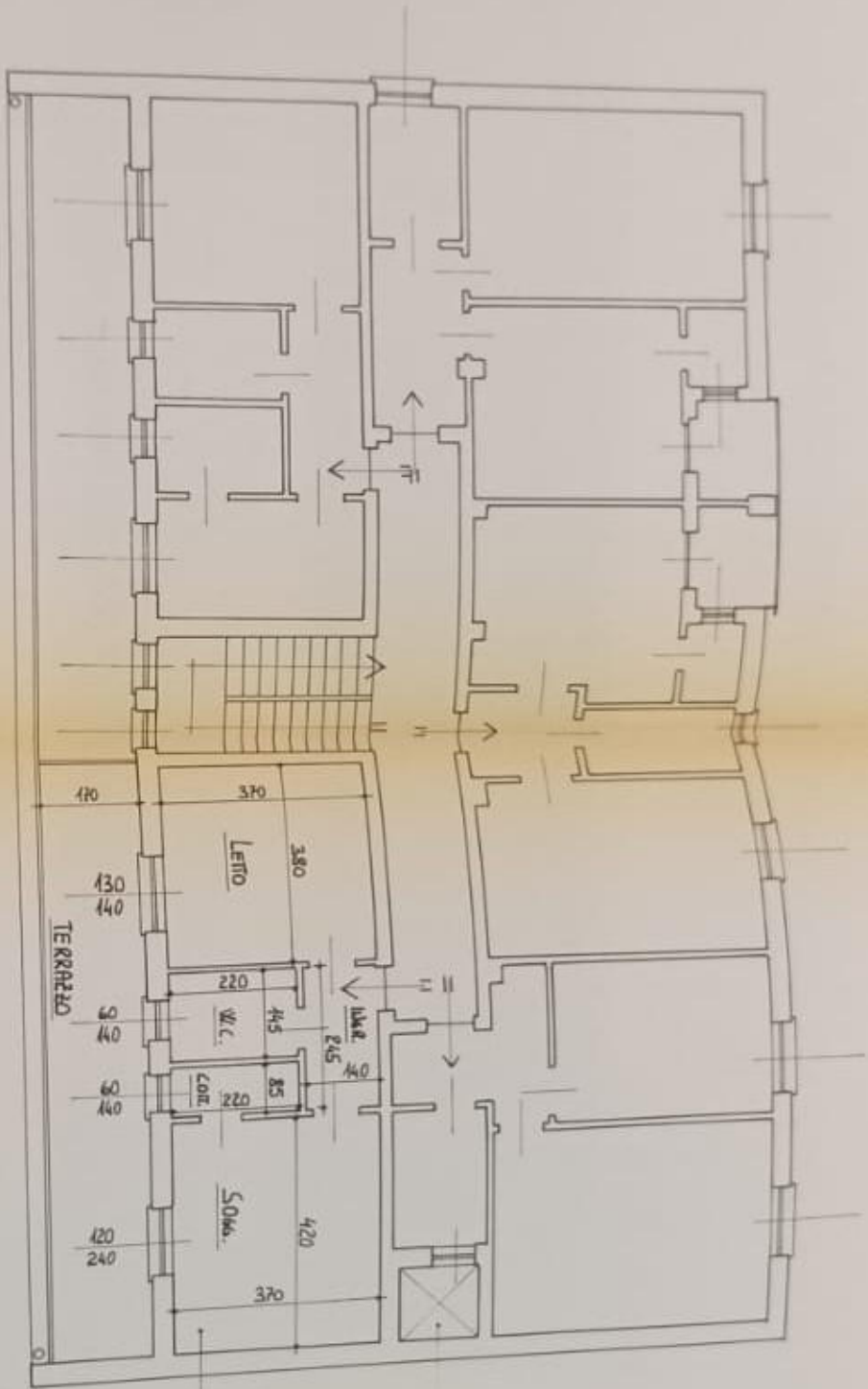


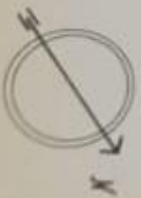
Via della MARTINELLA

SUPERFICIE NETTA APPARTAMENTO = mq 38,09
 $(3,80 \times 3,80) + (2,05 \times 1,40) + (4,20 \times 3,30) + (0,90 \times 1,20) + (0,55 \times 1,20)$



CANTIERO GERARDINE SERRA

H LOCALI = cm 290



PIANTA PIANO INTERRATO

