

ALLEGATO 3: Rilievo fotografico generale (Marzo 2016)



Foto 1: prospetto principale edificio



Foto 2: ballatoio comune d'accesso all'immobile



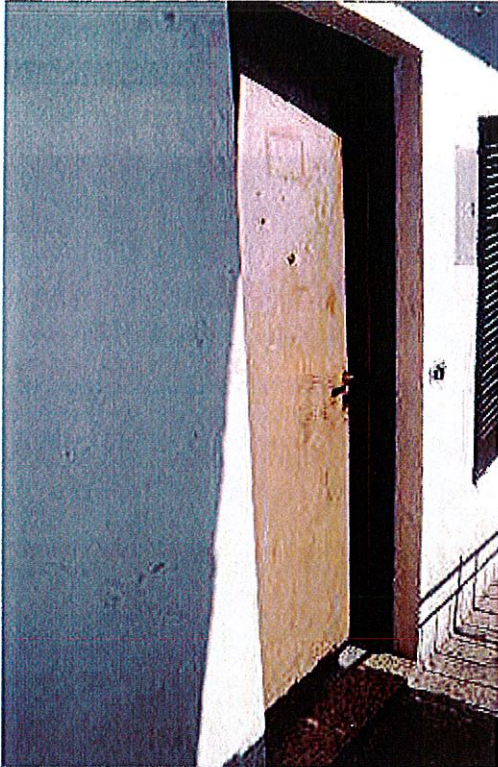


Foto 3: porta d'accesso all'immobile

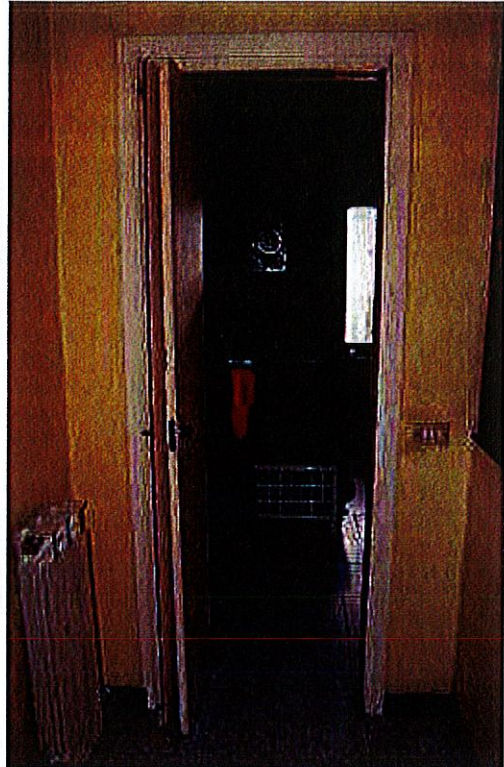


Foto 4: disimpegno



Foto 5: cucina



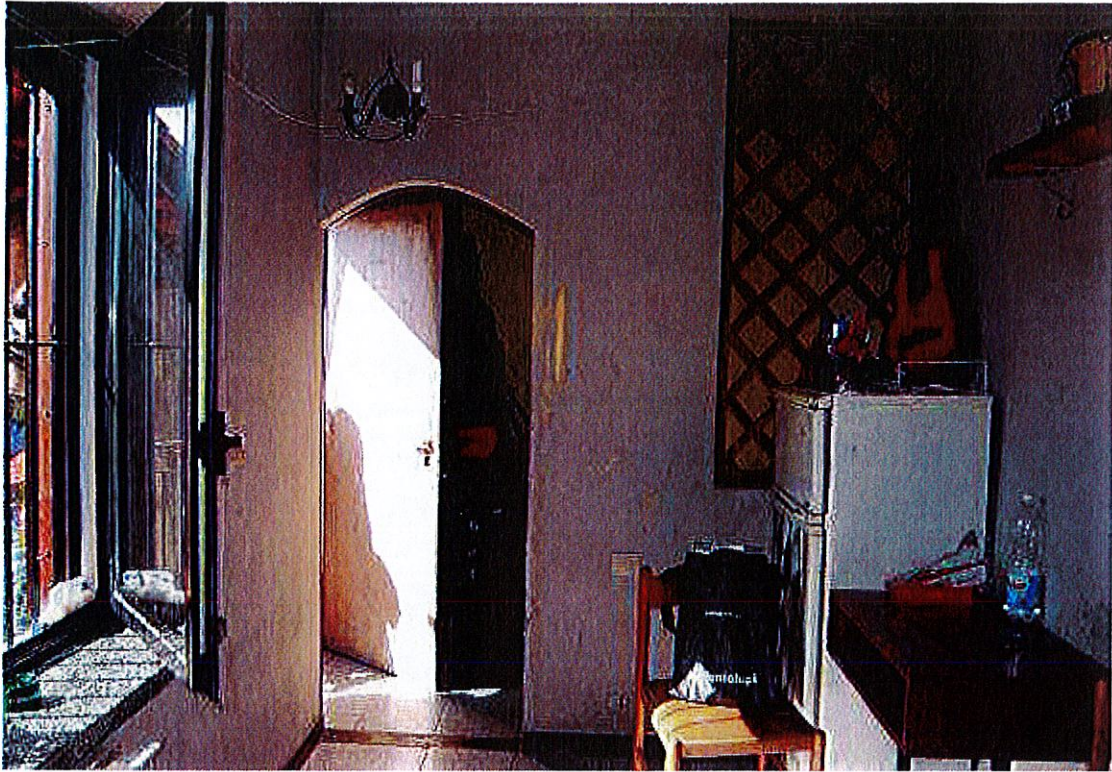


Foto 6: cucina



Foto 7: camera





Foto 8: camera

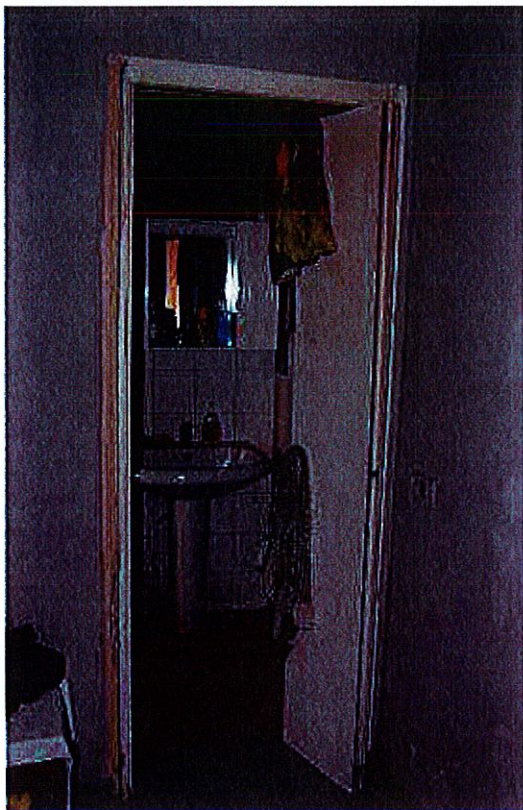


Foto 9: antibagno

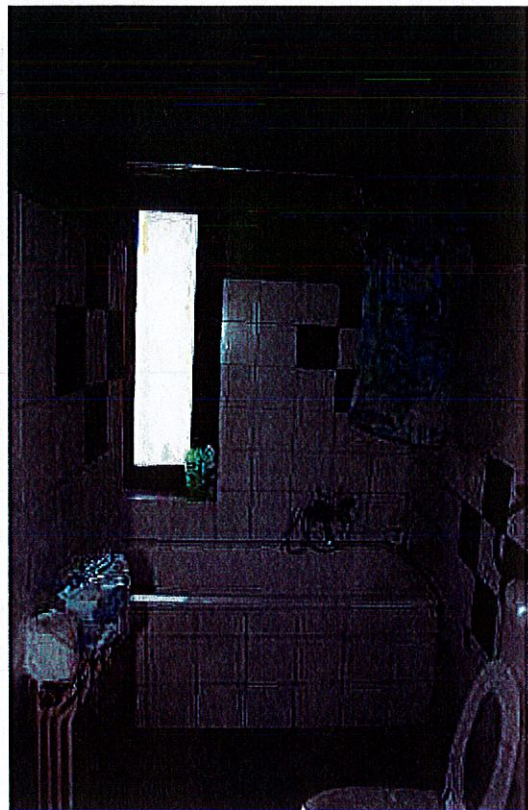
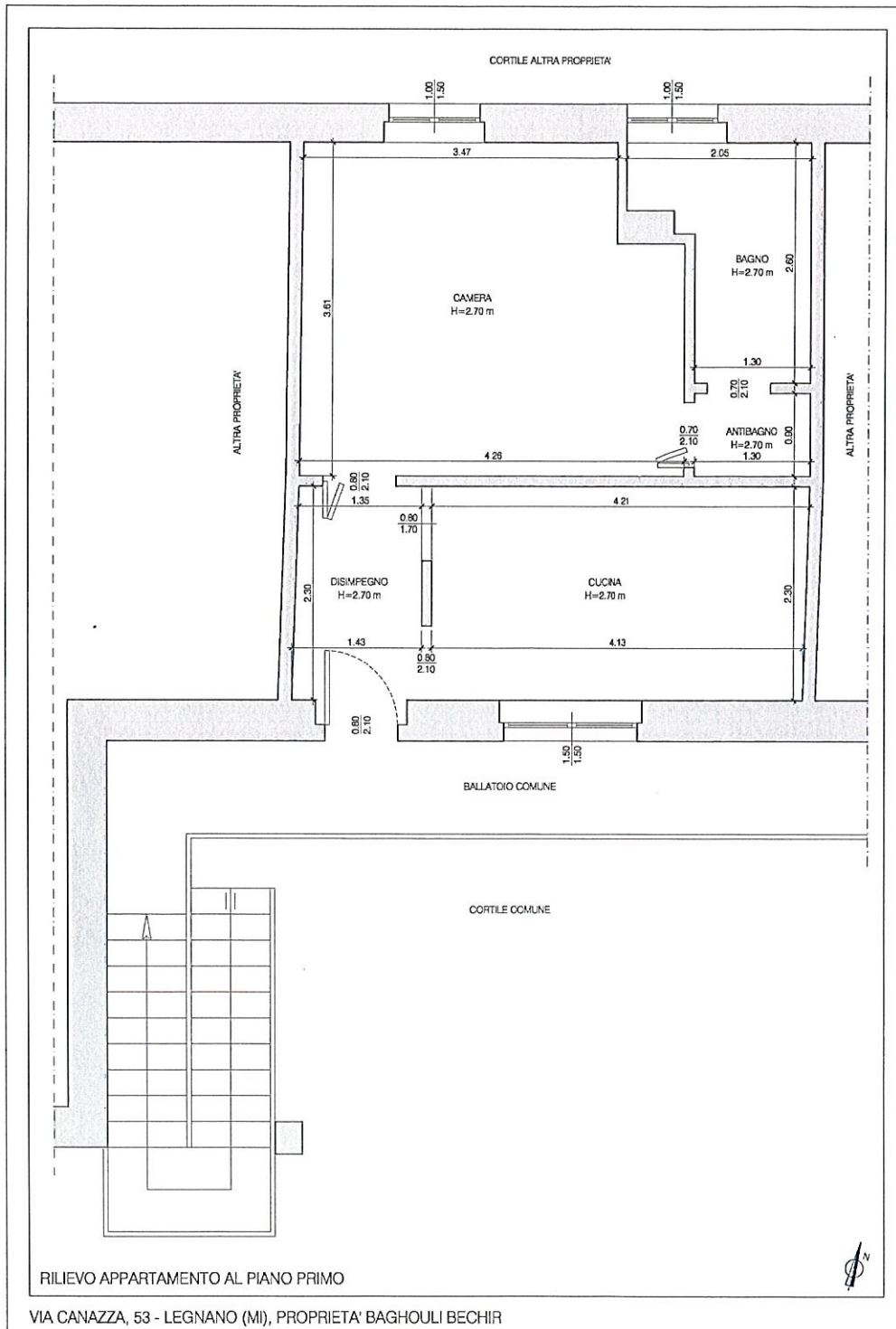


Foto 10: bagno

Milano, 31 marzo 2016

Il C.T.U.  
Arch. Barbara Pighi





Milano, 31 marzo 2016

Il C.T.U.  
Arch. Barbara Pighi



