

TRIBUNALE DI PORDENONE
Sezione Esecuzioni Immobiliari
Giudice dell' Esecuzione **Dott.ssa Roberta BOLZONI**

Esecuzione immobiliare n. 179/16

ALLEGATO 4

- Documentazione fotografica

ABITAZIONE



FOTO 28



FOTO 29



FOTO 30



FOTO 31



FOTO 32



FOTO 33



FOTO 34

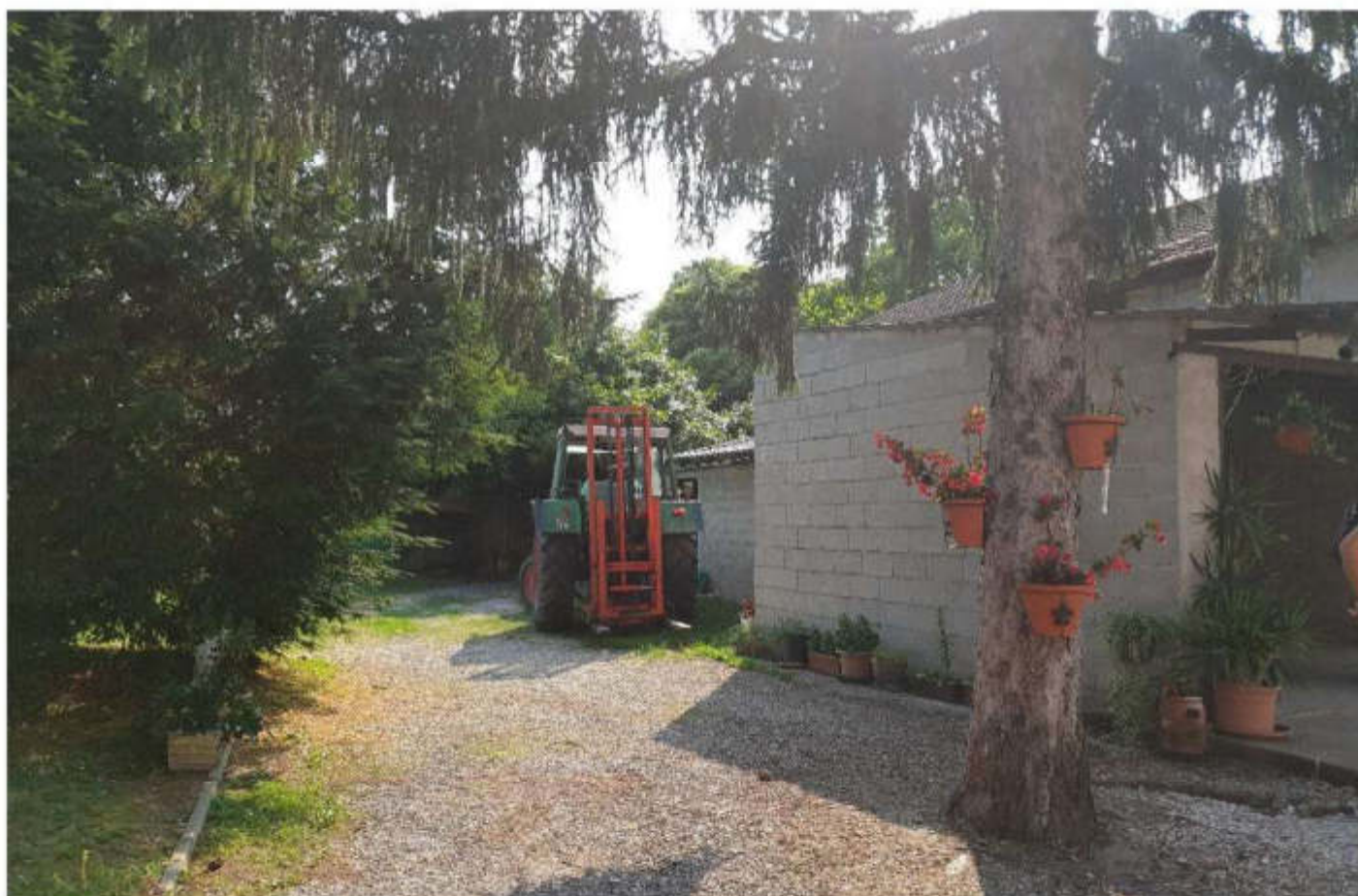


FOTO 35



FOTO 36

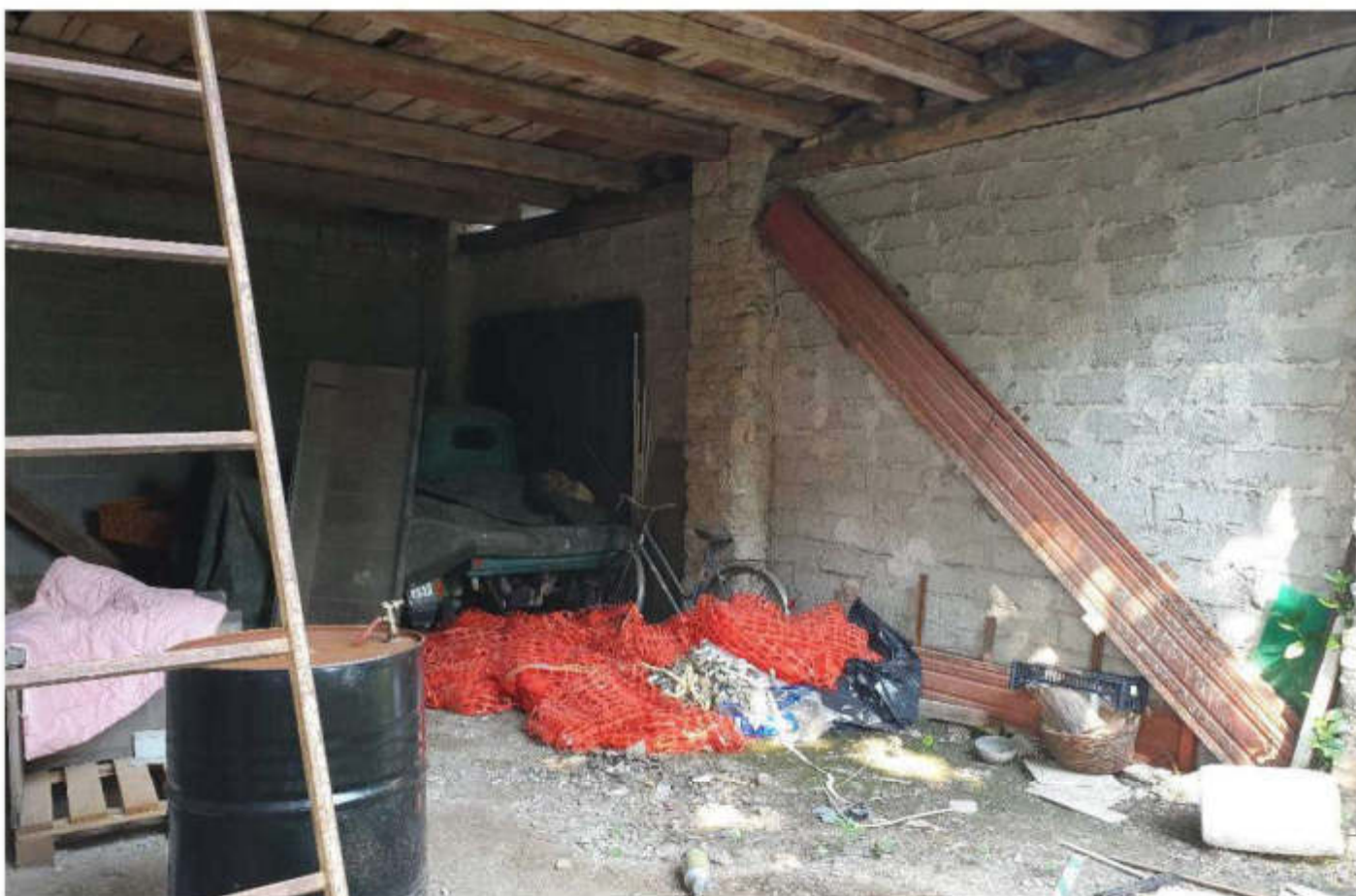


FOTO 37



FOTO 38



FOTO 39

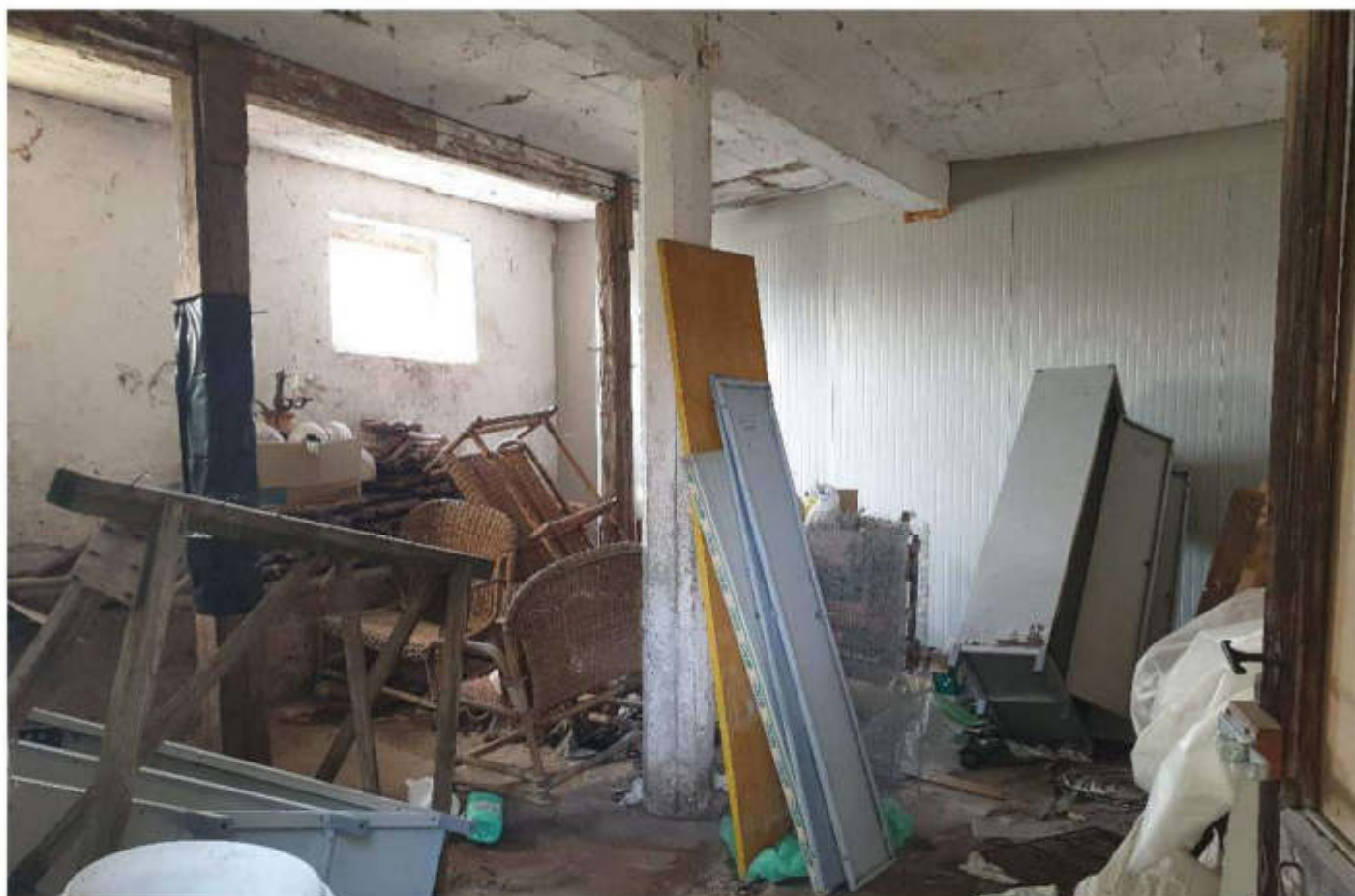


FOTO 40



FOTO 41



FOTO 42

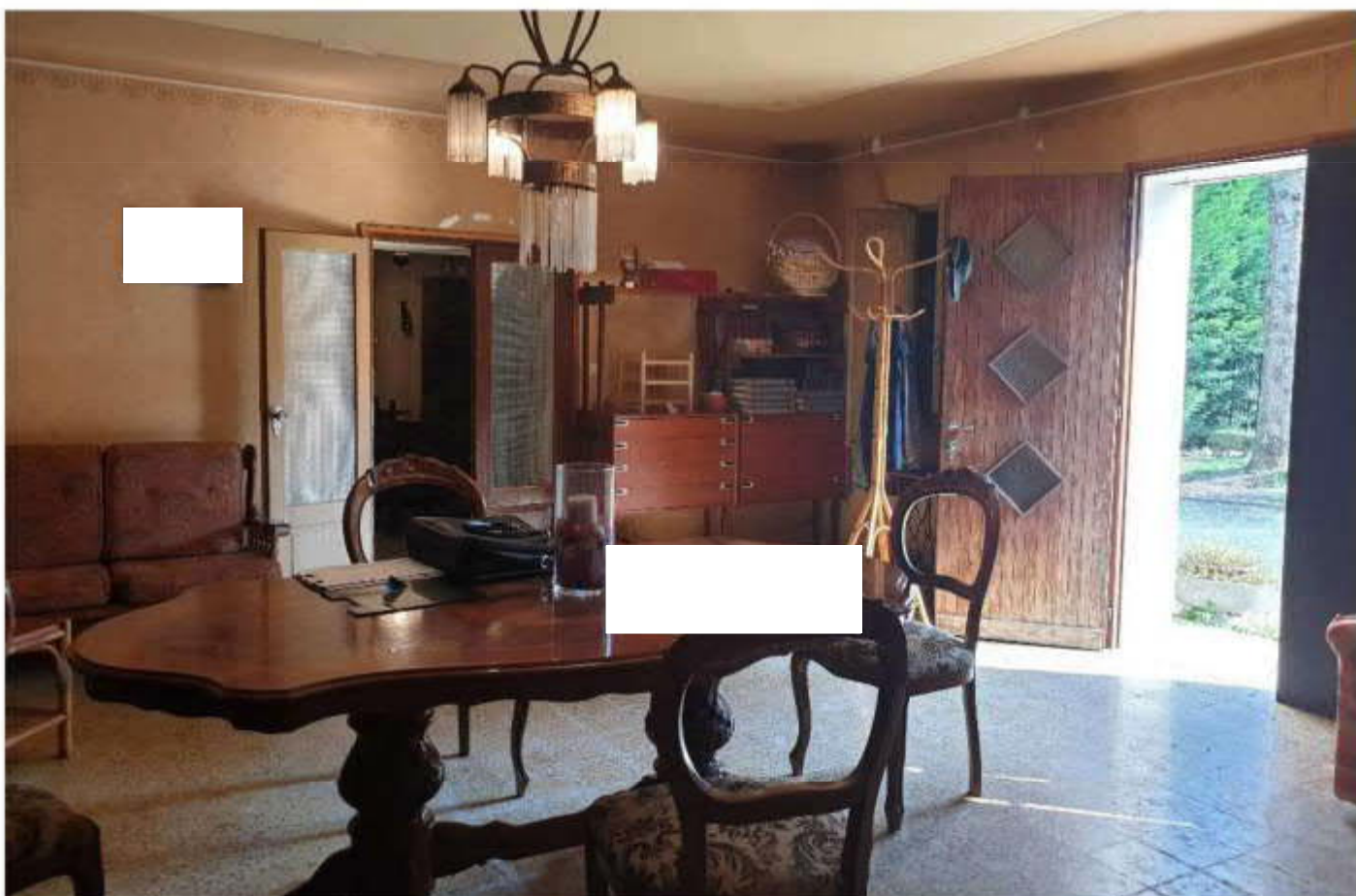


FOTO 43



FOTO 44



FOTO 45



FOTO 46

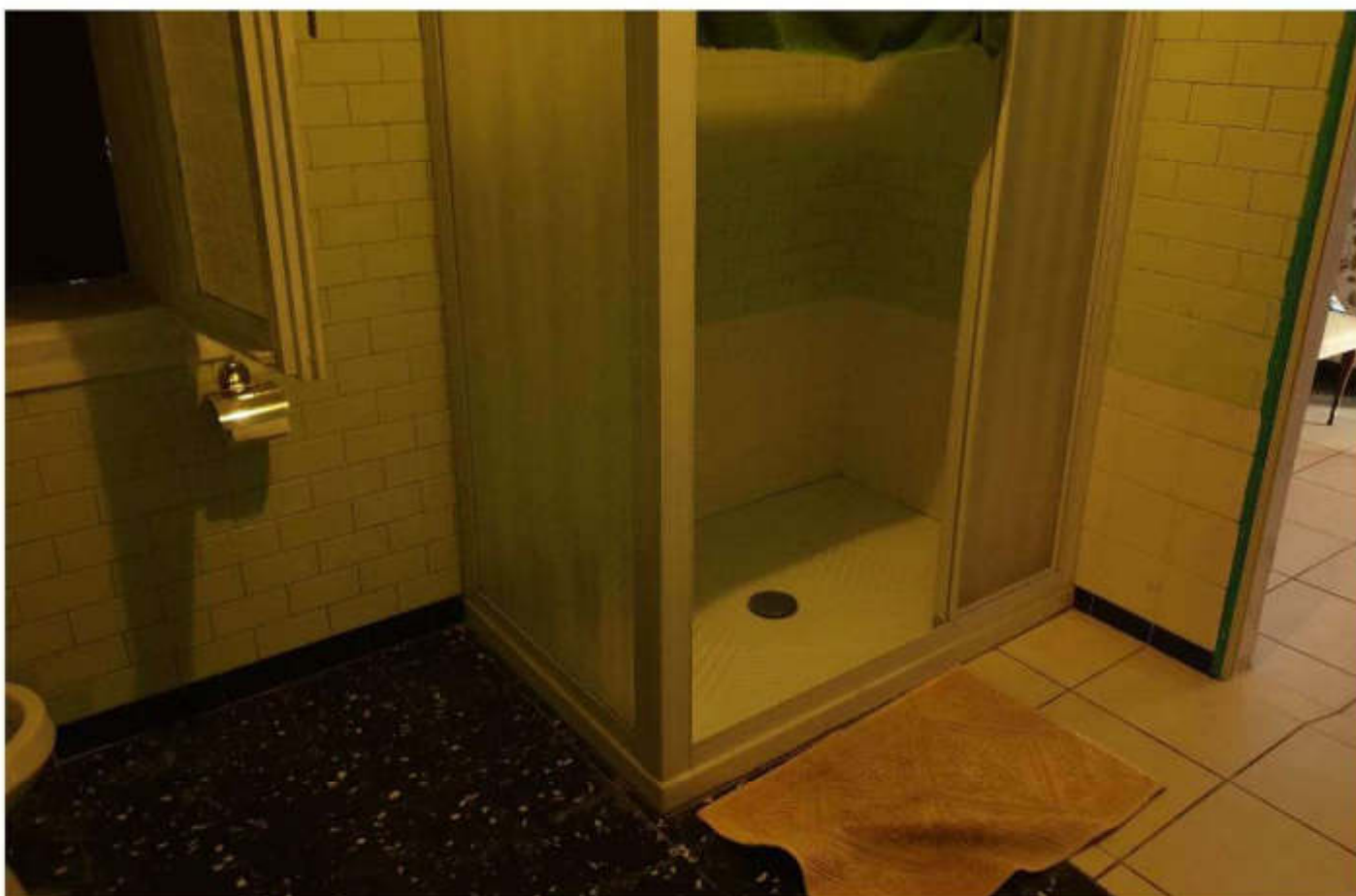


FOTO 47



FOTO 48

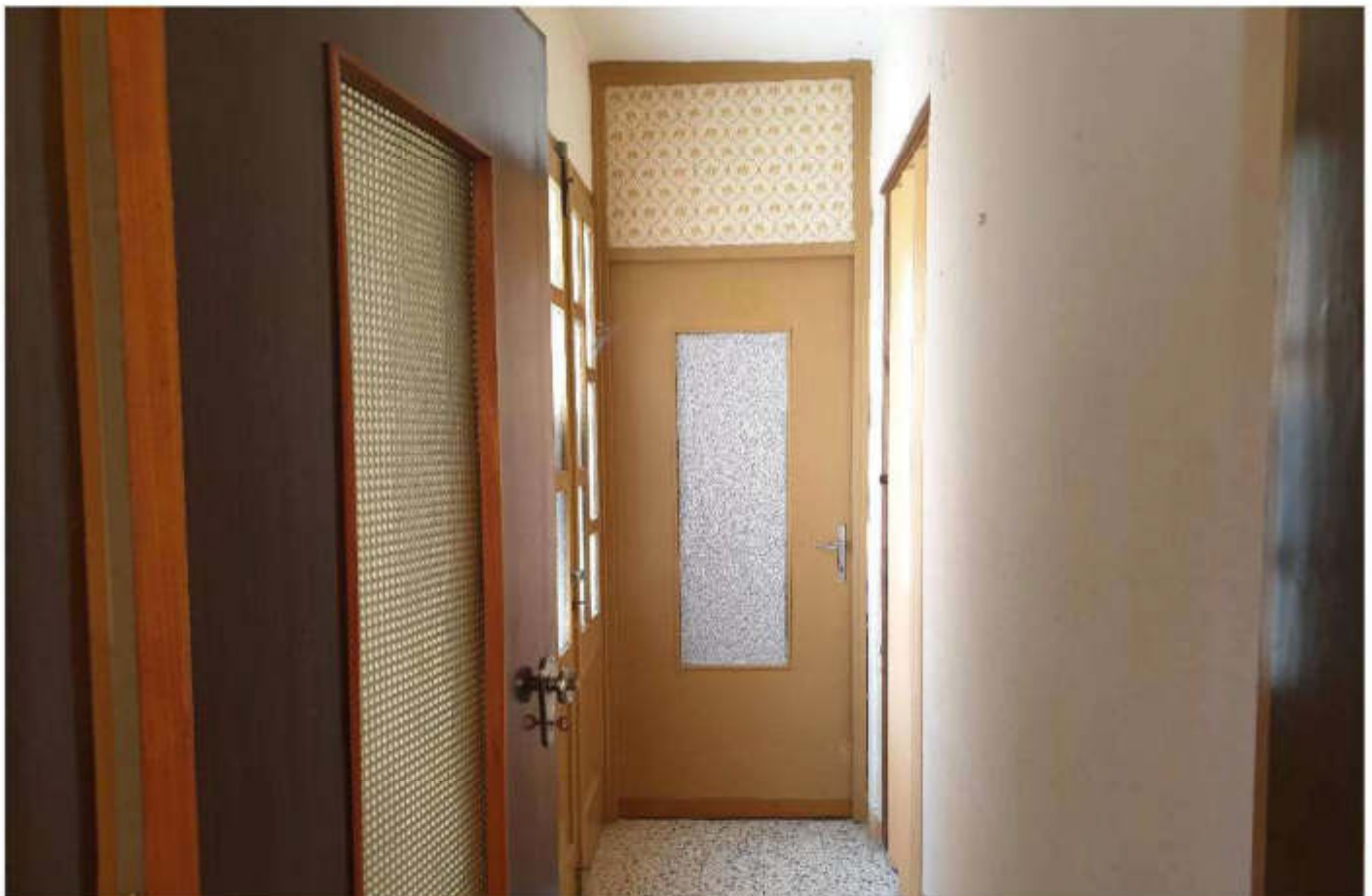


FOTO 49



FOTO 50

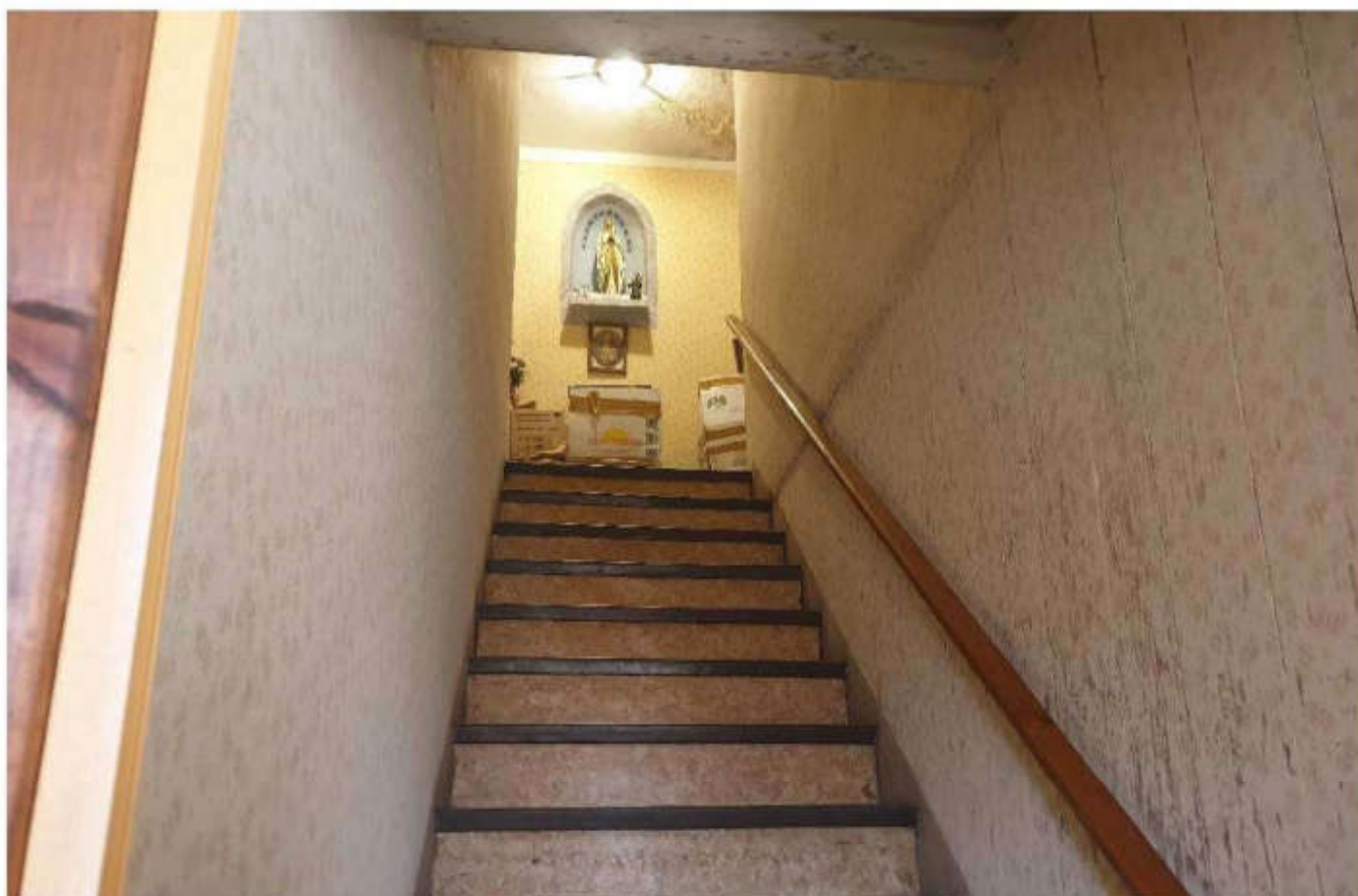


FOTO 51



FOTO 52



FOTO 53



FOTO 54



FOTO 55



FOTO 56



FOTO 57



FOTO 58



FOTO 59



FOTO 60



FOTO 61



FOTO 62



FOTO 63