

DOCUMENTAZIONE FOTOGRAFICA

*Via Vincenzo MONTI, 13*

*ARLUNO (MI)*



Vista del palazzo condominiale da via Monti.





L'intorno.



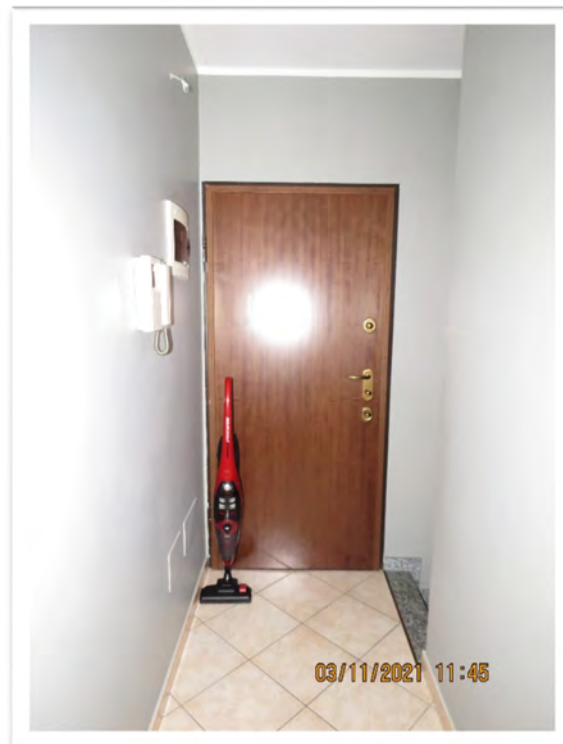


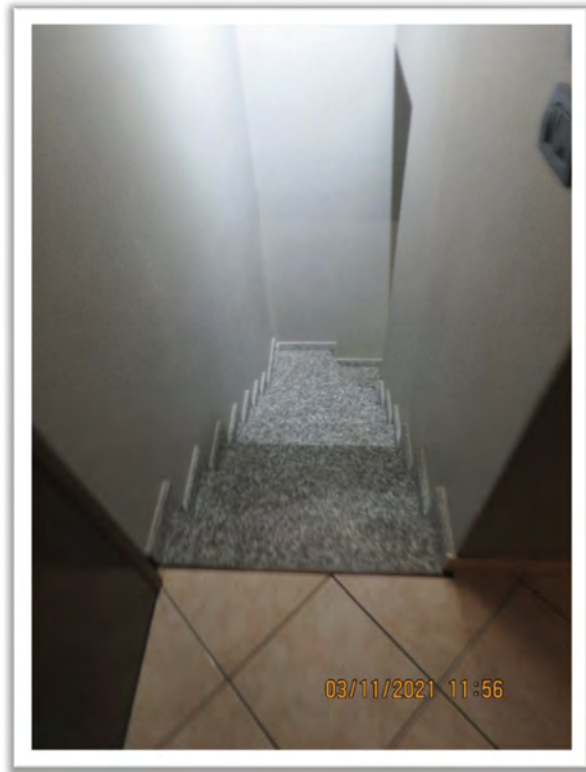
L'ingresso al vano scala B.



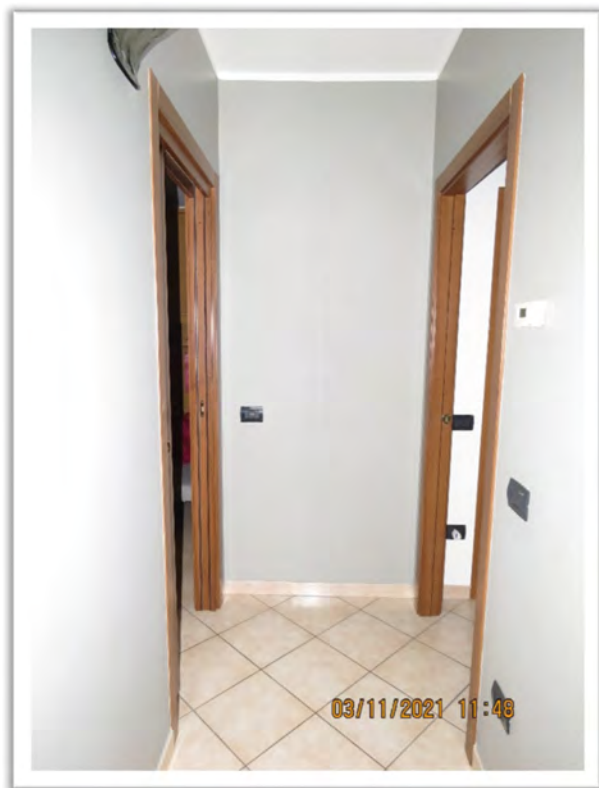


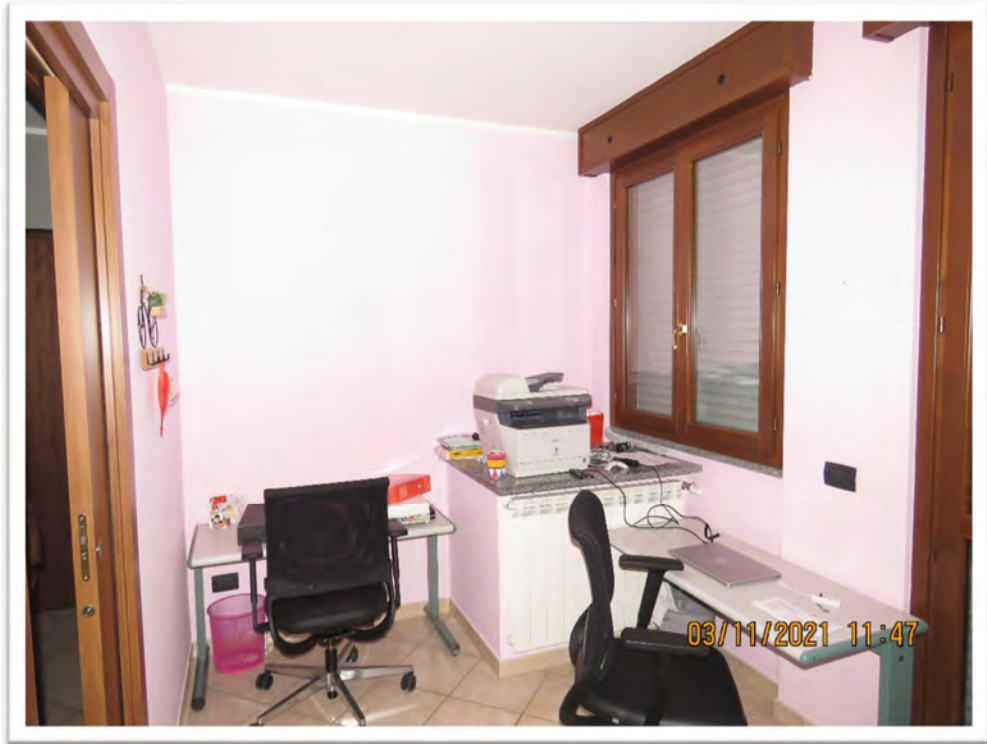
Pianerottolo al piano rialzato e vista dell'ingresso all'alloggio.



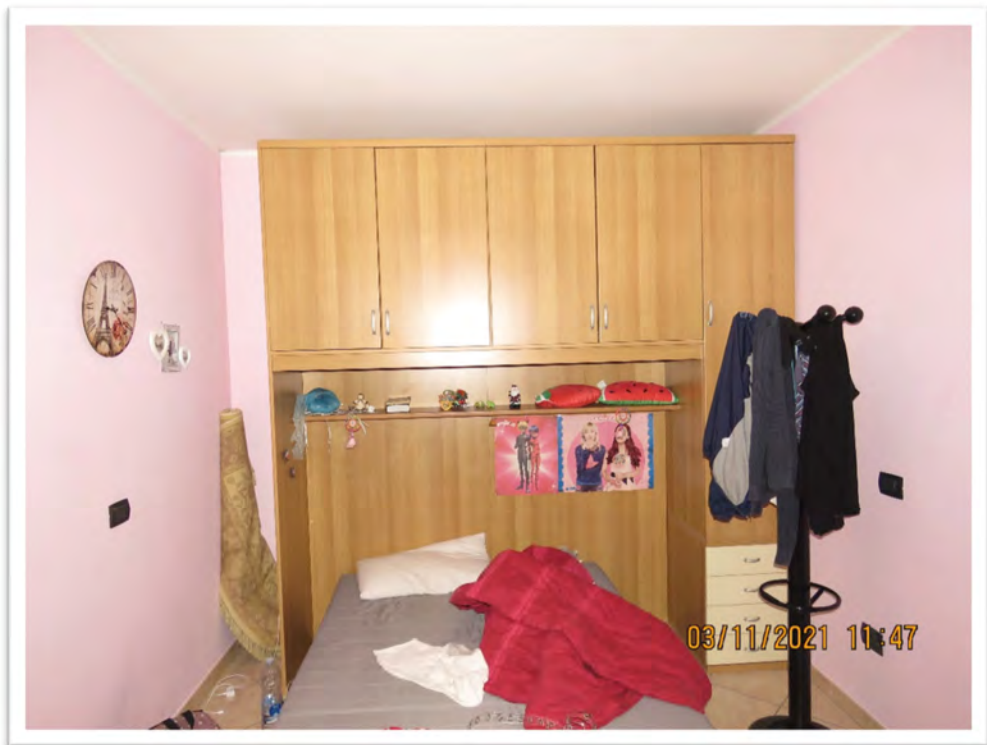


Disimpegno e scala interna di collegamento con il piano seminterrato sottostante.





Stanza.





Viste del balcone.





Il bagno.

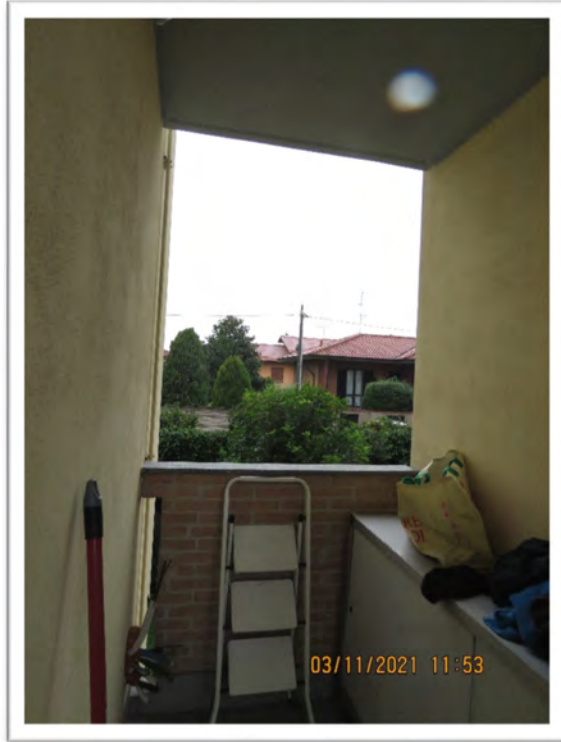




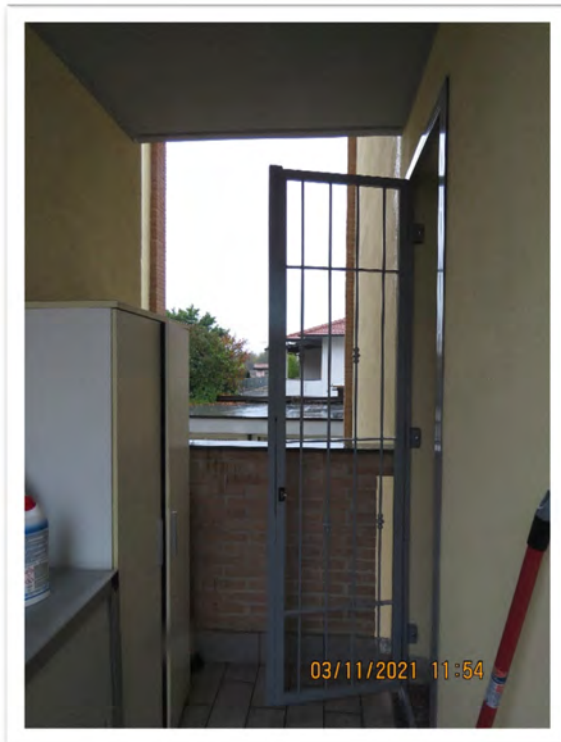


Camera.





Balcone.





Scala interna a livello del seminterrato e vano cantina impropriamente utilizzato a soggiorno.





Vano cantina impropriamente utilizzato a soggiorno.



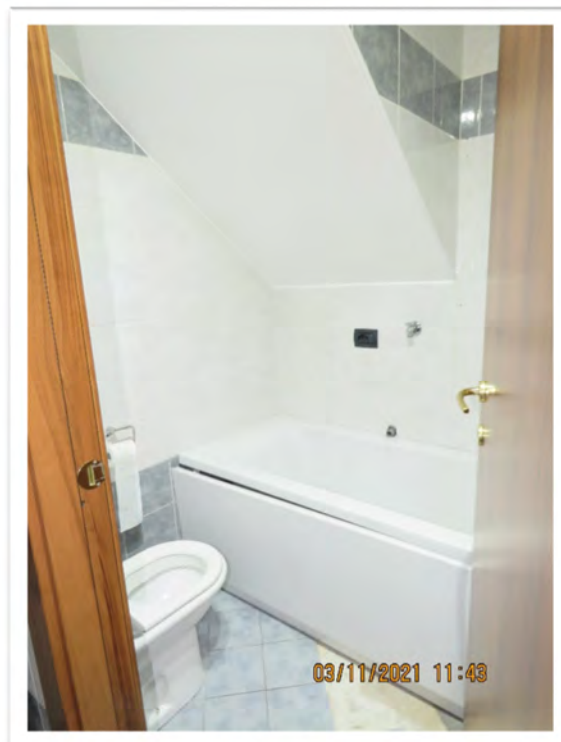


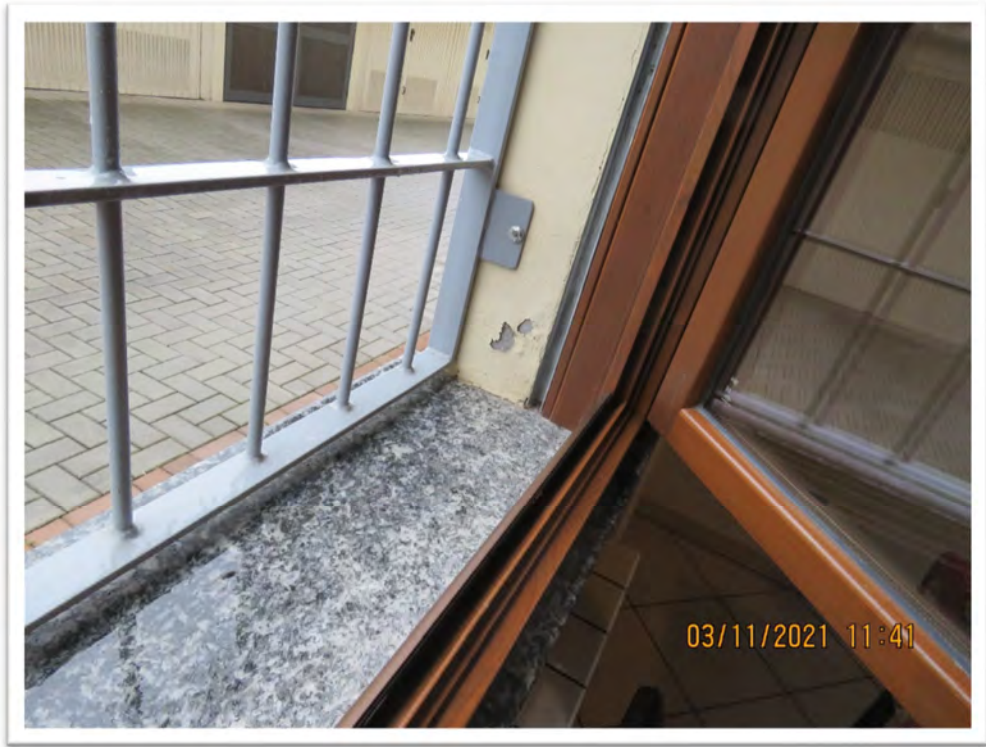
Vano cantina impropriamente utilizzato a cucina.



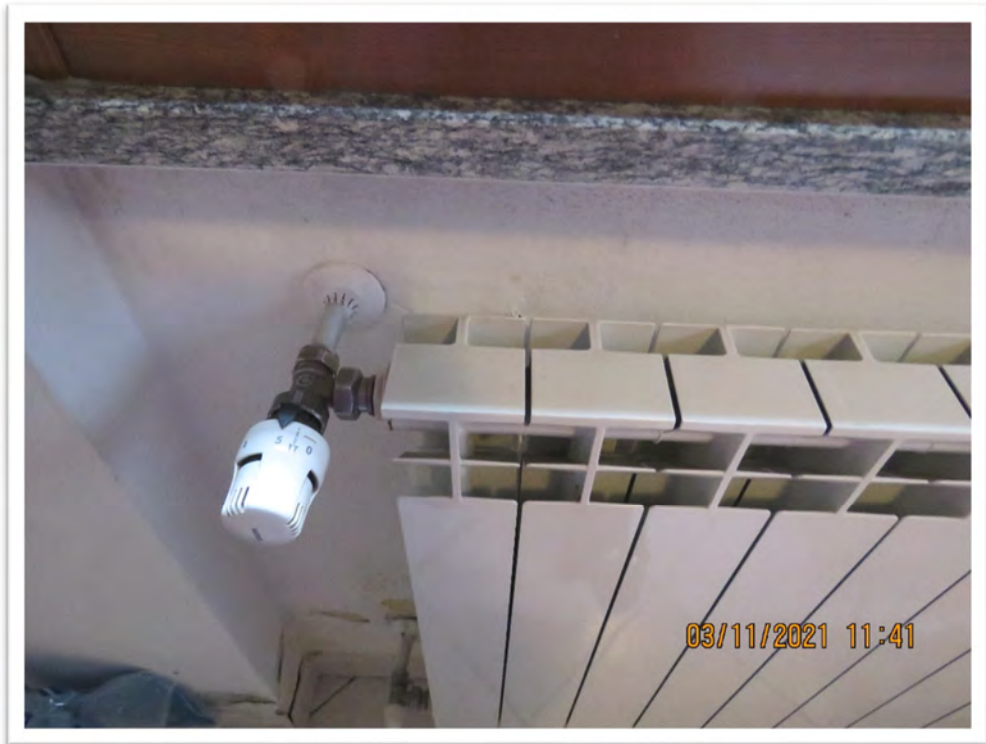


Lavanderia impropriamente utilizzata a bagno.





Particolari.





Il giardino.







Il giardino.





L'autorimessa.

