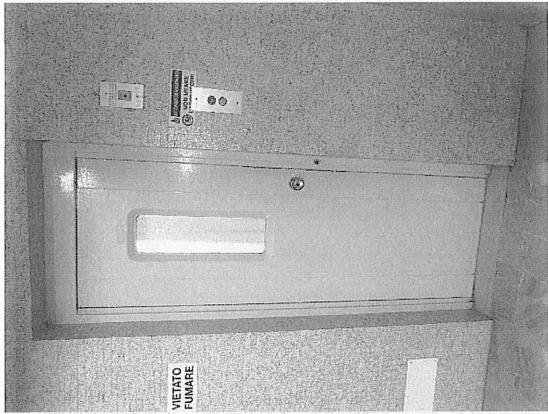
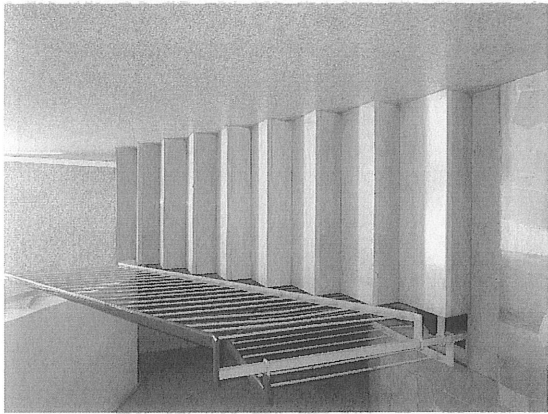


Ingresso edificio



Ascensore



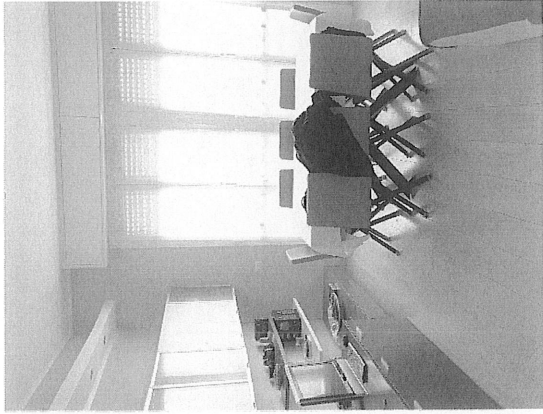
Vano scala



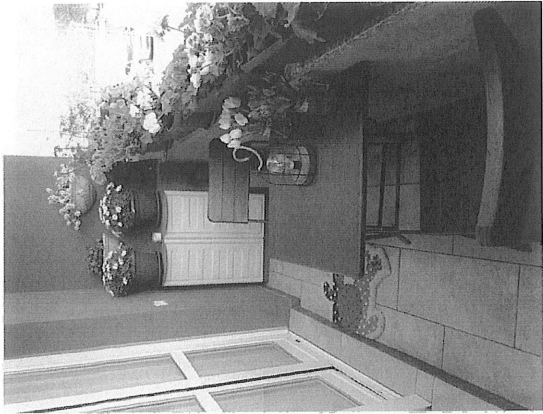
Porta appartamento



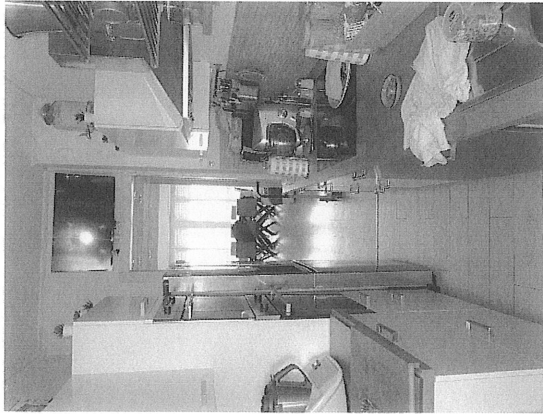
Zona ingresso



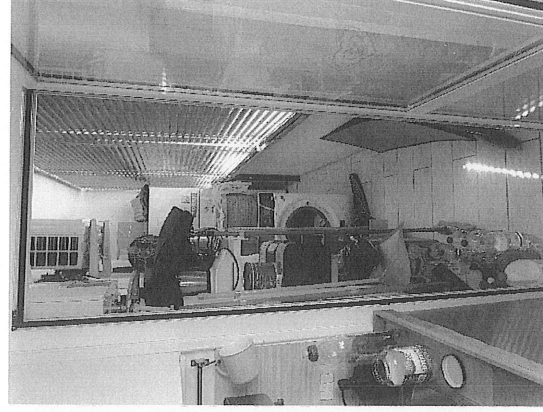
Soggiorno



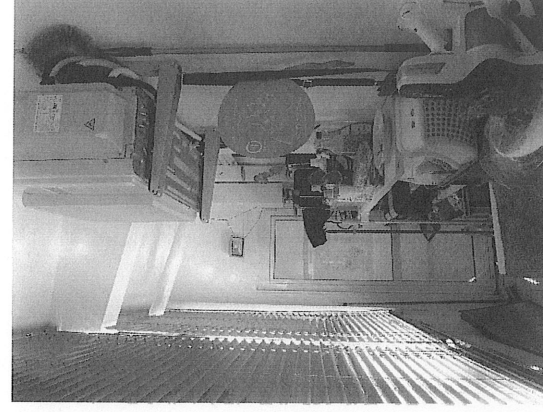
Balcone



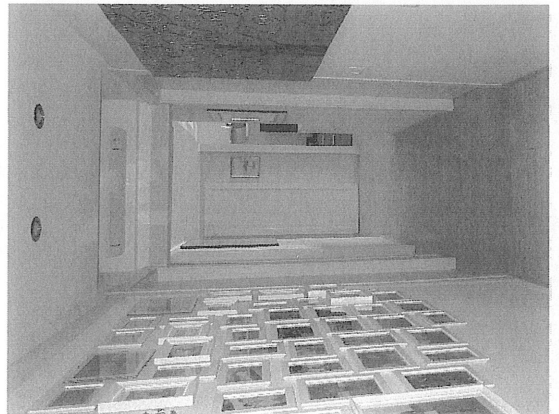
Cucina



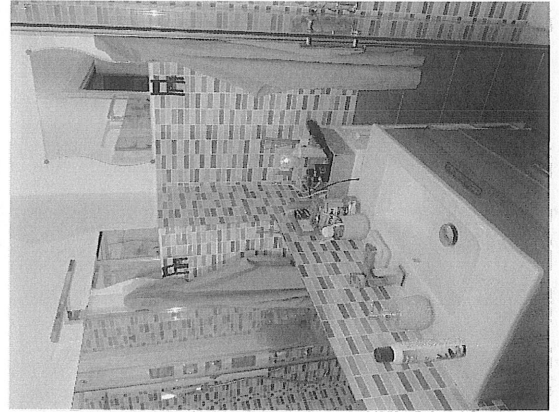
Zona uso veranda



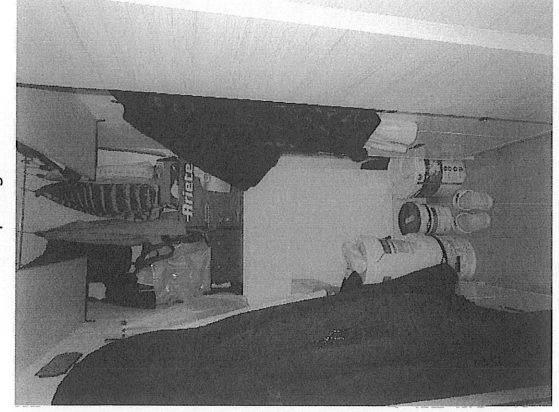
Corridoio



Primo bagno



Ripostiglio







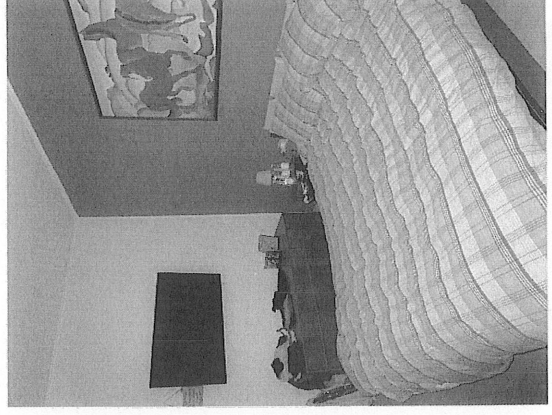
Prima camera



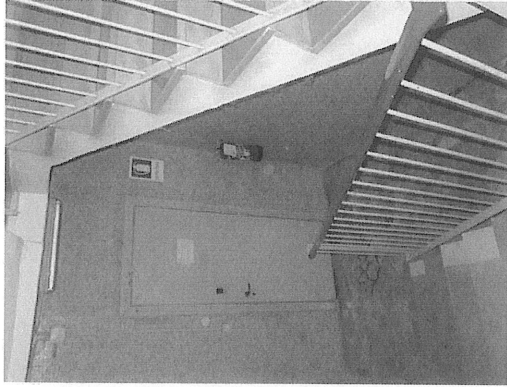
Seconda camera



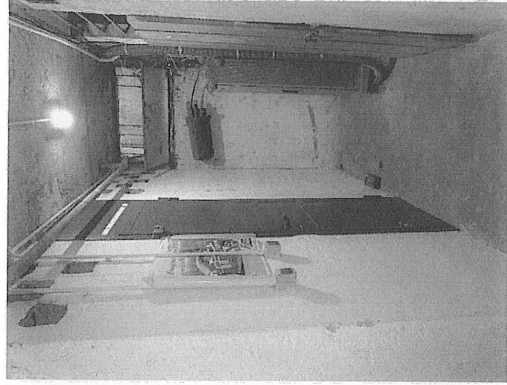
Camera matrimoniale



Secondo bagno



Accesso al piano



Corridoio



Porta

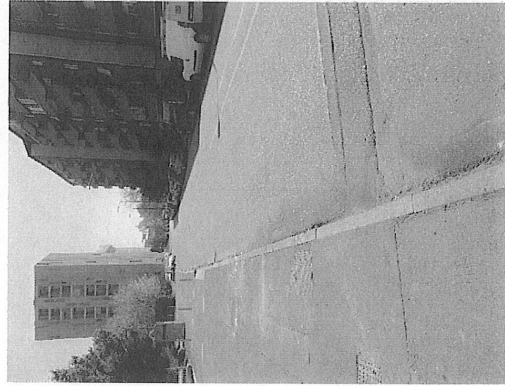


Interno

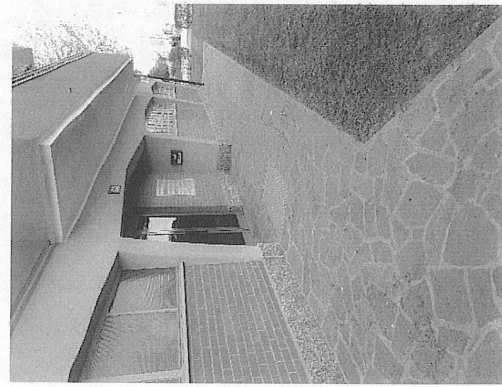
CANTINA

ESTERNI CIVICO 135 DI VIA APPENNINI A MILANO

Accesso viabilistico (riprese contrapposte)



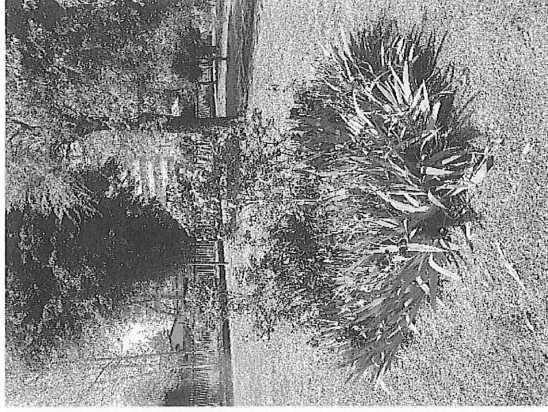
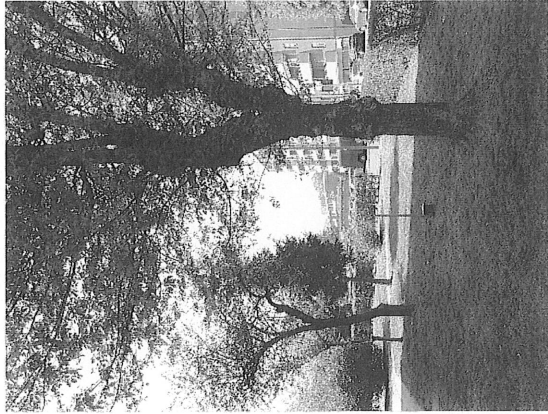
Accesso fronte strada



Corpo di fabbrica







Verde condominiale

AREE CONFINANTI O ADIACENTI AL CIVICO 135 DI VIA APPENNINI A MILANO

Verde pubblico attrezzato

