

TRIBUNALE DI MILANO

Sez. III Civile – G.E. Dott.ssa Mennuni – Procedura esecutiva immobiliare

R.G.E. 332/2020

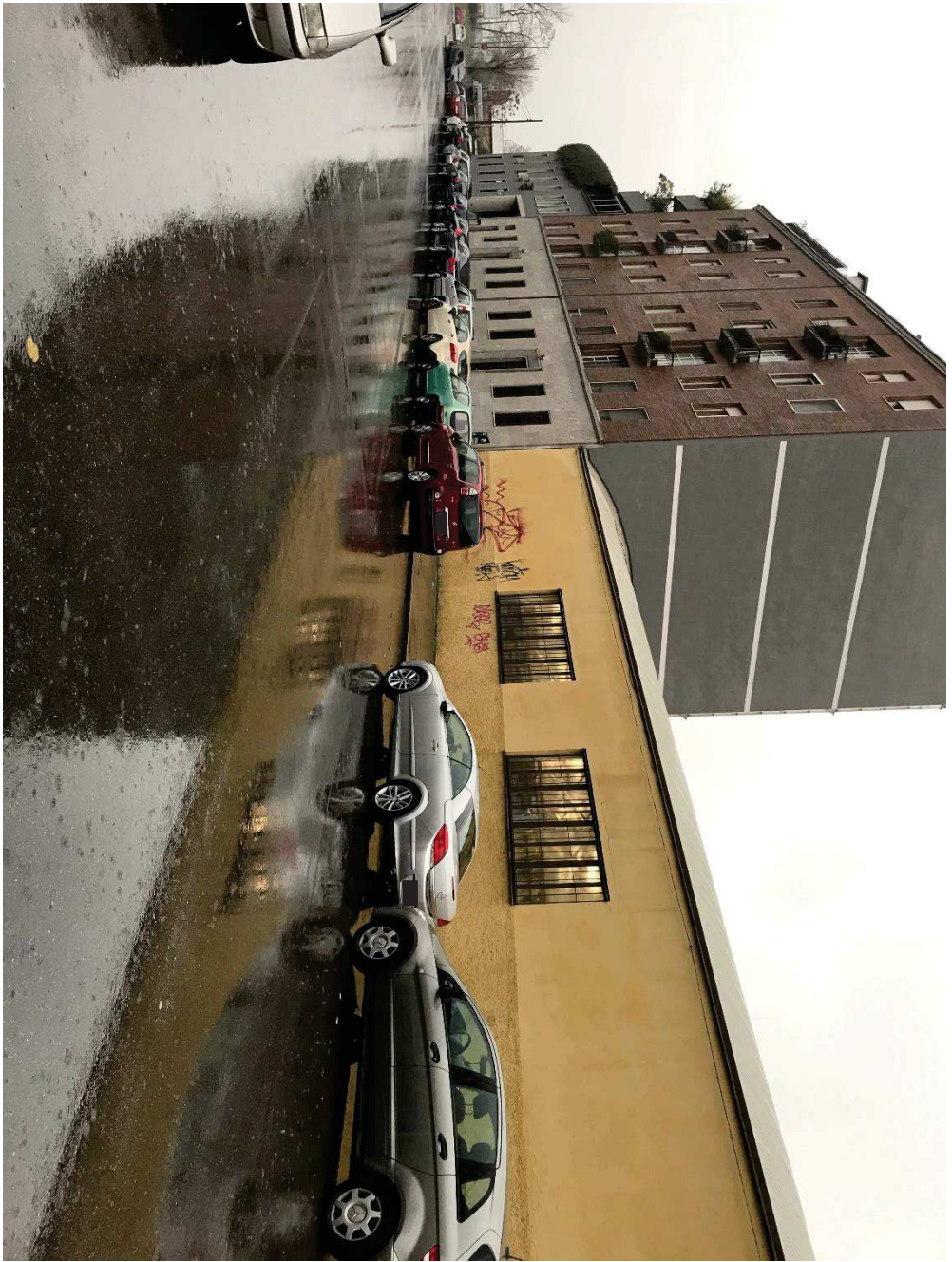
ALLEGATO 1 - DOCUMENTAZIONE FOTOGRAFICA

Via Tertulliano 70 – Milano



Vista aerea





Complesso di Via Tertulliano





Ingresso al complesso





Fronte laterale



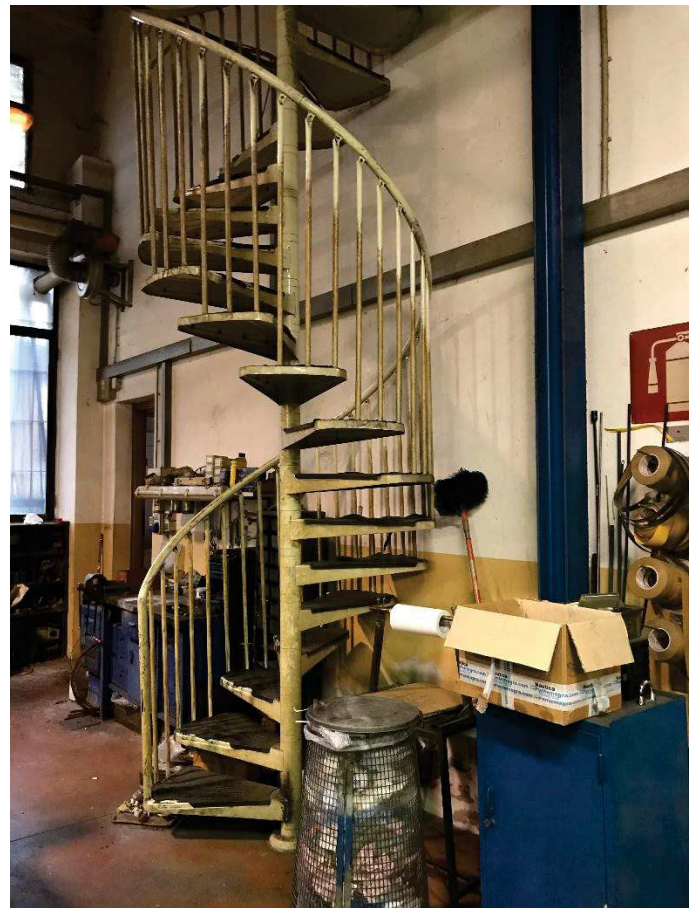


Vista laboratorio esterno ed interno





Soppalco

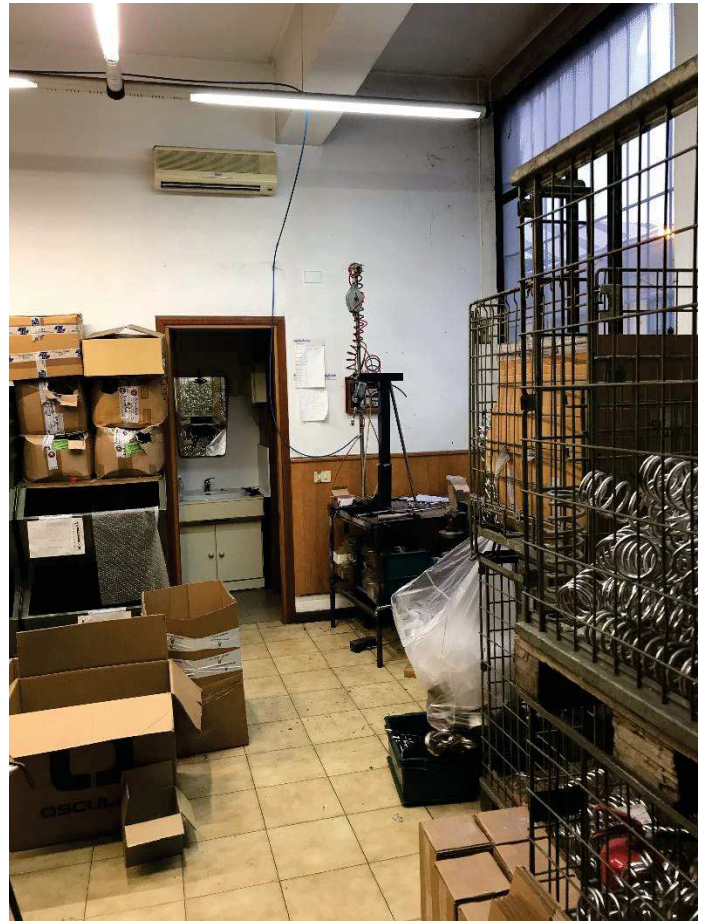


Scala a chiocciola





Ingresso agli uffici dal laboratorio



Ufficio P.T. con vista bagno

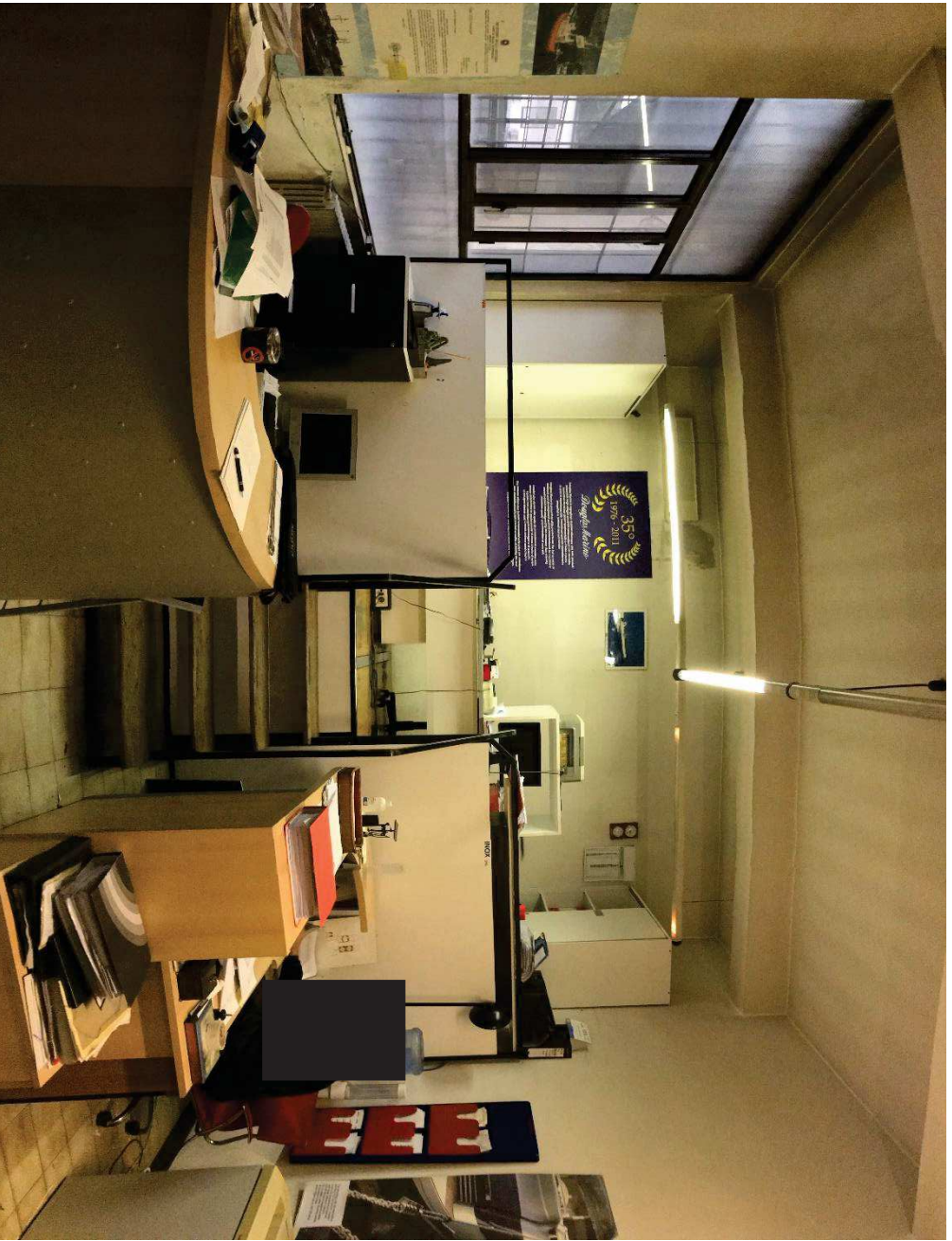


Bagno



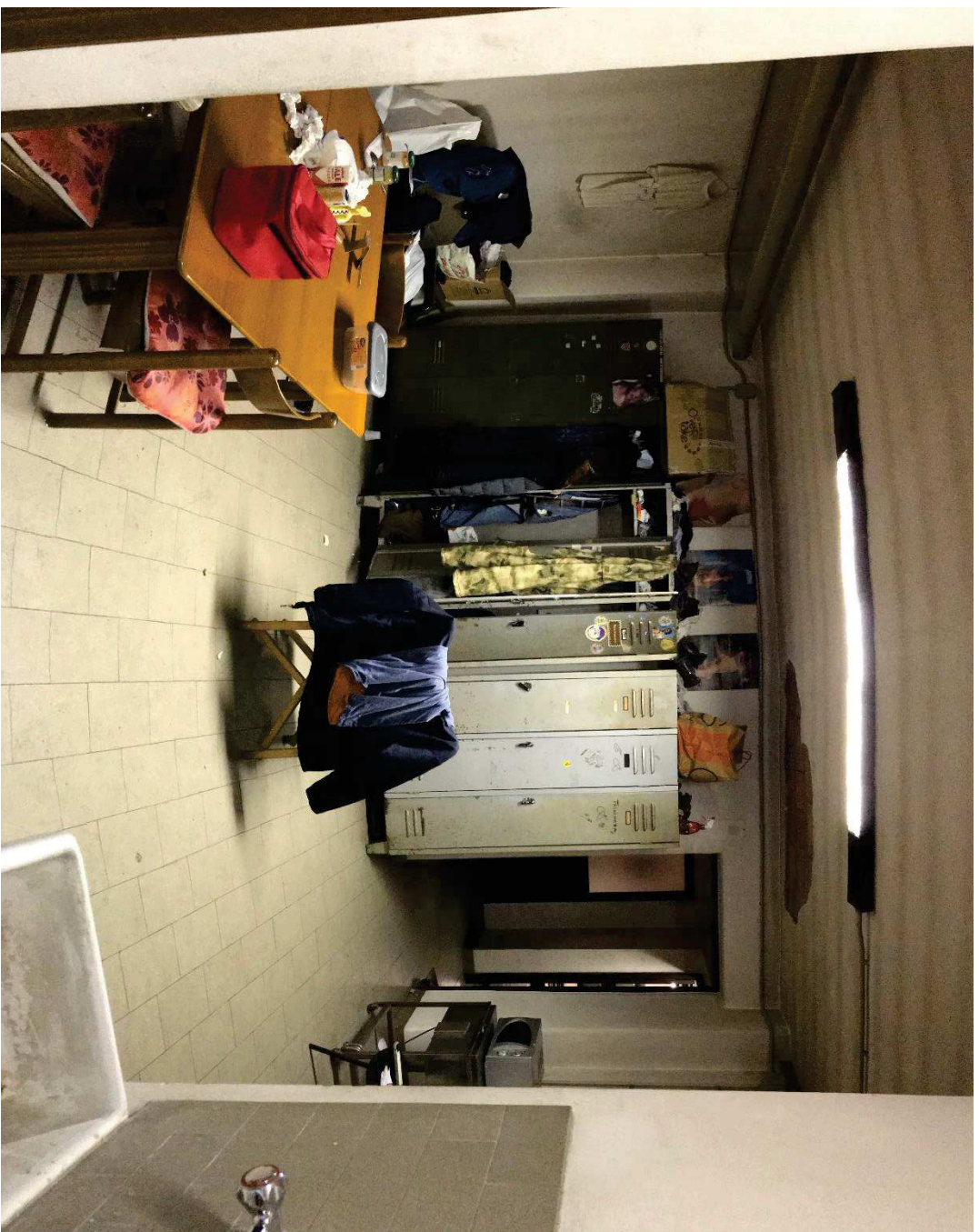
Ufficio P.T.





Ufficio P. Terra





Locale spogliatoio P. Primo

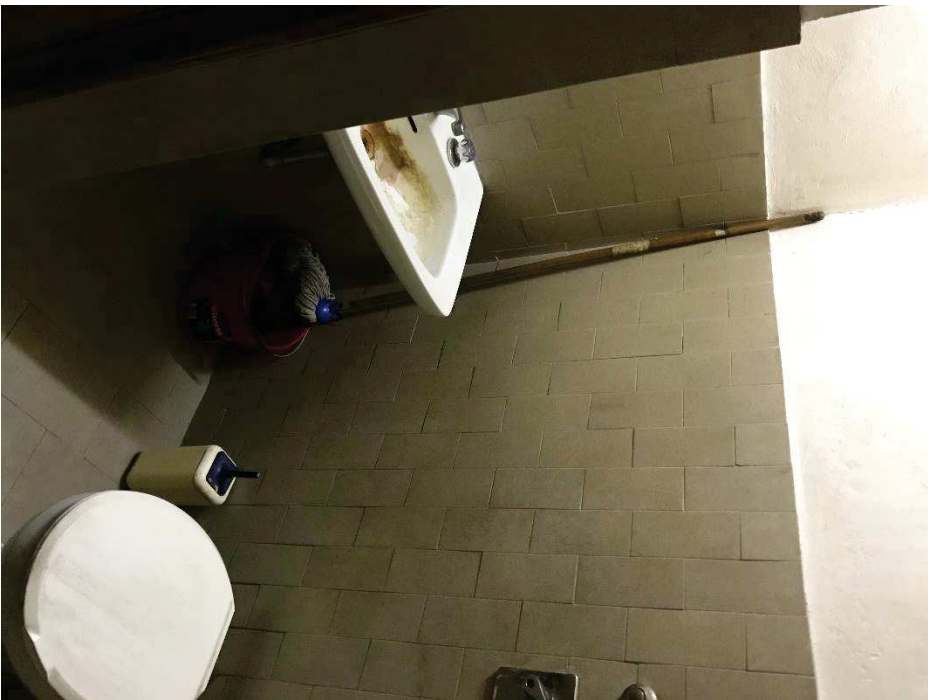
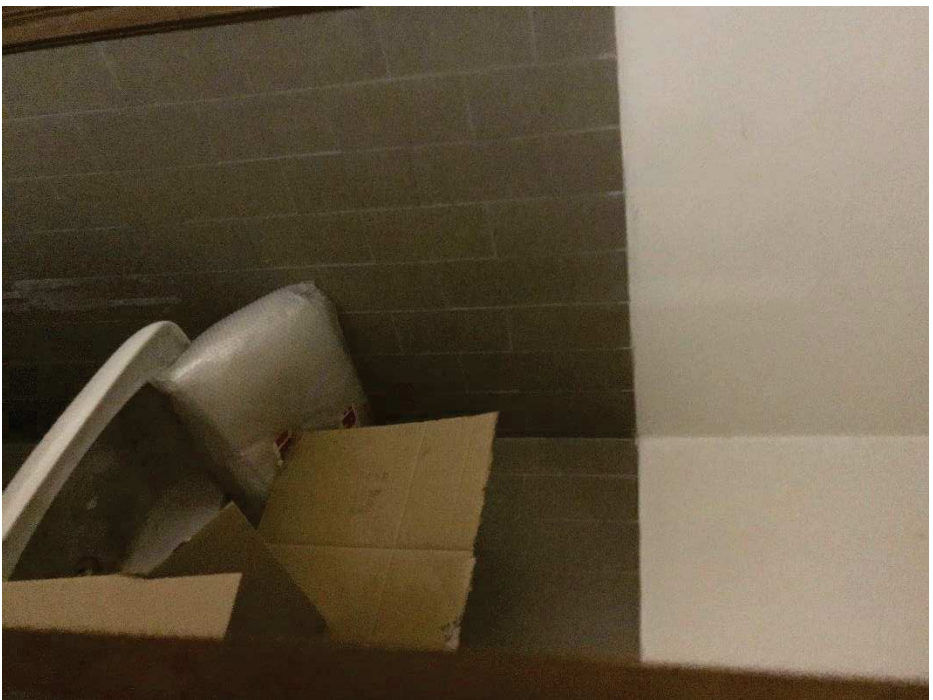


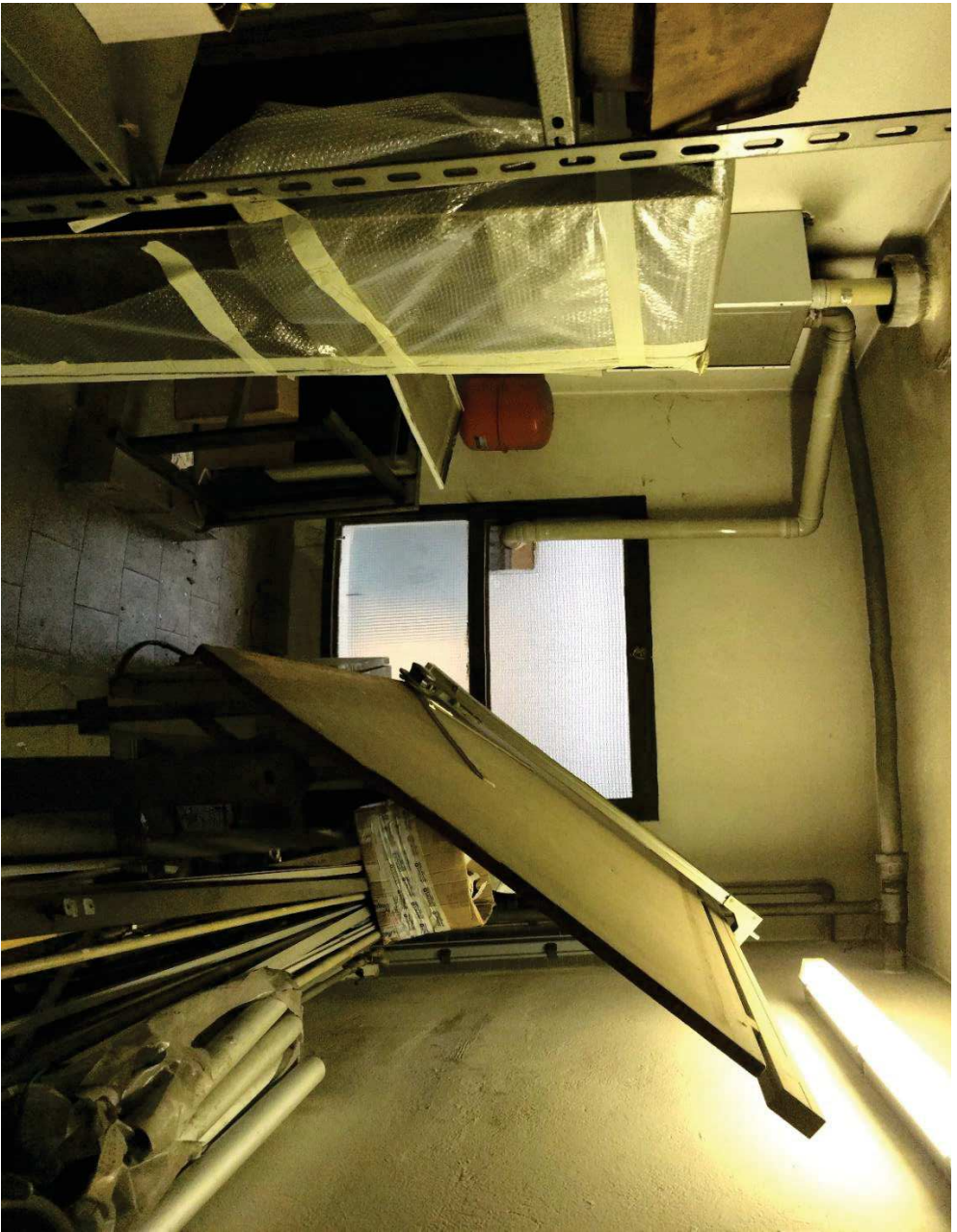


Bagno 1 – P. Primo



Bagno 2 – P. Primo





Locale caldaia P. Primo



Locale archivio P. Primo

