



Handwritten graffiti in yellow on the wall.

Handwritten graffiti in black on the wall, including the word 'Flaco' and a circled 'X'.













100

Comune di Milano  
Cassa postale  
10110



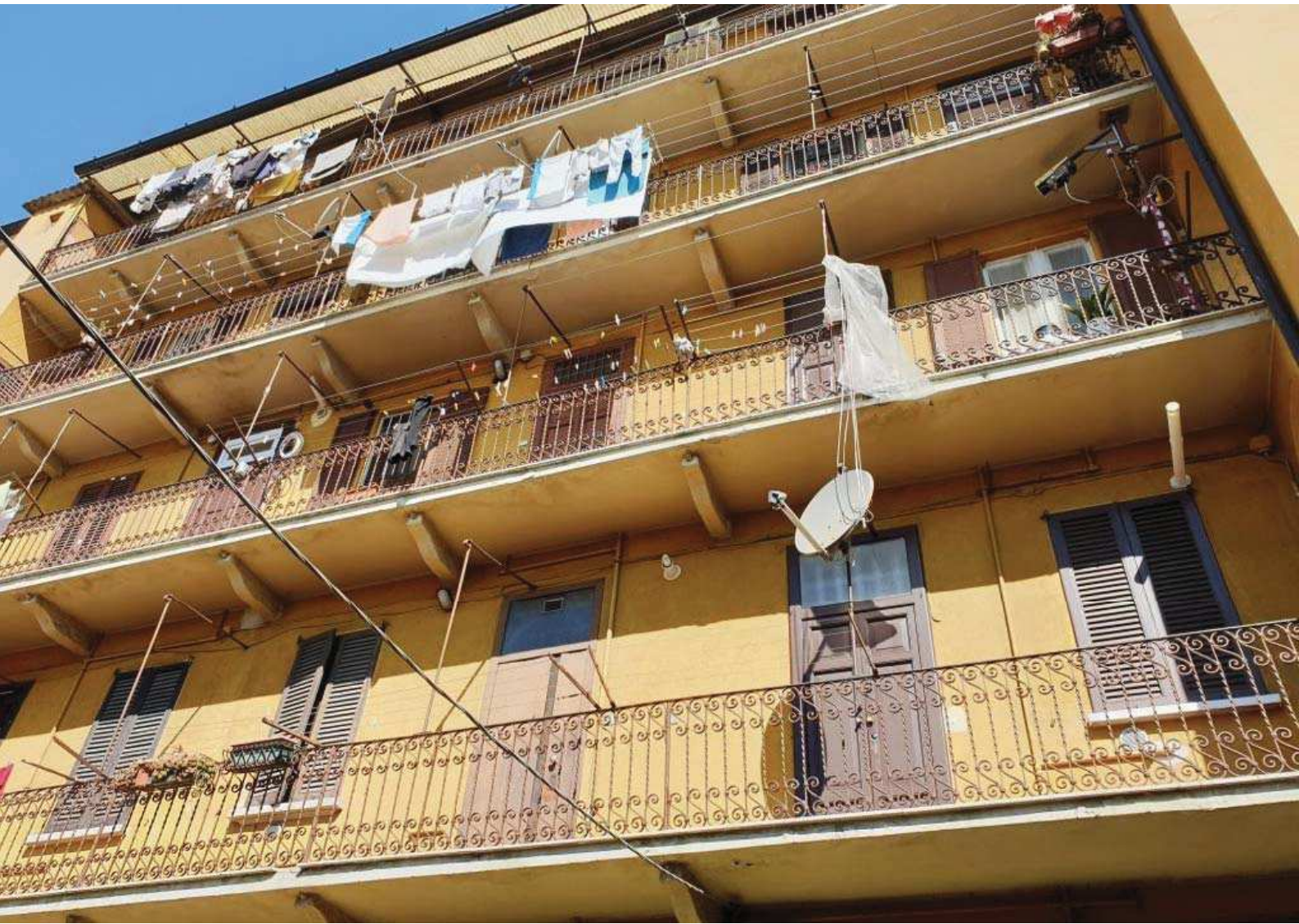












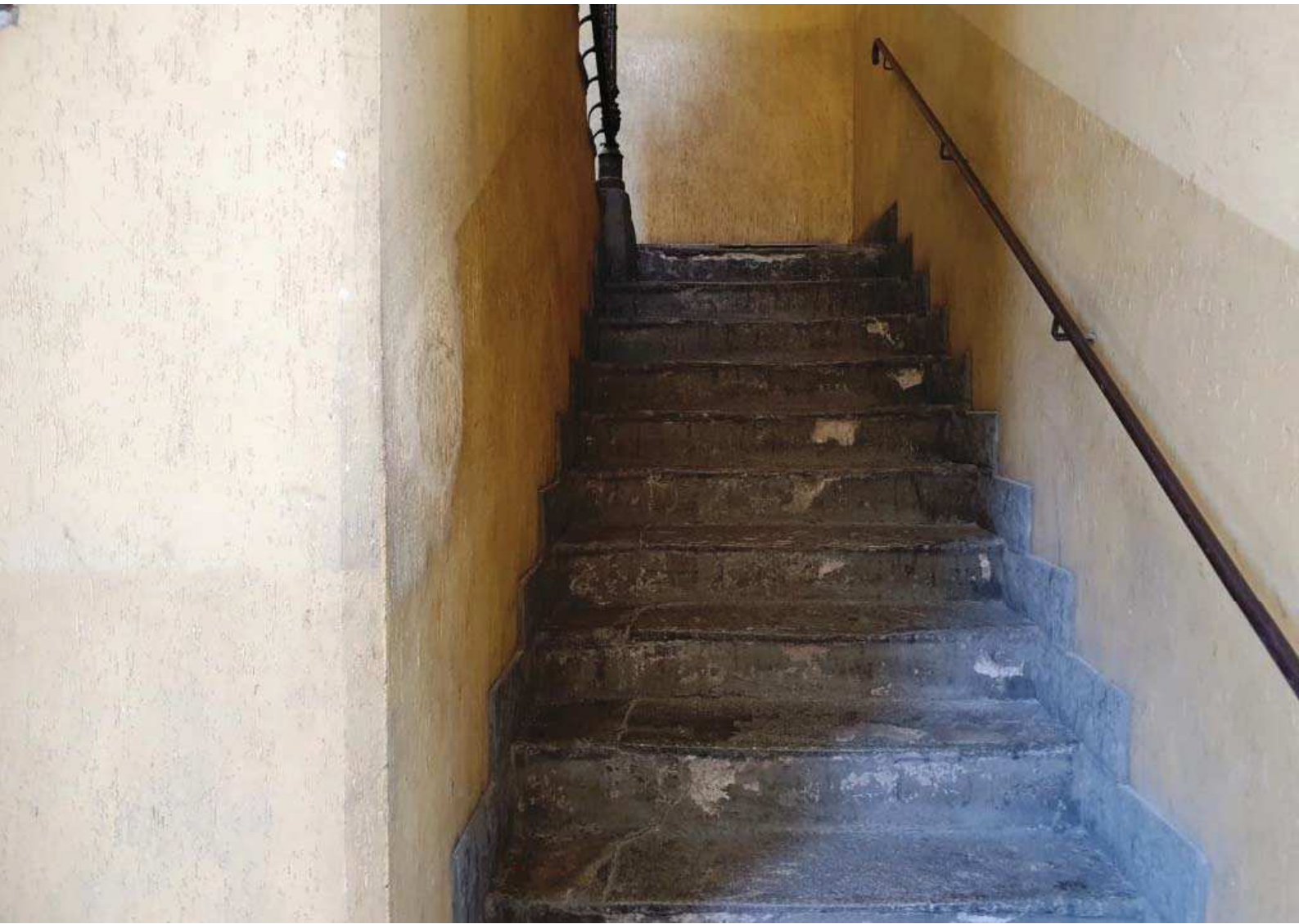




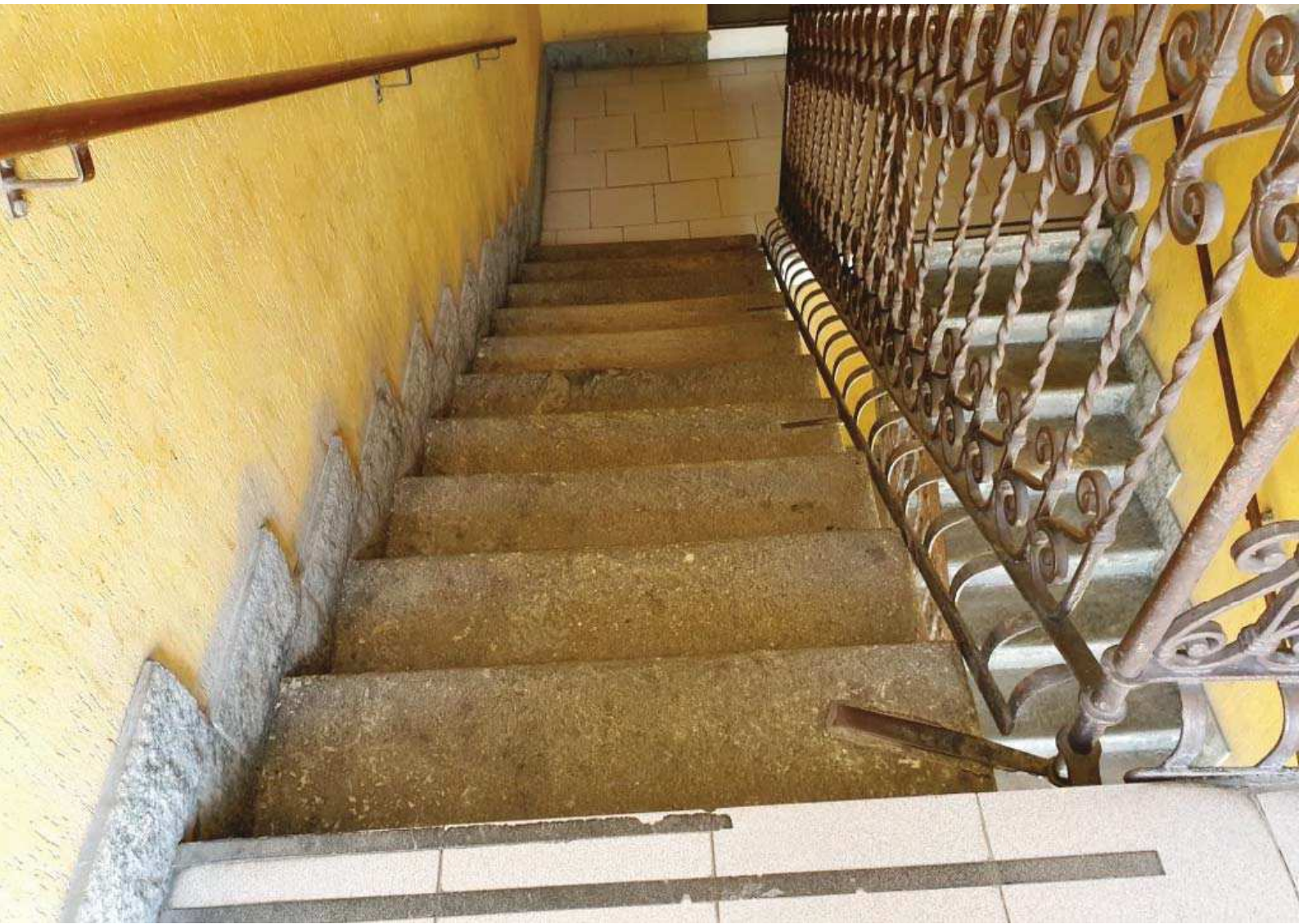








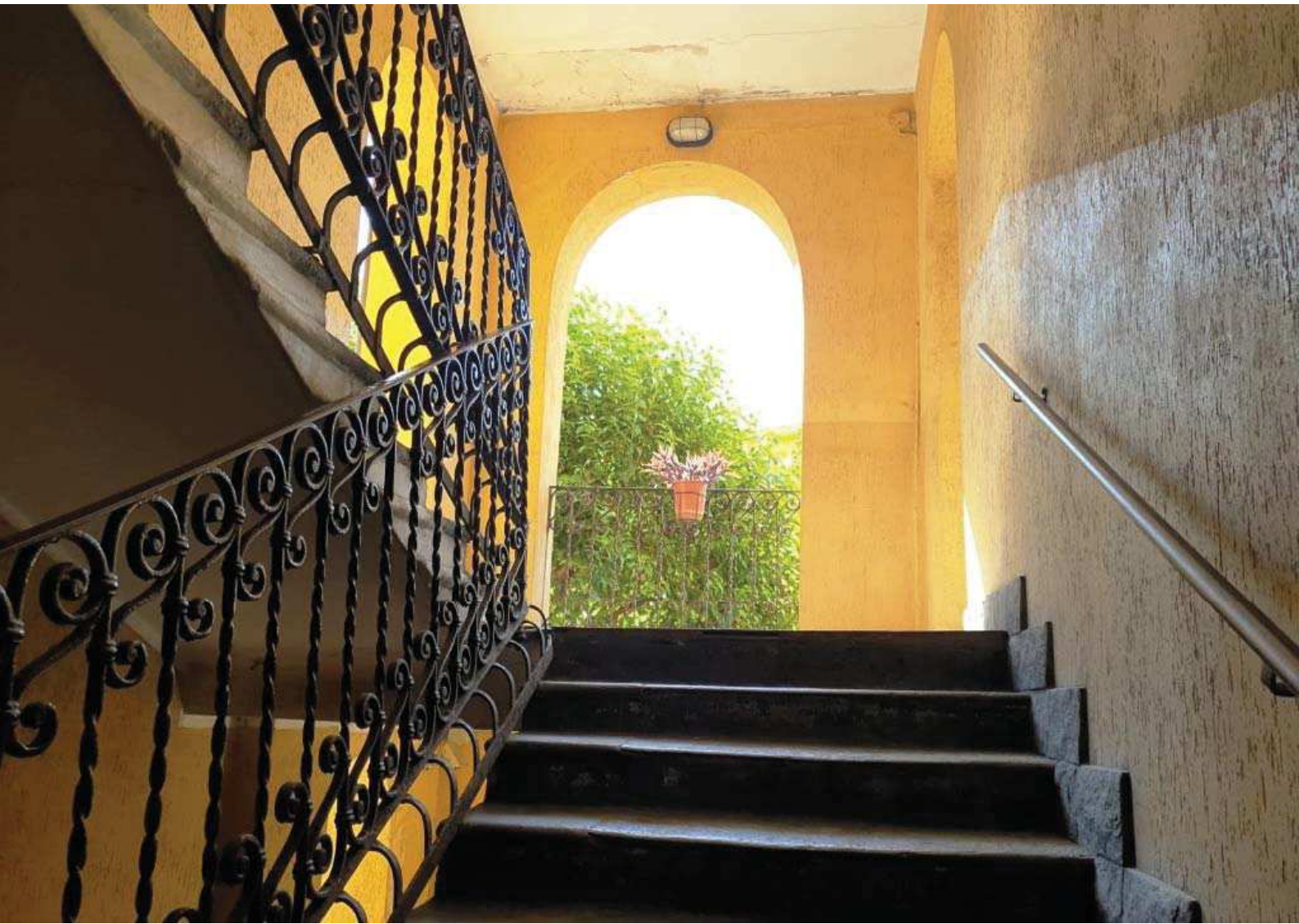




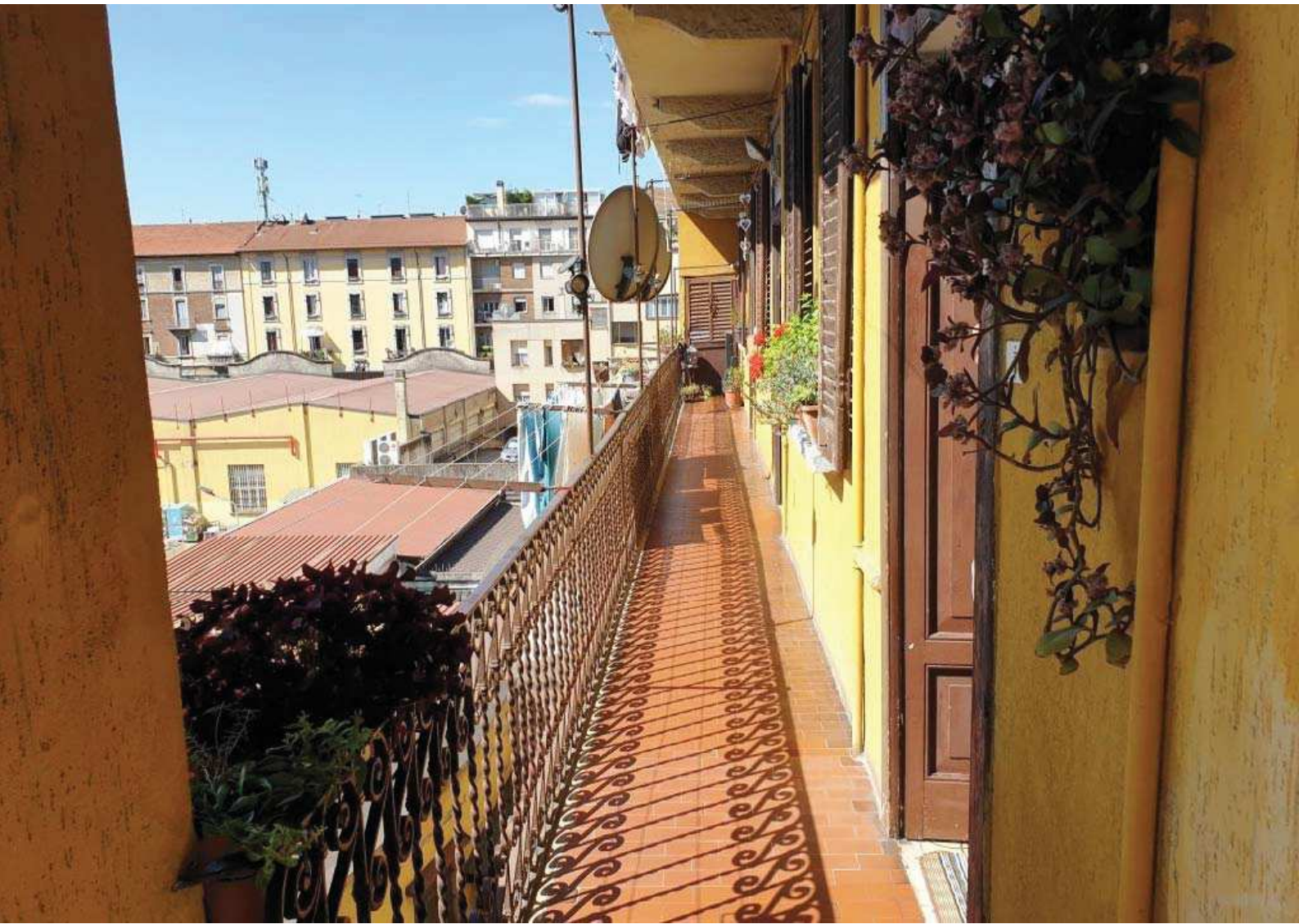




































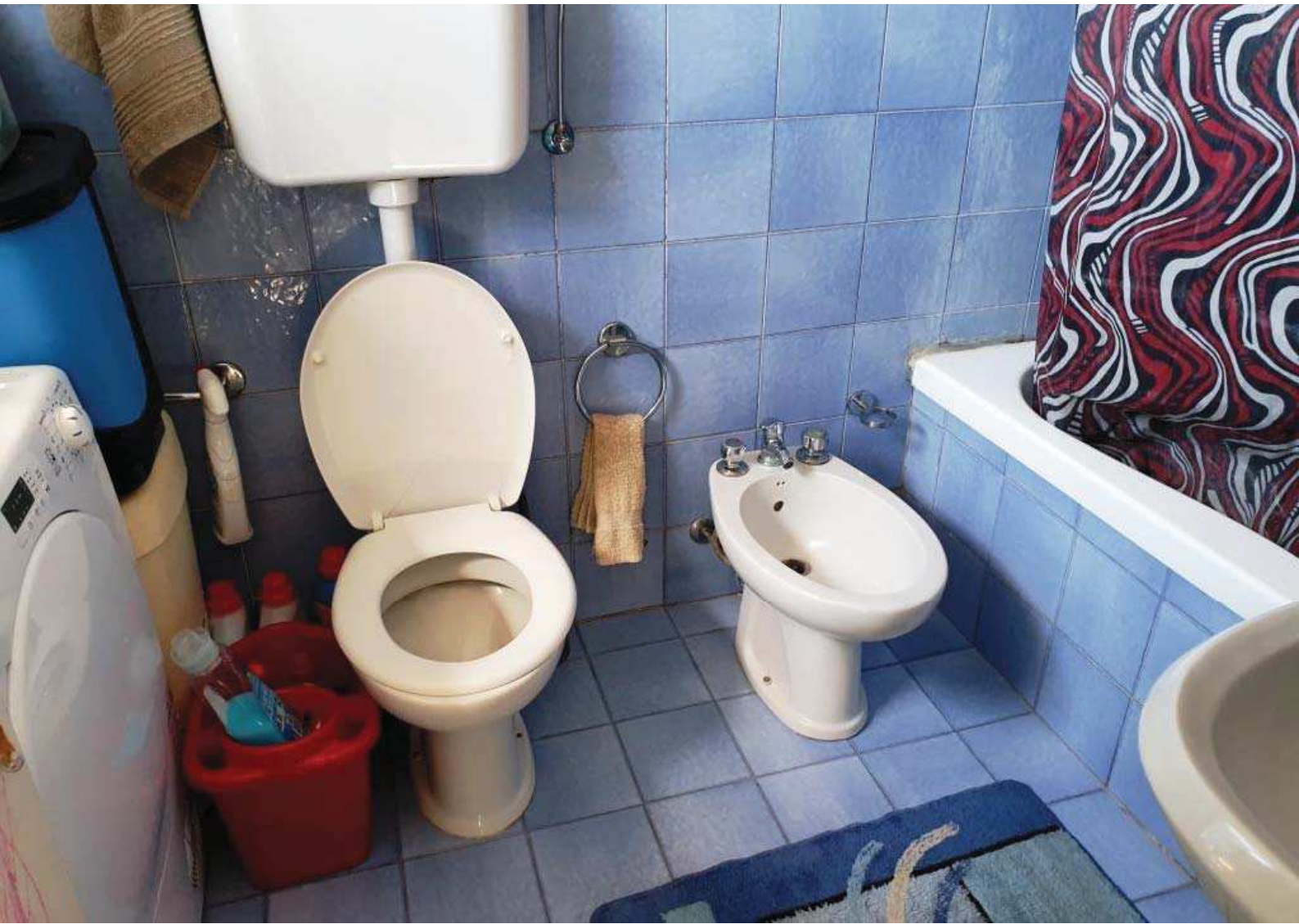








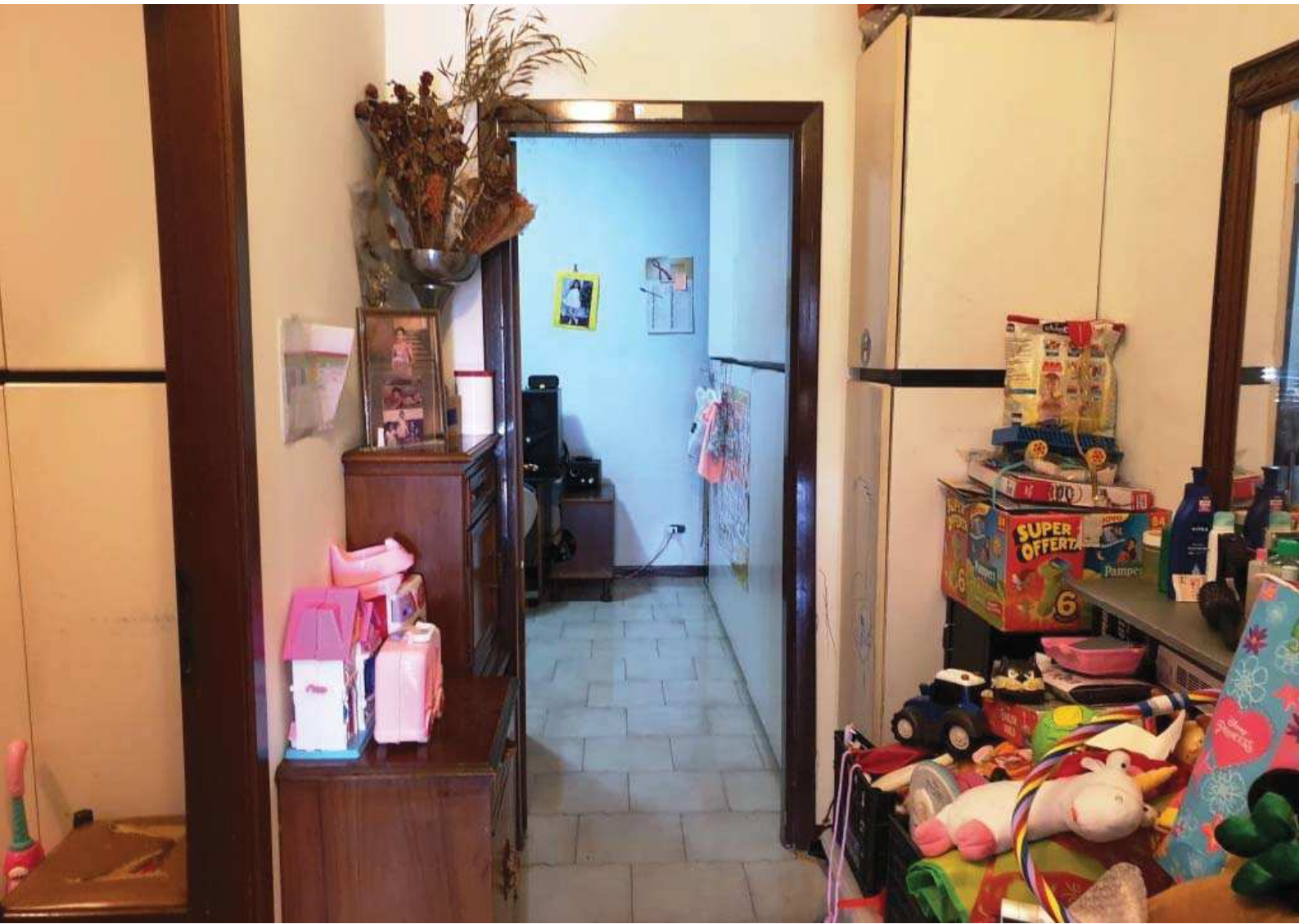




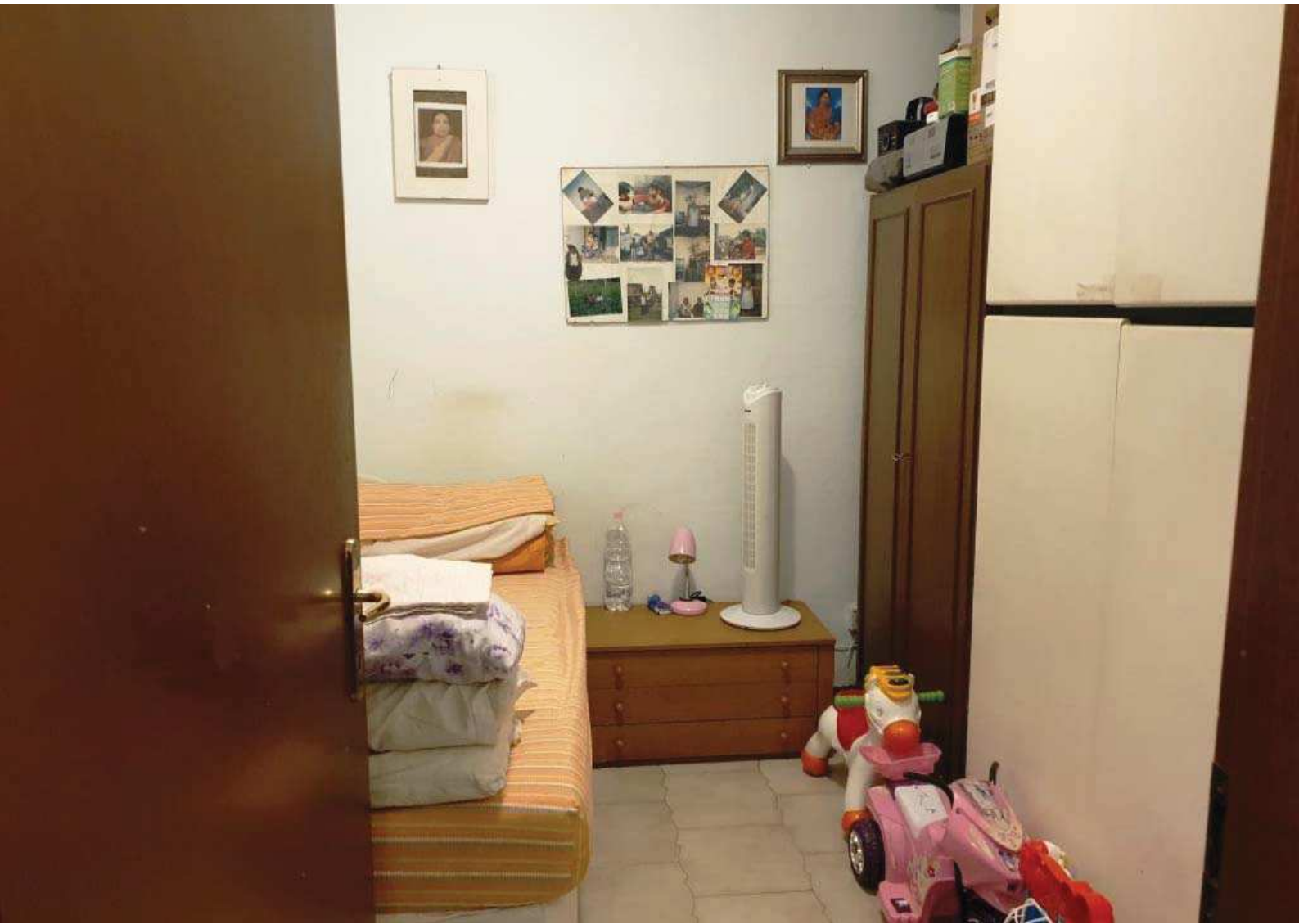












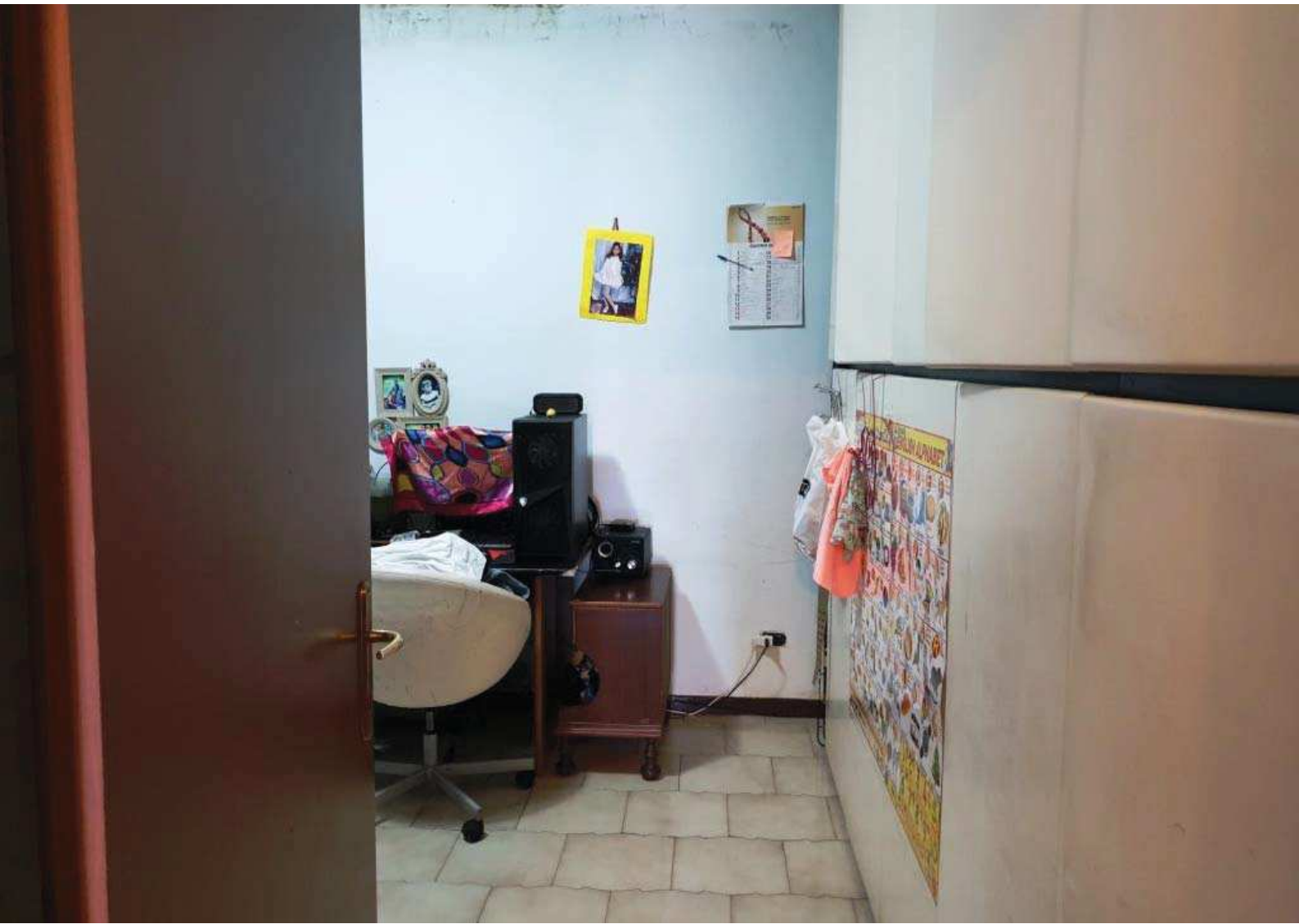




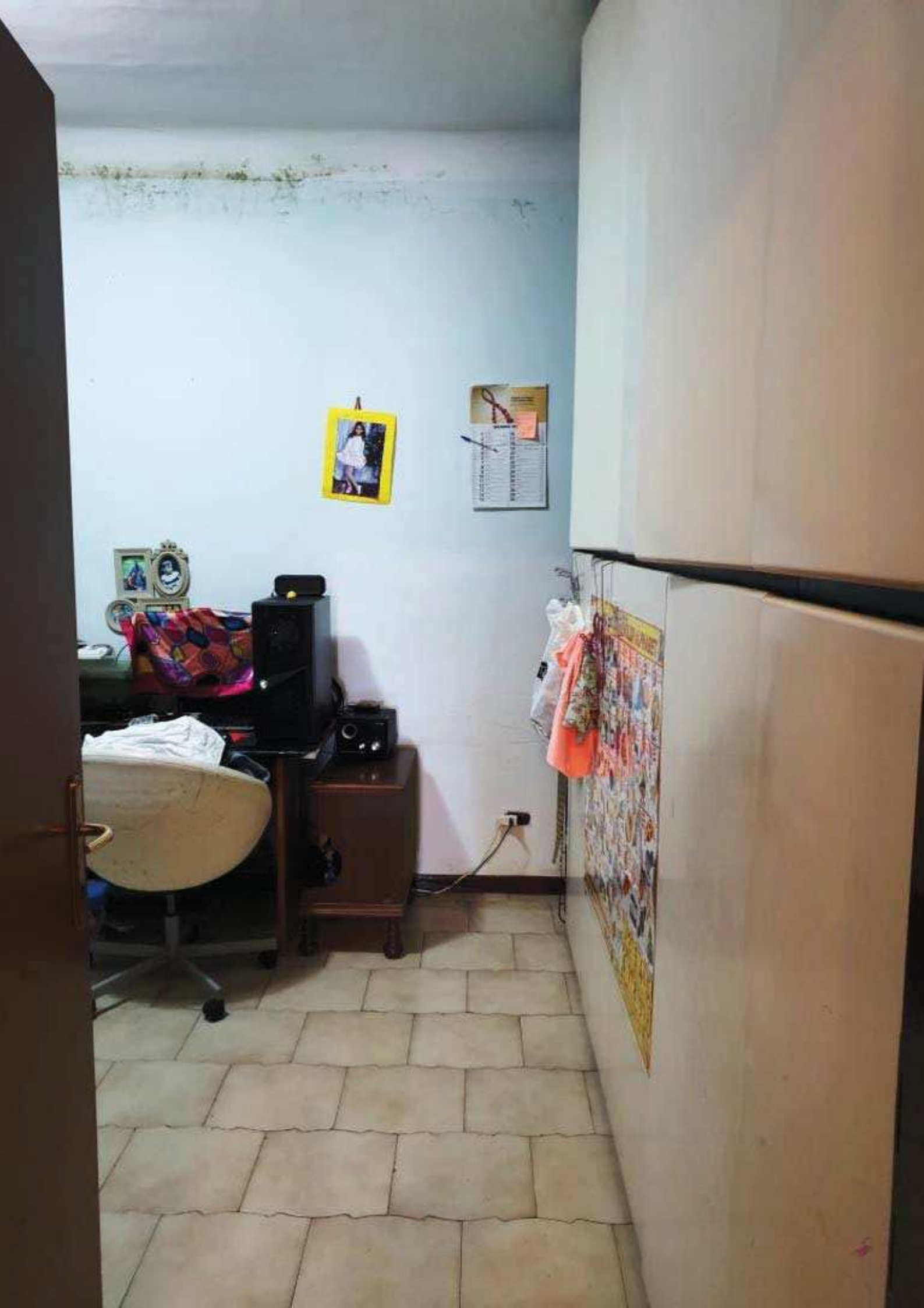




















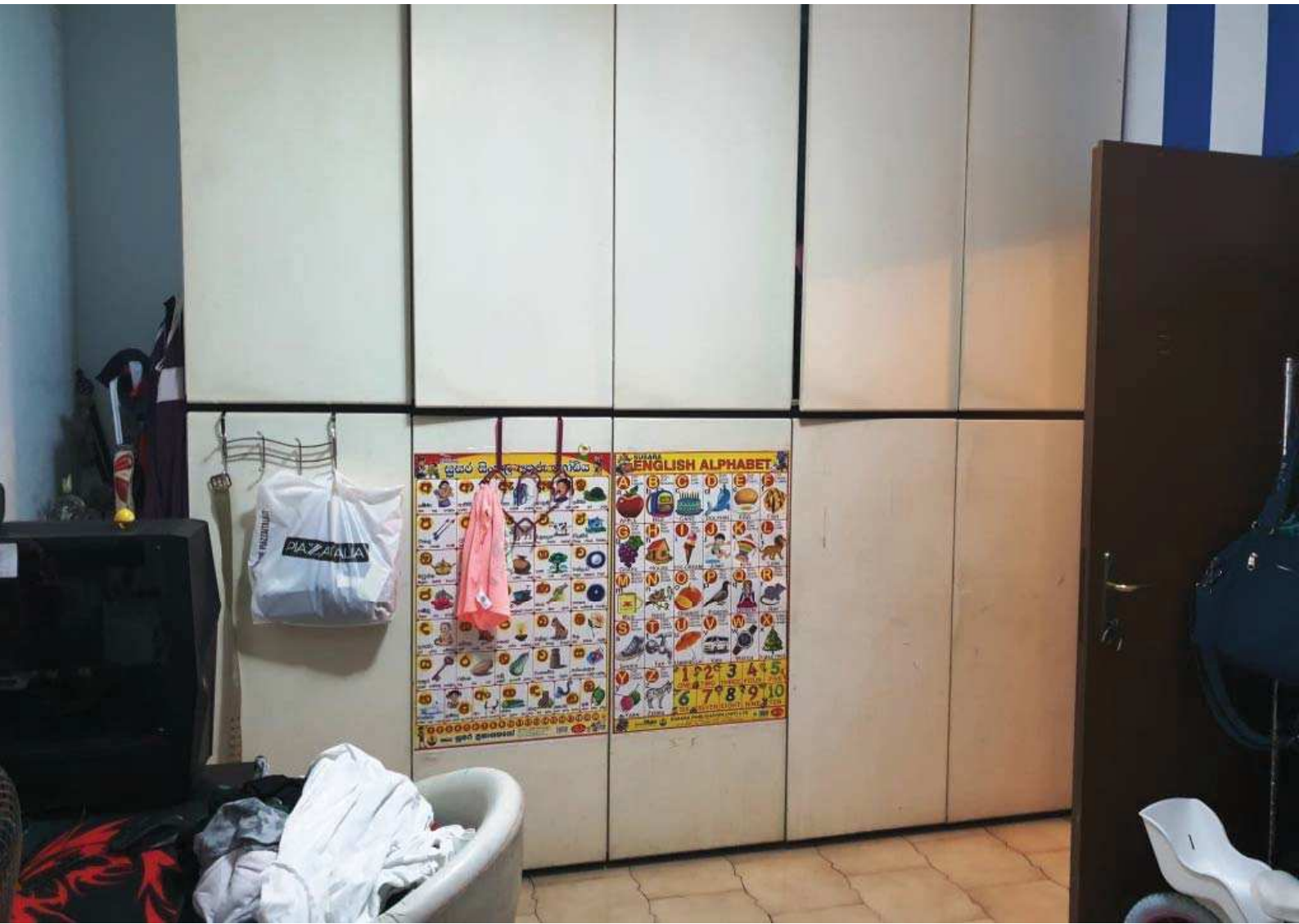
















A white Bosch water heater is mounted on a wall. It has a control panel at the bottom with a digital display and three knobs. A corrugated vent pipe extends from the top of the unit. A yellow and black warning label is affixed to the front of the water heater.

The control panel of the water heater features a small digital display on the left, followed by three circular knobs for temperature and flow control, and a blue indicator light on the right.

A round, light-colored plate sits on top of the refrigerator, containing several lemons. A wooden cutting board is also visible on the counter to the left of the plate.

A white Bosch refrigerator is positioned below the water heater. The front of the refrigerator is decorated with several colorful magnets, including a large one with a picture of a person. The Bosch logo is visible on the top edge of the refrigerator door.



























