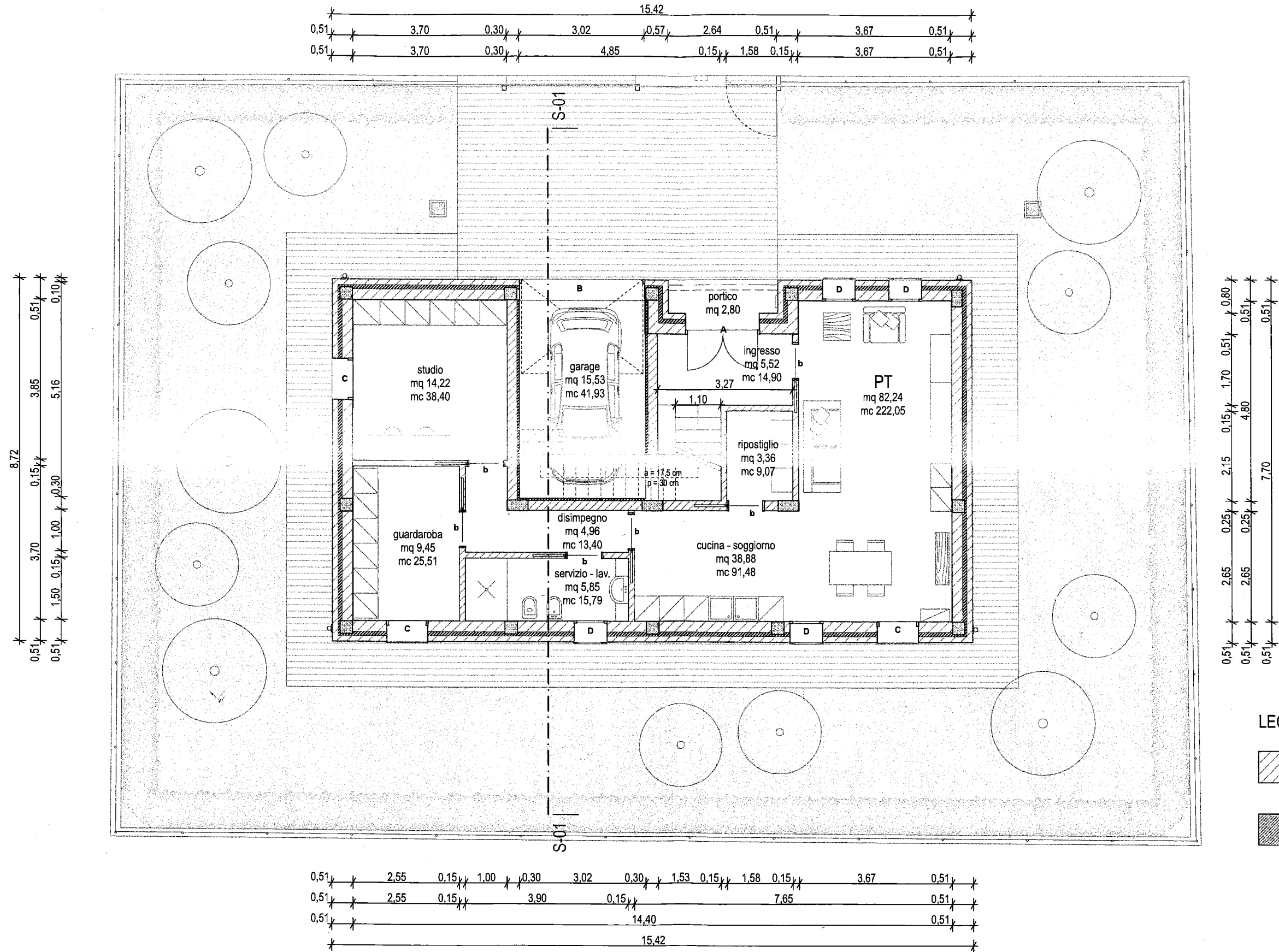
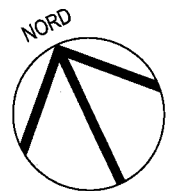


P.TERRA - ambiente	superficie	sup. vetrata minima (1/8)	sup. vetrata di progetto
cucina - soggiorno	mq. 38,88	mq. 4,86	C+3D = mq. 5,42
bagno	mq. 5,85	mq. 0,73	D = mq. 1,04
studio	mq. 14,22	mq. 1,77	C = mq. 2,30

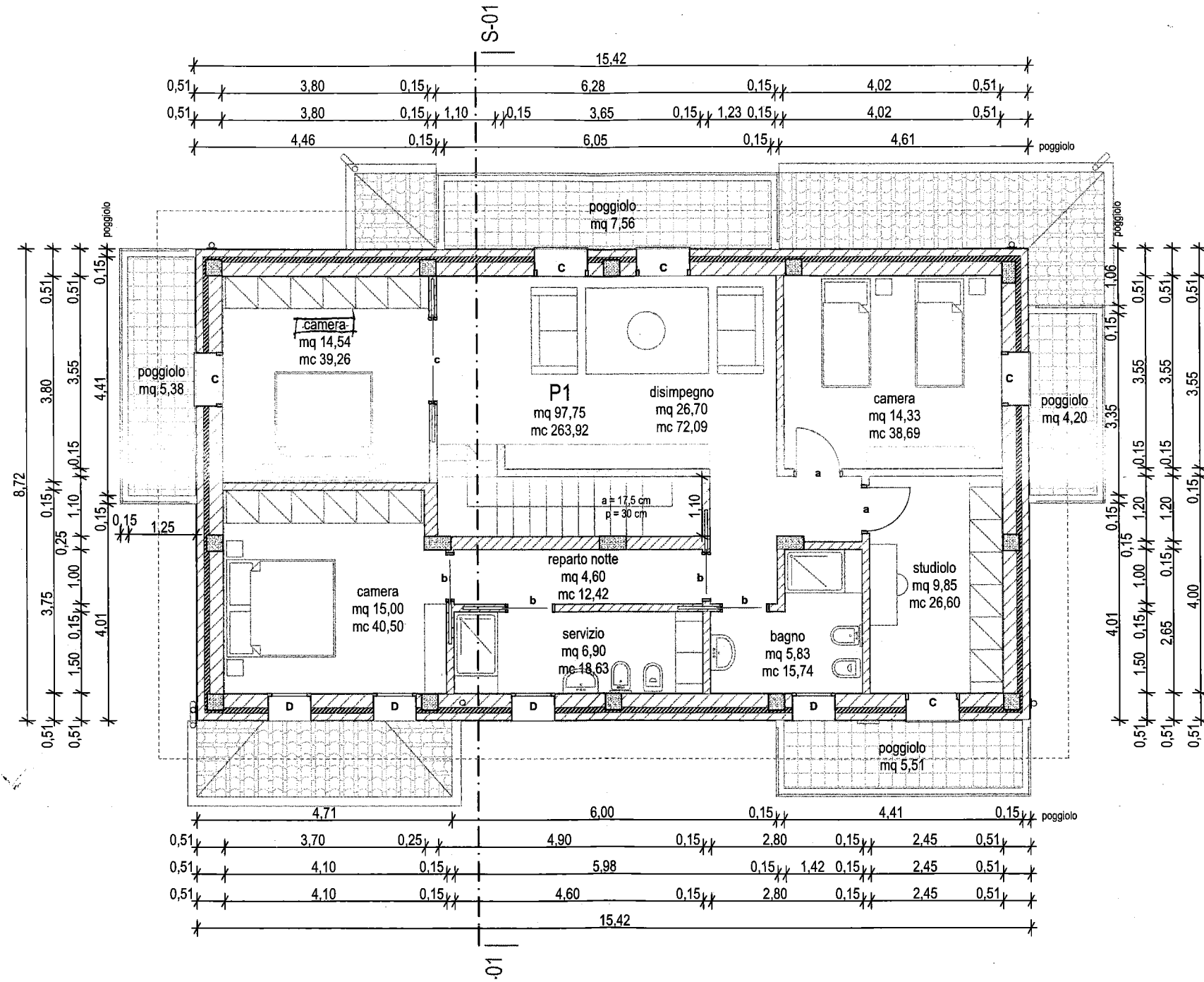


PIANTA PIANO TERRA

SCALA 1:100



P.PRIMO - ambiente	superficie	sup. vetrata minima (1/8)	sup. vetrata di progetto
disimpegno	mq. 26,70	mq. 3,33	C+C = mq. 4,60
camera	mq. 14,54	mq. 1,81	C = mq. 2,30
camera	mq. 15,00	mq. 1,87	D+D = mq. 2,08
camera	mq. 14,33	mq. 1,79	C = mq. 2,30
bagno	mq. 5,83	mq. 0,72	D = mq. 1,04
servizio	mq. 6,90	mq. 0,86	D = mq. 1,04
studiolo	mq. 9,85	mq. 1,23	C = mq. 2,30



PIANTA PIANO PRIMO