

all. 9

**Fotografie esterne ed interne del bene,
nonché la relativa planimetria**

Foto aerea - ubicazione dell'immobile

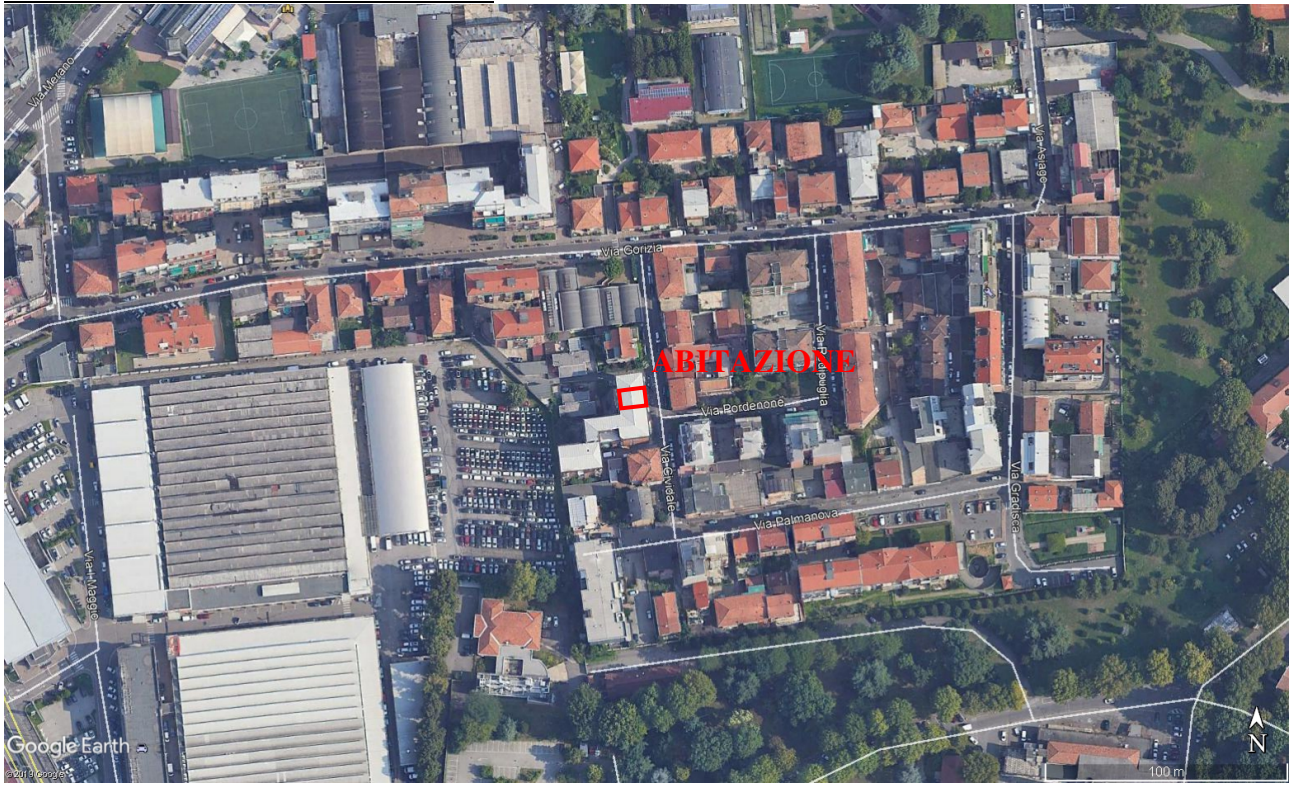


Foto esterne



foto da vicolo Cividale

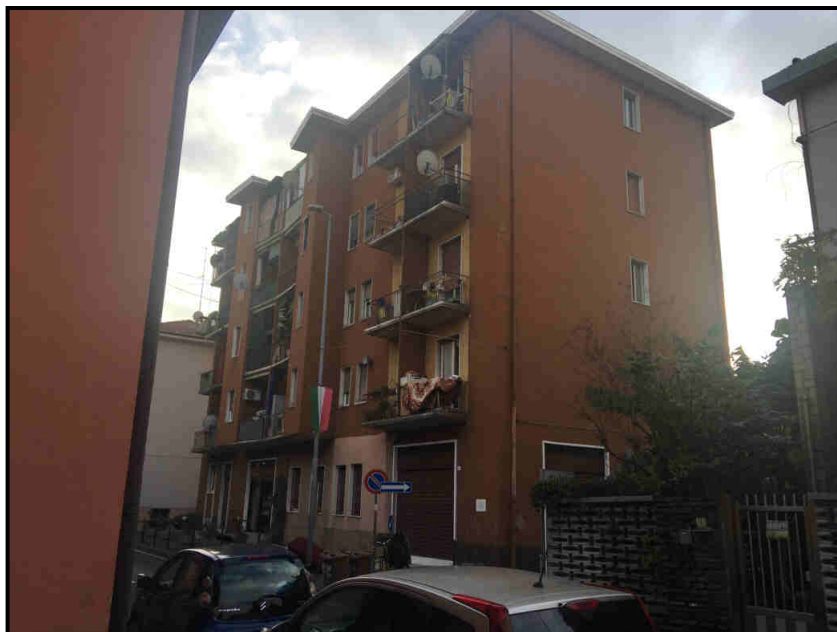


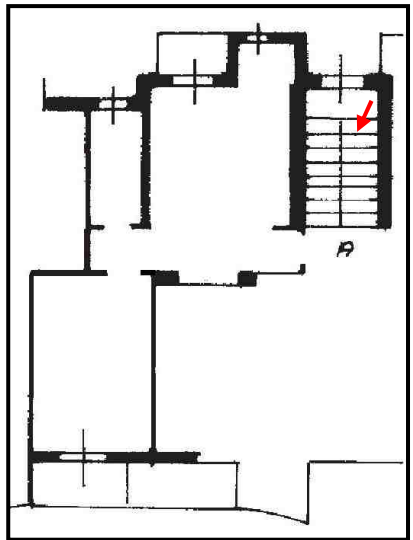
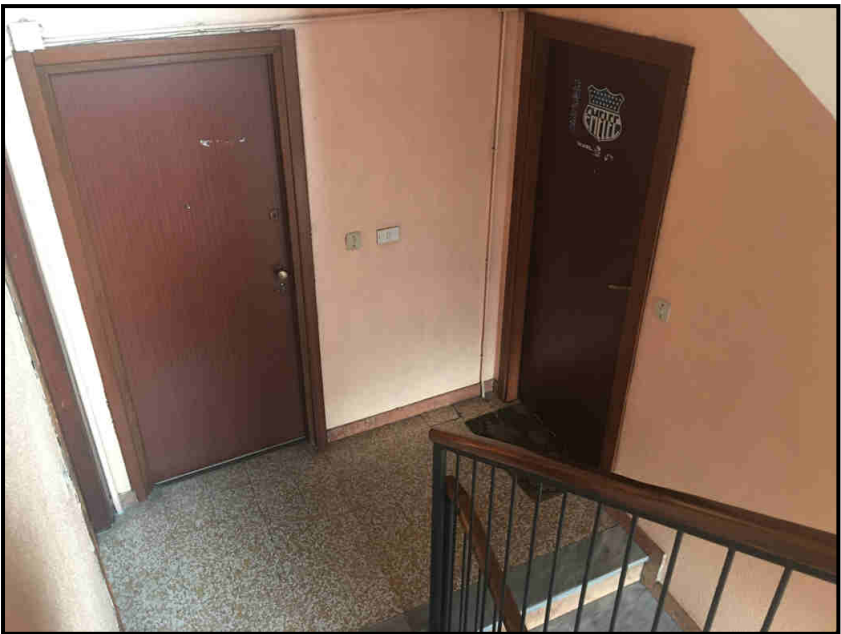
foto da via Gorizia



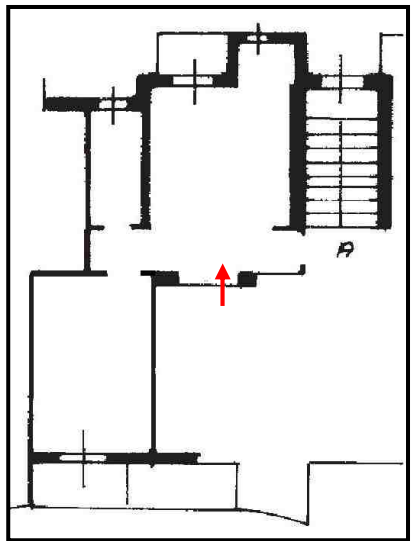
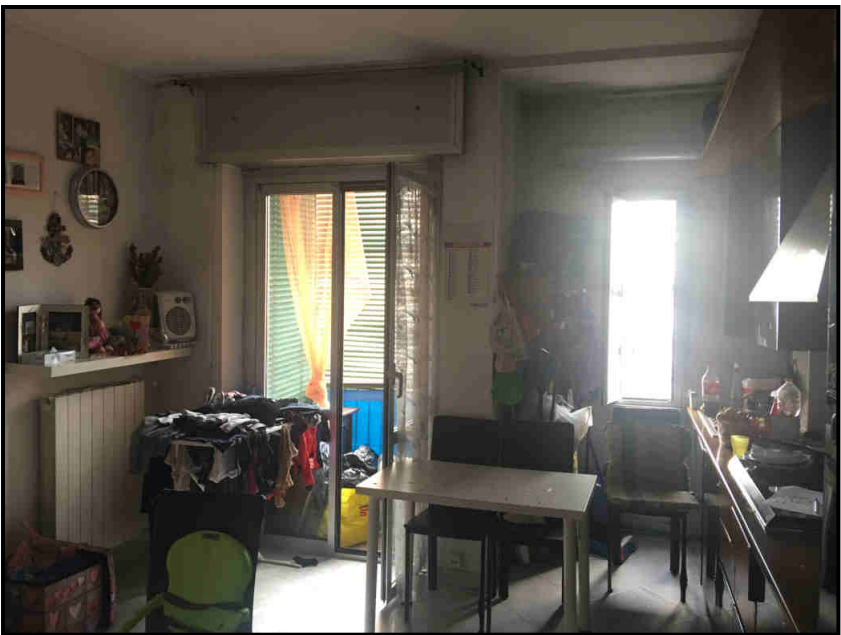
Foto da via Gorizia

Facciata immobile
oggetto di perizia

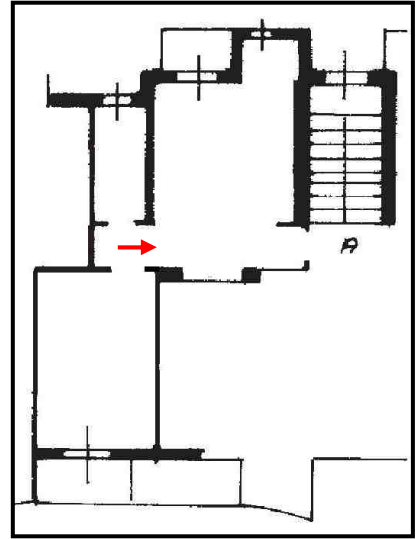
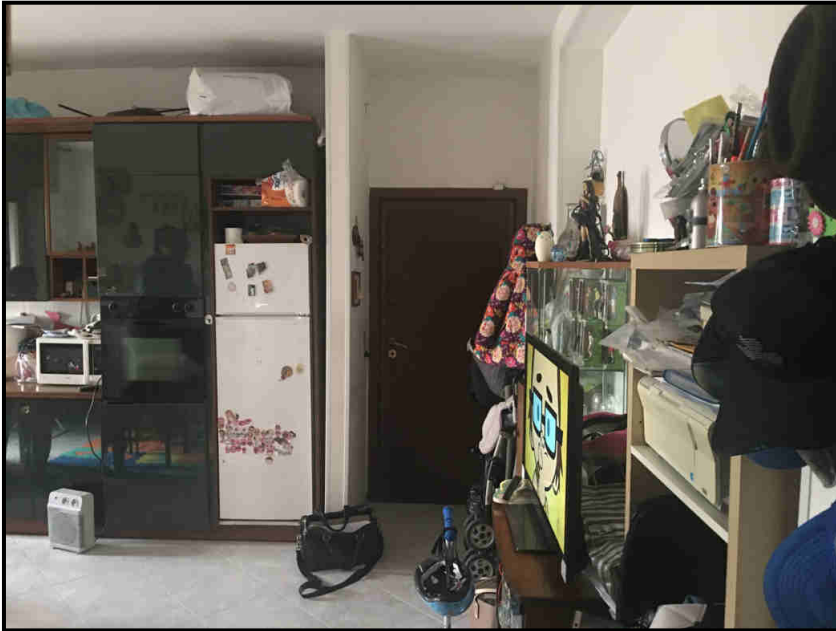
Foto interne



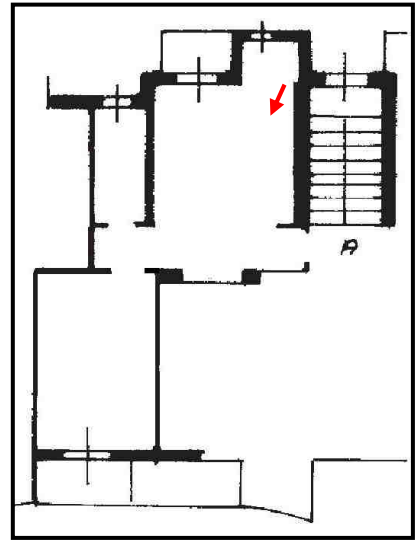
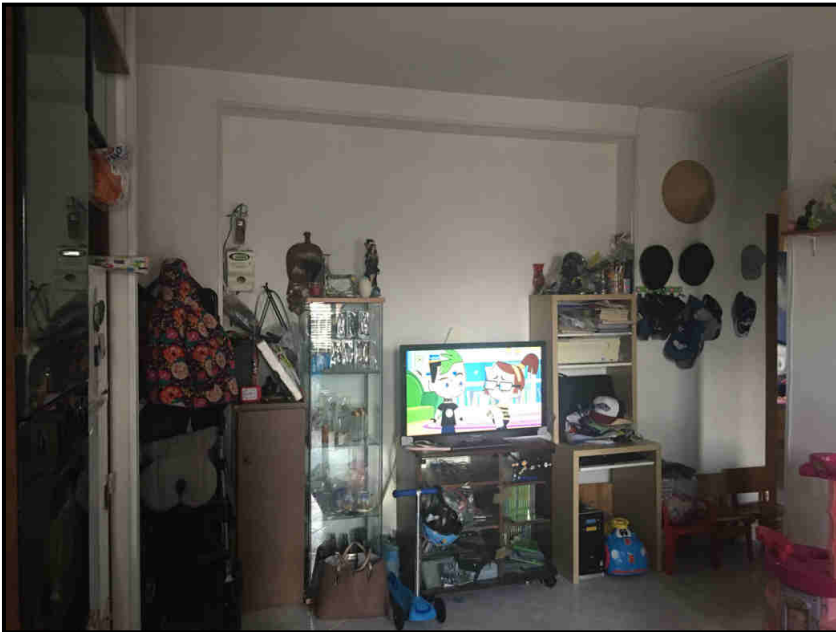
Scale comuni



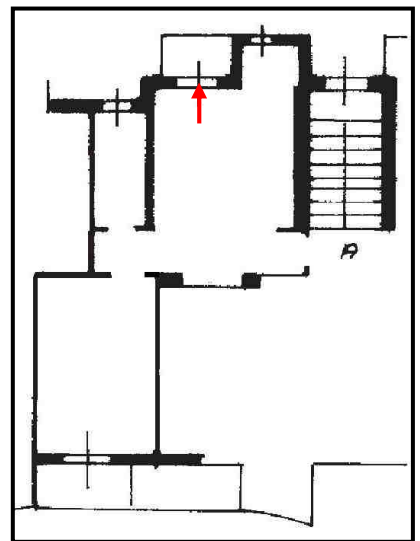
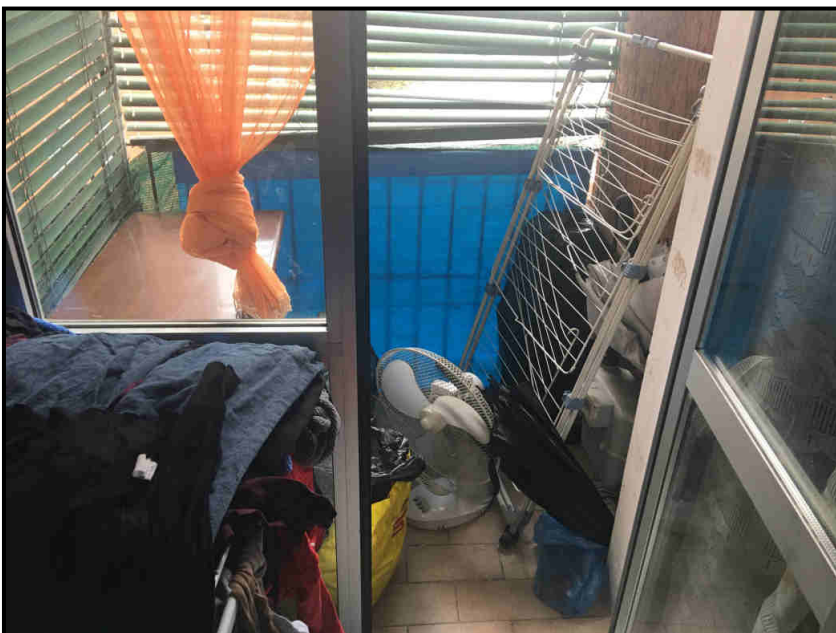
Soggiorno/cucina



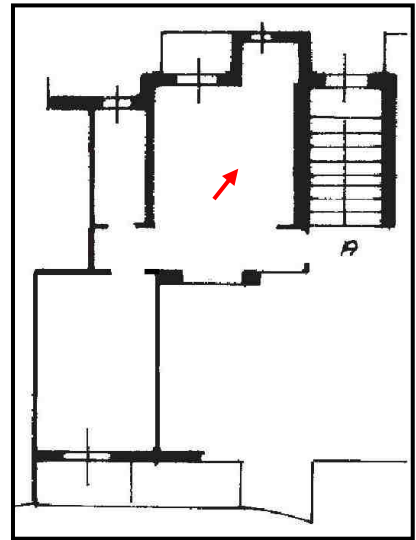
Soggiorno/cucina



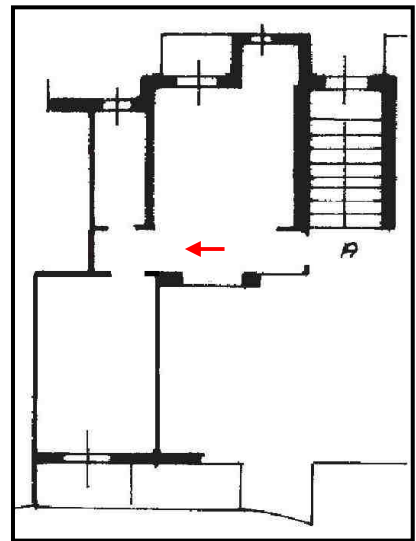
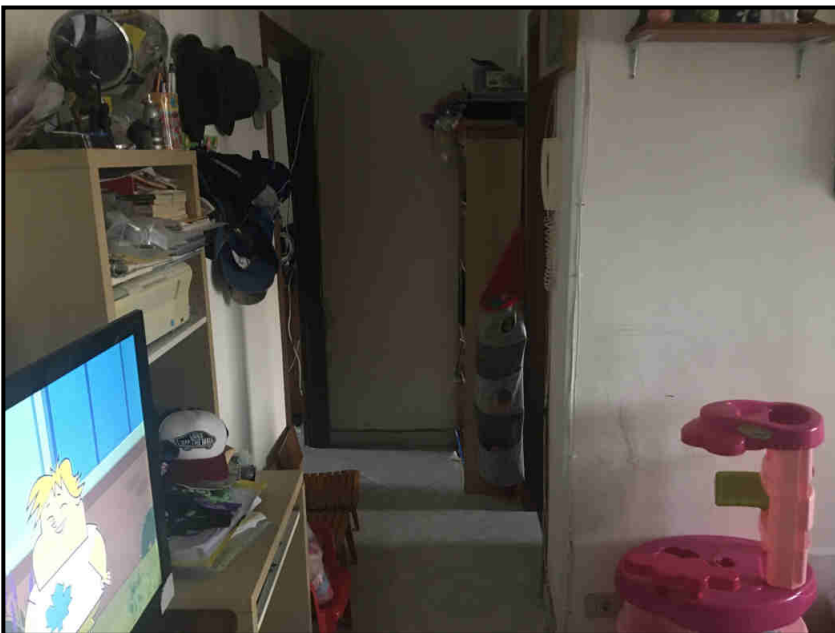
Soggiorno/cucina



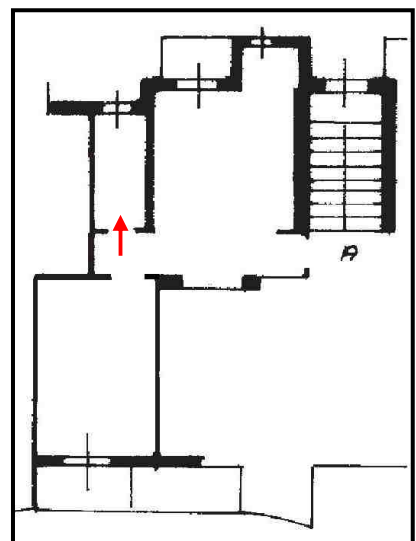
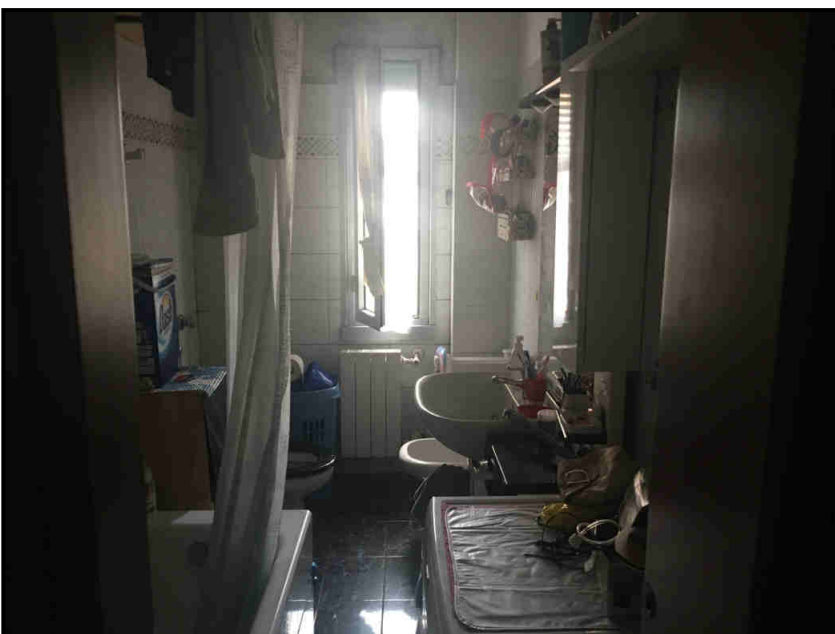
Balcone soggiorno/cucina



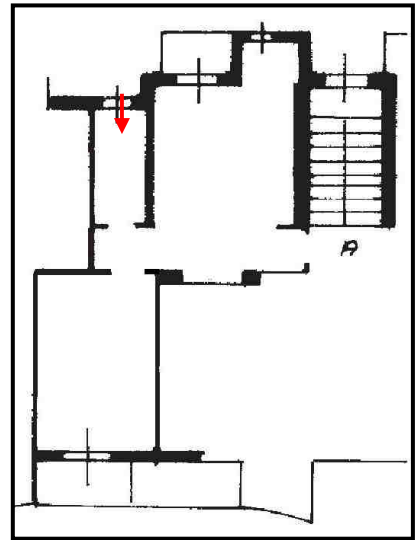
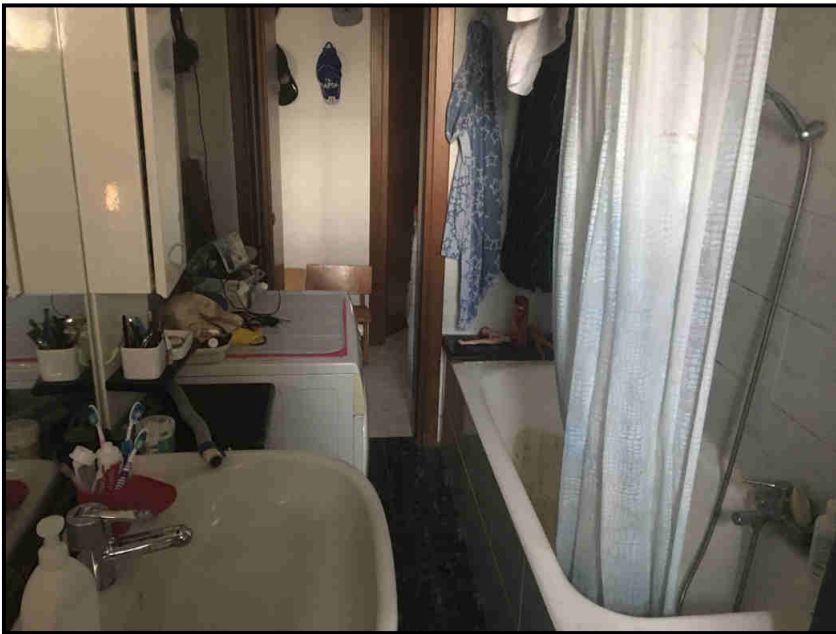
Angolo cottura



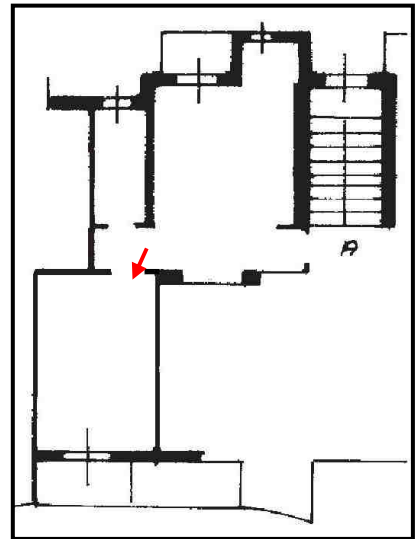
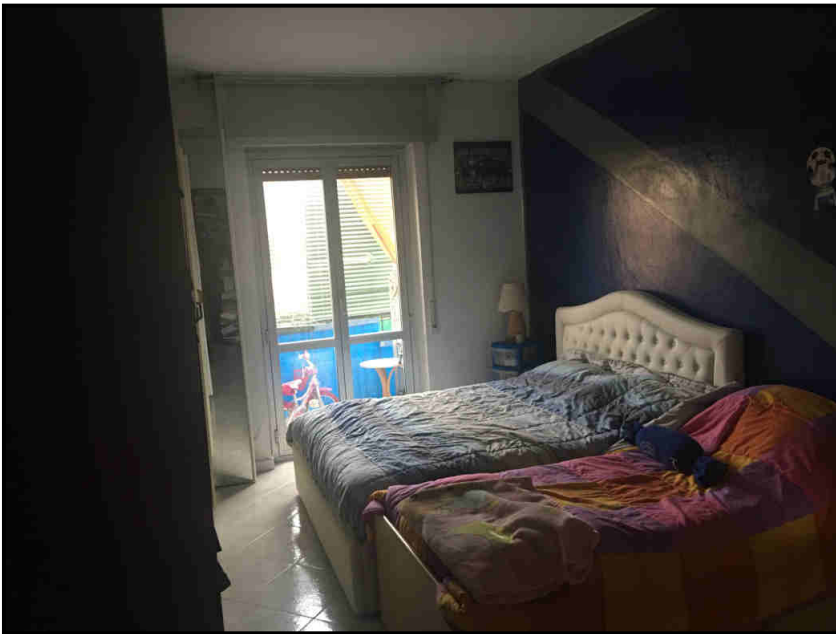
Corridoio



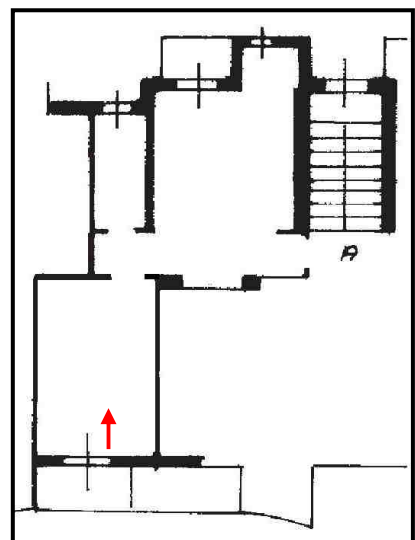
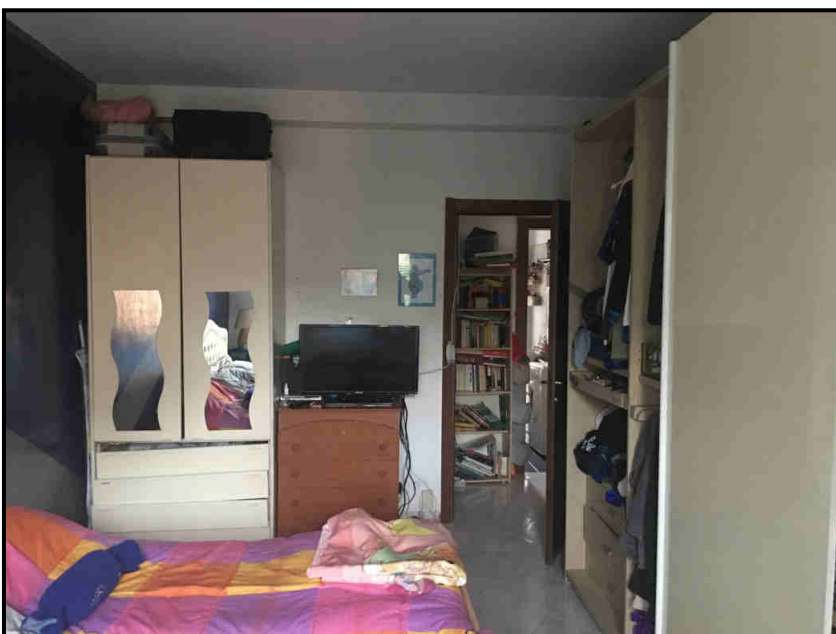
Bagno



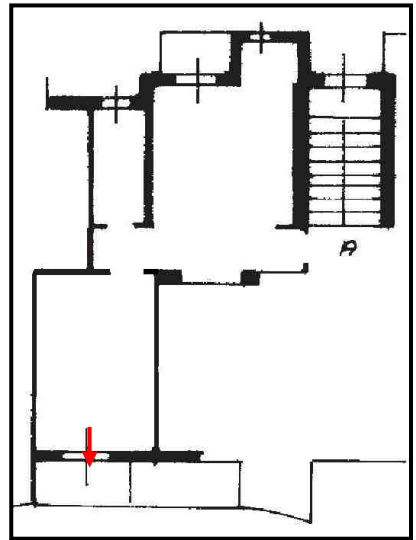
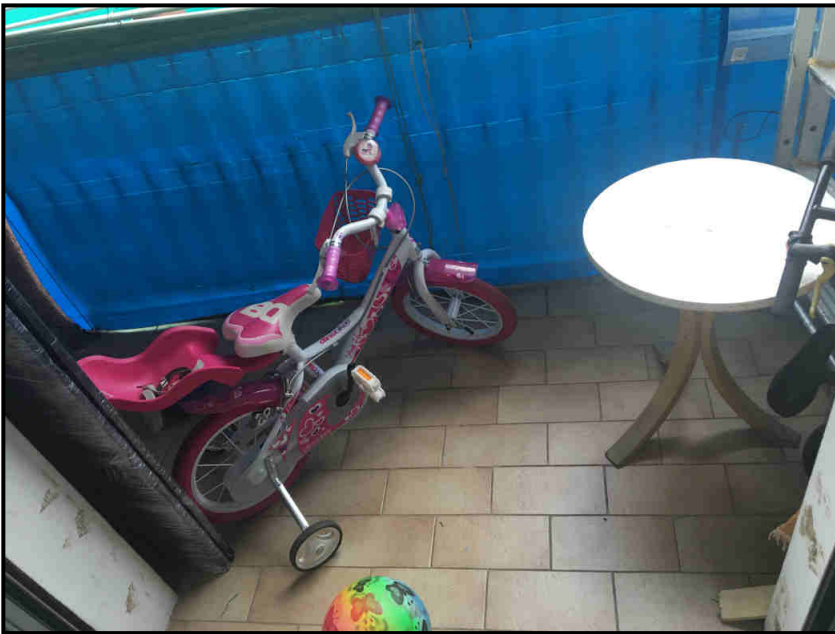
Bagno



Camera



Camera



Balcone camera

Cantina

