

architetto
ANTONIO COLAGRANDE
viale San Gimignano, n. 2/1
20146 MILANO

TELEMATICO

Sez. E.I. TRIBUNALE DI MILANO R.G.E. 143+3422/11
ITALFONDIARIO SPA (Intesa San Palo SPA) + EDIL PRODOTTI SRL
Creditori Procedenti
EDILIZIA TOMASONI SPA + EQUITALIA NORD SpA
Creditori Interventuti
C/O

GOT: dott.ssa Carla Facchini in sost. del G.E. dott.ssa V. BORONI
ESPERTO: arch. A. COLAGRANDE

ALLEGATO c)

FOTOGRAFIE ESTERNE ED INTERNE e PLANIMETRIE

RESIDENZA PT-1P E BOX: VIA G. MAMELI, CANEGRATE (MI)



Foto n. 1





Foto n. 2

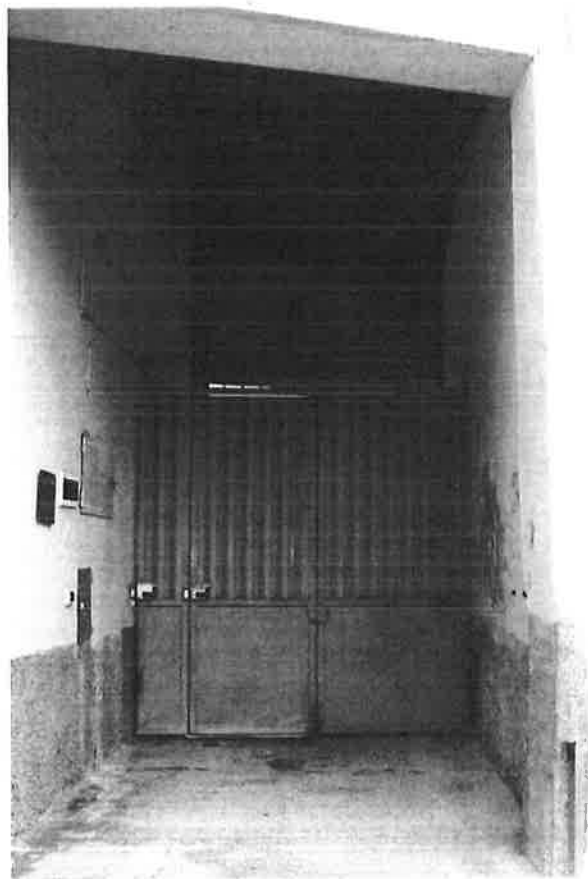


Foto n. 3





Foto n. 4

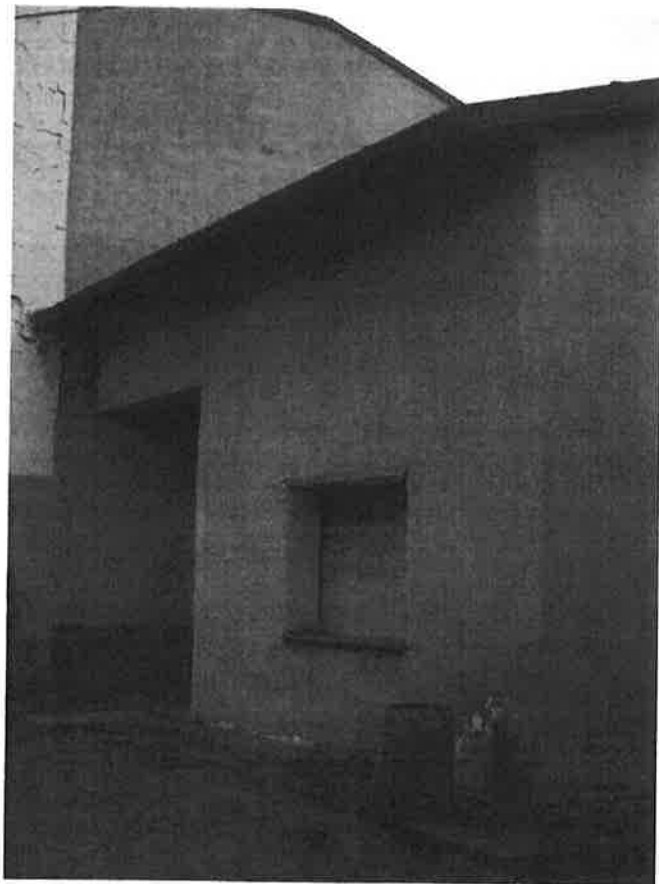


Foto n. 5



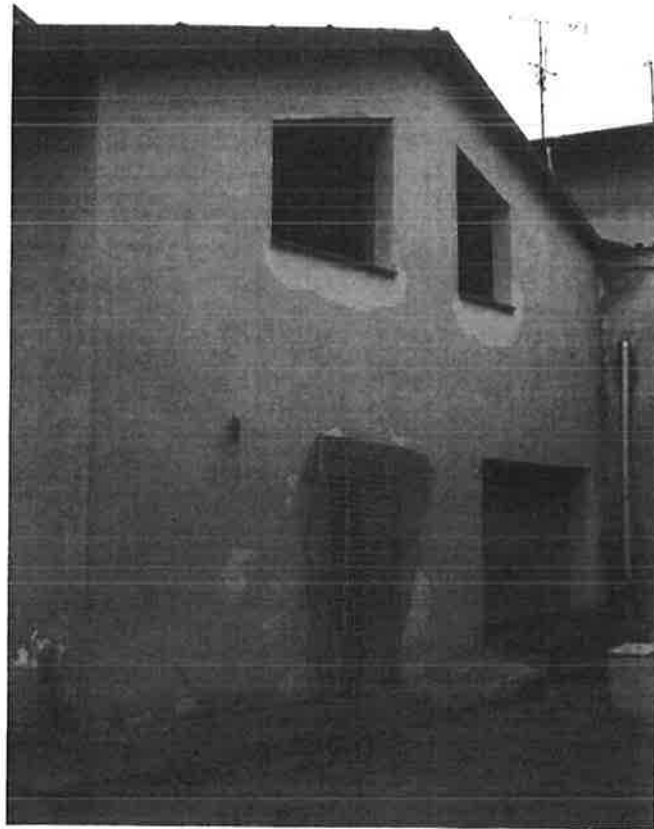


Foto n. 6

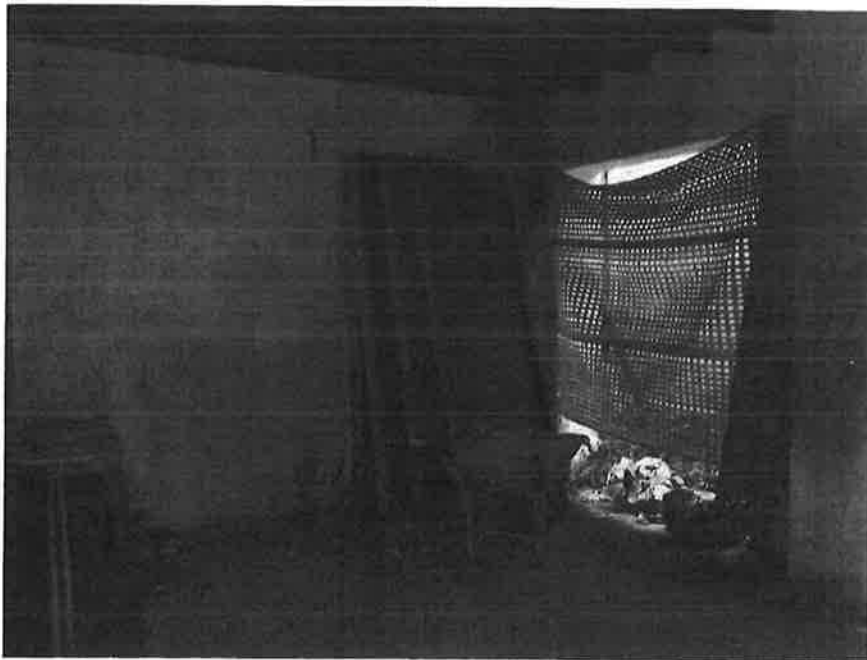


Foto n. 7



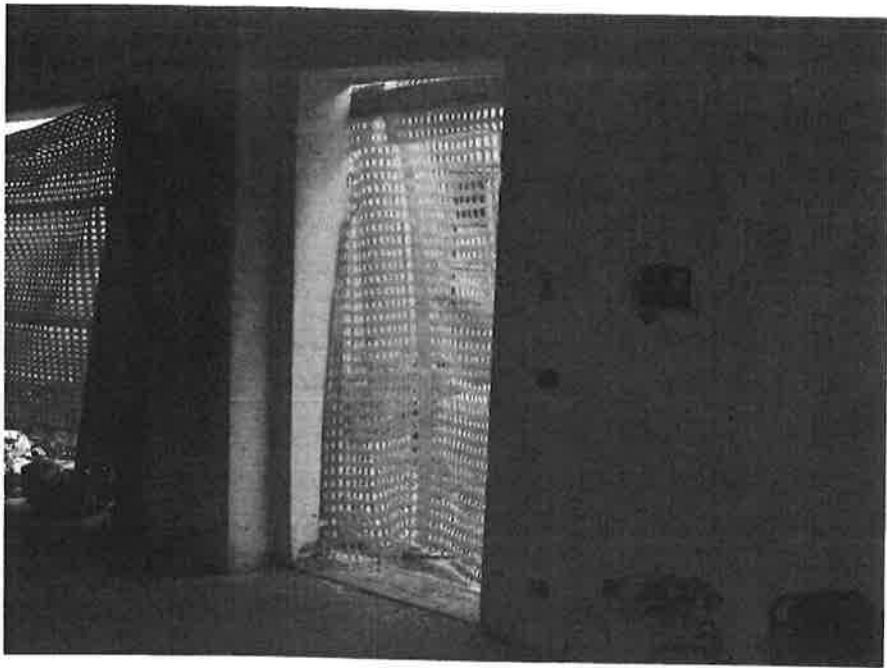


Foto n. 8

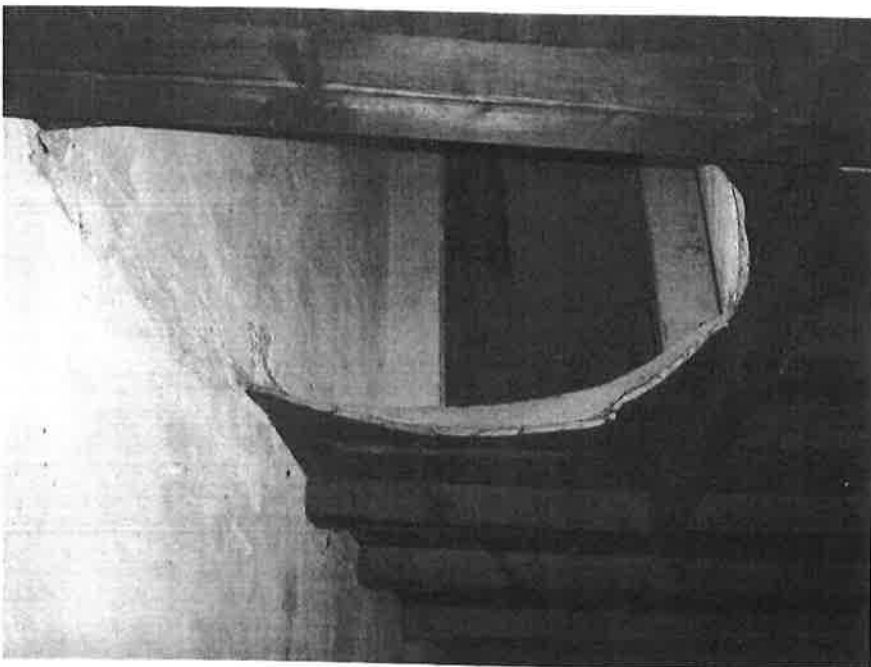


Foto n. 9



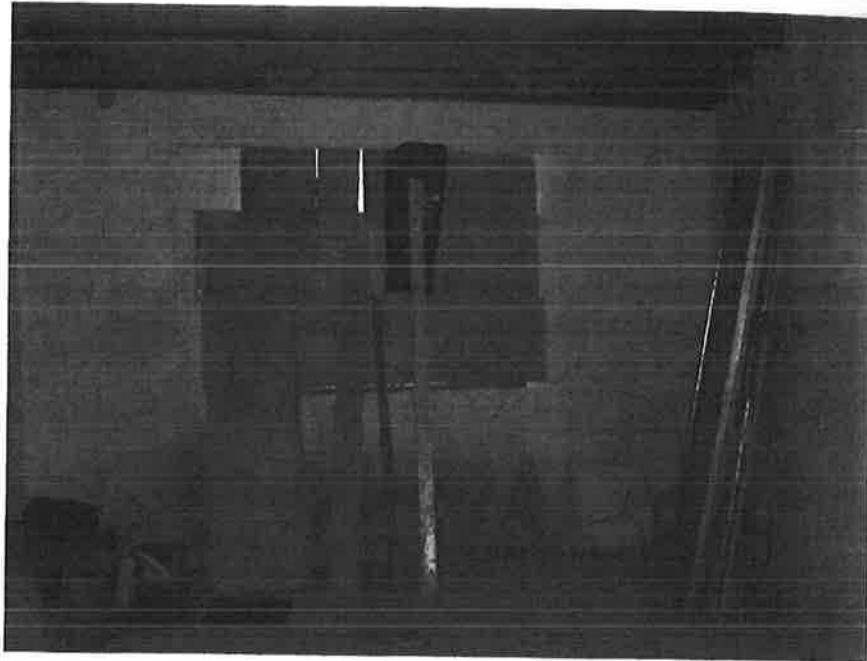


Foto n. 10

BOX: VIA PARMA, LEGNANO (MI)



Foto n. 11

