

Fotografie e Planimetrie

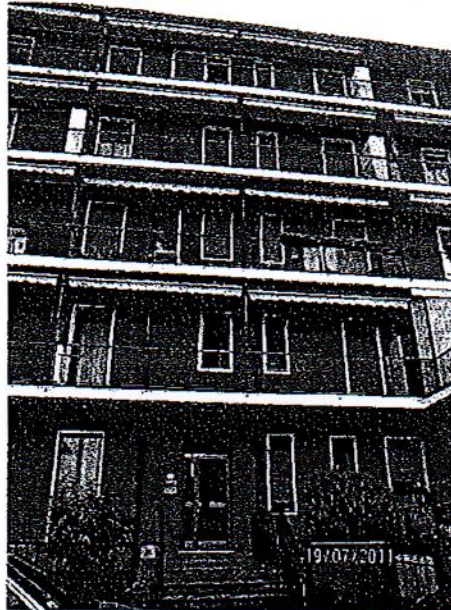


Foto 1. Vista dello stabile



Foto 2: ingresso allo stabile

Stampa circolare della Provincia di Udine, Ufficio Provinciale di Catastro, con data 19/07/2011 e altri dati illeggibili.



19/07/2011

Foto 3. Scala condominiale



19/07/2011

Foto 4. Disimpegno di ingresso all'immobile





(a)



(b)

Foto 5. Soggiorno



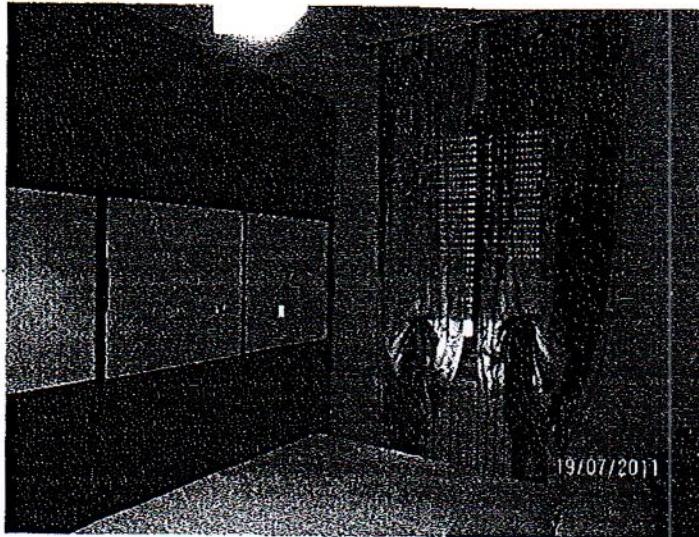


Foto 6. Camera

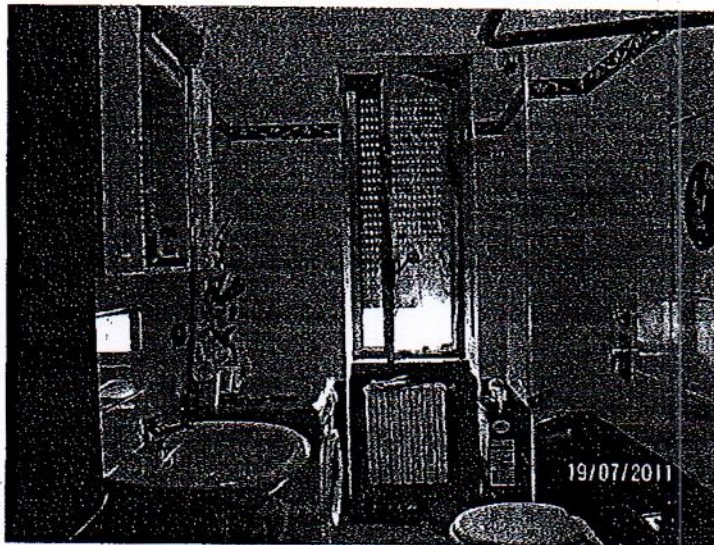


Foto 7. Bagno



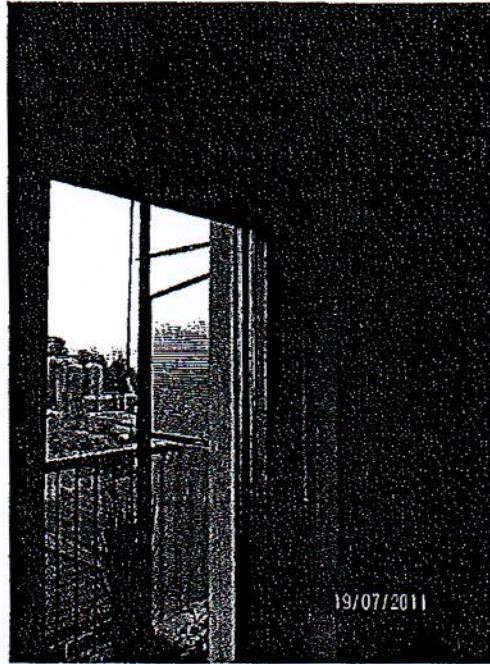


Foto 8. Infissi in alluminio

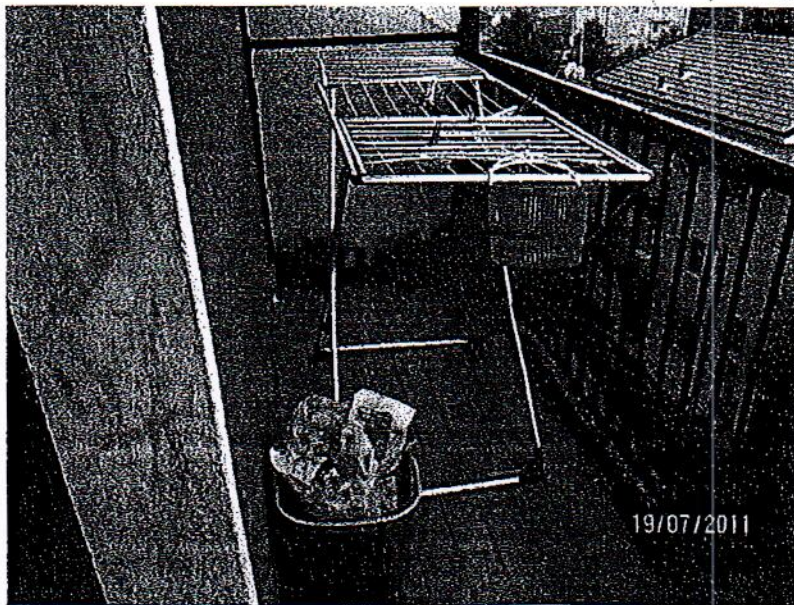


Foto 9. Terrazzo su Via Udine

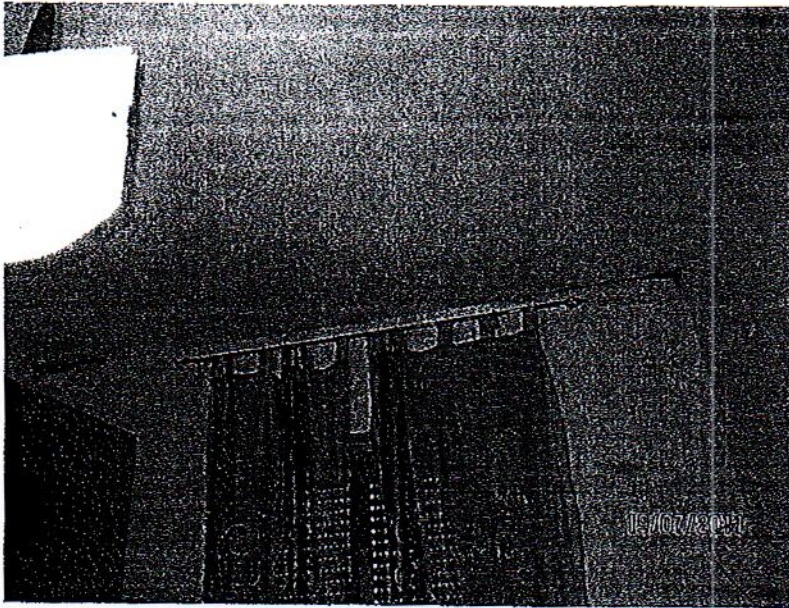


(a)



(b)





(c)

Foto 10. a, b, c Fenomeni di condensa sul lato cortile