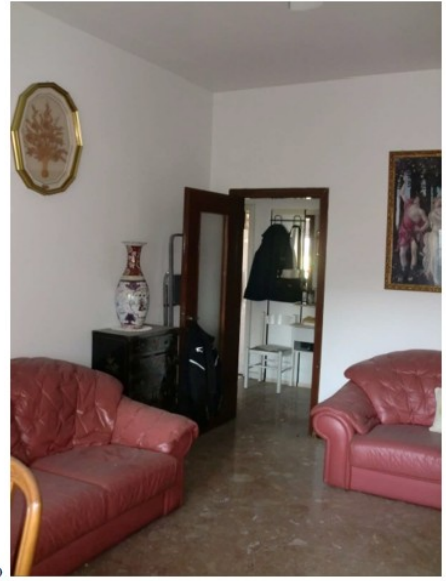
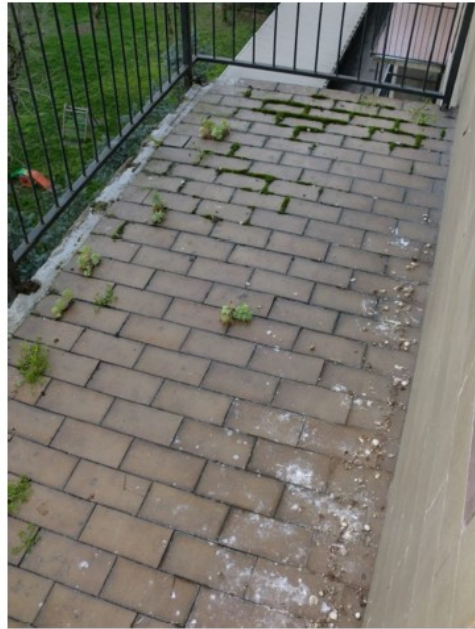


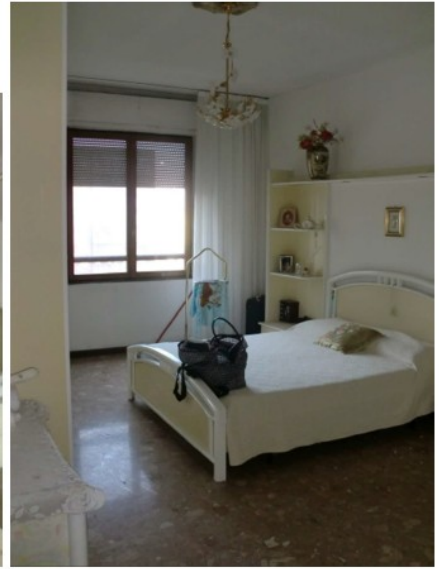
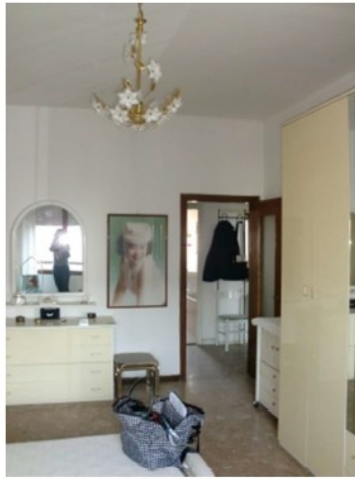


soggiorno



il balcone





camera matrimoniale



camera matrimoniale



camera



servizio igie

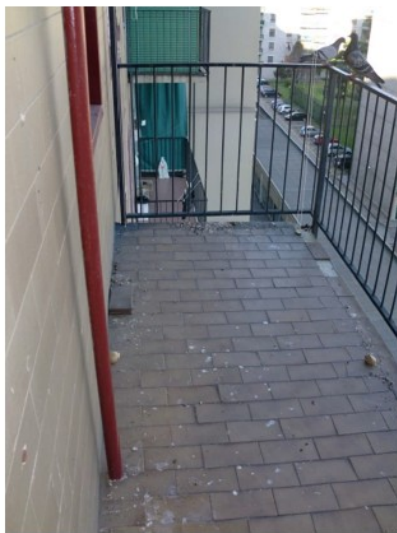


corridoio

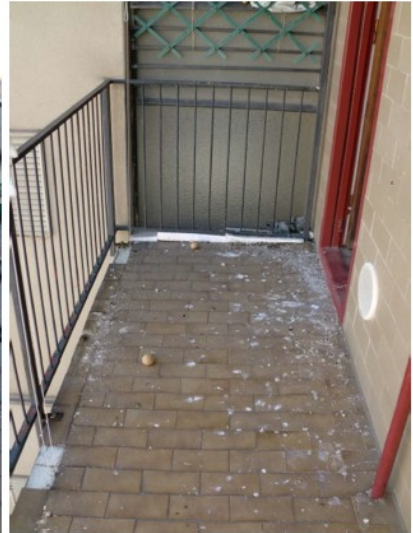




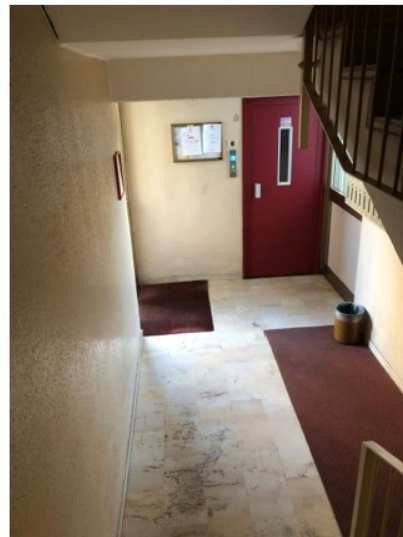
cucina



balcone della cucina



Edificio 34>> ingresso scala D



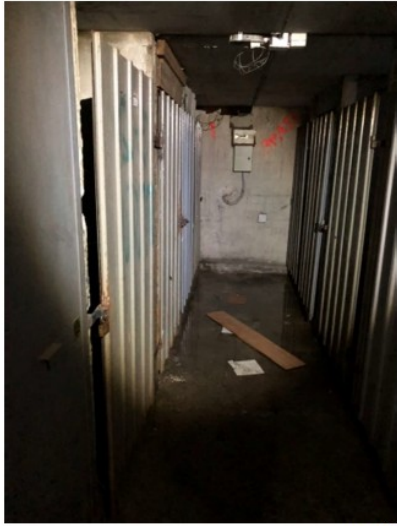
scorcio dell'androne - piano terra -



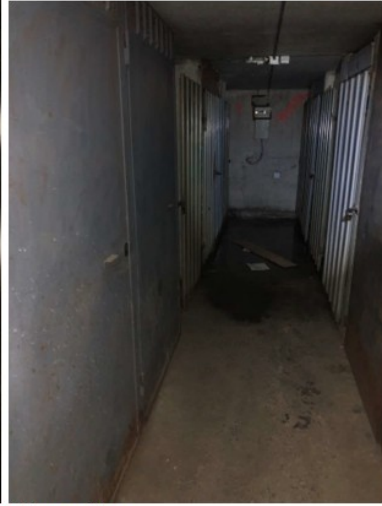
rampe delle scale (verso l'ingresso alloggi)



pianerottolo/ sbarco ascensore - nell'interpiano
(interpiano tra i piani in cui vi è l'ingresso degli alloggi)



corridoio cantine



scala d'accesso al piano interrato
in cui vi è la cantina (accessorio
dell'unità principale)