

Foto 2,3,4 – esterni edificio via Jacopino da Tradate, 7

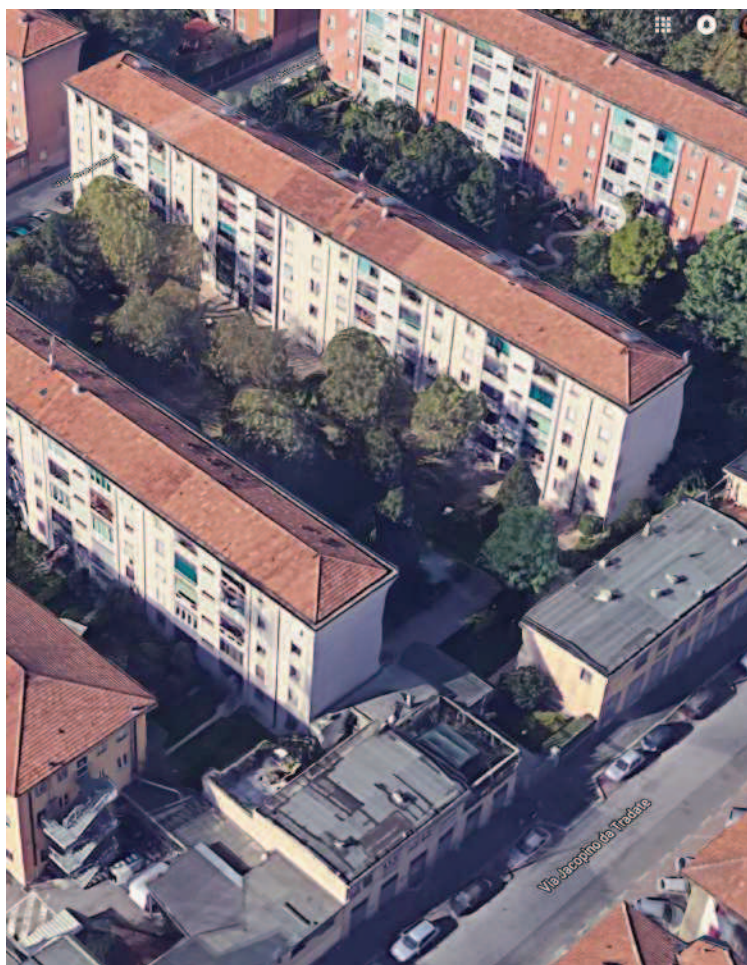


Foto 5,6 – facciate e giardino comune interno



Foto 7,8 – scale comuni e portoncino d'entrata

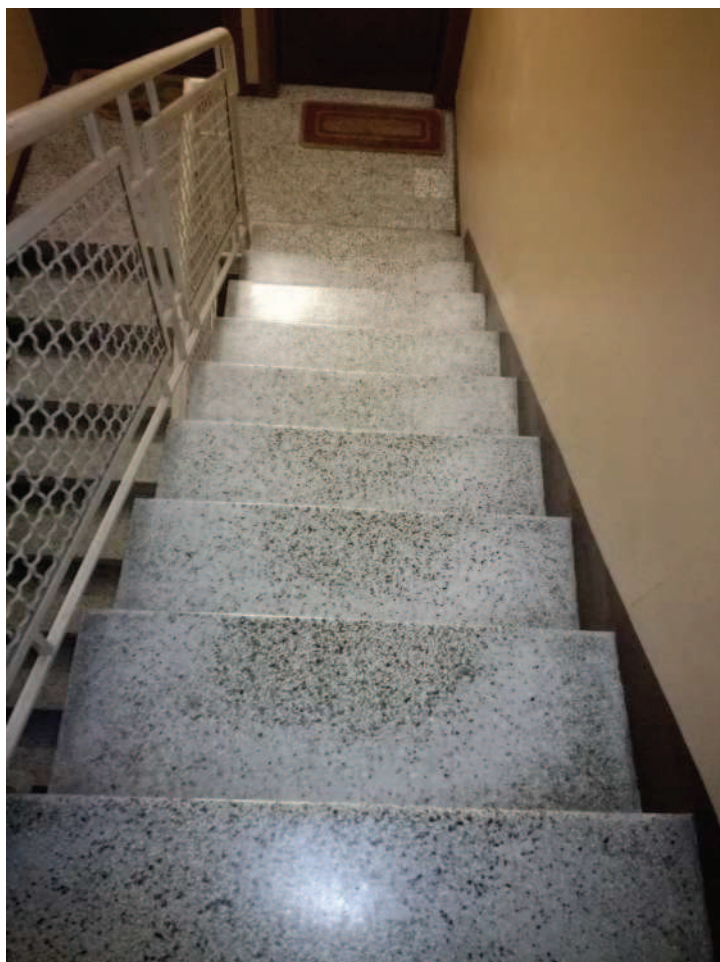


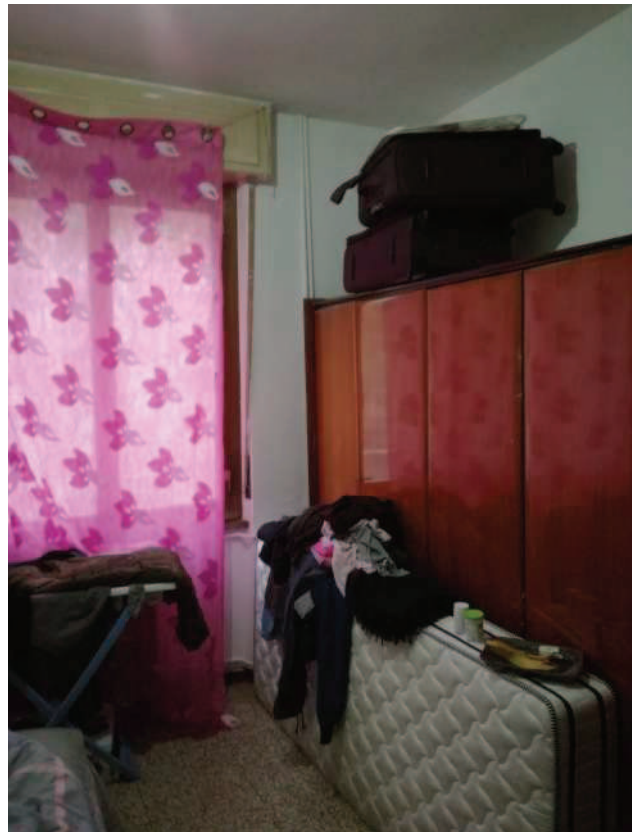
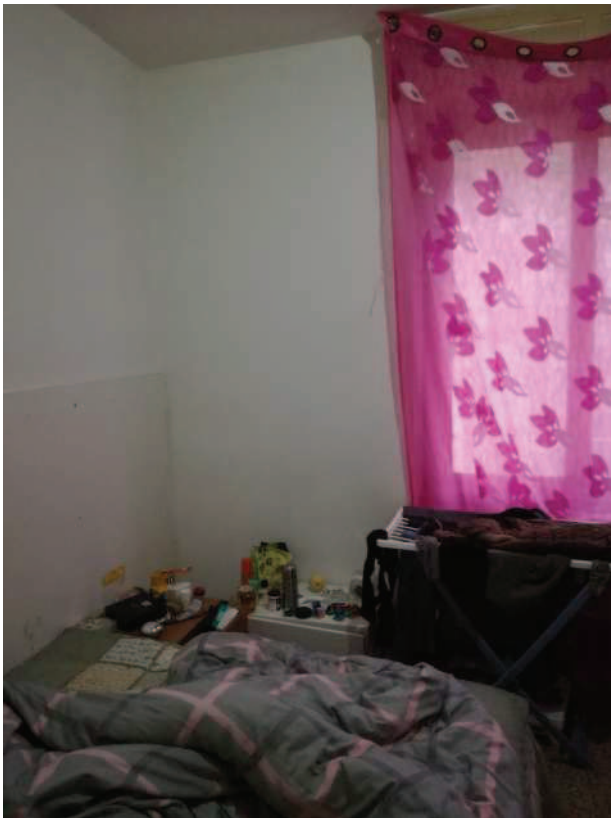
Foto 9,10 – corridoio visto da ambo i lati



Foto 11,12 – cucina



Foto 13-20 – camere da letto



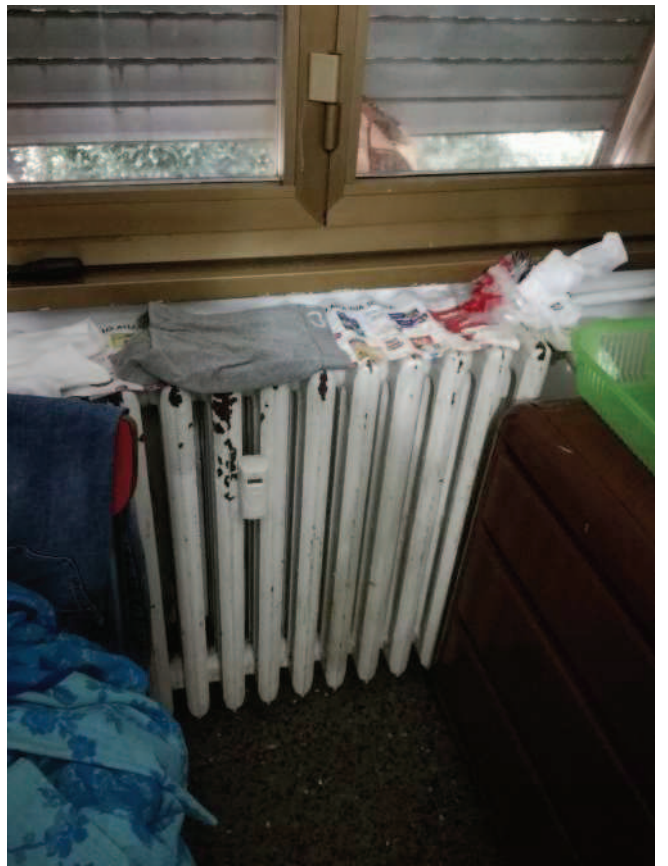


Foto 21-23 – bagno e particolari infissi



Foto 24-26 – pavimento e rivestimenti

