

BANCO POPOLARE SOC. COOP.

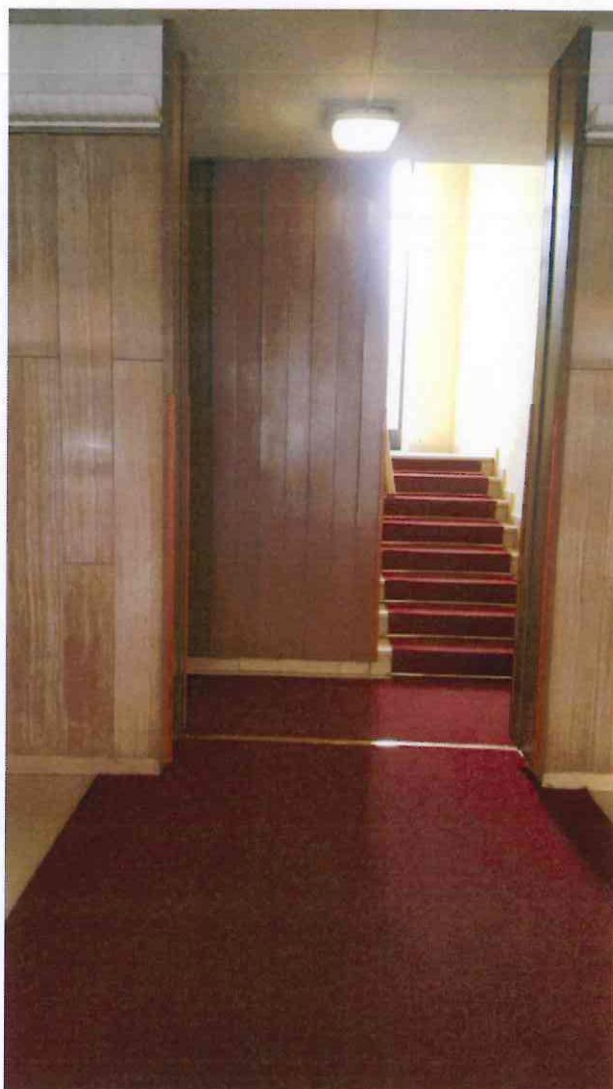
contro



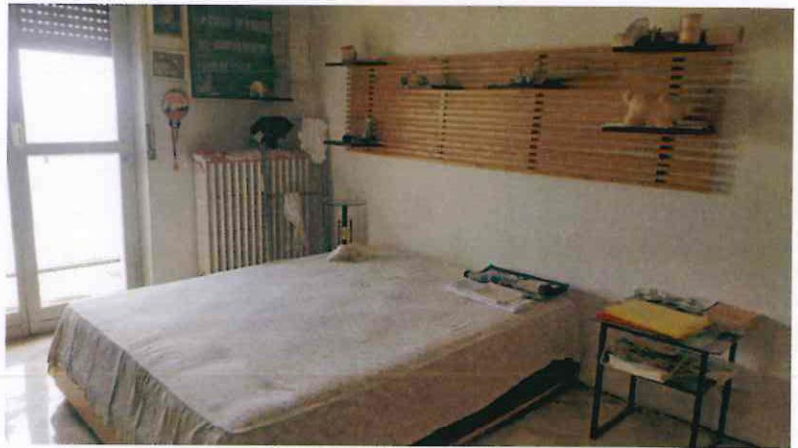
R.G.E. 1434/2014

GIUDICE ESECUTORE – DOTT.SSA IDAMARIA CHIEFFO

Foto esterno – ingresso via Wagner n.8



Soggiorno



Cucina

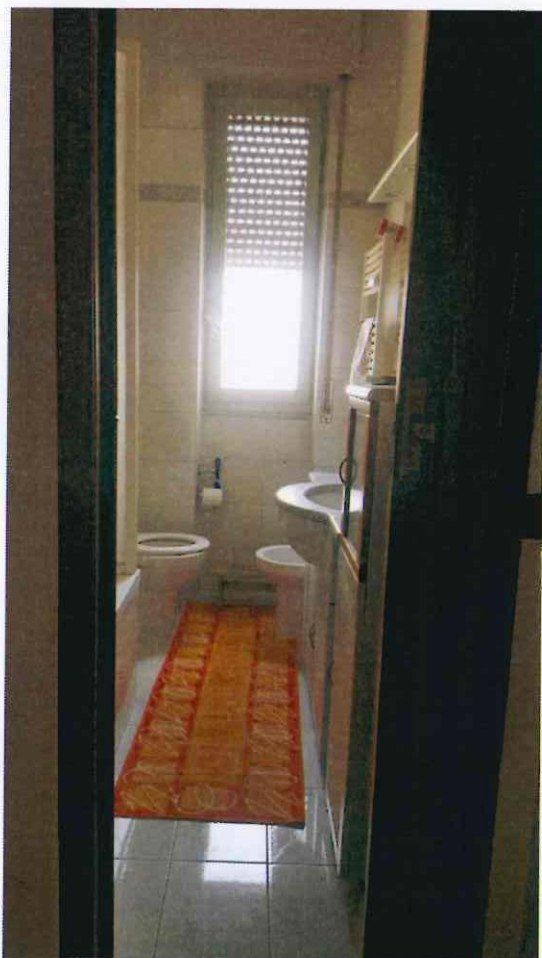




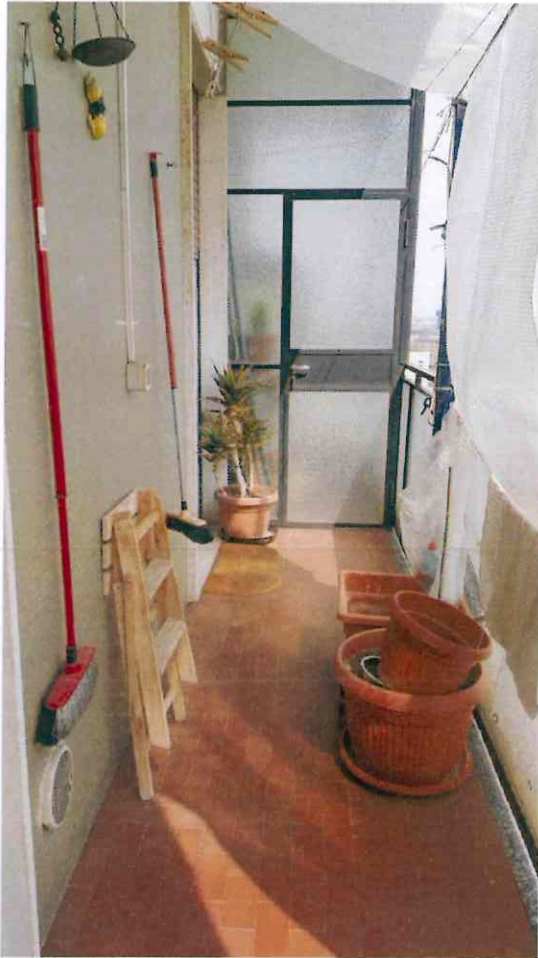
Camera matrimoniale



Bagno



Balcone



Disimpegno

