

all. 11

**Fotografie esterne ed interne del bene,
nonché la relativa planimetria**

Foto aerea - ubicazione dell'immobile



Foto esterne



foto facciata da via Grandi



Foto lato ovest

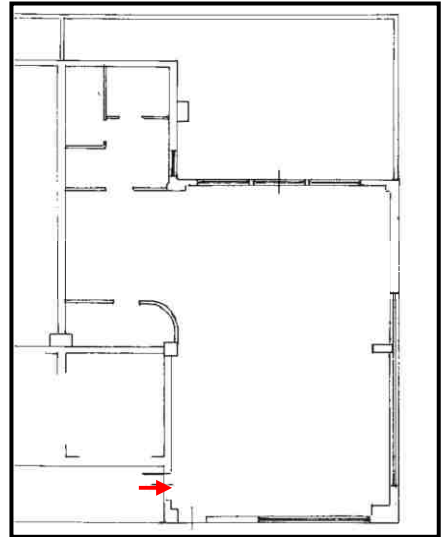
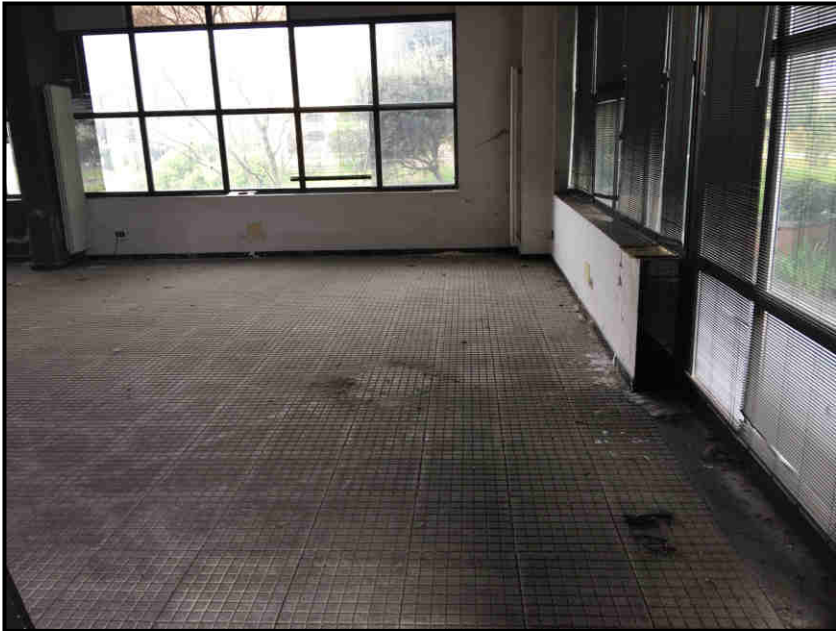


Facciata immobile
oggetto di perizia

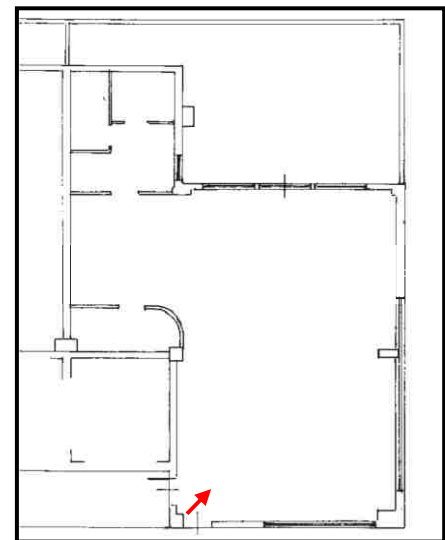
Parapetto del terrazzo
dell'immobile oggetto di perizia

Foto facciata da cortile
interno

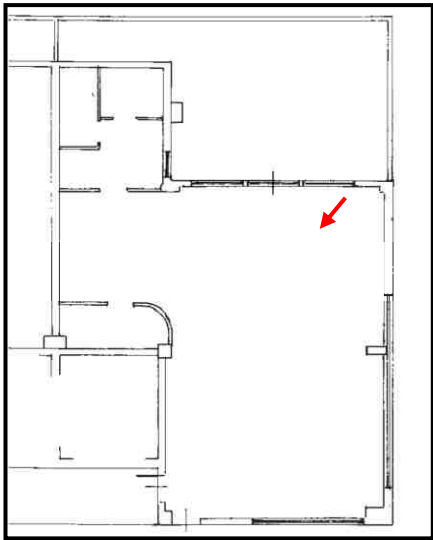
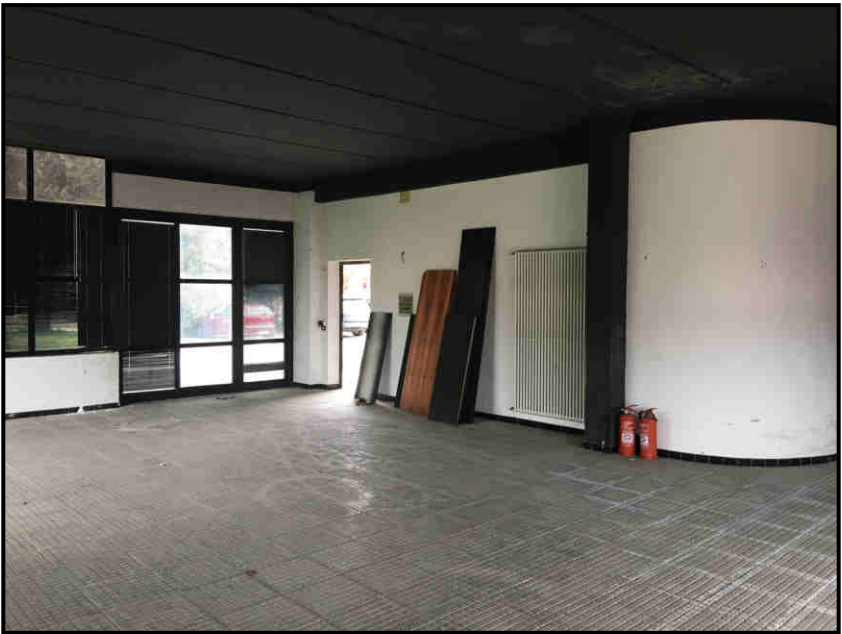
Foto interne



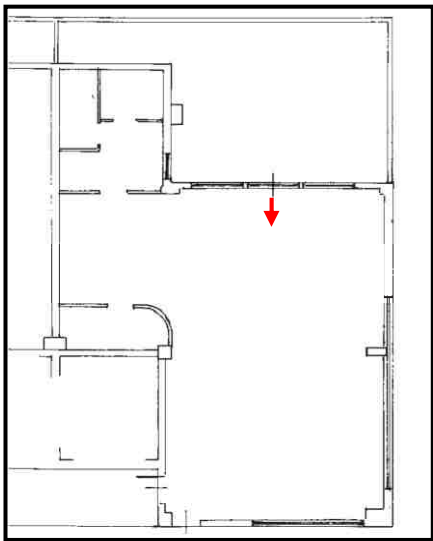
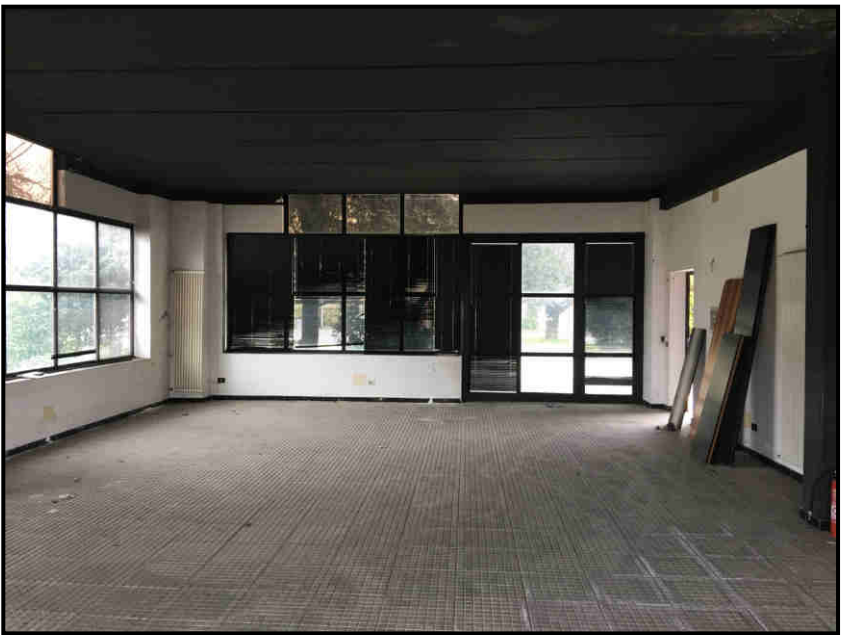
Locale



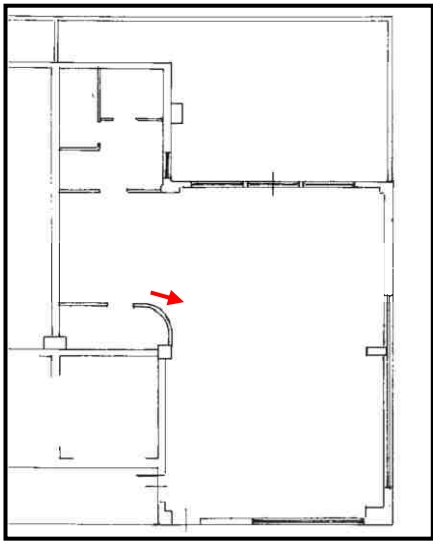
Locale



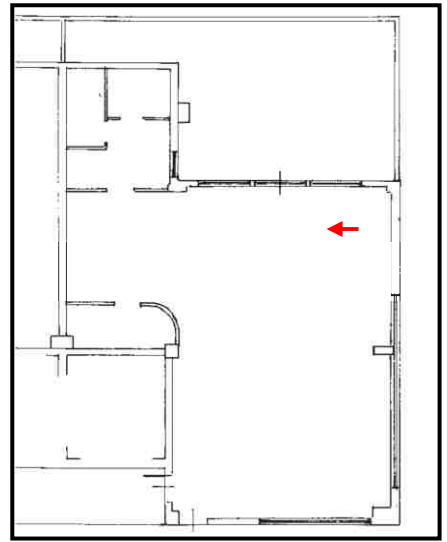
Locale



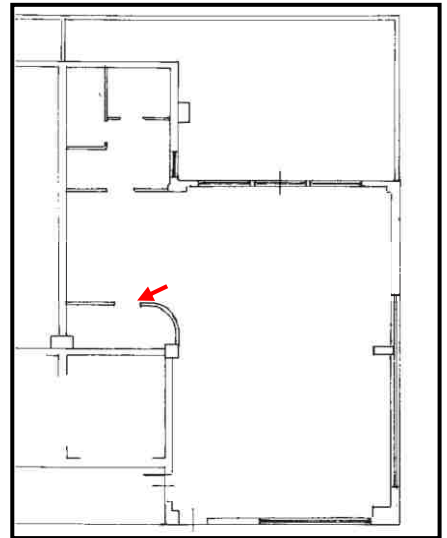
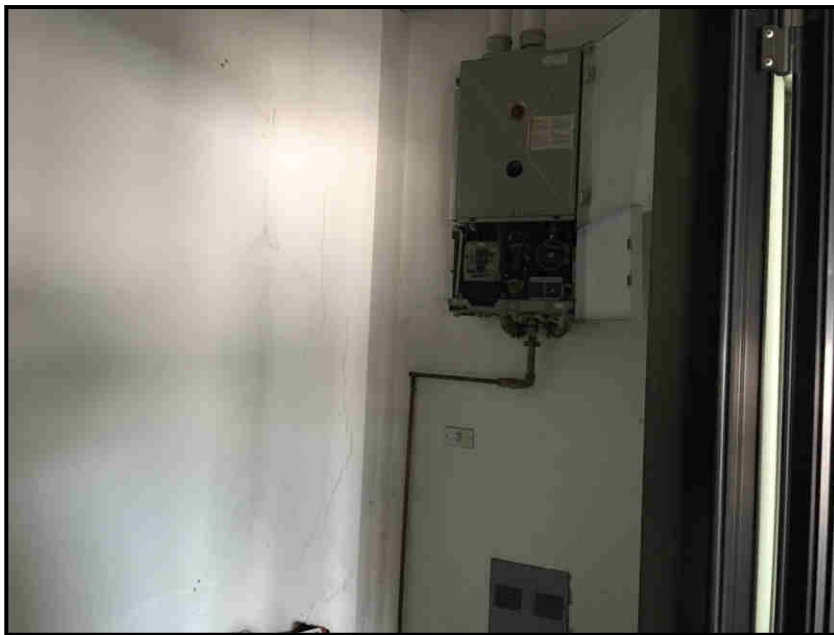
Locale



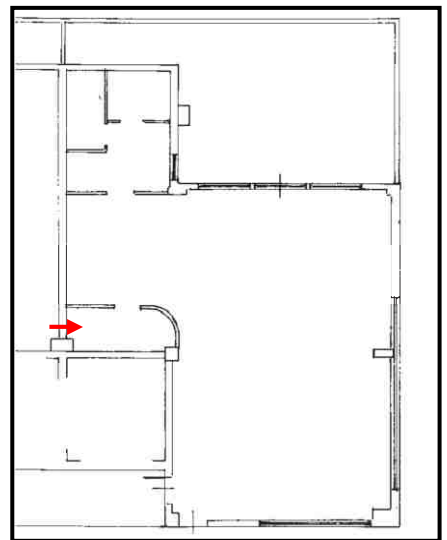
Locale



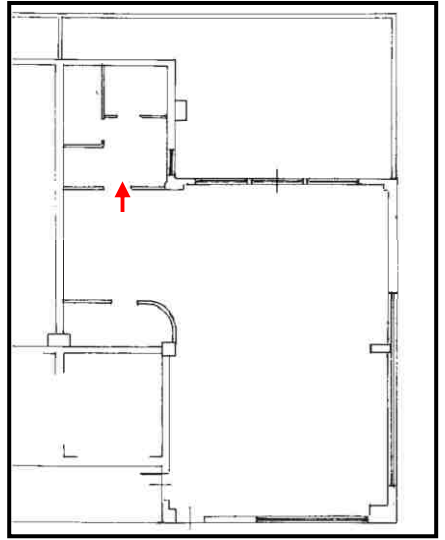
Locale



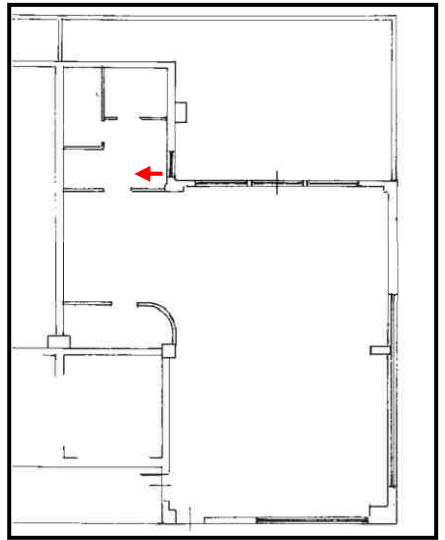
Ripostiglio



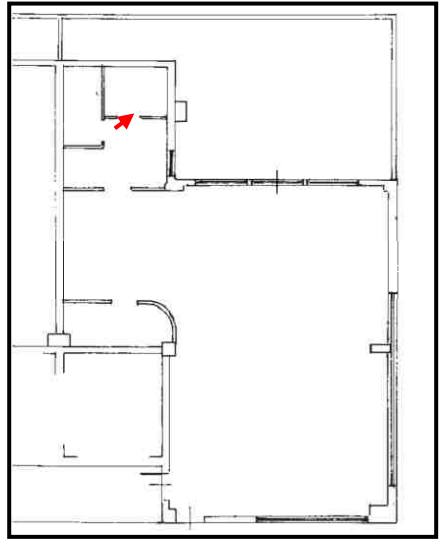
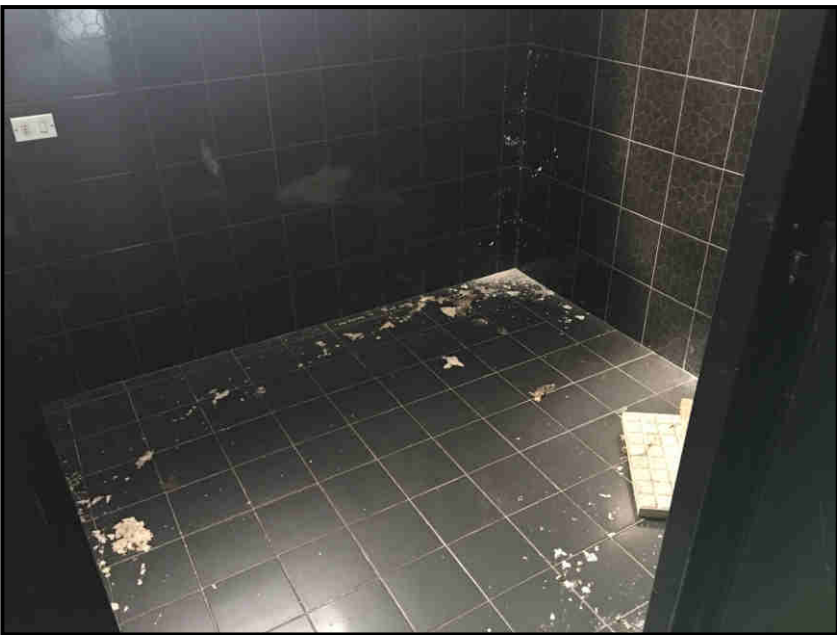
Ripostiglio



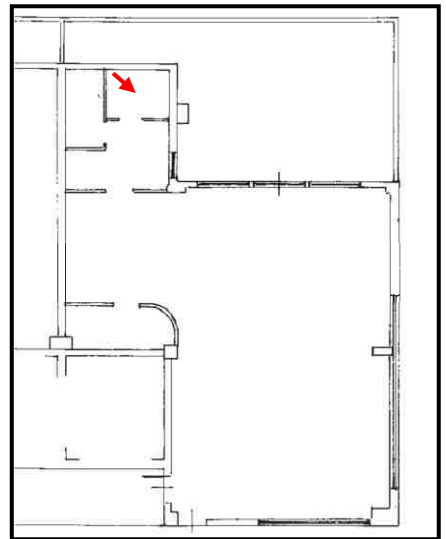
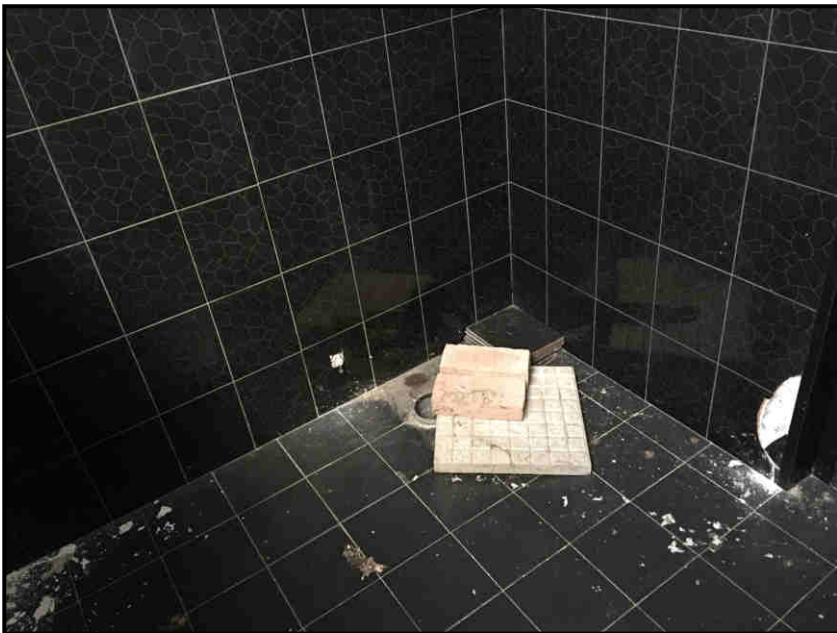
Servizi igienici



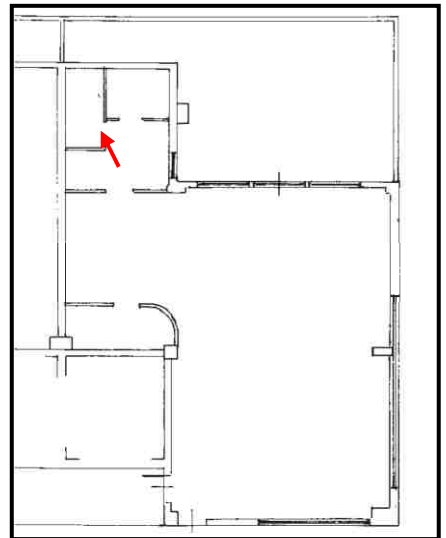
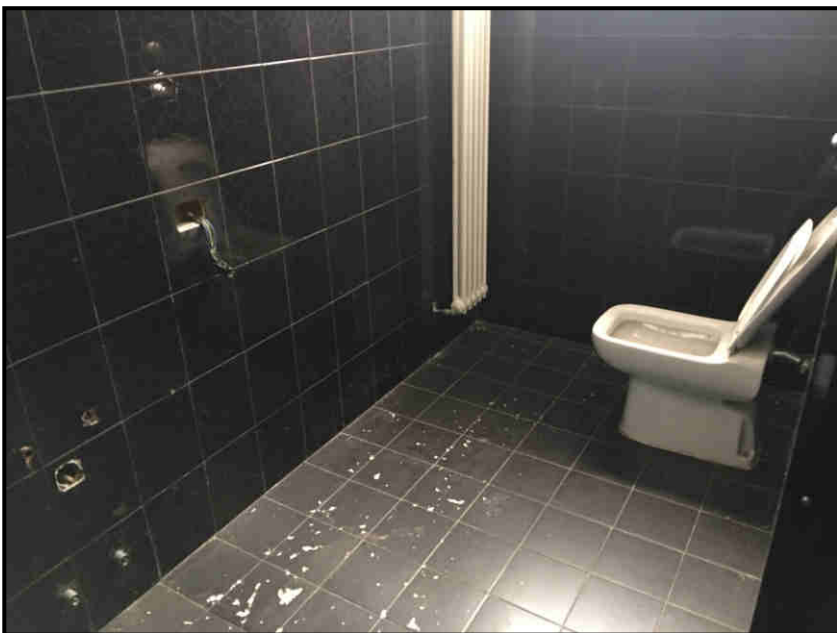
Servizi igienici



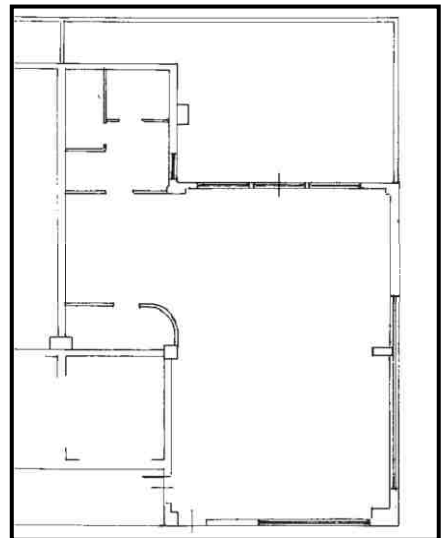
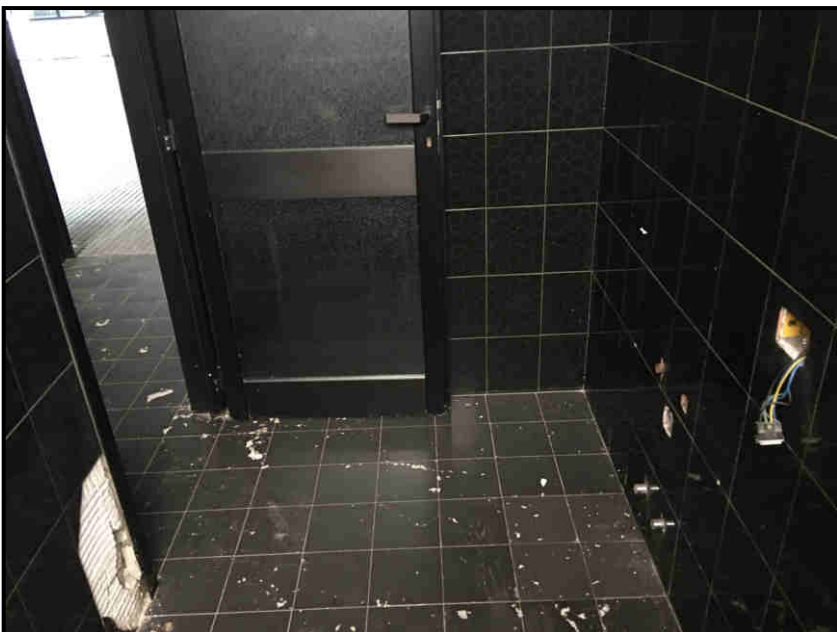
Servizi igienici



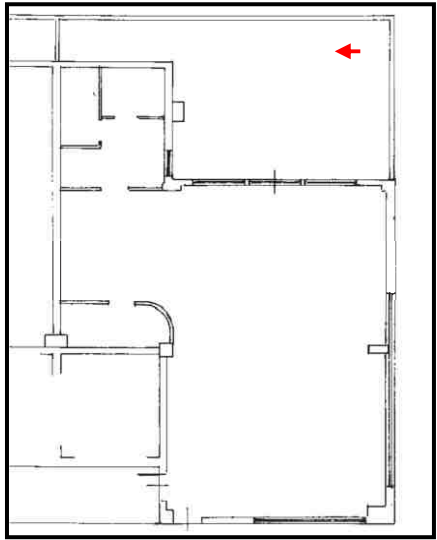
Servizi igienici



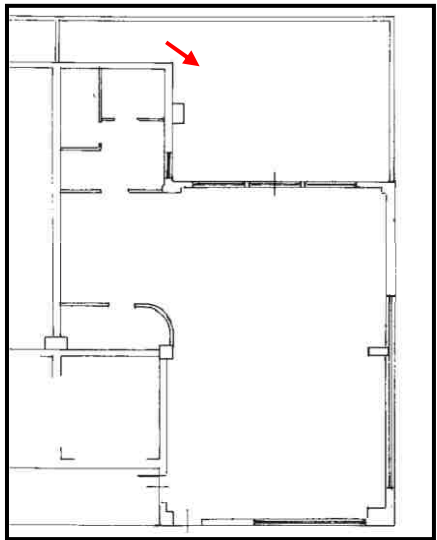
Servizi igienici



Servizi igienici



Terrazzo



Terrazzo