



Stato u.i. fabbricato in facciata



Androne condominiale piano terreno



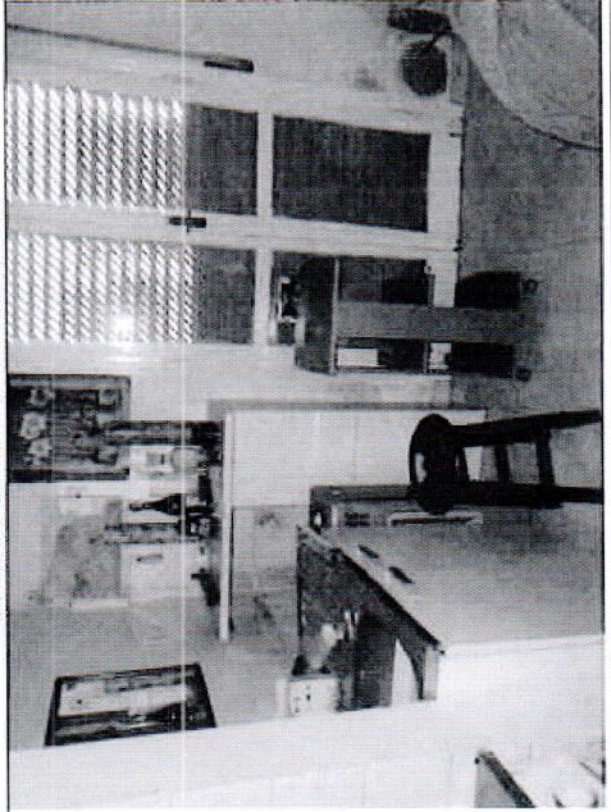
Vista facciata da strada



Cortile comune



Ballatoio comune di accesso all' u.i.



Vista interno u.i.



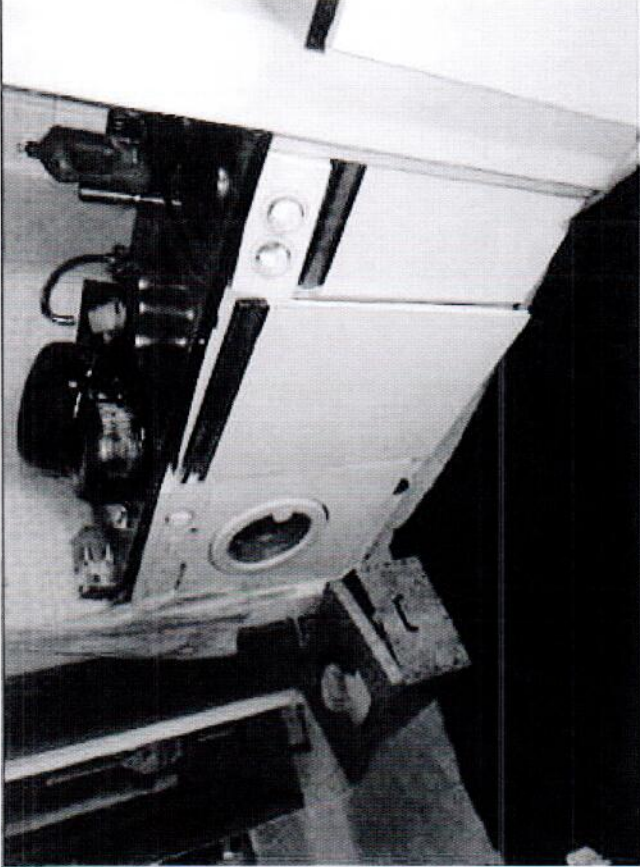
Pianerottolo comune vano scala



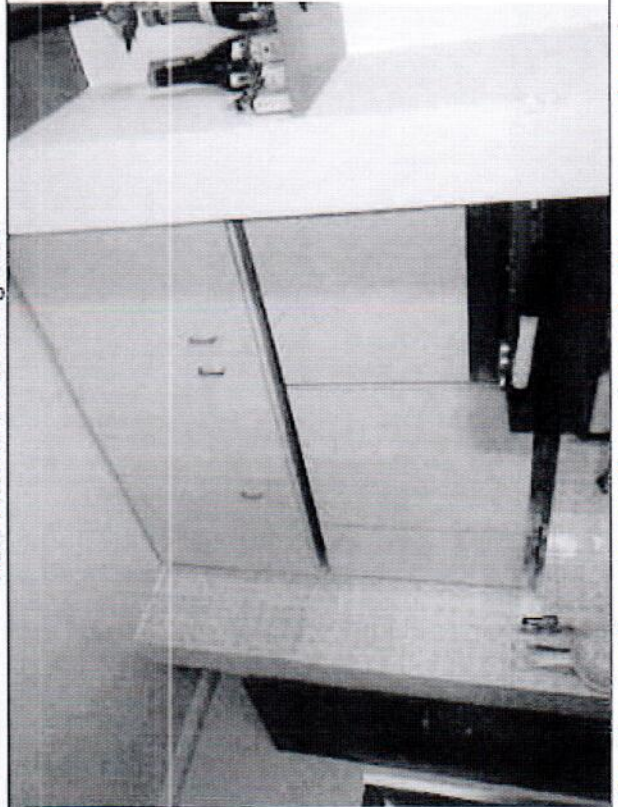
Ingresso u.i.



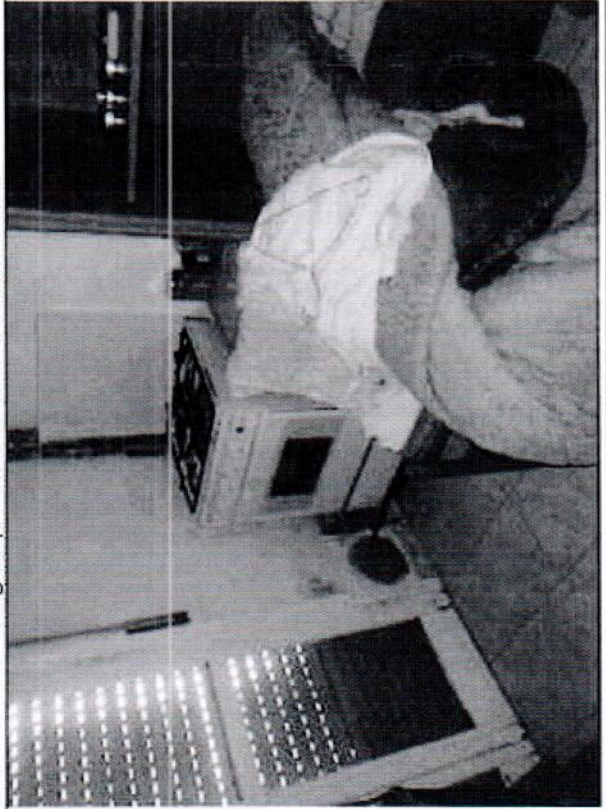
Vista interna u.i. zona ingresso



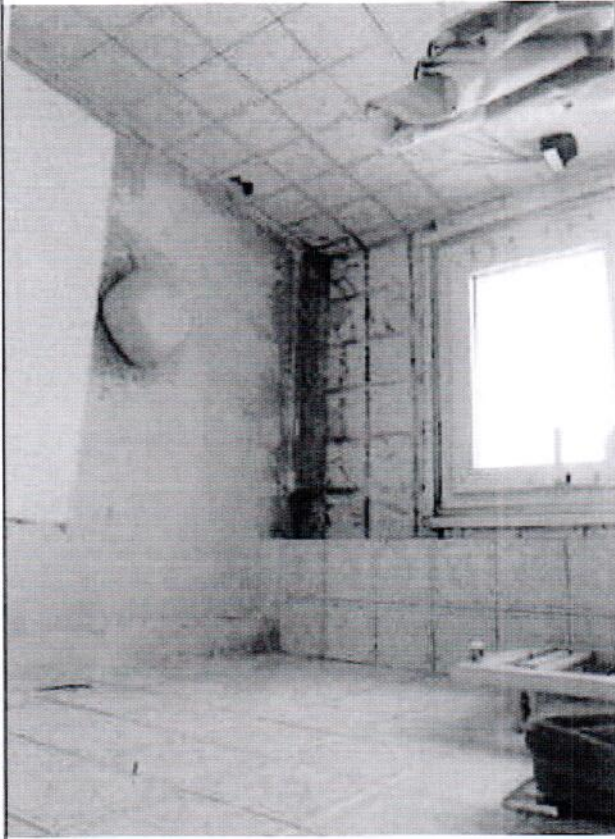
Angolo parete attrezzata a cucina u.i.



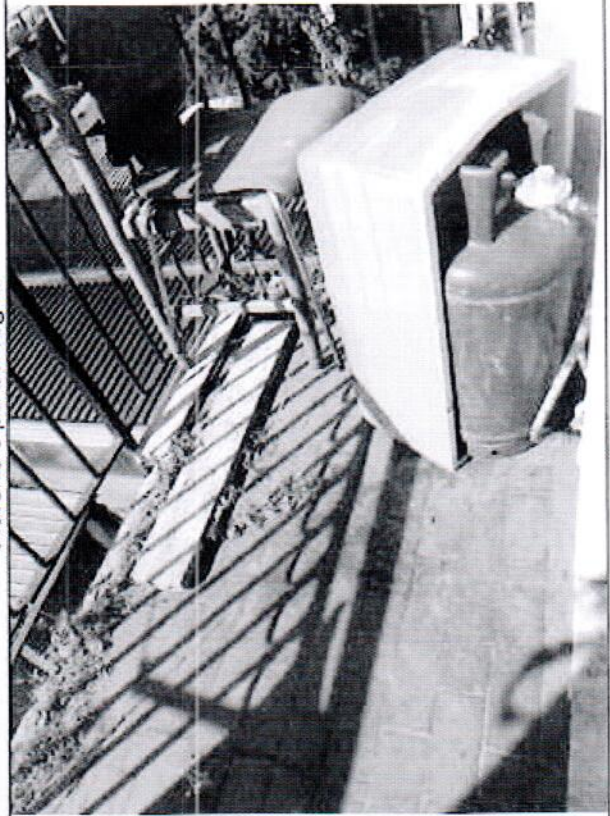
Pensili e rivestimento pareti angolo parete attrezzata a cucina u.i.



Foro a reazione gas



Piafone e pareti bagno



balcone



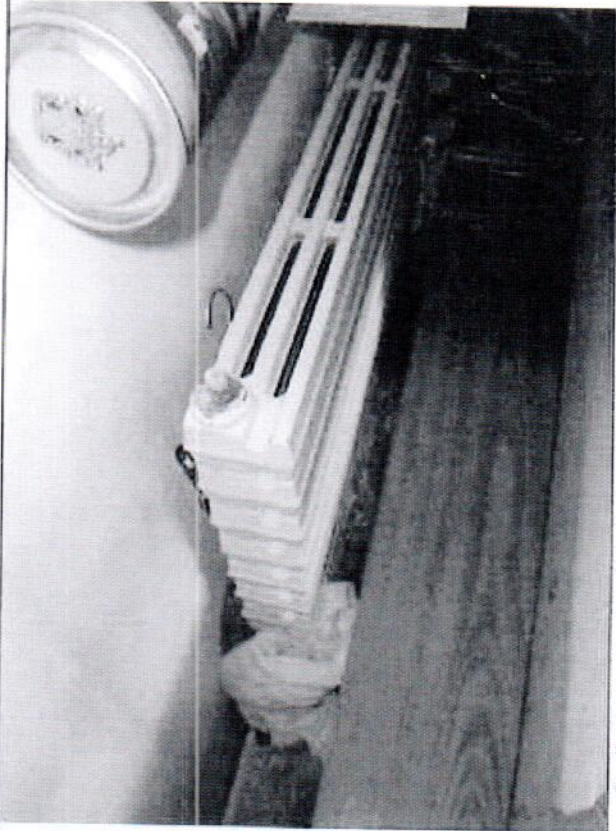
Bagno



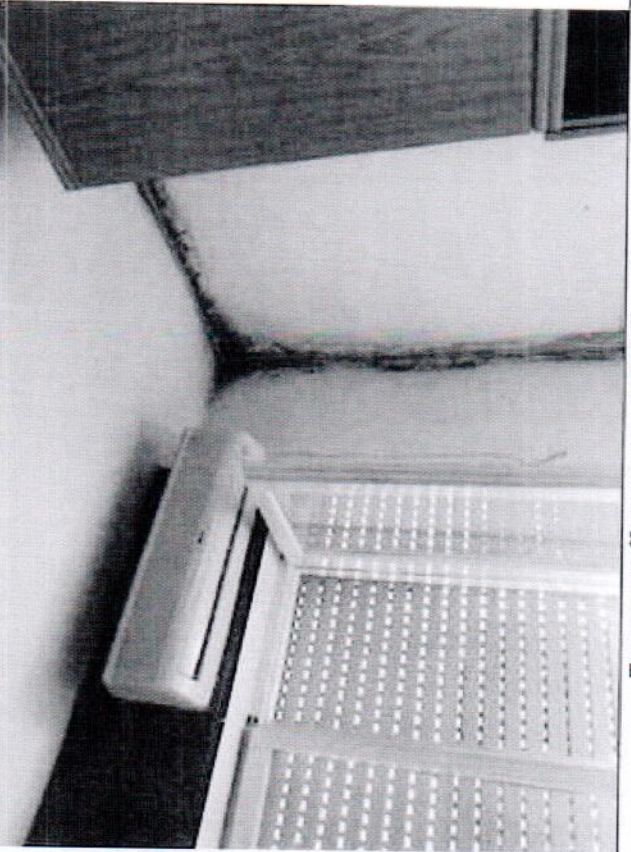
Balcone



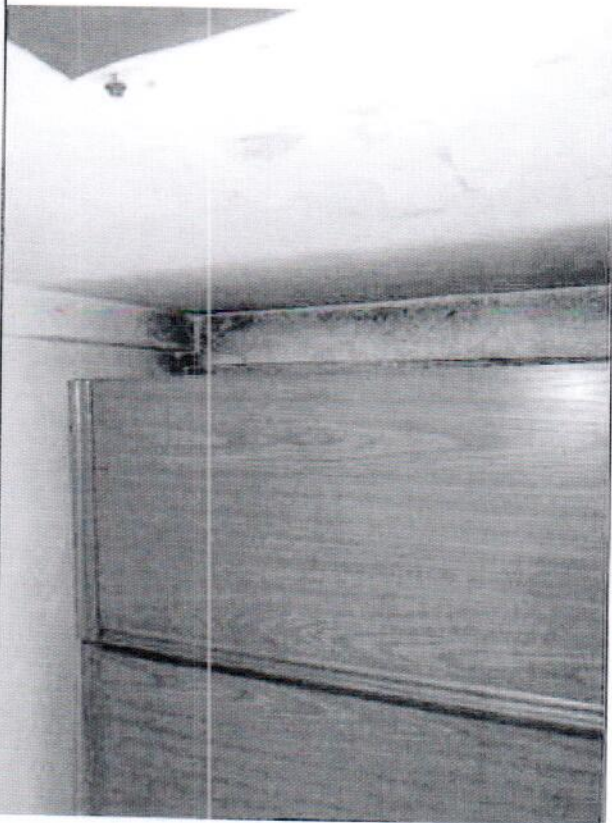
Vista interna u.i.



Radiatore vecchio impianto riscaldamento non più in funzione



Tracce muffa pareti e plafone interno u.i.



Tracce muffa pareti e plafone interno u.i.