



Vivaro Fig. 3 mapp. 319 - casa fronte strada

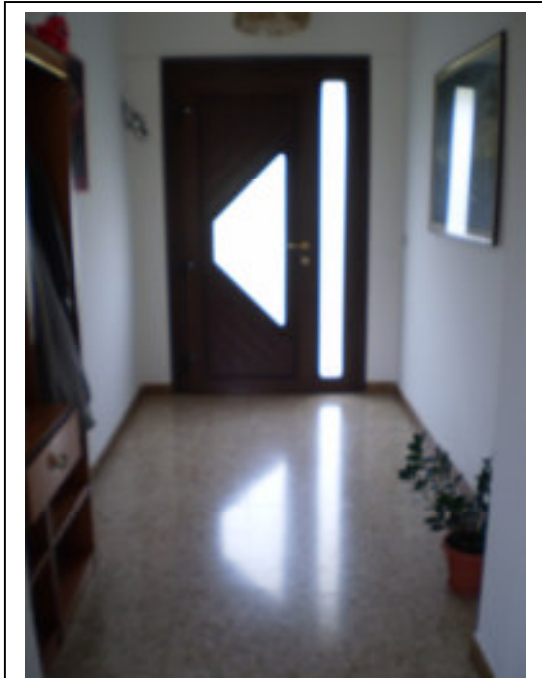


Vivaro Fig. 3 mapp. 319 - casa retro



Vivaro Fig. 3 mapp. 317 e 110

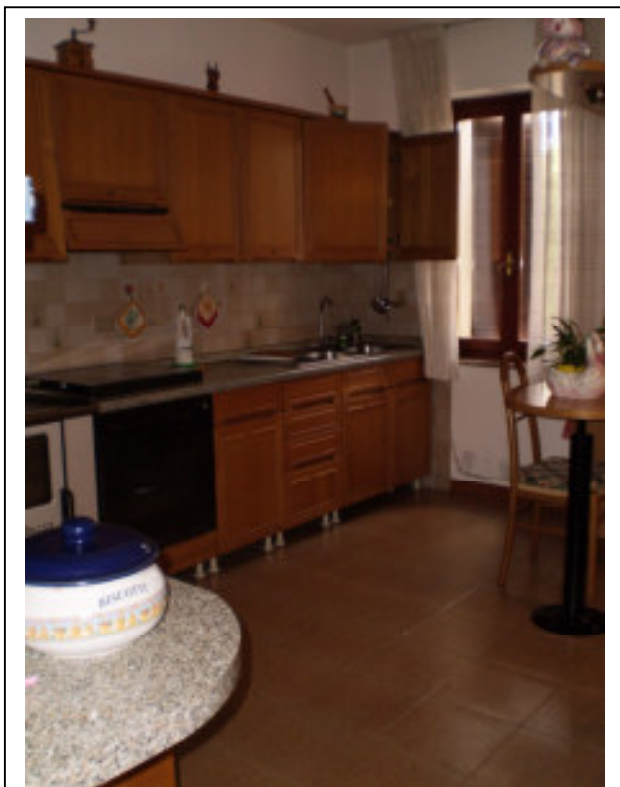
Vivaro Fig. 3 mapp. 319 Piano terra - parte ristrutturata



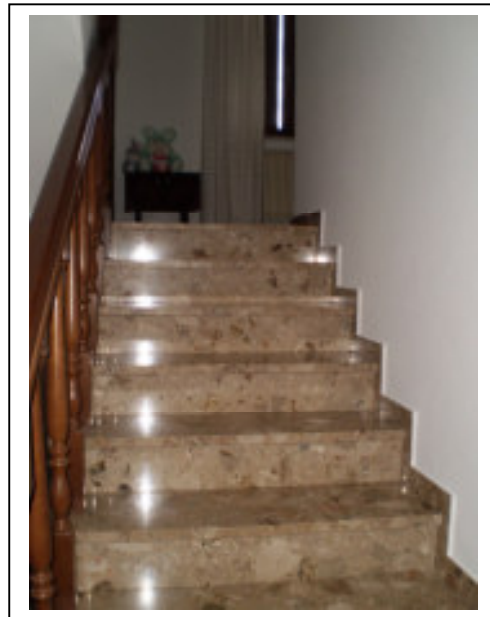
Ingresso

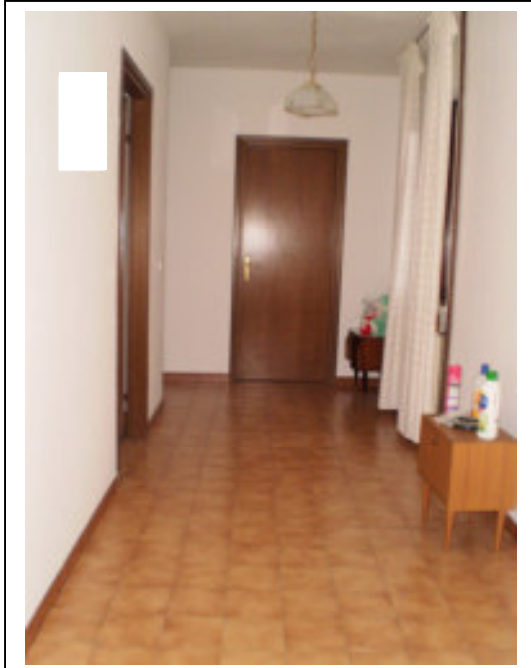


Corridoio

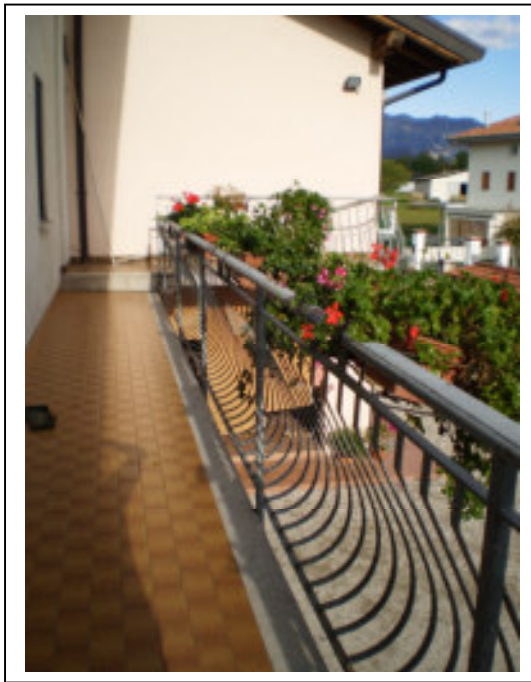


Cucina

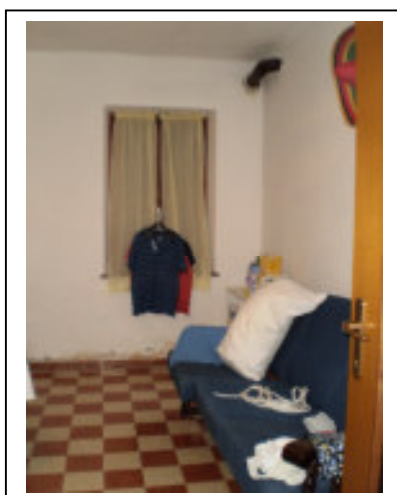
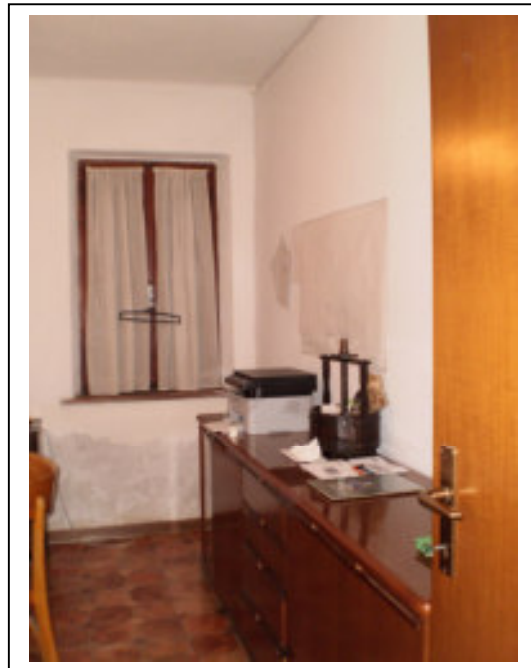
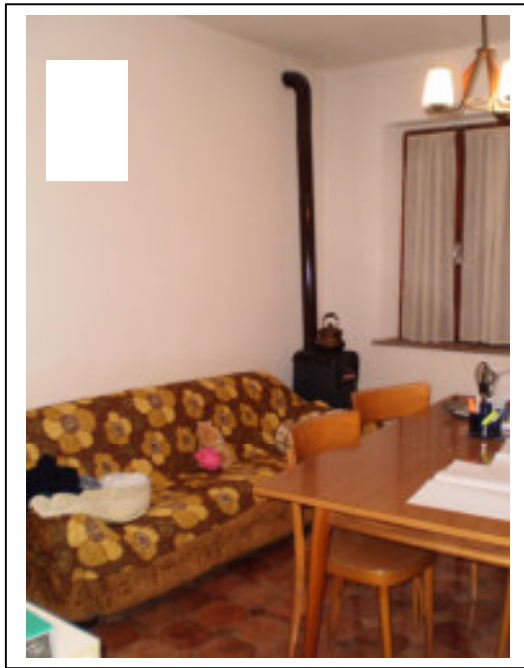




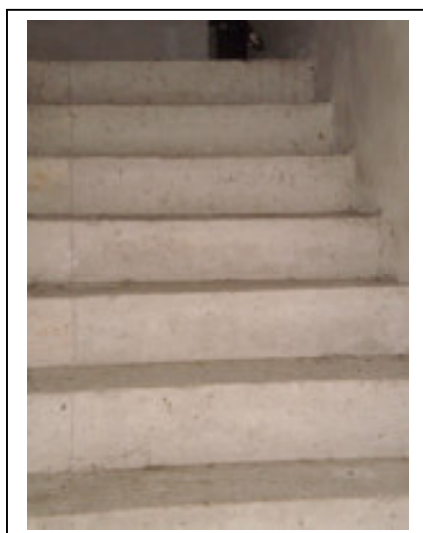
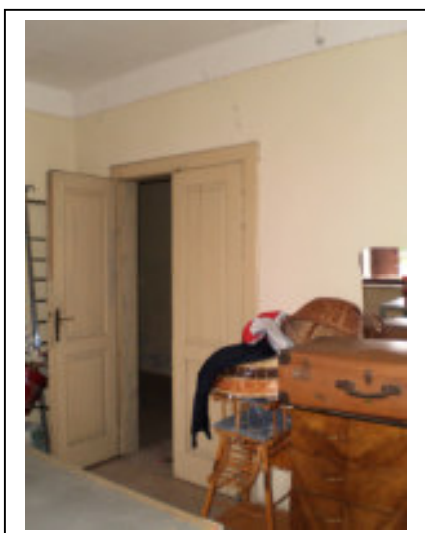
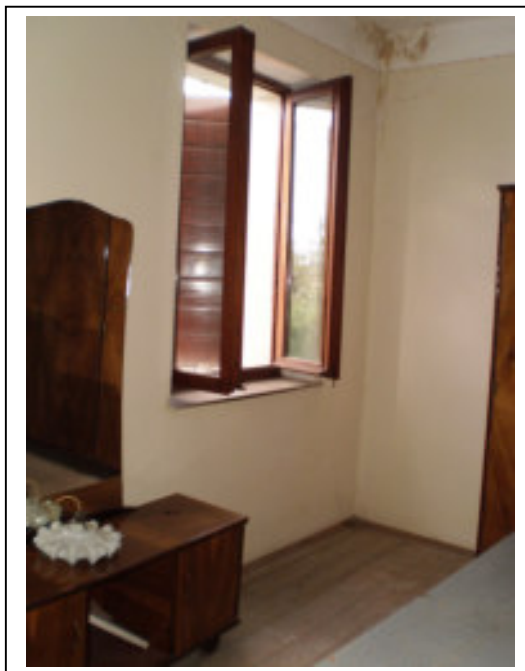
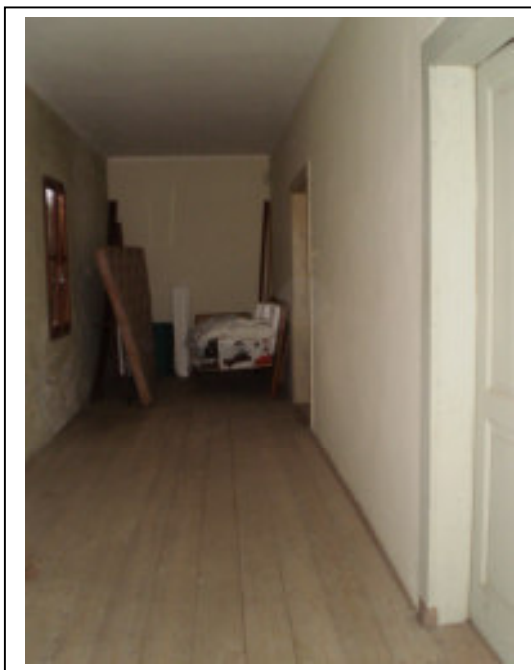
Corridoio



Vivaro Fig. 3 mapp. 319 - Piano terra - parte da ristrutturare



Vivaro Fig. 3 mapp. 319 - Piano primo - parte da ristrutturare



Vivaro Fig. 3 mapp. 319 - Piano secondo - soffitta



Tettoia