

TRIBUNALE DI PORDENONE
E.I. 29/2015

GIUDICE ESECUTIVO: Dr. Francesco Petrucco Toffolo

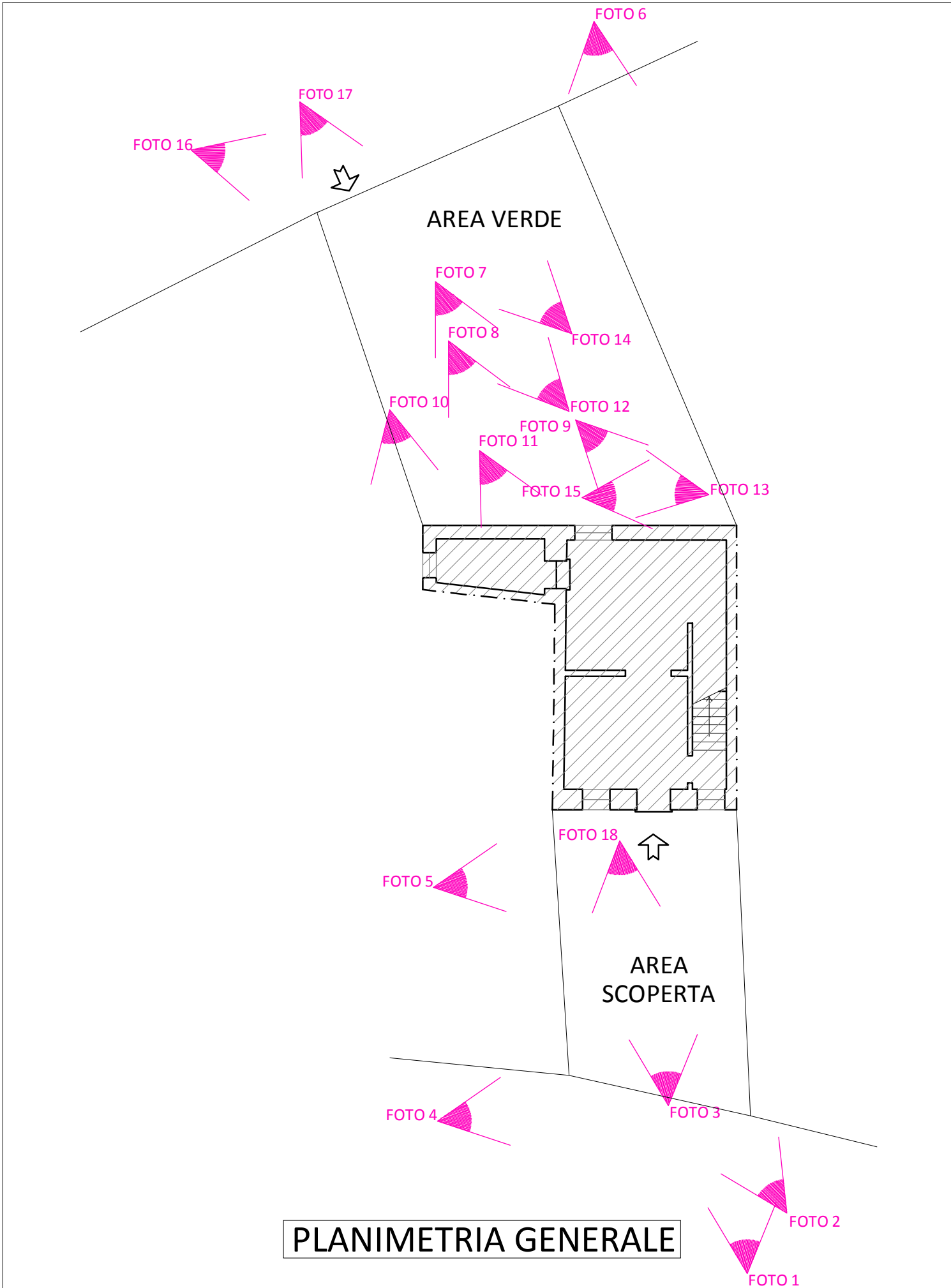
C.T.U.: Geom. Angelo Mirolo-Via Di Mezzo, n.6, Spilimbergo (PN)-

CREDITORE PROCEDENTE: ITALFONDIARIO S.P.A.

DEBITORE ESECUTATO:

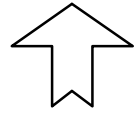
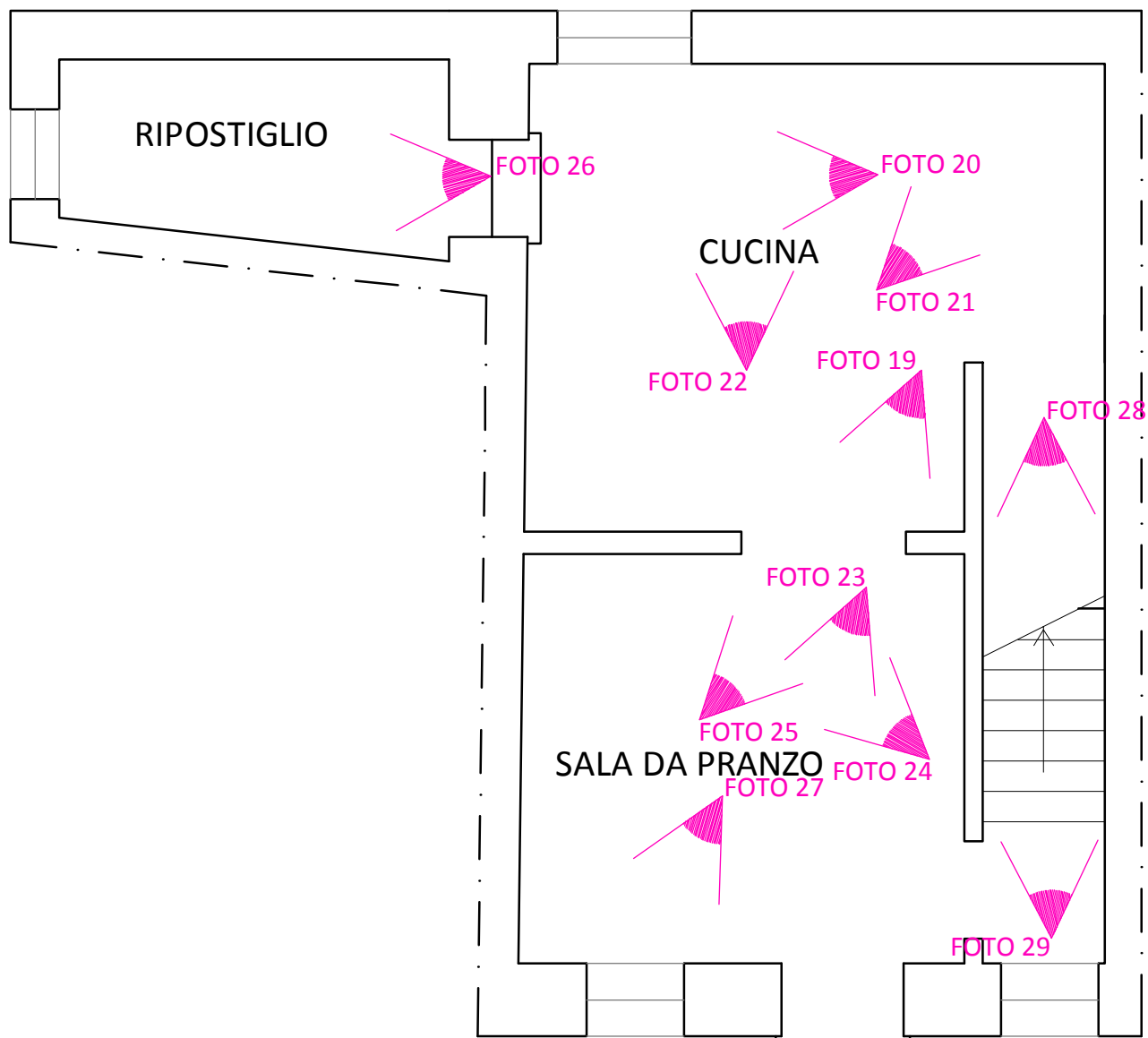
Documenti allegati:

- a) Schema punti di ripresa fotografica;*
- b) Documentazione Fotografica interna ed esterna dell'intero compendio (Corpo A e Corpo B).*



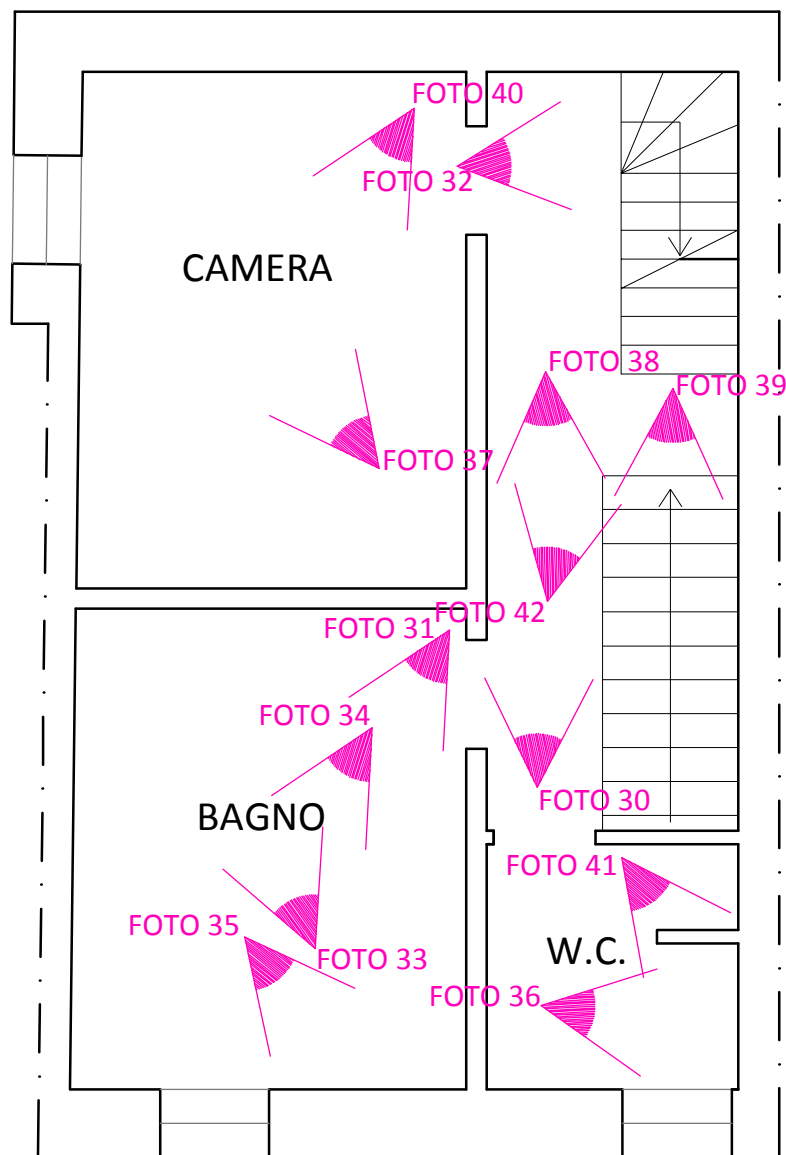
Immobile sito in Caneva (PN), Via Pedemontana n.3
 Fig. 21 Map. 339

CORPO A

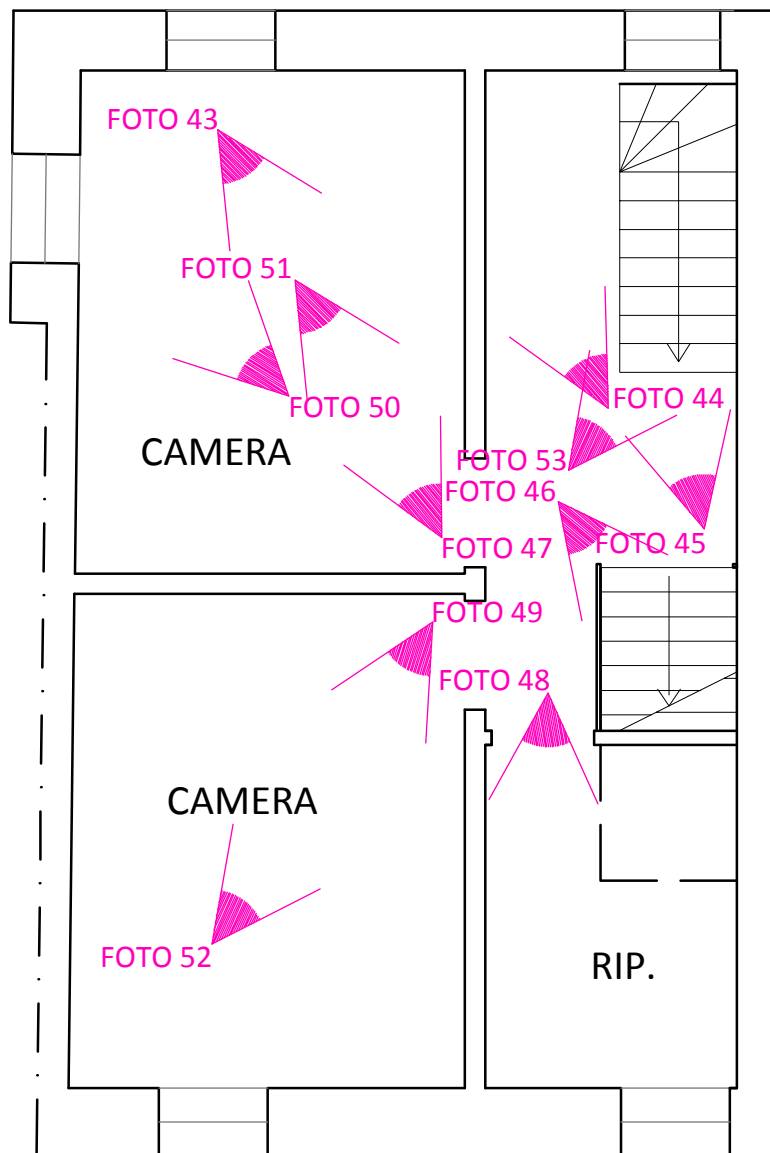


ENTRATA

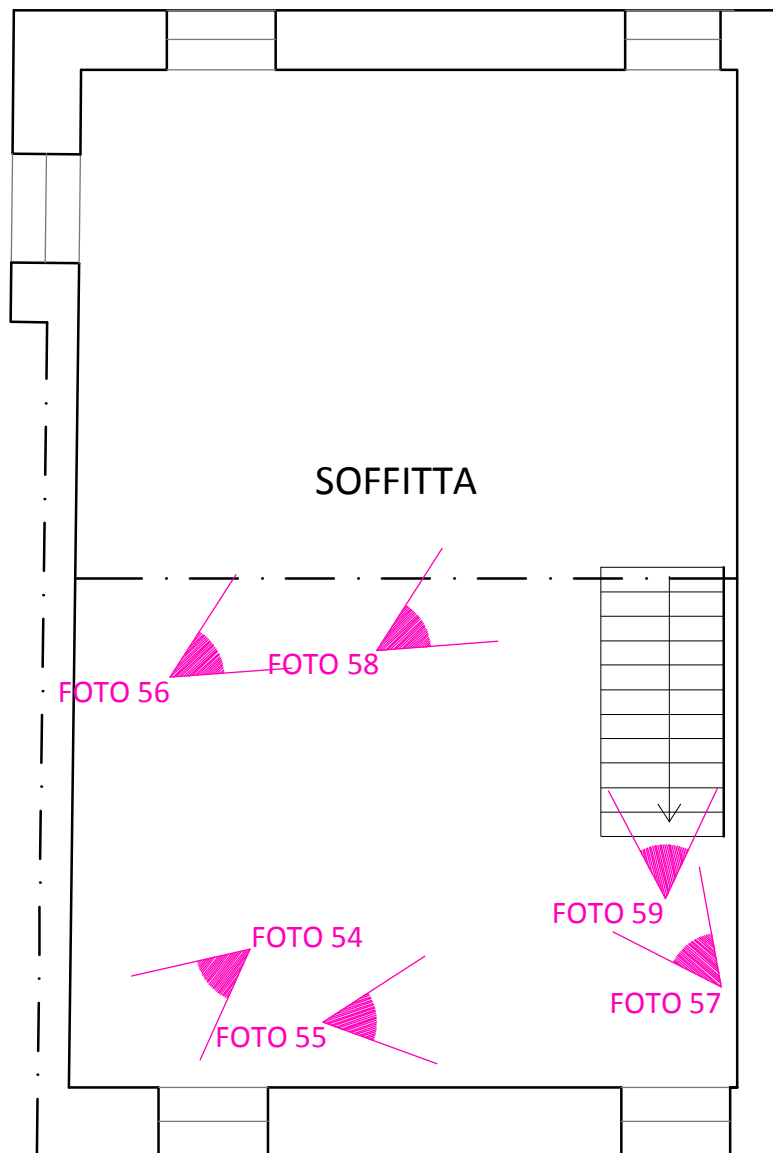
PIANO TERRA



PIANO PRIMO



PIANO SECONDO



PIANO TERZO

FOTO 70



FOTO 61

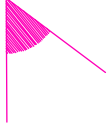


FOTO 60

FOTO 71

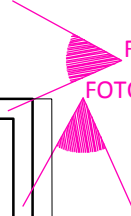


FOTO 62

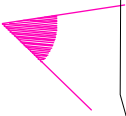


FOTO 67



FOTO 66



RICOVERO
ATTREZZI

FOTO 63

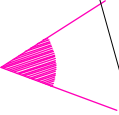


FOTO 68



RIPOSTIGLIO

FOTO 69

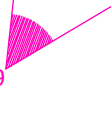
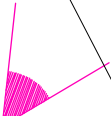


FOTO 64



AREA
SCOPERTA

FOTO 65



Immobile sito in Caneva (PN), Via Pedemontana
Fig. 21 Map. 650

CORPO B

FOTO AEREA
-Individuazione fabbricati-

+



CANEVA (PN) – Via Pedemontana

CORPO A



FOTO 1



FOTO 2



FOTO 3



FOTO 4



FOTO 5



FOTO 6



FOTO 7



FOTO 8



FOTO 9



FOTO 10



FOTO 11



FOTO 12



FOTO 13

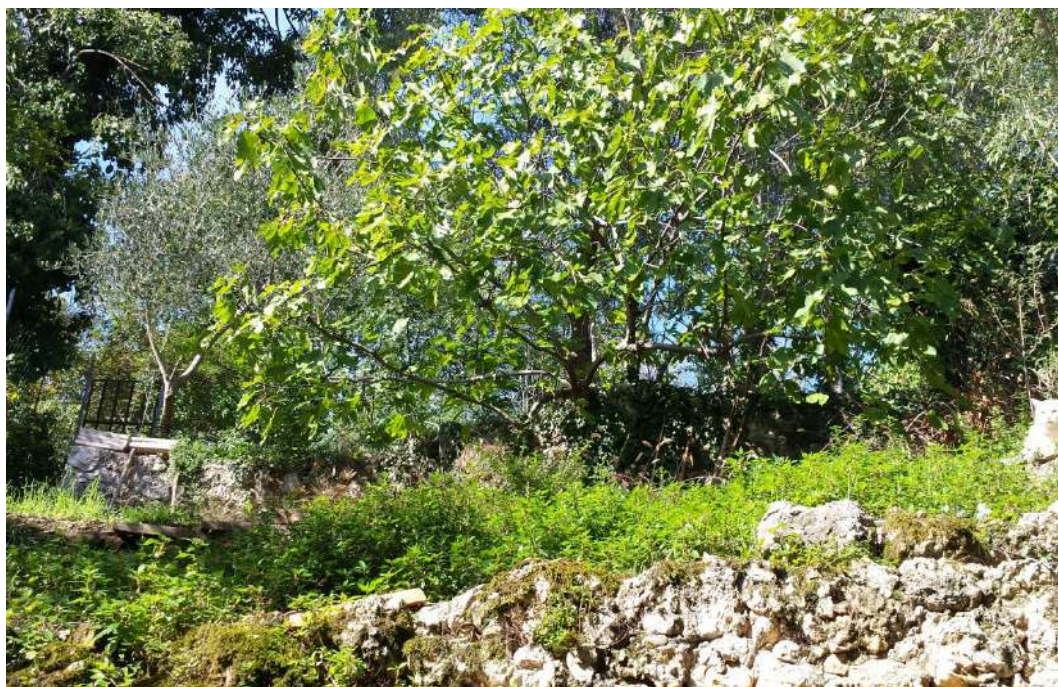


FOTO 14



FOTO 15



FOTO 16



FOTO 17



FOTO 18

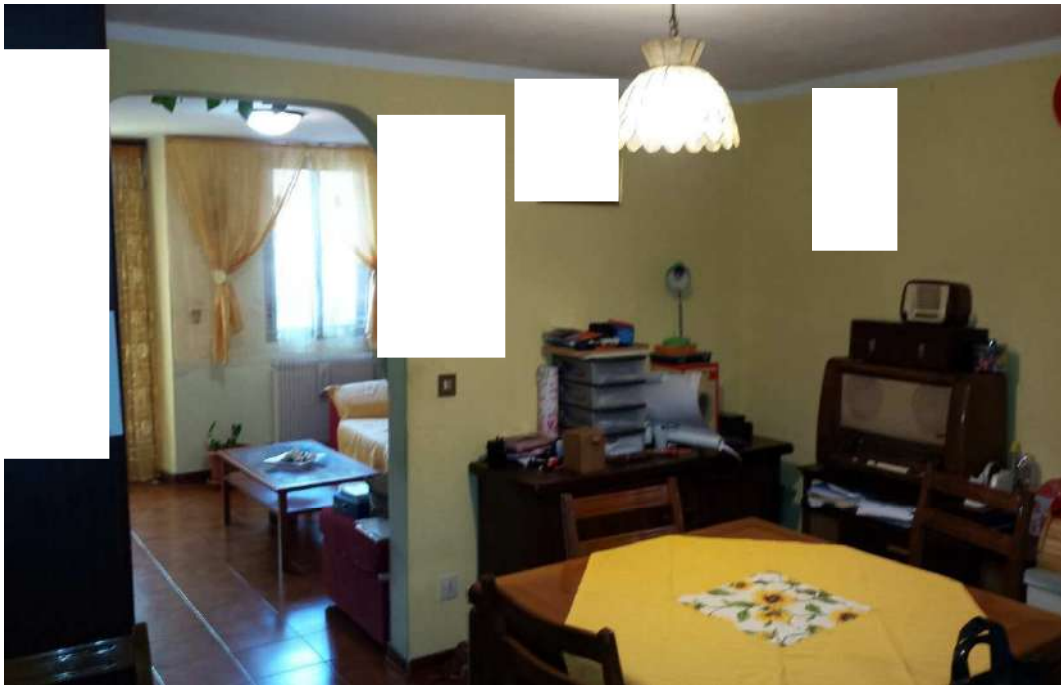


FOTO 19



FOTO 20



FOTO 21



FOTO 22



FOTO 23



FOTO 24



FOTO 25



FOTO 26



FOTO 27



FOTO 28



FOTO 29



FOTO 30



FOTO 31

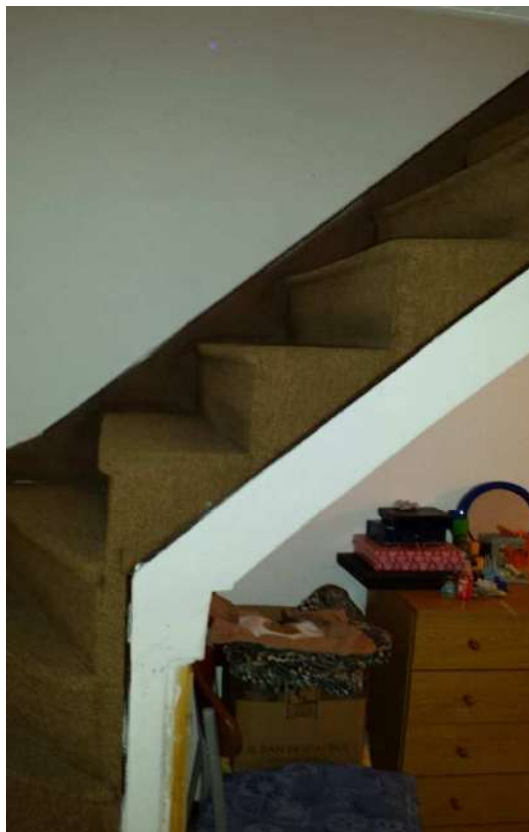


FOTO 32



FOTO 33



FOTO 34



FOTO 35



FOTO 36



FOTO 37



FOTO 38



FOTO 39

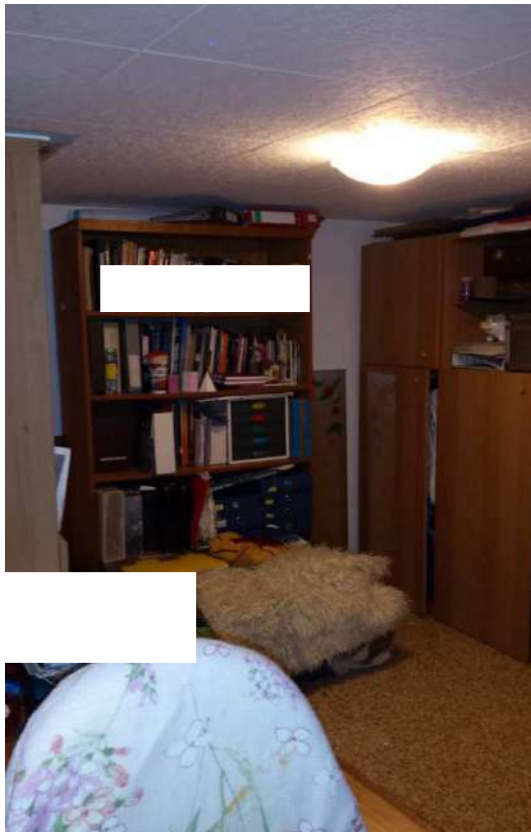


FOTO 40



FOTO 41



FOTO 42

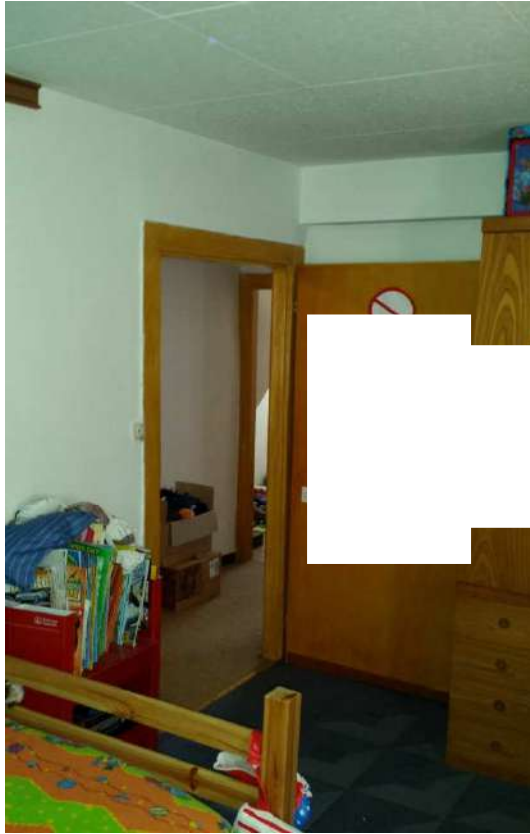


FOTO 43



FOTO 44



FOTO 45



FOTO 46



FOTO 47

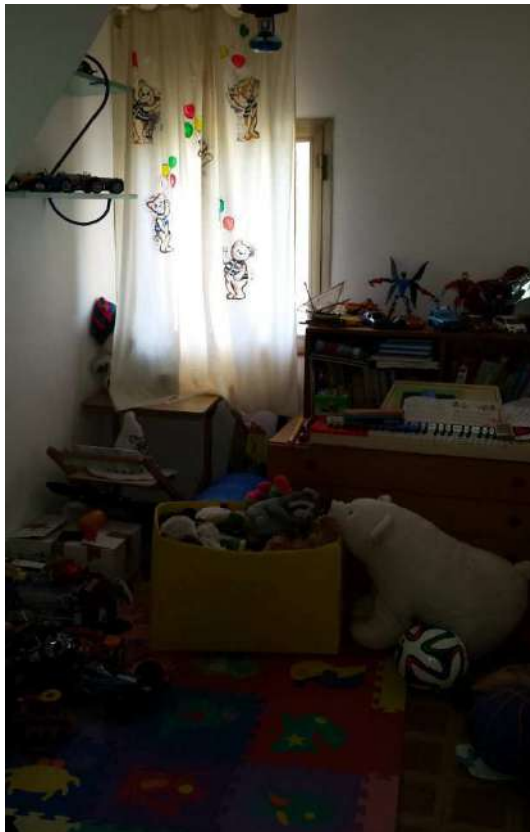


FOTO 48



FOTO 49



FOTO 50



FOTO 51



FOTO 52

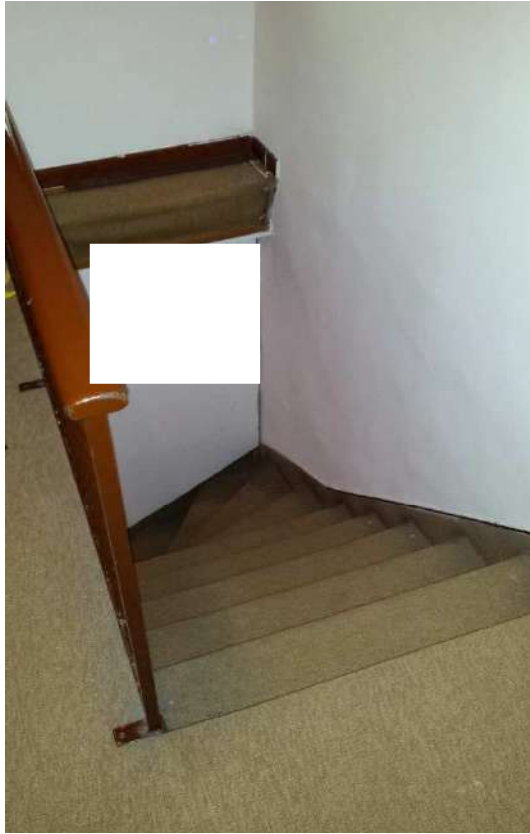


FOTO 53



FOTO 54



FOTO 55



FOTO 56



FOTO 57



FOTO 58



FOTO 59

CORPO B



FOTO 60



FOTO 61



FOTO 62



FOTO 63



FOTO 64



FOTO 65



FOTO 66



FOTO 67



FOTO 68



FOTO 69



FOTO 70



FOTO 71