

Vista assometrica



Foto 1. Prospetto su via Canazza



Foto 2. Prospetto su cortile

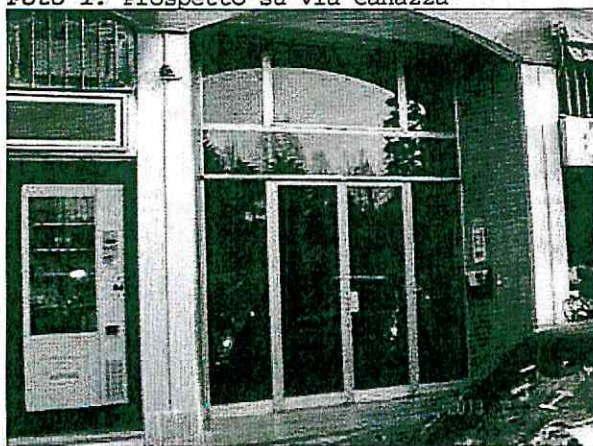


Foto 3. Portone d'ingresso



Foto 4. Androne



Foto 5. Vano scale

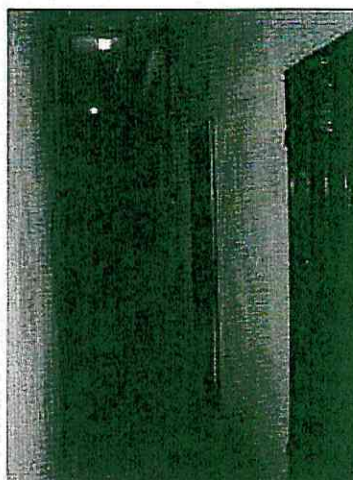


Foto 6. Corridoio accesso cantine



Foto 7. Edificio box



Foto 8. Accesso carraio

Unità immobiliare al sub.7



Foto 1. Porta d'accesso all'appartamento

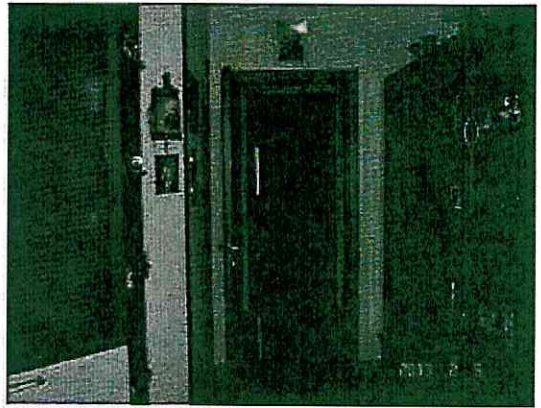


Foto 2. Ingresso



Foto 3. Ingresso

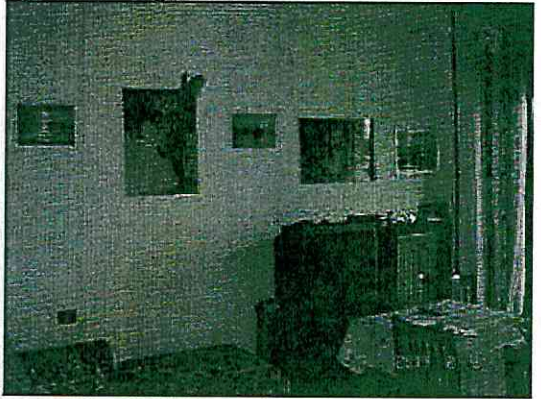


Foto 4. Soggiorno/cucina



Foto 5. Soggiorno/cucina



Foto 6. Corridoio

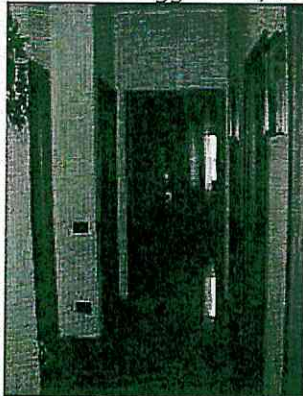


Foto 7. Corridoio

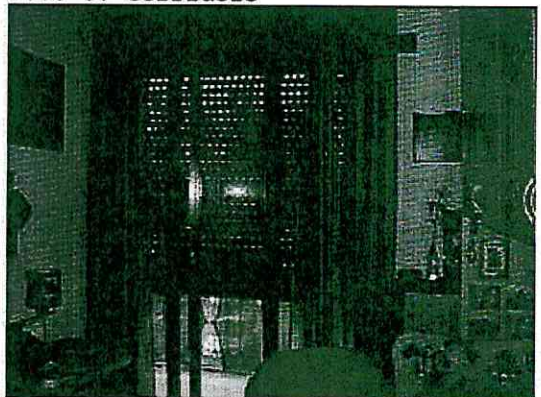


Foto 8. Camera 1

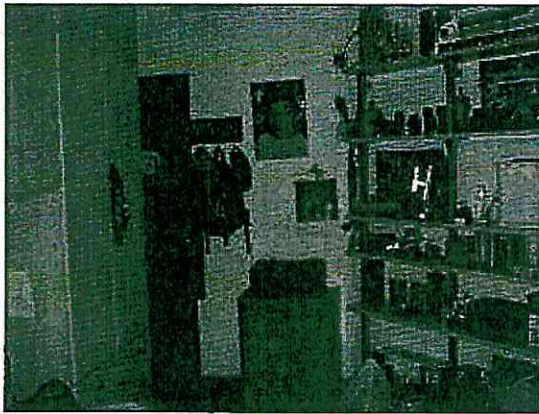


Foto 9. Camera 1

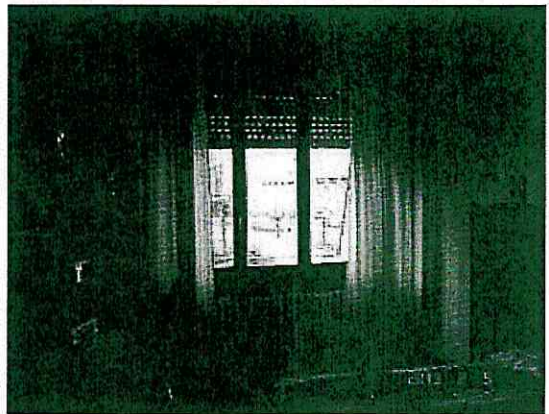


Foto 10. Camera 2



Foto 11. Camera 2

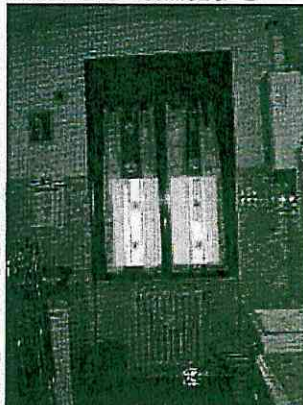


Foto 12. Lavanderia

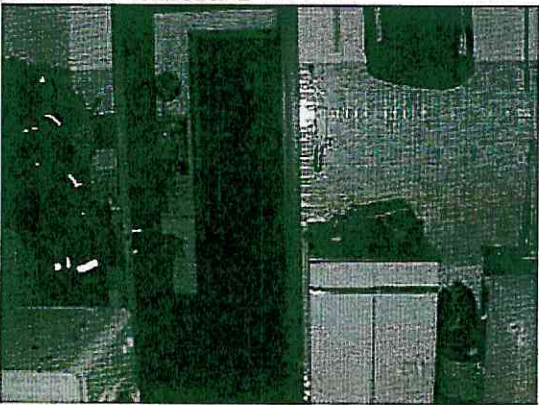


Foto 13. Lavanderia

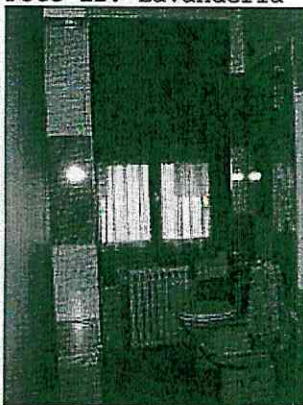


Foto 14. Bagno

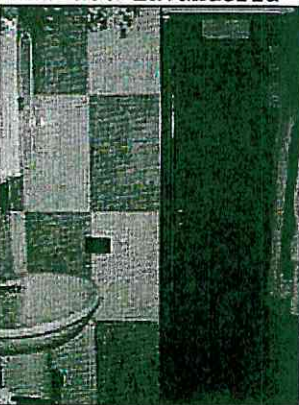


Foto 15. Bagno



Foto 16. Camera 3



Foto 17. Camera 3

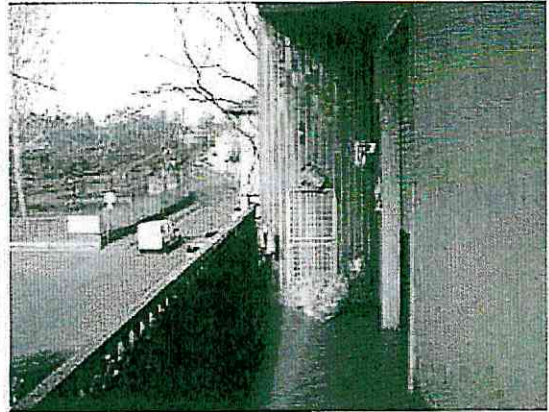


Foto 18. Balcone

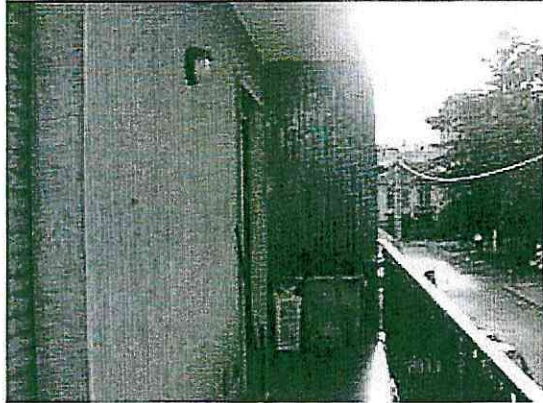


Foto 19. Balcone



Foto 20. Cantina

Unità immobiliare al sub.702 (di cui il 105 è porzione al 50%) (box)

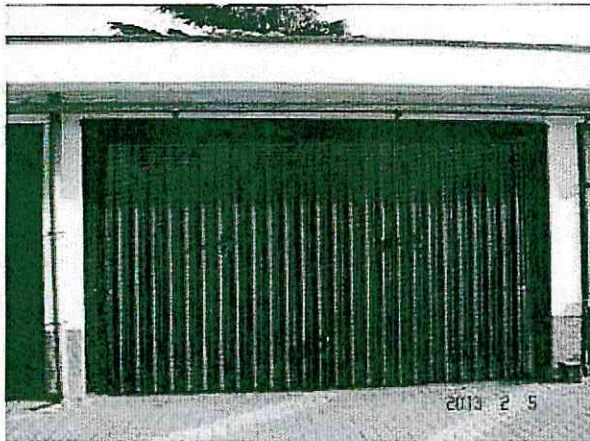


Foto 1. Portone d'accesso al box



Foto 2. Box