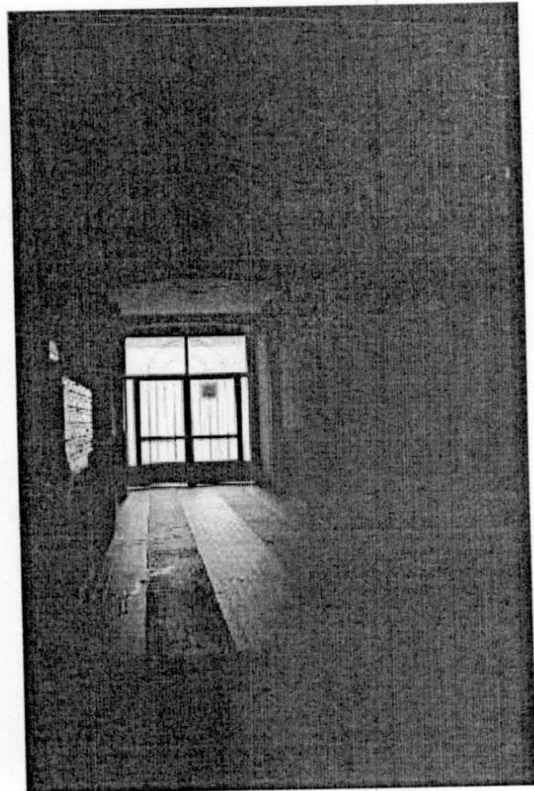




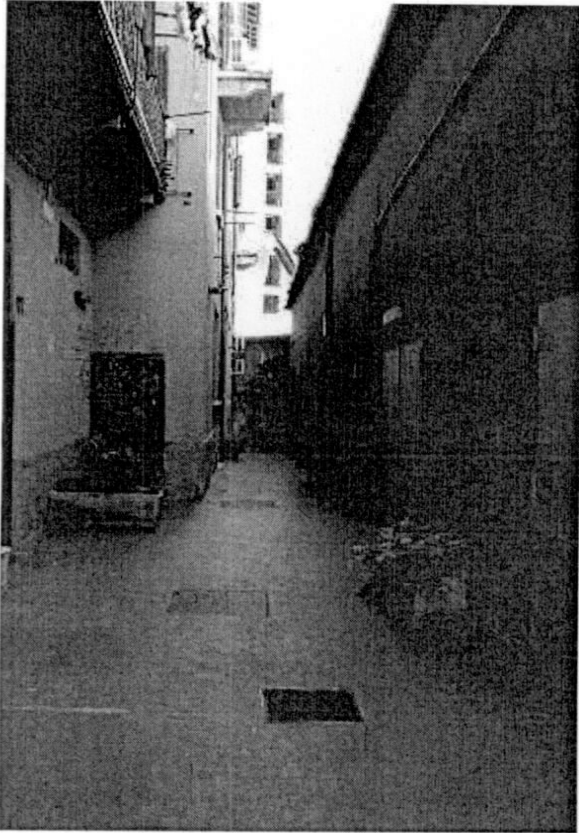
Viste edificio da Viale Monza



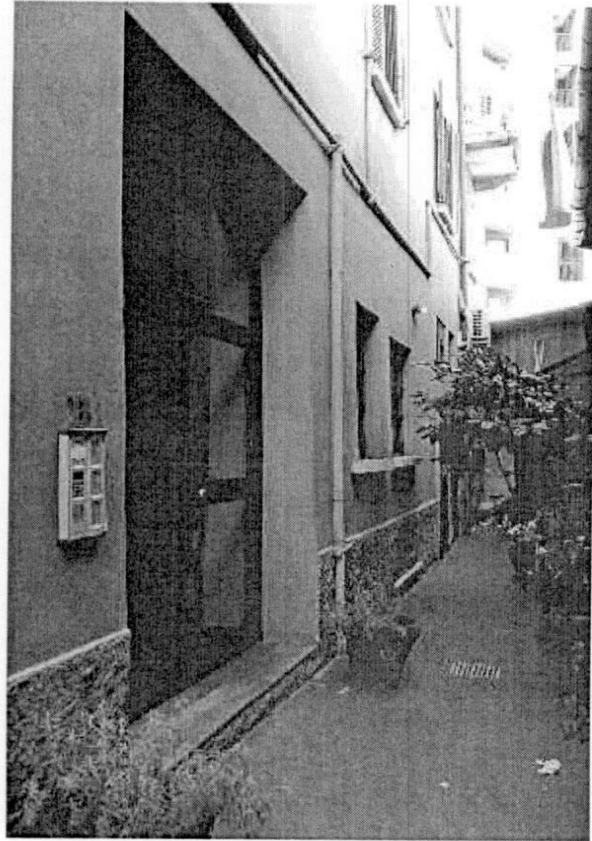
Viste androne condominiale

ALBO DEGLI ARCHITETTI DI MILANO N. 8986
ALBO C.T.U. TRIBUNALE DI MILANO N. 13612





Vista accesso alla scala B



Vista accesso alla scala B



Vista cortile zona portineria



Vista vano scale

ALBO DEGLI ARCHITETTI DI MILANO N. 8986
ALBO C.T.U. TRIBUNALE DI MILANO N. 13612

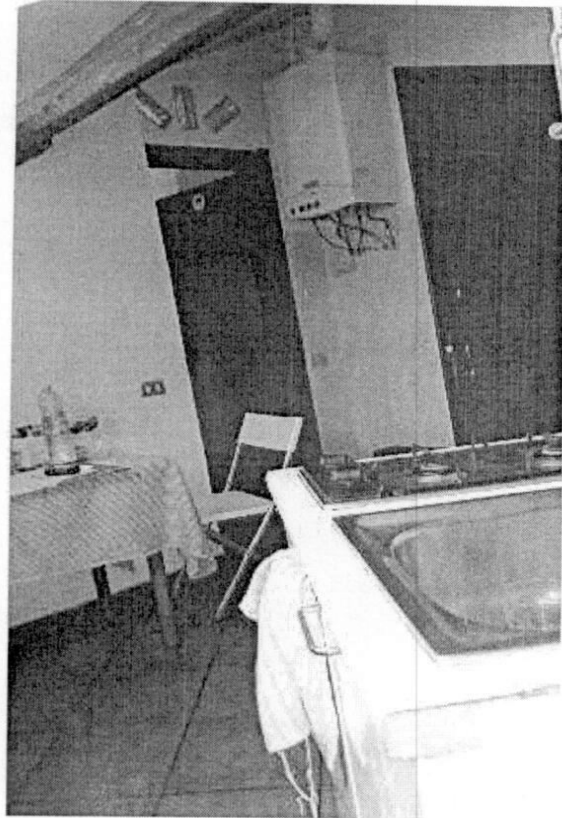
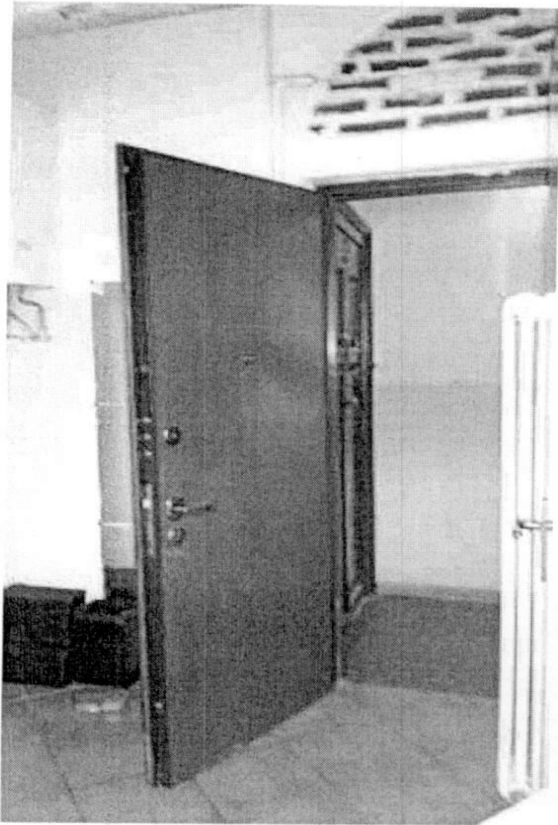


Viste cortile

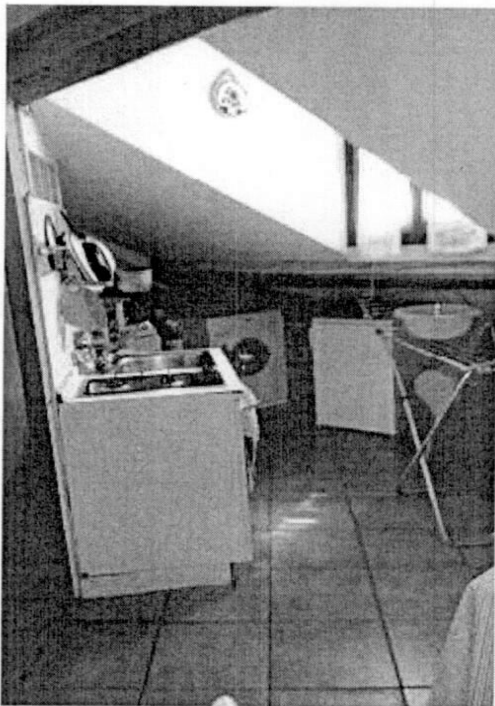


Viste pianerottolo d'accesso piano V sottotetto



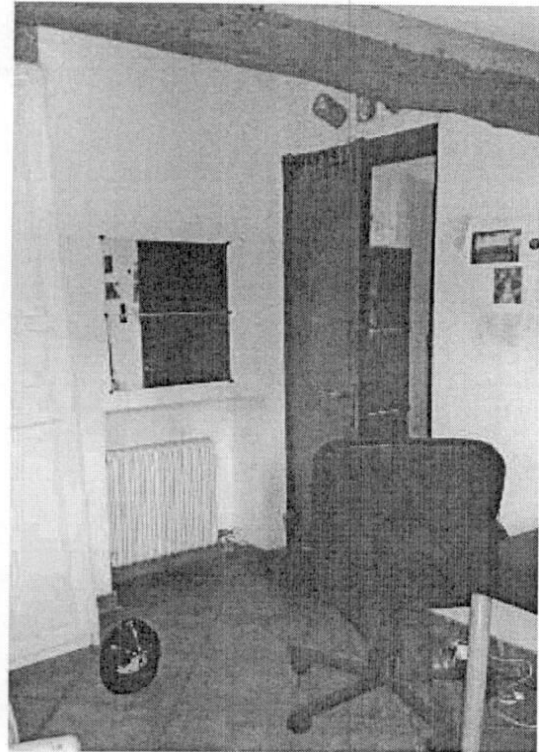
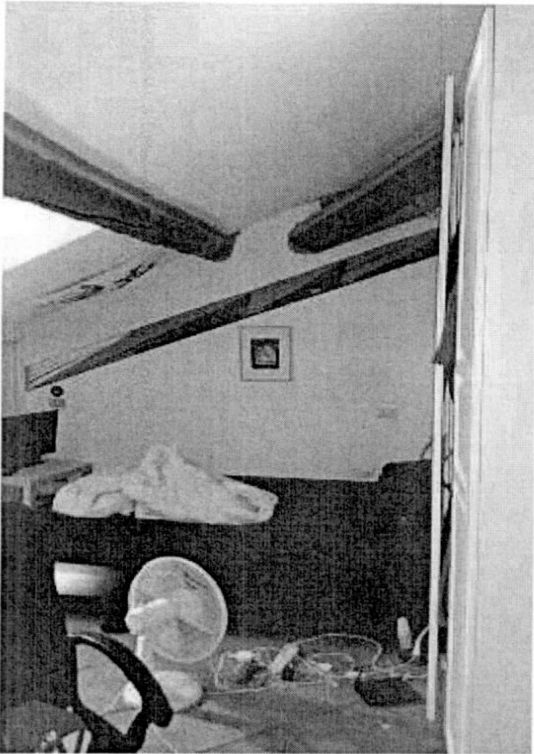


Viste ingresso/soggiorno

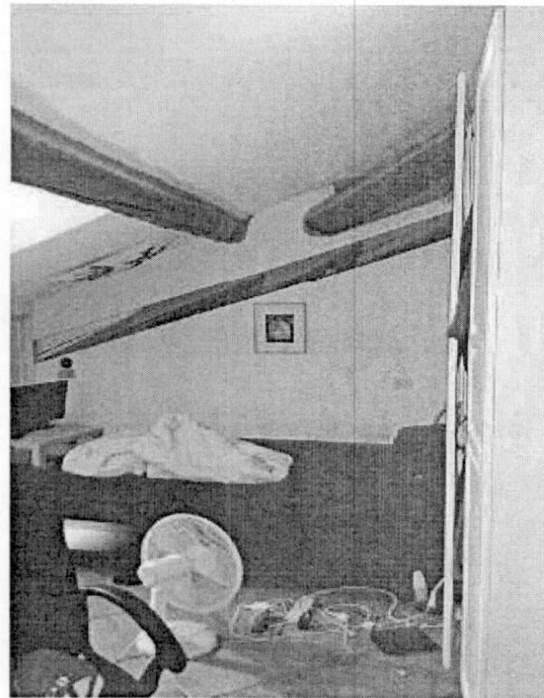
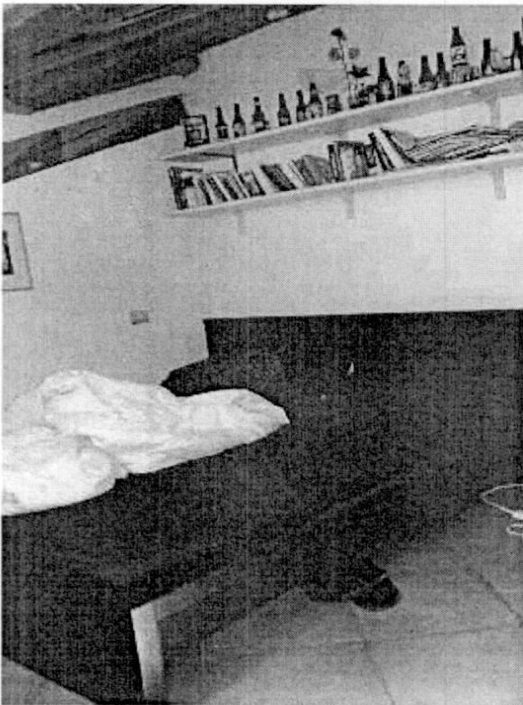


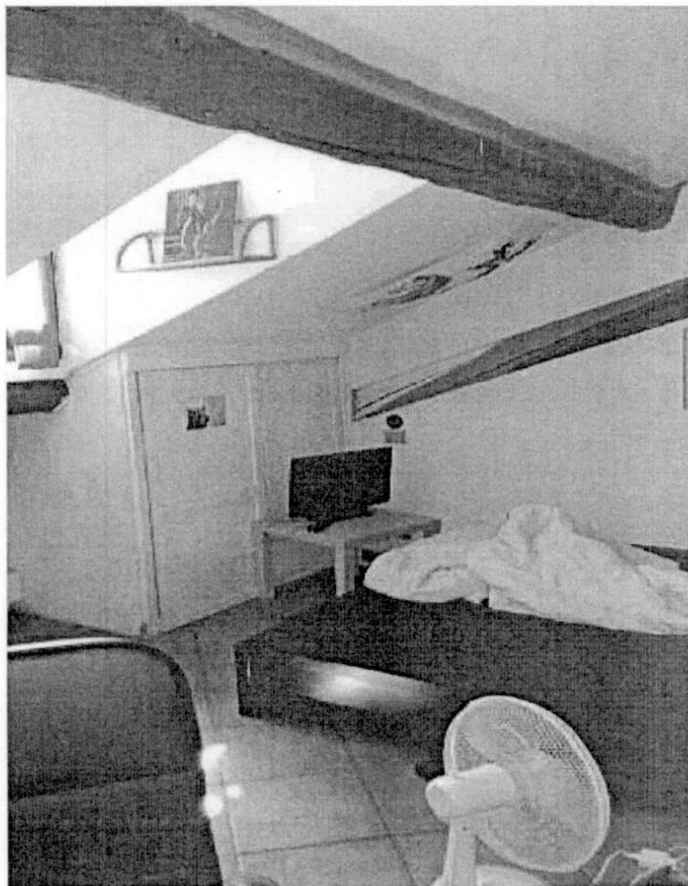
ALBO DEGLI ARCHITETTI DI MILANO N. 8986
ALBO C.T.U. TRIBUNALE DI MILANO N. 13612





Viste camera

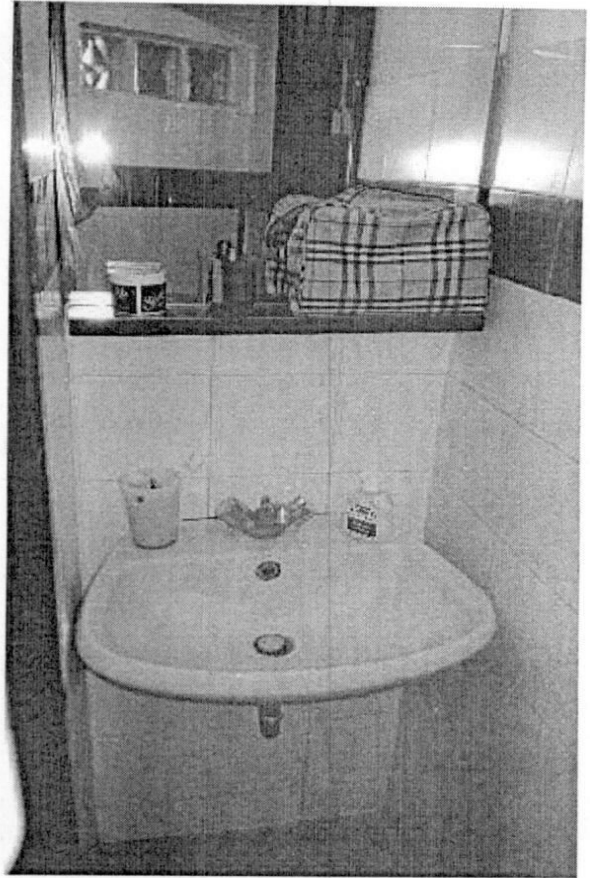
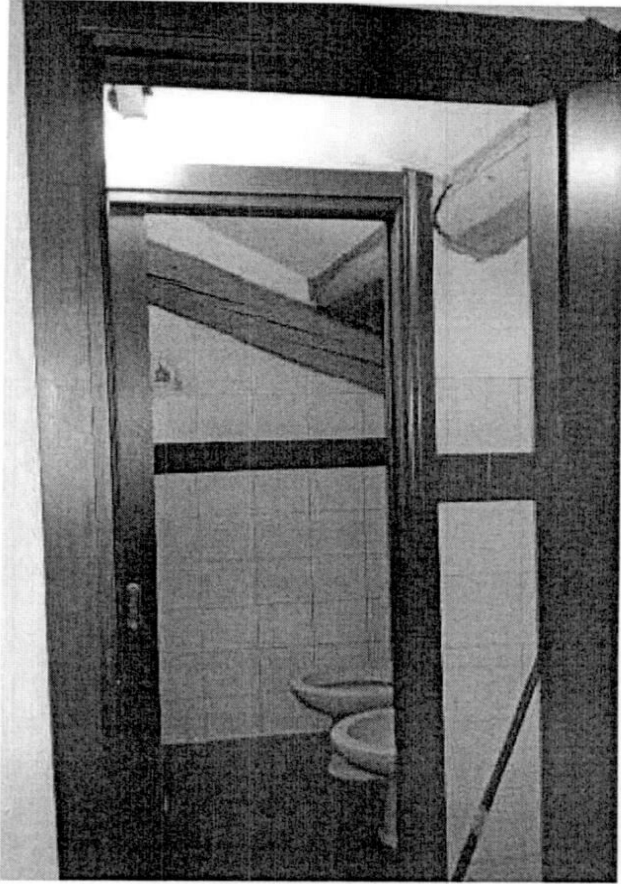




Viste camera

ALBO DEGLI ARCHITETTI DI MILANO N. 8986
ALBO C.T.U. TRIBUNALE DI MILANO N. 13612





Viste bagno





Vista bagno



Viste accesso cantine





Vista porta cantina

