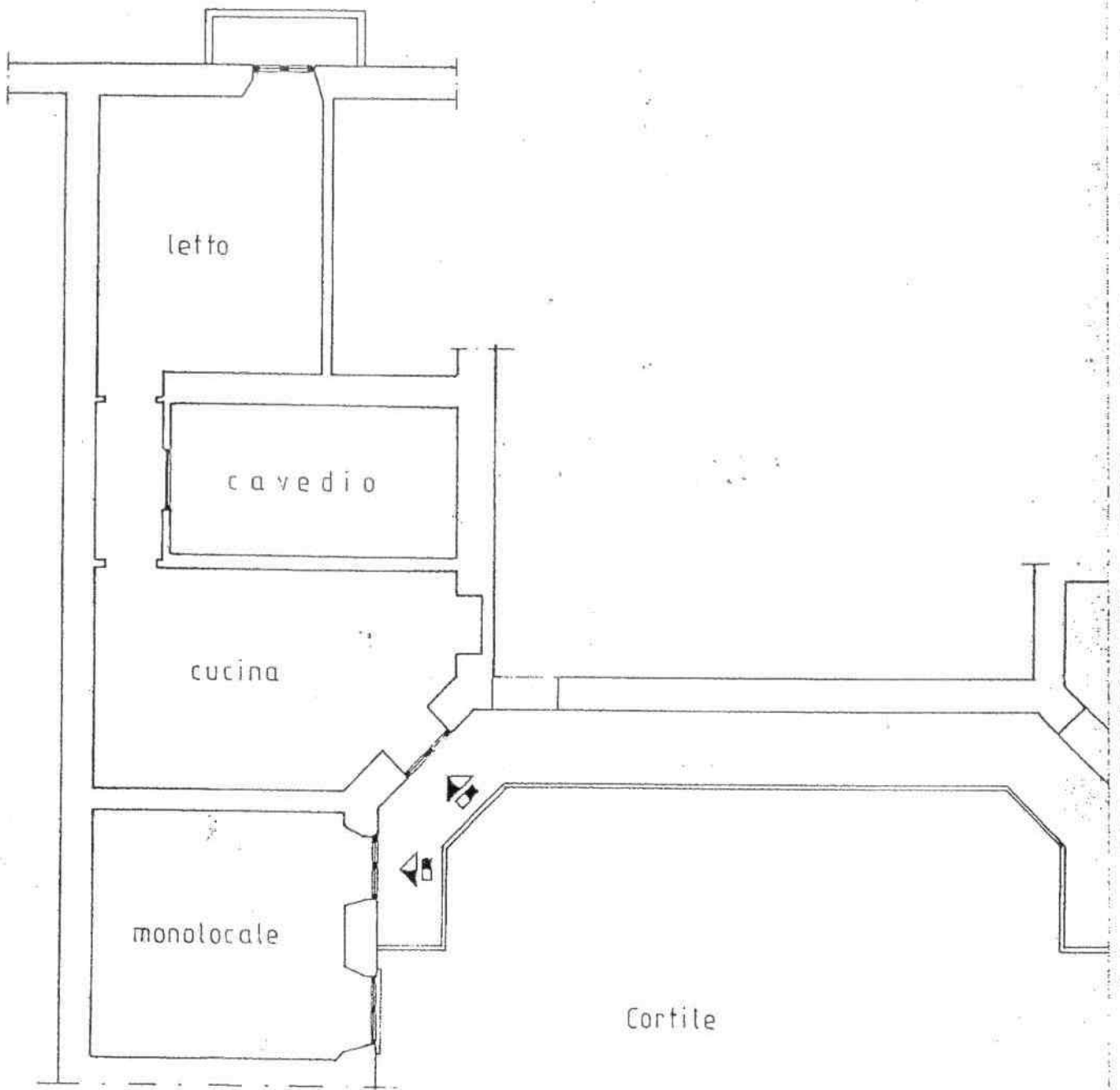
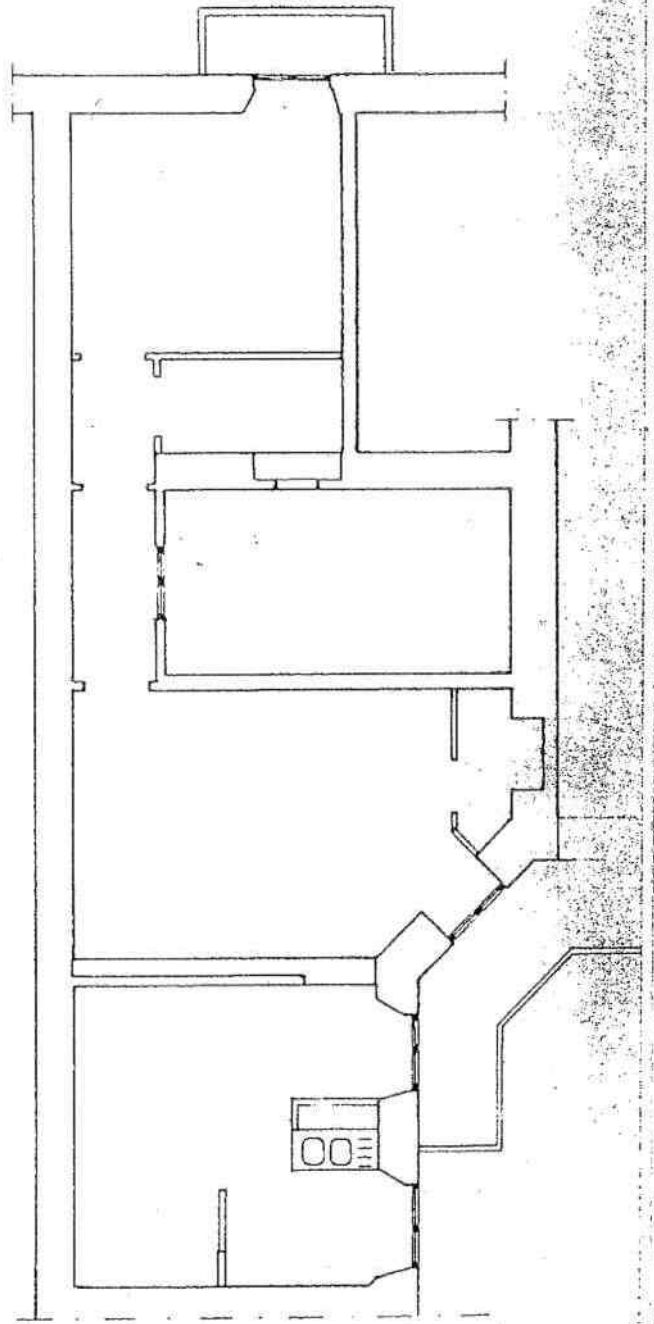
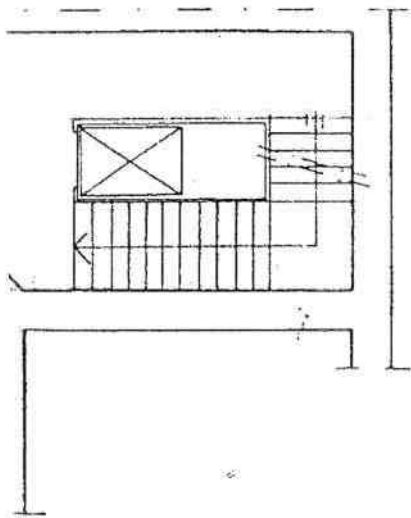


Via P. CRESPI



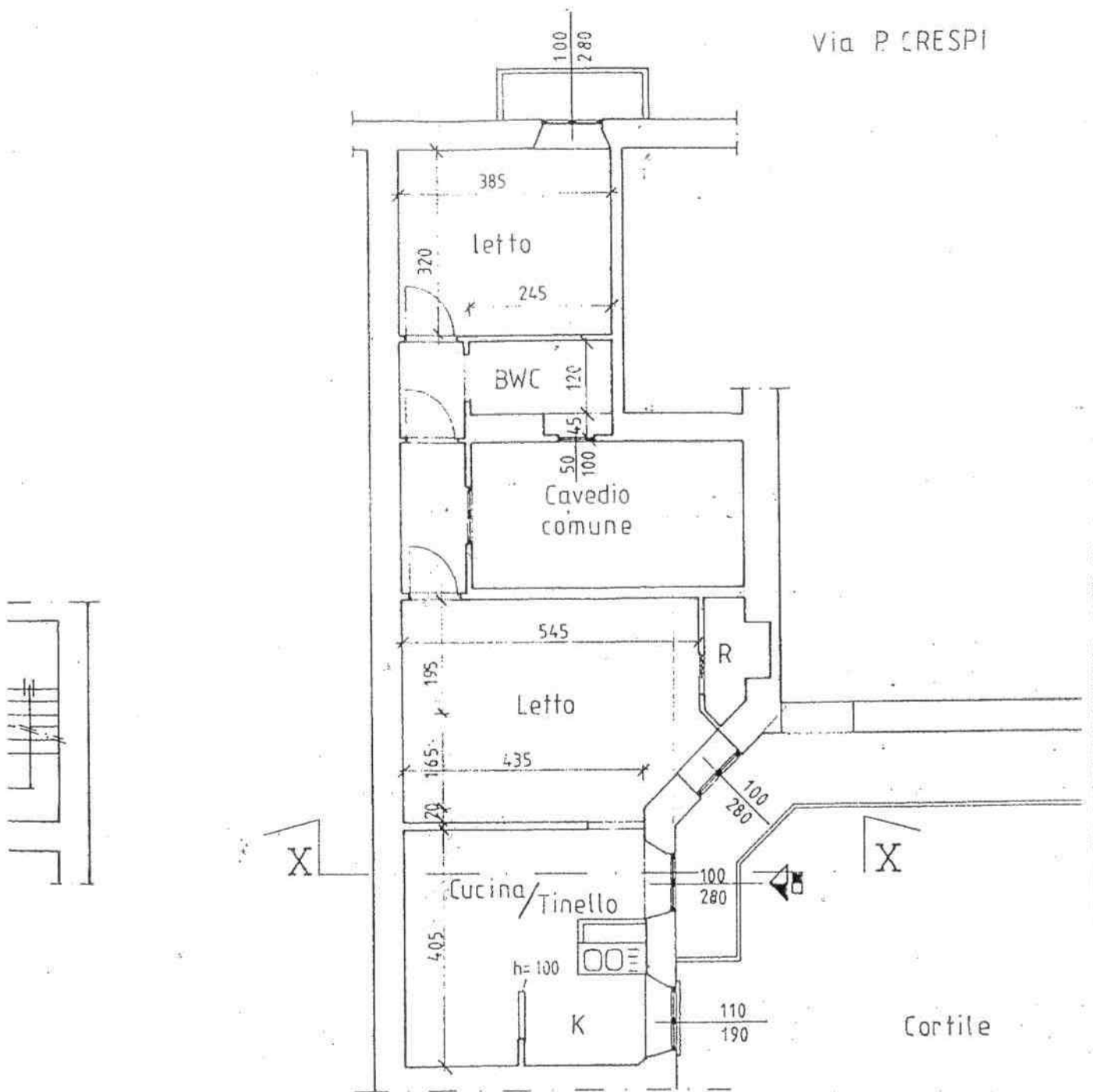
PIANTA PIANO SECONDO (stato di fatto)

Via



PIANTA PIANO SECONO

Via P. CRESPI



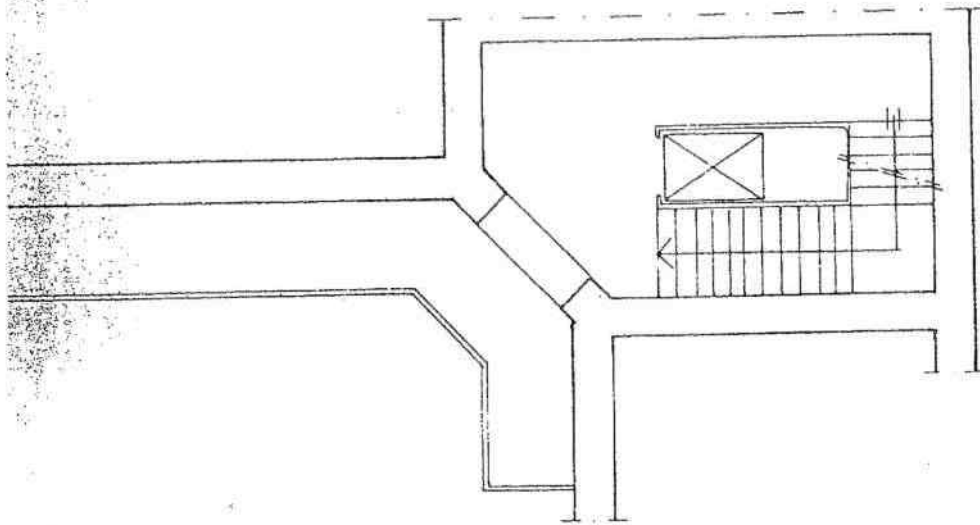
PIANTA PIANO SECONDO (soluzione f)



DEMOLIZIONE

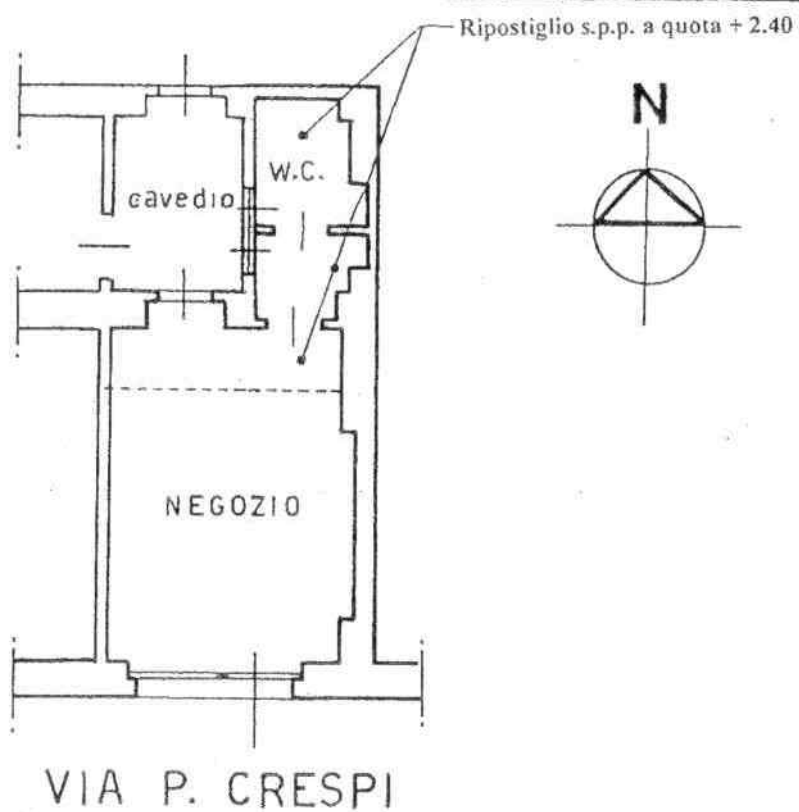


COSTRUZIONE



ortile

(modifiche)

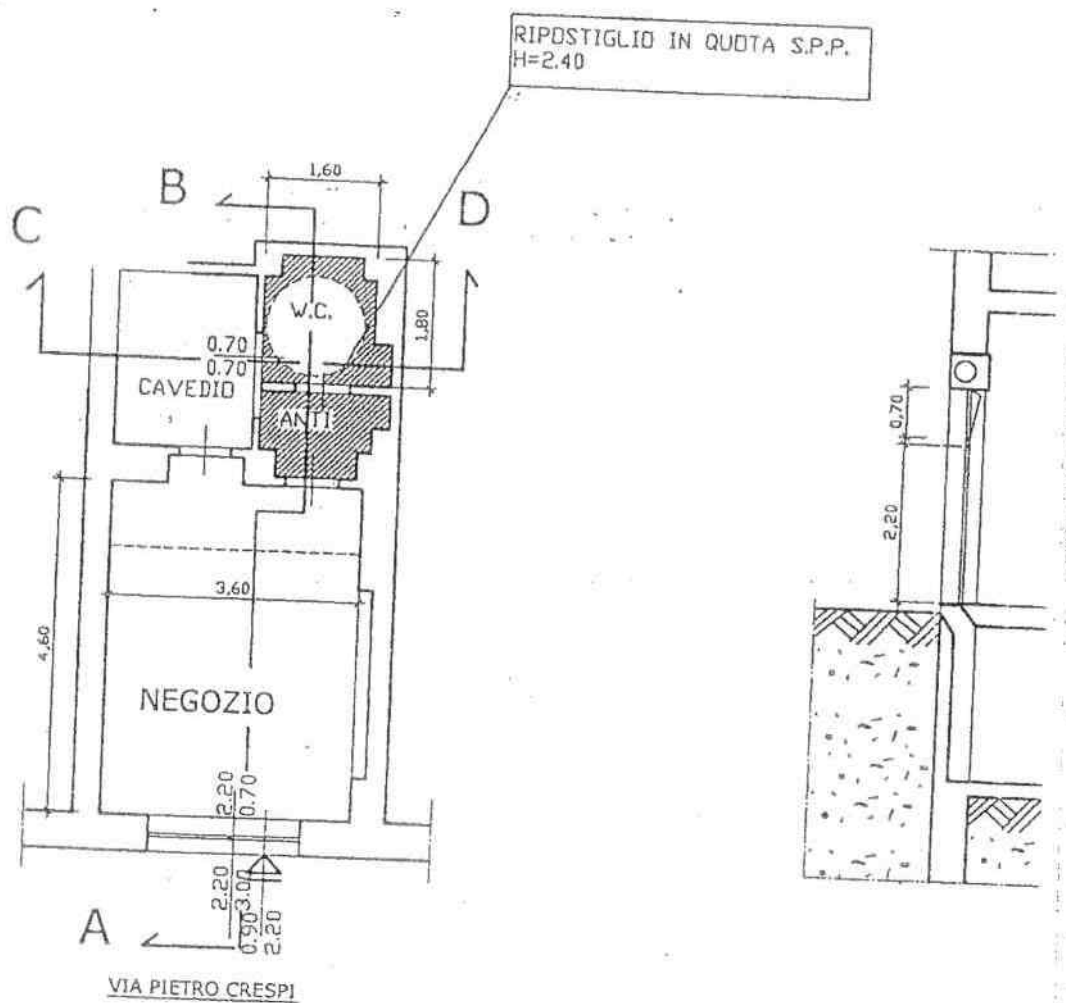
PIANO TERRA

NEGOZIO SUB. 58 IN MILANO VIA P. CRESPI N. 14
PLANIMETRIA STATO ATTUALE - SCALA 1:100

ALCOLI AERDILLUMINANTI

LOCALE	SUPERFICIE LOCALE	SUPERFICIE AERANTE	SUPERFICIE ILLU
NEGOZIO	$4.60 \times 3.60 = 16.56$	$(0.90 \times 2.20) + (2.20 \times 0.70) = 3.52$	$(3.00 - 0.60) \times 2.20 =$
V.C.	$1.60 \times 1.80 = 2.88$	$0.70 \times 0.70 = 0.49 (*)$	$0.70 \times 0.70 = 0$

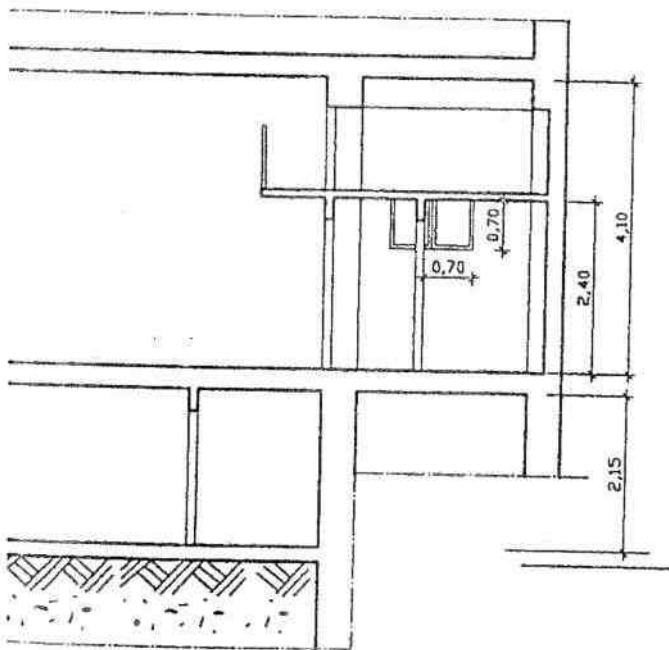
NOTA: LA SUPERFICIE TOTALE DELLA FINESTRA DEL BAGNO E' M. 1.20 X 2.00 - LA PARTE



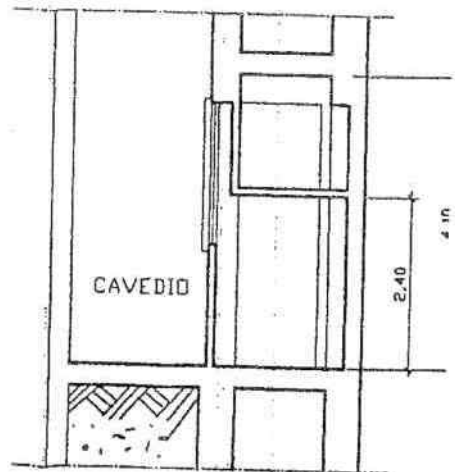
PIANTA PIANO TERRENO

ILLUMINANTE	RAPP. AER.	RAPP. ILLUM.
2.20=5.28	1/4.7	1/3.1
= 0.49 (*)	1/5.9	1/5.9

ARTE UTILE AERODILLUMINANTE E' M. 0.70 X 0.70



SEZIONE A - B



SEZIONE C-D