

ESTRATTO DI P.R.G.
scala 1:2000

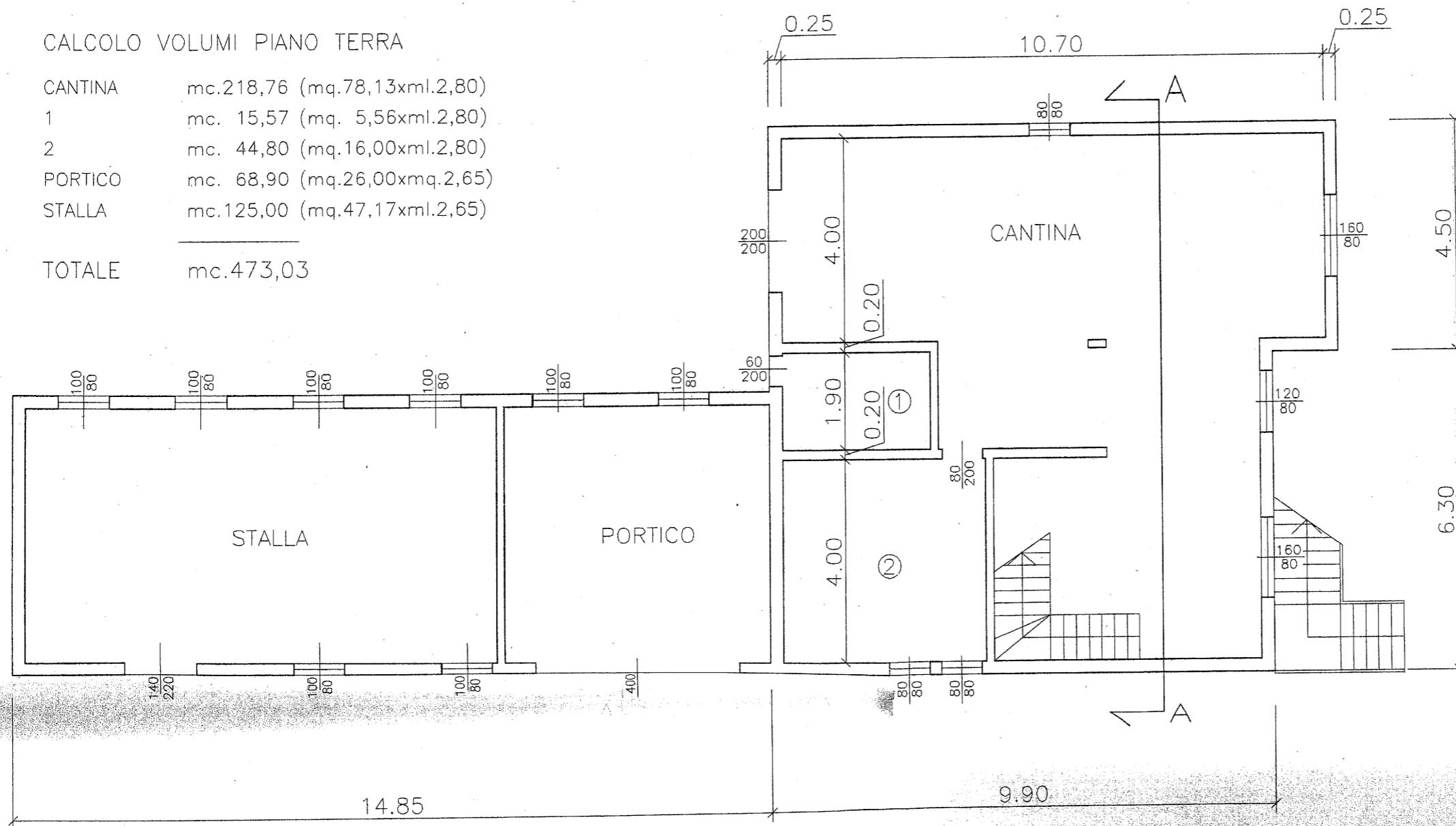


ESTRATTO DI MAPPA
Comune di Pasiano di Pordenone
Foglio 03 mappale 759
scala 1:2000

PROGETTO APPROVATO

CALCOLO VOLUMI PIANO TERRA

CANTINA	mc.218,76 (mq.78,13xml.2,80)
1	mc. 15,57 (mq. 5,56xml.2,80)
2	mc. 44,80 (mq.16,00xml.2,80)
PORTICO	mc. 68,90 (mq.26,00xmq.2,65)
STALLA	mc.125,00 (mq.47,17xml.2,65)
TOTALE	mc.473,03

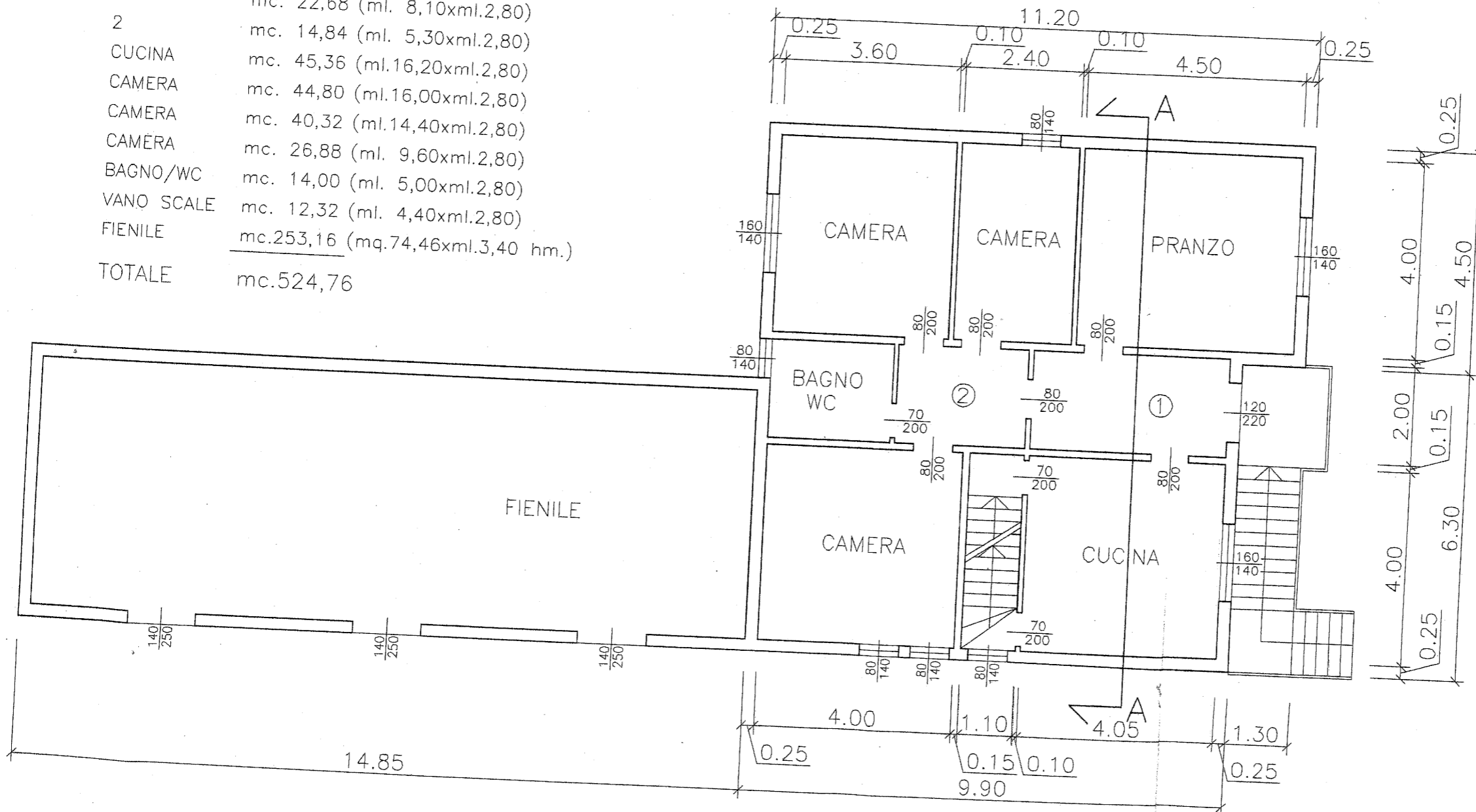


PIANTA PIANO TERRA

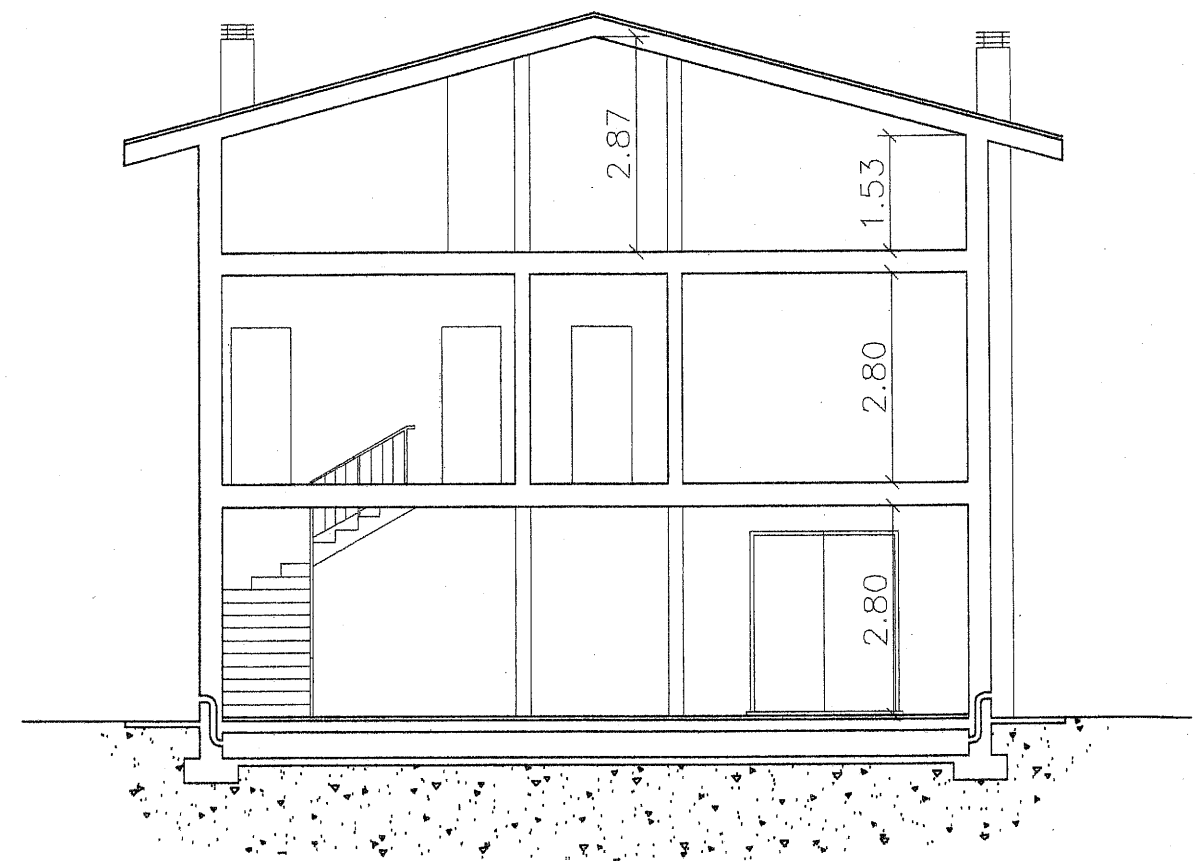
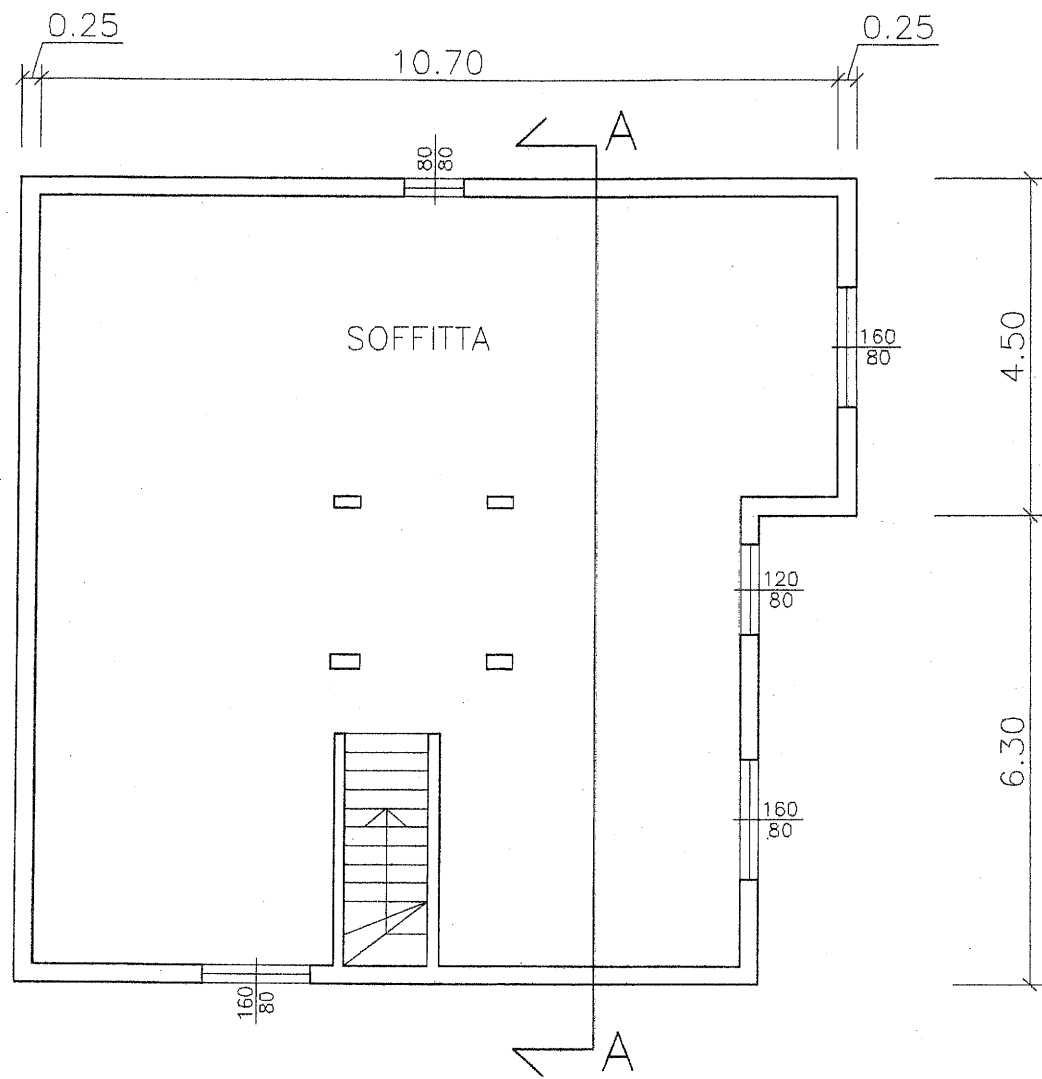
CAL
 PRA
 1
 2
 CUC
 CAM
 CAM
 CAM
 BAG
 VAN
 FIEN
 TOT

CALCOLO VOLUMI PIANO PRIMO

PRANZO	mc. 50,40 (ml.18,00xml.2,80)
1	mc. 22,68 (ml. 8,10xml.2,80)
2	mc. 14,84 (ml. 5,30xml.2,80)
CUCINA	mc. 45,36 (ml.16,20xml.2,80)
CAMERA	mc. 44,80 (ml.16,00xml.2,80)
CAMERA	mc. 40,32 (ml.14,40xml.2,80)
CAMERA	mc. 26,88 (ml. 9,60xml.2,80)
BAGNO/WC	mc. 14,00 (ml. 5,00xml.2,80)
VANO SCALE	mc. 12,32 (ml. 4,40xml.2,80)
FIENILE	mc.253,16 (mq.74,46xml.3,40 hm.)
TOTALE	mc.524,76



PIANTA PIANO PRIMO



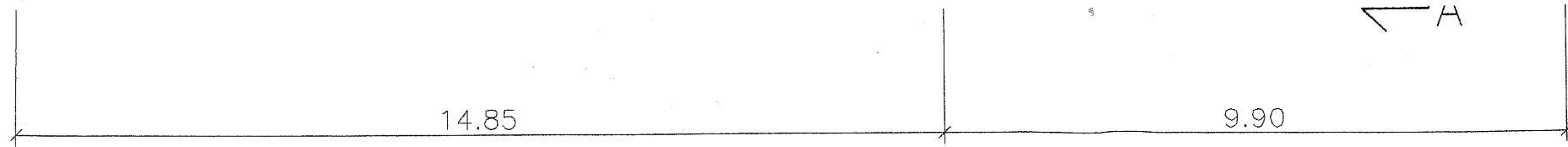
SEZIONE A-A

CALCOLO VOLUMI PIANO SECONDO

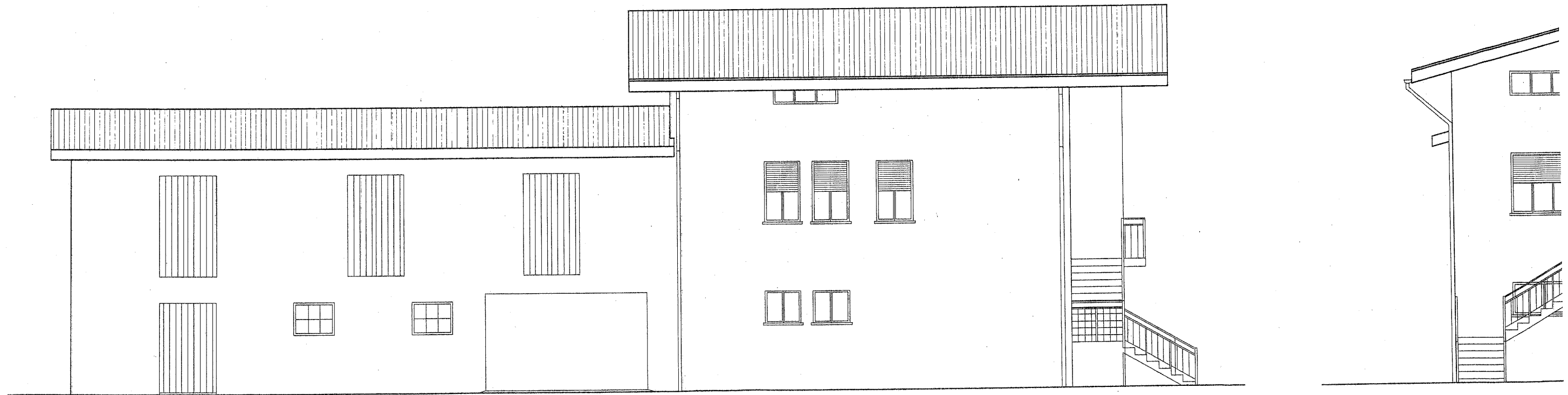
SOFFITTA $\frac{\text{mc.}224.44}{(\text{ml.}102,02 \times \text{ml.}2,20)}$

TOTALE mc. 224,44

PIANTA PIANO SECONDO

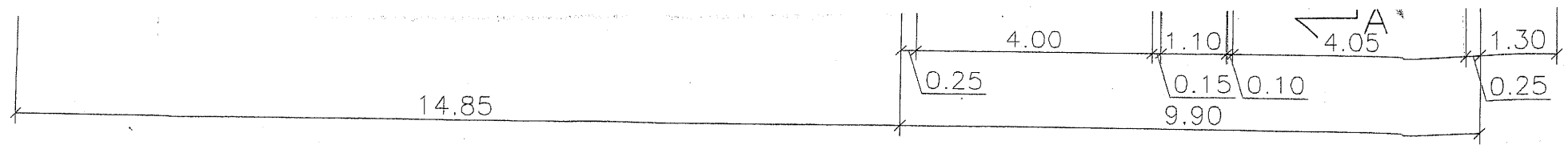


PIANTA PIANO TERRA

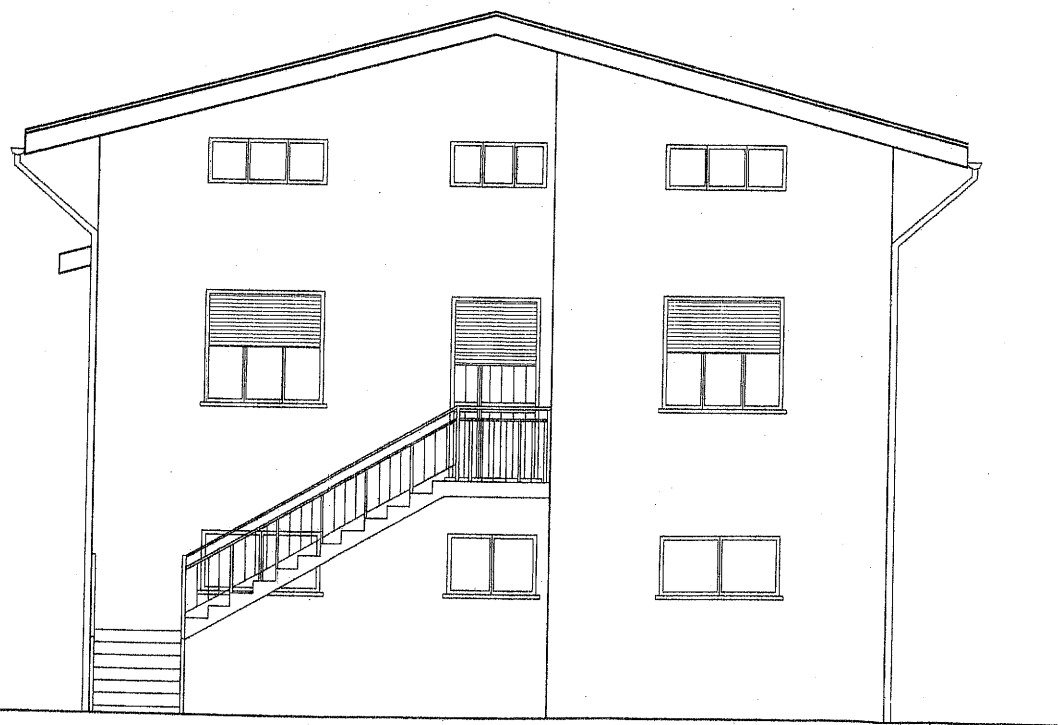
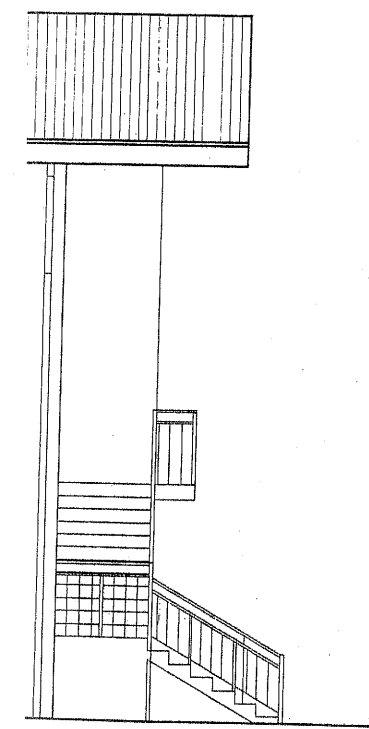


FIANCO

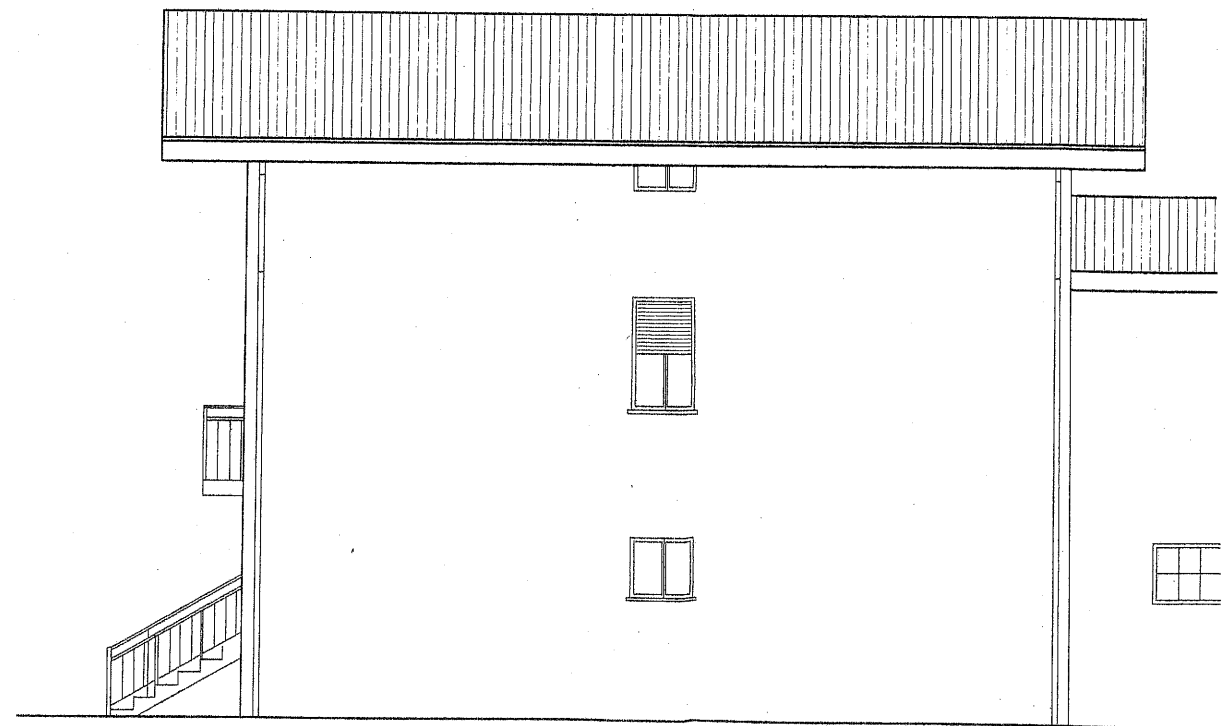
FRONTE



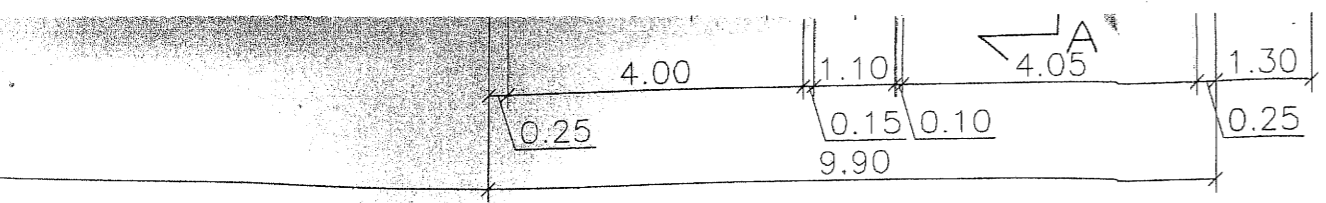
PIANTA PIANO PRIMO



FRONTE



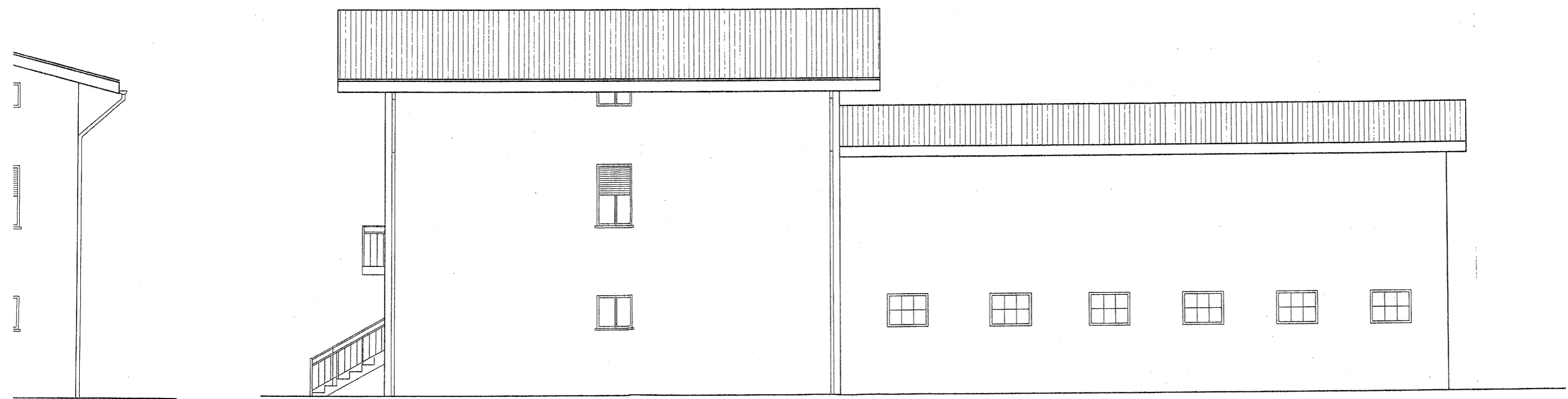
FIANCO



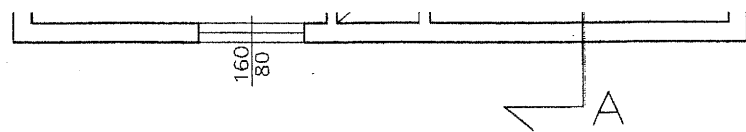
PIANTA PIANO PRIMO

CALCOLO VOL
 SOFFITTA n
 TOTALE r

PIANTA



FIANCO

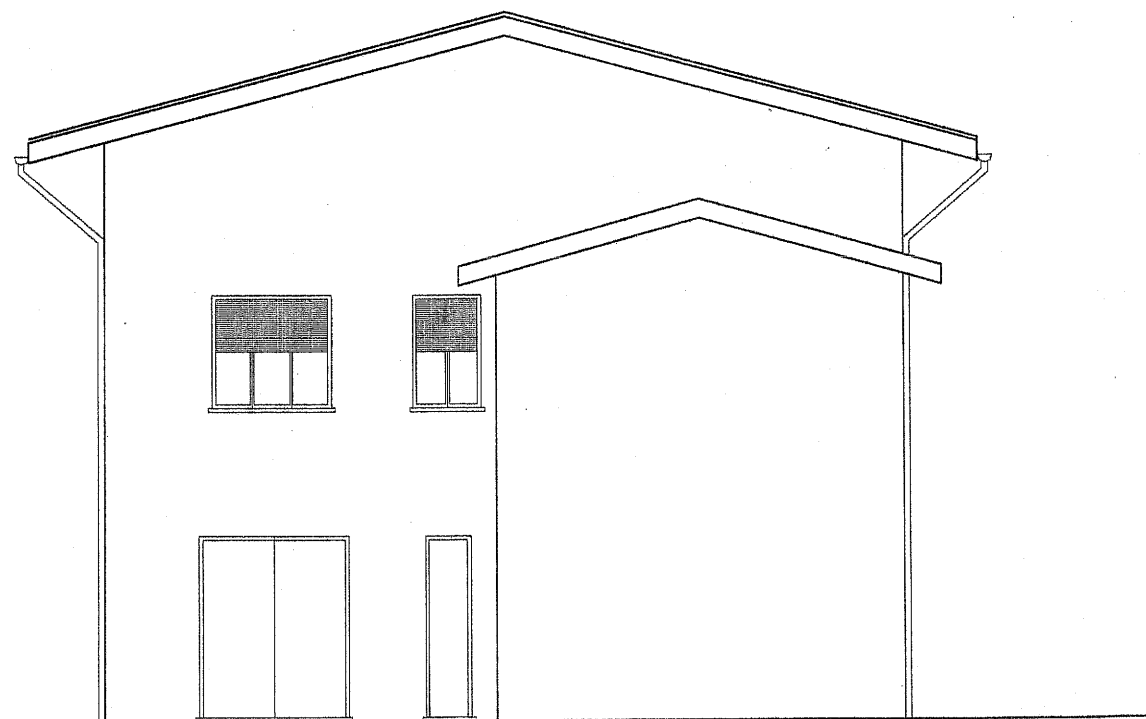


CALCOLO VOLUMI PIANO SECONDO

SOFFITTA mc.224,44 (ml.102,02xml.2,20)

TOTALE mc. 224,44

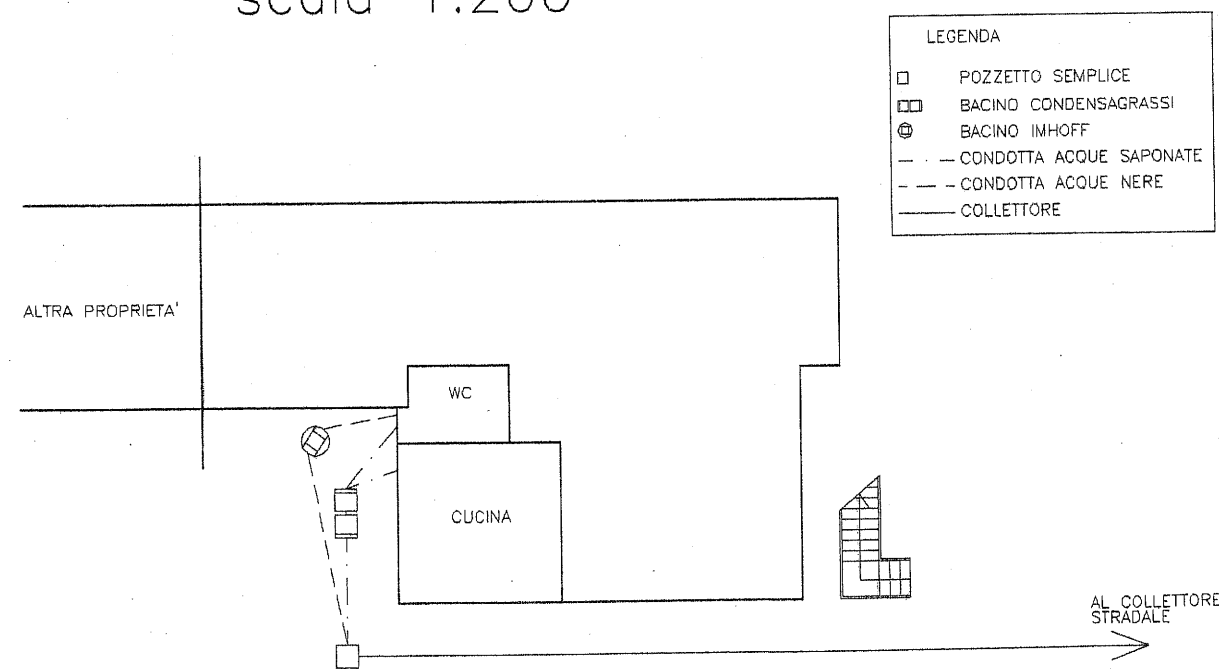
PIANTA PIANO SECONDO



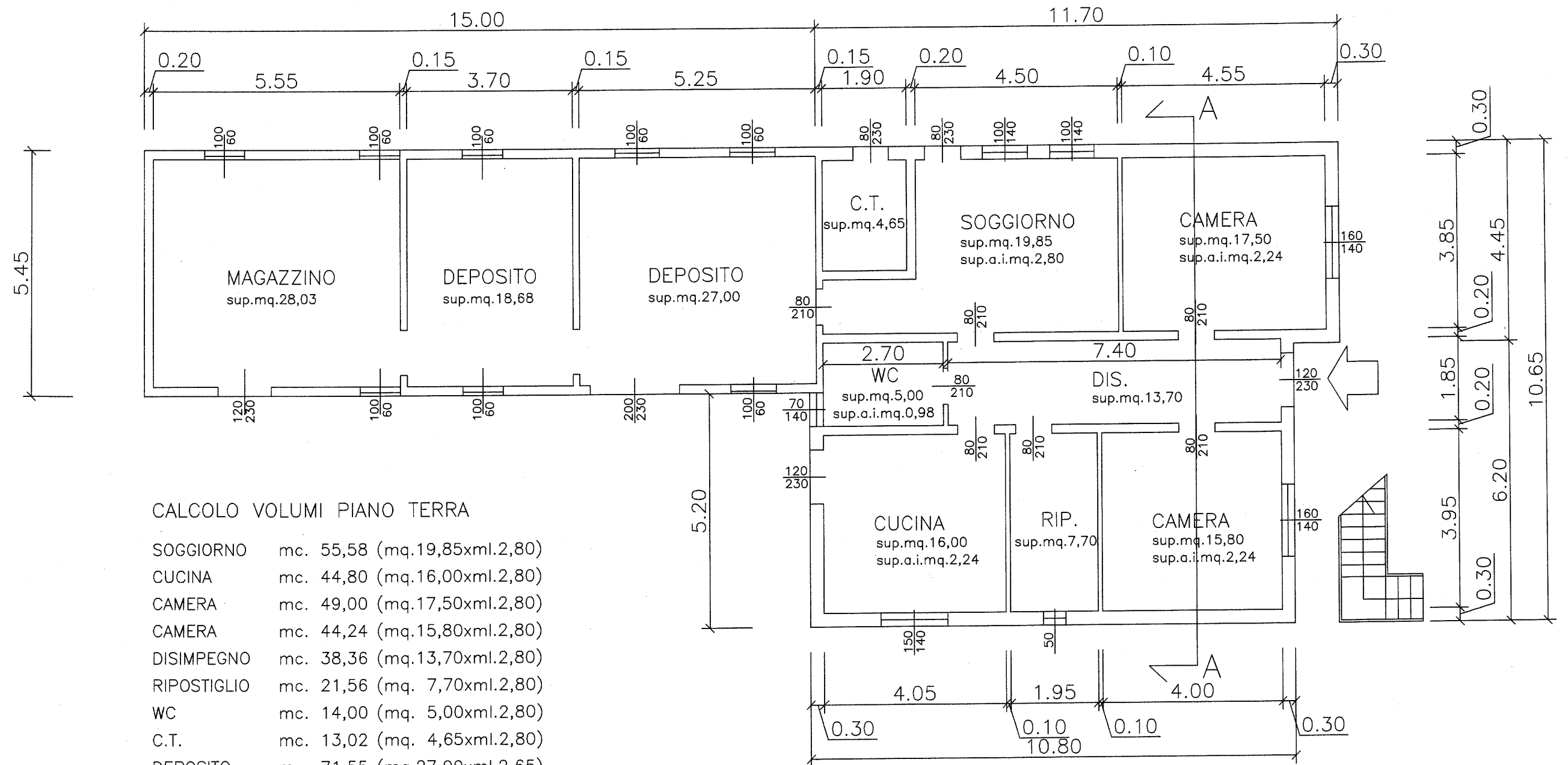
RETRO

SEZIONE A-A

SCHEMA IMPIANTO FOGNALE
scala 1:200



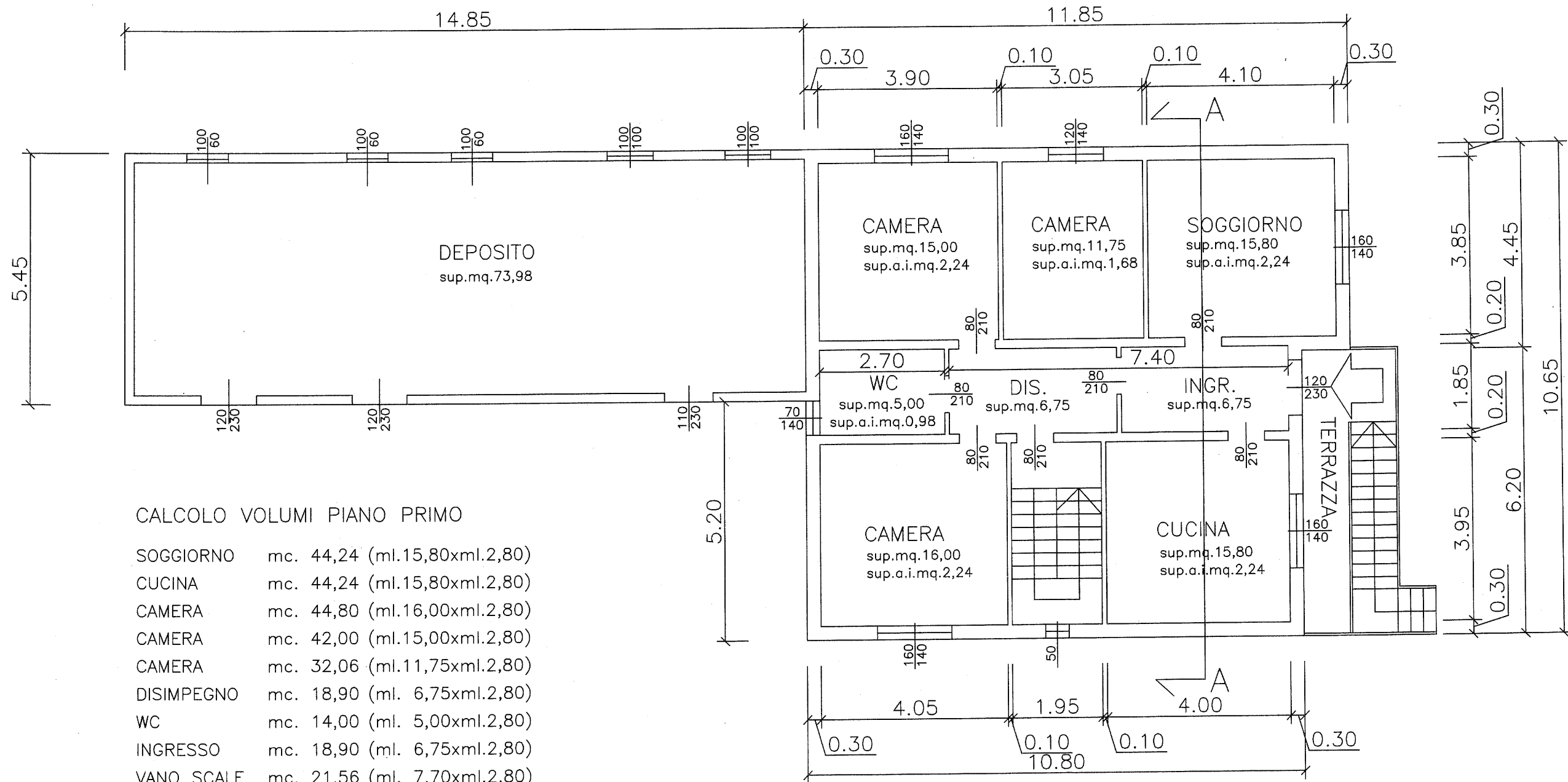
STATO DI FATTO



CALCOLO VOLUMI PIANO TERRA

SOGGIORNO	mc. 55,58 (mq.19,85xml.2,80)
CUCINA	mc. 44,80 (mq.16,00xml.2,80)
CAMERA	mc. 49,00 (mq.17,50xml.2,80)
CAMERA	mc. 44,24 (mq.15,80xml.2,80)
DISIMPEGNO	mc. 38,36 (mq.13,70xml.2,80)
RIPOSTIGLIO	mc. 21,56 (mq. 7,70xml.2,80)
WC	mc. 14,00 (mq. 5,00xml.2,80)
C.T.	mc. 13,02 (mq. 4,65xml.2,80)
DEPOSITO	mc. 71,55 (mq.27,00xml.2,65)
DEPOSITO	mc. 49,50 (mq.18,68xml.2,65)
MAGAZZINO	mc. 74,28 (mq.28,03xml.2,65)
TOTALE	mc.475,89

PIANTA PIANO TERRA



CALCOLO VOLUMI PIANO PRIMO

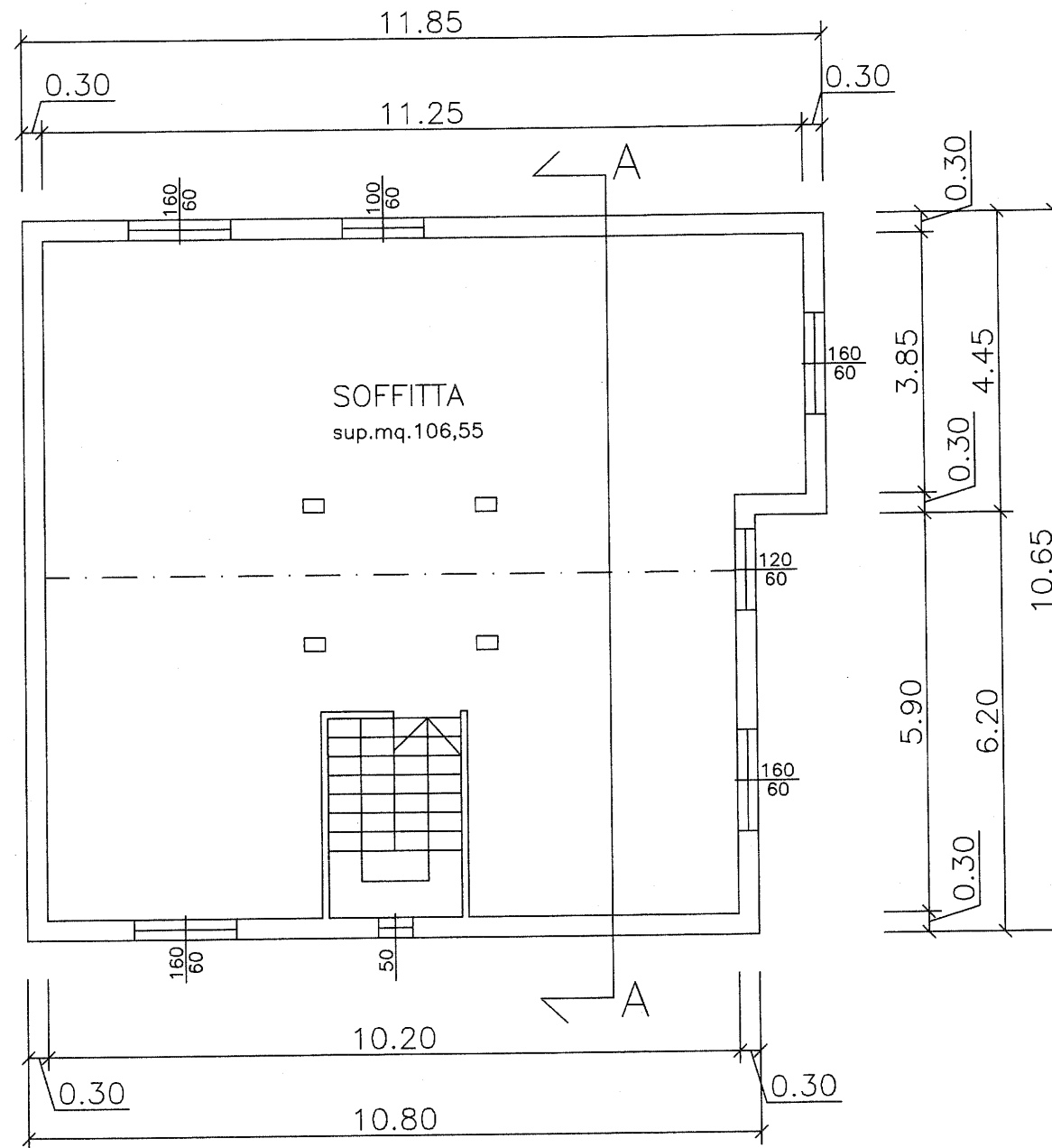
SOGGIORNO	mc. 44,24 (ml.15,80xml.2,80)
CUCINA	mc. 44,24 (ml.15,80xml.2,80)
CAMERA	mc. 44,80 (ml.16,00xml.2,80)
CAMERA	mc. 42,00 (ml.15,00xml.2,80)
CAMERA	mc. 32,06 (ml.11,75xml.2,80)
DISIMPEGNO	mc. 18,90 (ml. 6,75xml.2,80)
WC	mc. 14,00 (ml. 5,00xml.2,80)
INGRESSO	mc. 18,90 (ml. 6,75xml.2,80)
VANO SCALE	mc. 21,56 (ml. 7,70xml.2,80)
DEPOSITO	mc.199,75 (mq.73,98xml.2,70 hm.)
TOTALE	mc.480,45

PIANTA PIANO PRIMO

CALCOLO VOLUMI PIANO SECONDO

SOFFITTA mc. 234,41 (ml.106,55xml.2,20)

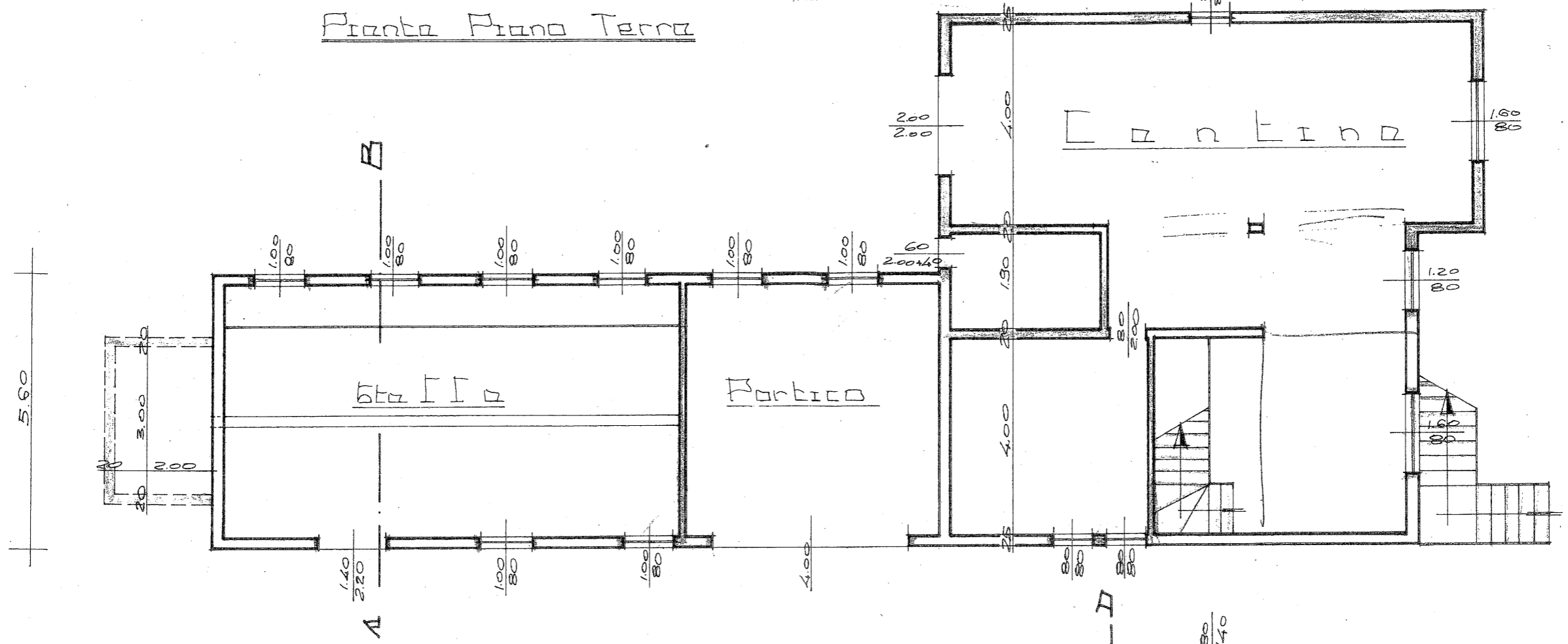
TOTALE mc. 234,41



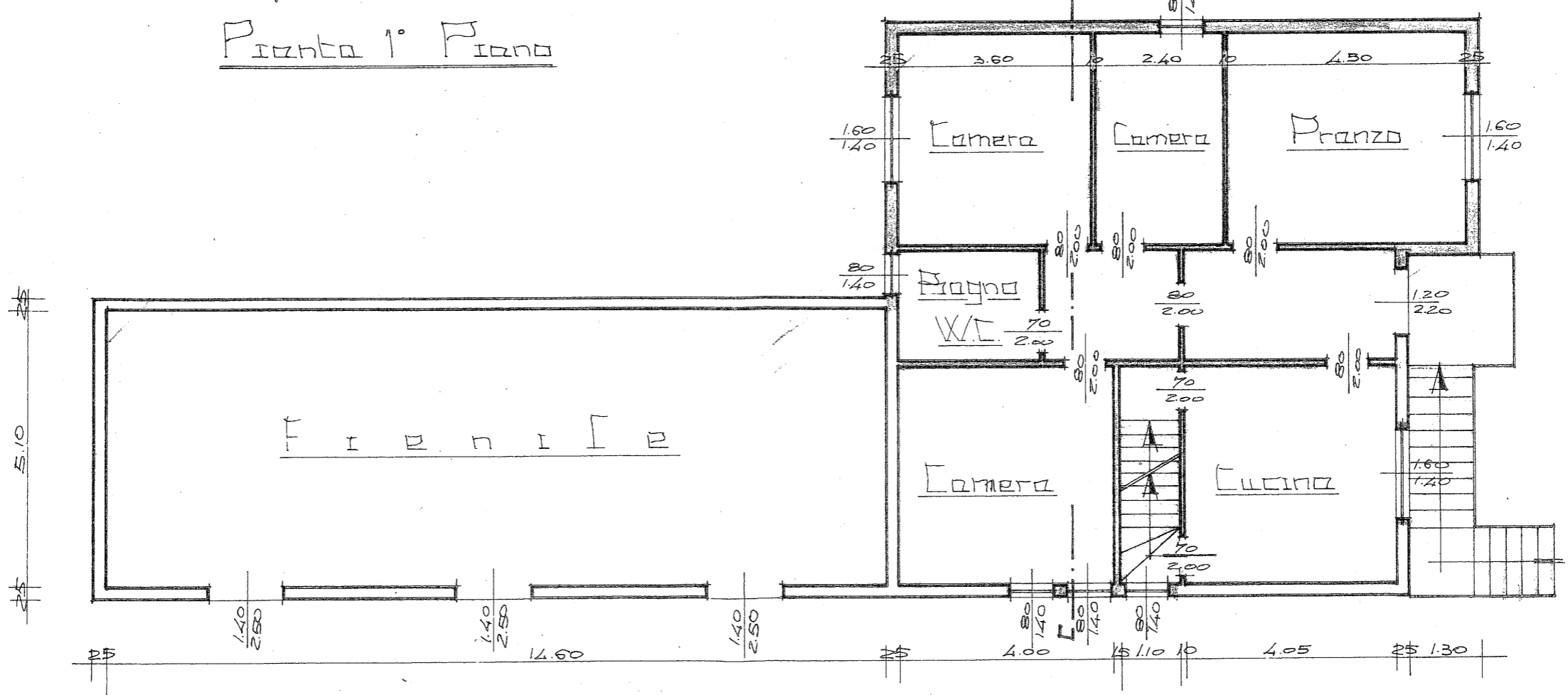
PIANTA PIANO SECONDO

25 3.25 5 5.20 25 10.70 25

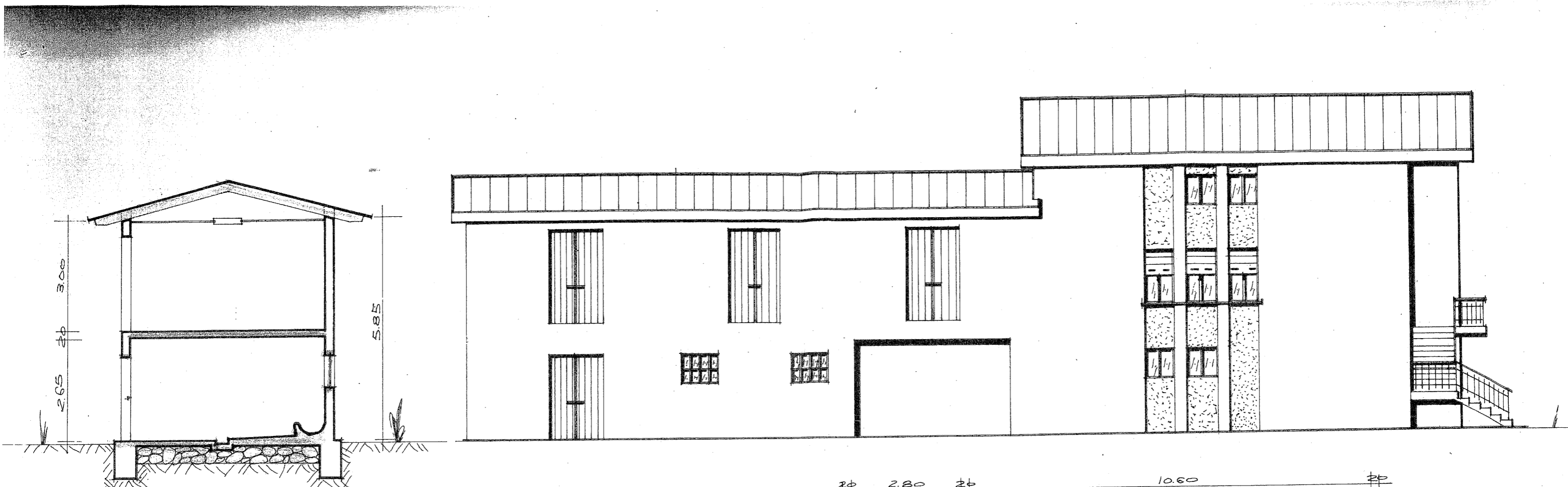
Pianta Piano Terra



Pianta 1° Piano

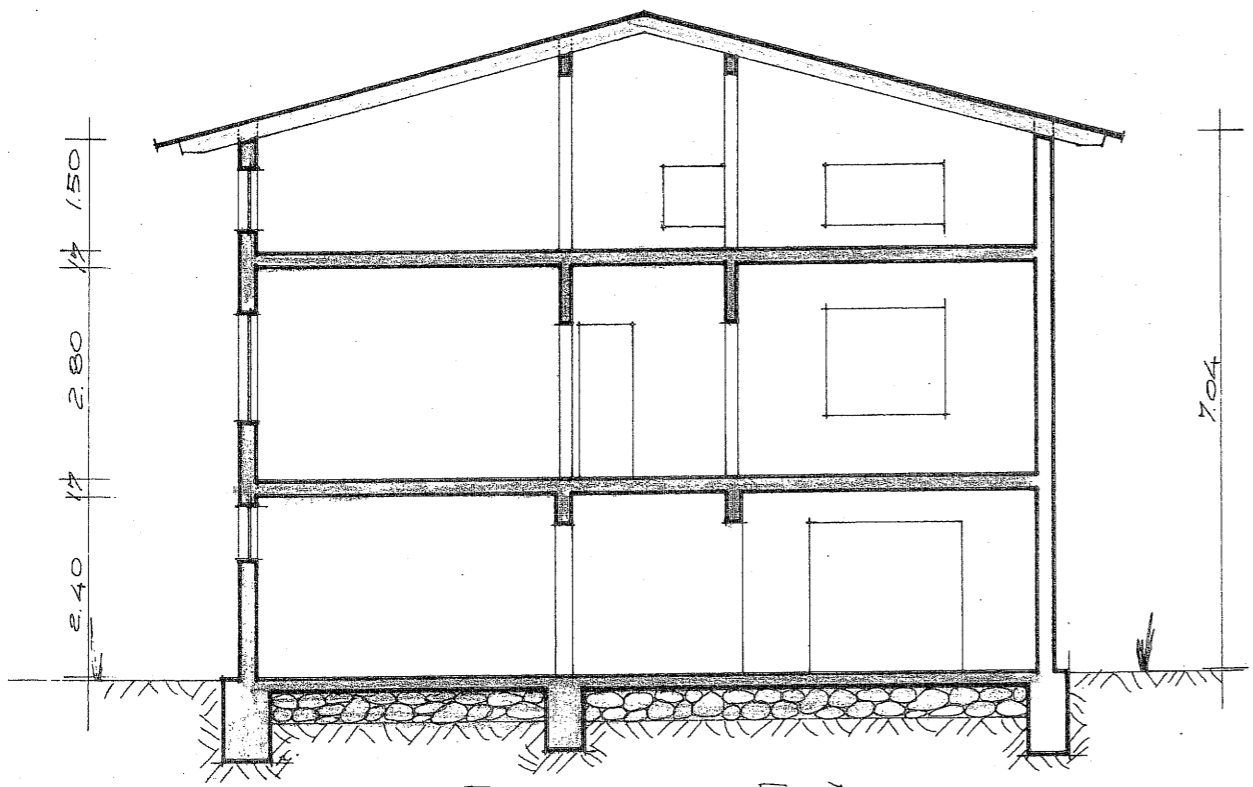


2.90
3.70

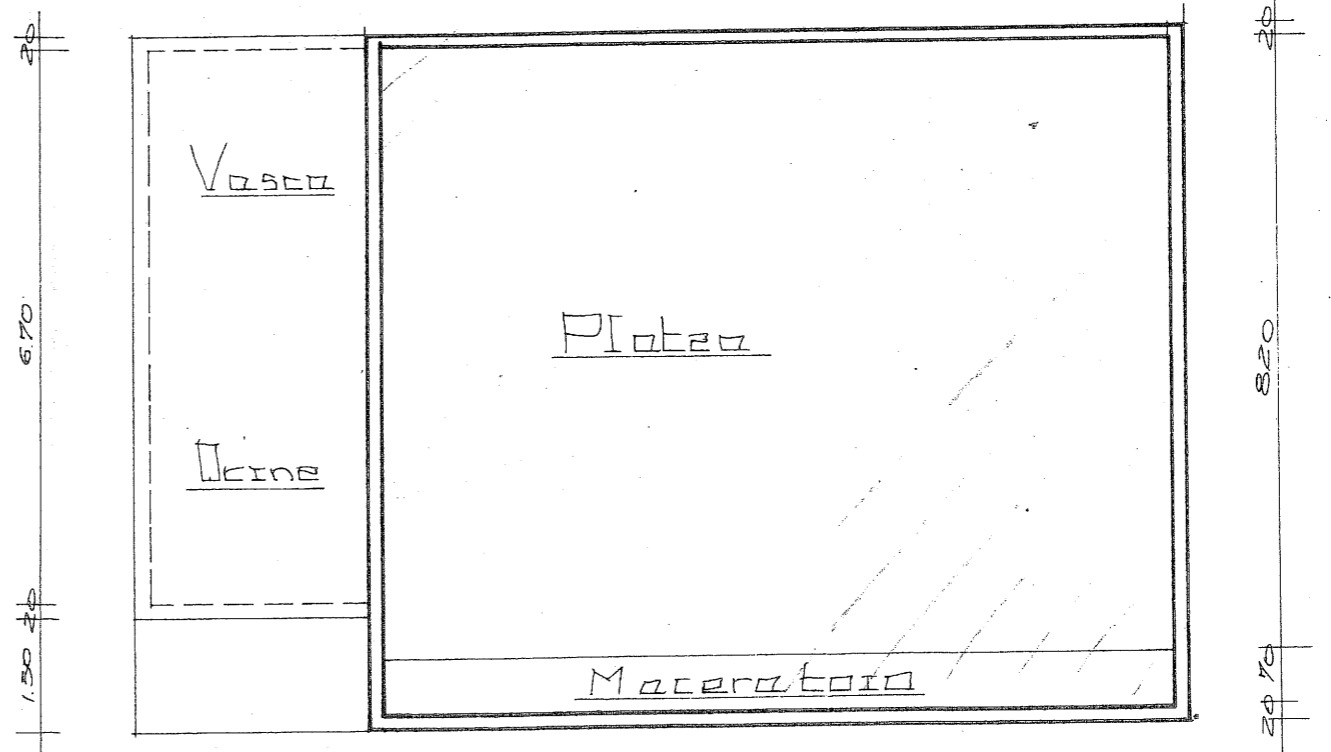


SEZIONE A-B

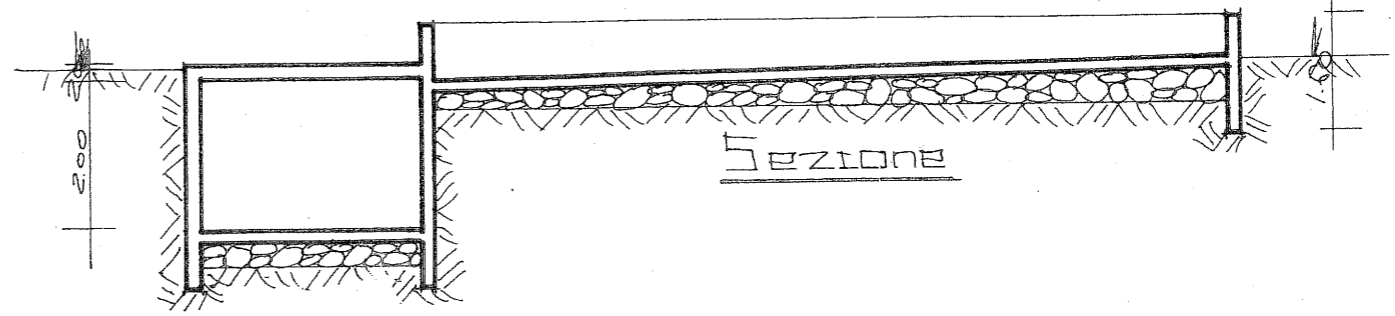
20 2.80 20 10.60 20



SEZIONE C-D



Pianta Concimata



SEZIONE