



fronte principale su via bisciola





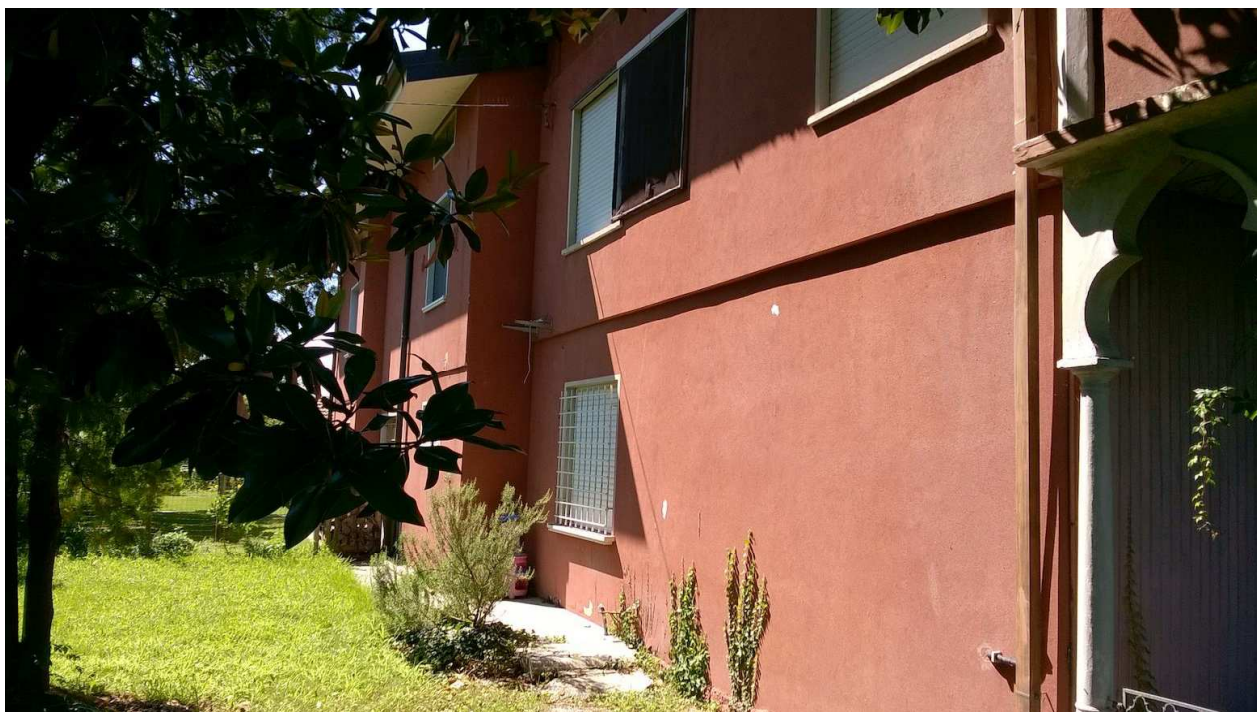


fronte principale





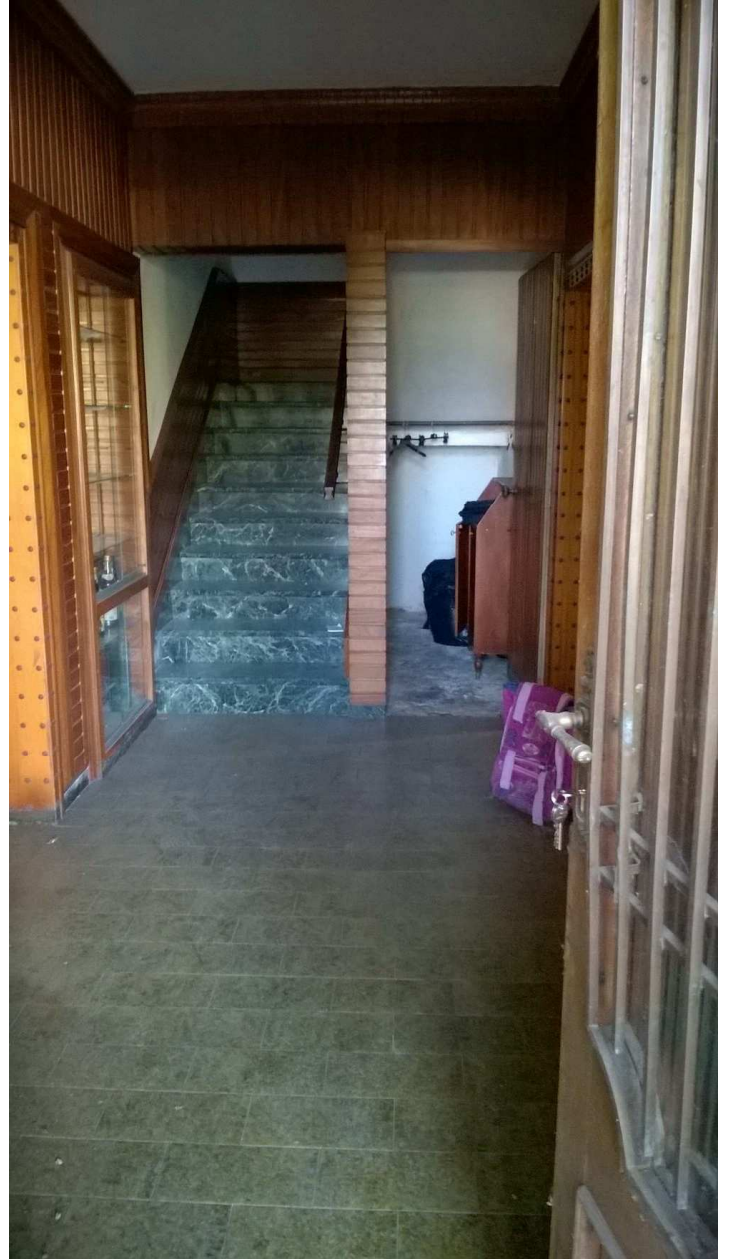
fronte ovest

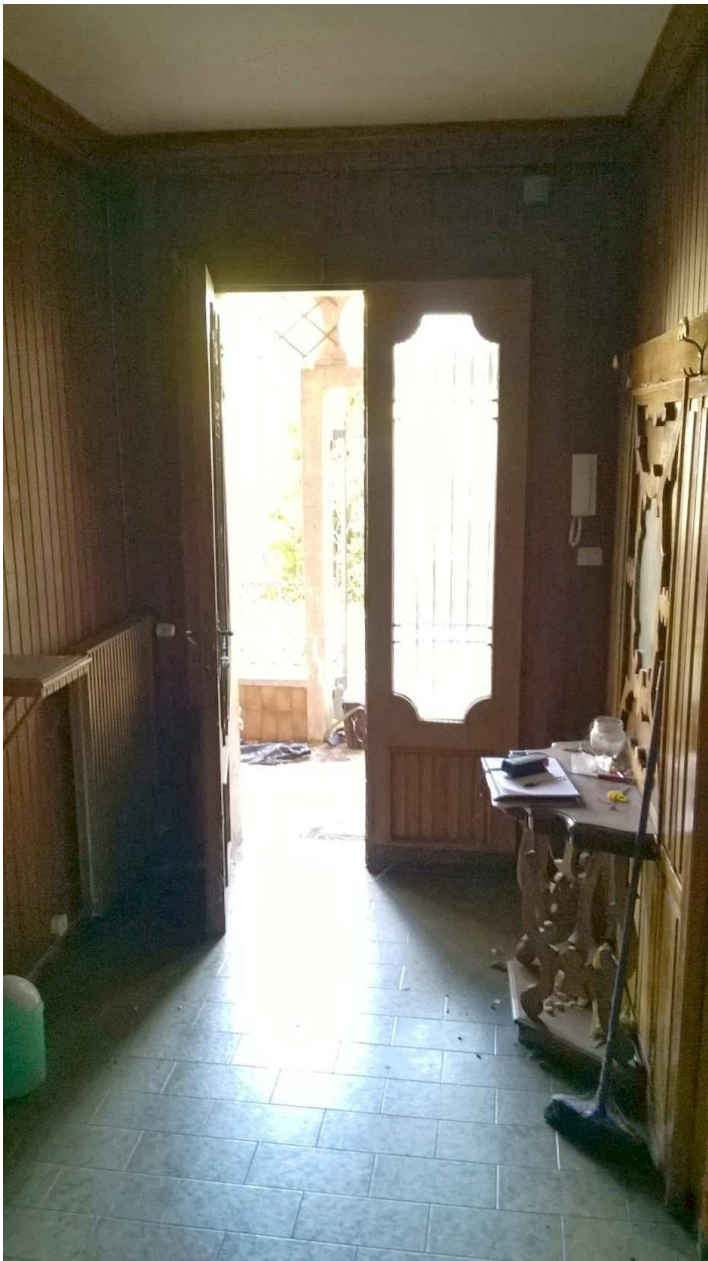


fronte est



ingresso principale piano terra





ingresso principale

soggiorno







soggiorno





cucina

ripostiglio/c.t.







bagno piano terra





ripostiglio e accesso garage

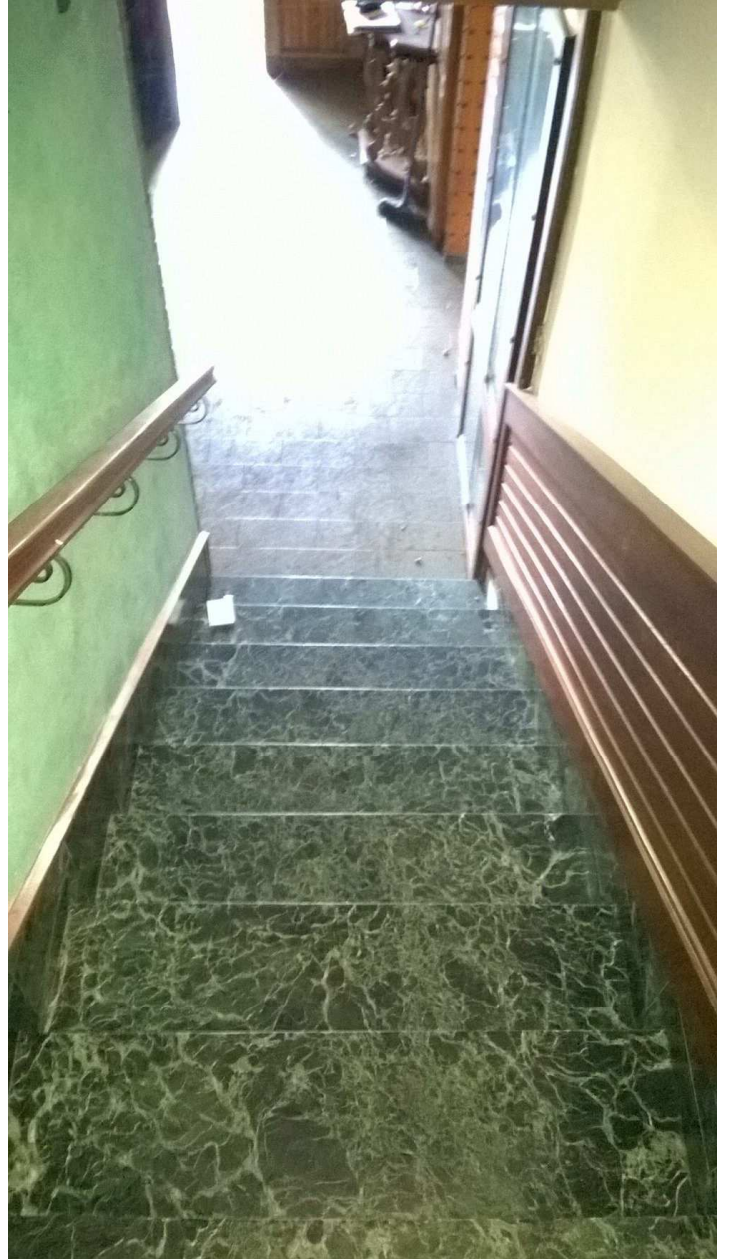


autorimessa





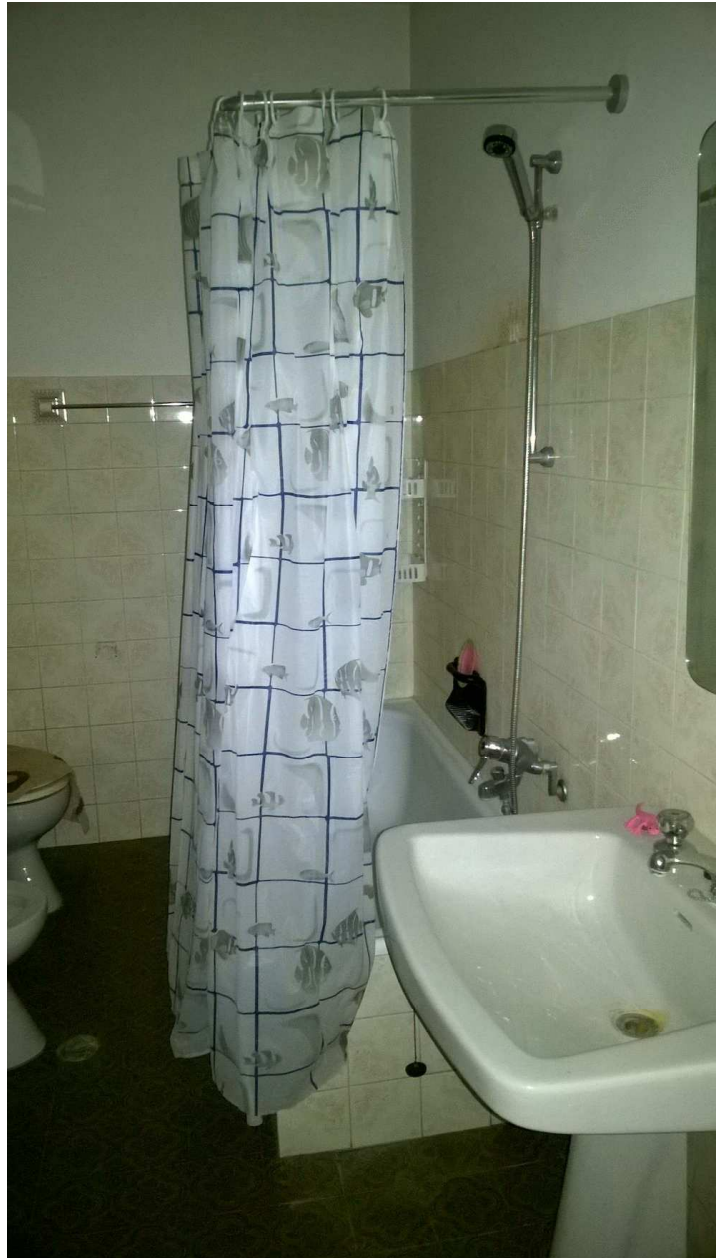
scala piano terra-primo



corridoio piano primo



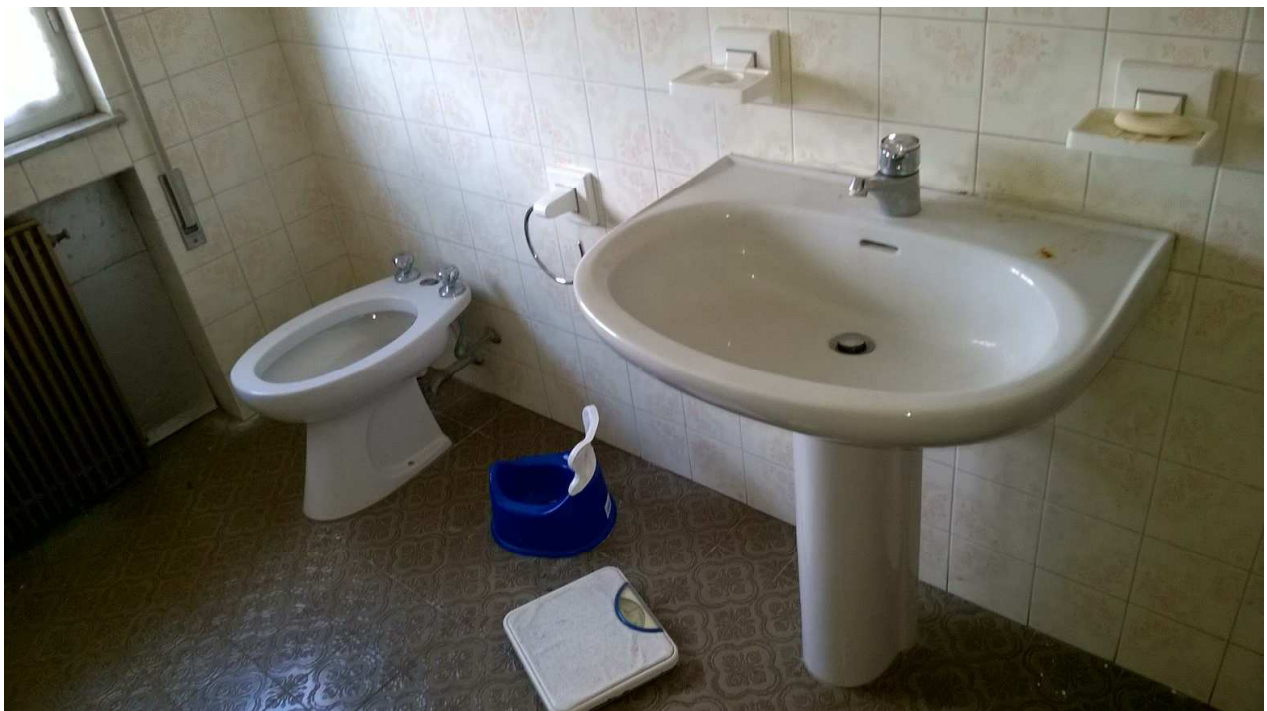
bagno cieco piano primo







bagno piano primo





camere piano primo







camera piano primo



corridoio e partenza scala al piano 2°

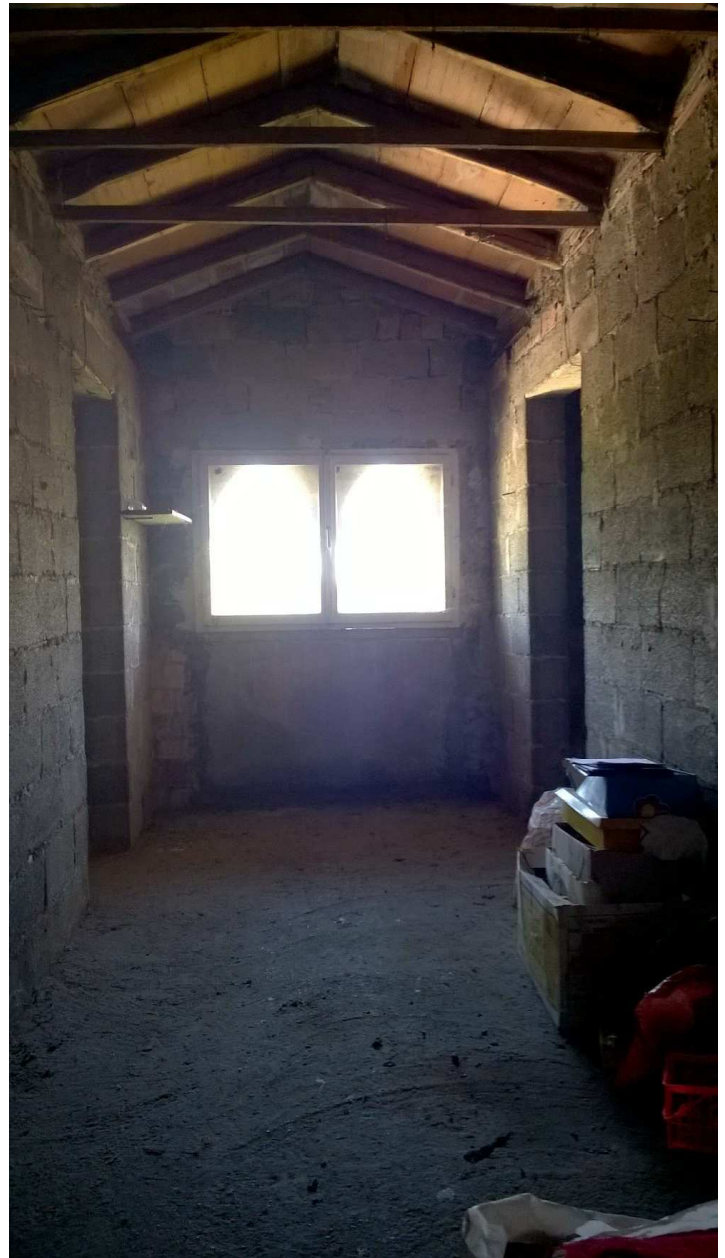
dettagli impianti piano primo







soffitta piano secondo arrivo scala



soffitta piano secondo



soffitta piano secondo

