

Foto 1 – vista aerea edificio



Foto 2 – vista dal fronte strada. In giallo LOTTO A (sub 1) in rosa LOTTO B (sub 2 e 3)



Foto 4 –retro edificio



Foto 5 – prospetto laterale (garage, sub 3, del LOTTO B

INTERNI LOTTO A



Foto 6 – ingresso

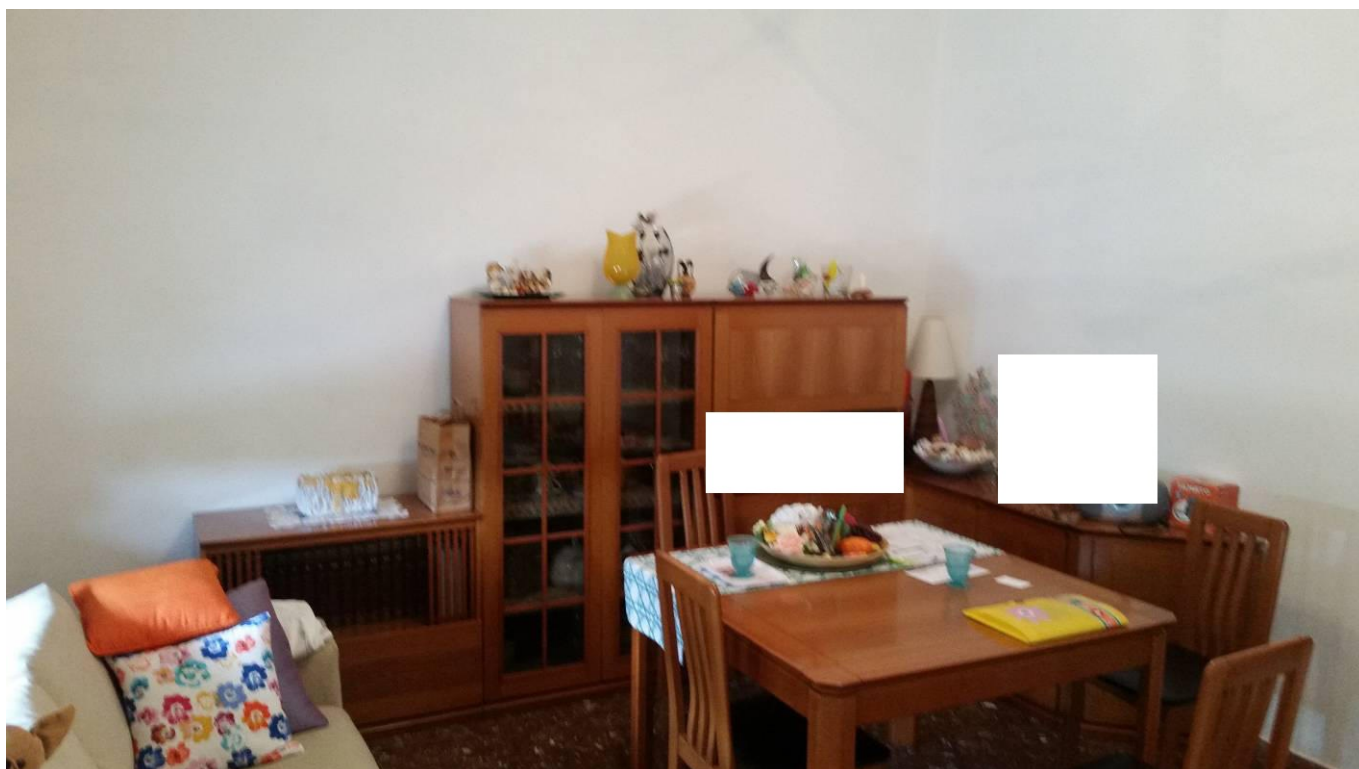


Foto 7 – soggiorno



Foto 8 – cucina

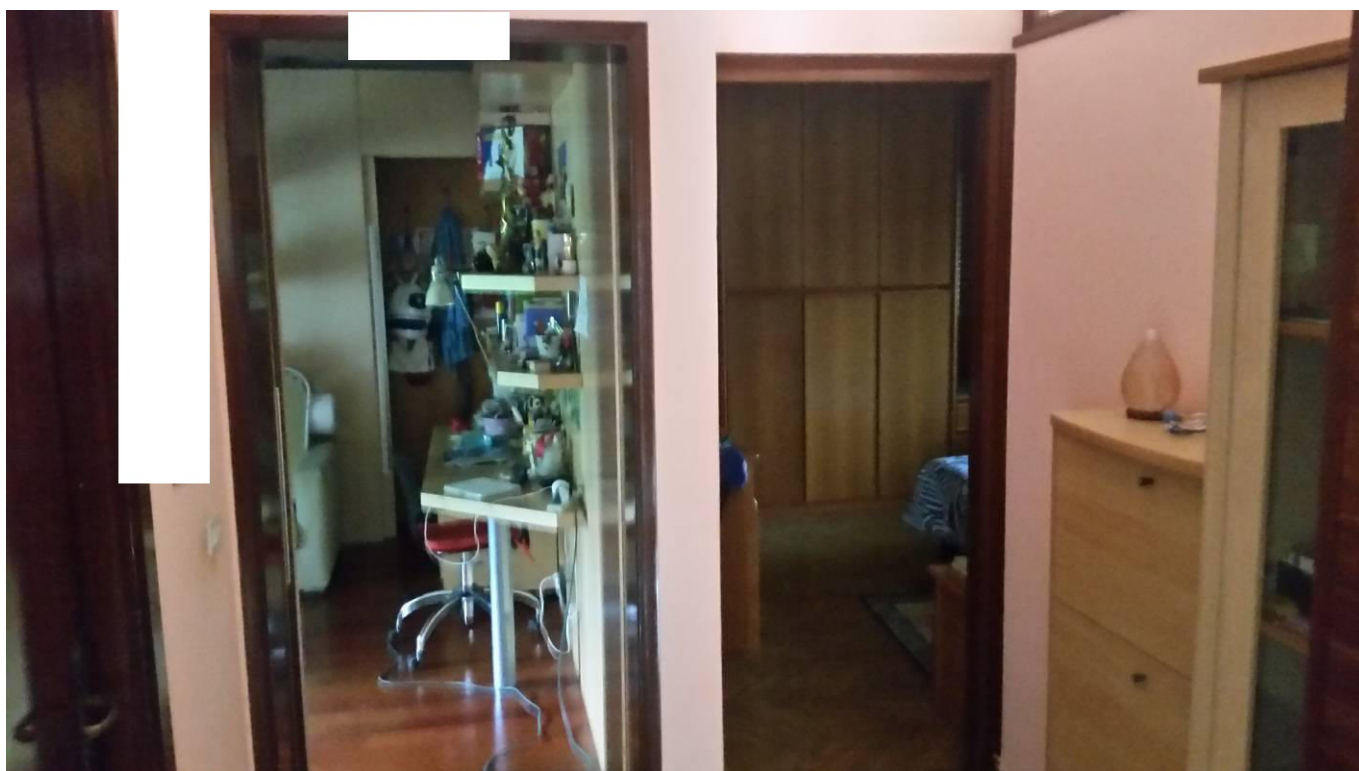


Foto 9 – antibagno- corridoio

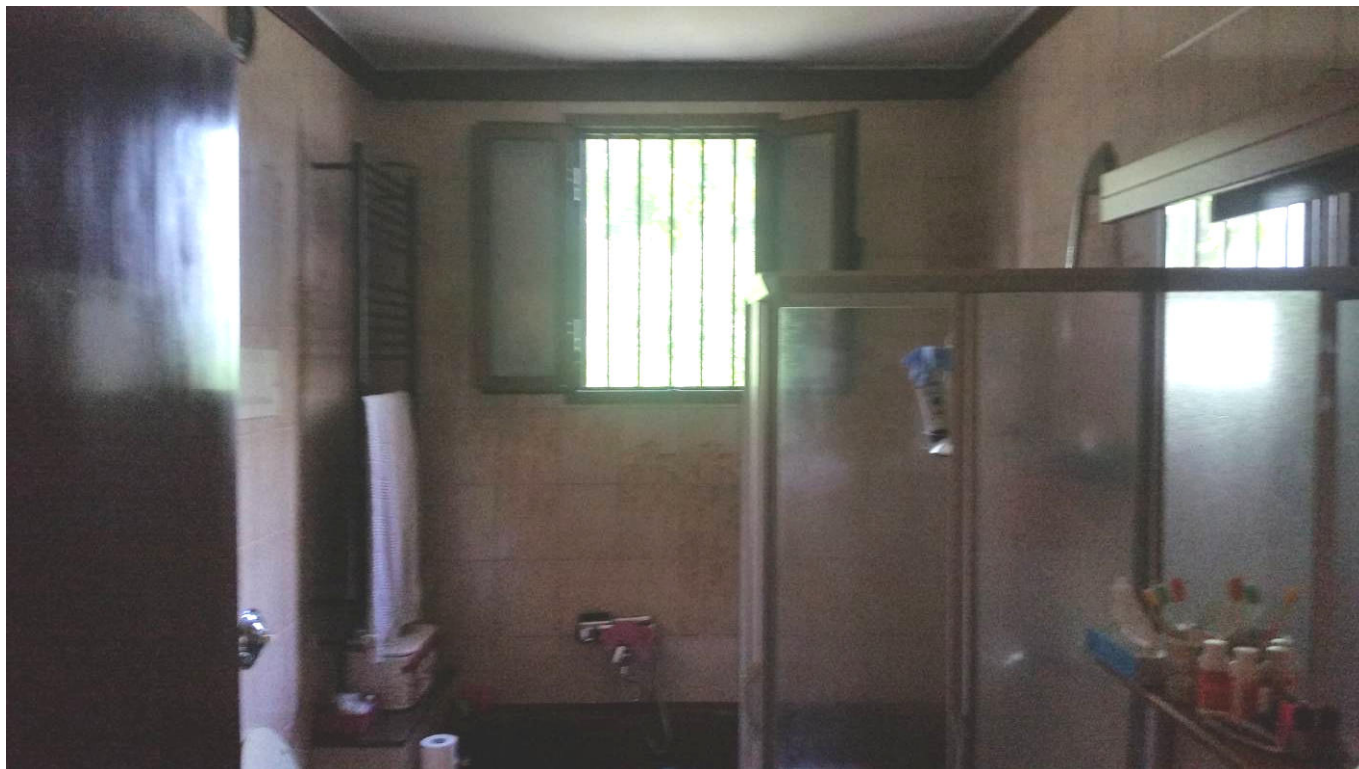


Foto 10 – bagno



Foto 11 – camera doppia con accesso alla cantina



Foto 12 – accesso alla cantina



Foto 13 – cantina

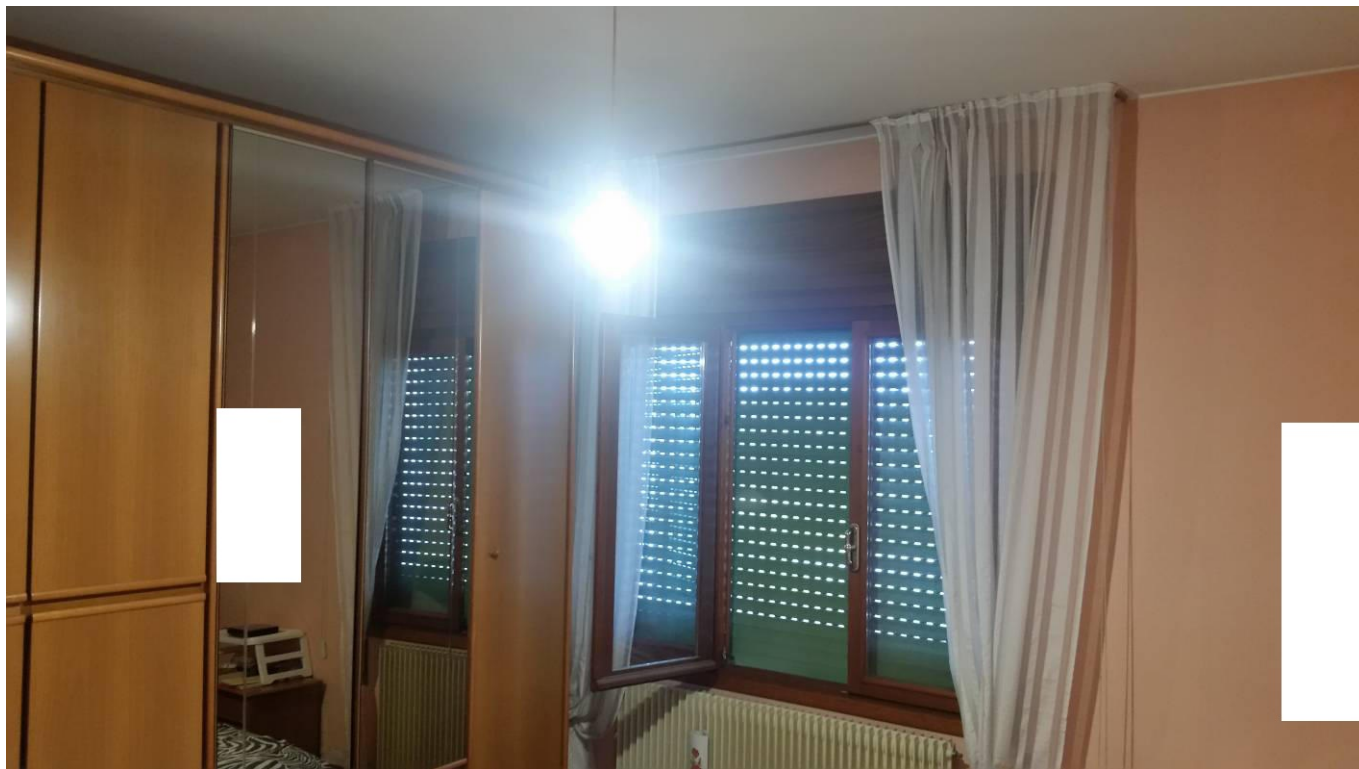


Foto 14 – camera matrimoniale

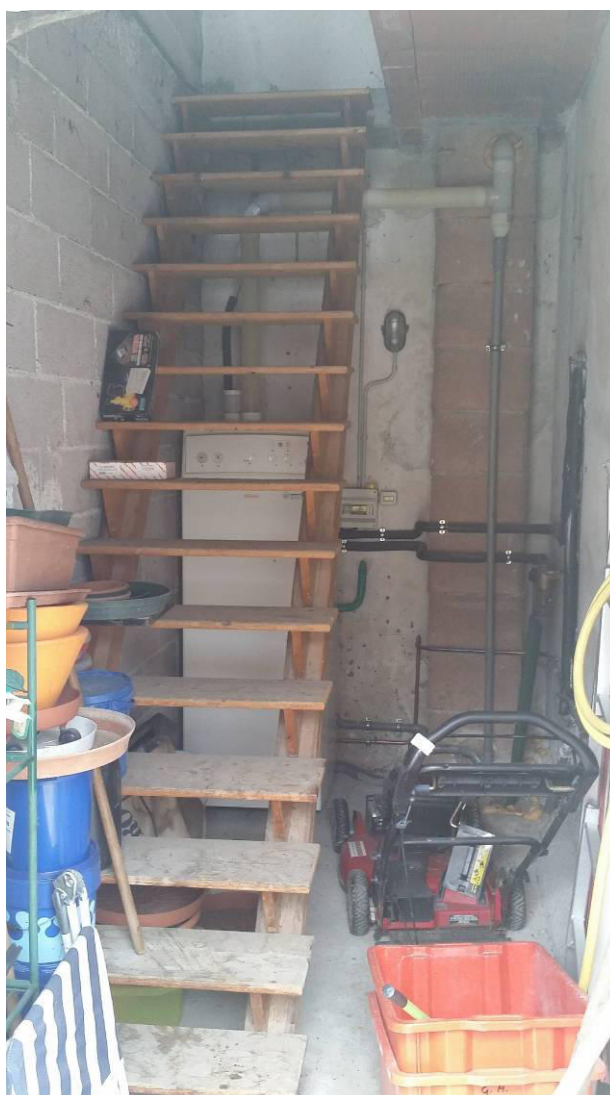


Foto 15 – accesso alla soffitta e centrale termica



Foto 16 – soffitta



Foto 17 – soffitta

INTERNI LOTTO B



Foto 18 – 19 – Ingresso e deposito al piano terra



Foto 20 – Soffitta al piano primo



Foto 21 – soggiorno

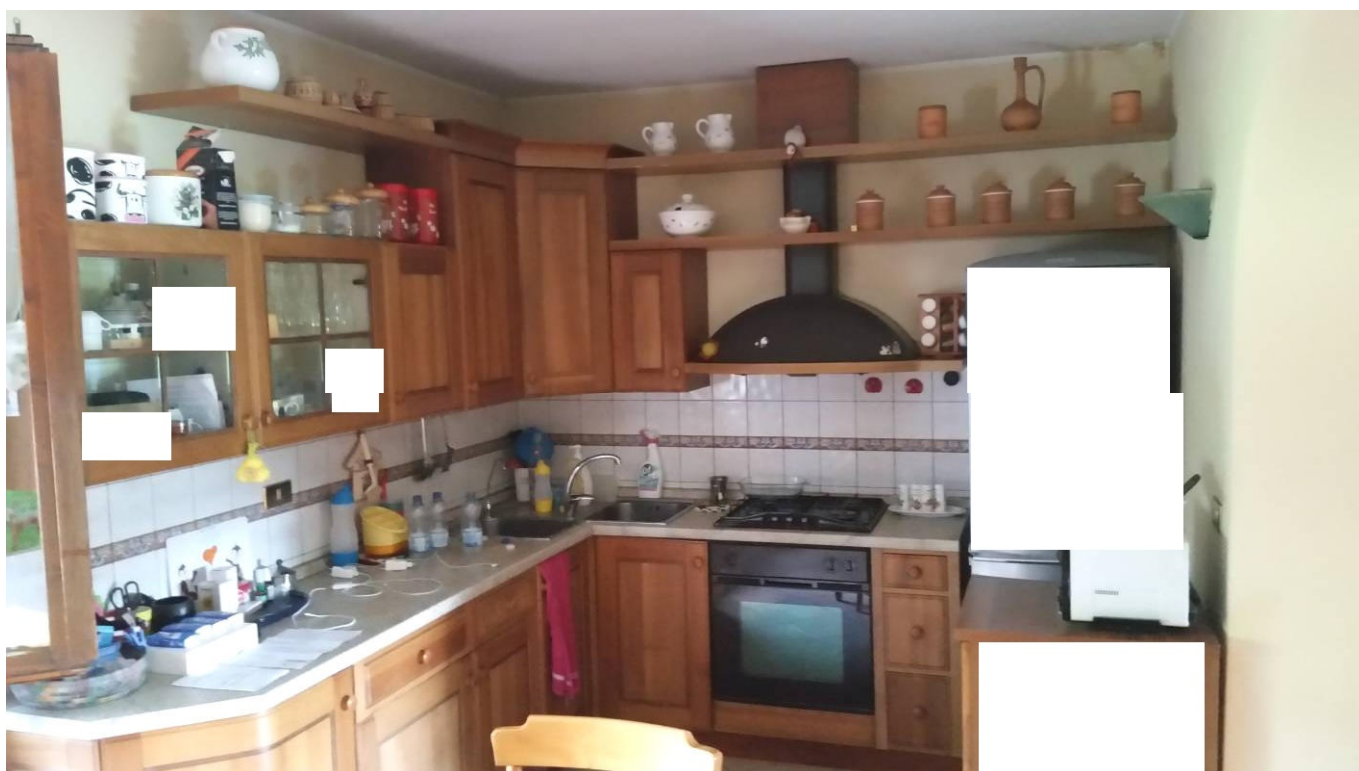


Foto 22 – cucina

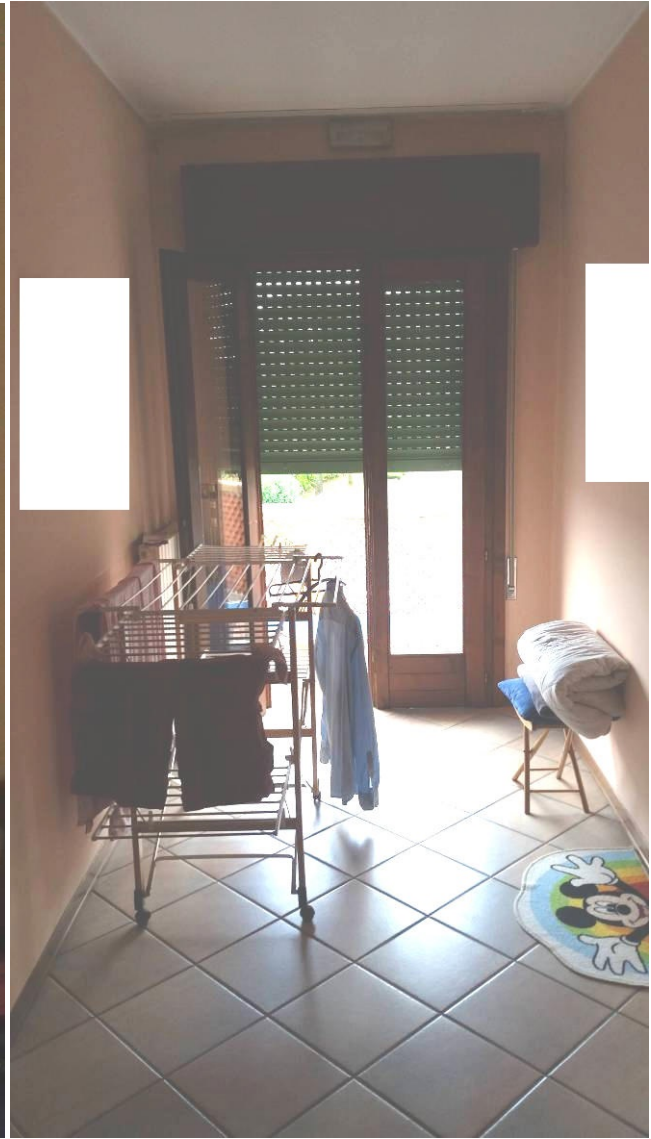


Foto 23 – 24 – corridoio verso zona notte e terrazzo

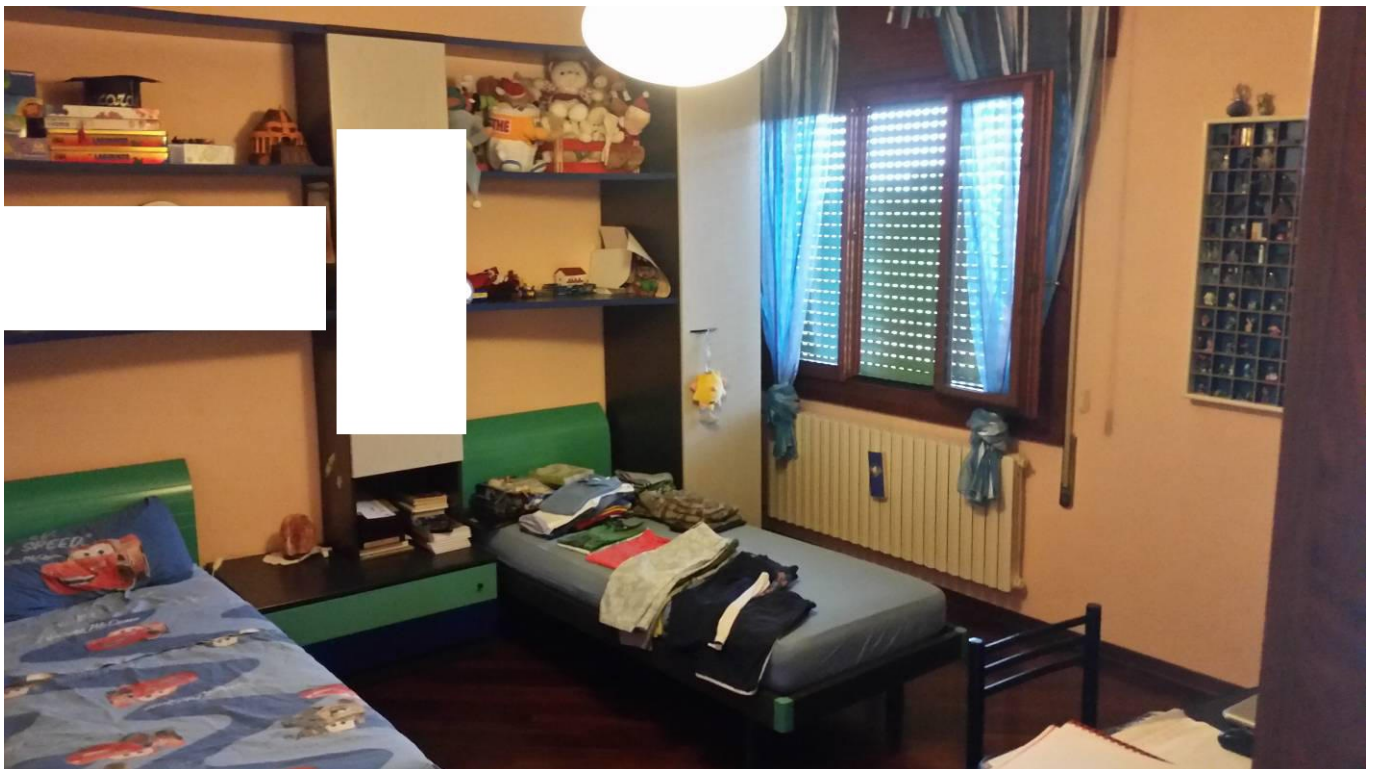


Foto 25 – camera da letto



Foto 26 – camera matrimoniale



Foto 27 – terrazzo fronte strada



Foto 28 – bagno



Foto 29 – camera da letto 2