

TRIBUNALE DI PORDENONE

Esecuzioni Immobiliari

All'Ill.mo Sig. G. E. **Dott. Francesco PETRUCCO TOFFOLO**

E.I. n. 291/14

ALLEGATO 4

- Documentazione fotografica

PUNTI DI SCATTO

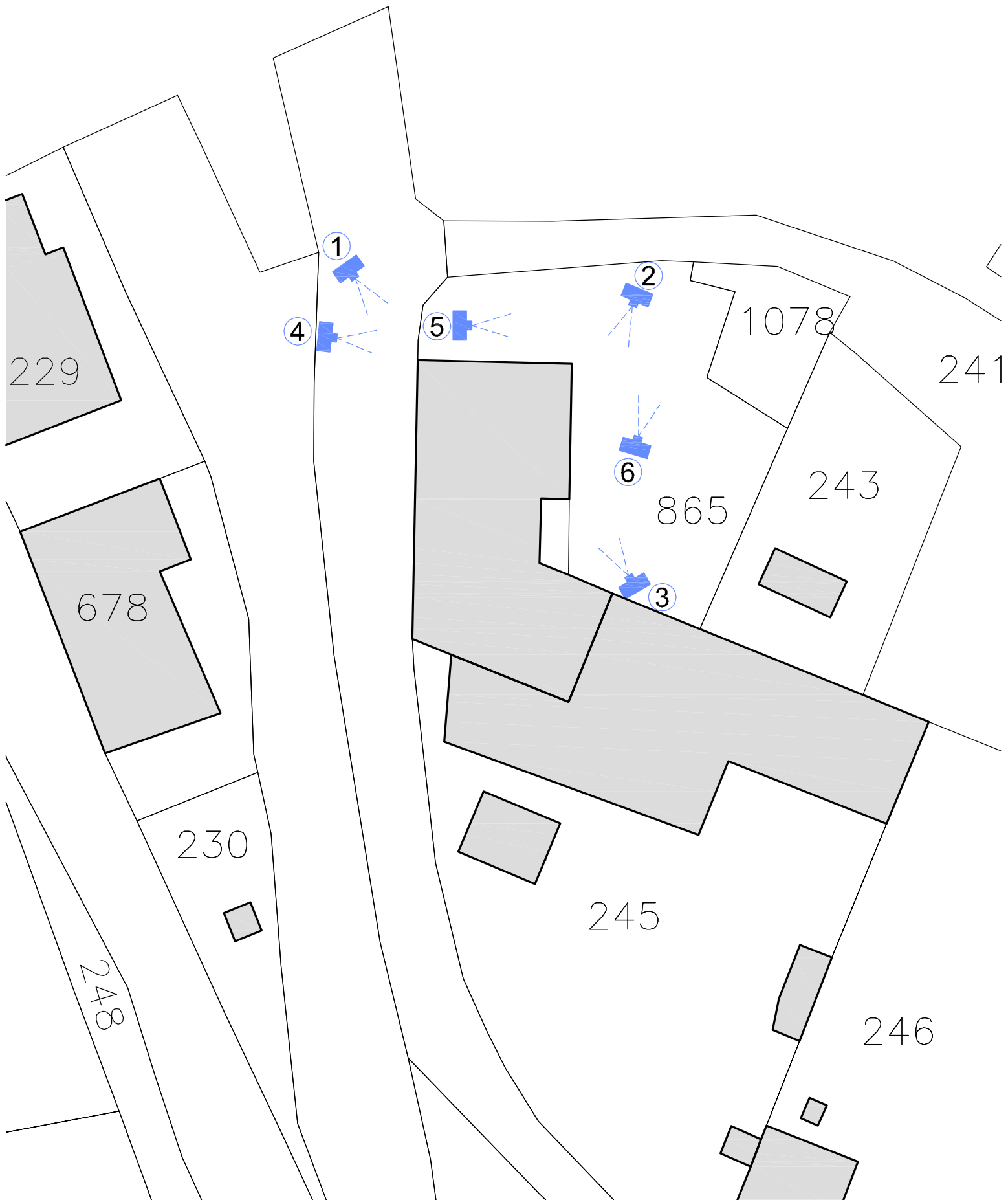




FOTO 1



FOTO 2



FOTO 3



FOTO 4



FOTO 5



FOTO 6



FOTO 7



FOTO 8



FOTO 9



FOTO 10

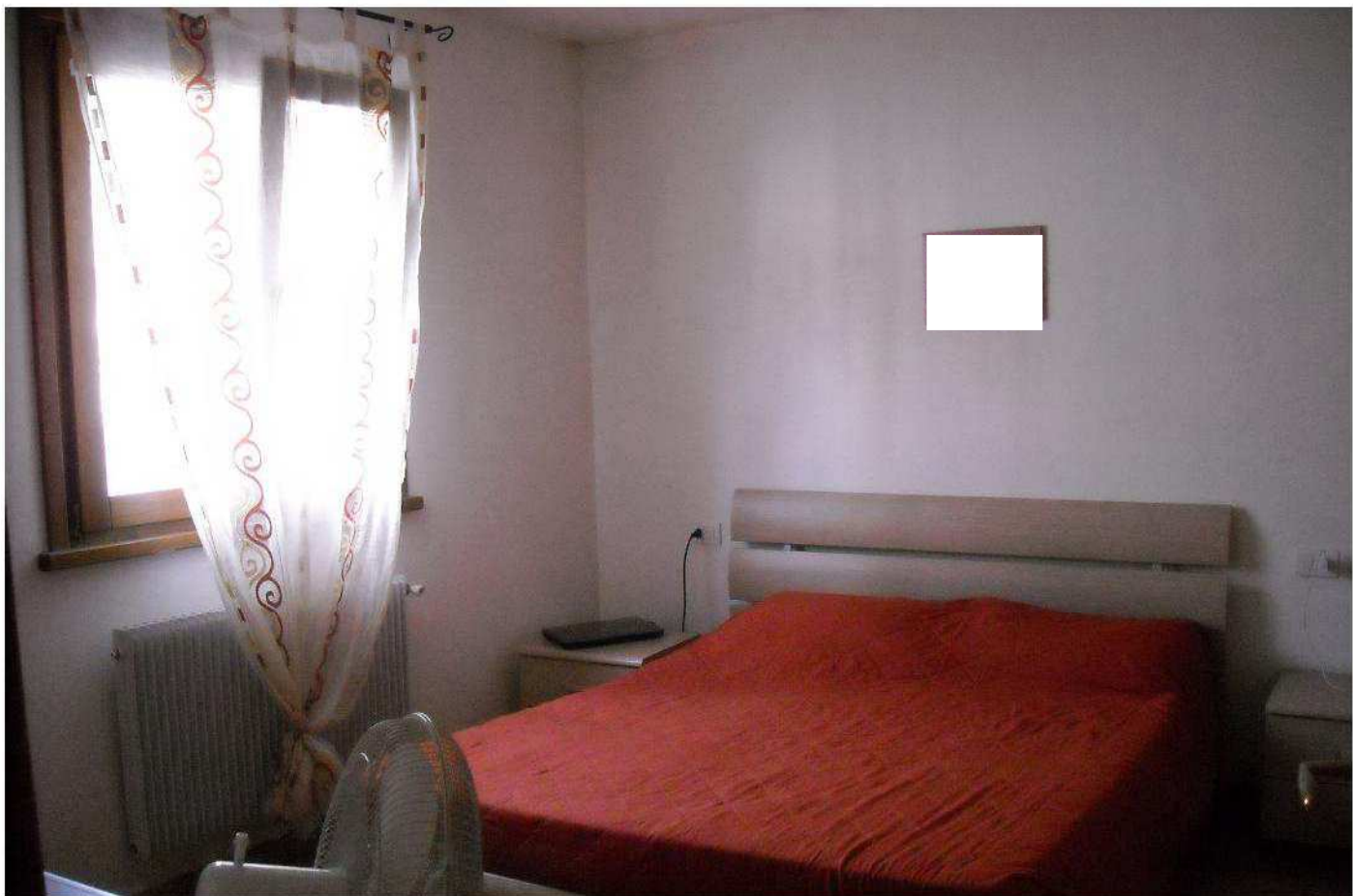


FOTO 11

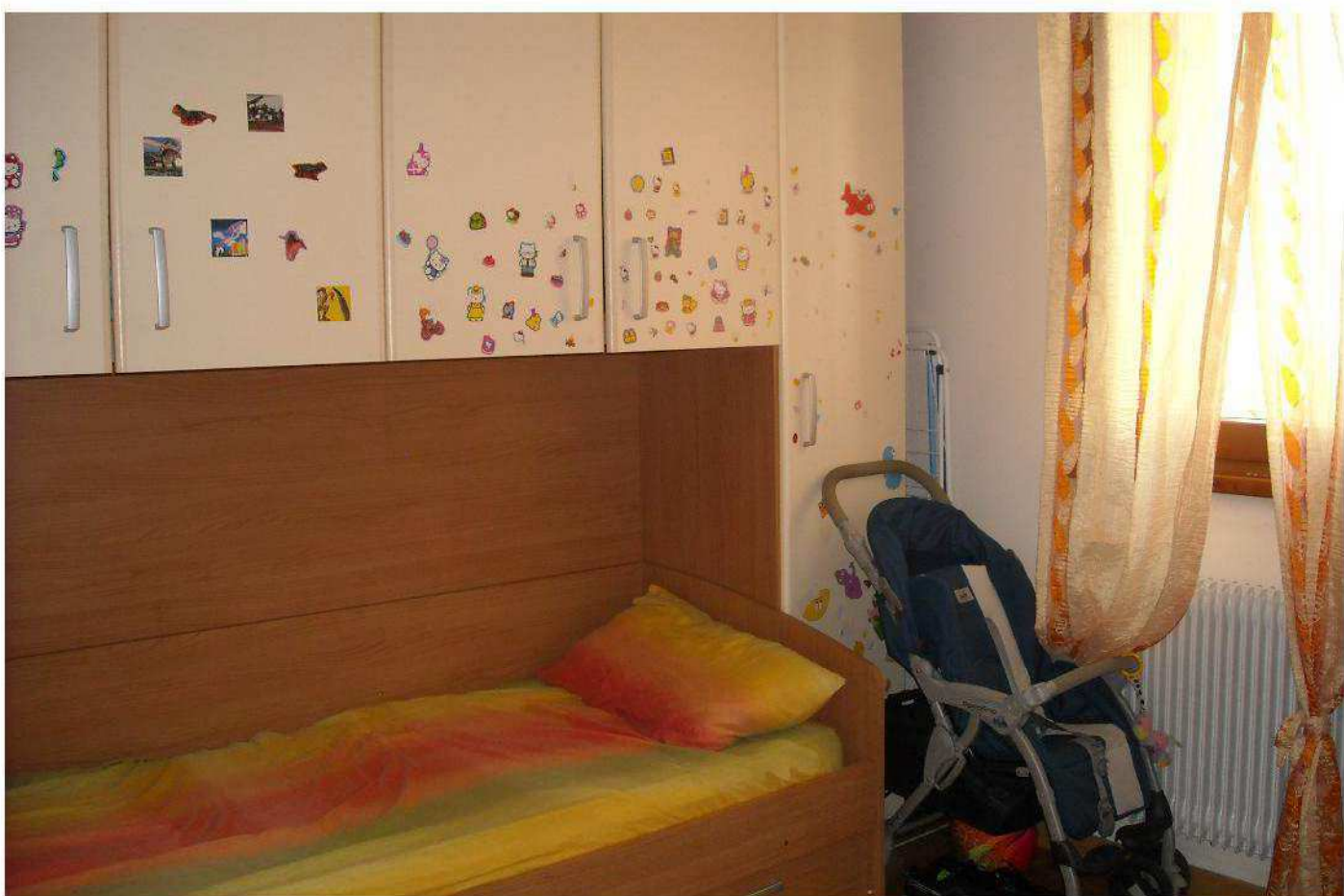


FOTO 12



FOTO 13

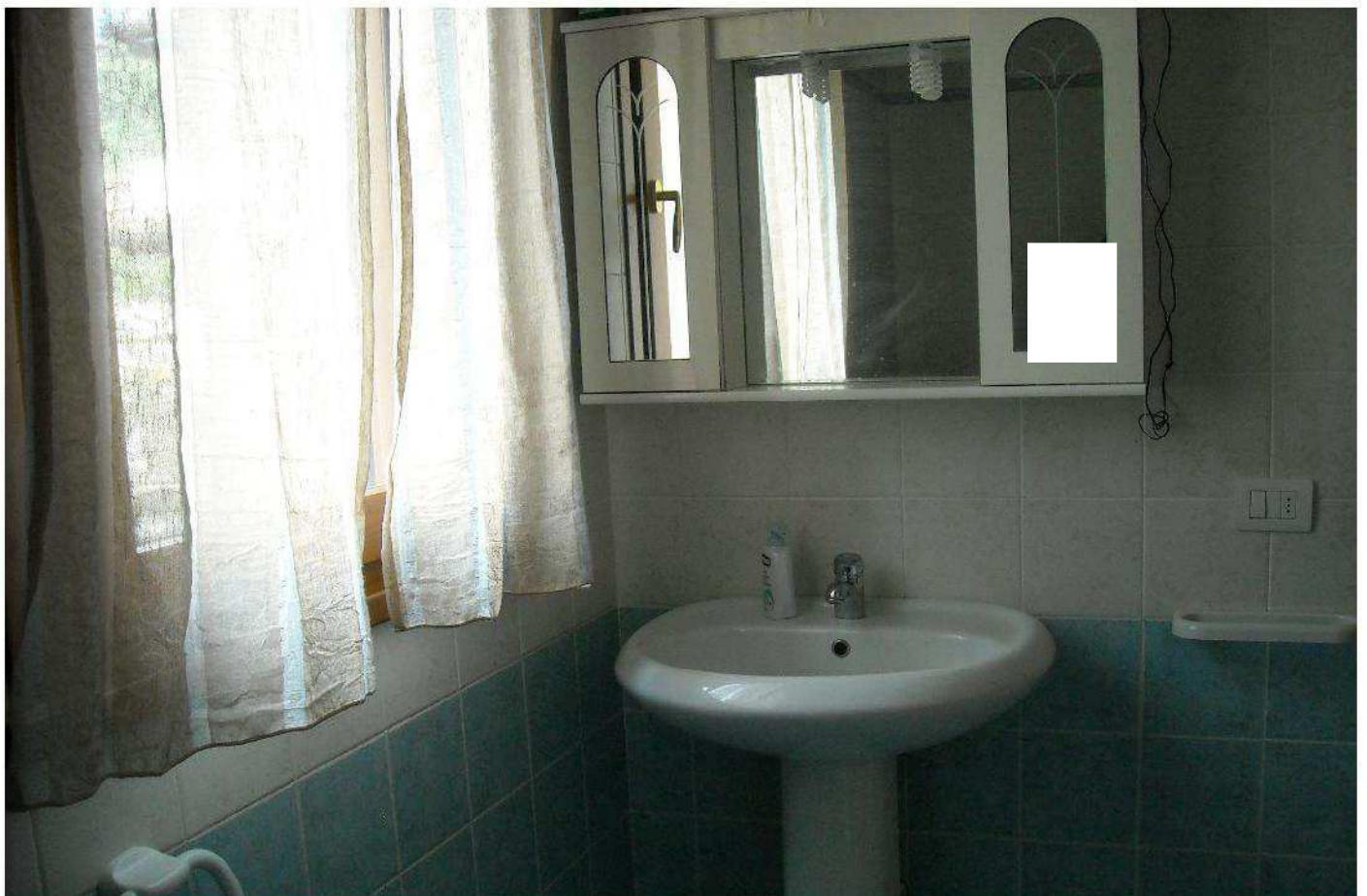


FOTO 14

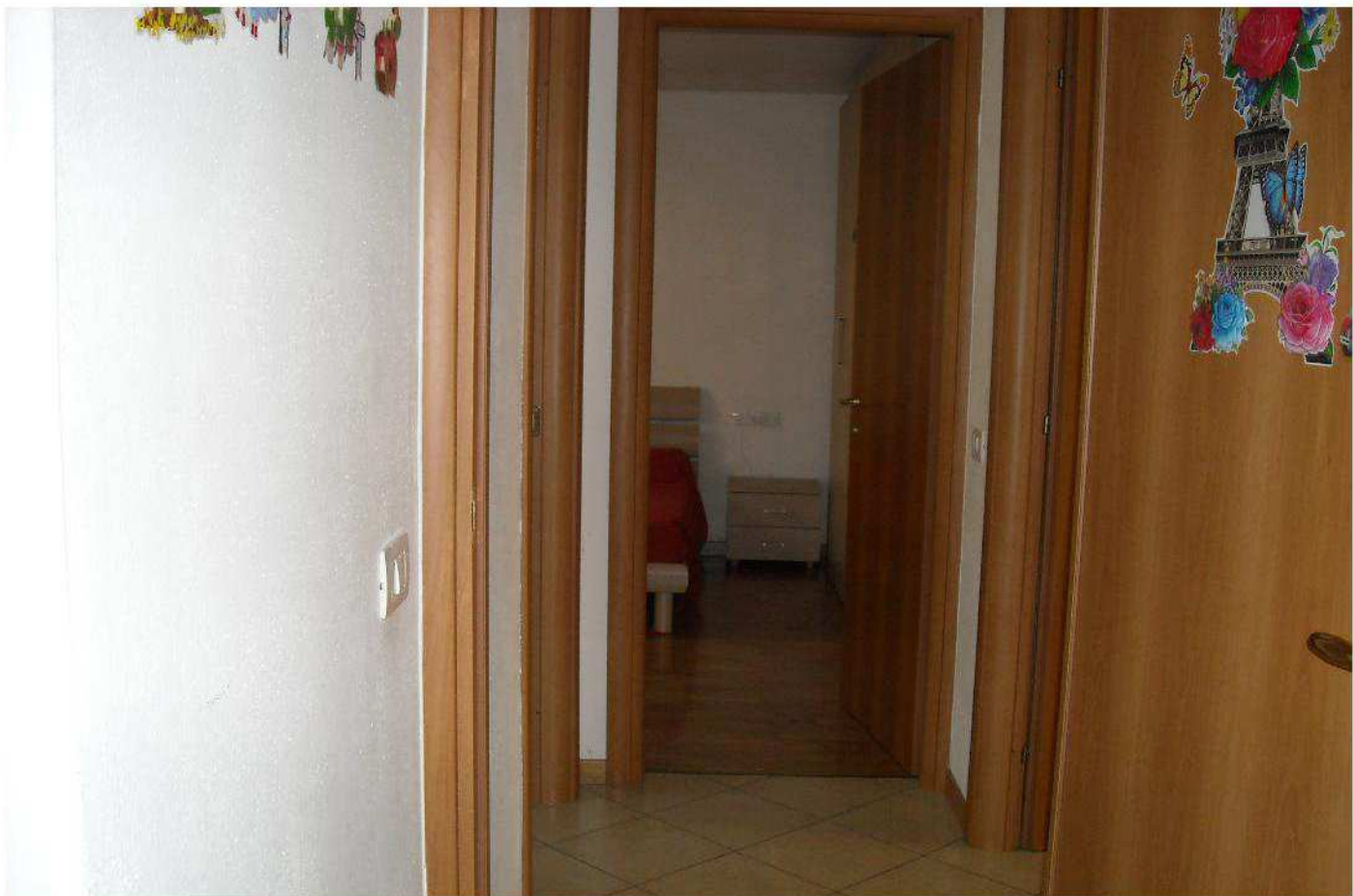


FOTO 15

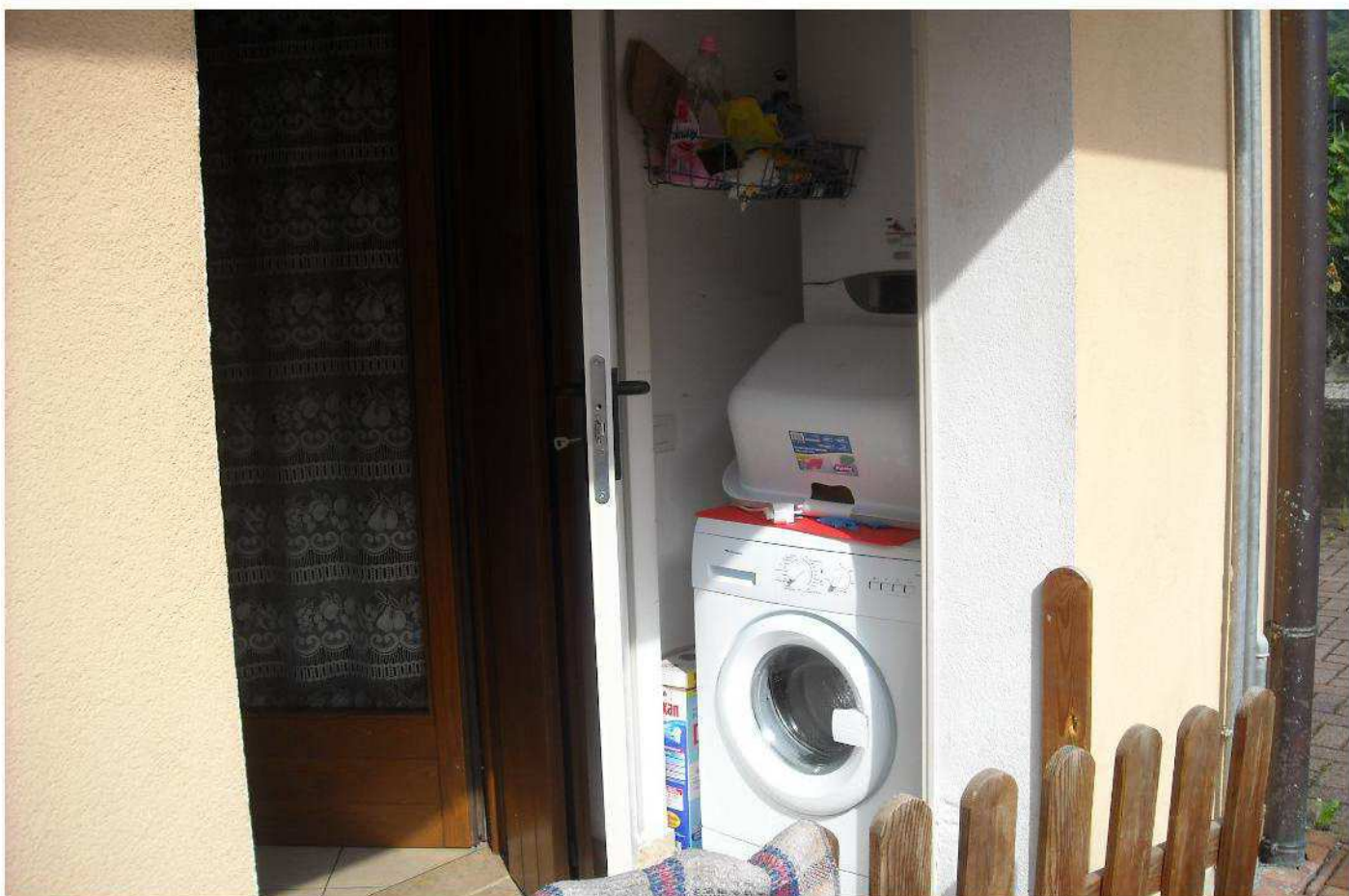


FOTO 16



FOTO 17



FOTO 18