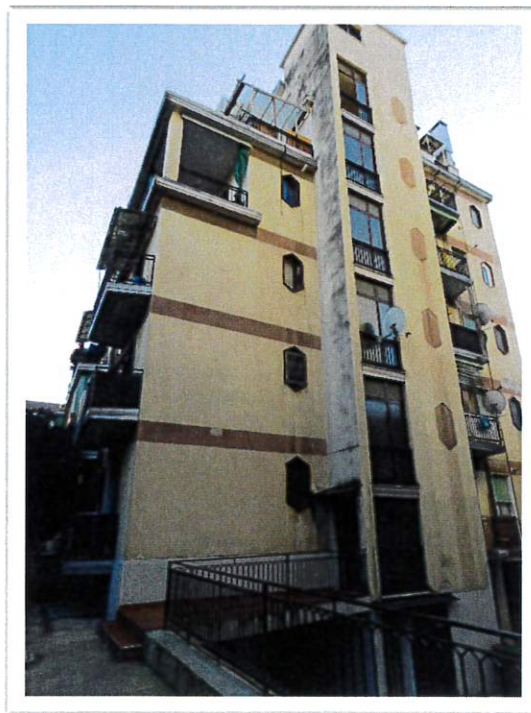


DOCUMENTAZIONE FOTOGRAFICA

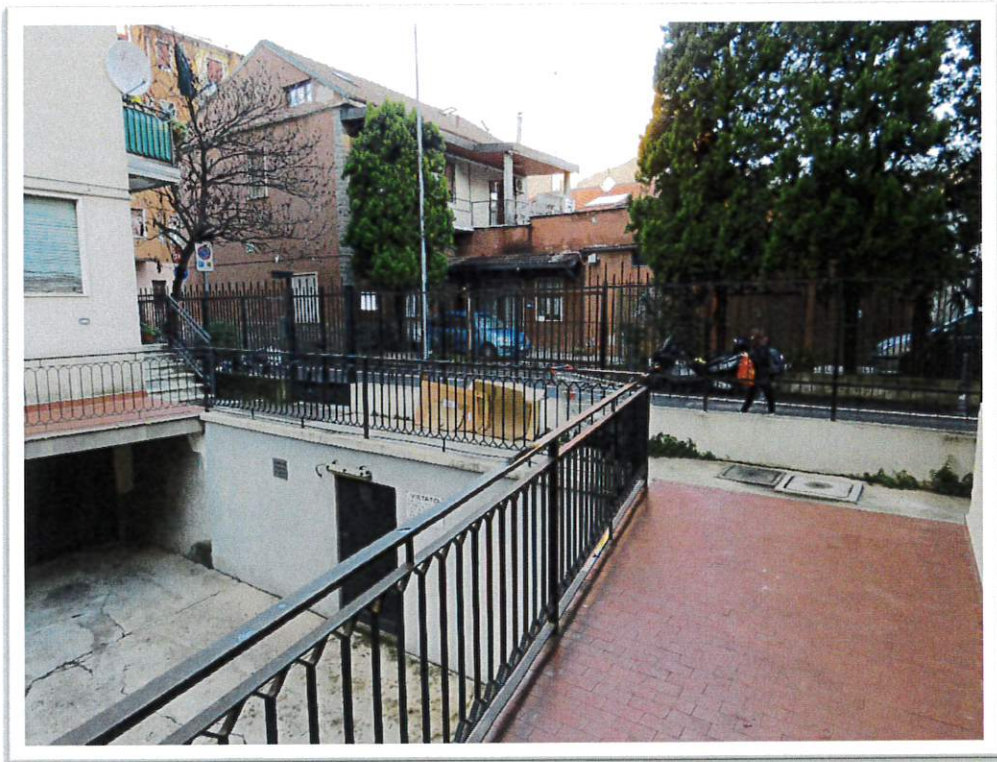
Via Pordenone, 2/4

Baranzate (MI)



Vista della palazzina scala "B" e particolare dell'ingresso.





Il cortile e la palazzina scala "A" dove si trova la cantina.





Percorsi esterni comuni.





Particolare dell'ingresso e pianerottolo del 2° piano.



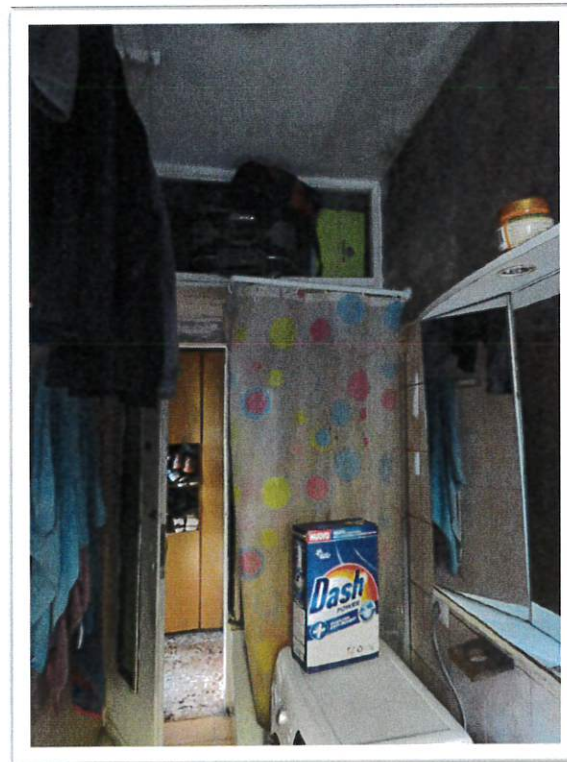


Disimpegno d'ingresso e cucina (sullo sfondo).



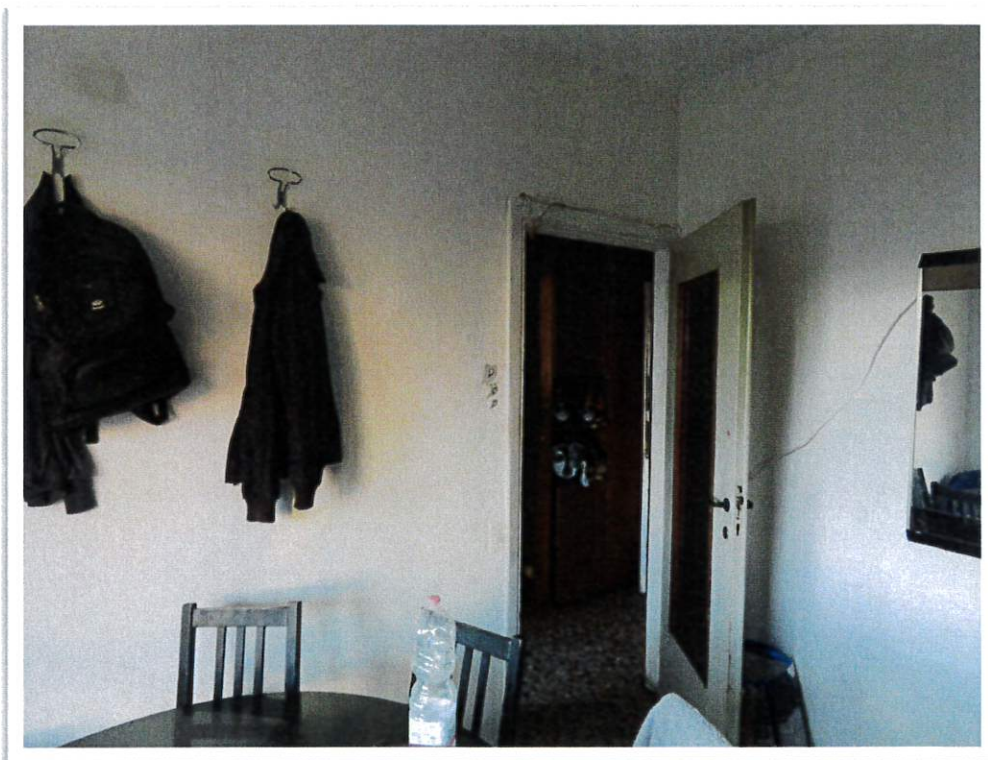


Bagno.



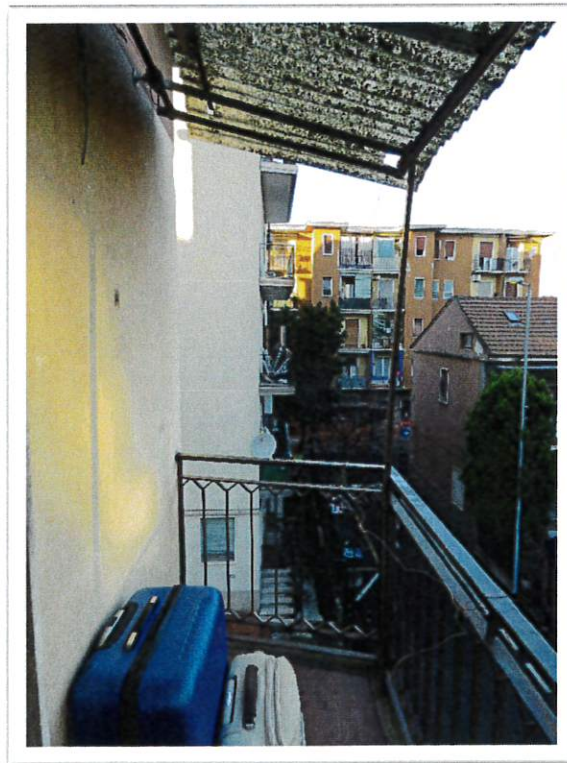


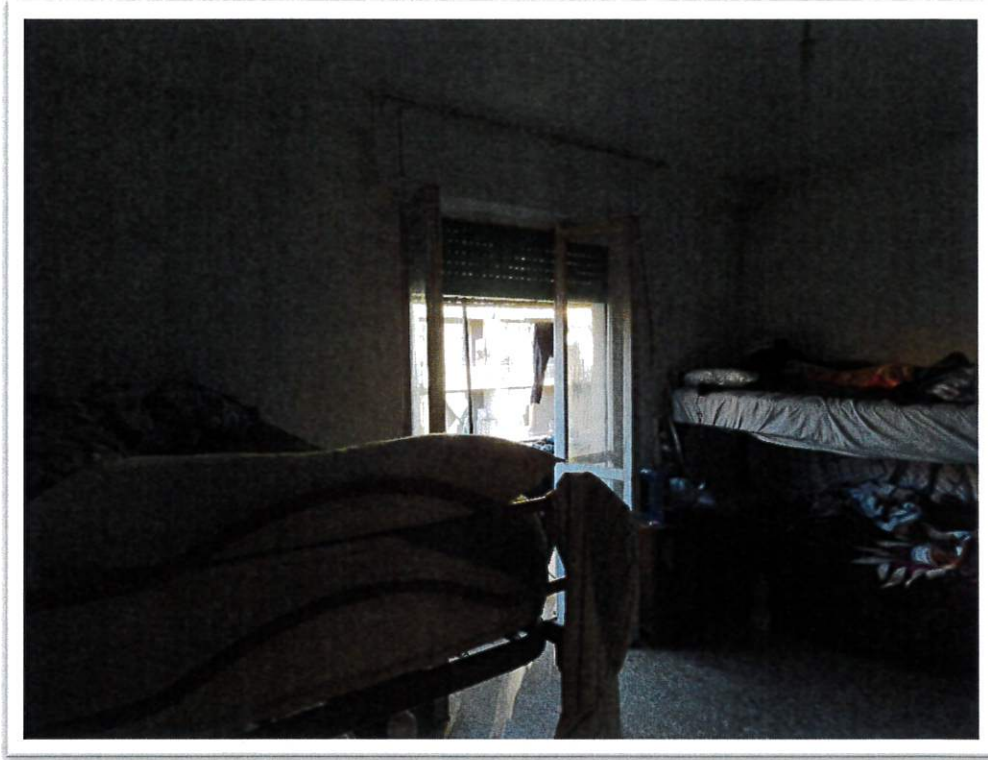
Camera 1.



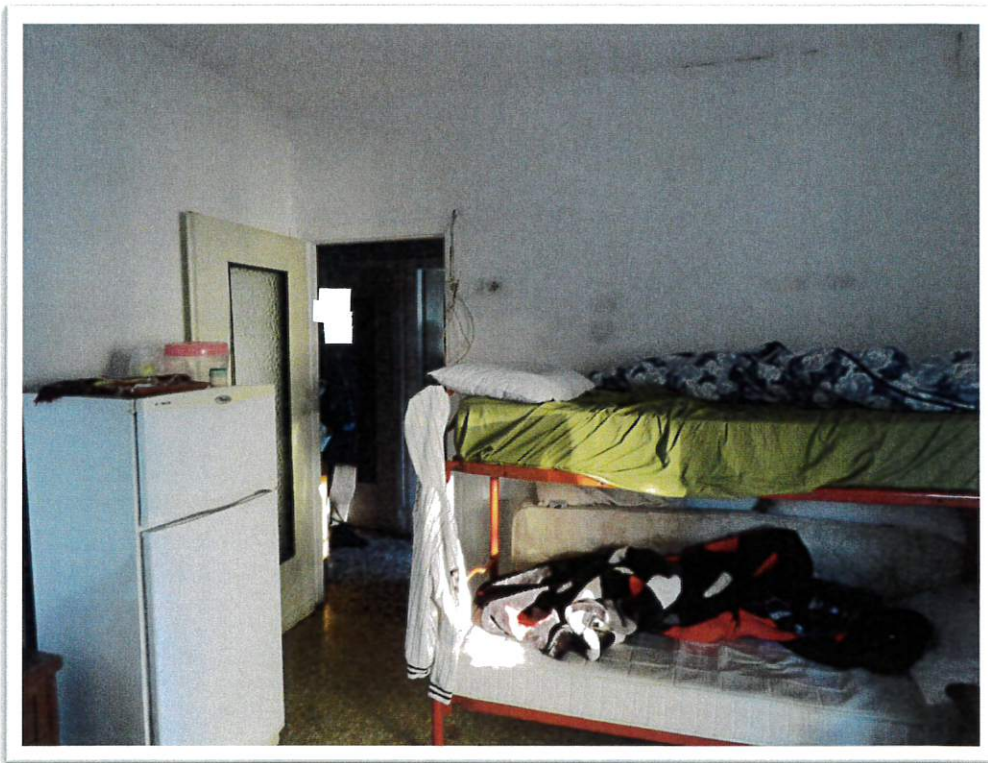


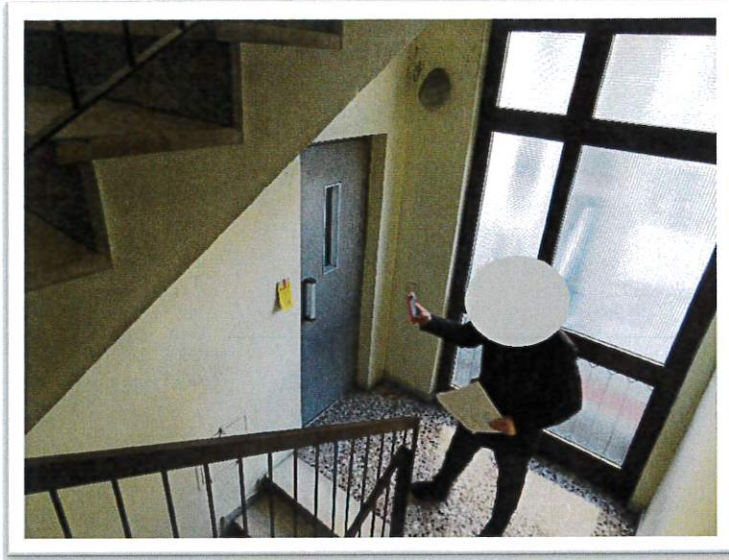
Balcone.





Camera 2.



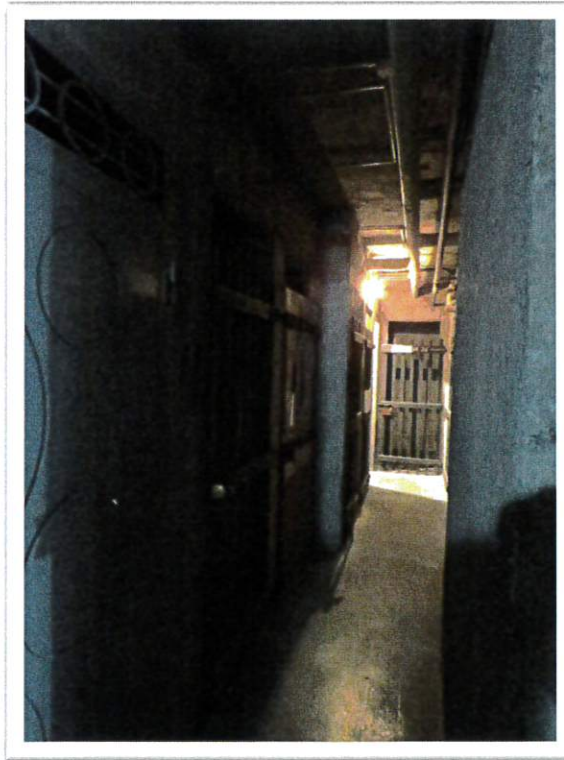


Pianerottolo ammezzato con ascensore.





Ingresso alla scala "B" e cantine.





La cantina vista da fuori.

