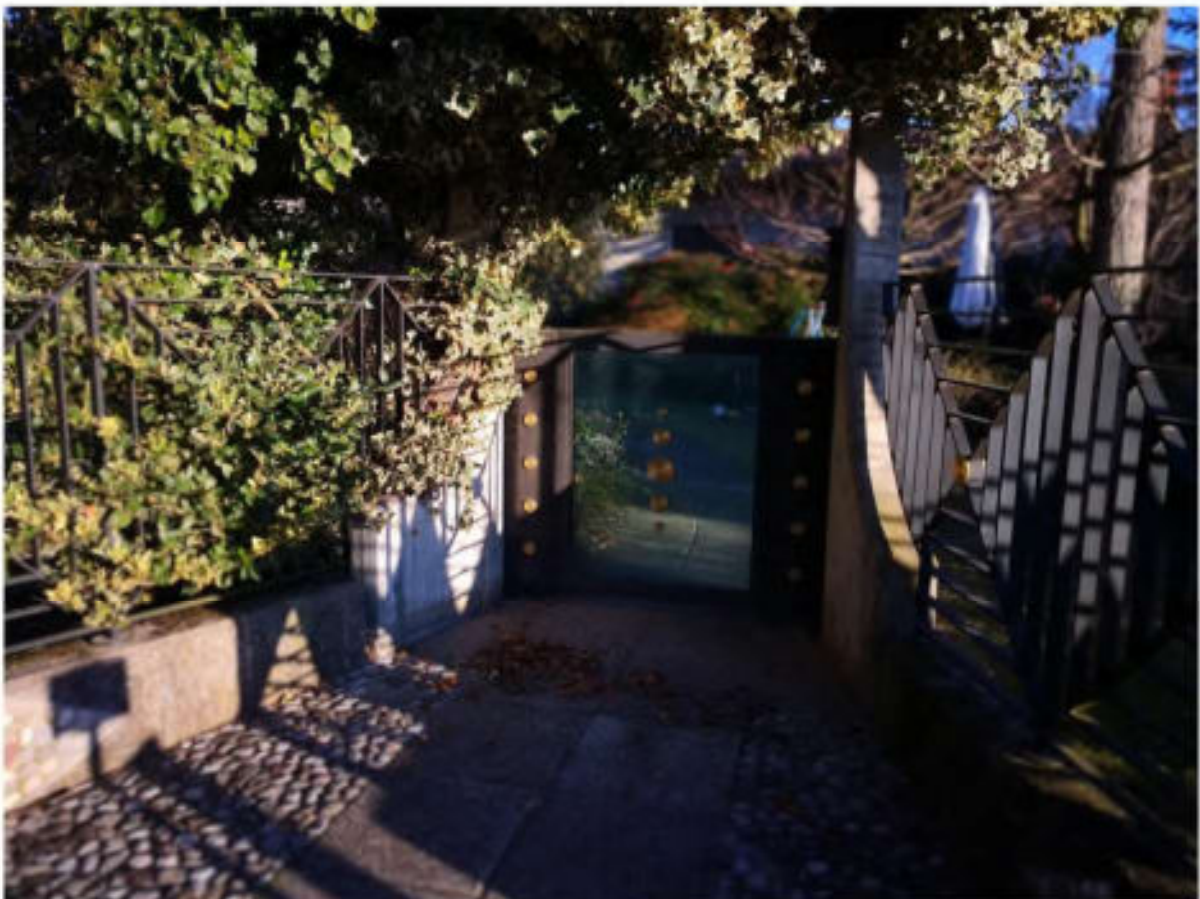


DOCUMENTAZIONE FOTOGRAFICA

LOTTO 1



**1.1 Ingresso pedonale**



**1.2 ingresso pedonale**





**1.3 giardino frontale corte esclusiva**

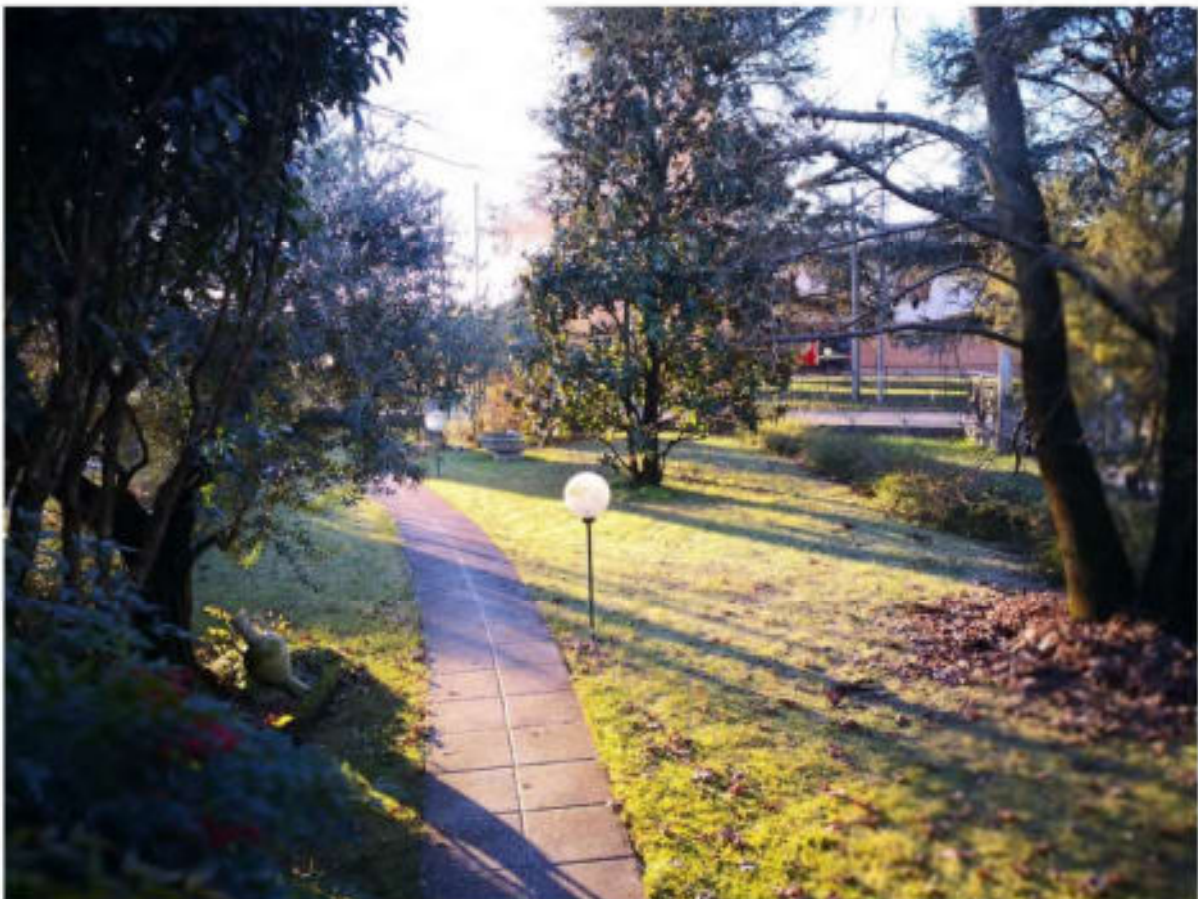


**1.4 fronte abitazione**





**1.5 fronte abitazione**



**1.6 giardino corte esclusiva fronte**





**1.7 retro abitazione su terreno comune**



**1.8 retro abitazione**



**1.9 terreno comune**



**1.10 terreno comune**





**1.11 terreno comune**



**1.12 terreno comune**



**1.13 accesso comune**



**1.14 vasca itticoltura**





1.15 pozzo artesiano



1.16 terreno comune



**1.17 terreno comune**



**1.18 tettoia su vasca itticoltura**



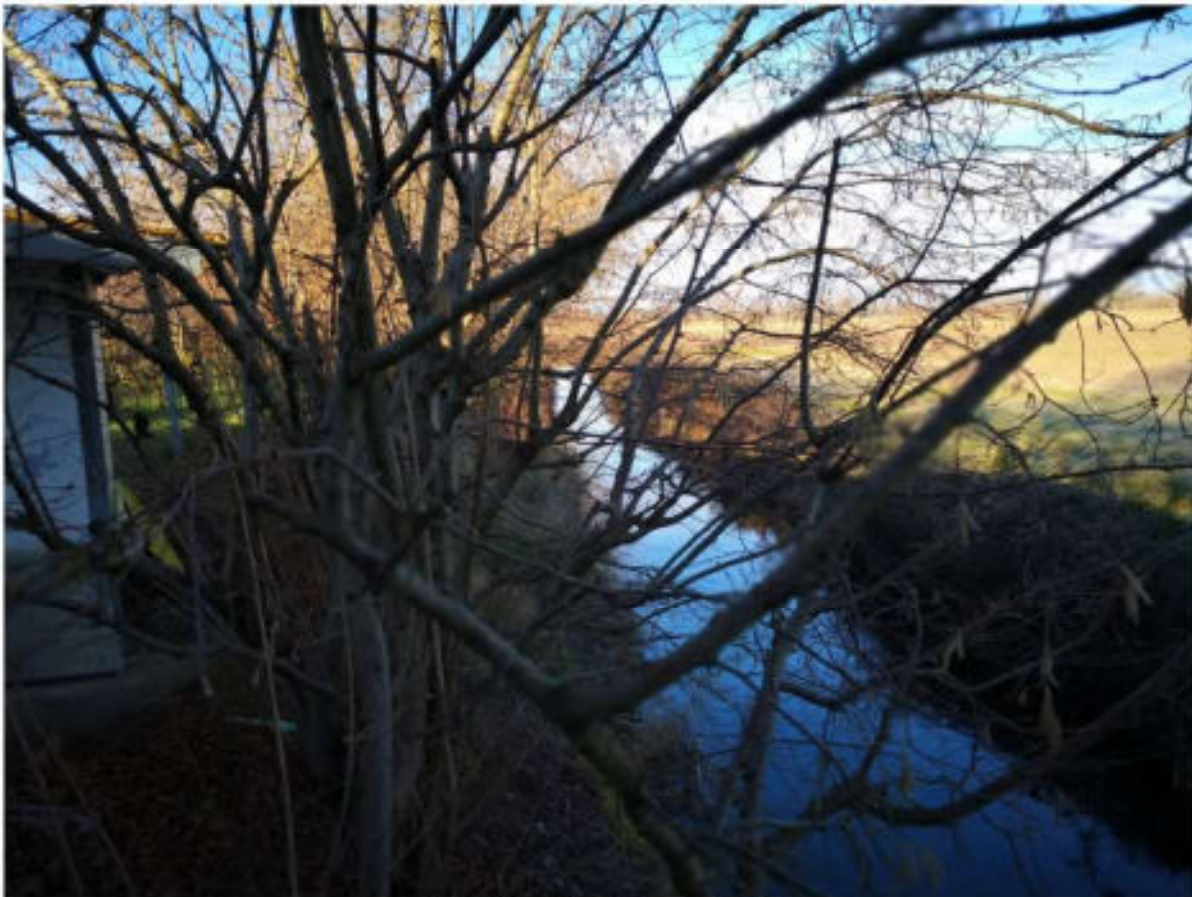


**1.19 terreno comune**



**1.20 corso d'acqua confinante**





1.21 corso d'acqua confinante



1.22 corso d'acqua confinante





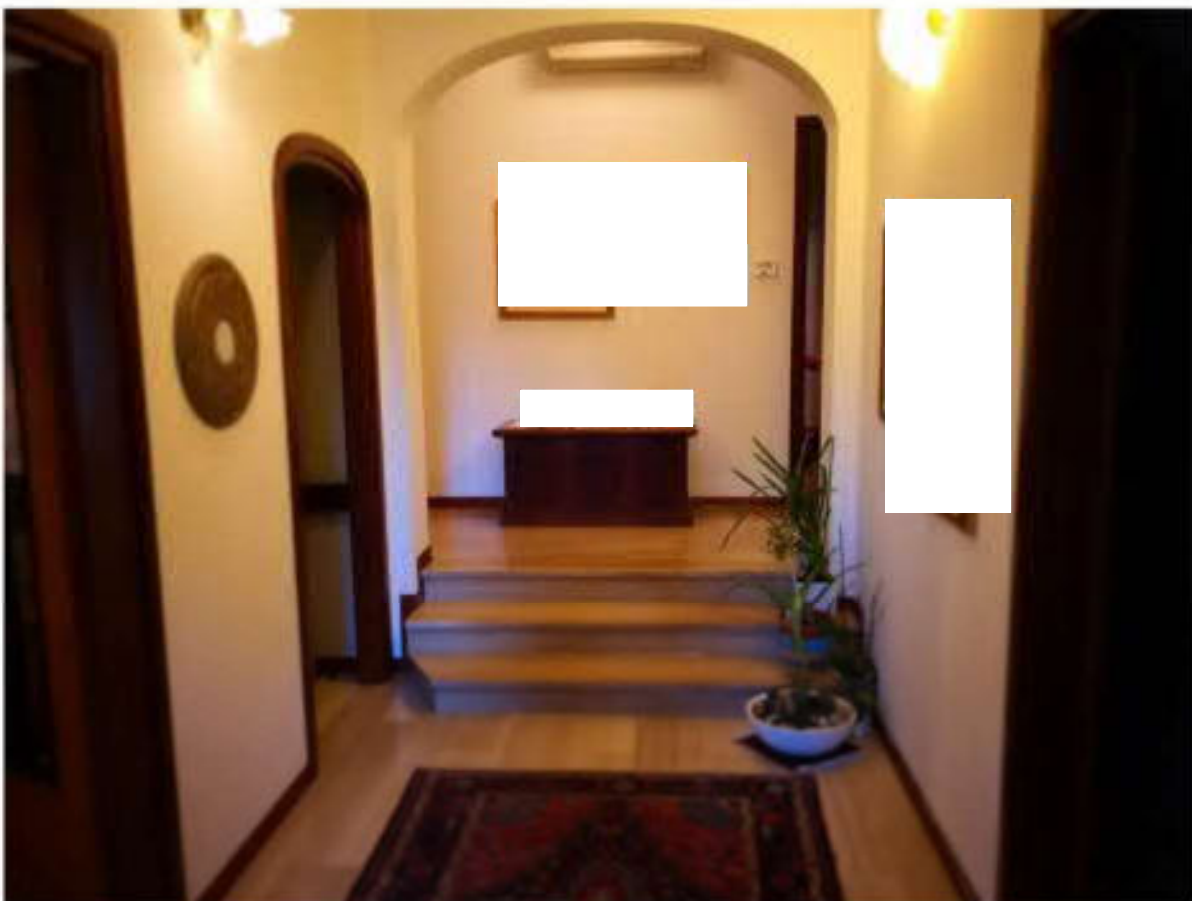
1.23 scarico acque reflue



1.24 vasca itticoltura

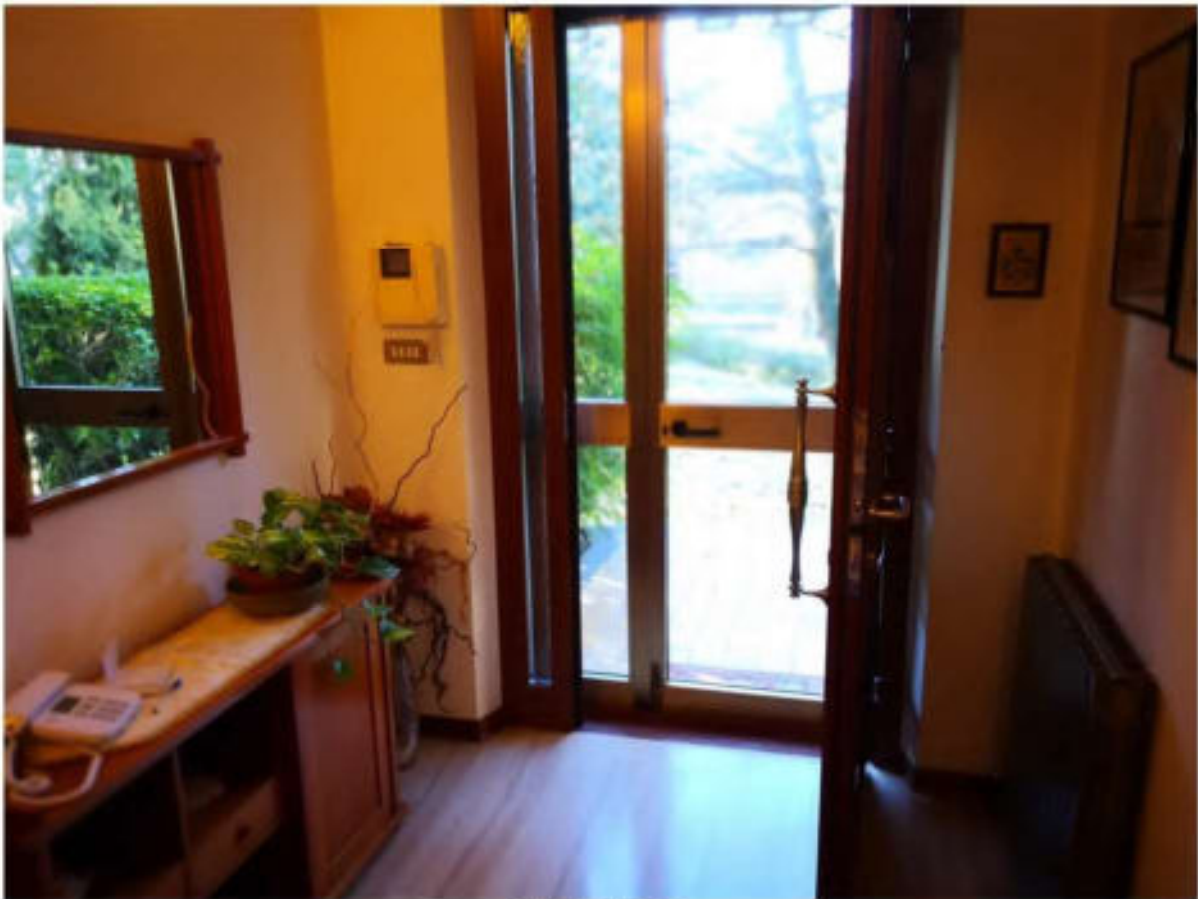


1.25 accesso promiscuo

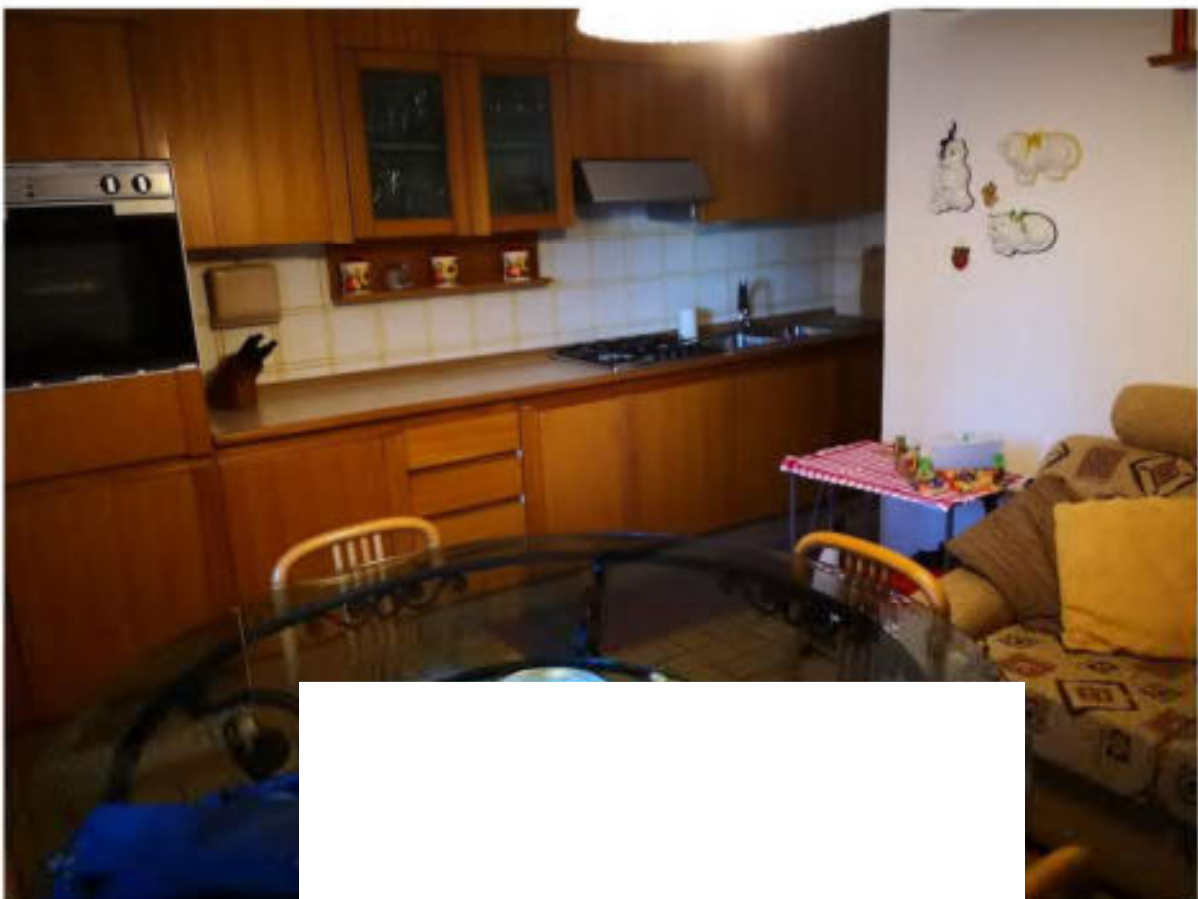


1.26 ingresso

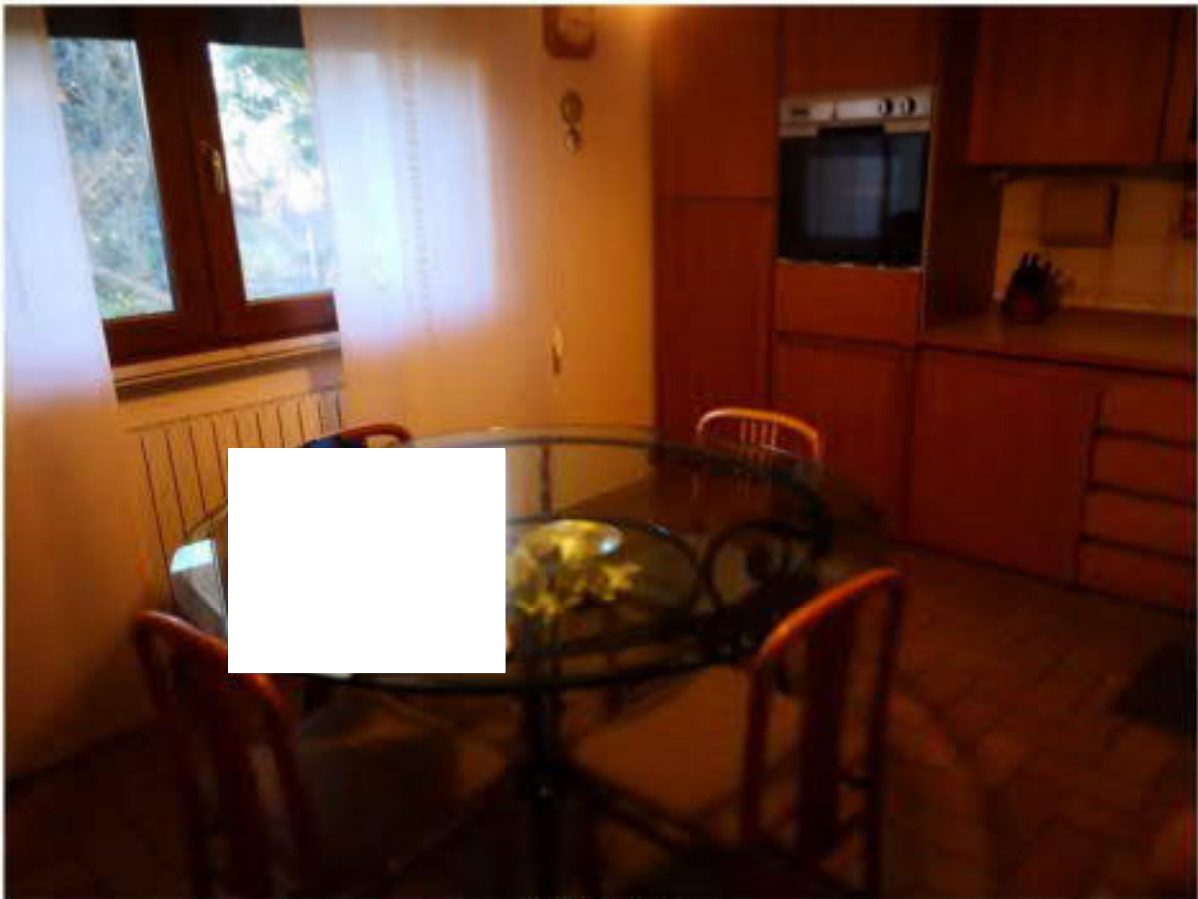




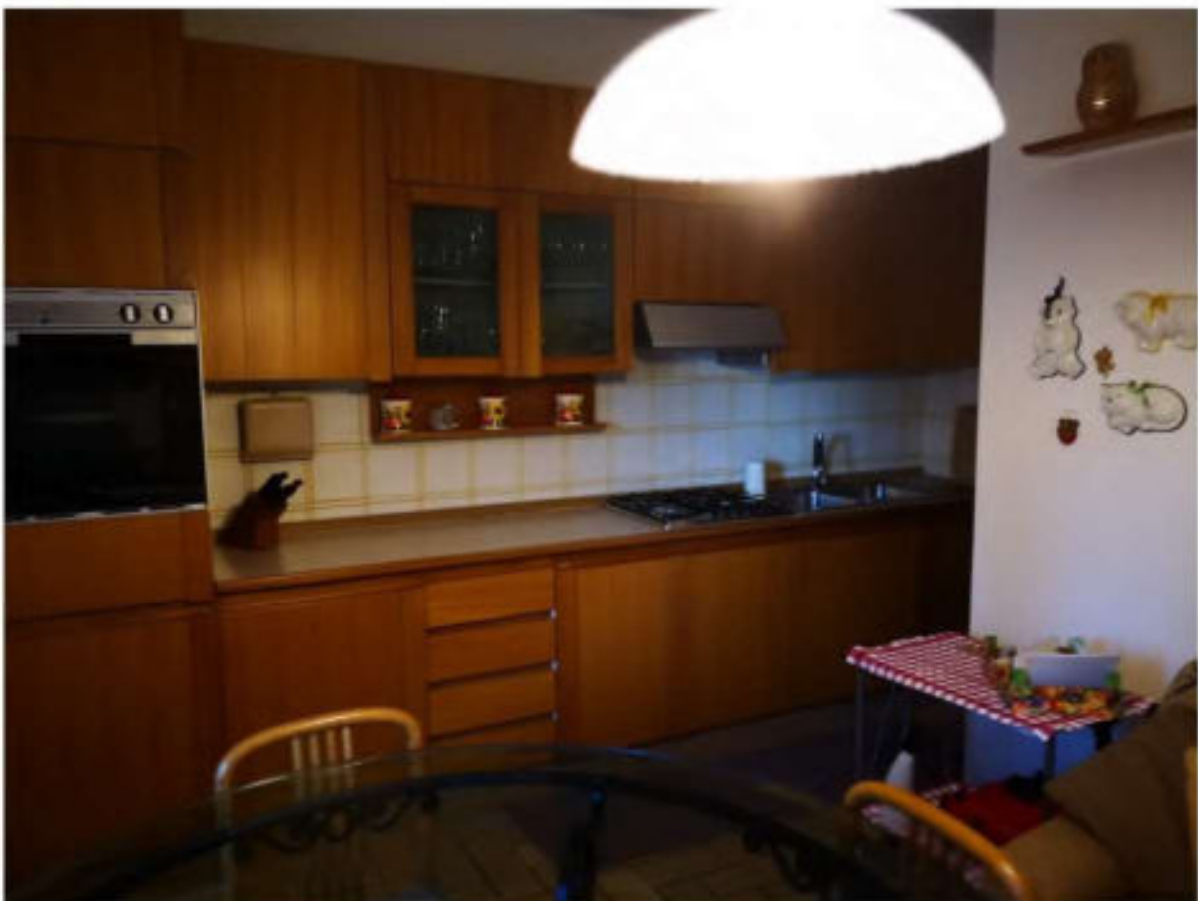
1.27 ingresso



1.28 cucina



1.29 cucina



1.30 cucina





1.31 disimpegno zona notte



1.32 disimpegno zona notte



1.33 soggiorno



1.34 soggiorno





1.35 camera matrimoniale



1.36 camera matrimoniale

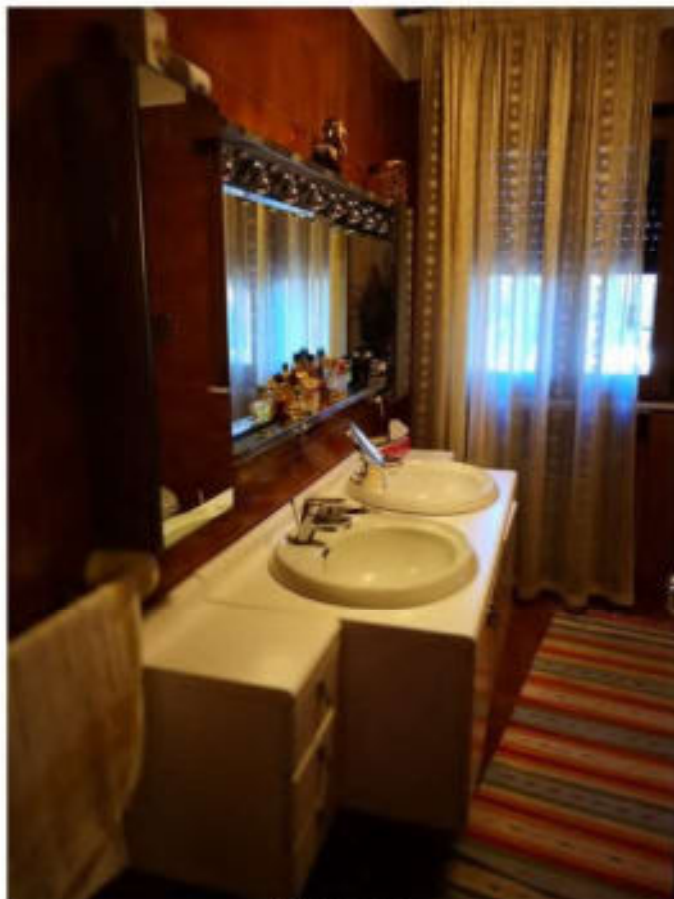


1.37 studio



1.38 studio





1.39 bagno



1.40 bagno



1.41 bagno

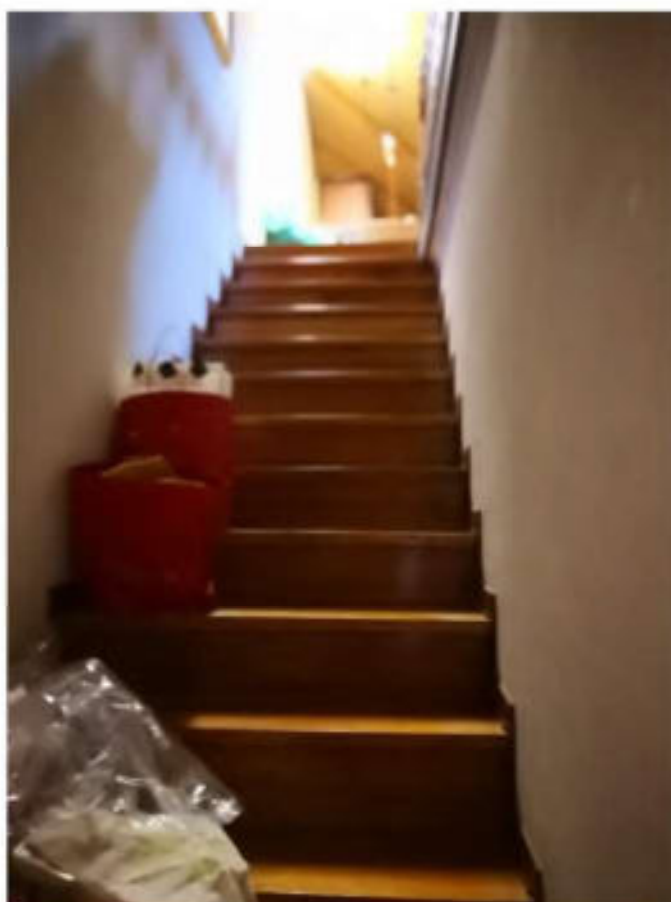


1.42 camera





1.43 camera



1.44 scala soffitta



1.45 soffitta



1.46 soffitta





1.47 soffitta



1.48 soffitta



1.49 soffitta



1.50 soffitta





**1.51** scala al piano interrato



**1.52** cantina



1.53 cantina



1.54 autorimessa





**1.55 autorimessa**



**1.56 corridoio piano interrato**



**1.57 centrale termica e autoclave**



**1.58 bagno al piano interrato**

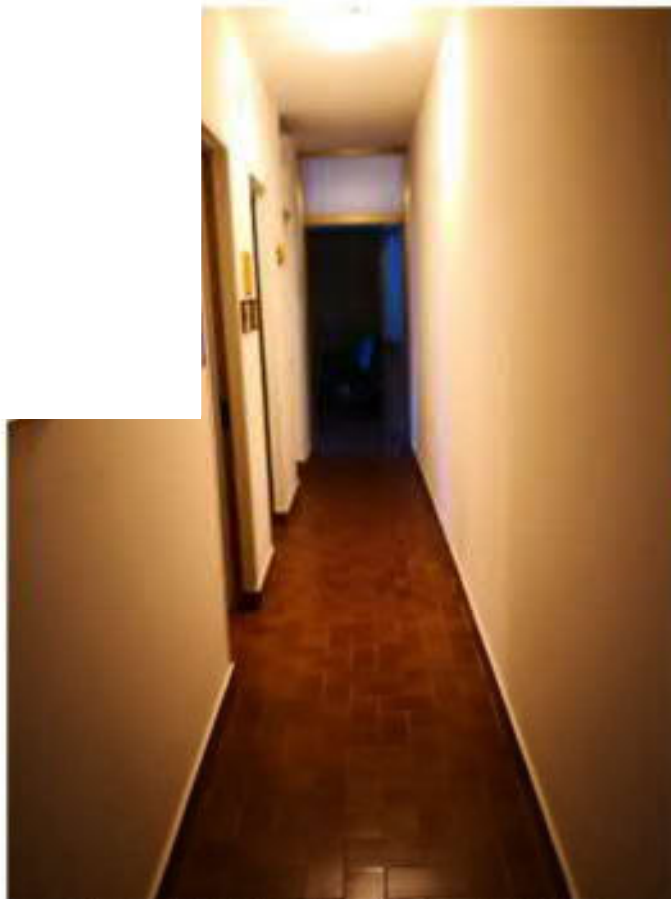


1.59 bagno al piano interrato



1.60 lavanderia al piano interrato





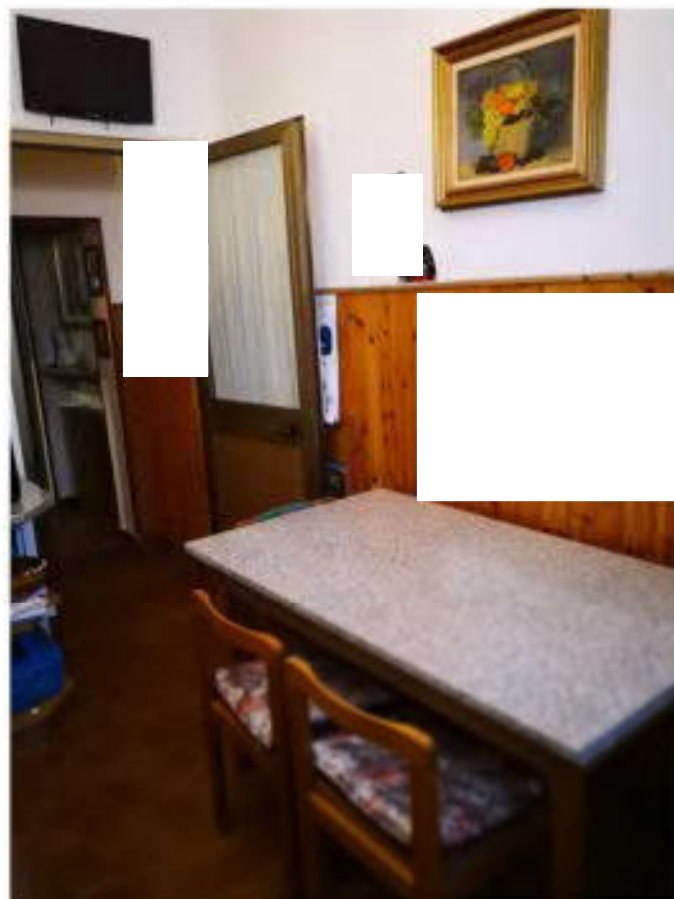
**1.61 corridioio interrato verso autorimessa**



**1.62 cucina al piano interrato**



1.63 cucina al piano interrato



1.64 cucina al piano interrato



1.65 dimpegno scala piano interrato



1.66 taverna interrato





1.67 taverna interrato



1.68 taverna interrato



1.69 pozzetti cisterna gasolio



1.70 sado e raccolta acque reflue