

MILANO – VIA ALDINI, 28/A
DATA SOPRALLUOGO 24/01/2020 + 03/02/2020
APPARTAMENTO - FG. 31, PART. 104, SUB. 28



VIA A. ALDINI, 28 - FRONTE



VIA A. ALDINI, 28/A - CORPO INTERNO



SCALA 1



SCALE



PORTA INGRESSO



SOGGIORNO



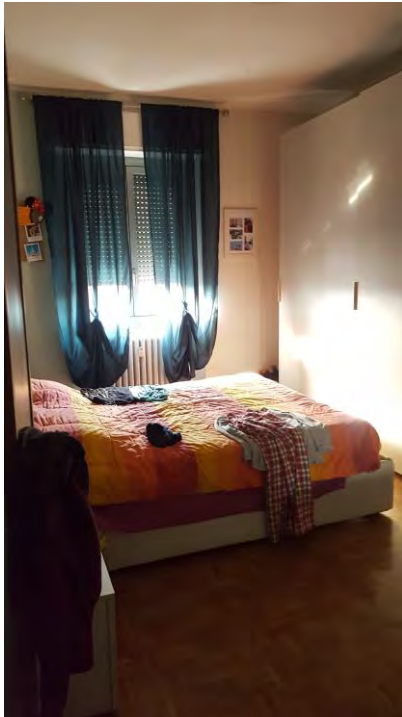
INGRESSO/CORRIDOIO



CUCINA



BAGNO



CAMERA



BAGNO



RIPOSTIGLIO



BALCONE



SOLAIO



SOLAIO



ASCENSORE

APPARTAMENTO - FG. 31, PART. 104, SUB. 706 + BOX SUB 10



VIA A. ALDINI, 28 - FRONTE



VIA A. ALDINI, 28/A - CORPO INTERNO



SCALA 1



SCALE



PORTA INGRESSO



INGRESSO/CORRIDOIO



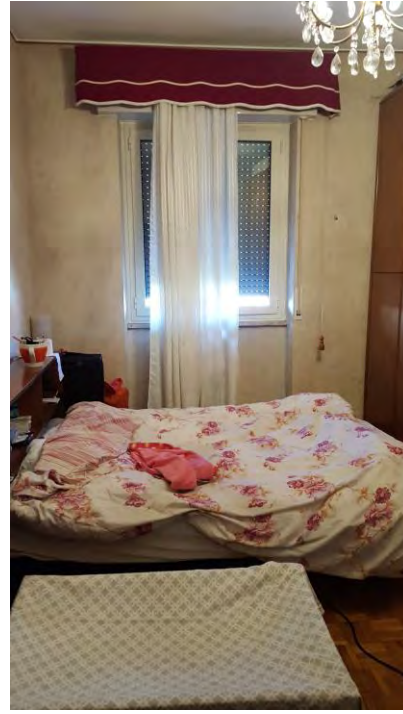
SOGGIORNO



CUCINA



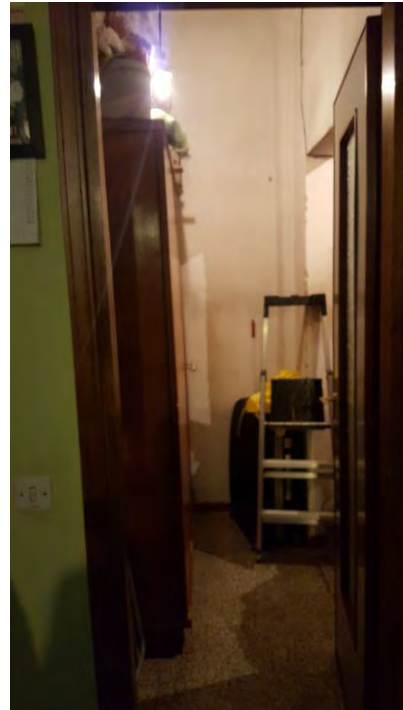
BAGNO



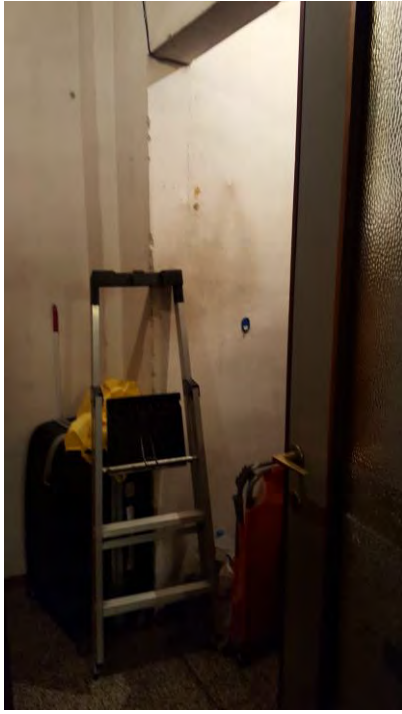
CAMERA 1



CAMERA 2



RIPOSTIGLIO 1



RIPOSTIGLIO 2



BALCONE 1



BALCONE 2



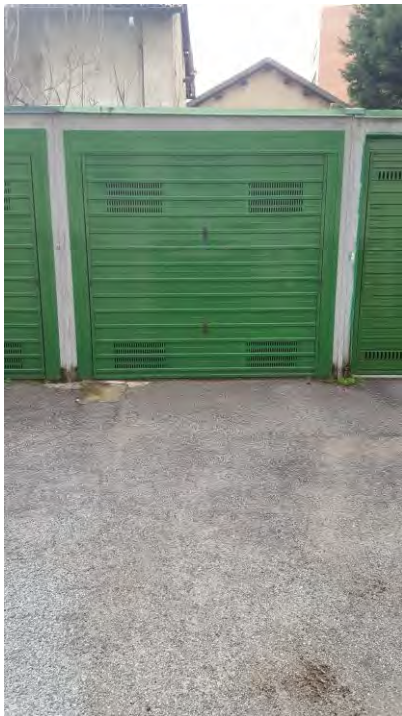
SOLAIO



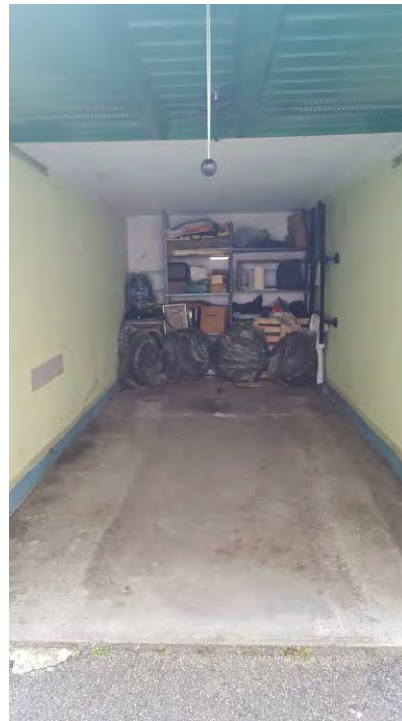
SOALIO



CORPO BOX



BOX 2UB 10



BOX