



Vaprio D'Adda- via Magenta 7
Vista del cortile interno ove è posta la u.i in questione

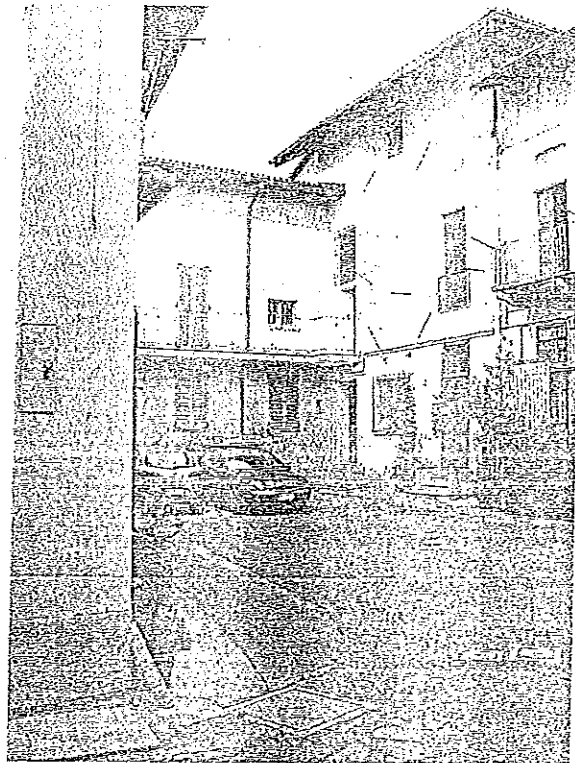


foto 01



foto 02

Vista della u.i., dal cortile interno



foto 03

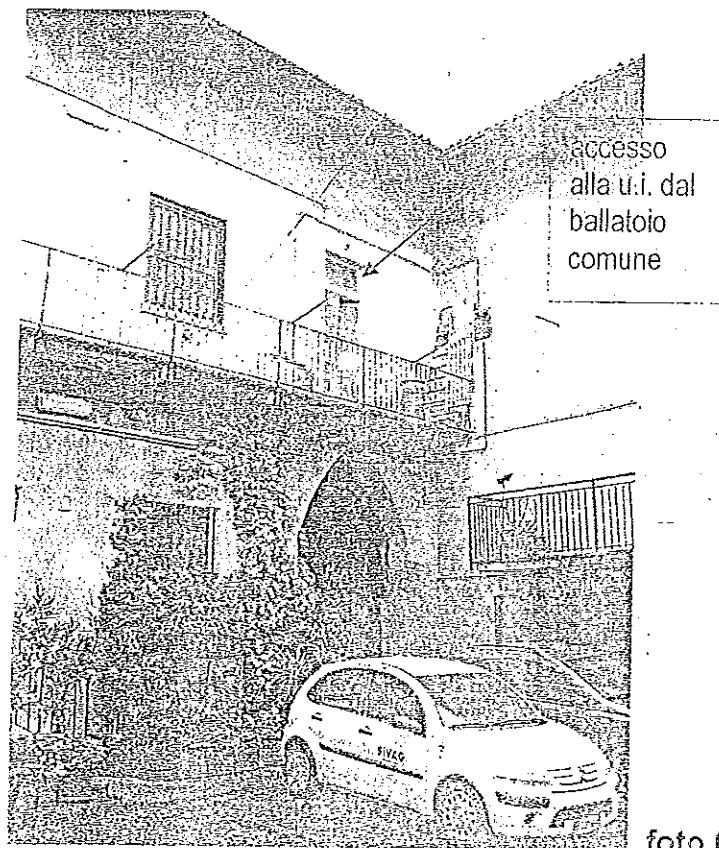


foto 04

Ingresso/soggiorno, con zona adibita a bagno



foto 05

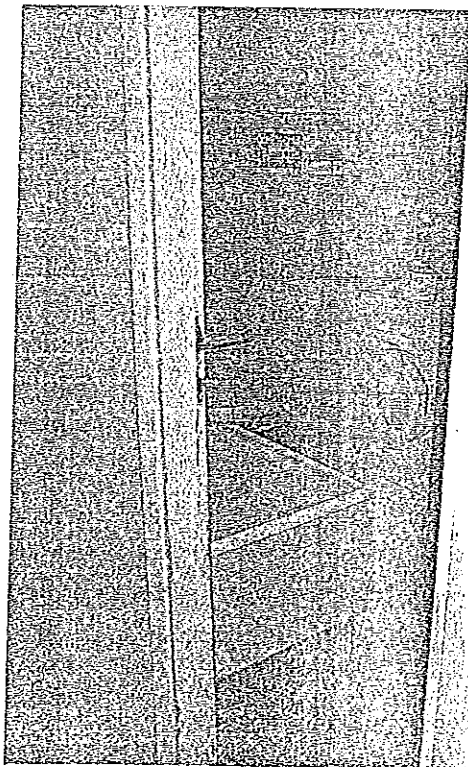


foto 06

Valentino Monaco

Particolare dei serramenti interni e della pavimentazione

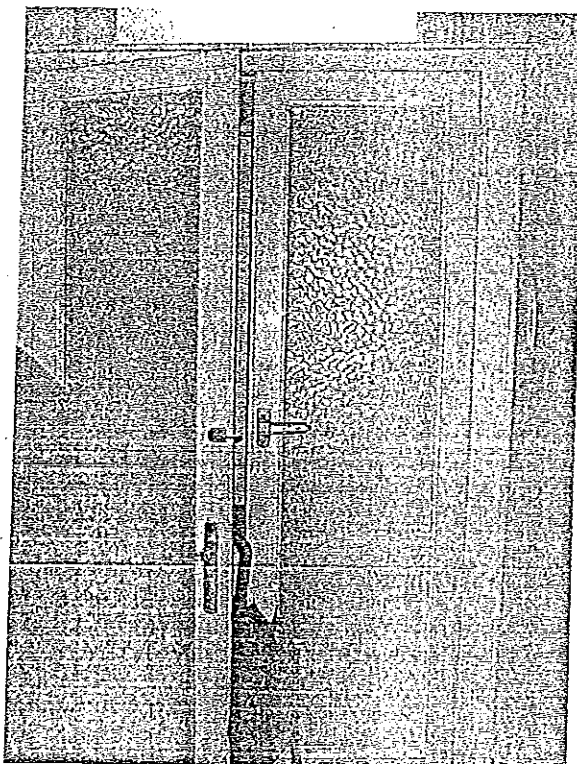


foto 07

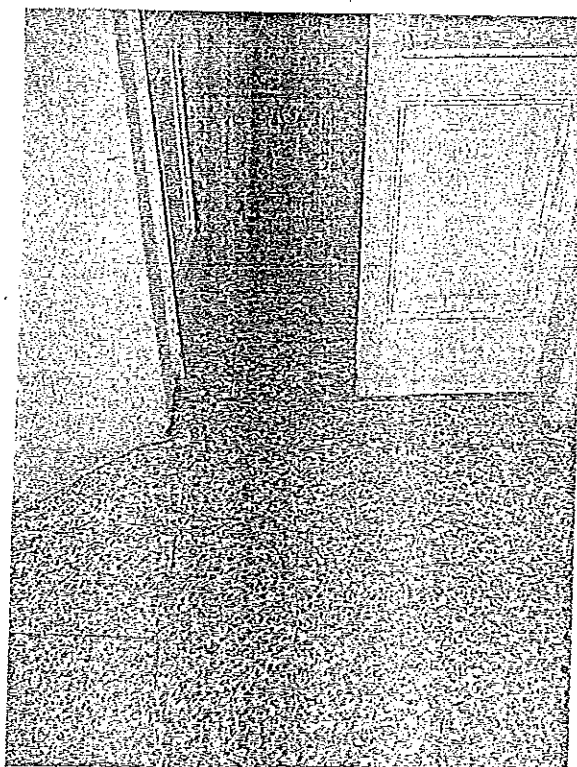


foto 03

Valentino Monaco

Altri particolari dell' interno: controsoffitto in pannelli di masonite ed impianto elettrico a vista, fuori norma e con un principio di cortocircuito

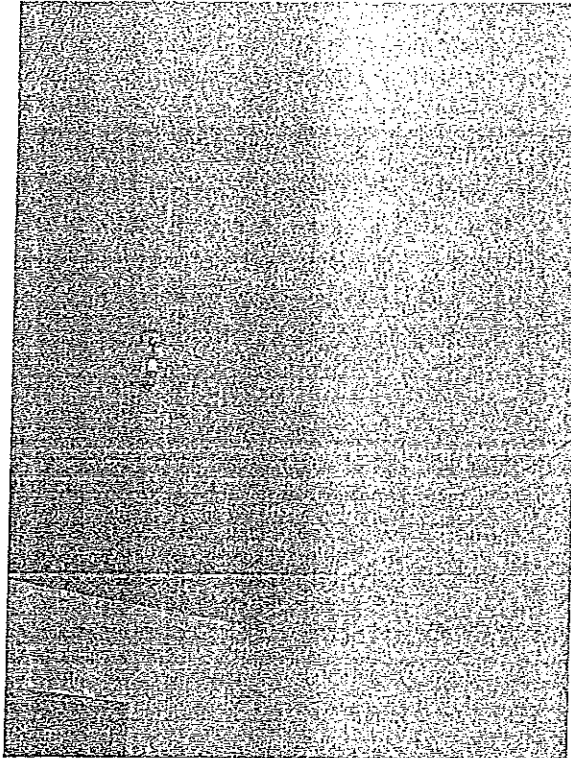


foto 09

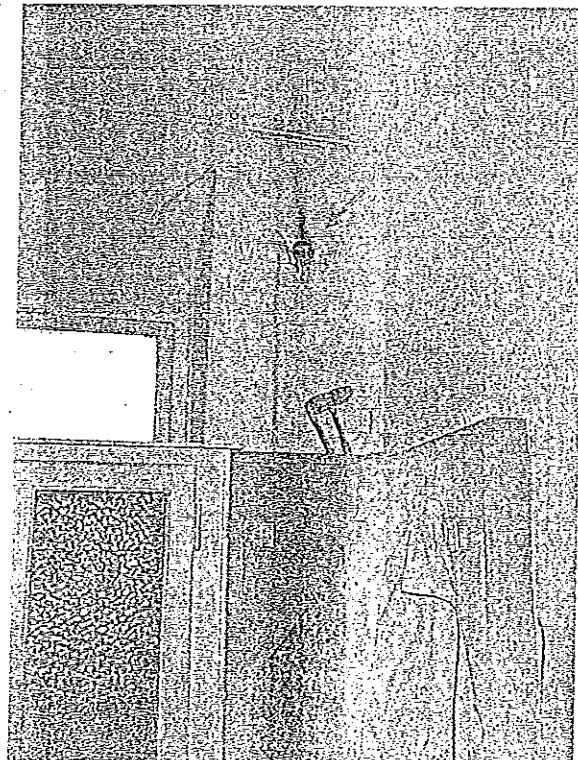


foto 10

Stato dell'impianto elettrico e del gas

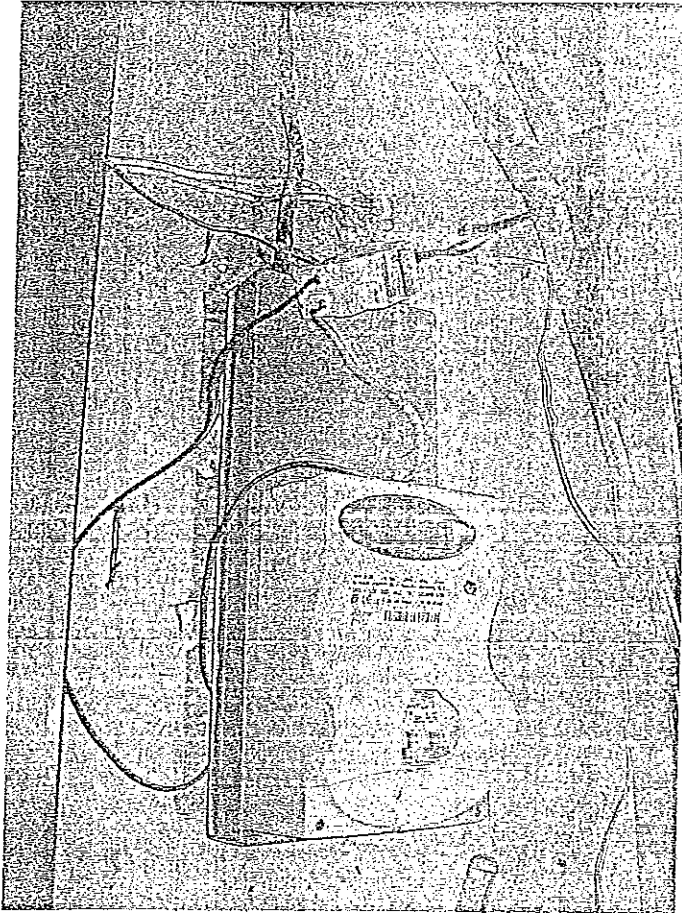


foto 11

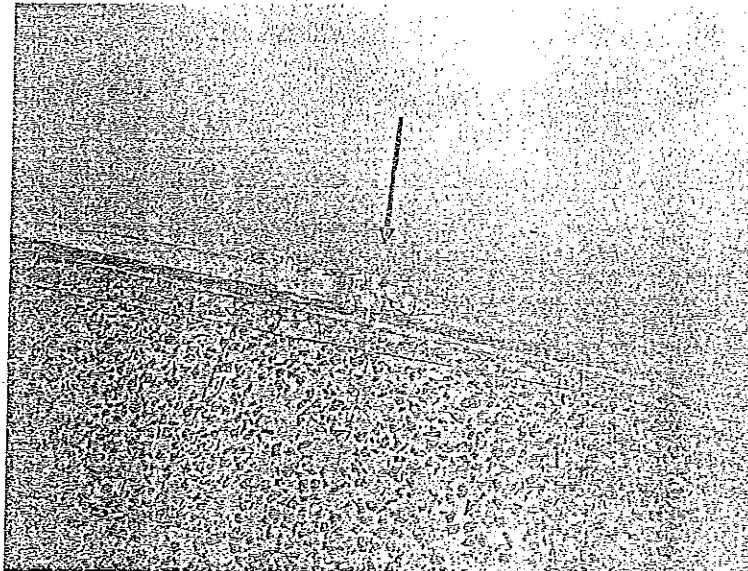


foto 12

Valentino Monaco

Condutture del gas, sotto pavimento, prive di controtubo areato e, contatore sigillato.

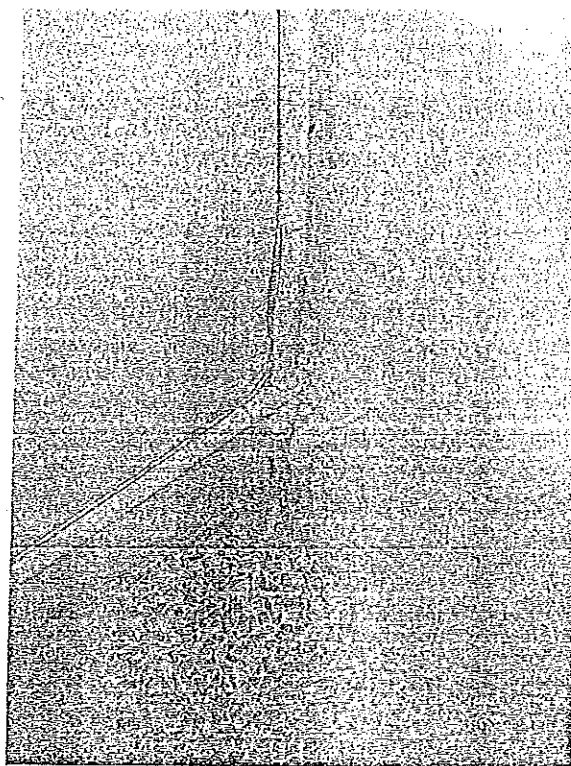


foto 13

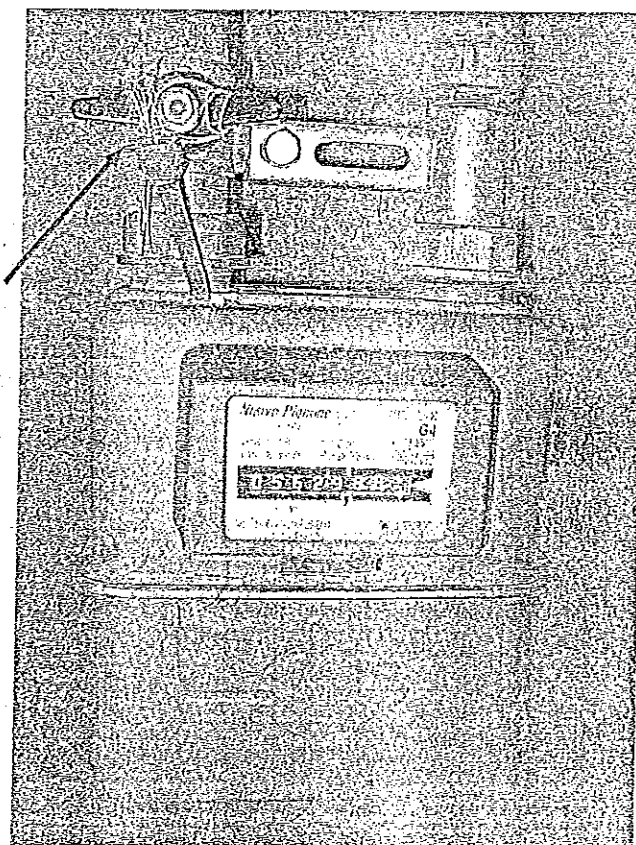


foto 14

Vano scala comune e scala, in legno, di accesso alle u.i. ed al sottotetto

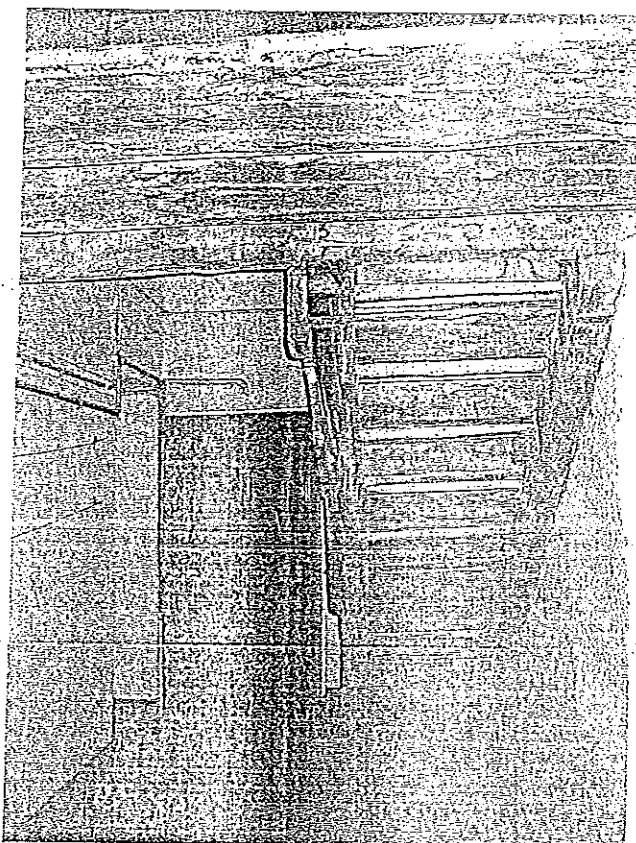


foto 15

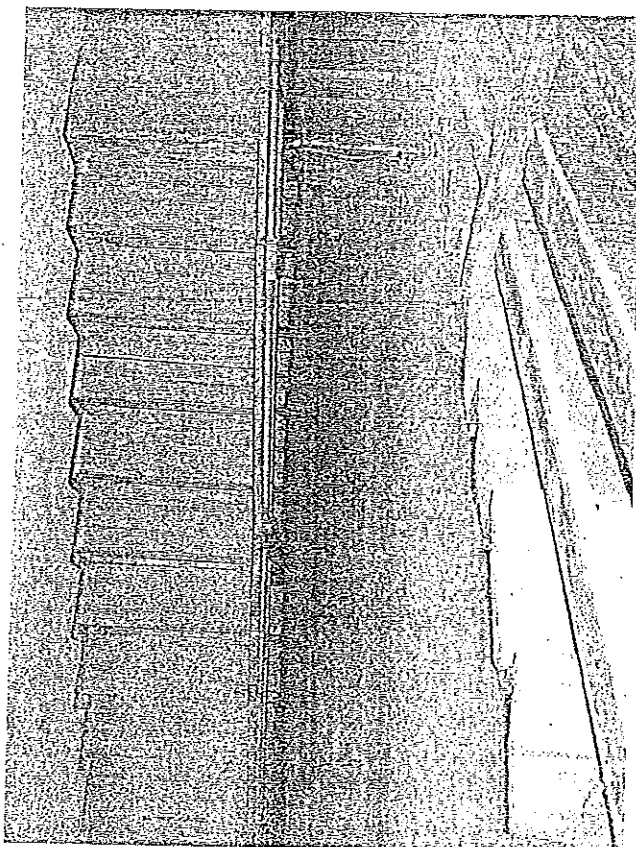


foto 17

Visione di alcune zone dei vani di sottotetto



foto 18

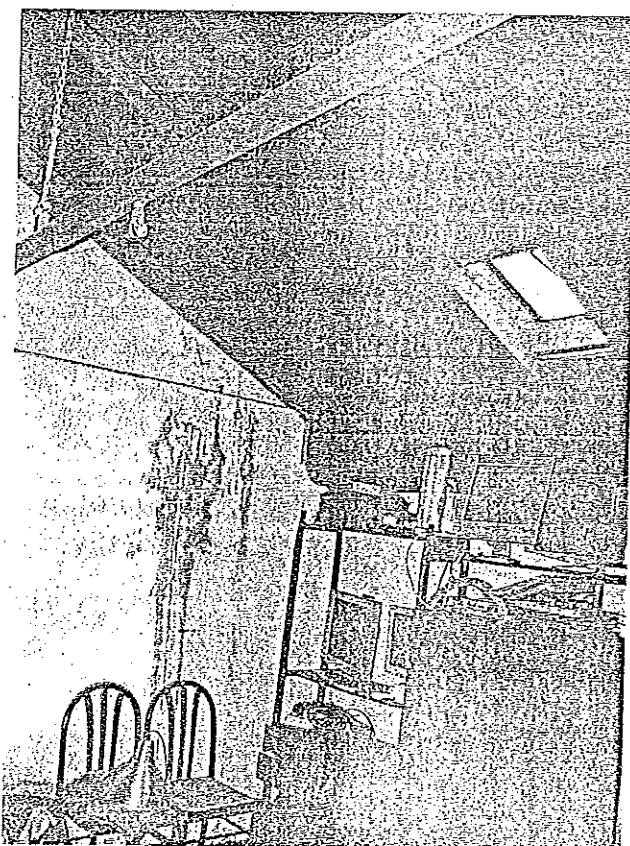


foto 19

Valentino Monaco