



1 - lato sud



2 - lato ovest 1



3 - lato ovest 2



4 - lato ovest p1e p2



5 - lato ovest pt



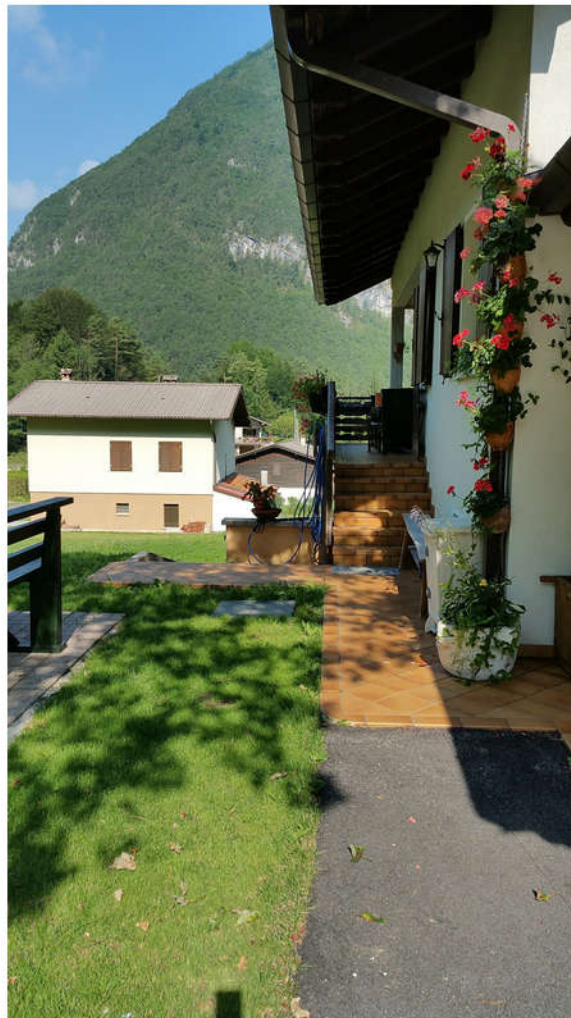
6 - lato nord



7 - lato est



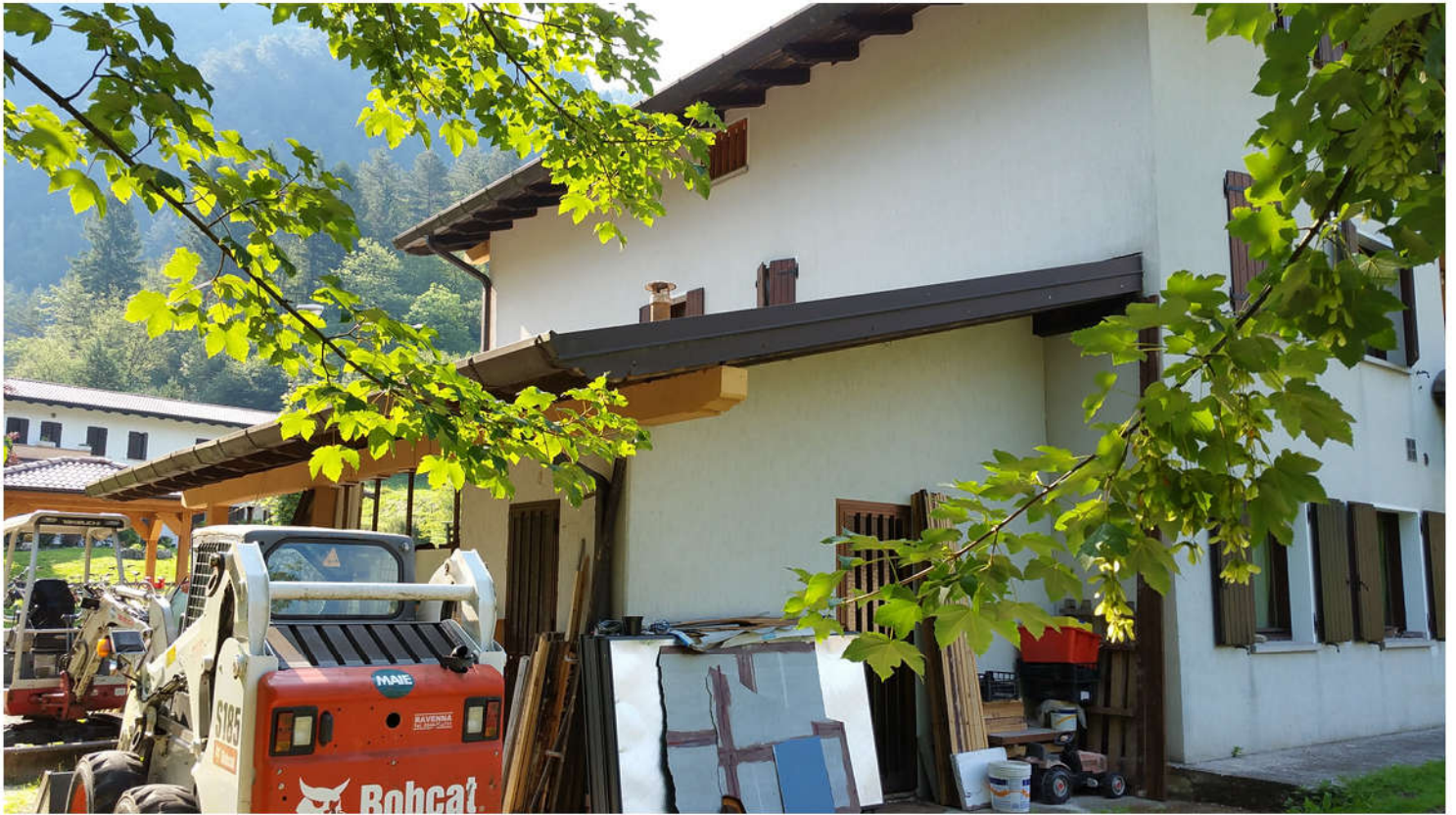
8 - lato est ingresso



9 - ingresso pt



10 - tettoia nord



11 - centrale termica



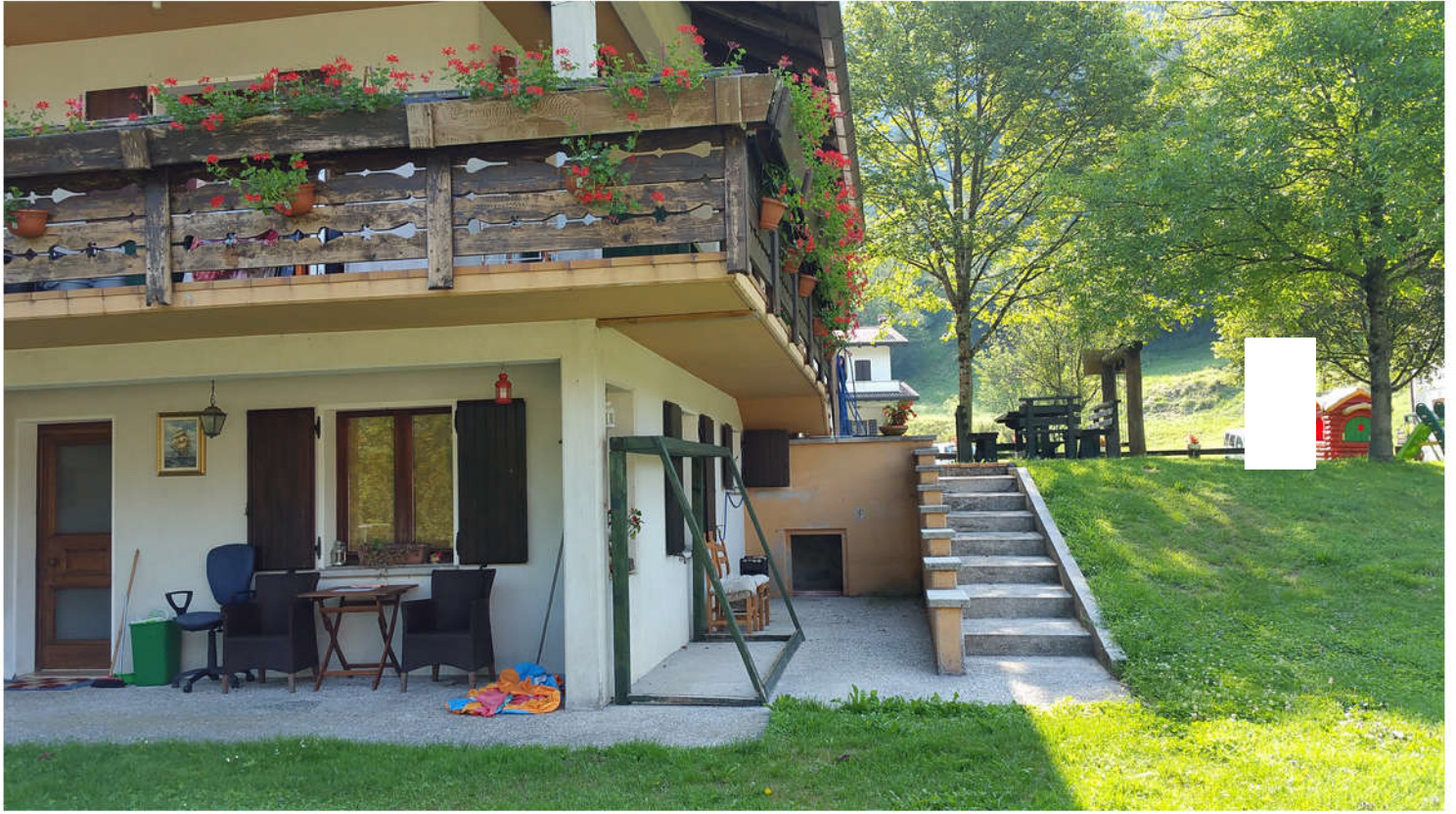
12 - tettoia nord



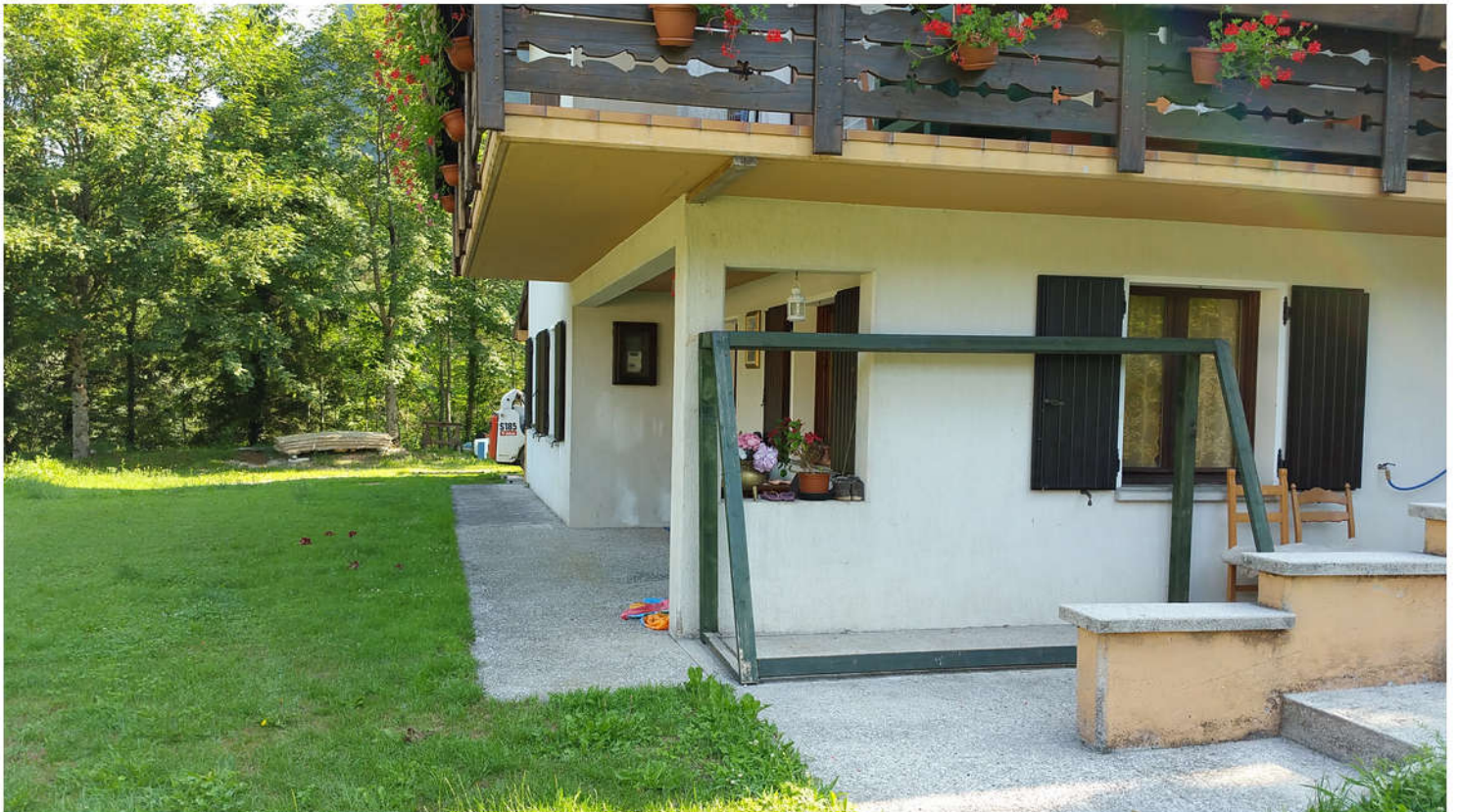
13 - ingresso autorimessa



14 - esterno est



15 - lato ovest sud pt



16 - lato sud pt terrazzo



17 - particolare ct



18 - gazebo esterno



19 - pertinenza fronte



20 - manufatti esterni



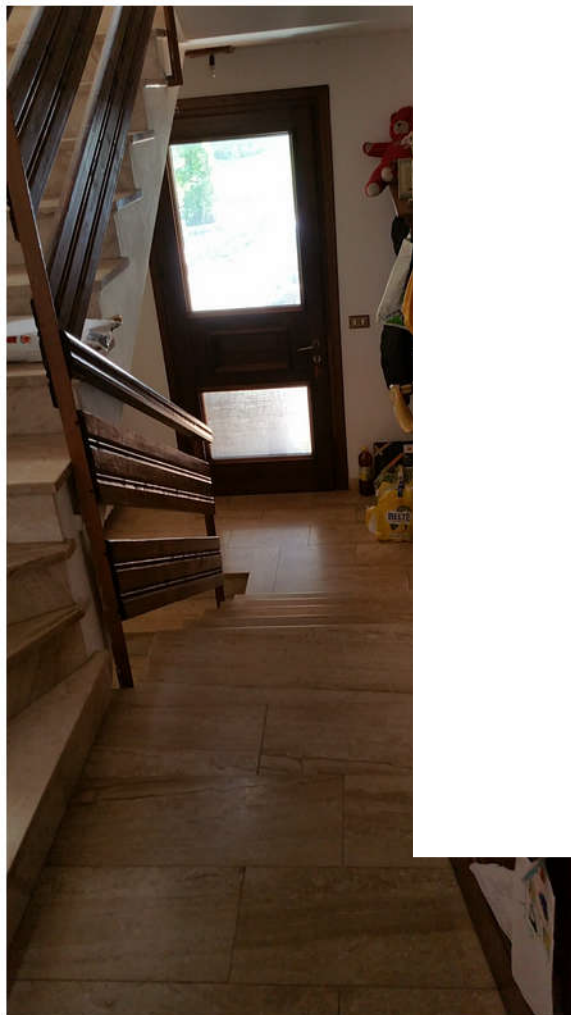
21 - terreno fronte



22 - vano scala comune



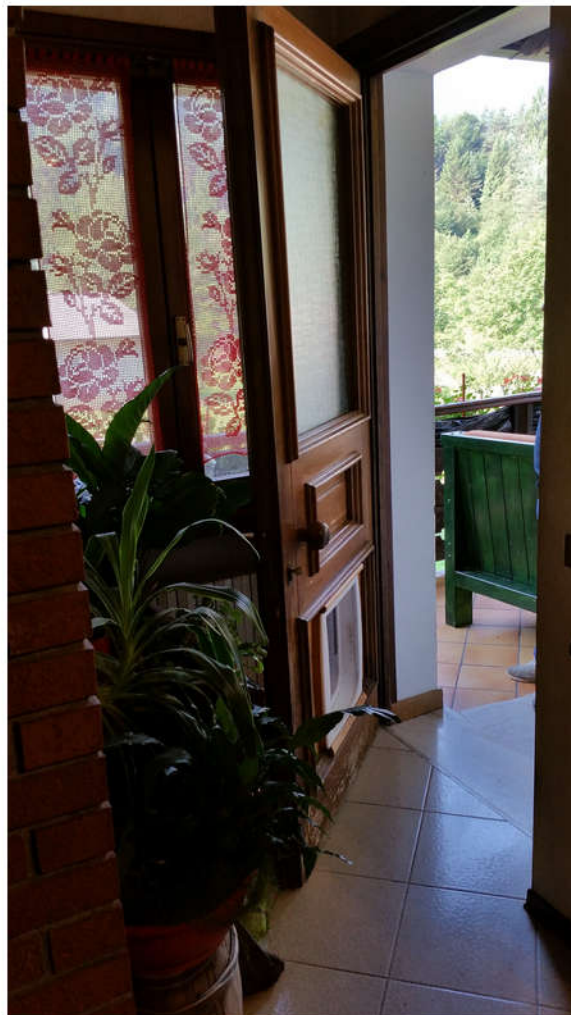
23 - vano scala comune



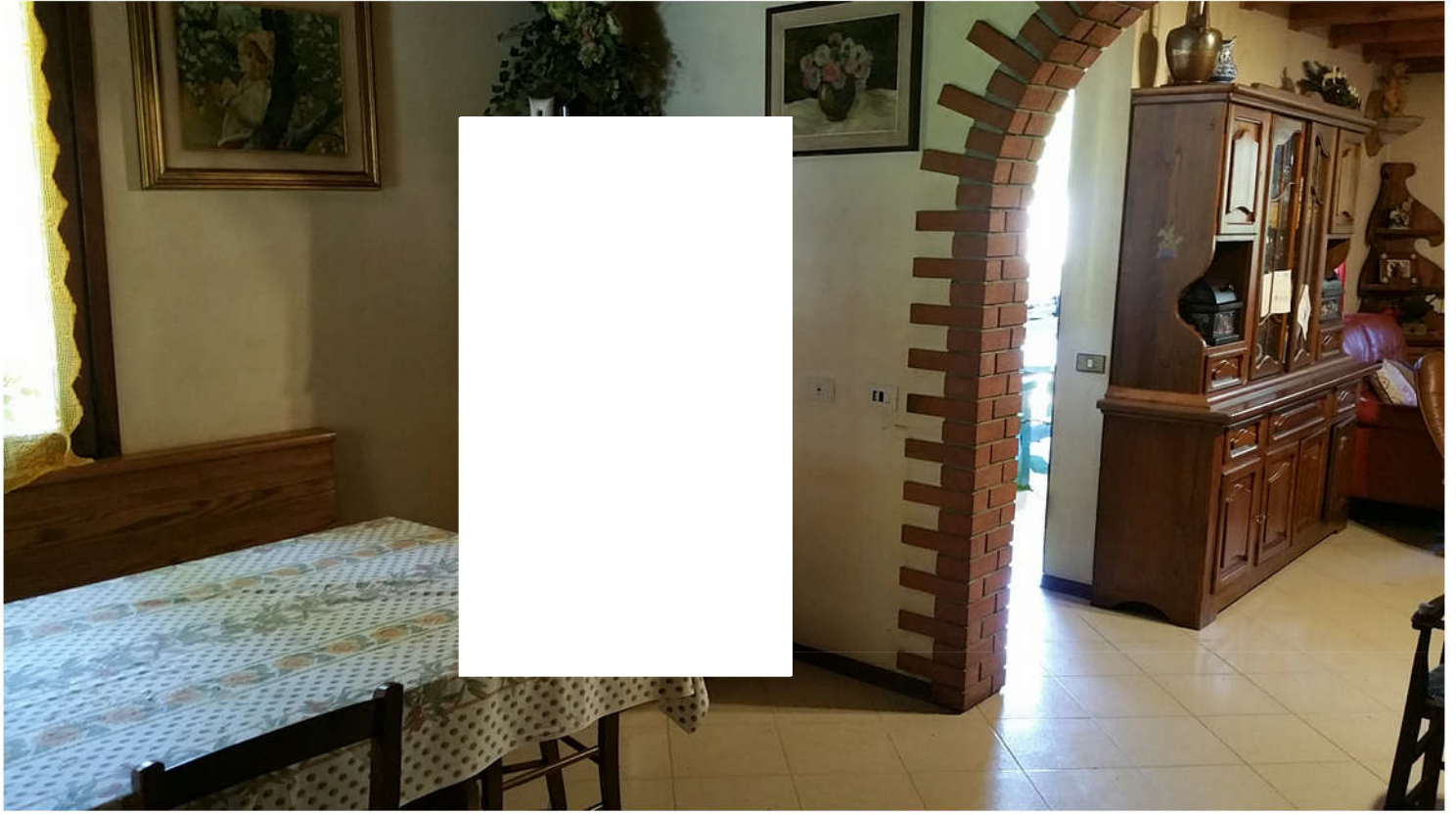
24- vano scala comune ed ingresso comune



25 - vano scala comune p1



26 - ingresso p1



27- cucina ingresso p1



28 - soggiorno p1



29 - soggiorno p1



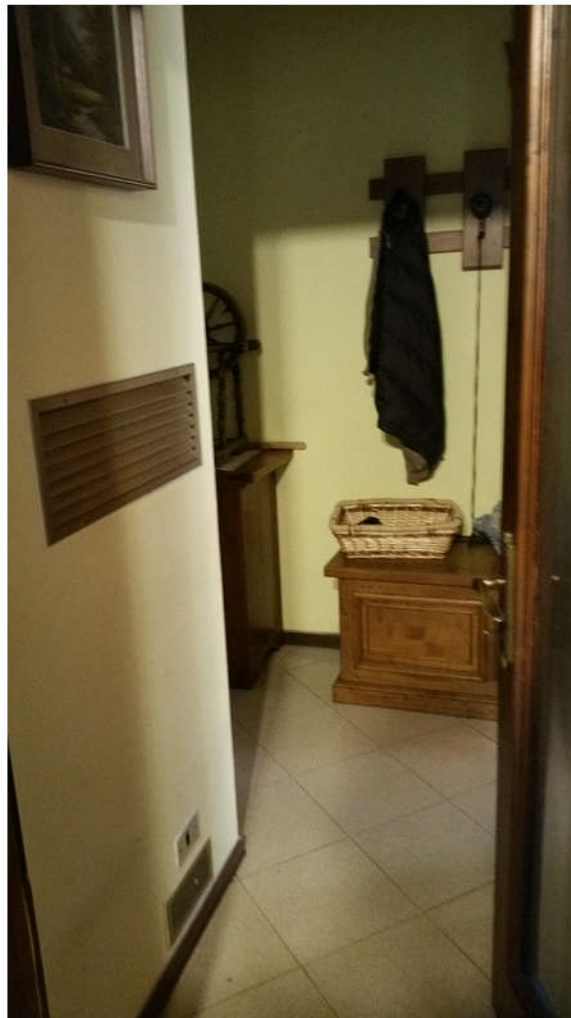
30 - cucina p1



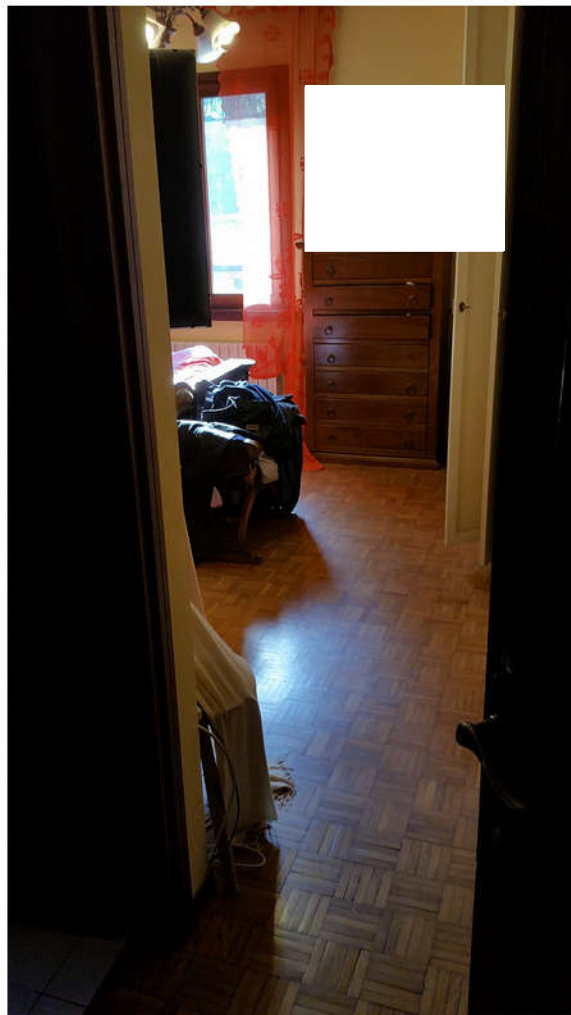
31 - cucina p1



32 - particolare caminetto soggiorno



33 - corridoio p1



34 - corridoio - camera matrimoniale p1



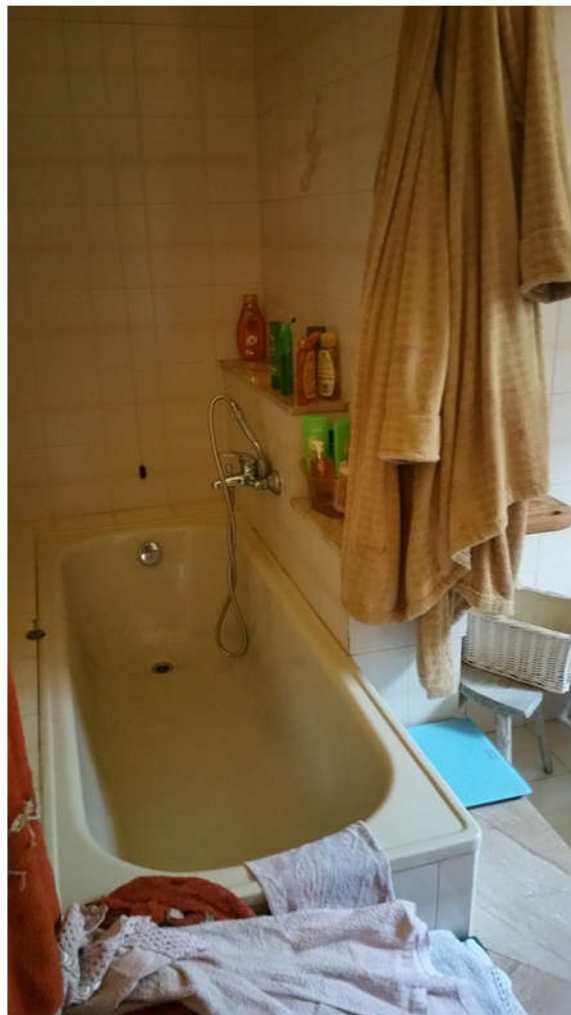
35 - camera matrimoniale p1



36 - camera matrimoniale p1



37 - bagno p1



38 - bagno p1



39 - bagno p1



40 - corridio p1



41 - particolare caminetto bifacciale su corridoio



42 - bagno2 p1



43 - bagno 2 p1



44 - camera singola p1



45 - camera singola p1



46 - corridoio p1



47 - camera singola2 p1



48 - soggiorno pt



49 - soggiorno pt



50 - camera pt



51 - camera pt



52 - bagno pt



53 - disimpegno autormessa studio pt



54 - studio pt



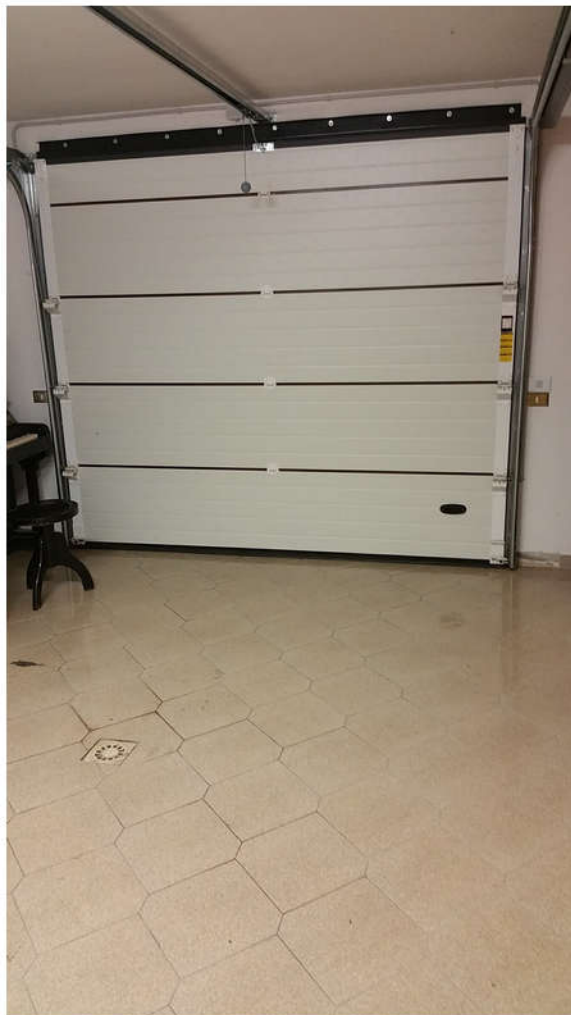
55 - studio pt



56 - studio pt



57 - autorimessa pt



58 - autorimessa pt



59 - autorimessa pt



60 - cantina sottoscala



61 - centrale termica riscaldamento



62 - centrale termica acs



63 - cucina p2



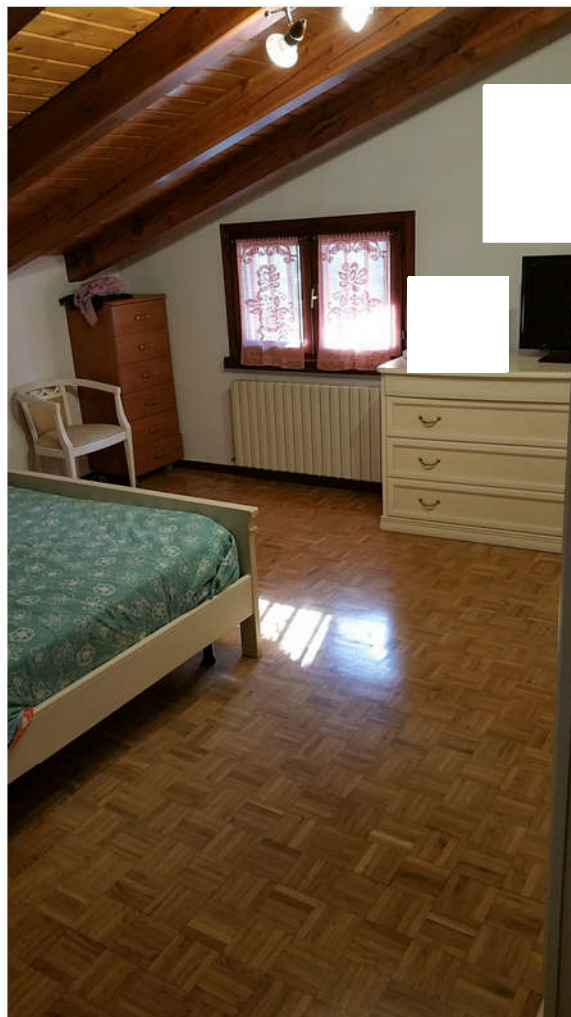
64- soggiorno p2



65 - corridoio p2



66 - corridoio p2



67 - camera matrimoniale p2



68 - bagno p2



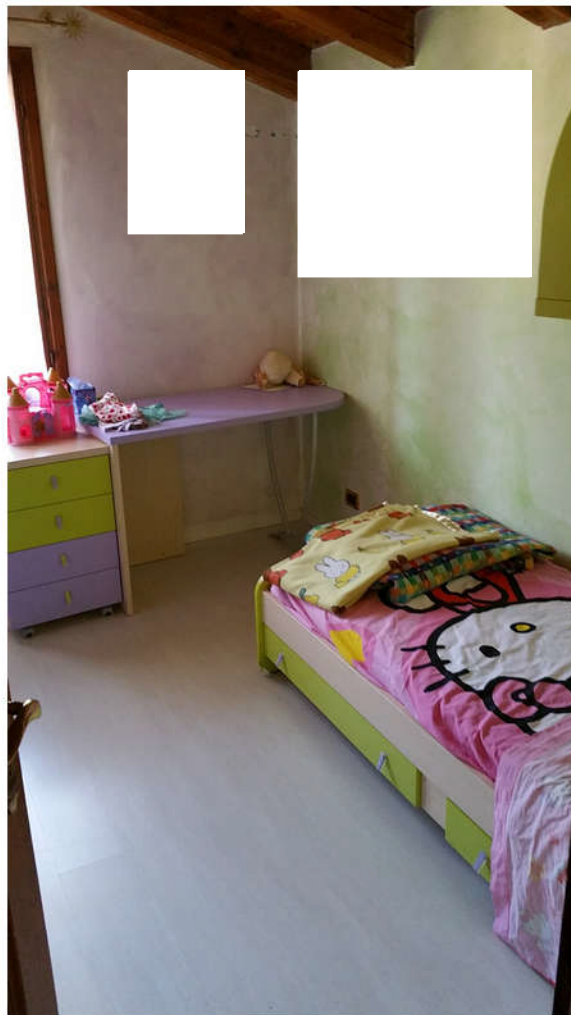
69 - bagno p2



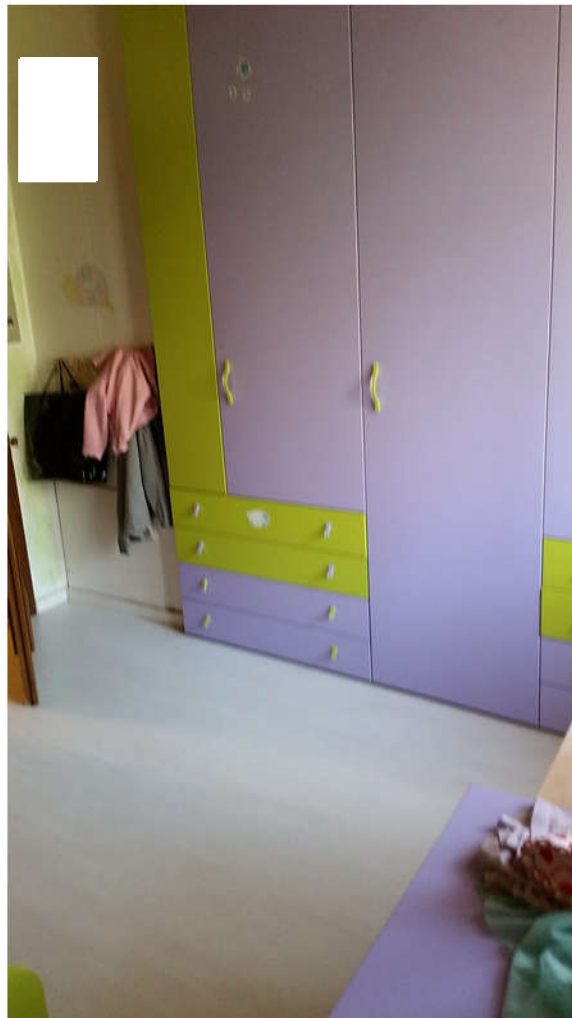
70 - camera singola1 p2



71 - camera singola 1 p2



72 - camera singola 2 p2



73 - camera singola 2 p2



1 - fronte fabbricato



2 - fronte fabbricato



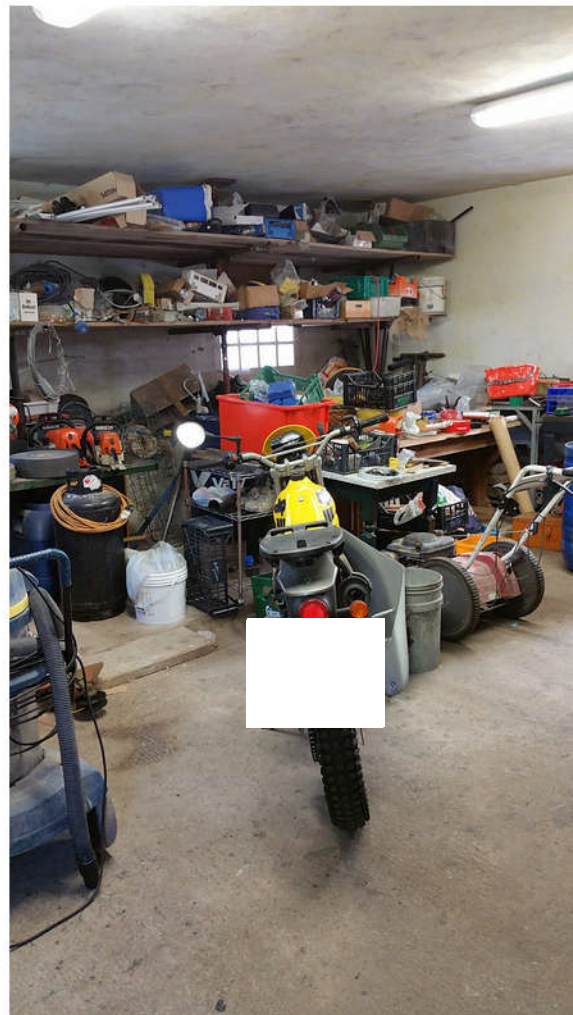
3 - fronte portoni



4 - retro fabbricato



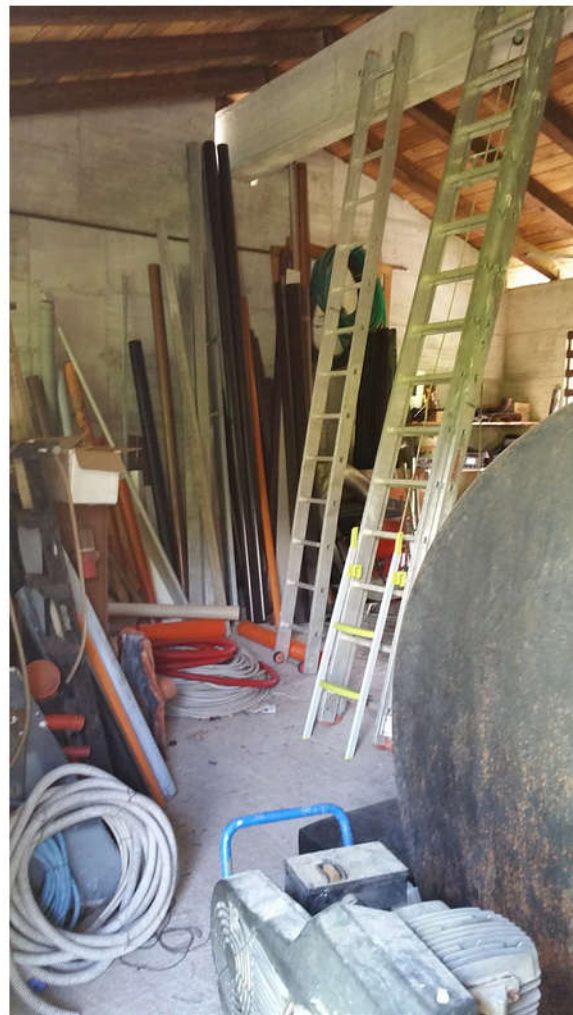
5 - lato nord e pertinenza



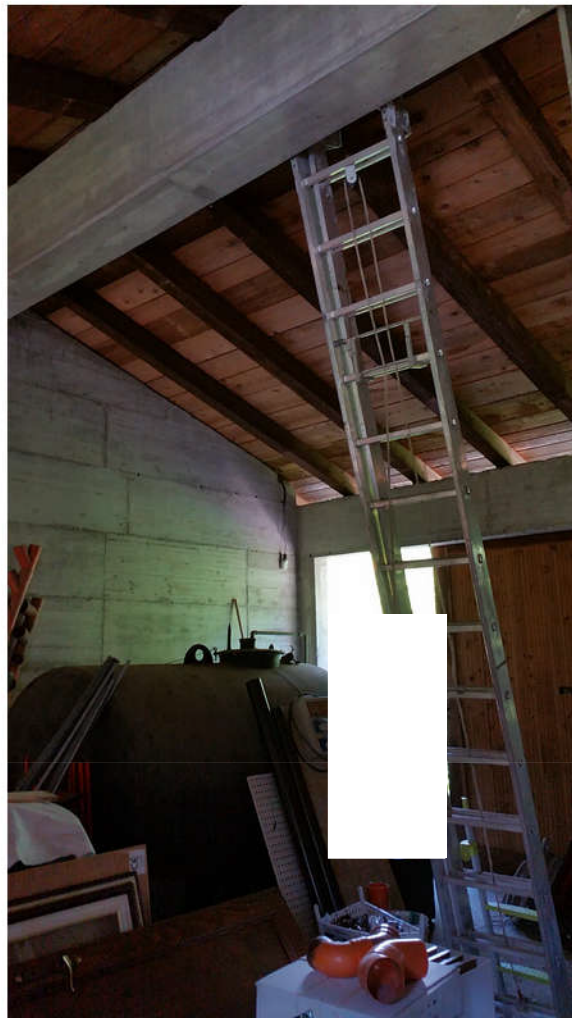
6 - interno piano terra



7 - interno piano terra



8 - interno piano primo



9 - interno piano primo