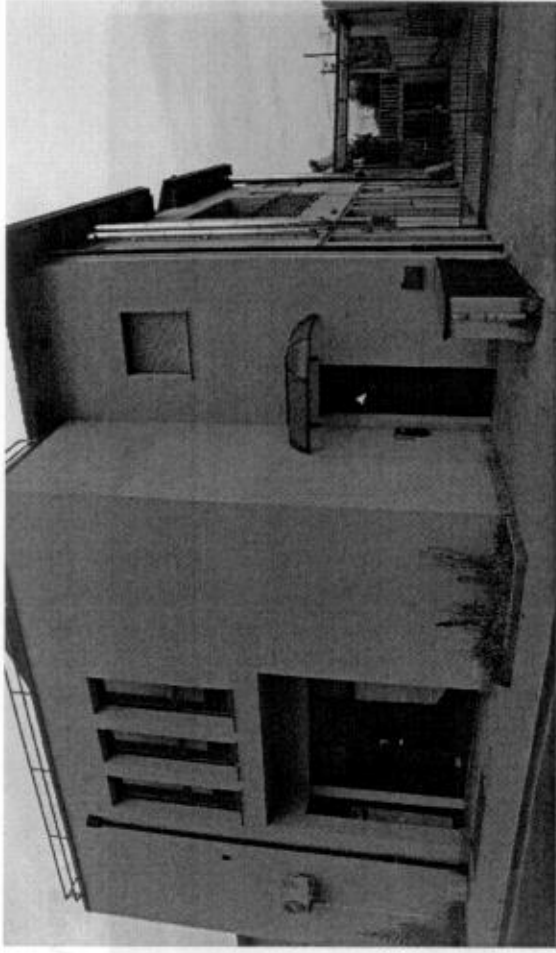


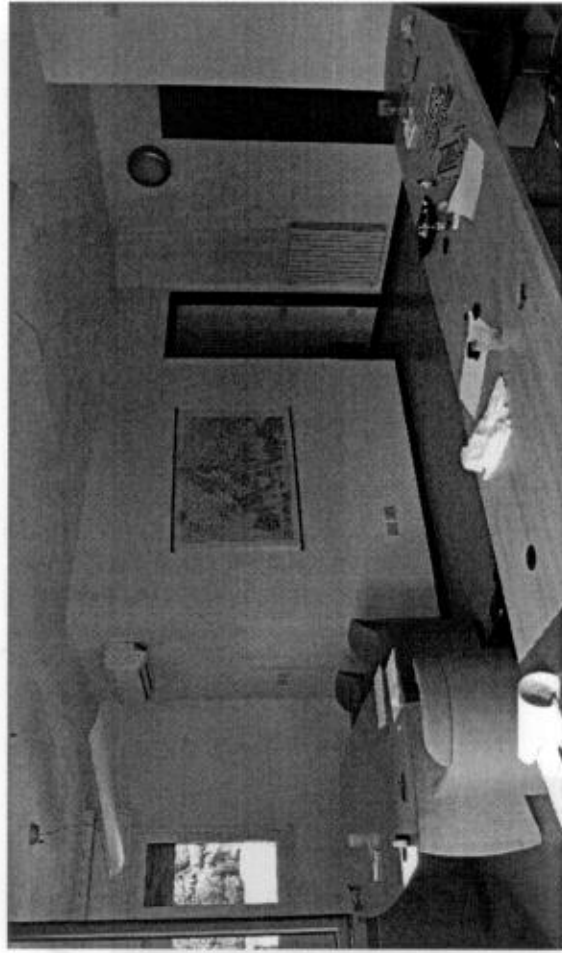
5005



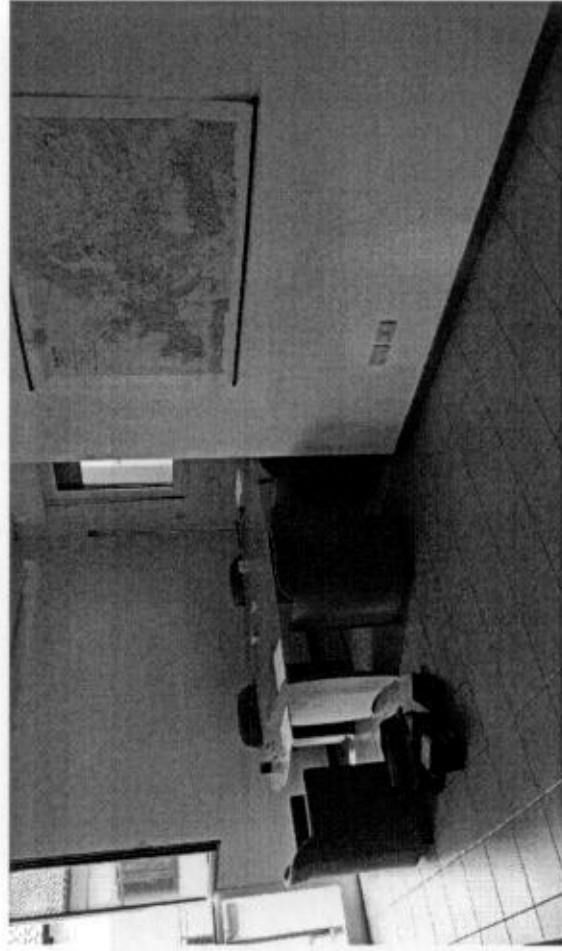
Vista 1 - PROSPETTO



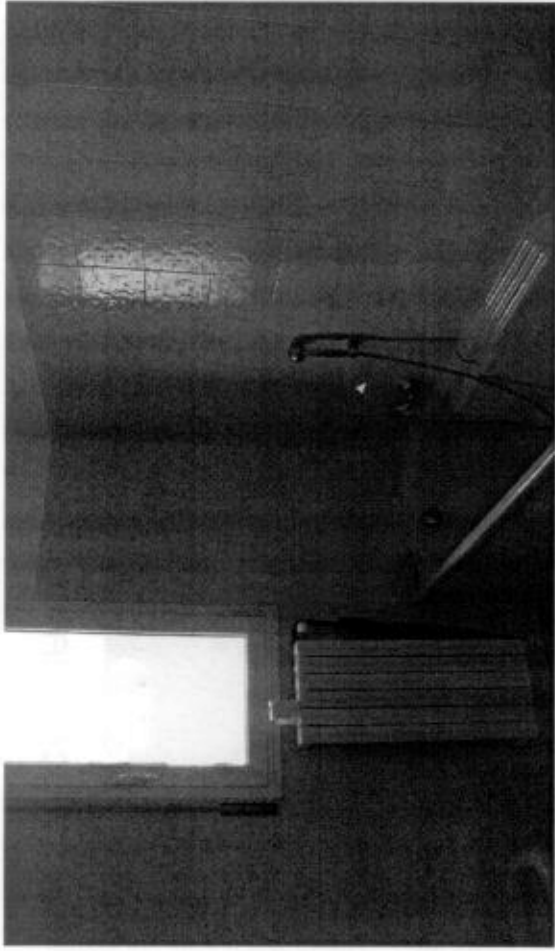
Vista 2 - UFFICIO LATO SU VIA MONTELLO



Vista 3 - LOCALE UFFICIO



Vista 4 - interno UFFICIO



Vista 5 - part. SERVIZIO



Vista 6 - ACCESSO BALCONE / TERRAZZO



Vista 7 - part. BALCONE / TERRAZZO



Vista 7 - part. SERRAMENTO