

all. 10

**Fotografie esterne ed interne del bene,
nonché la relativa planimetria**

Foto aerea - ubicazione dell'immobile



Foto esterne



Foto da via dei Transiti



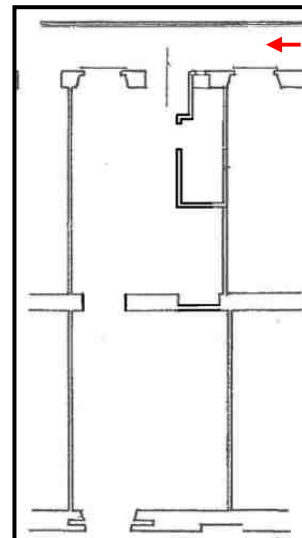
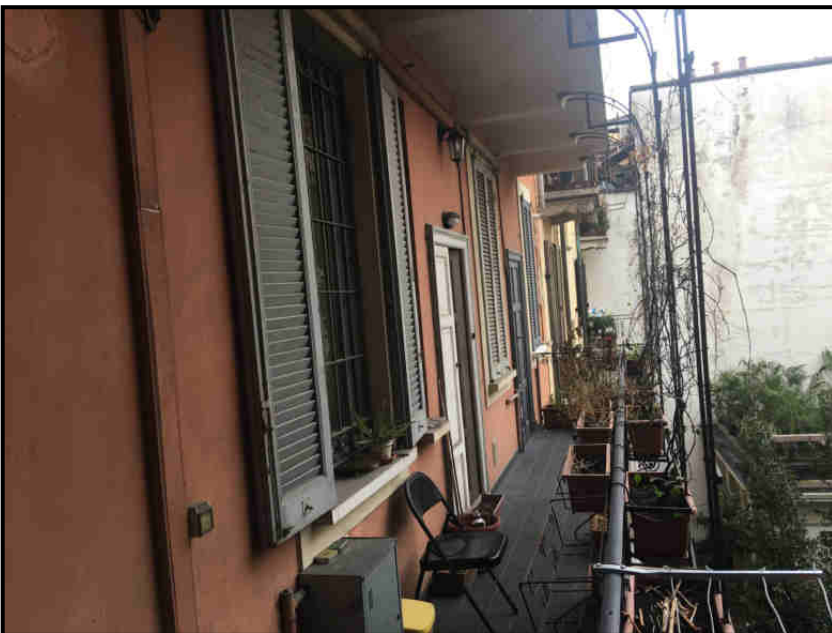
Foto da via dei Transiti



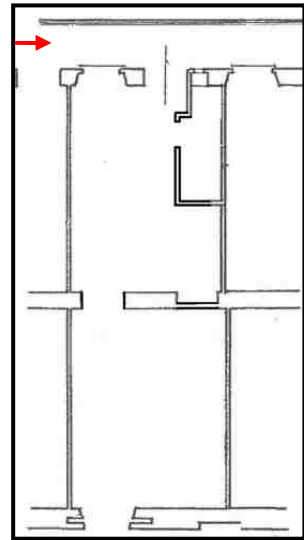
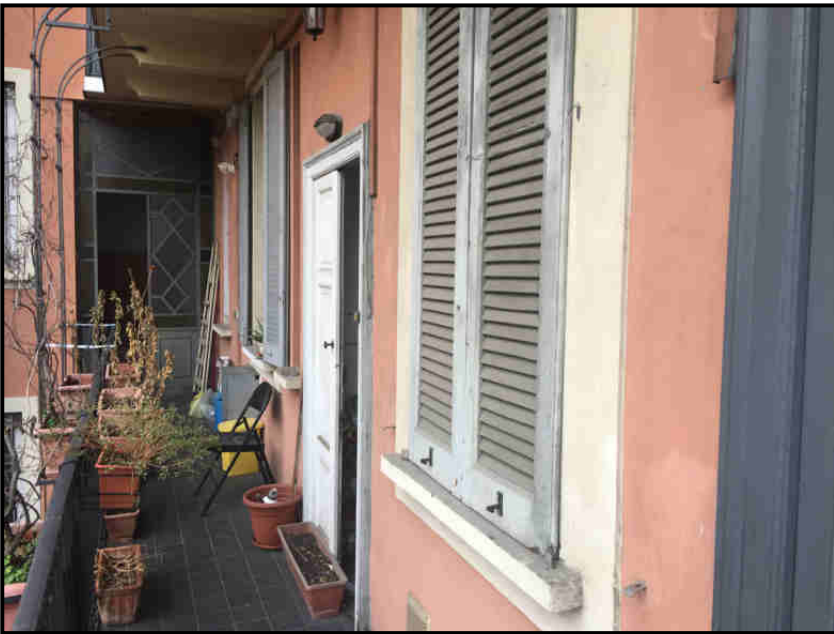
Facciata immobile
oggetto di perizia

Foto da cortile interno

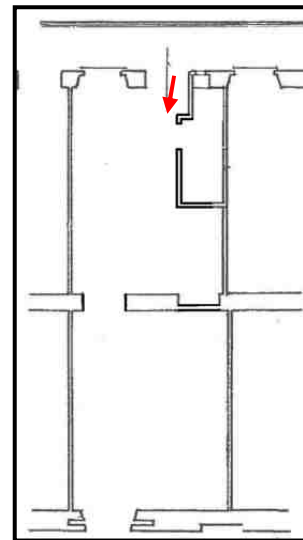
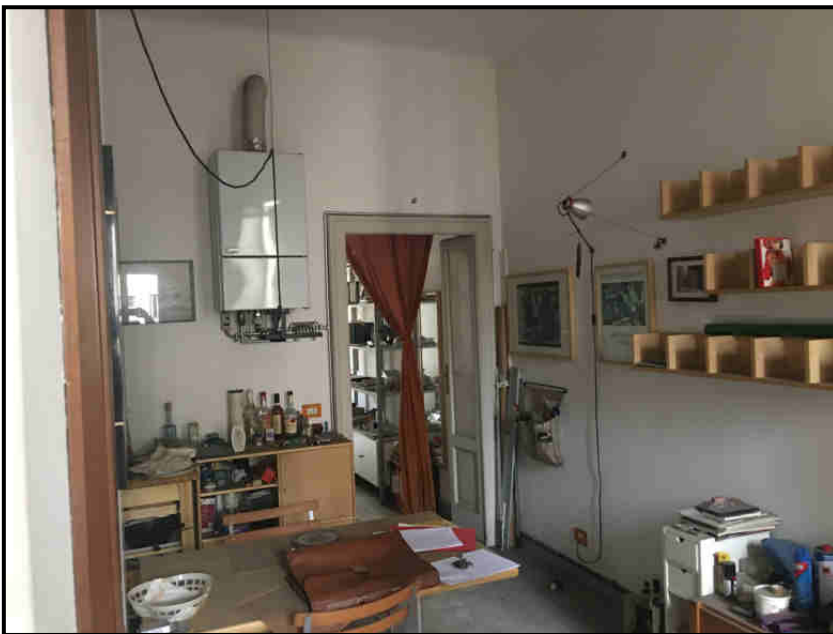
Foto interne



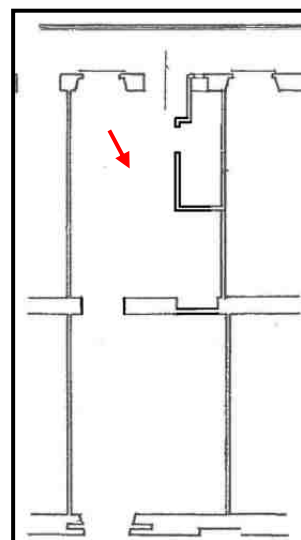
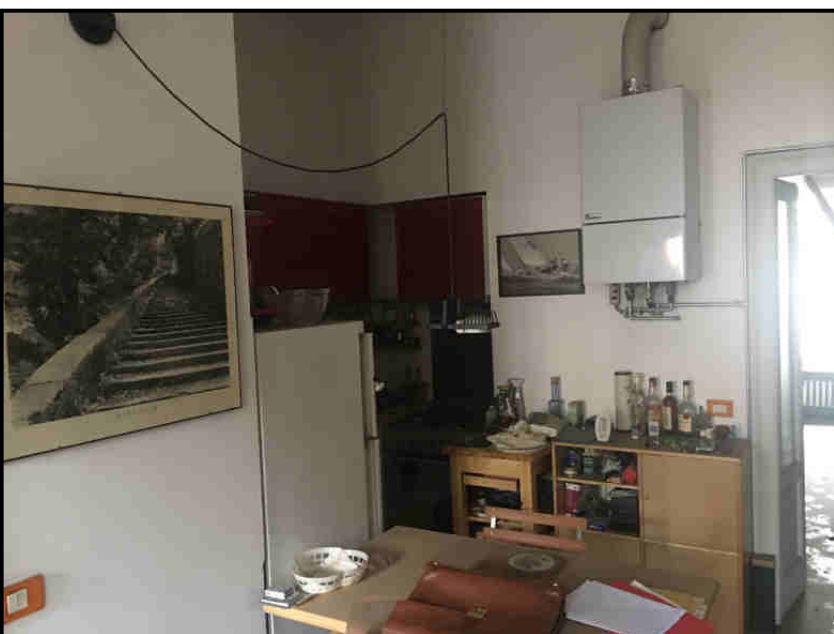
Ballatoio d'ingresso



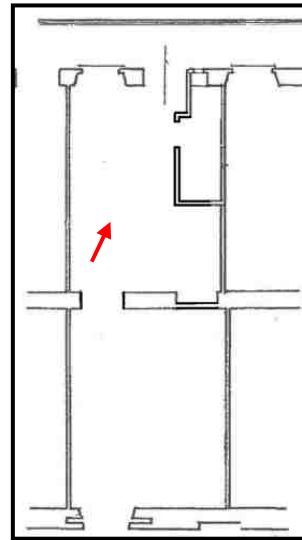
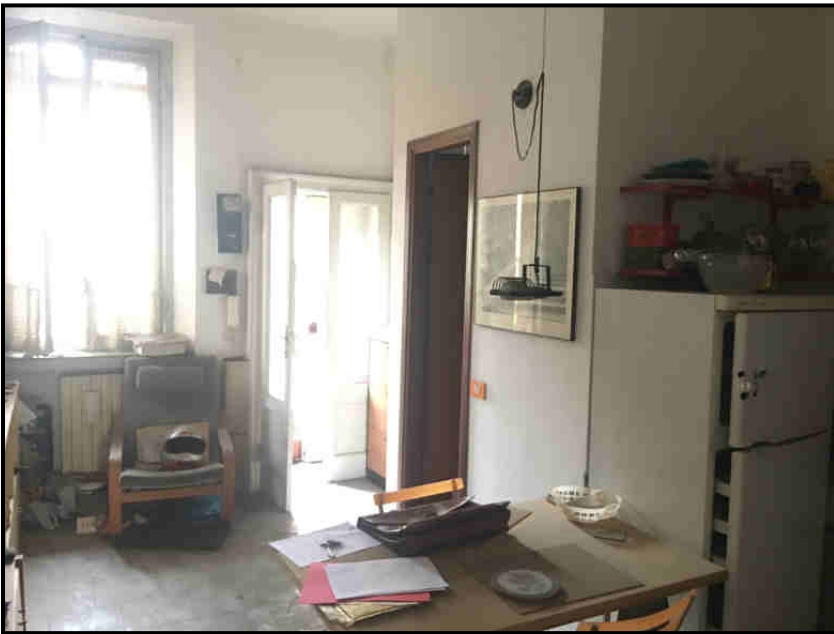
Ballatoio d'ingresso



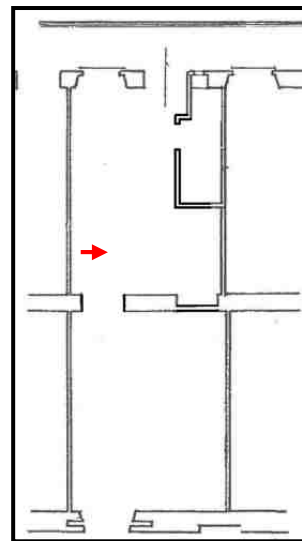
Soggiorno



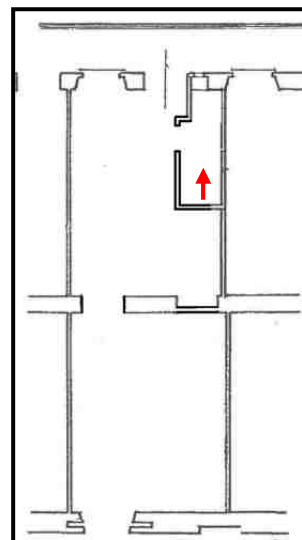
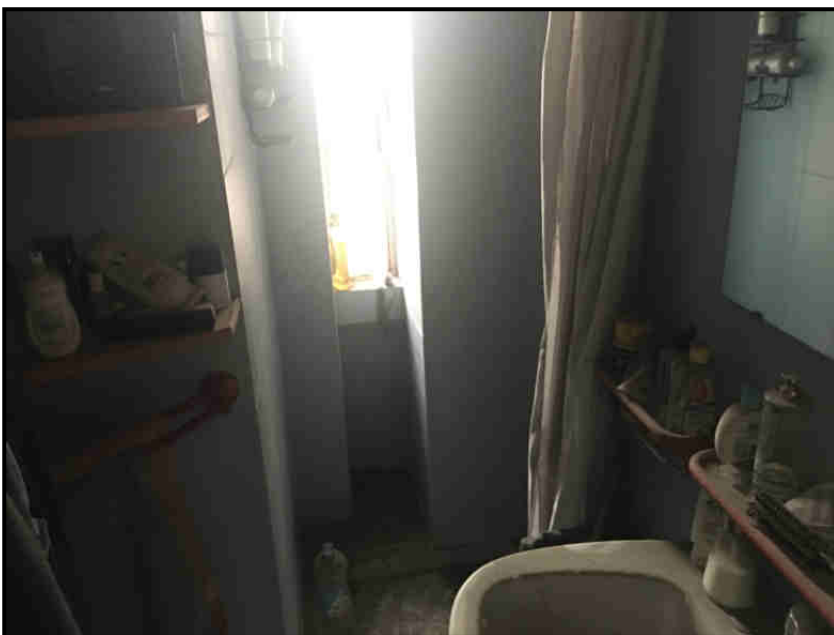
Angolo cottura



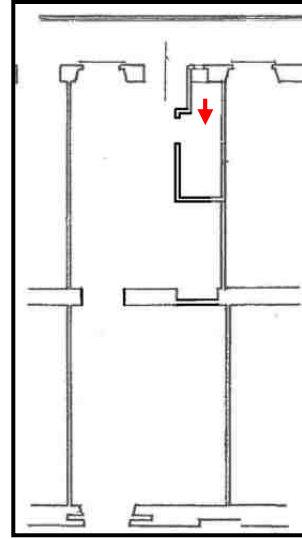
Soggiorno



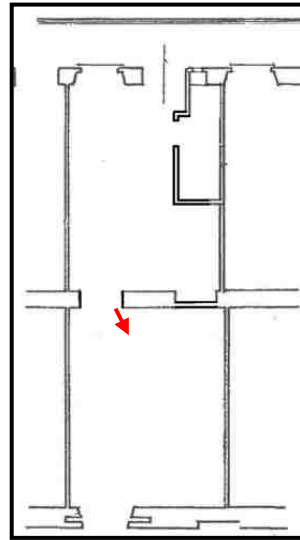
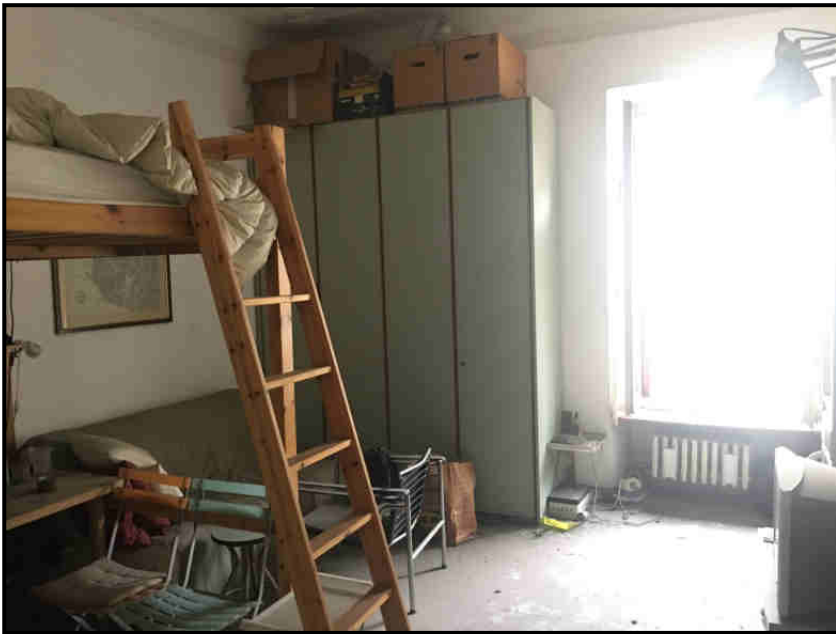
Angolo cottura



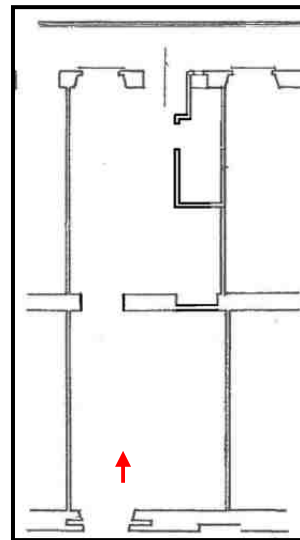
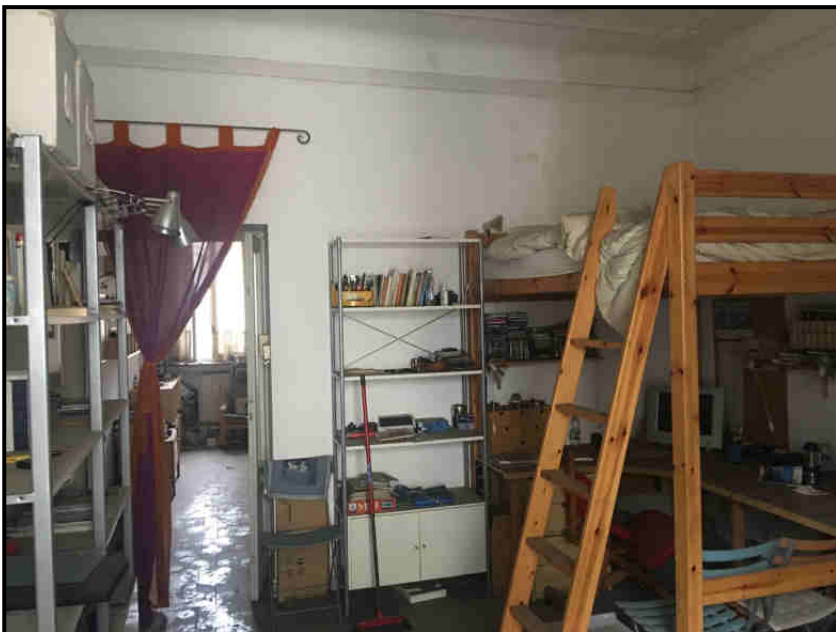
Bagno



Bagno



Camera

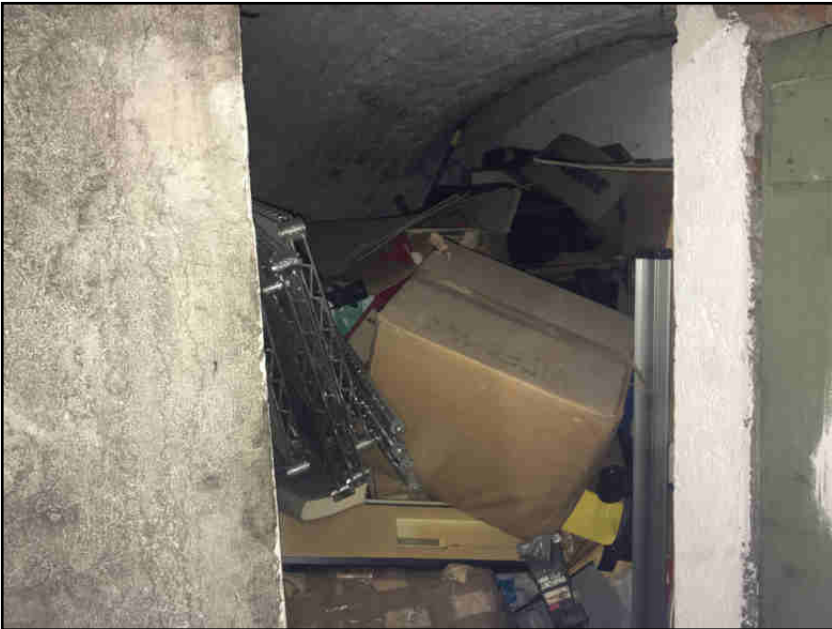


Camera

Cantina



Corridoio comune



Cantina



Cantina