

*Allegato c)*

## DOCUMENTAZIONE FOTOGRAFICA

*Via ZARA, 2**LIMBIATE (MB)*

Vista del palazzo condominiale da Zara e particolare dell'ingresso.





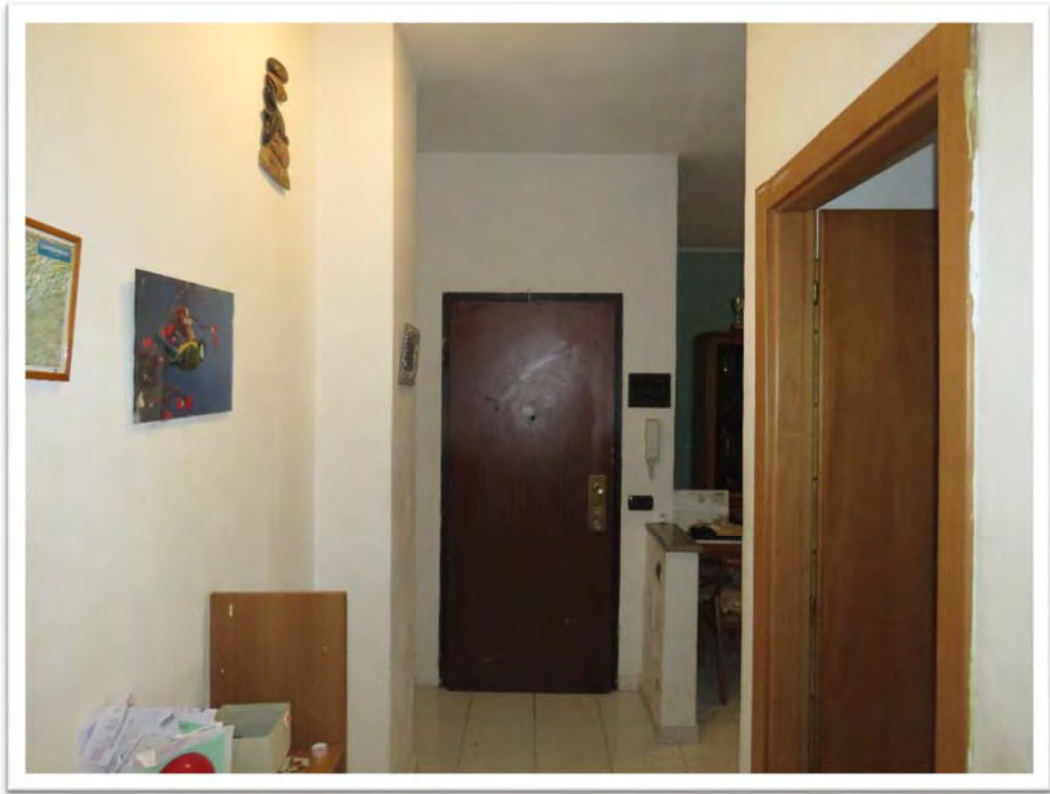
L'intorno.



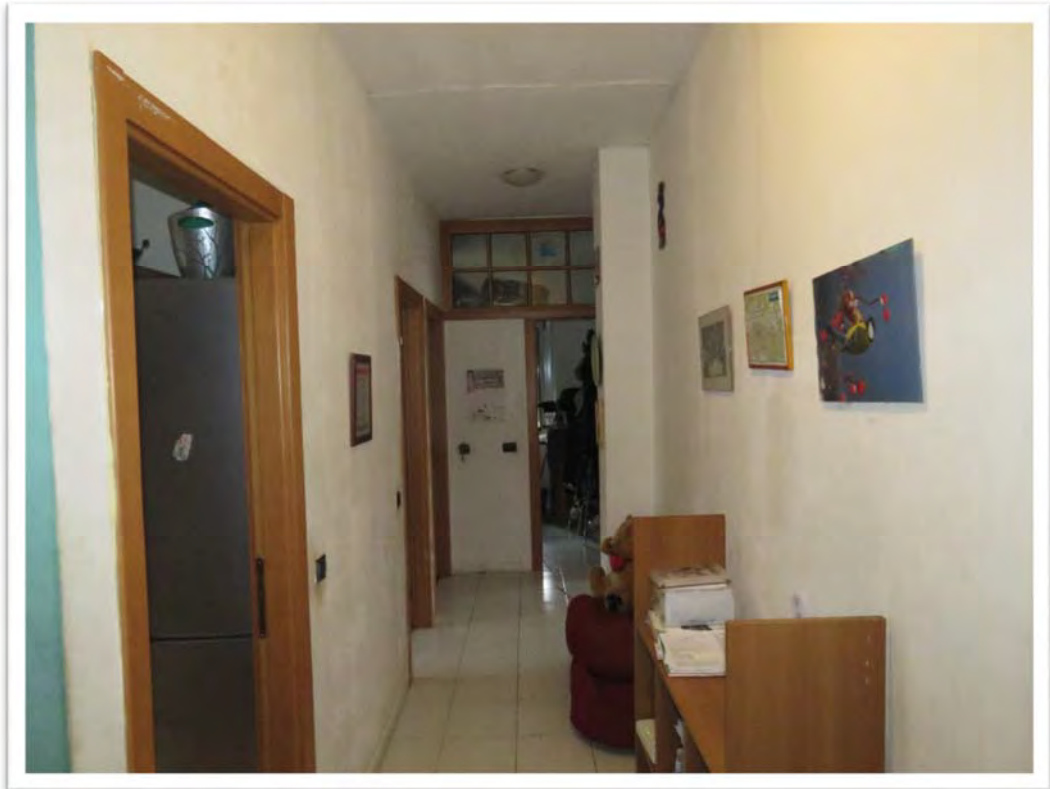


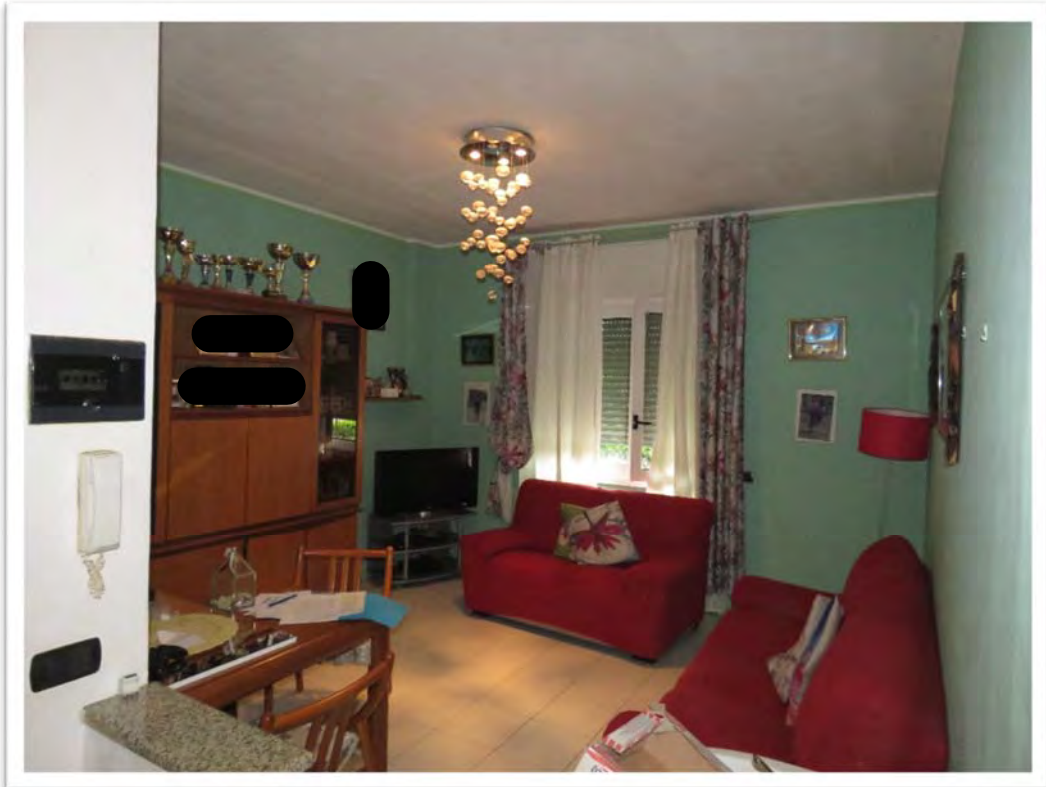
L'ingresso e portoncino d'ingresso all'alloggio.



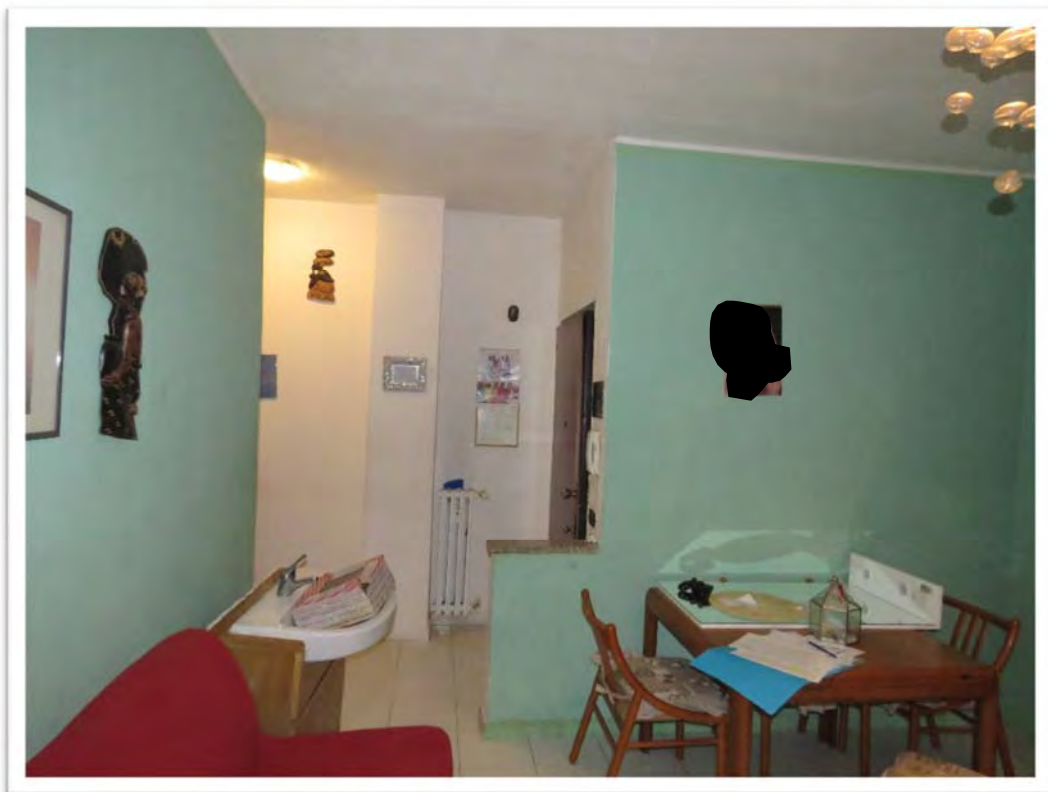


Disimpegno.





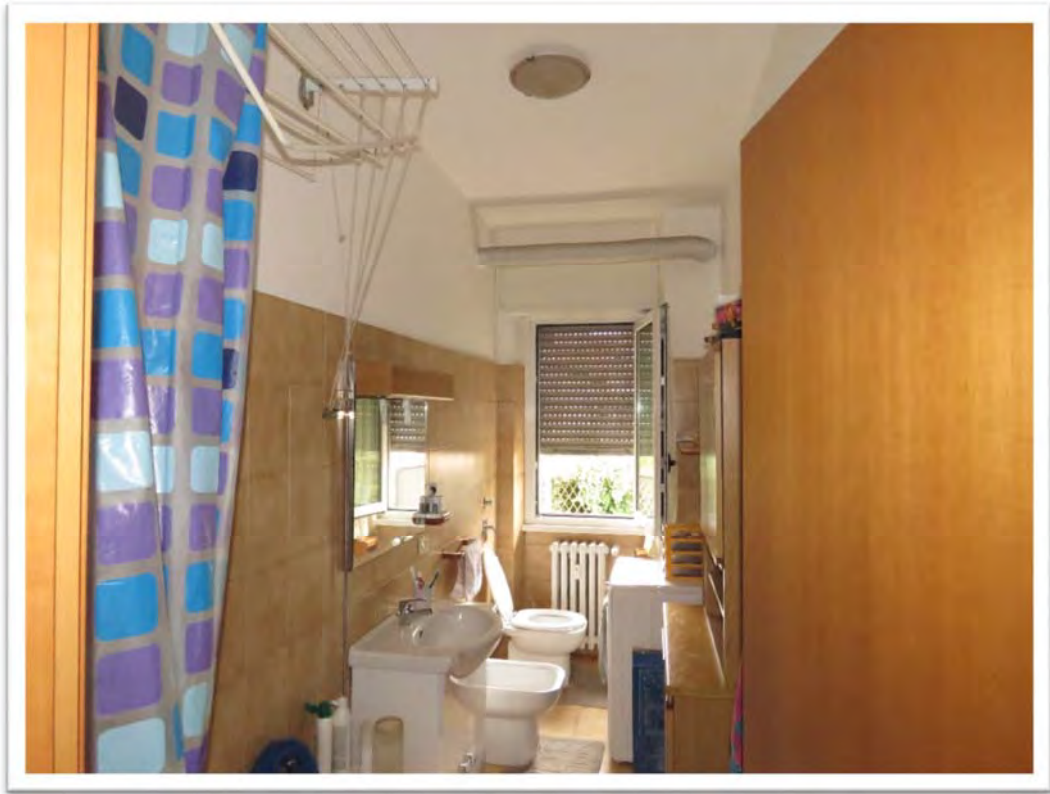
Soggiorno.



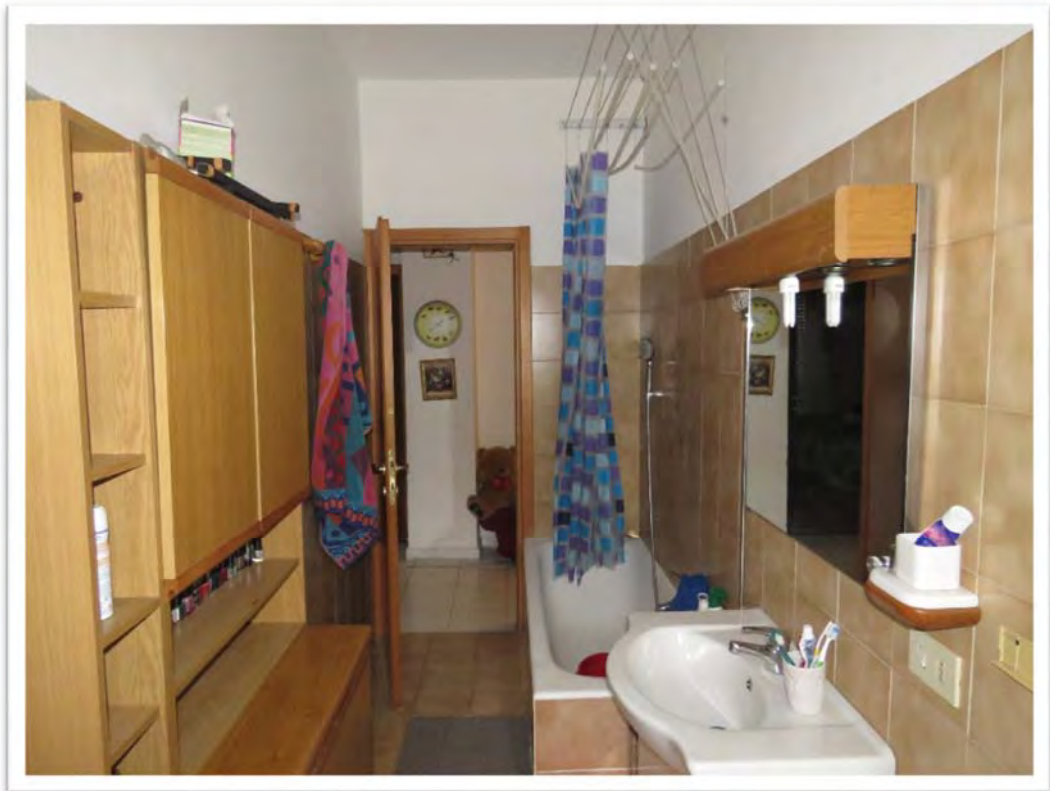


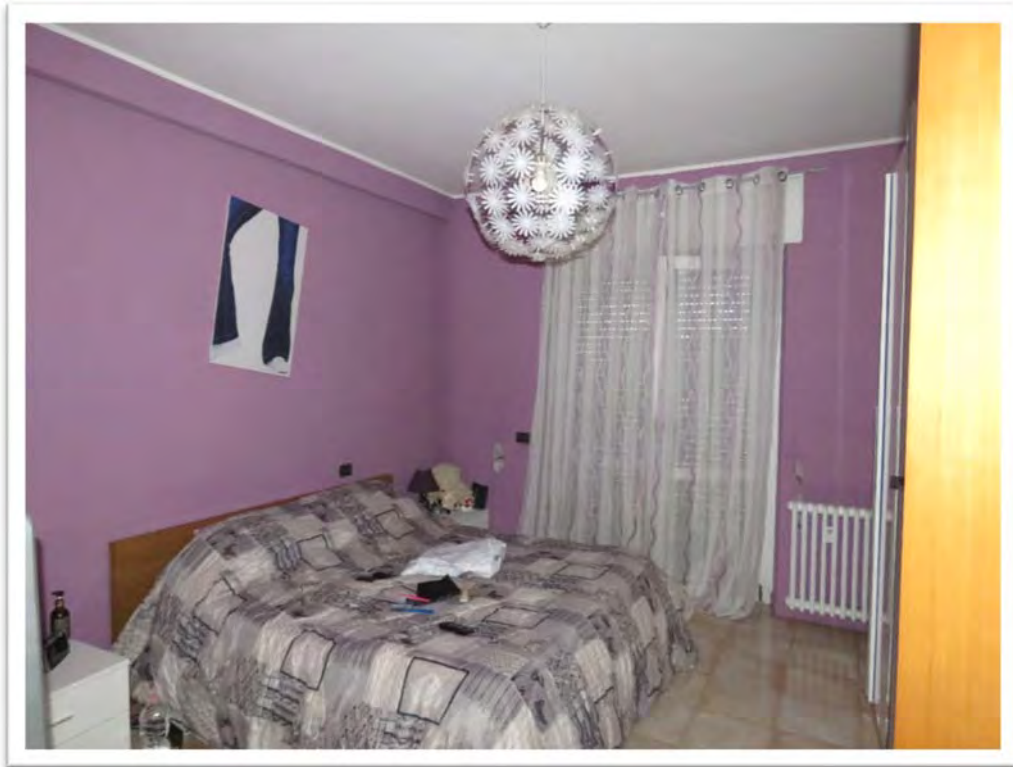
Cucina.



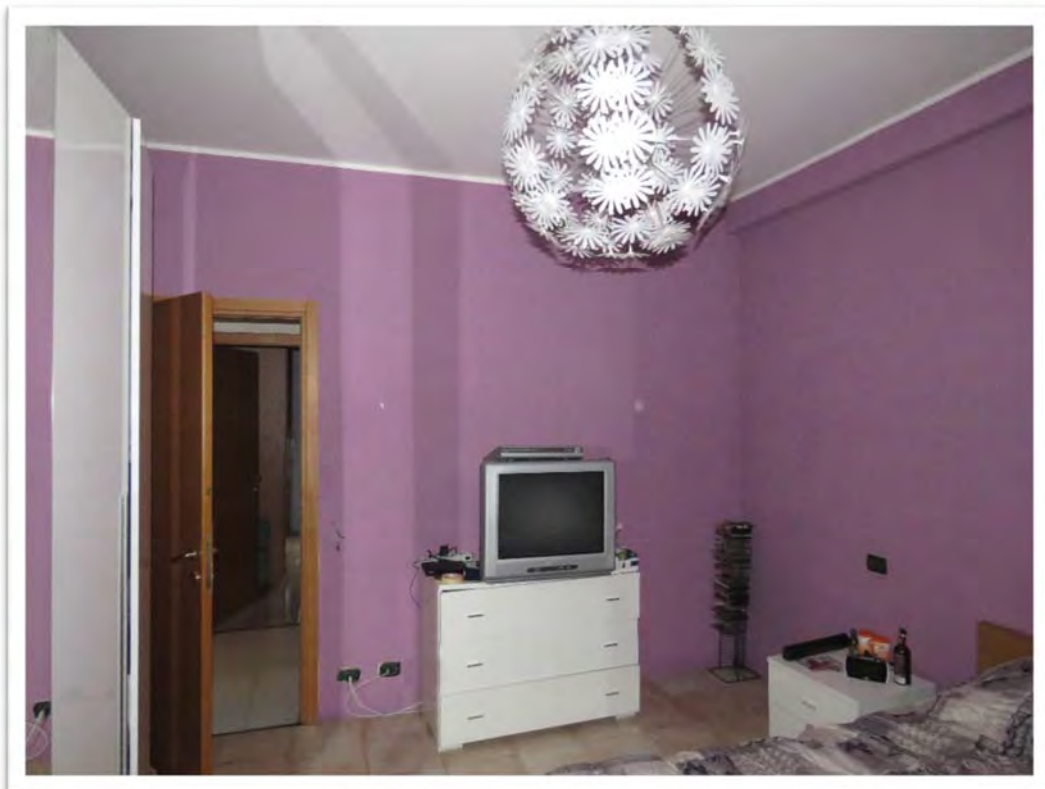


Bagno.





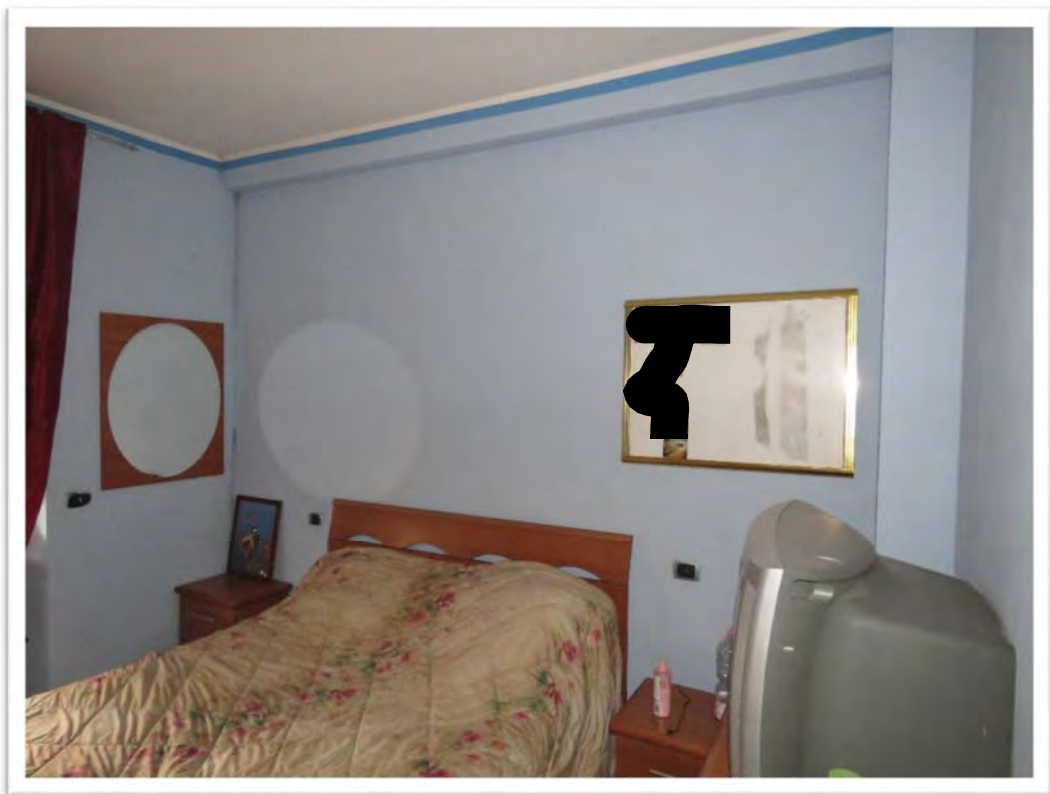
Camera.





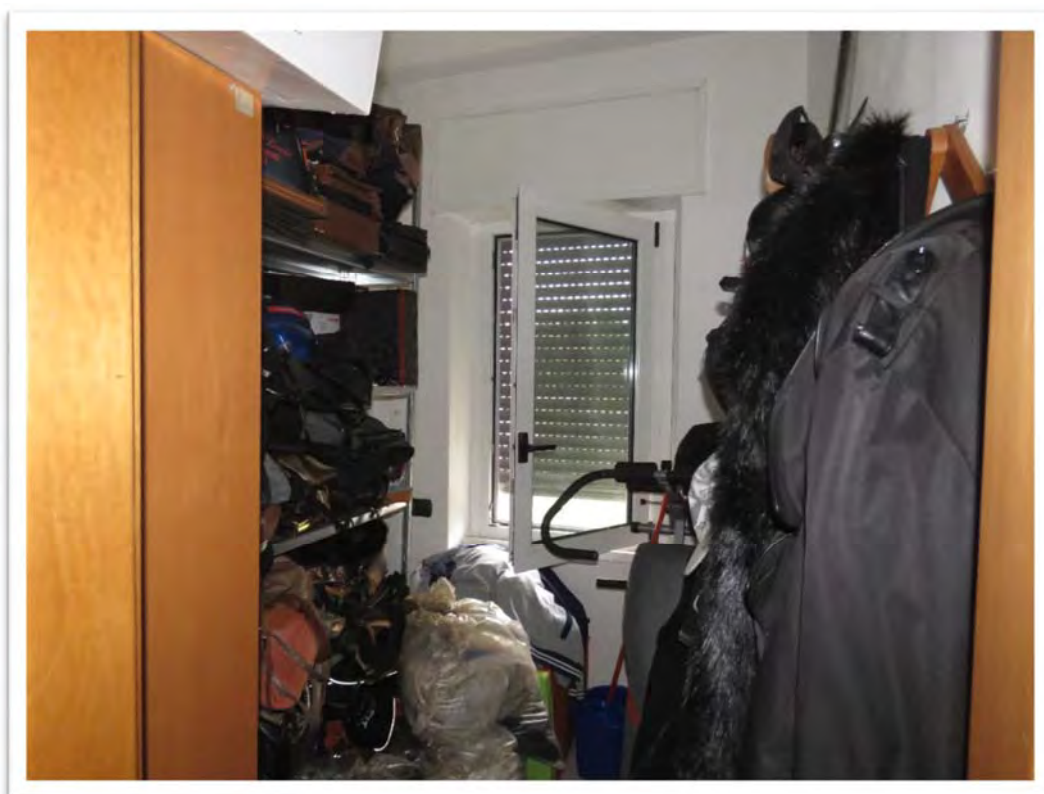


Camera.





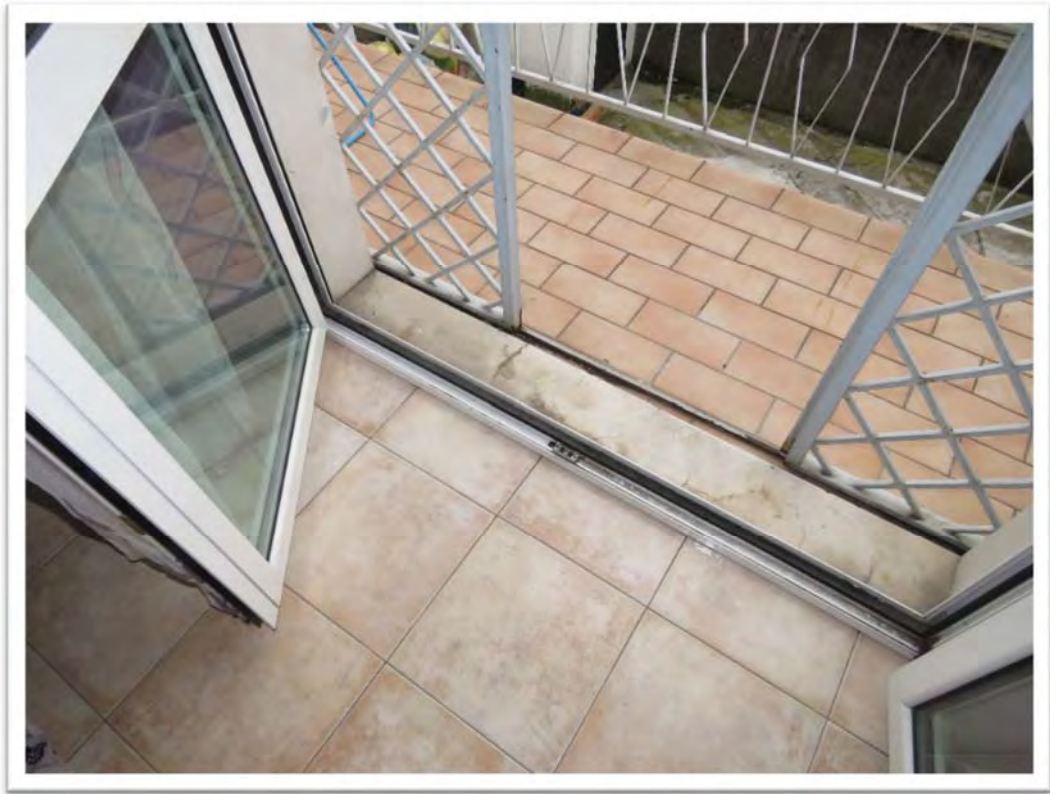
Ripostiglio.





Particolare della caldaia murale a gas e dei cavi elettrici con sezione a vista e scoperta ad altezza di circa ml. 1,00.





Il balcone.





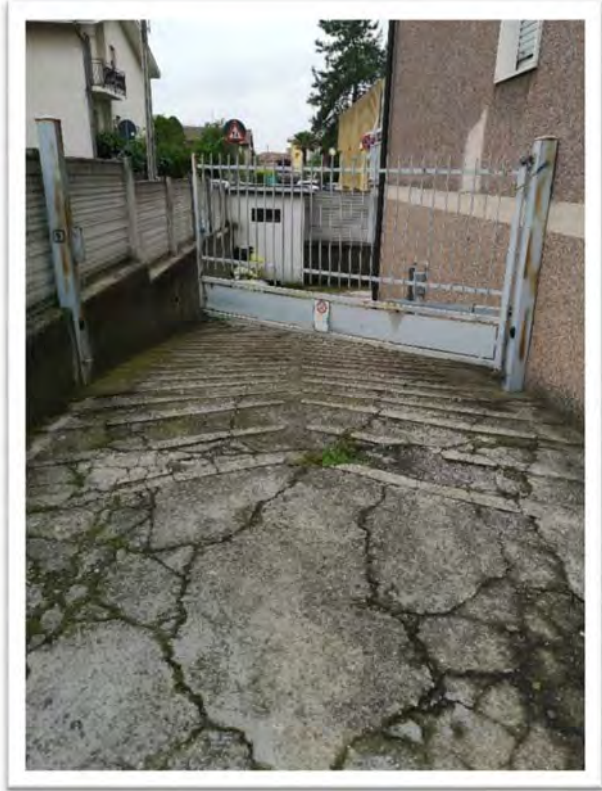
La cantina.





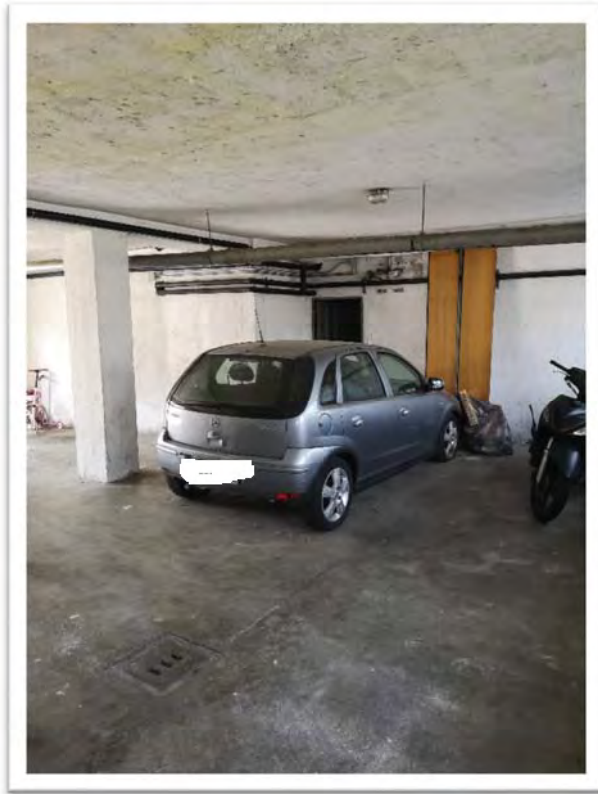
L'ingresso carraio ed il retro dello stabile.





Zone di manovra delle auto.





Il posto auto.

