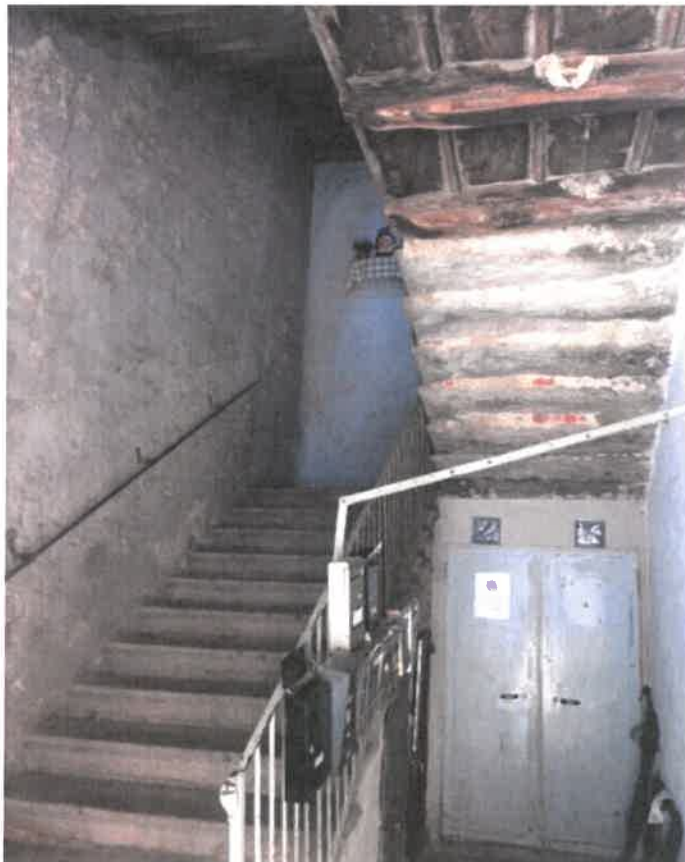


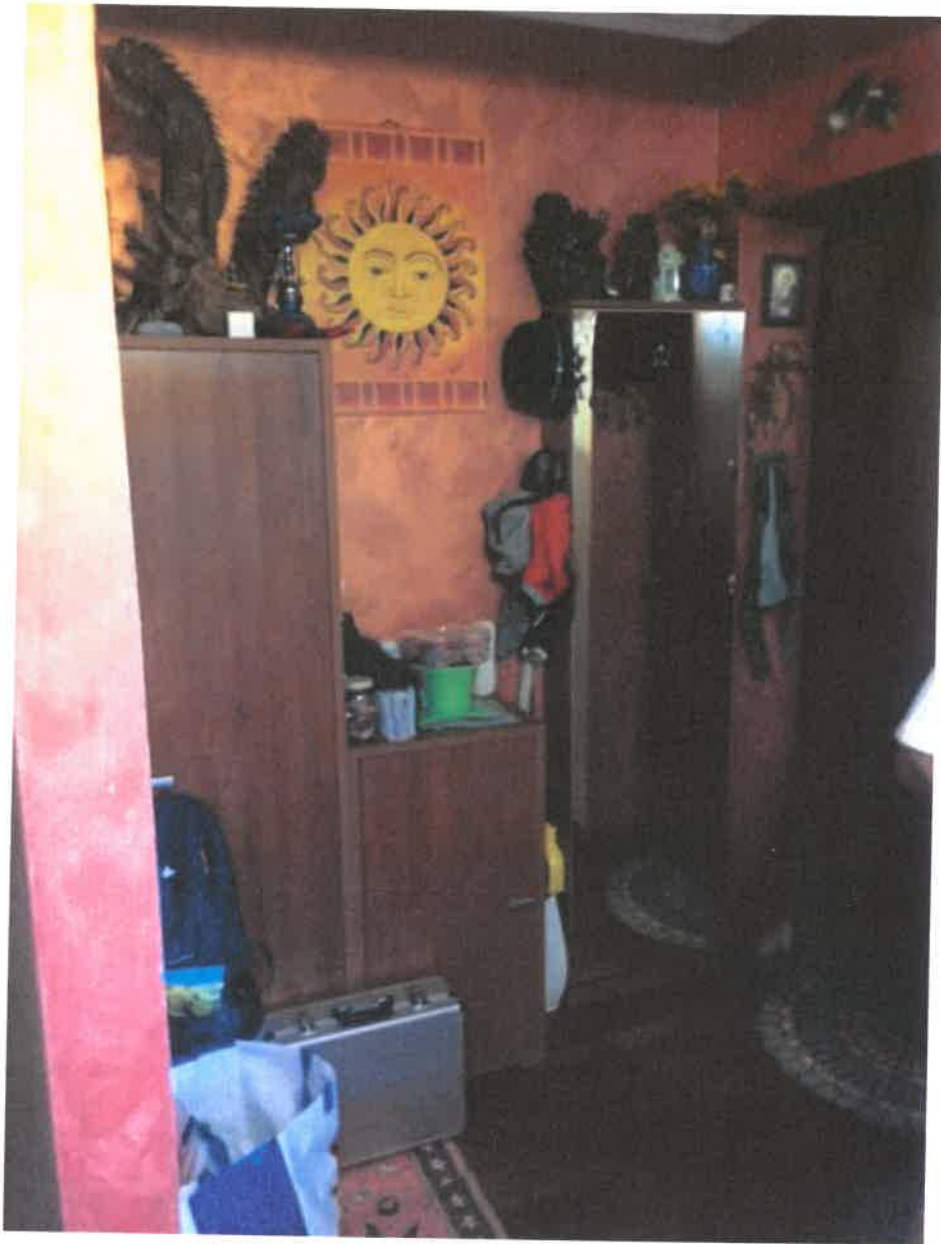
**VISTE DELL'IMMOBILE DALL'INTERNO DEL CORTILE DEL CIVICO 1
DI PIAZZA CHIESA**



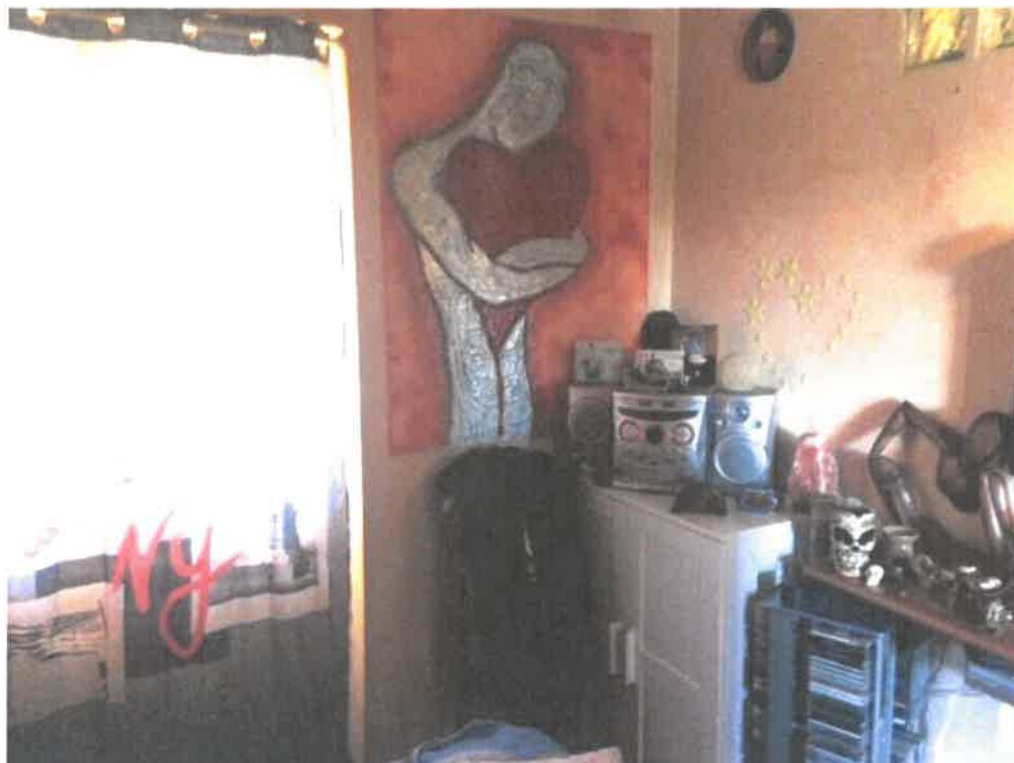
SCALA DI ACCESSO



INGRESSO



SOGGIORNO/CUCINA



PARETE IN LEGNO



BAGNO



CAMERA MATRIMONIALE

