

TRIBUNALE DI PORDENONE

Esecuzioni Immobiliari

All'Ill.ma G. E. Dott.ssa Roberta BOLZONI

E.I. n. 227/2017

ALLEGATO 4

-Documentazione fotografica

Abitazione sita in Comune di Caorle

PUNTI DI SCATTO

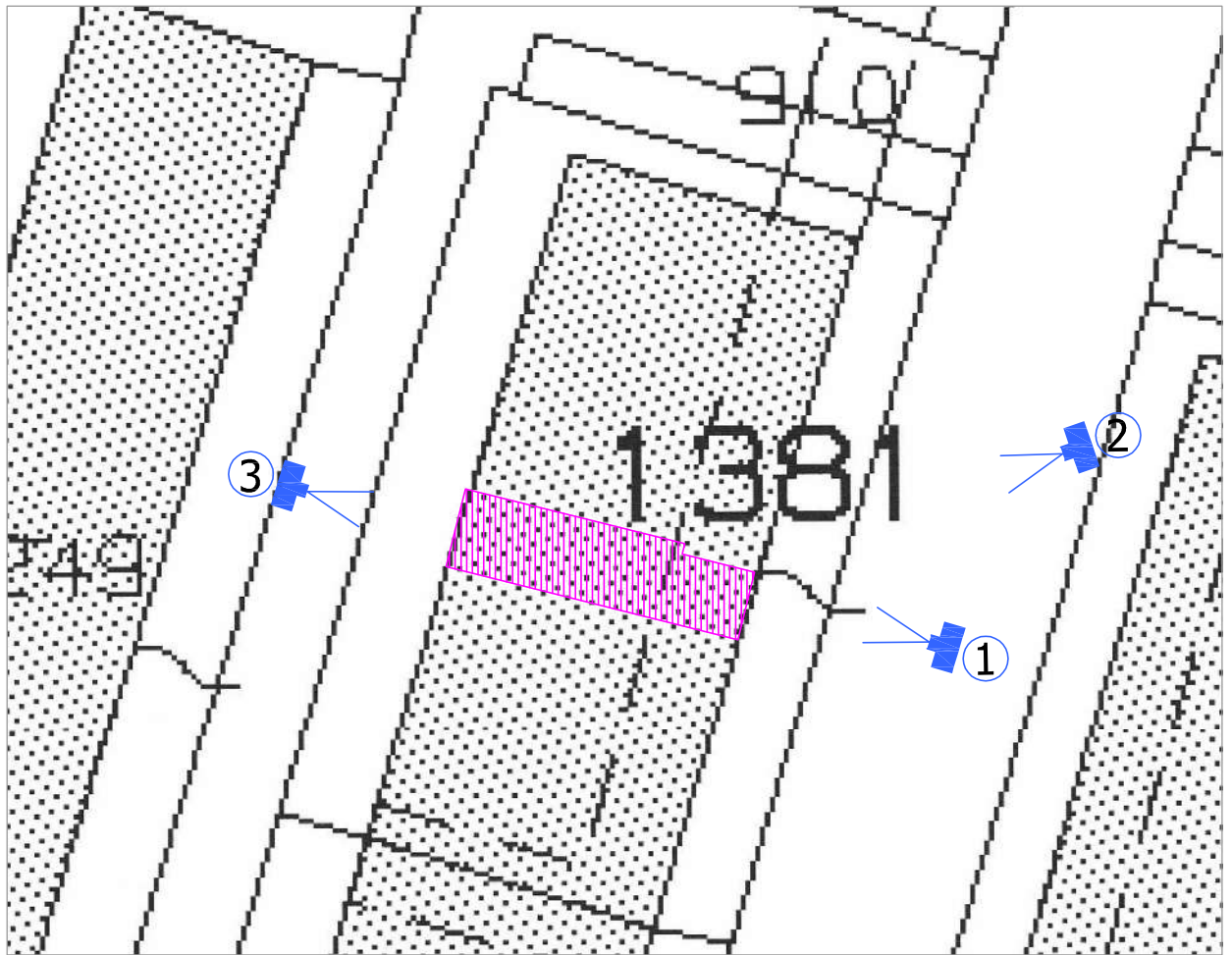




FOTO 1

FOTO 2





FOTO 3

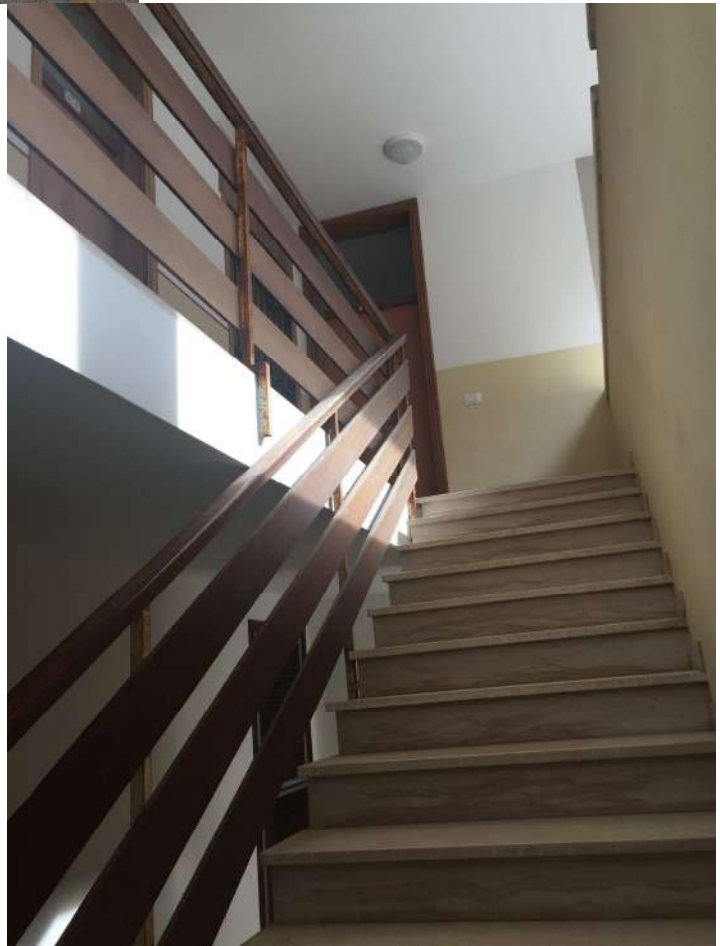


FOTO 4



FOTO 5

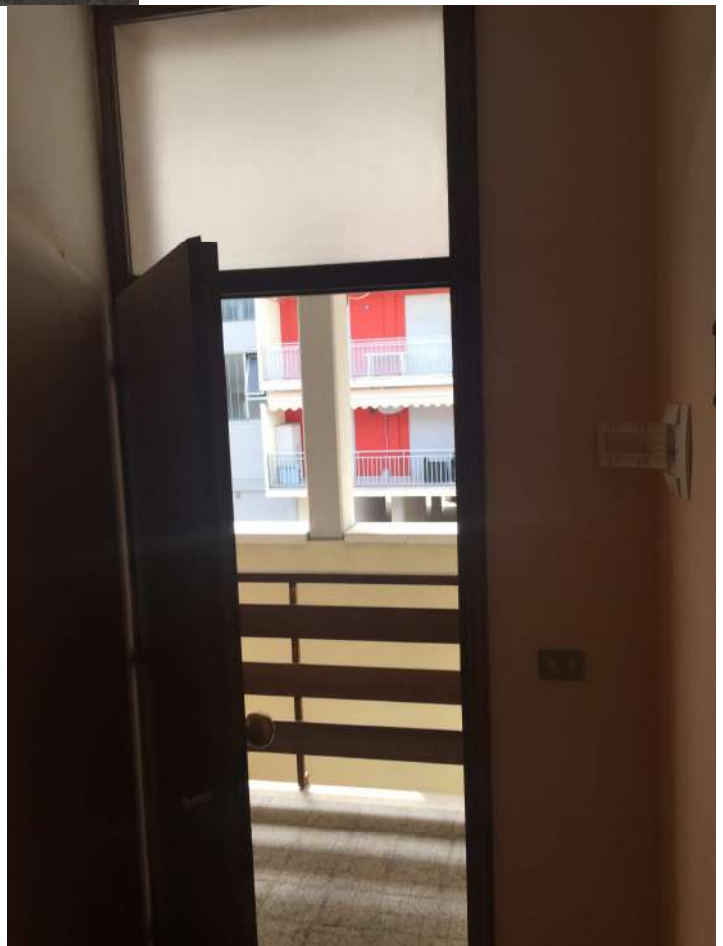


FOTO 6



FOTO 7

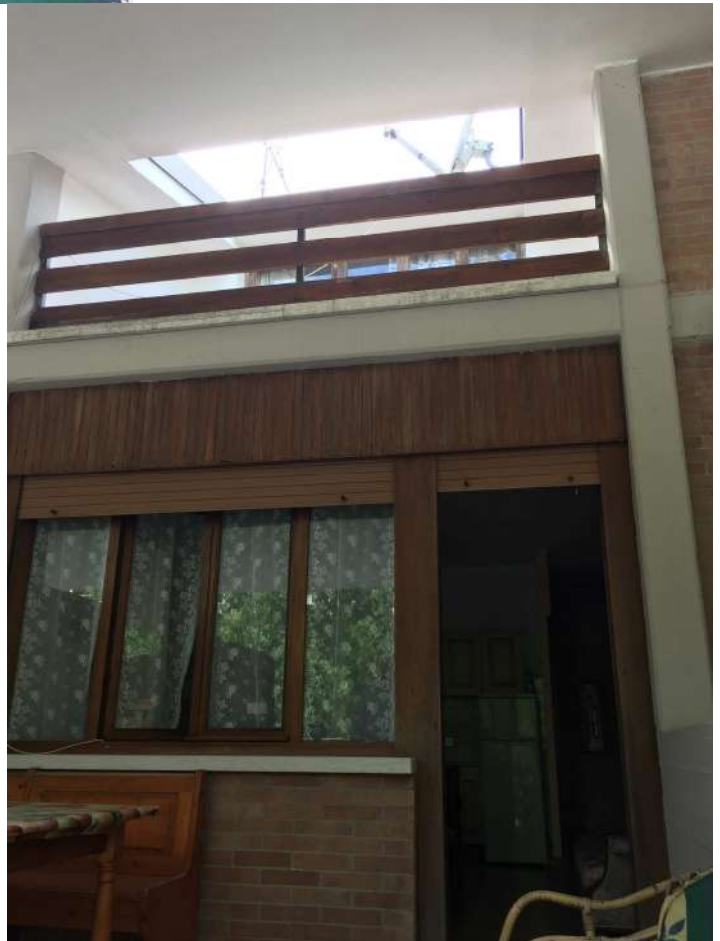


FOTO 8



FOTO 9



FOTO 10



FOTO 11



FOTO 12



FOTO 13

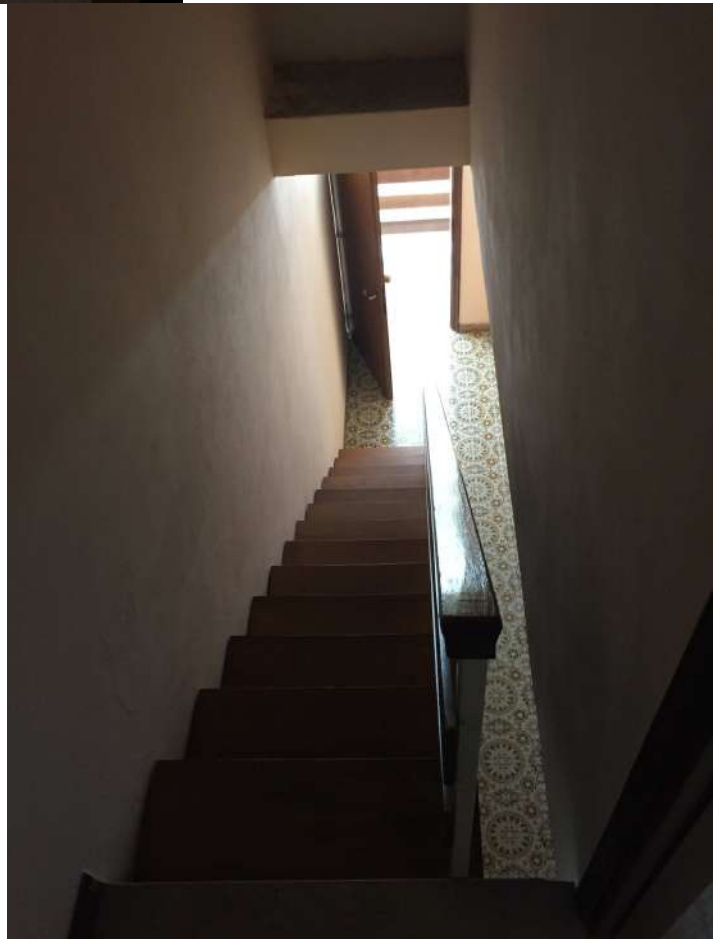


FOTO 14



FOTO 15

FOTO 16





FOTO 17



FOTO 18



FOTO 19



FOTO 20



FOTO 21



FOTO 22



FOTO 23



FOTO 24



FOTO 25



FOTO 26



FOTO 27



FOTO 28

Abitazione sita in Comune di San Michele al Tagliamento

PUNTI DI SCATTO

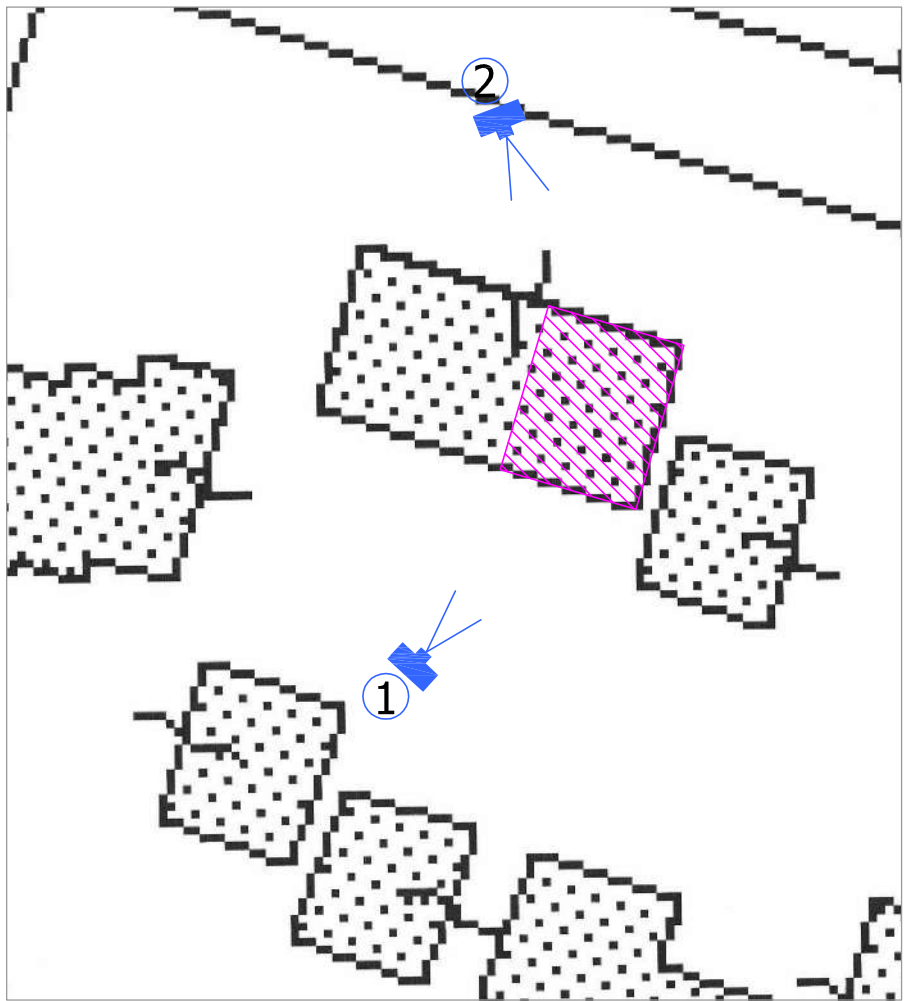




FOTO 1



FOTO 2



FOTO 3

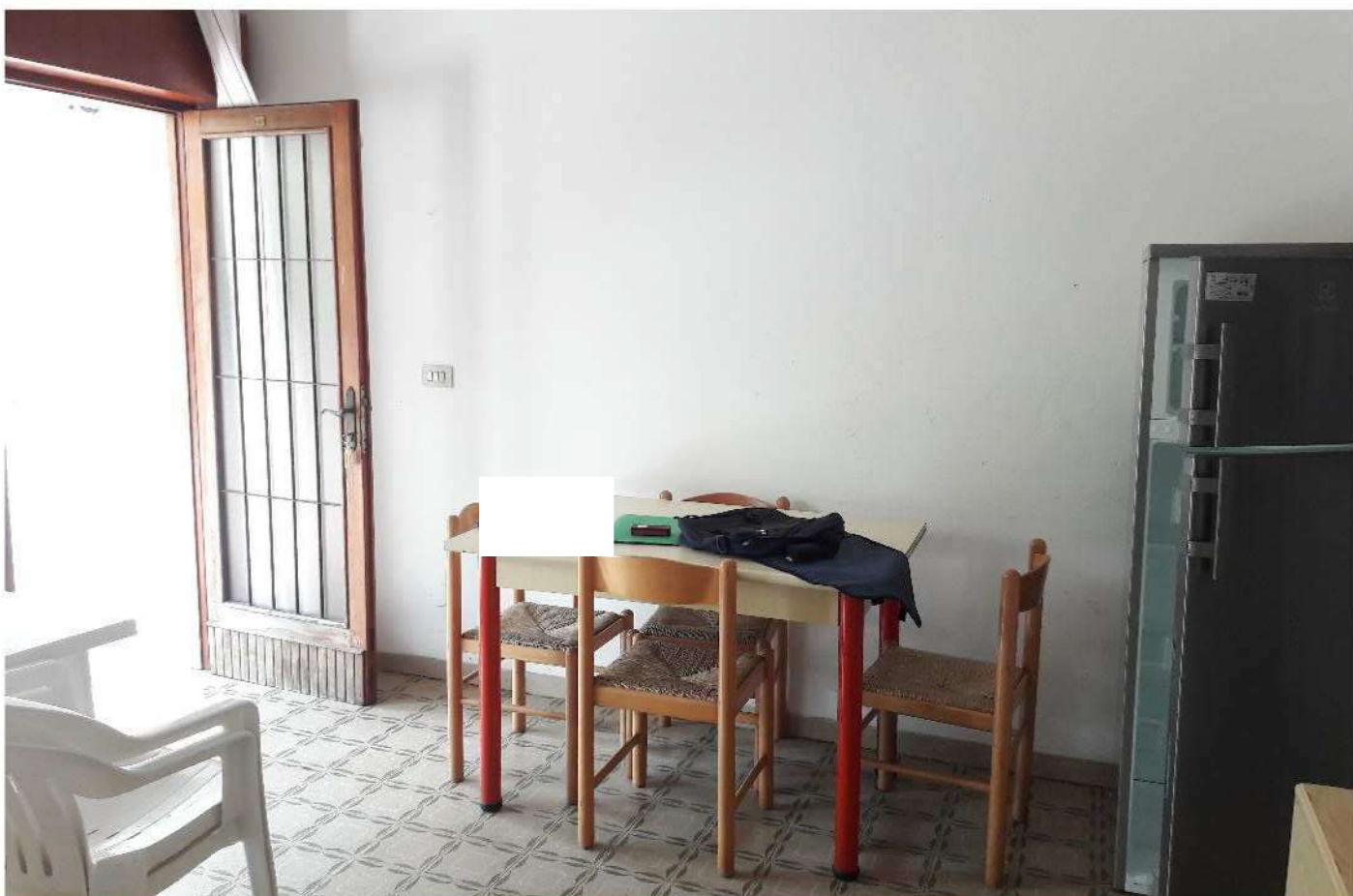


FOTO 4



FOTO 5



FOTO 6



FOTO 7

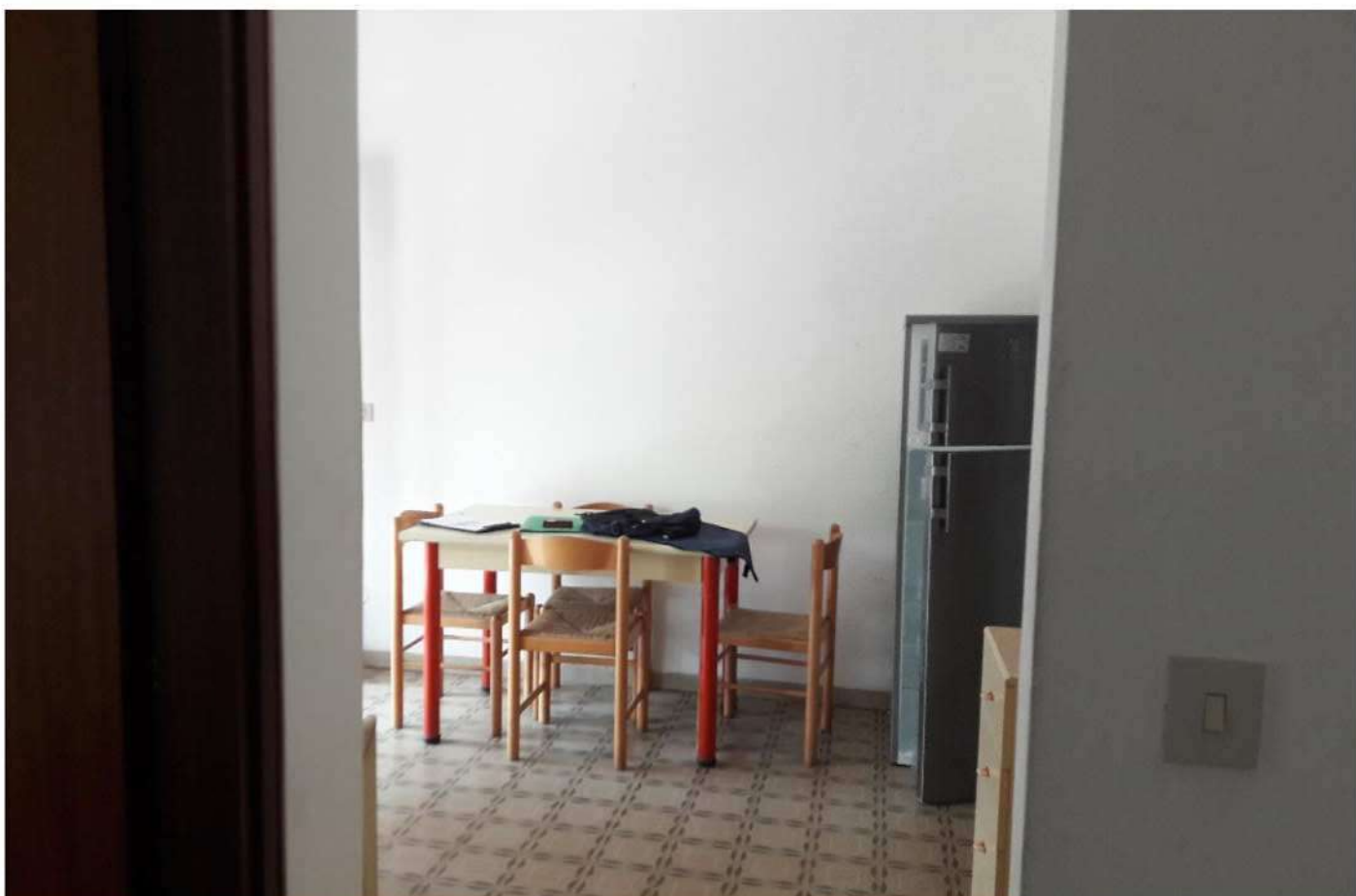


FOTO 8



FOTO 9

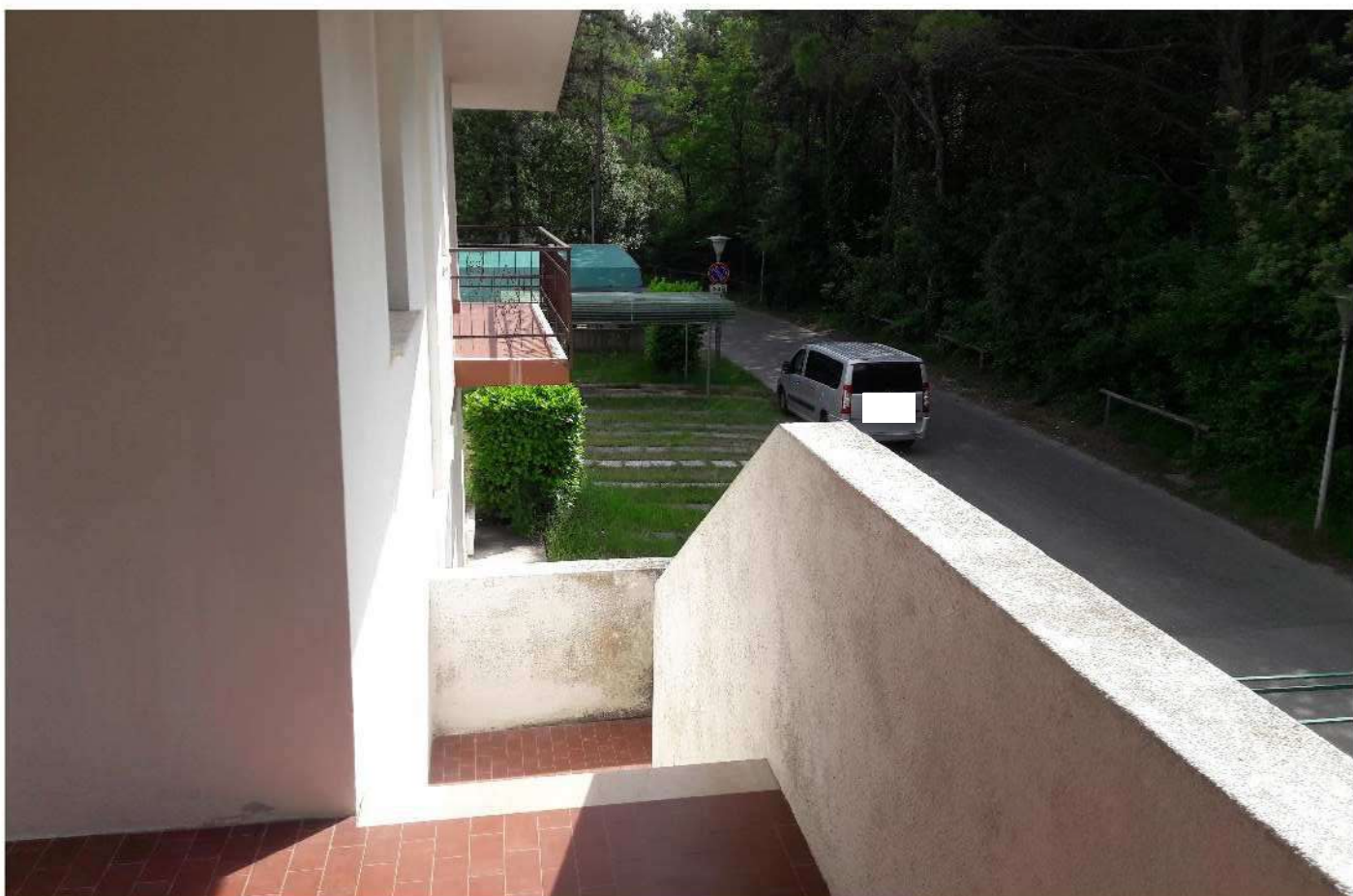


FOTO 10