

TRIBUNALE DI TREVISO

CANCELLERIA DELLE ESECUZIONI IMMOBILIARI

Esecuzione Immobiliare n. **164/2013** promossa da

**UNICREDIT CREDIT MANAGEMENT BANK S.P.A.**

con l'Avv.to Marianovella Pignata

G.E dott. Antonello Fabbro

\*\*\*\*\*

**RELAZIONE FOTOGRAFICA**

Treviso, lì 06.02.2018

Il C.T.U.

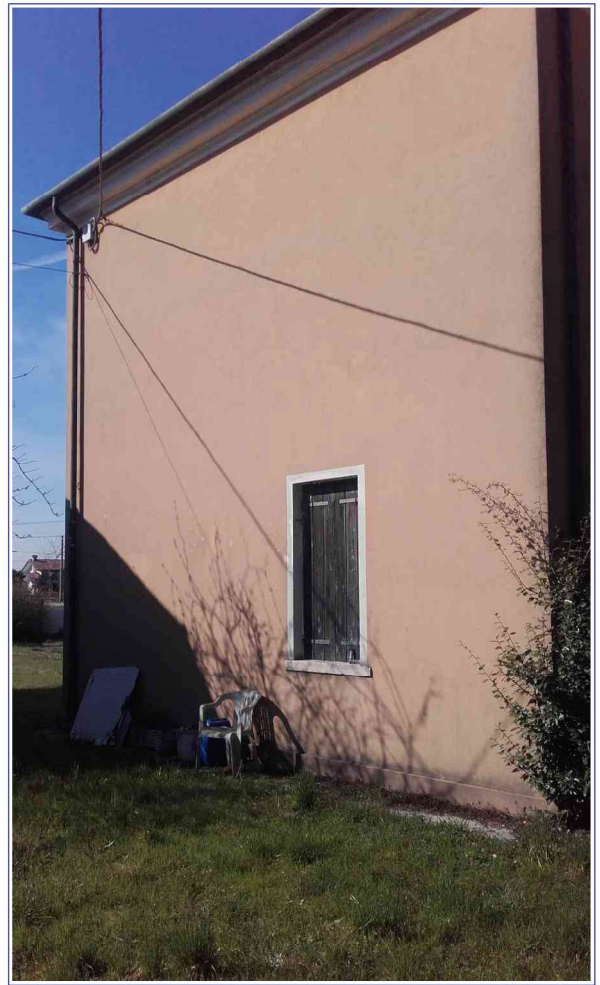
geom. Bruno Cisterna



01 - Esterno sud - INGRESSO



02 – Esterno sud – CORPI A - A1



03 – Esterno Est – CORPO A

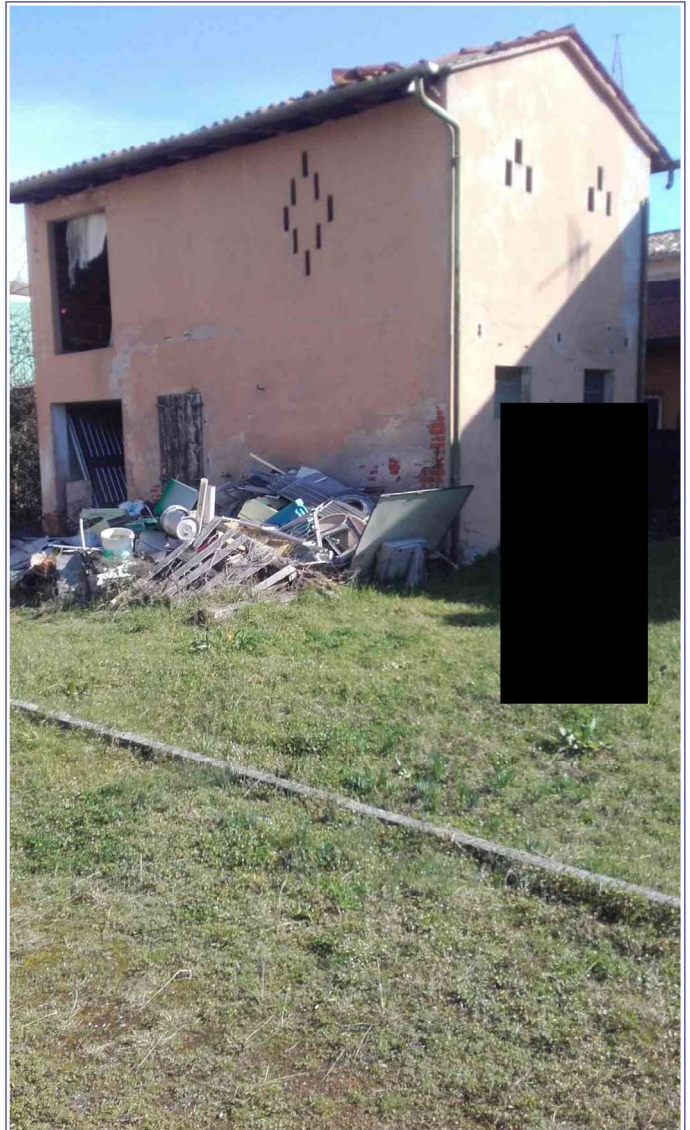


04 – Esterno Nord – CORPO A





05 – Esterno CORPO B

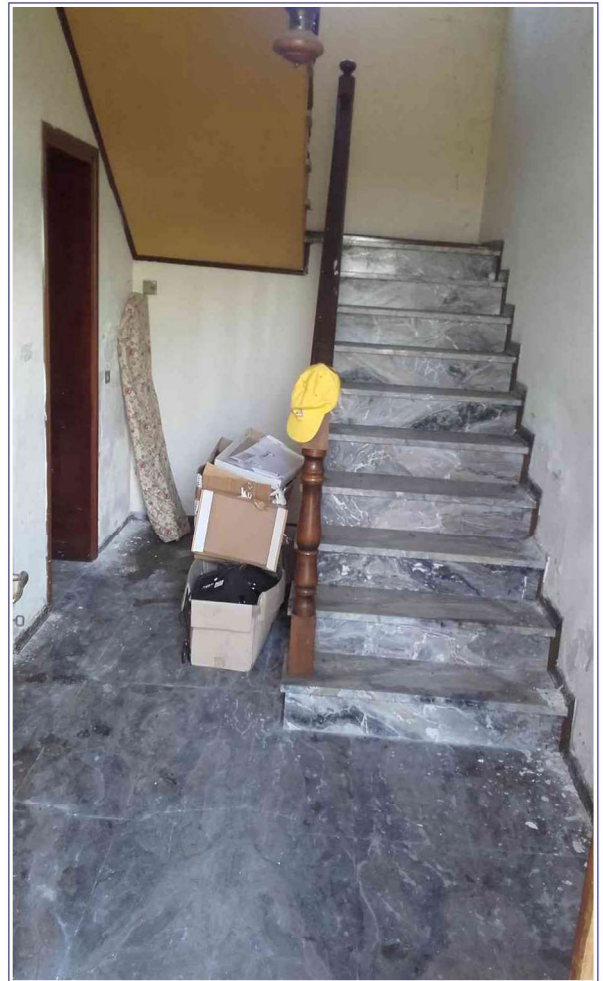


06 – Esterno CORPO C



07 – Esterno CORPO D

**INTERNI**

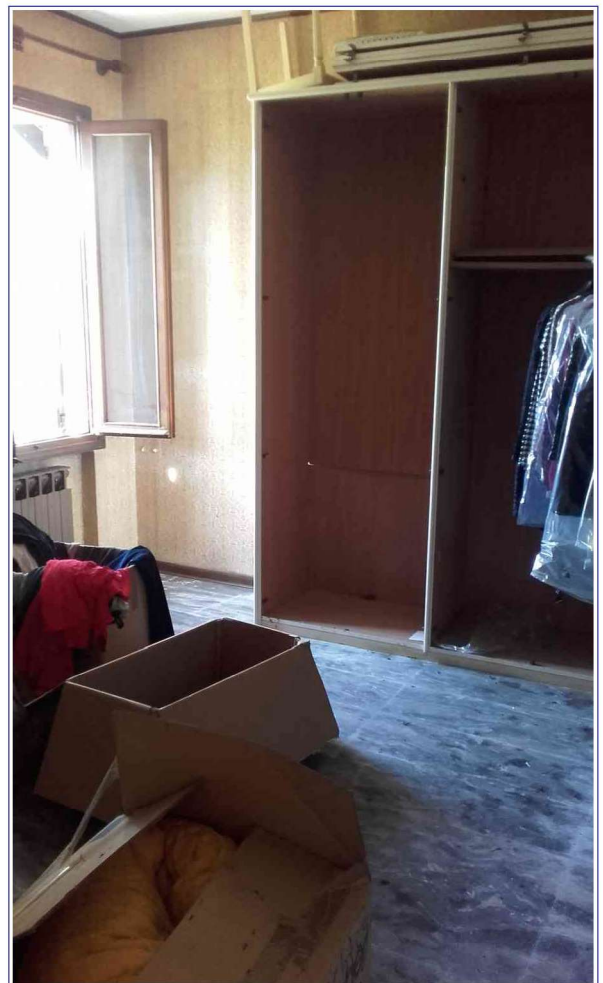


08 - CORPO A – Ingresso Piano Terra





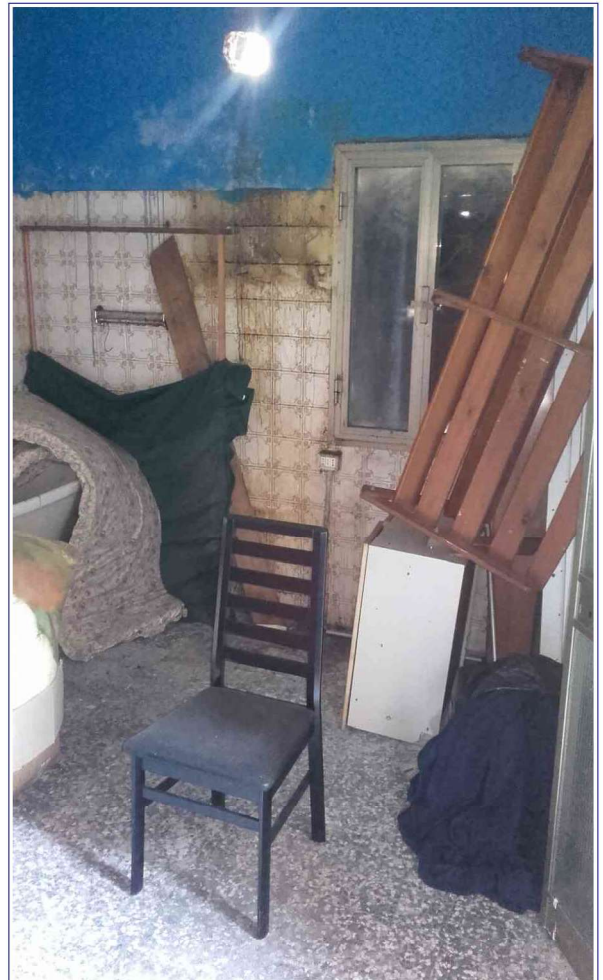
09 – CORPO A – Cucina – Piano Terra



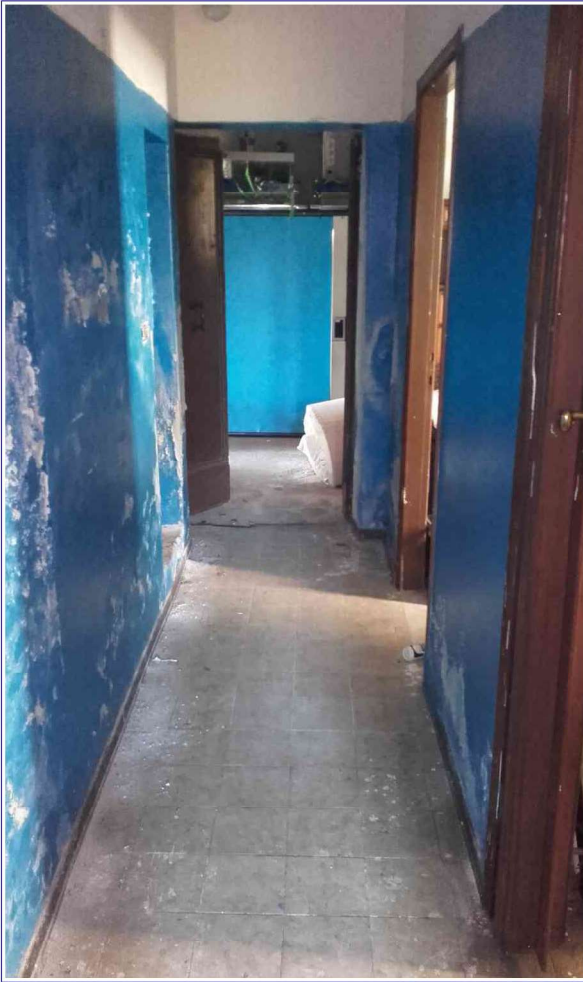
10 – CORPO A – Soggiorno Piano Terra



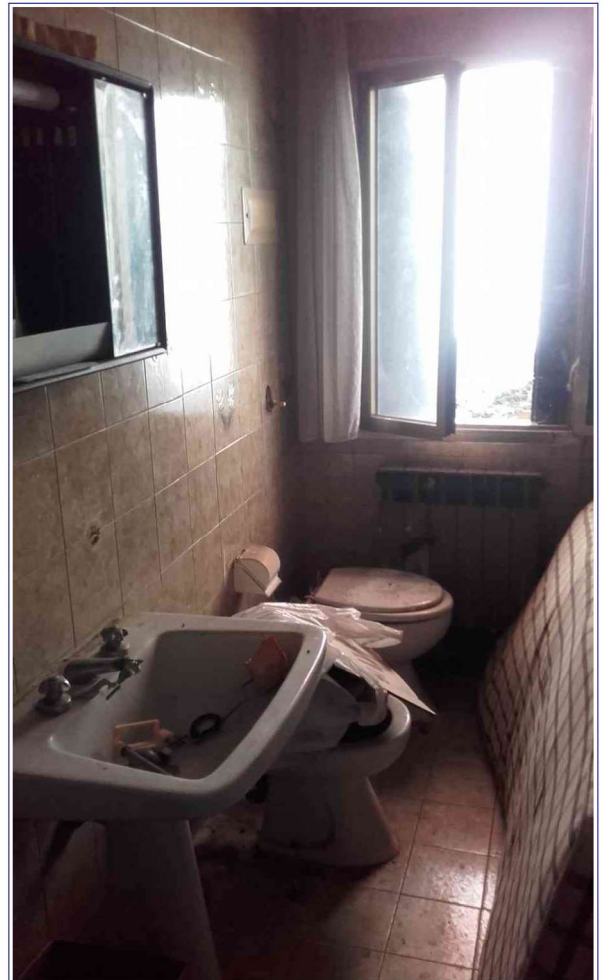
11 – CORPO A – Ripostiglio Piano Terra



12 -CORPO A – Lavanderia Piano Terra



13 – CORPO A – Corridoio servizi Piano Terra

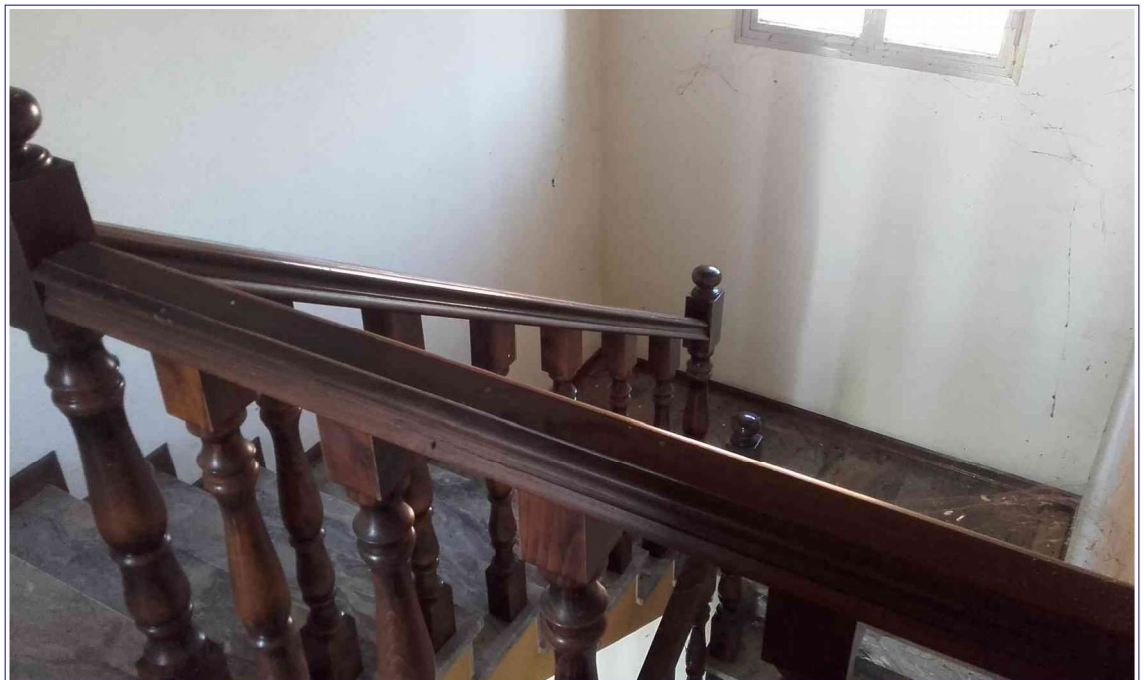


14 – CORPO A – Bagno Piano Terra





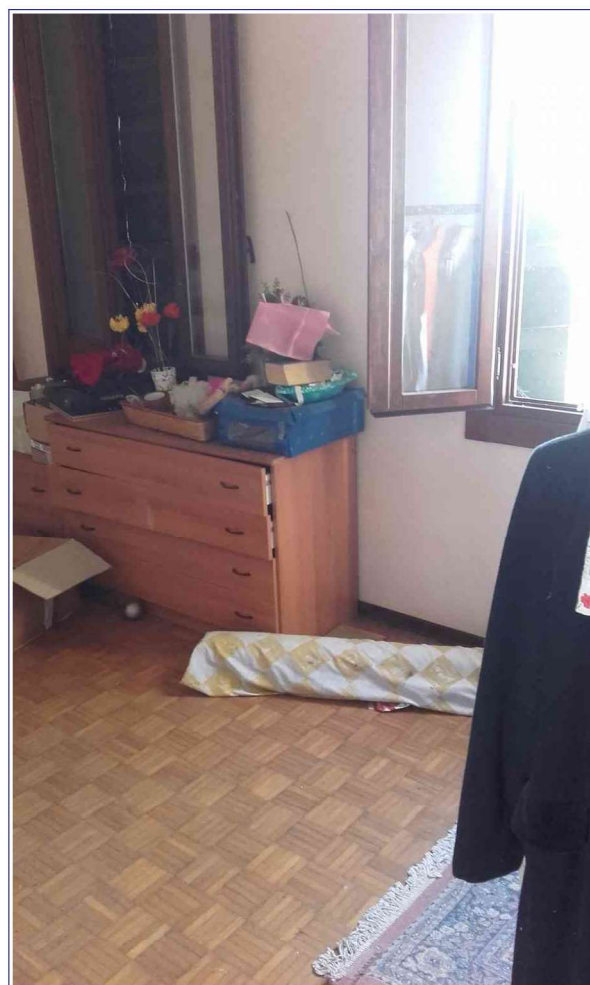
15 – CORPO A – Ripostiglio Piano Terra



16 – CORPO A – Vano scale - Piano Primo



17 – CORPO A – Camera Nord/Est – Piano Primo



18 – CORPO A – Camera Sud/Est – Piano Primo



19 – CORPO A – Bagno Piano Primo



20 – CORPO A – Camera Sud/Ovest – Piano Primo

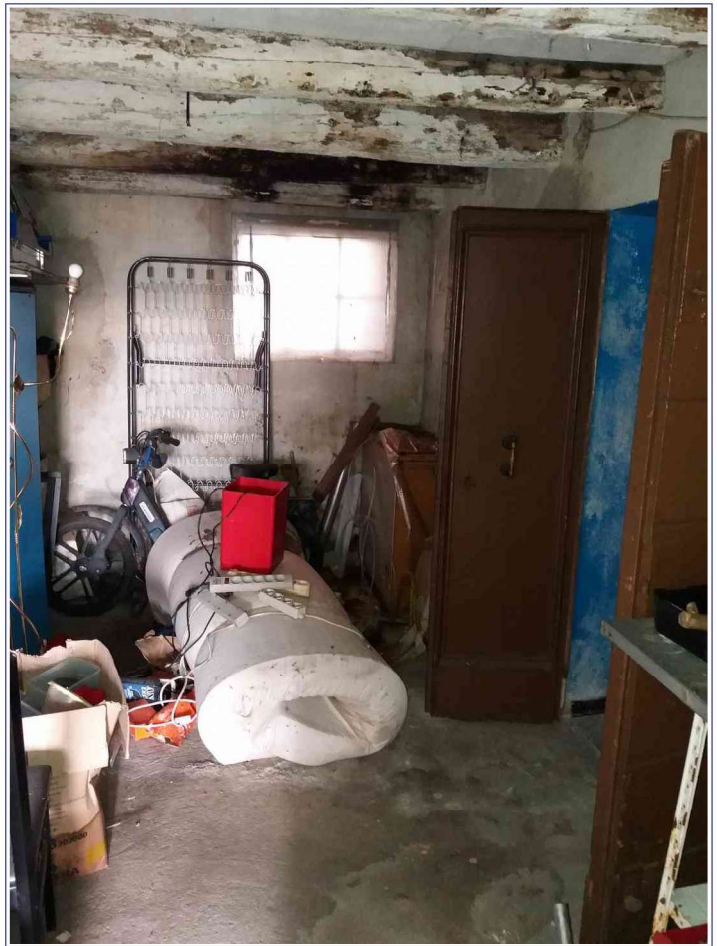




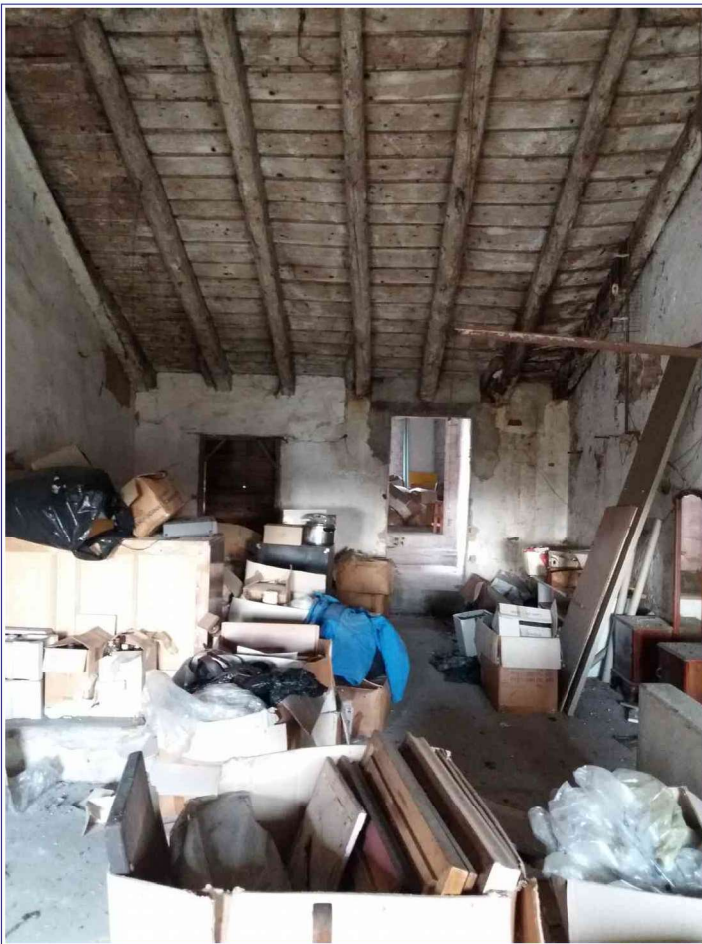
21 – CORPO A – Camera Nord/Ovest – Piano Primo



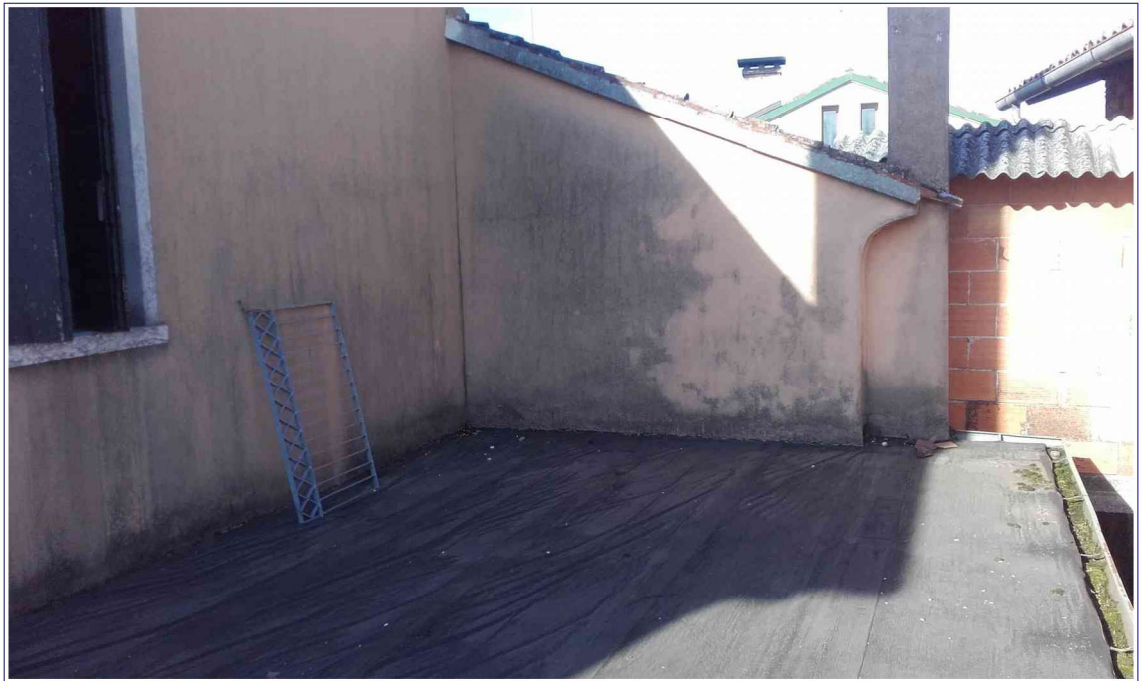
22 – CORPO A1 – Interno piano terra



23 – CORPO A1 – Interno piano terra



24 – CORPO A1 – Interno piano primo

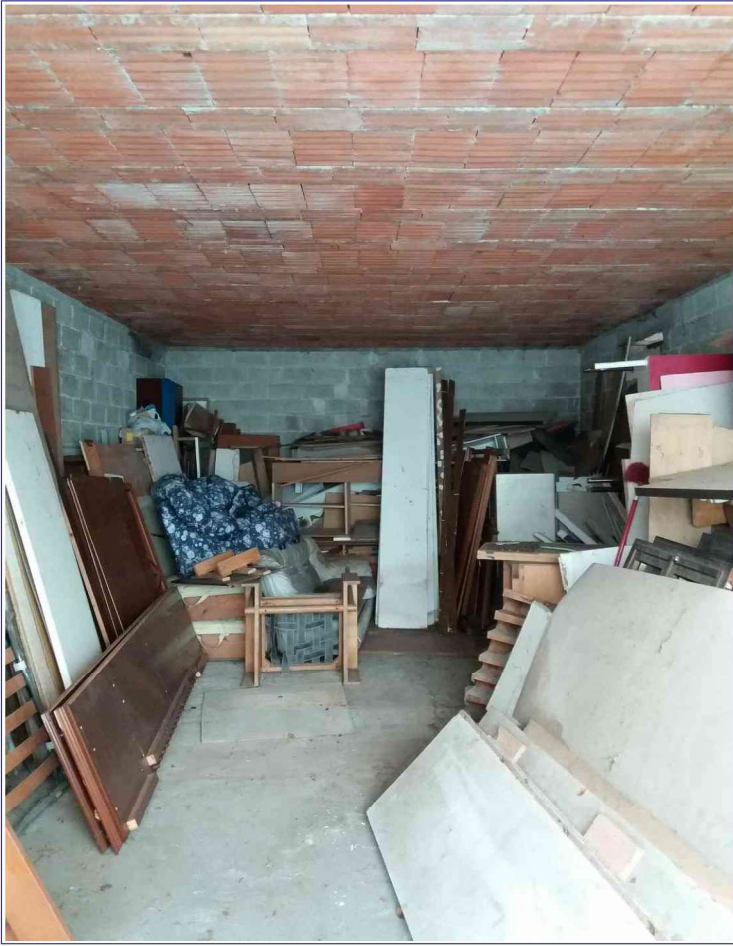


25 – Copertura a terrazza – Nord - Piano Primo

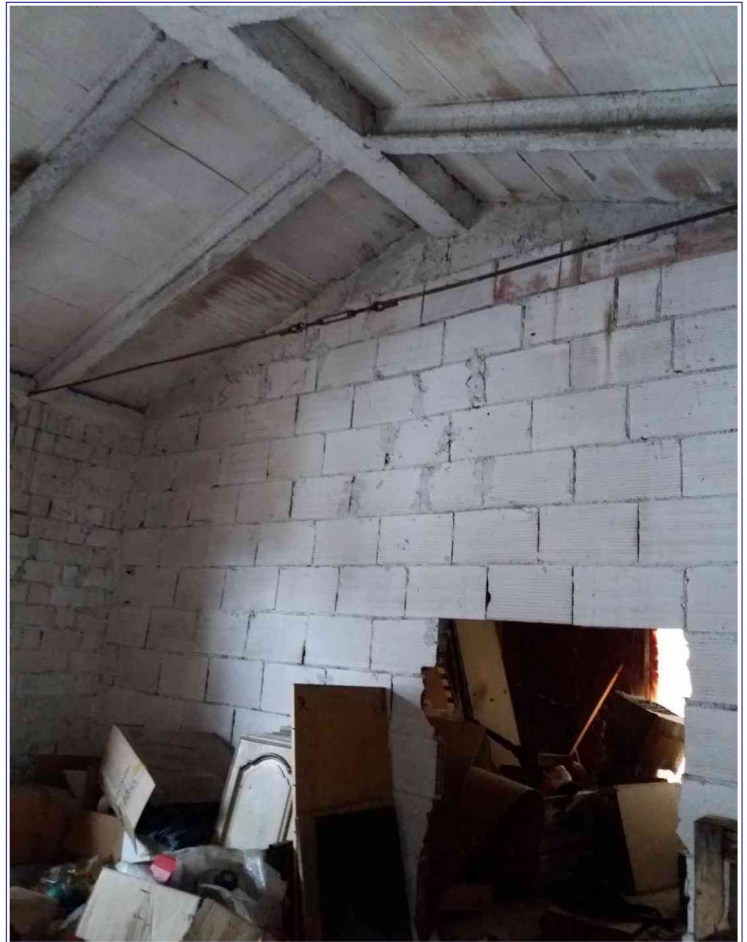


26 – CORPO C – INTERNO - Piano Terra

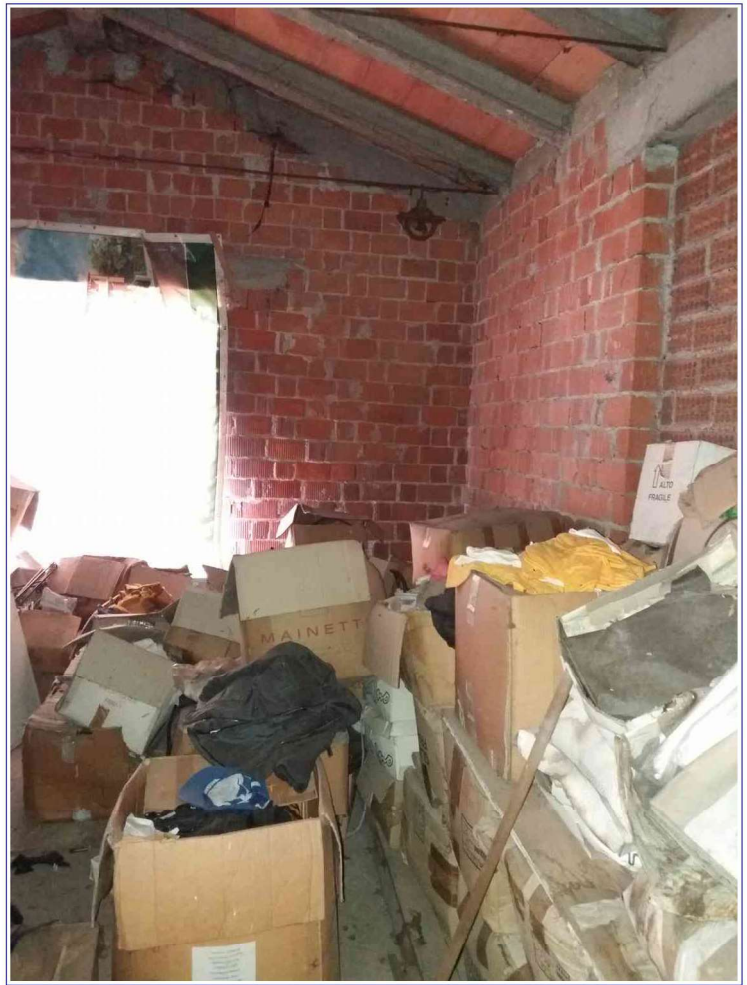




27 – CORPO D – INTERNO - Piano Terra



28 – CORPO D – INTERNO - Piano Primo



29 – CORPO D – INTERNO - Piano Primo



30 – Particolare recinzione fronte strada