

TRIBUNALE DI PORDENONE
E.I. 29/2015

GIUDICE ESECUTIVO: Dr. Francesco Petrucco Toffolo

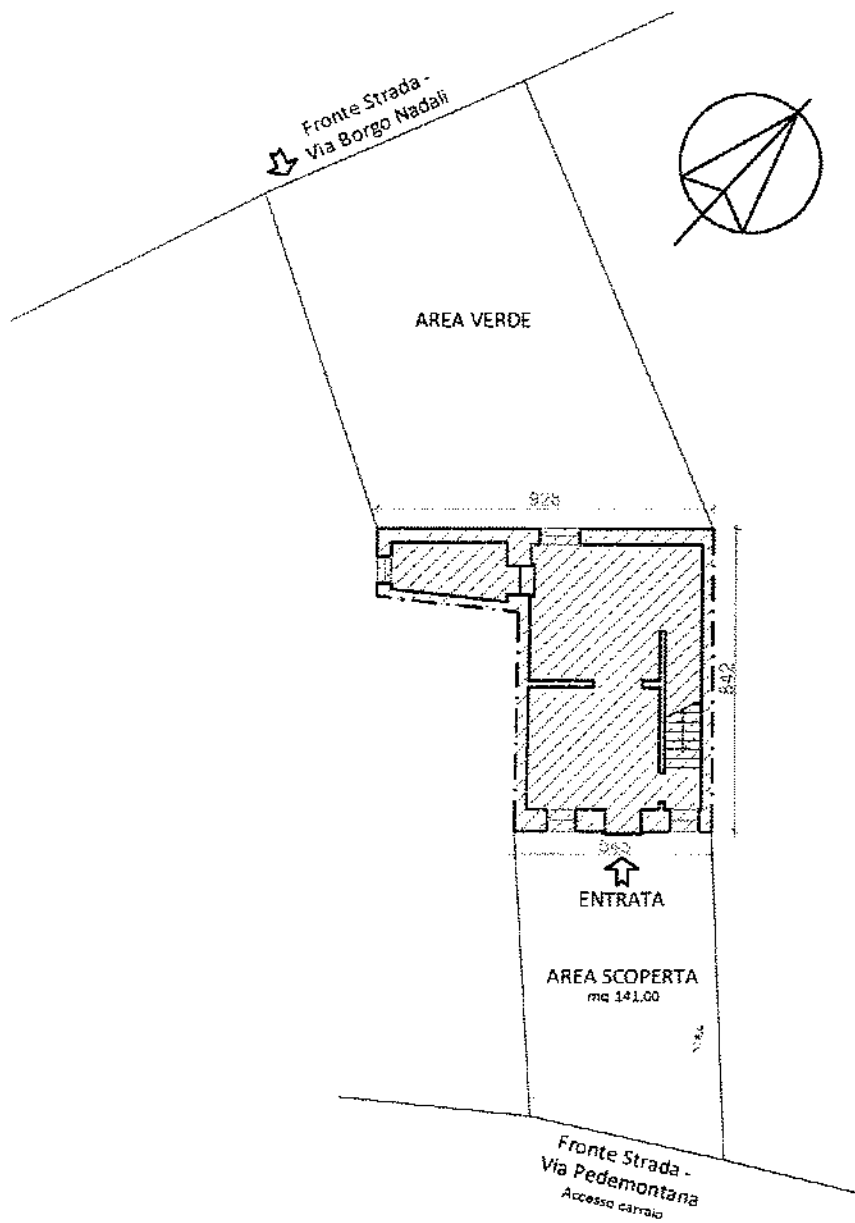
C.T.U.: Geom. Angelo Mirolo-Via Di Mezzo, n.6, Spilimbergo (PN)-

CREDITORE PROCEDENTE: ITALFONDIARIO S.P.A.

DEBITORE ESECUTATO: 

Documenti allegati:

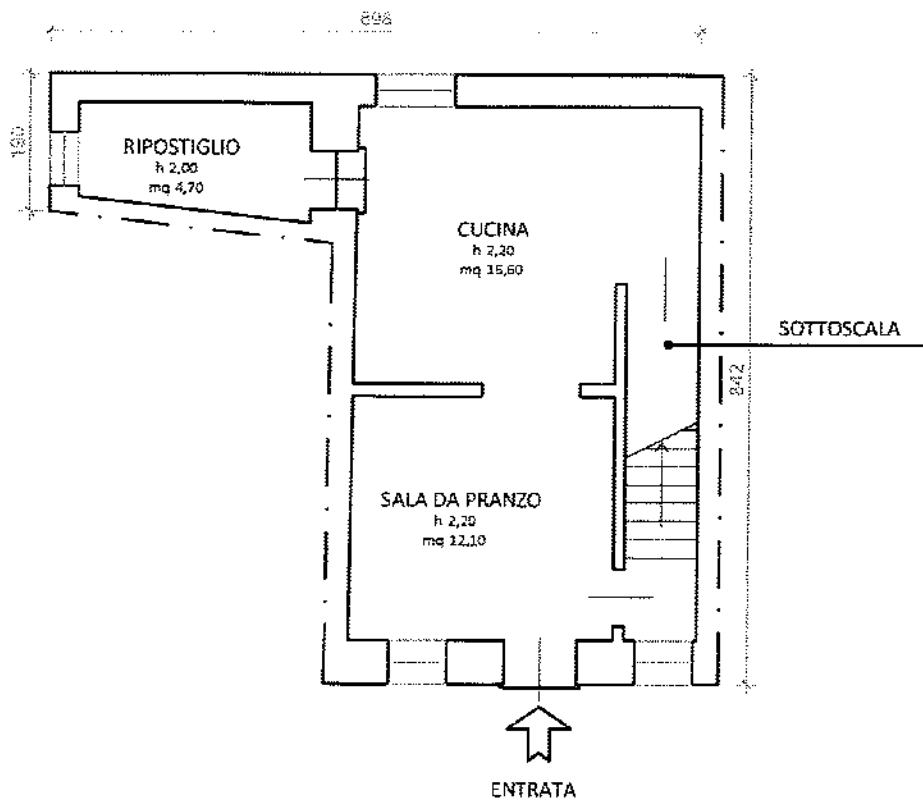
- a) *Corpo A: Planimetria Generale, Piante Piano Terra, Piano Primo, Piano Secondo, Piano Terzo;*
- b) *Corpo B: Planimetria.*



PLANIMETRIA GENERALE

Immobile sito in Caneva (PN), Via Pedemontana n.3
 Fg. 21 Map. 339
 Scala 1:200

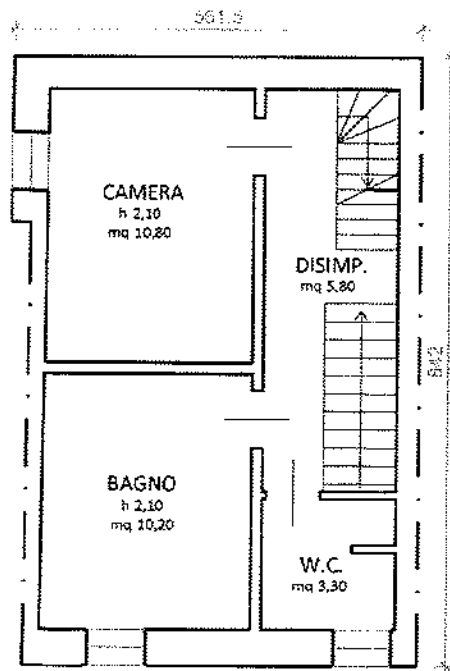
CORPO A



PIANO TERRA

Immobile sito in Caneva (PN), Via Pedemontana n.3
Fig. 21 Map. 339
Scala 1:100

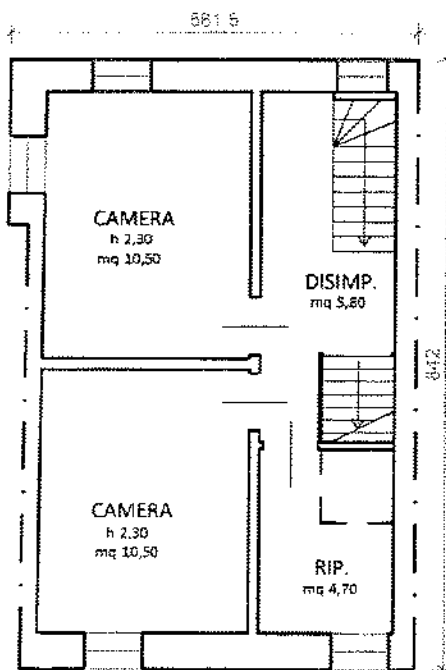
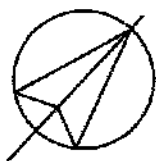
CORPO A



PIANO PRIMO

Immobile sito in Caneva (PN), Via Pedemontana n.3
Fig. 21 Map. 339
Scala 1:100

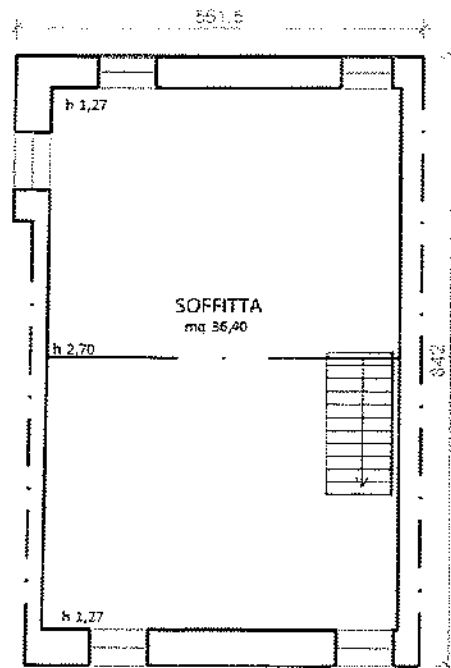
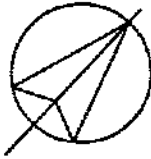
CORPO A



PIANO SECONDO

Immobile sito in Caneva (PN), Via Pedemontana n.3
Fg. 21 Map. 339
Scala 1:100

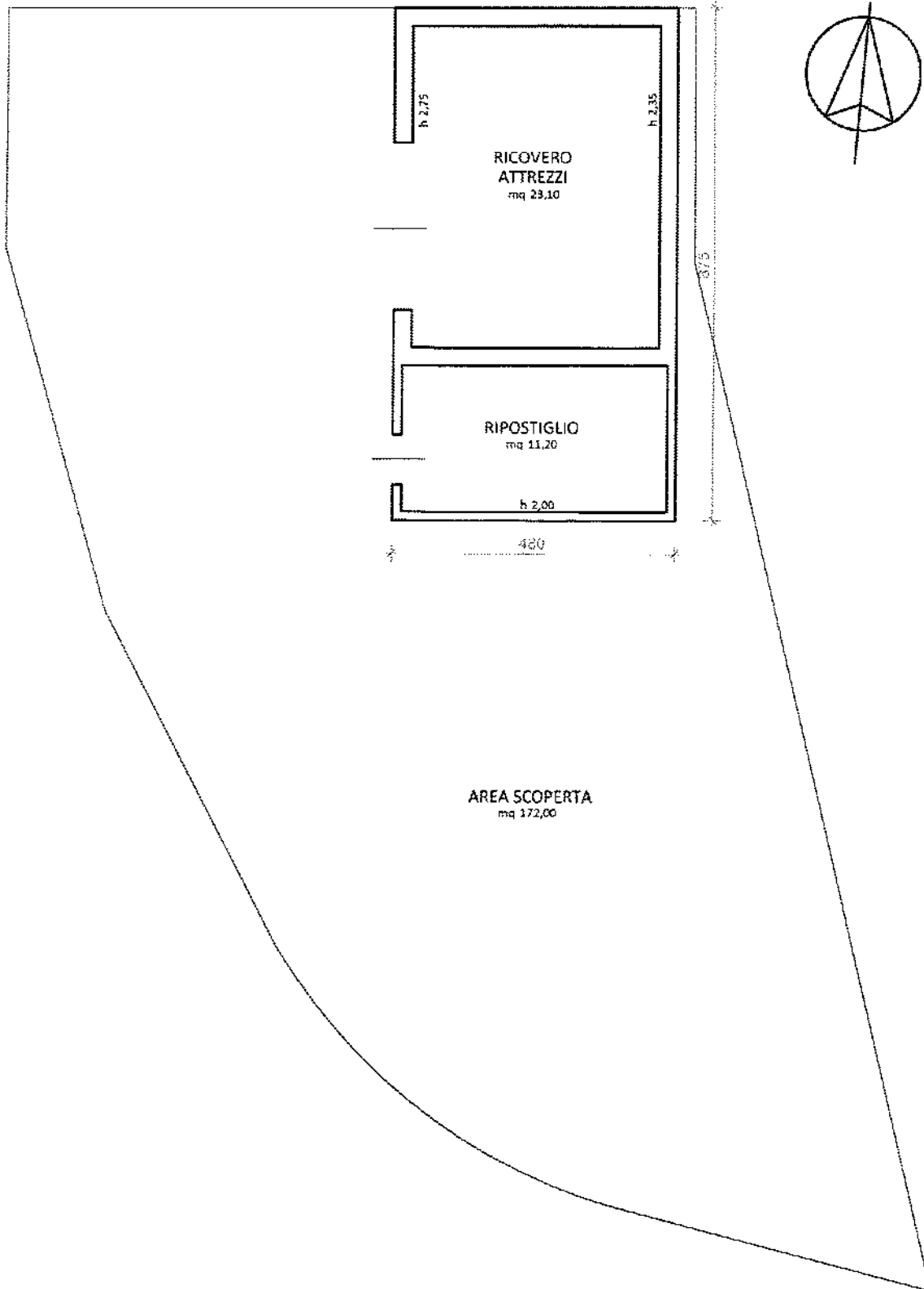
CORPO A



PIANO TERZO

Immobile sito in Caneva (PN), Via Pedemontana n.3
Fig. 21 Map. 339
Scala 1:100

CORPO A



Immobile sito in Caneva (PN), Via Pedemontana
 Fig. 21 Map. 650
 Scala 1:100

CORPO B