

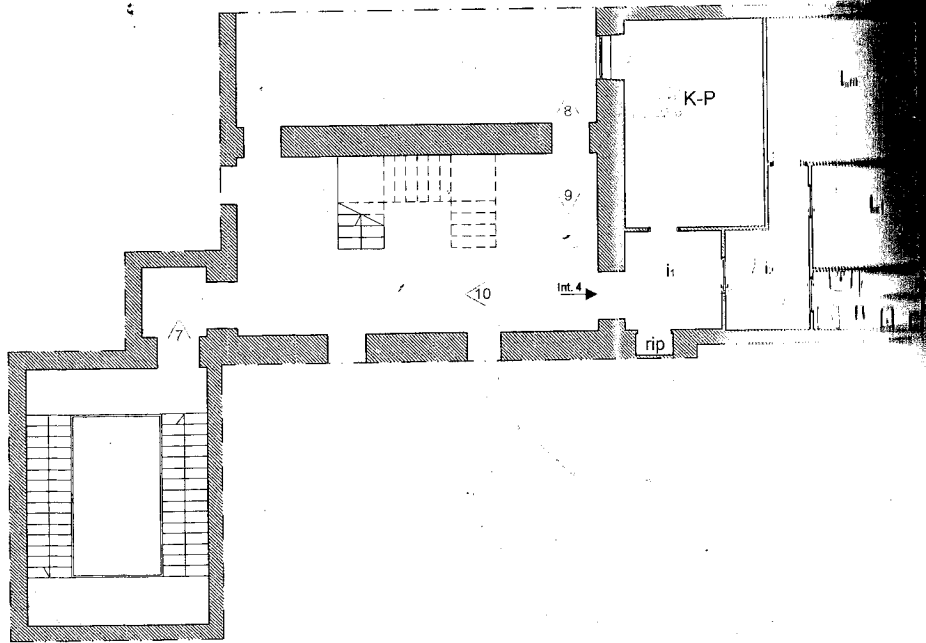
N

Carmela Di Pierri

Rilievo fotografico
 Proprietà XXXXXXXXXX

scala 1:50

CARMELA DIPIERRI
 ARCHITETTO



Assunto Difesa

Rilievo fotografico
Proprietà [REDACTED]

scala 1:100

CARMELA DIP
ARCHITET

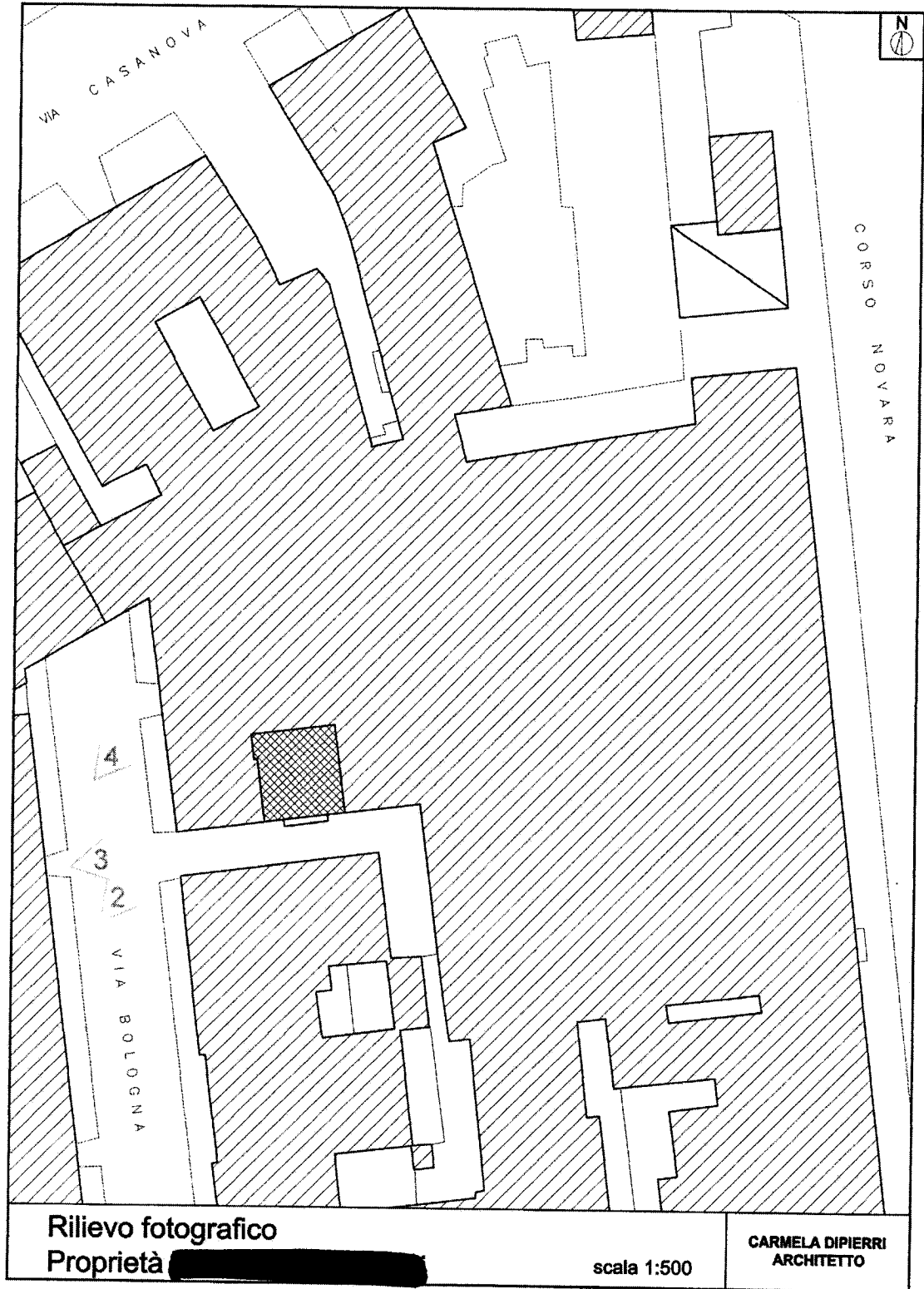




Foto 1 Vista dall'alto



Foto 2 Condominio via Bologna civ. 80



Foto 3 Strada privata (lato Sud)



Foto 4 Ingresso del civico 80 di via Bologna

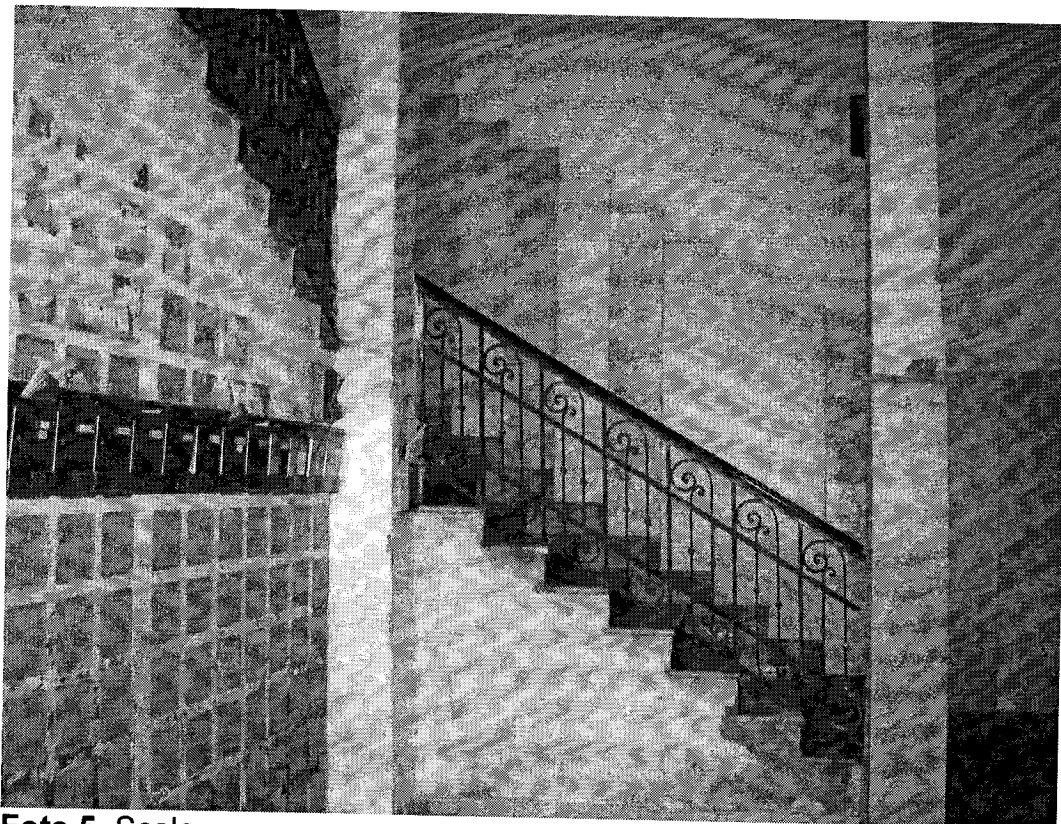


Foto 5 Scala

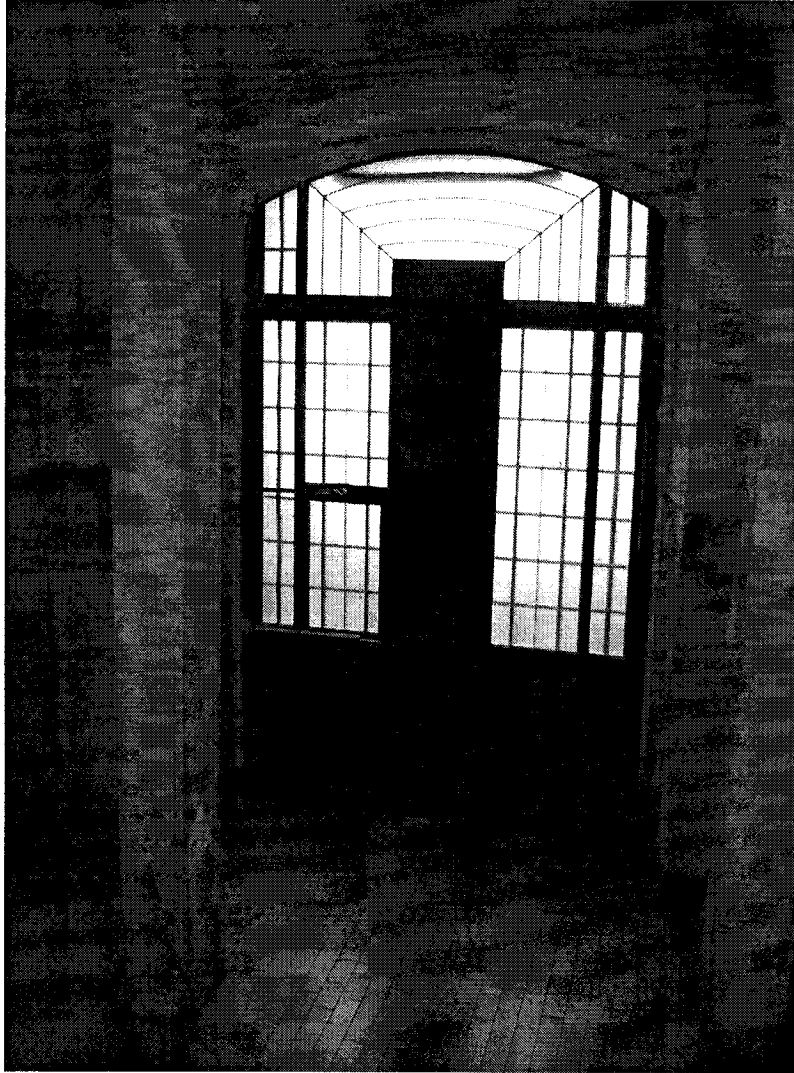


Foto 6 Portone d'ingresso

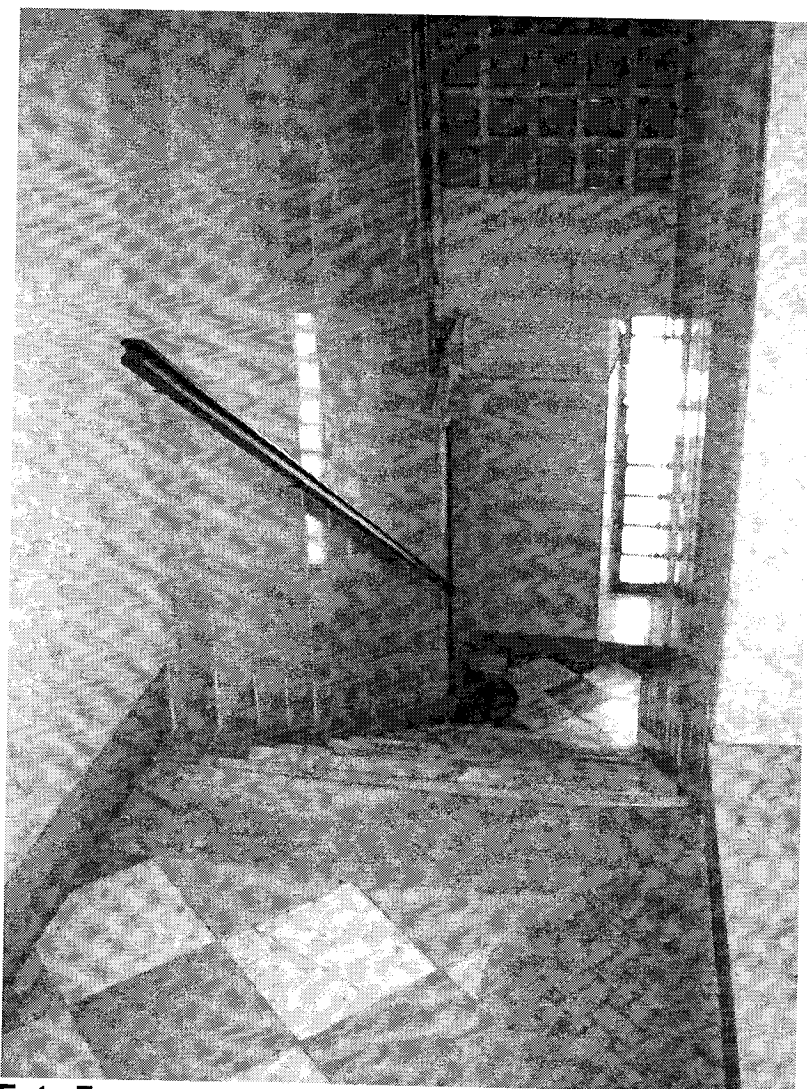


Foto 7 Scala Condominiale piano primo



Foto 8 Area condominiale di accesso

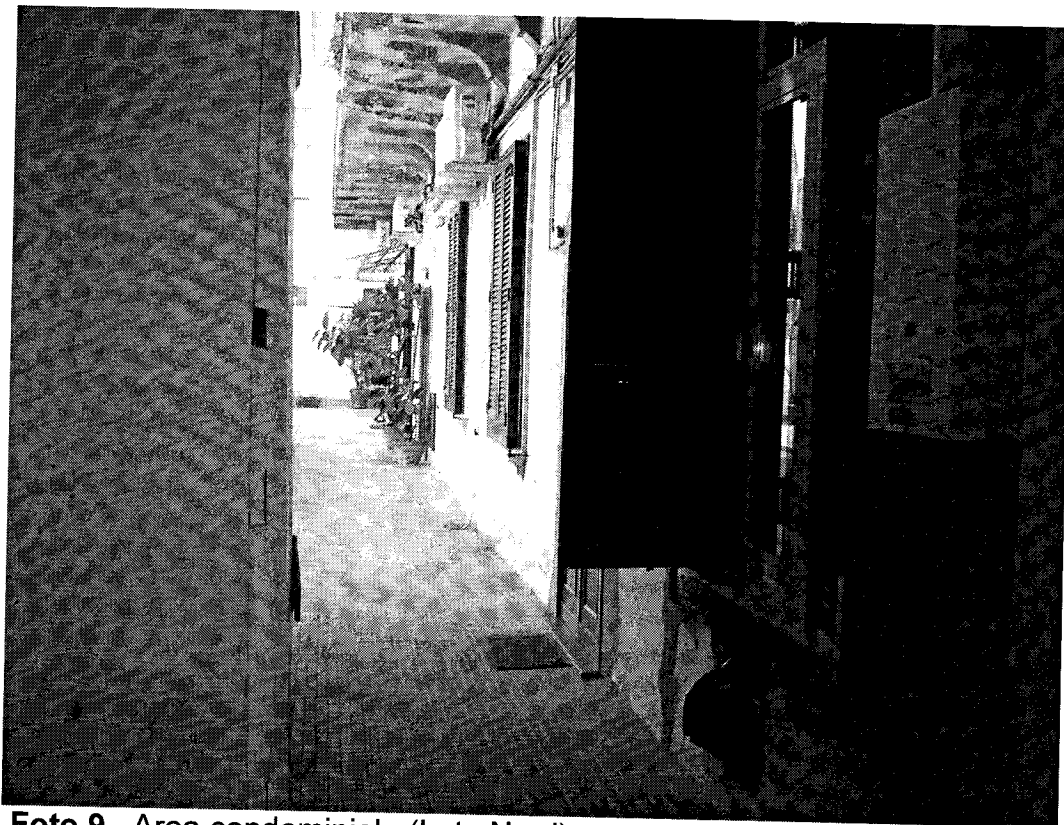


Foto 9 Area condominiale (Lato Nord)

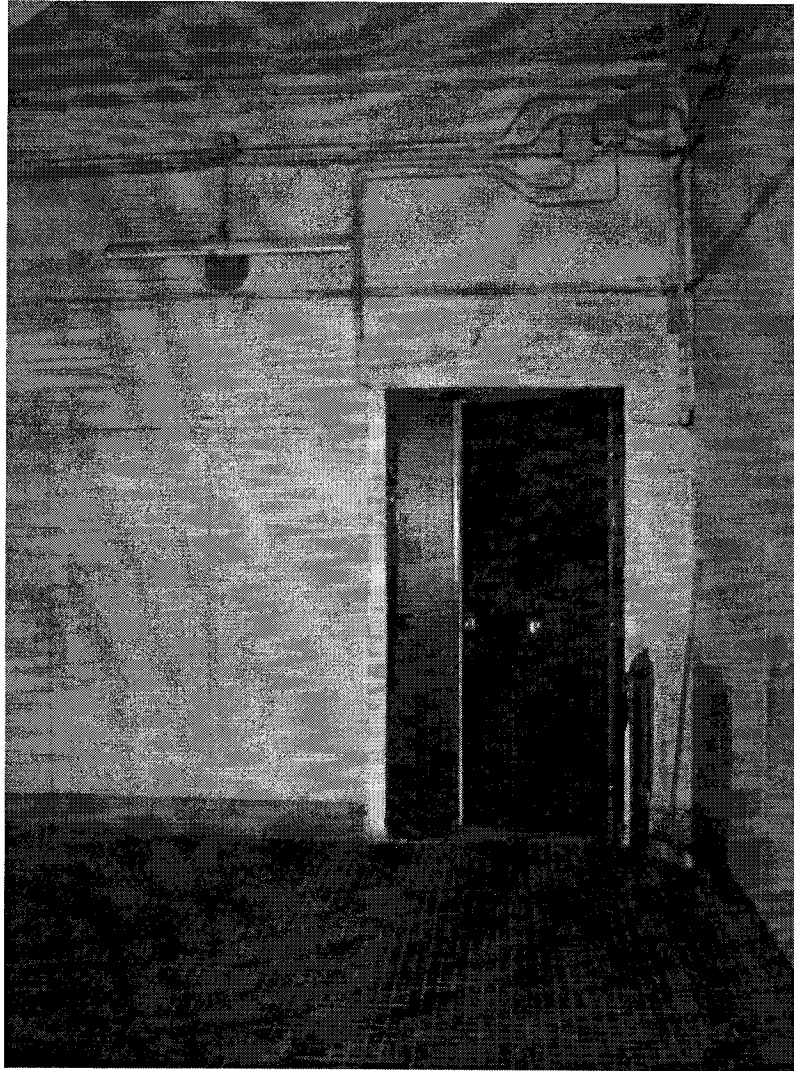


Foto10 Ingresso all'appartamento



Foto 11 Ingresso dall'interno dell'appartamento

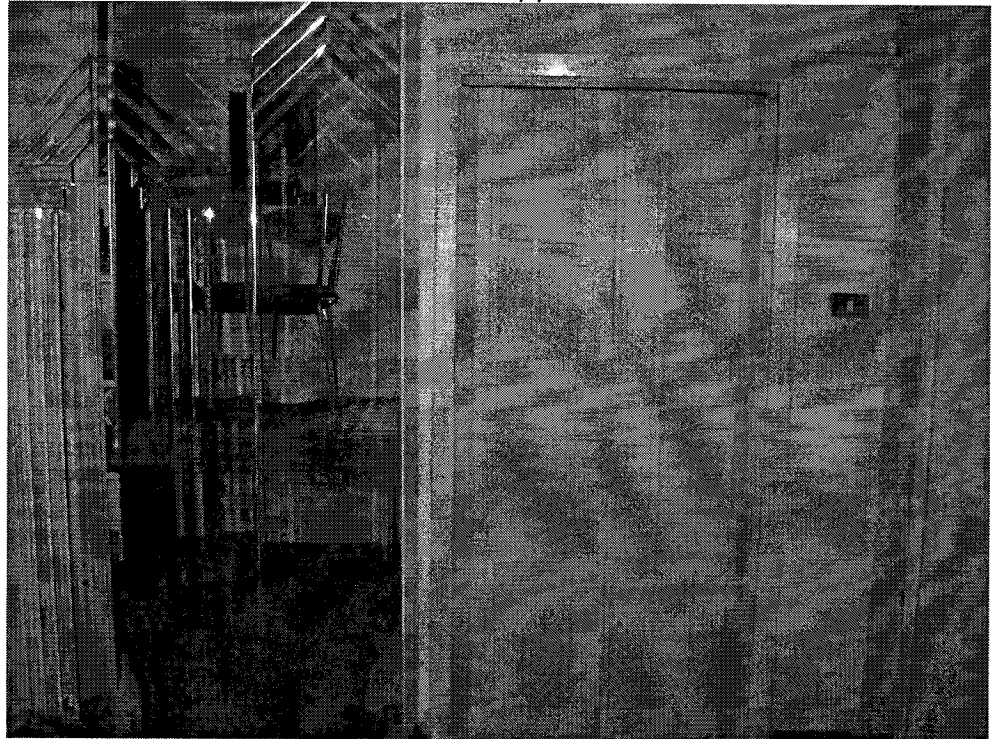


Foto 12 Ripostiglio

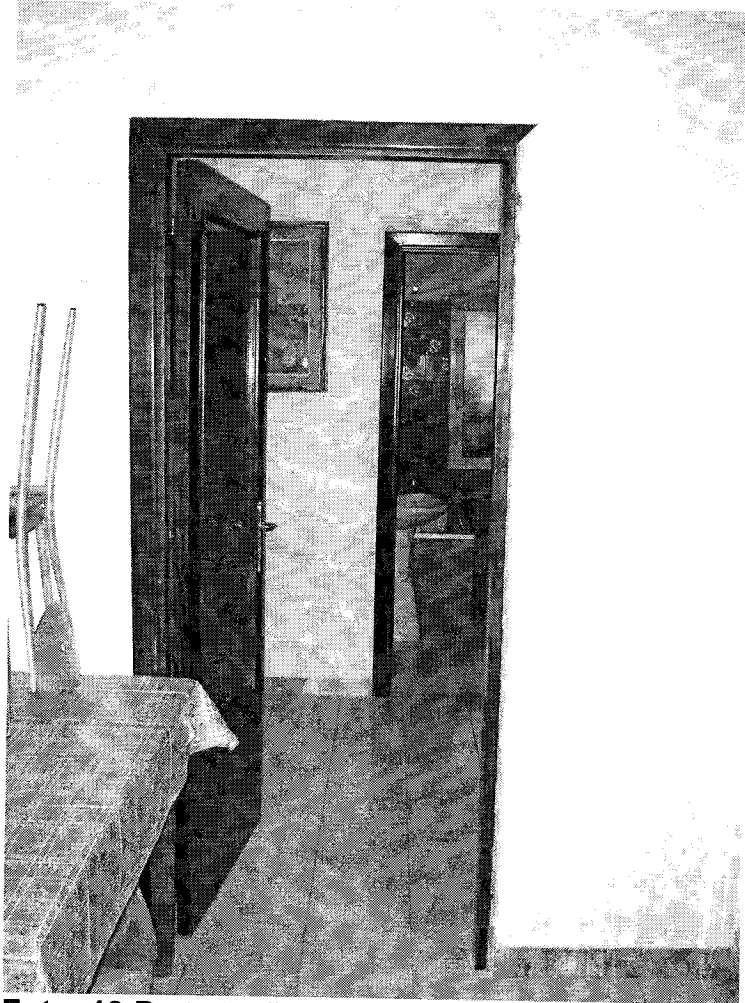


Foto 13 Porta tra il disimpegno i1 ed il corridoio i2

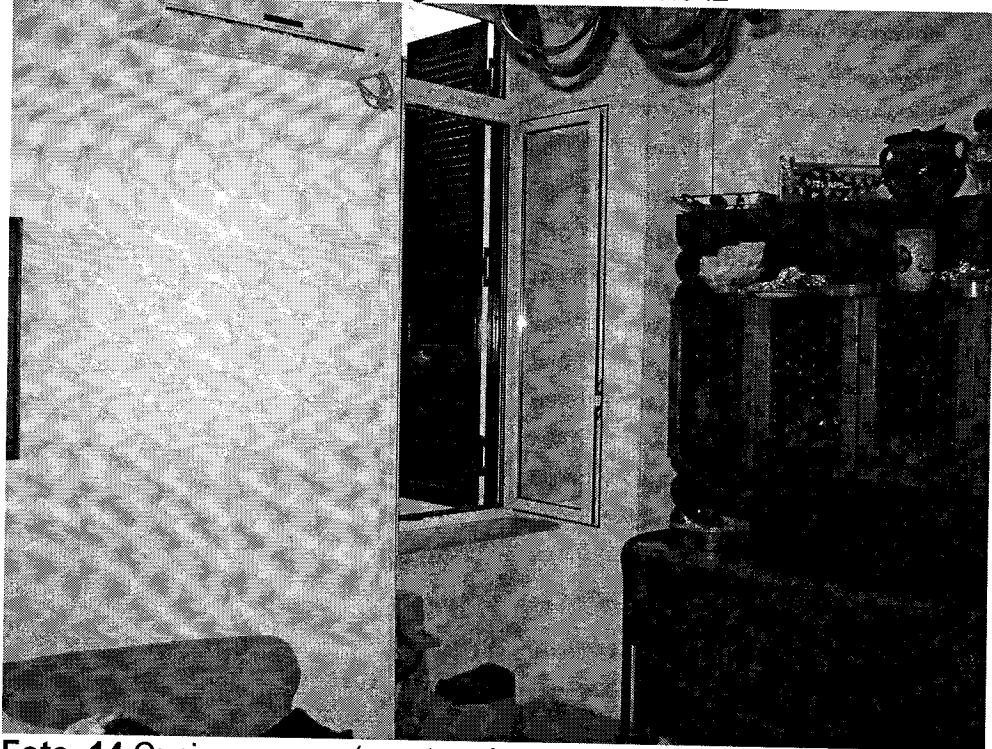


Foto 14 Cucina-pranzo (apertura lato Nord)



Foto 15 Cucina



Foto 16 Bagno (apertura lato Sud)



Foto 17 Bagno (apertura lato Sud)

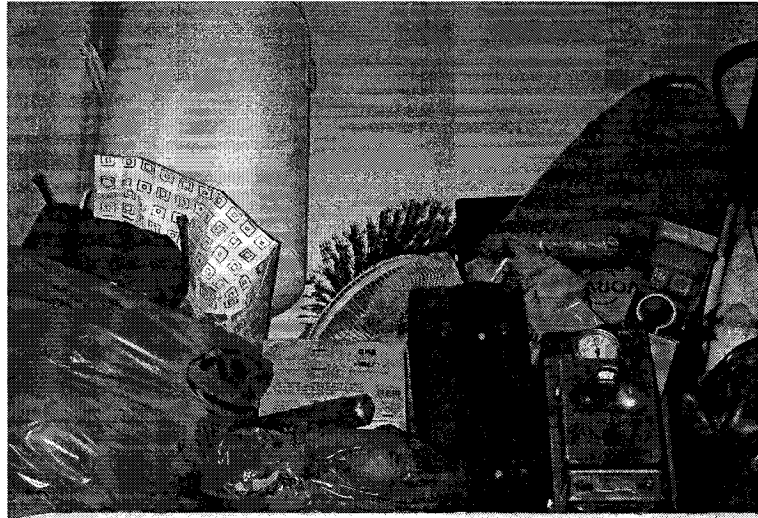


Foto 18 Bagno



Foto 19 Camere da letto

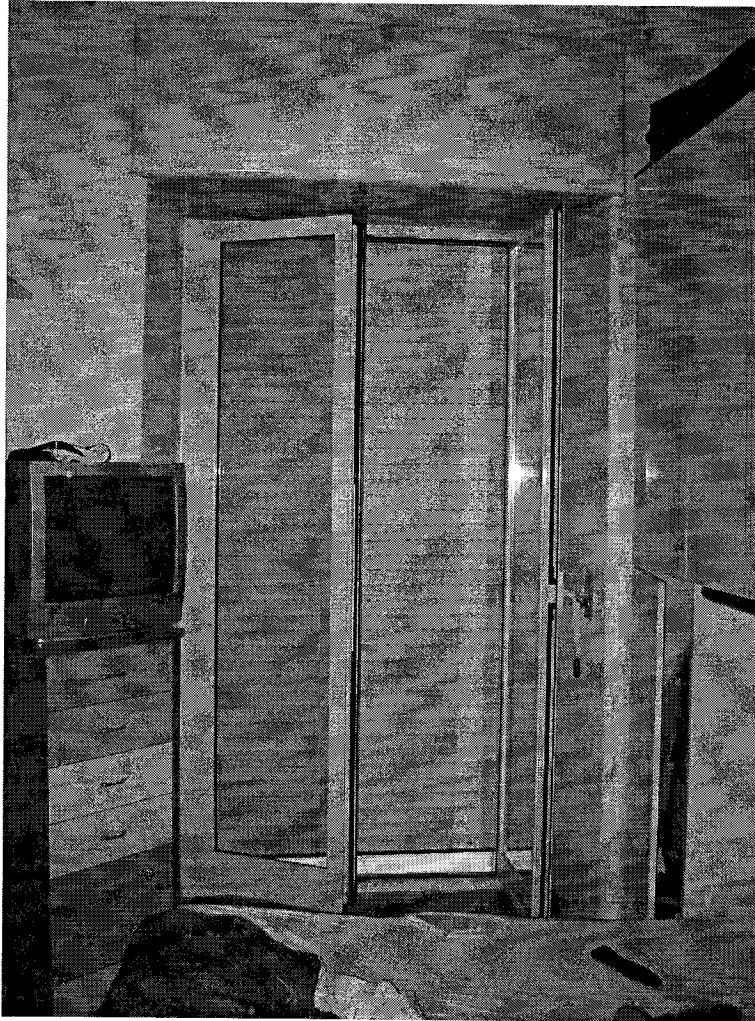


Foto 20 Camera da letto L1



Foto 21 Camera da letto Lm

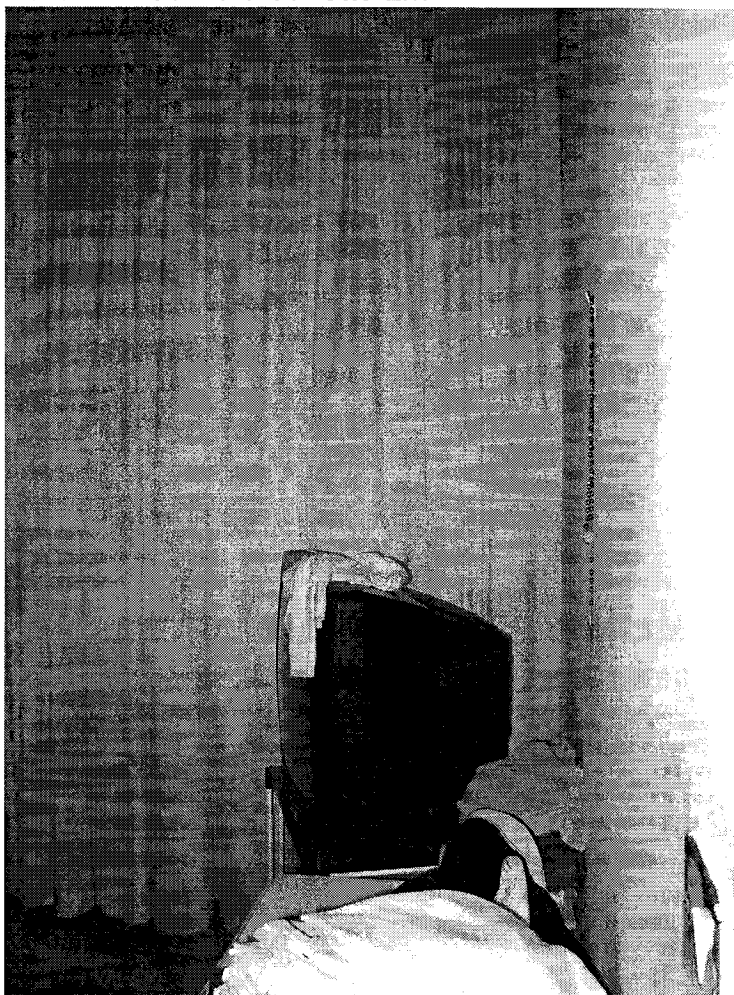


Foto 22 Camera da letto Lm (apertura lato Sud)



Foto 23 Balcone sulla strada interna (apertura lato Sud)



Foto 24 Balcone sulla strada interna (apertura lato Sud)